



FLOOD FIXTURES

Gymnasiums, Billboards, Buildings, Parks, Pools, Parking
Lots, Gas Stations, Schools, Plazas, Etc.



CATALOG

888-241-9498 | info@ecilight.com

957 Nasa Parkway #106 Houston, TX 77058

FLOOD FIXTURES

Floodlights are a type of lighting that provides a large amount of light to an area. They are used in residential homes, as well as for commercial buildings. They are also used in stadiums and on stages used for plays and concerts. Since floodlights display a lot of light, they are ideal to use as a security and safety measure to discourage criminals



ECI-F-LPA Series



ECI-F-RND Series



ECI-F-HPSQR Series

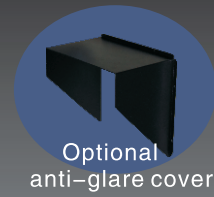
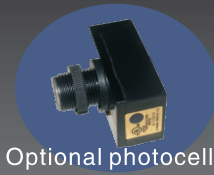


ECI-F-LPSQR Series

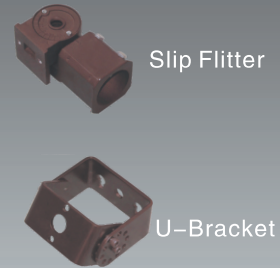


Flood Fixtures

ECI-F-LPA Series



Mounting Mode Options

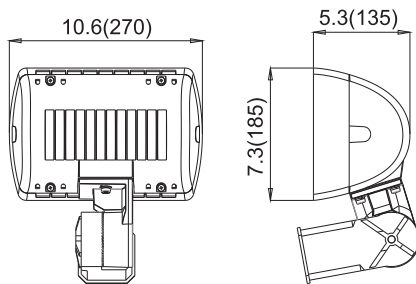


Applications

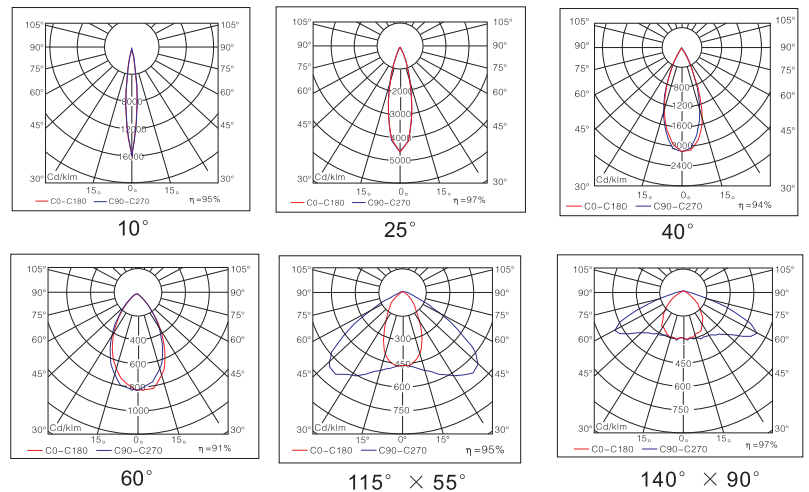
Gymnasiums, Billboards, Buildings, Parks, Pools, Parking Lots, Plazas, etc.

- Efficiency of chips: 150-165 lm/w
- LENS: Optical grade PC, anti-UV oxidation.
- Beam Angle: 10° , 25° , 40° , 60° , 115° × 55° , 140° × 90°
- Housing: die casting aluminum housing with excellent heat dissipation, surface treated with powder coated finish for corrosion and static resistance.
- Input voltage: 100-277 VAC, 277~480VAC, 50/60 HZ
- LED module can be dismantled separately for maintenance.
- LED driver: constant current, efficiency is up to 92%, PF ≥ 0.95.
- IP class: IP 65

Dimension [Inch(mm)]



Distribution Curve Flux



Ordering Information

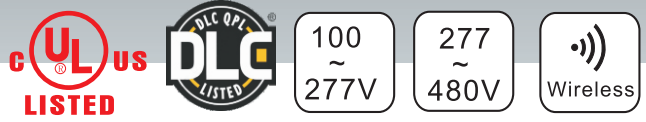
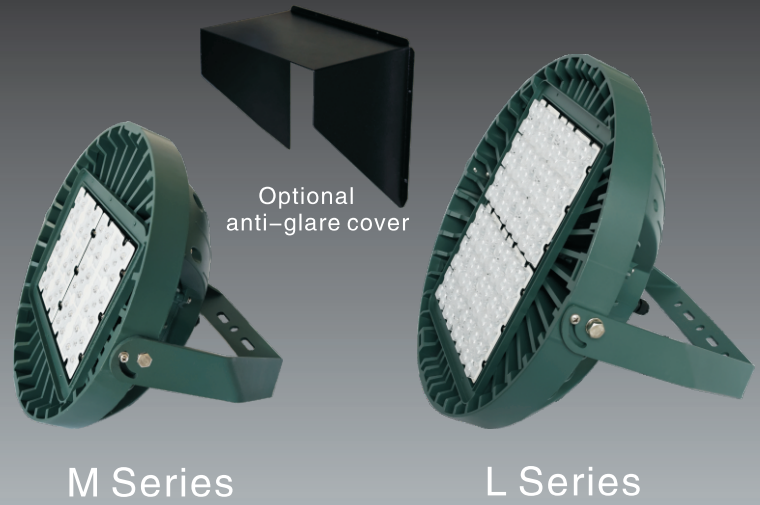
Example: **ECI-1FLPA-40-750-C-S-010-4A**

Company code	Voltage	Type	Power	Ra	Colour Temp.	Colour Options	Mounting	Optic	Options
ECI	1 100~277VAC 2 200~240VAC 3 100~120VAC 4 277~480VAC 5 347~480VAC	FLPA	40 (40W 5400Lumens) 50 (50W 6500Lumens) 60 (60W 7500Lumens) 80 (80W 9350Lumens) 100 (100W 11000Lumens)	7 70 8 80 9 90	27 2700K 30 3000K 40 4000K 50 5000K 57 5700K 65 6500K	C Coffee(standard) B Black S Silver	S Slip flitter Y U bracket	010 10° 025 25° 040 40° 060 60° 140-090 140° × 90° 115-055 115° × 55°	1 0~10V dimming 2 Timing dimming 4A 120V photocell 4D 277V photocell H anti-glare cover



Flood Fixtures

ECI-F-RND Series

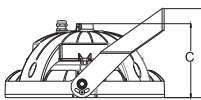
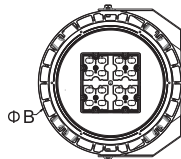
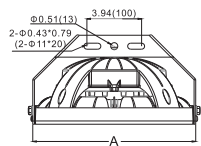


Applications

Gymnasiums, Billboards, Buildings, Parks, Pools, Parking Lots, Plazas, etc.

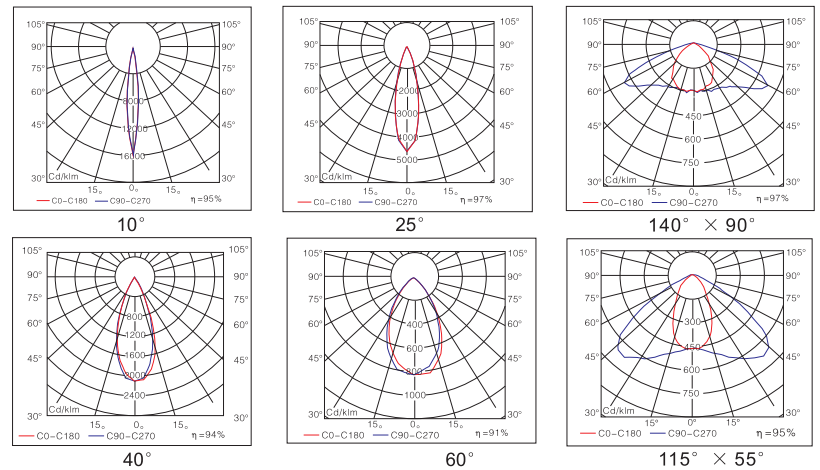
- Efficiency of chips: 150-165 lm/w, 170-180 lm/w
- LENS: Optical grade PC, anti-UV oxidation.
- Beam Angle: 10°, 25°, 40°, 60°, 100°, 140° × 90°, 115° × 55°
- Housing: die casting aluminum housing with excellent heat dissipation, surface treated with powder coated finish for corrosion and static resistance.
- Input voltage: 100-277 VAC, 277-480VAC, 50/60 HZ
- LED module can be dismantled separately for maintenance.
- LED driver: constant current, efficiency is up to 92%, PF ≥ 0.95.
- IP class: IP 65

Dimension [Inch(mm)]



Wattage	A	B	C	D
40-80W	11.7(298)	11.5(292)	5.3(135)	6.4(163)
100-200W	15.3(388)	15.0(380)	6.5(164)	8.5(215)
200-500W	20.1(510)	19.7(500)	7.56(192)	10.6(268)

Distribution Curve Flux



Example: ECI-1FRNDS-40-750-G-010-1H

Ordering Information

Company code	Voltage	Type	Power	Ra	Colour Temp.	Colour Options	Optic	Options
ECI	1 100~277VAC 2 200~240VAC 3 100~120VAC 4 277~480VAC 5 347~480VAC	FRNDS	40 (40W 4950Lumens)	7 70 8 80 9 90	27	S Silver (standard) B Black C Coffee G Green	010	1 0~10V dimming 2 Timing dimming H anti-glare cover 5 Wireless
			40P (40W 5450Lumens)		2700K		025	
			60 (60W 7500Lumens)		30		25°	
			60P (60W 8250Lumens)		3000K		40°	
			80 (80W 9250Lumens)		40		60°	
		FRNDM	100 (100W 11700Lumens)	50 5000K 57 5700K 65 6500K	100P (100W 12850Lumens)	4000K	060	
			120 (120W 15000Lumens)		120P (120W 16500Lumens)	60°	100	
			120P (120W 16500Lumens)		150 (150W 18000Lumens)	100°	140-090	
			150 (150W 18000Lumens)		150P (150W 19800Lumens)	140° × 90°	115-055	
			150P (150W 19800Lumens)		200 (200W 22000Lumens)	115° × 55°		
		FRNDL	200 (200W 24200Lumens)	200P (200W 23400Lumens)	200P (200W 25750Lumens)			
			200P (200W 24200Lumens)	240 (240W 26150Lumens)	240P (240W 28750Lumens)			
			240 (240W 26150Lumens)	300 (300W 35400Lumens)	300P (300W 38950Lumens)			
			240P (240W 28750Lumens)	400 (400W 44000Lumens)	400P (400W 48400Lumens)			
			300 (300W 35400Lumens)	500 (500W 54000Lumens)				

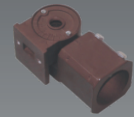


Flood Fixtures

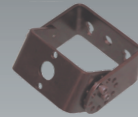
ECI-F-HPSQR Series



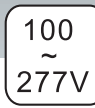
Mounting Mode Options



Slip Flitter



U-Bracket

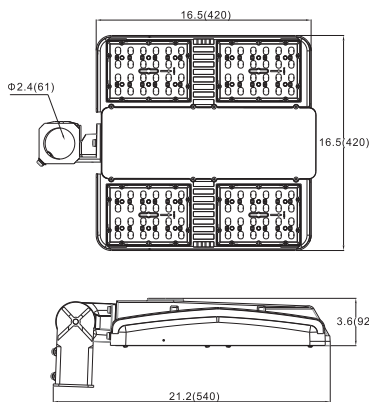


Applications

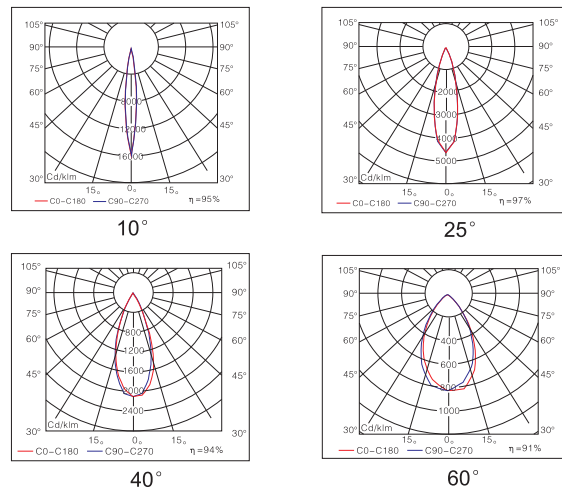
Gymnasiums, Billboards, Buildings, Parks, Pools, Parking Lots, Plazas, etc.

- Efficiency of chips: 150-165 lm/w, 170-180 lm/w
- LENS: Optical grade PC, anti-UV oxidation.
- Beam Angle: 10° , 25° , 40° , 60° , 100° , special beam angle is available upon request.
- Housing: die casting aluminum housing with excellent heat dissipation, surface treated with powder coated finish for corrosion and static resistance.
- Input voltage: 100-277 VAC, 277~480VAC, 50/60 HZ
- LED module can be dismantled separately for maintenance.
- LED driver: constant current, efficiency is up to 92%, PF ≥ 0.95.
- IP class: IP 65

Dimension [Inch(mm)]



Distribution Curve Flux



Ordering Information

Example: **ECI-1FHPSQR-150-750-C-S-010-1**

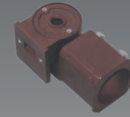
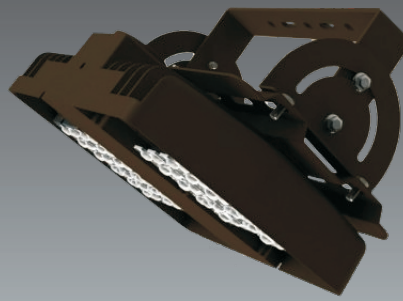
Company code	Voltage	Type	Power	Ra	Colour Temp.	Colour Options	Mounting	Optic	Options
ECI	1	FHPSQR	150 (150W 15500Lumens)	7	27	C Coffee(standard)	S Slip flitter	010	1
	100~277VAC		70	2700K	0~10V dimming				
	2		200 (200W 20570Lumens)	8	30	B Black	Y U bracket	025	2
	200~240VAC		200P (200W 25300Lumens)	80	3000K				
	3		240 (240W 25500Lumens)	9	40	S Silver		040	5
	100~120VAC		240P (240W 29300Lumens)	90	4000K				
	4		300 (300W 30810Lumens)		50			060	
	277~480VAC		300P (300W 37600Lumens)		5000K				
	5				57			100	
	347~480VAC				5700K				
					65			100°	
					6500K				



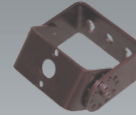
Flood Fixtures

ECI-F-LPSQR Series

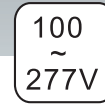
Mounting Mode Options



Slip Flitter



U-Bracket

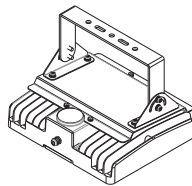
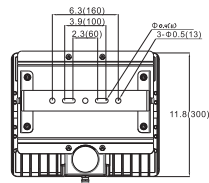
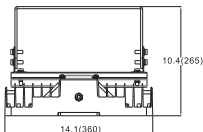


Applications

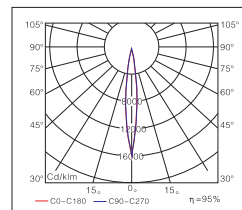
Gymnasiums, Billboards, Buildings, Parks, Pools, Parking Lots, Plazas, etc.

- Efficiency of chips: 150-165 lm/w, 170-180 lm/w
- LENS: Optical grade PC, anti-UV oxidation.
- Beam Angle: 10° , 25° , 40° , 60° , 100° , special beam angle is available upon request.
- Housing: die casting aluminum housing with excellent heat dissipation, surface treated with powder coated finish for corrosion and static resistance.
- Input voltage: 100-277 VAC, 277~480VAC, 50/60 HZ
- LED module can be dismantled separately for maintenance.
- LED driver: constant current, efficiency is up to 92%, PF ≥ 0.95.
- IP class: IP 65

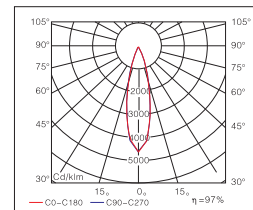
Dimension [Inch(mm)]



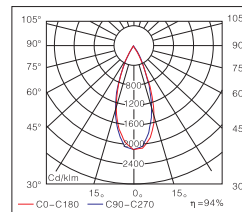
Distribution Curve Flux



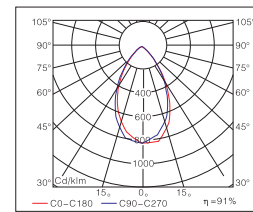
10°



25°



40°



60°

Ordering Information

Example: **ECI-1FLPSQR-150-750-C-S-010-1**

Company code	Voltage	Type	Power	Ra	Colour Temp.	Colour Options	Mounting	Optic	Options
ECI	1 100~277VAC 2 200~240VAC 3 100~120VAC 4 277~480VAC 5 347~480VAC	FLPSQR	60 (60W 7800Lumens) 60P (60W 8580Lumens) 80 (80W 9900Lumens) 80P (80W 10900Lumens) 100 (100W 11700Lumens) 100P (100W 12850Lumens) 120 (120W 15000Lumens) 120P (120W 16500Lumens) 150 (150W 18000Lumens) 150P (150W 19800Lumens)	7 70 8 80 9 90	27 2700K 30 3000K 40 4000K 50 5000K 57 5700K 65 6500K	C Coffee(standard) B Black S Silver	S Slip flitter Y U bracket BY Big U bracket	010 10° 025 25° 040 40° 060 60° 100 100°	1 0~10V dimming 2 Timing dimming