

jason.l
your office furniture mate



www.jasonl.com.au

1300 527 665
customerservice@jasonl.com.au

LITEWALL ELEMENT 1000 DESK assembly

jason.l
your office furniture mate



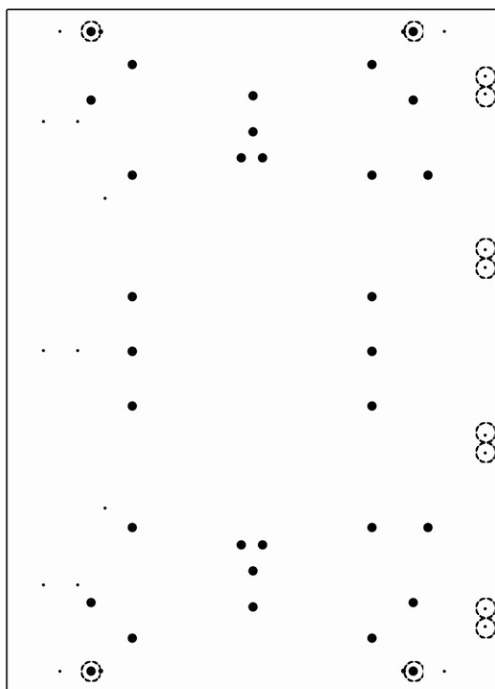
Needed



Need help!

Call us on

1300 527 665



1x A

Components

Litewall
Element 1000
Desk Top
1200 | 1600 | 1800mm

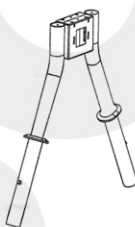


Please use marked holes for
Litewall Element 1000 Desk



4x B

Phillip Head
M6*15 Screw
(silver)



2x E

Leg Core Return



4x F

Leg Sleeve



2x C

Top Plate



2x D

Leg Core Insert



4x G

Sleeve Cover



4x H

Fold Screen



8x I

Phillip Head
M6*20 Screw
(gold)



4x J

Base Foot



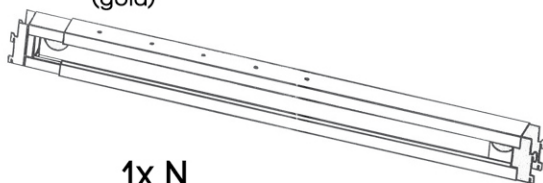
2x L

Core Cover



4x M

Sleeve Cap



1x N

Extendable Beam

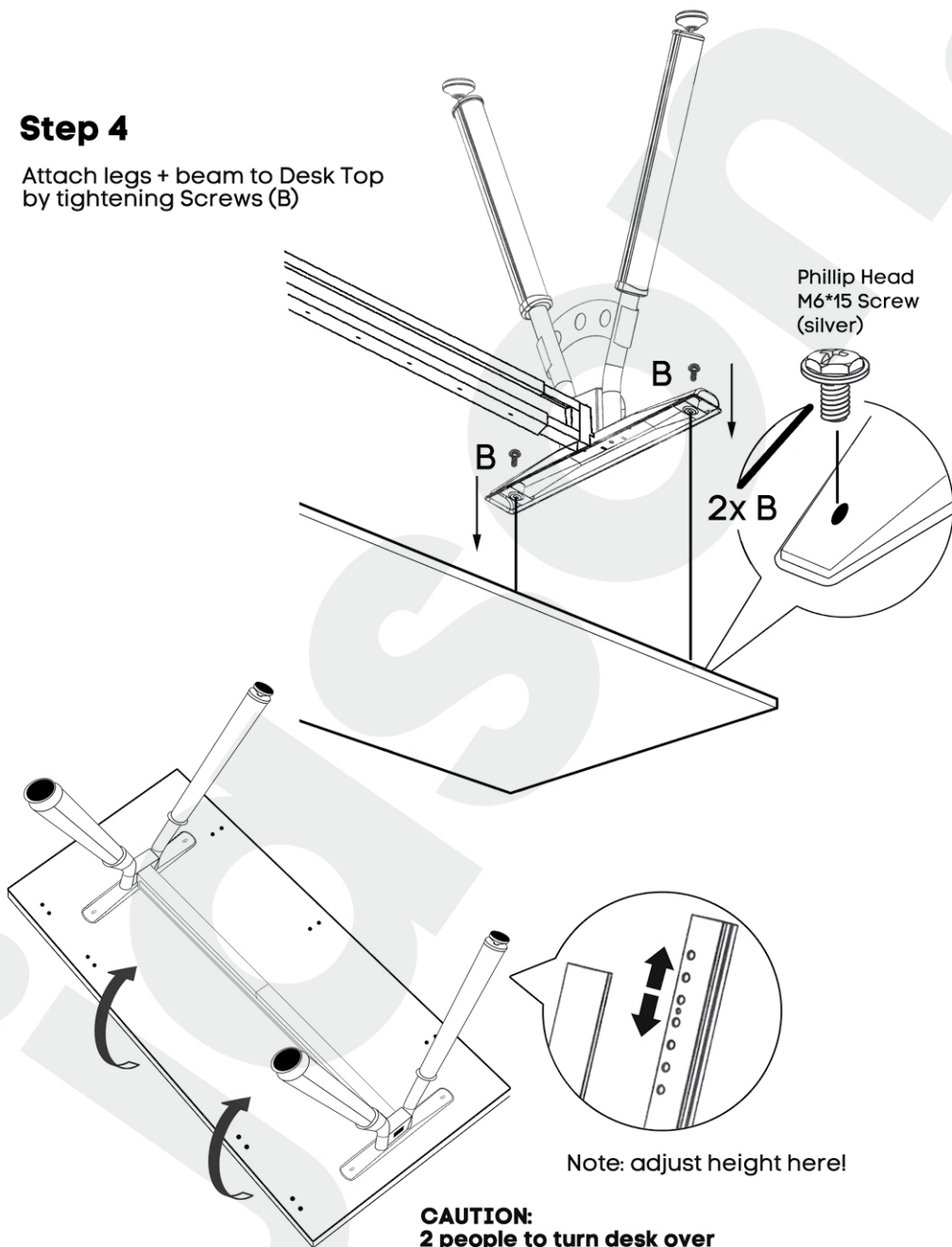
Step 5



Tip: Please handle all the items with care, and always place items upside down on a soft flat surface. Be careful not to scratch the desk top whilst the unit is upside down. Please use two people to turn the desk over to avoid any injury.

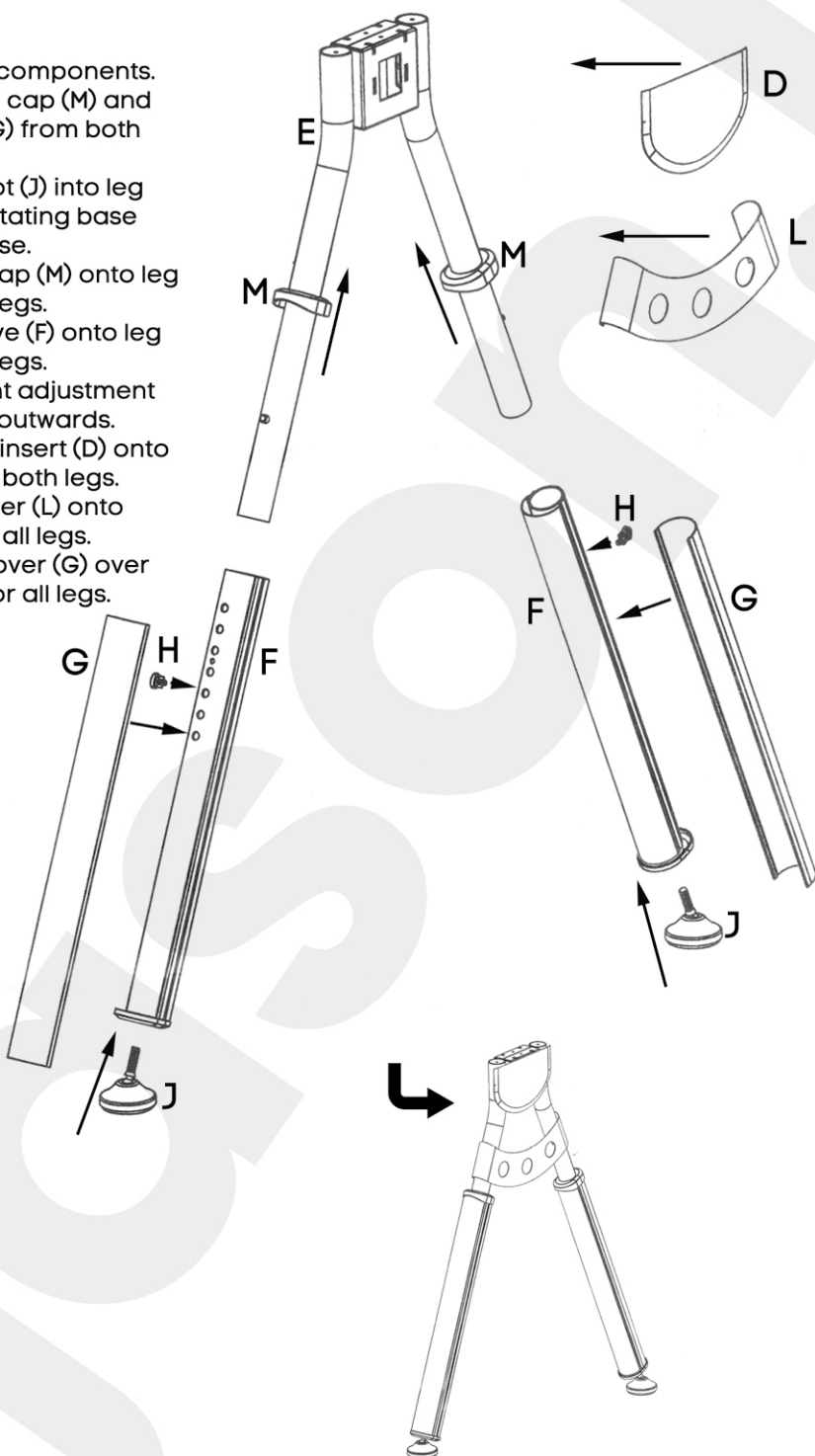
Step 4

Attach legs + beam to Desk Top
by tightening Screws (B)



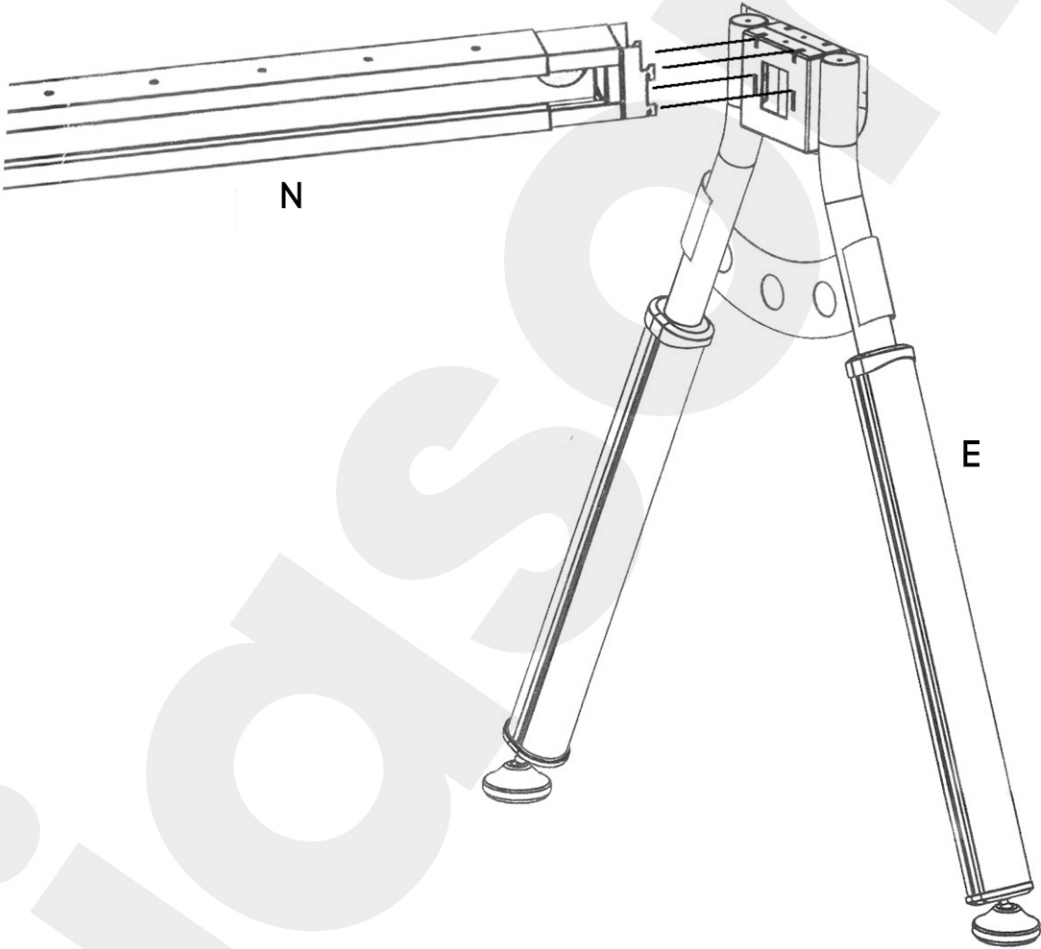
Step 1

- Unwrap all leg components.
- Remove sleeve cap (M) and sleeve cover (G) from both leg sleeves.
- Insert base foot (J) into leg sleeve (F) by rotating base foot (J) clockwise.
- Insert sleeve cap (M) onto leg core (E) for all legs.
- Insert leg sleeve (F) onto leg core (E) for all legs.
TIP: keep height adjustment holes pointing outwards.
- Place leg core insert (D) onto leg core (E) for both legs.
- Place core cover (L) onto leg core (E) for all legs.
- Place sleeve cover (G) over leg sleeve (F) for all legs.



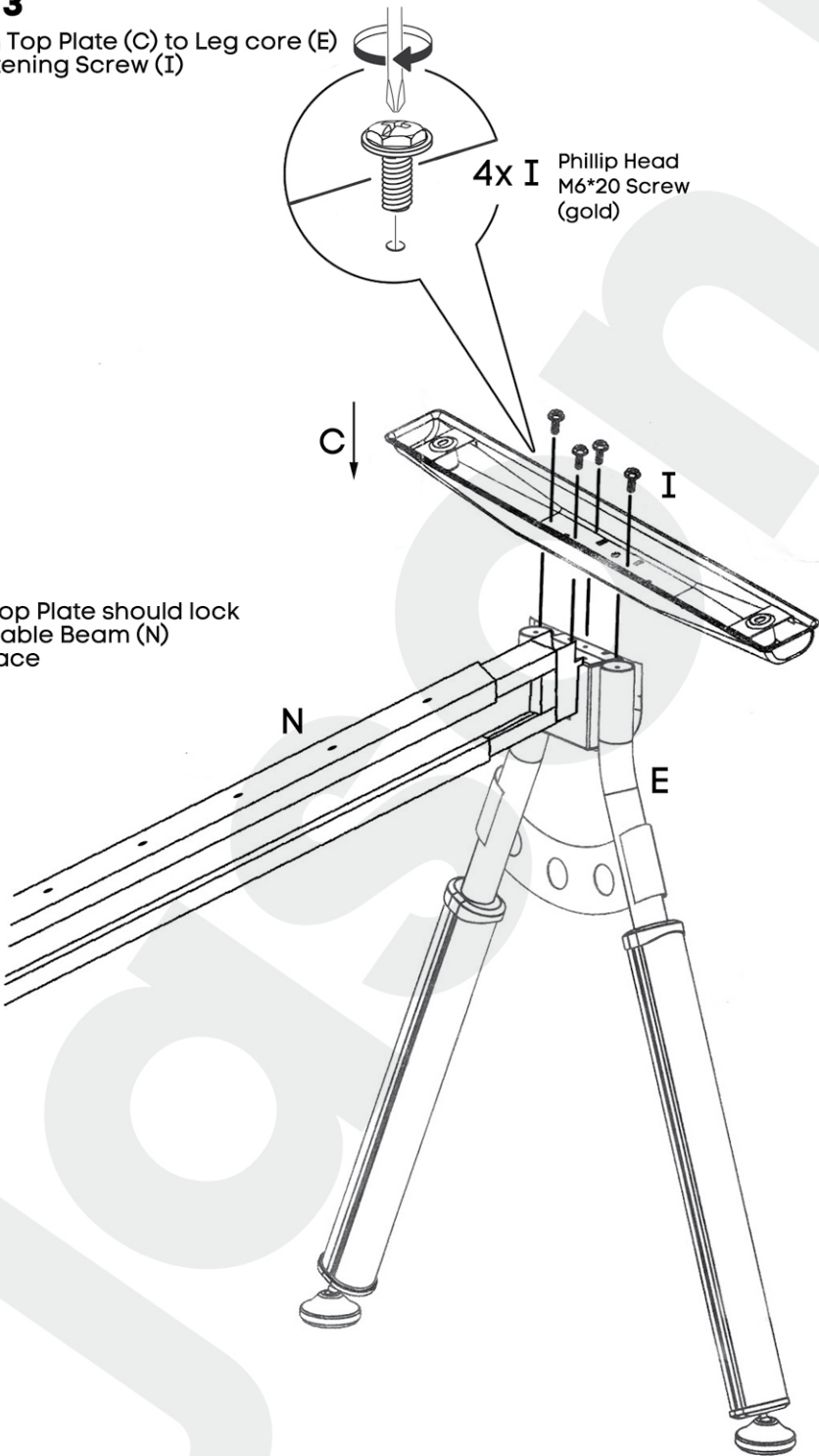
Step 2

Connect extendable Beam (N) to Leg Core (E)



Step 3

Tighten Top Plate (C) to Leg core (E) by tightening Screw (I)

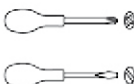


LITEWALL ELEMENT 1000 RETURN assembly

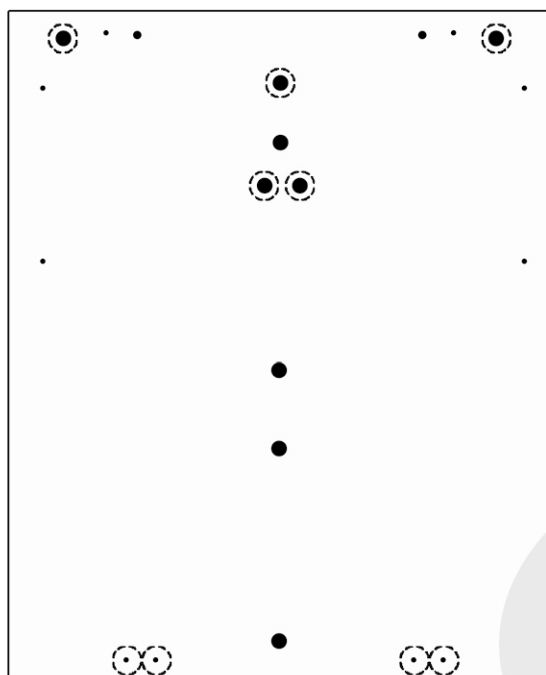
jason.l
your office furniture mate



Needed



Need help!
Call us on
1300 527 665



1x A

Litewall
Element 1000
Return Top
750 | 1000mm



Please use marked holes for
Litewall Element 1000 Return

Components



5x B

Phillip Head
M6*15 Screw
(silver)



8x C

Wood Screw



1x D

Top Plate



1x E

Leg Core Insert



1x F

Leg Core Return



2x G

Leg Sleeve



2x H

Sleeve Cover



2x I

Fold Screen



4x J

Phillip Head
M6*20 Screw
(gold)



2x L

Base Foot



1x M

Core Cover



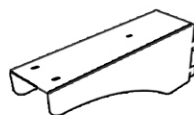
2x N

Sleeve Cap



2x O

Connector Plate

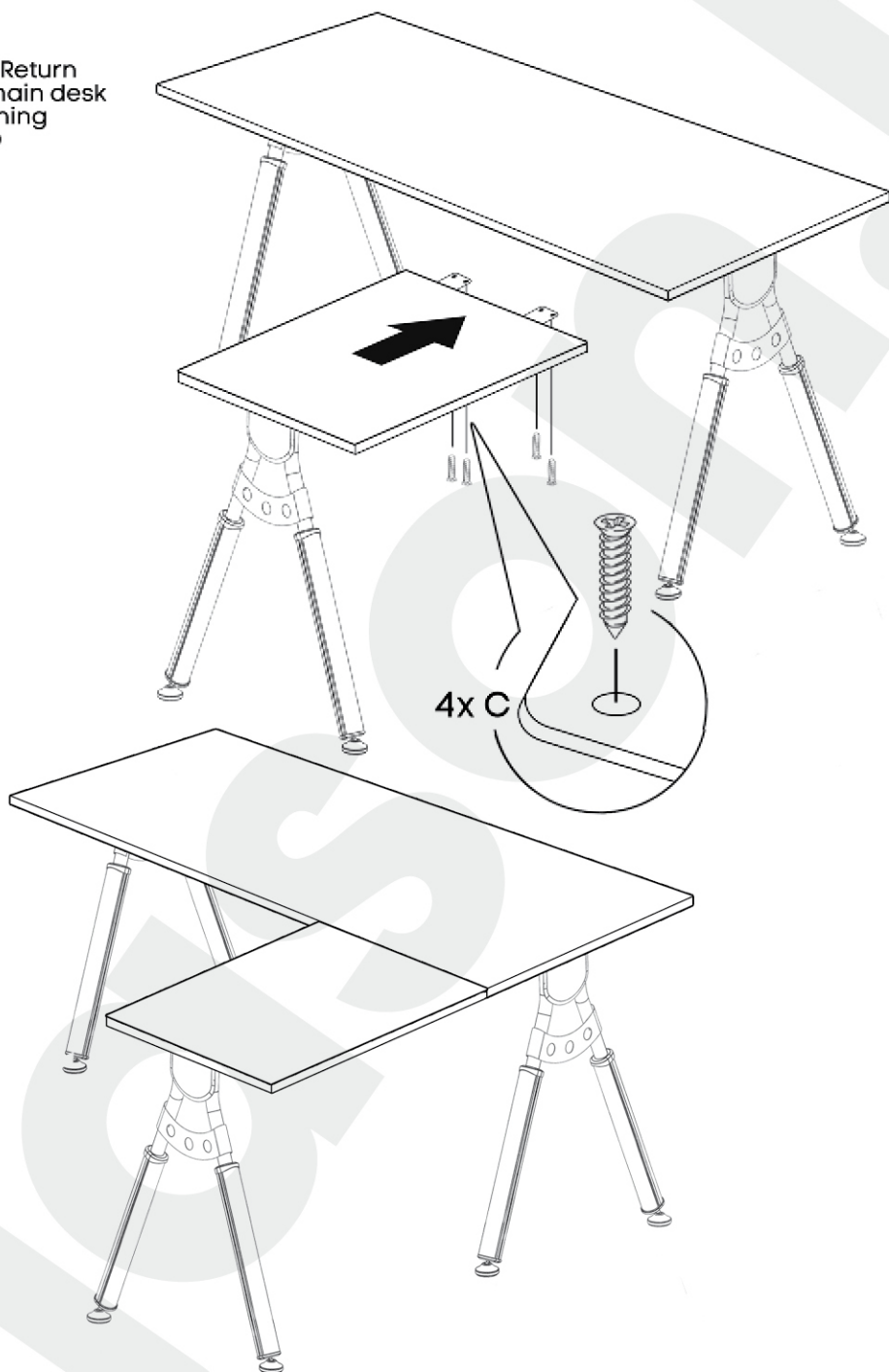


1x P

Cantilever Bracket 2

Step 5

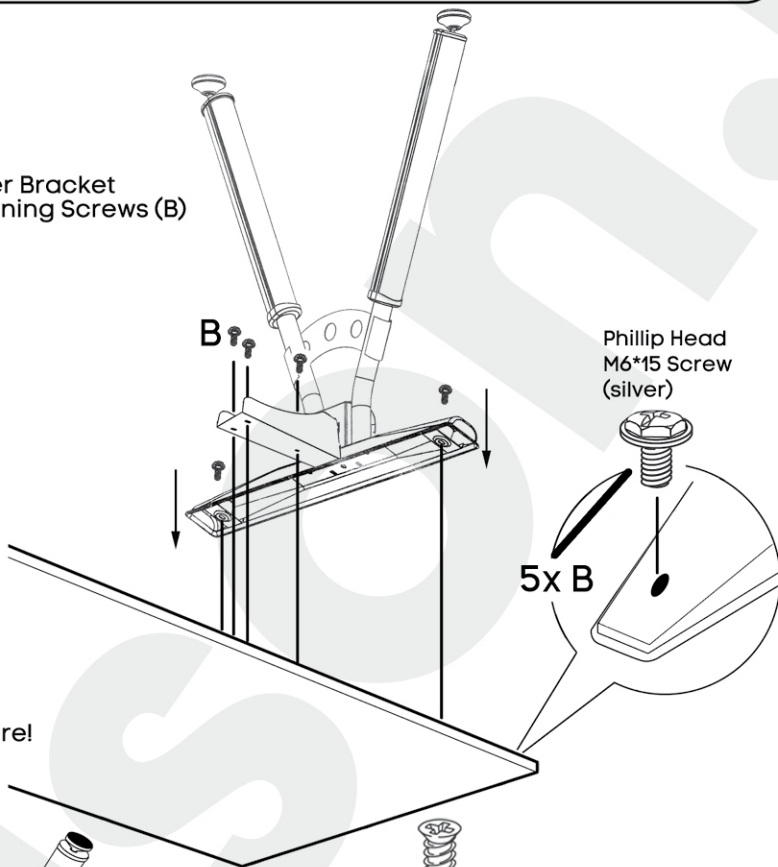
Connect Return desk to main desk by tightening screw (C)



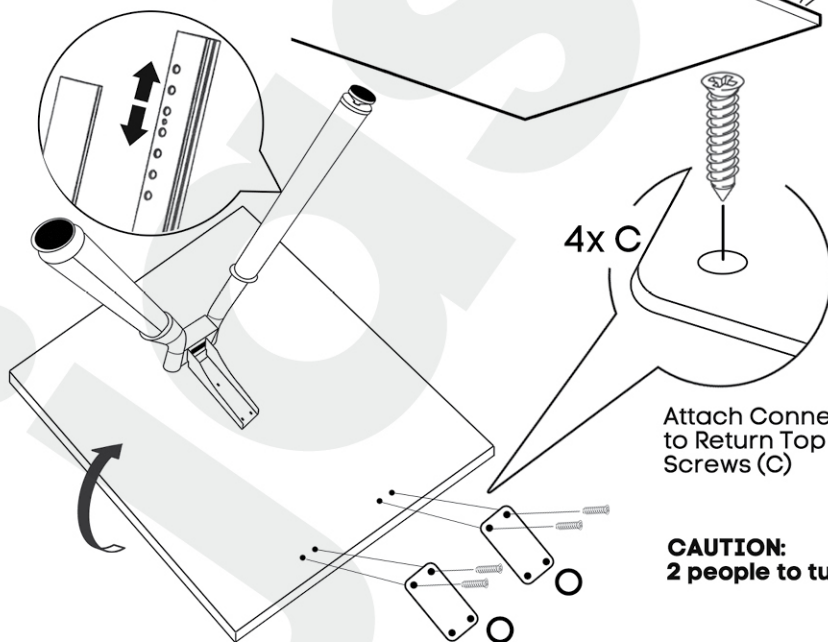
Tip: Please handle all the items with care, and always place items upside down on a soft flat surface. Be careful not to scratch the desk top whilst the unit is upside down. Please use two people to turn the desk over to avoid any injury.

Step 4

Attach legs + Cantilever Bracket to Return Top by tightening Screws (B)



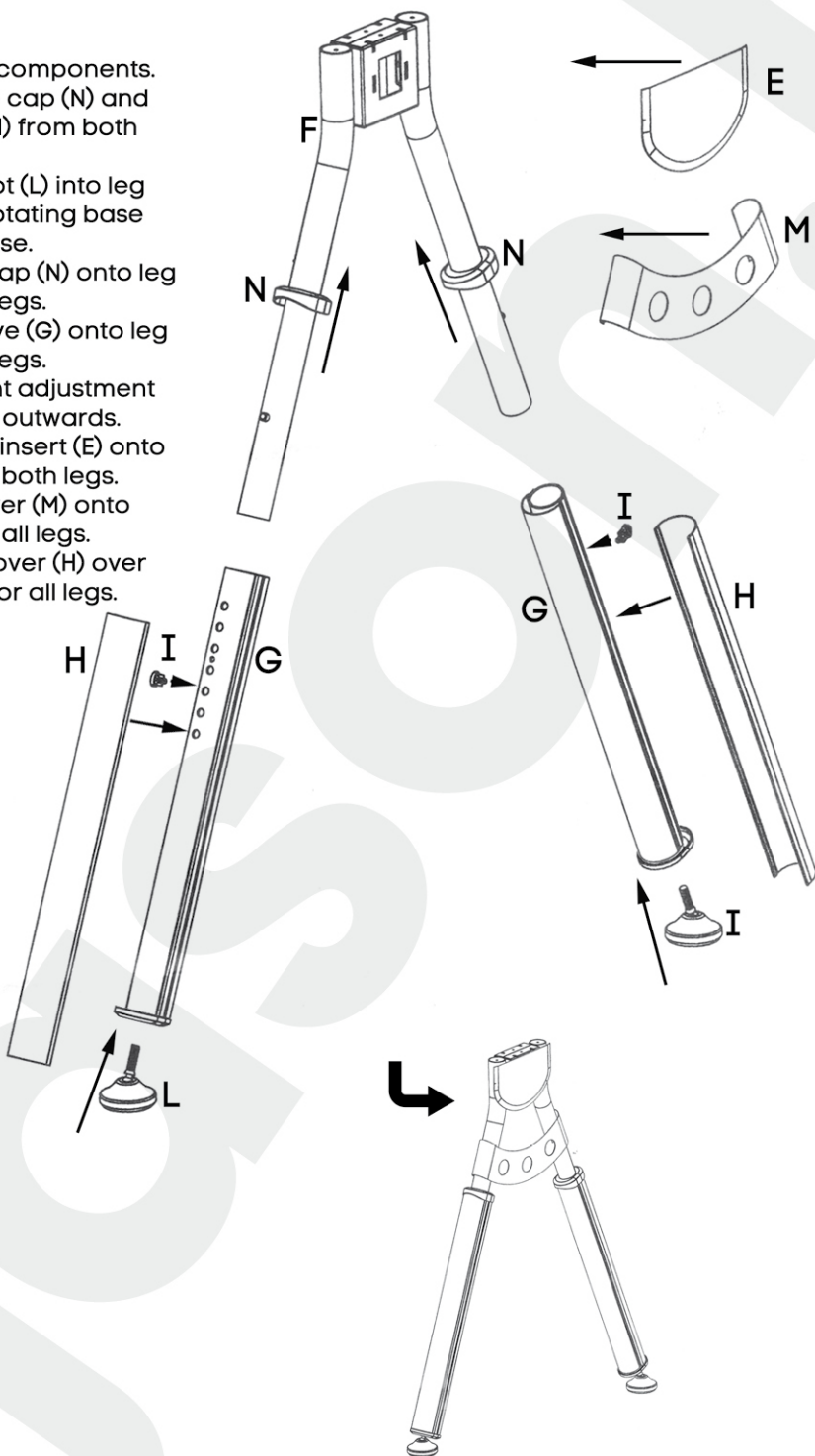
Note: adjust height here!



CAUTION:
2 people to turn desk over

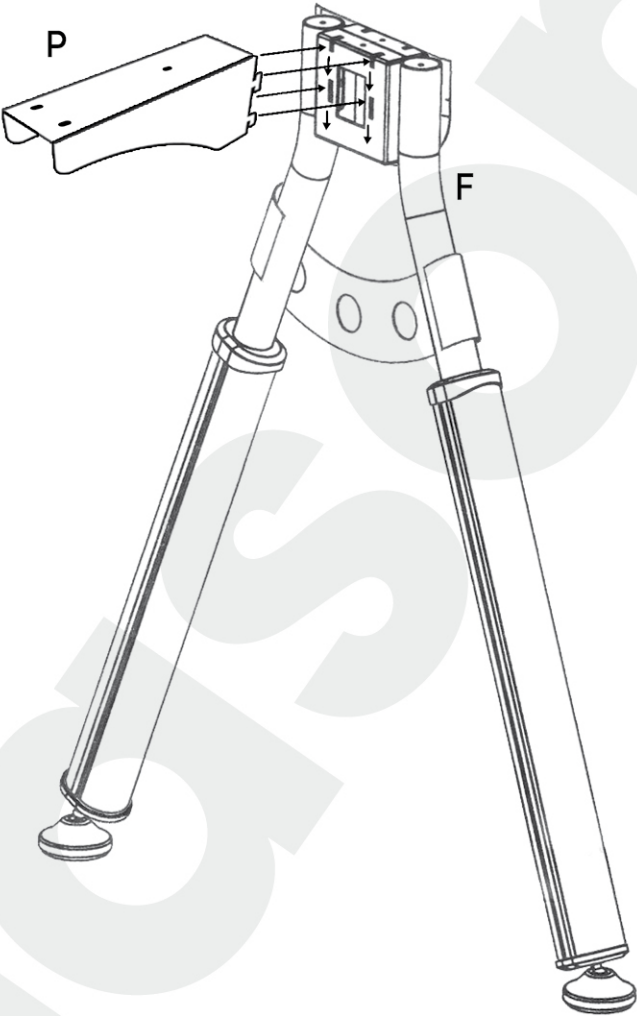
Step 1

- Unwrap all leg components.
- Remove sleeve cap (N) and sleeve cover (H) from both leg sleeves.
- Insert base foot (L) into leg sleeve (G) by rotating base foot (L) clockwise.
- Insert sleeve cap (N) onto leg core (F) for all legs.
- Insert leg sleeve (G) onto leg core (F) for all legs.
TIP: keep height adjustment holes pointing outwards.
- Place leg core insert (E) onto leg core (F) for both legs.
- Place core cover (M) onto leg core (F) for all legs.
- Place sleeve cover (H) over leg sleeve (G) for all legs.



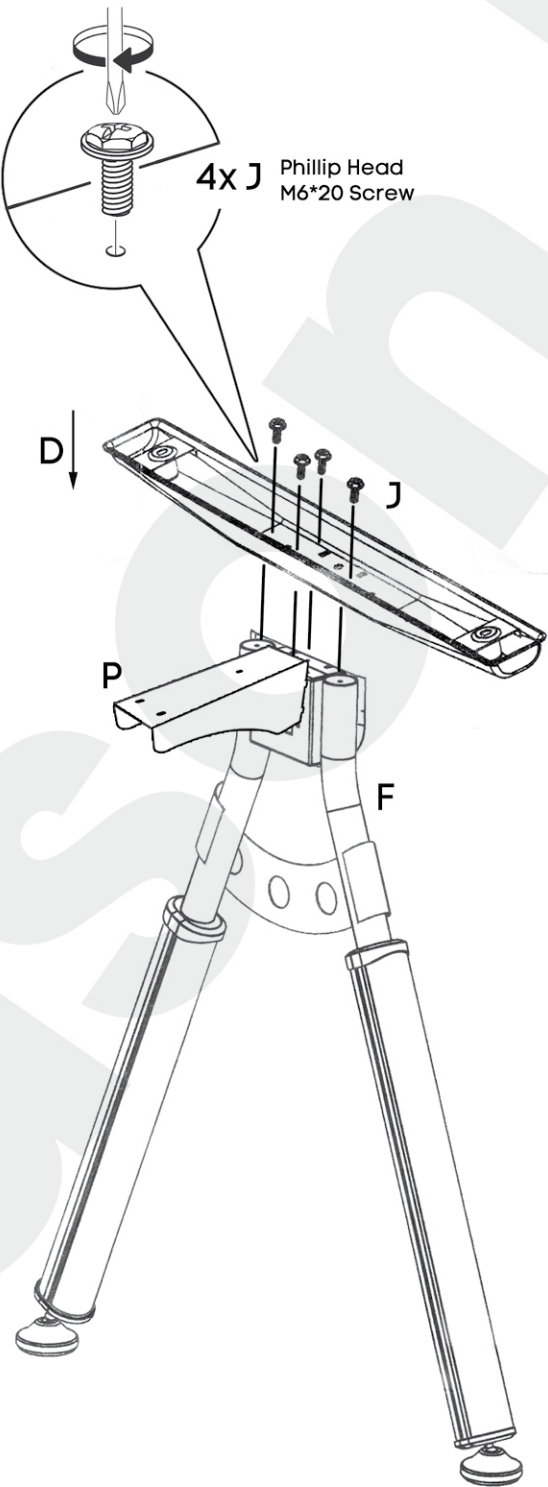
Step 2

Connect Cantilever Bracket (M) to Leg Core Return (D)



Step 3

Tighten Top Plate (D) to
Leg Core Return (F) by
tightening Screw (J)



Note: Top Plate should lock
Cantilever Bracket (P)
into place