

ASSEMBLY INSTRUCTIONS

Small 2 Drawer Lateral 2 Door Cupboard

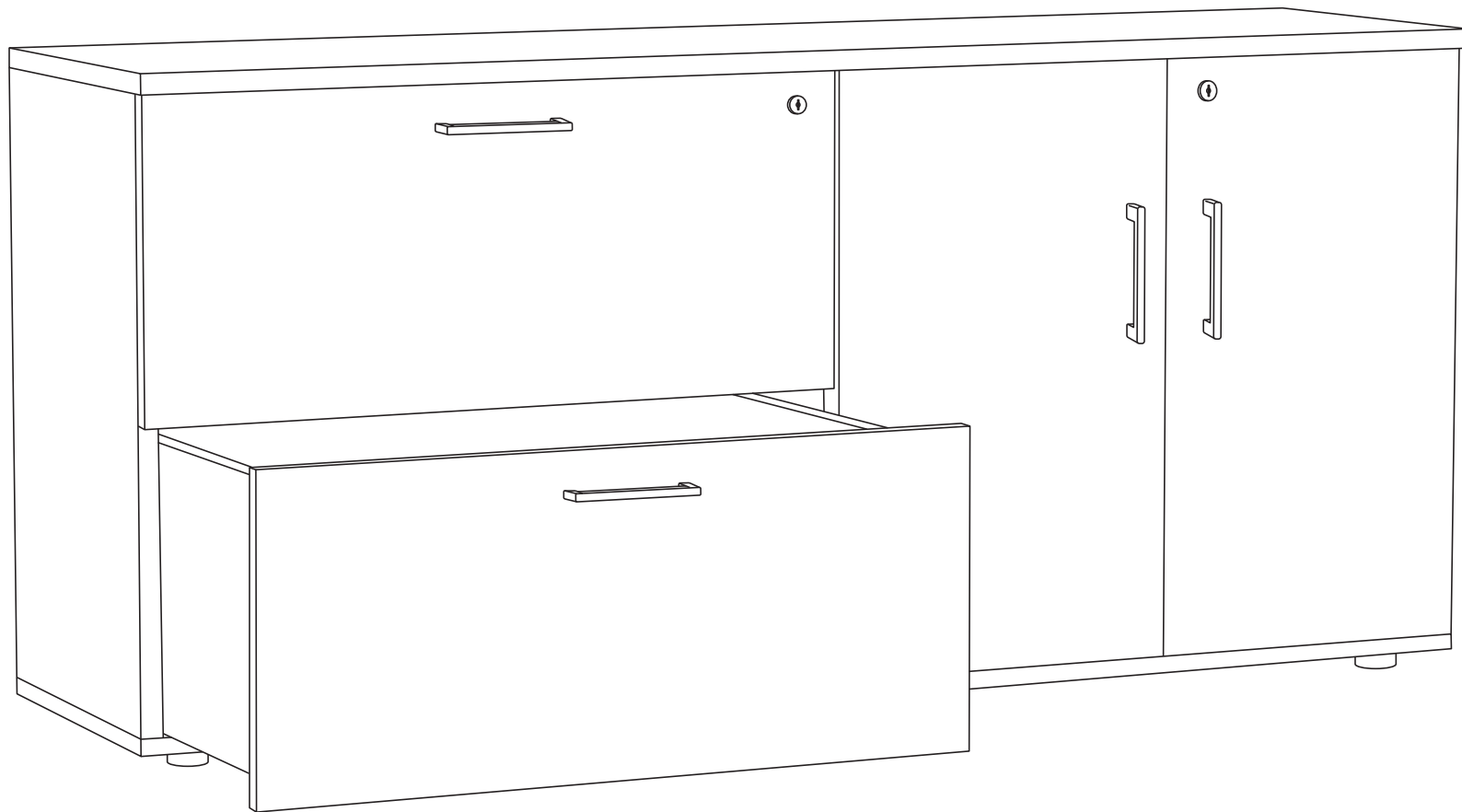
Size (mm): 1600W x 450D x 750H

www.jasonl.com.au

Need help!

Call us on
1300 527 665

jason.l
your office furniture mate



ASSEMBLY INSTRUCTIONS

Small 2 Drawer Lateral 2 Door Cupboard

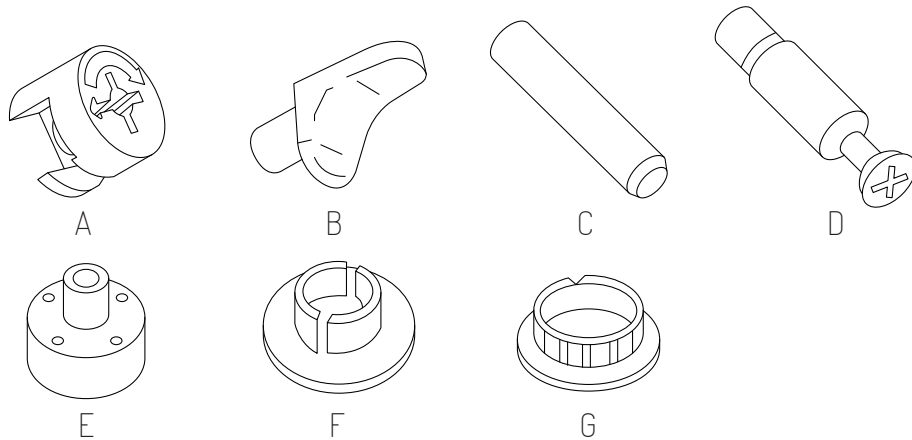
Size (mm): 1600W x 450D x 750H

www.jasonl.com.au

Need help!

Call us on
1300 527 665

jason.l
your office furniture mate



COMPONENTS

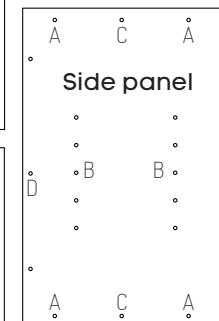
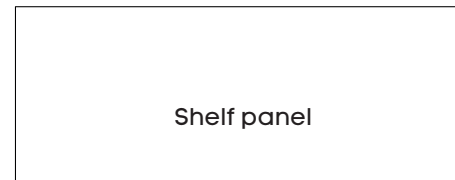
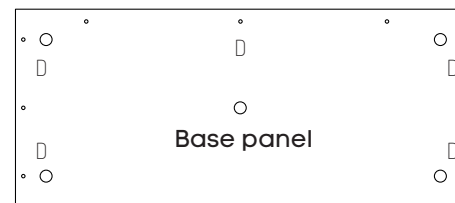
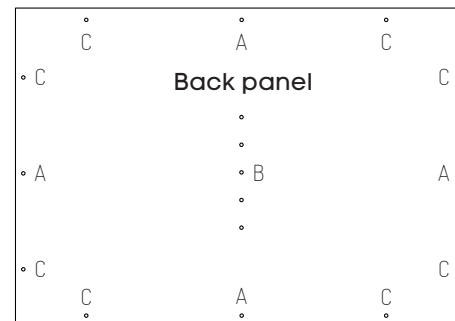
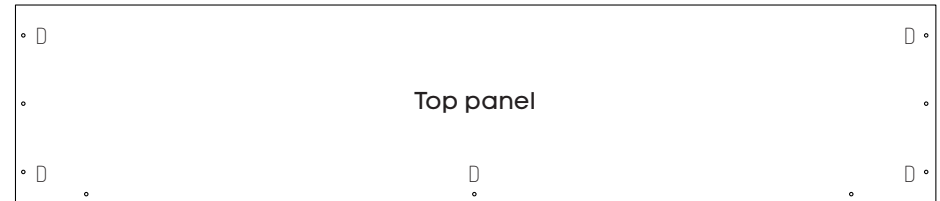
- A Minifix Housing x14
- B Collar Stud x5
- C Rubber Wood Dowel M8 x40mm x14
- D Minifix Connecting Bolt x14
- E Adjustable Leveller N2880 x10
- F Leveller N2880 Cap x10
- G Deco Cap x10
- H Safety hook *

PANELS

- Top Panel x1
- Back Panel x2
- Side Panel x4
- Base Panel x2
- Shelf Panel x1
- Top Rail x4

DOOR ASSEMBLY

- 5/8 Door Hinge c/w Mounting Plate x4
- Chipboard Screw 4x16mm x24
- CSK Tapping Screw #4 3/4" x4
- Rim Lock CL 2/3 x1
- Pan Head Self Tapping Screw x4
- L Huwil Bracket x1
- Plate Bracket BK x1



ASSEMBLY INSTRUCTIONS

Small 2 Drawer Lateral 2 Door Cupboard

Size (mm): 1600W x 450D x 750H

www.jasonl.com.au

Need help!

Call us on
1300 527 665

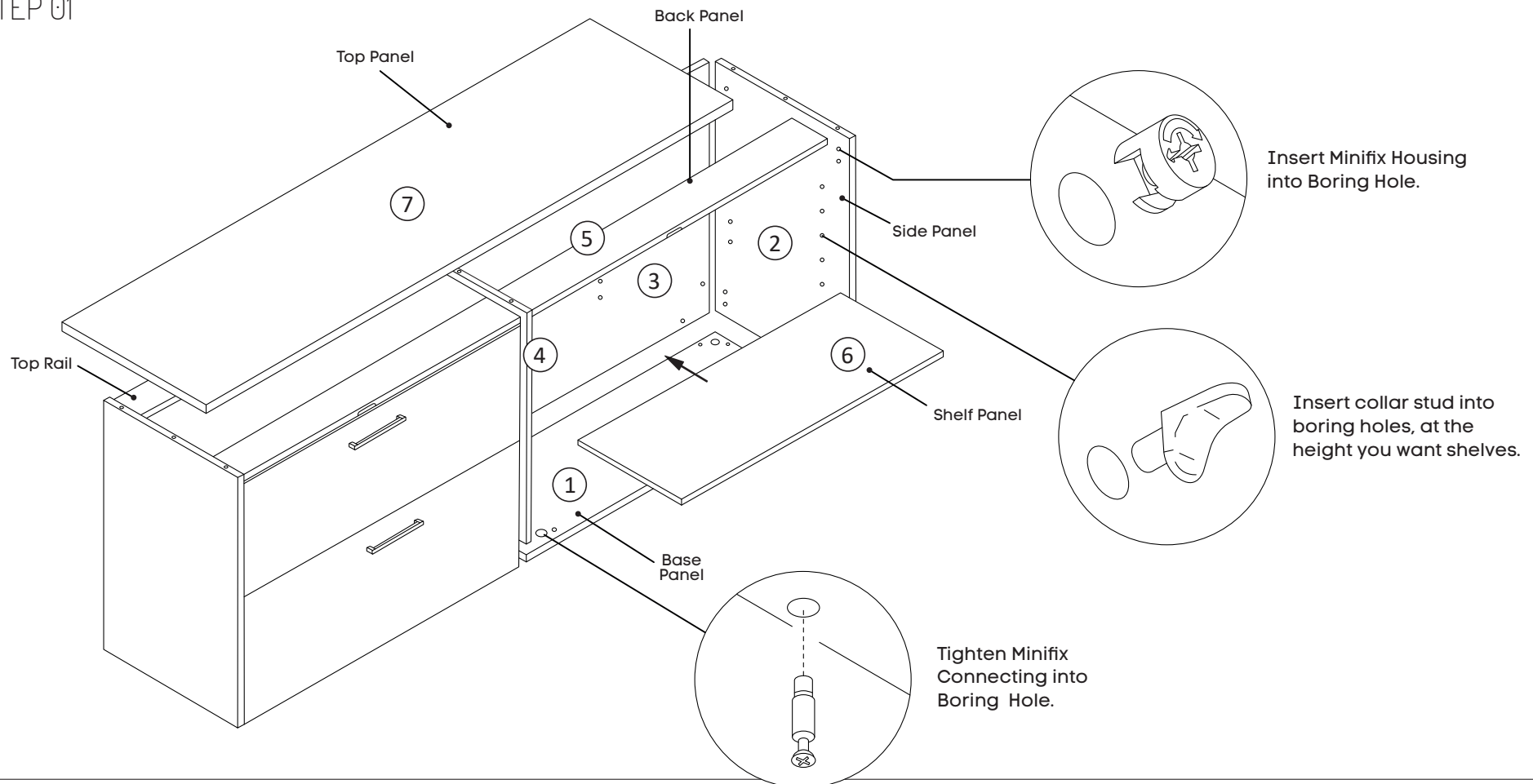
jason.l
your office furniture mate



Function of Klux Cam
Turn for locking
75° Min - 195° Max

Make sure the arrow is
pointing upwards before
inserting into the panel's hole.

STEP 01



Assemble all panels in the following order.

ASSEMBLY INSTRUCTIONS

Small 2 Drawer Lateral 2 Door Cupboard

Size (mm): 1600W x 450D x 750H

www.jasonl.com.au

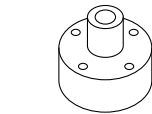
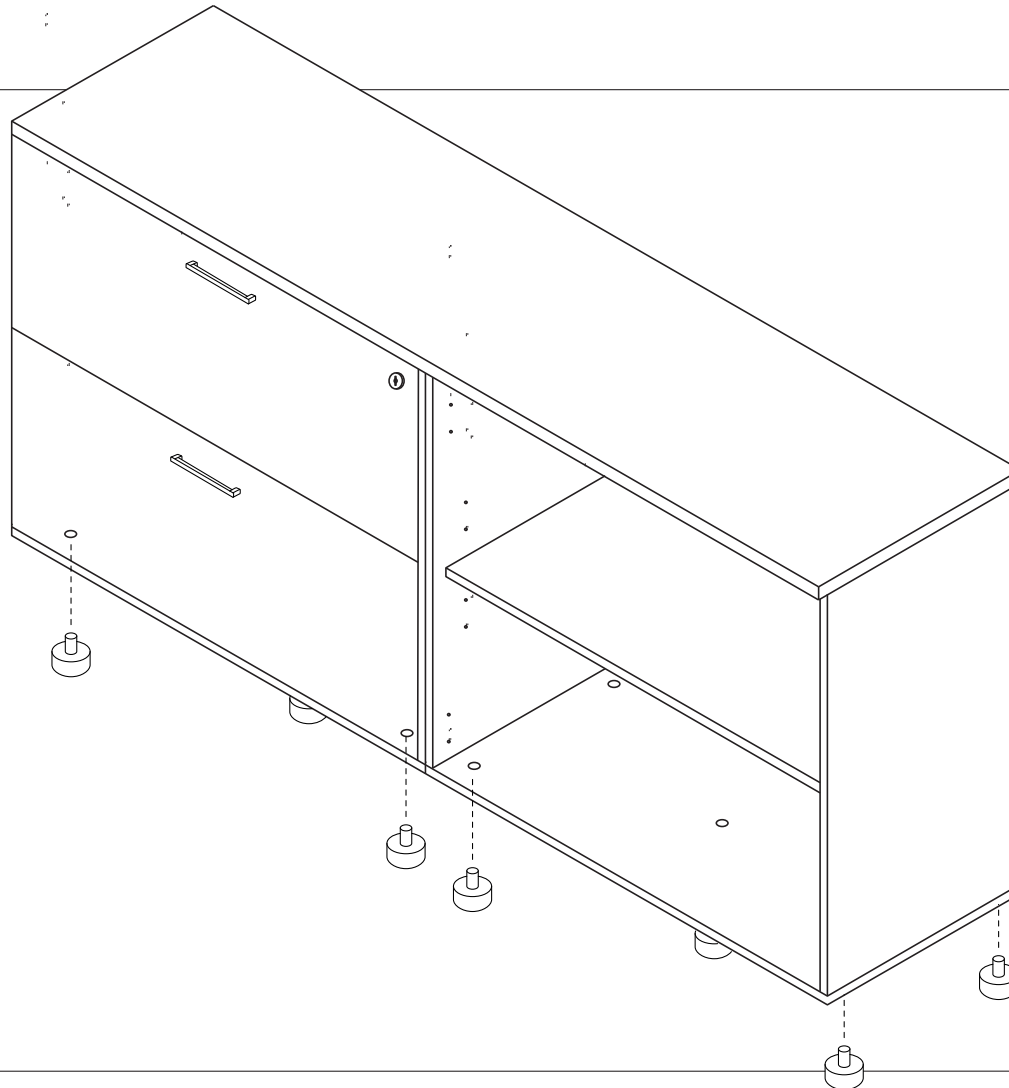
Need help!

Call us on
1300 527 665

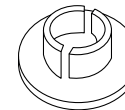
jason.l
your office furniture mate



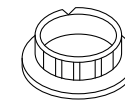
STEP 02



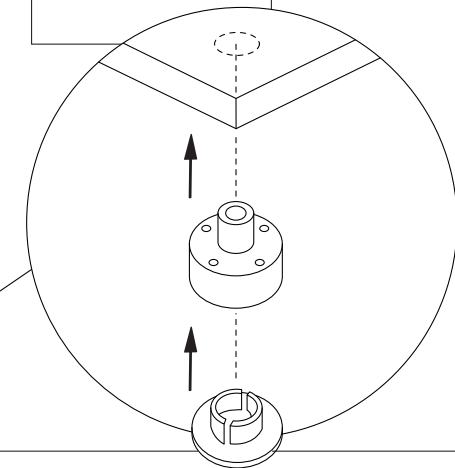
Adjustable Leveller
N2880



Leveller N2880 Cap



DECO-CAP-18X15
5-pcs



Tighten leveller into boring hole and screw the cap.
Use DECO-CAP-18X15 to seal holes on base panel.

ASSEMBLY INSTRUCTIONS

Small 2 Drawer Lateral 2 Door Cupboard

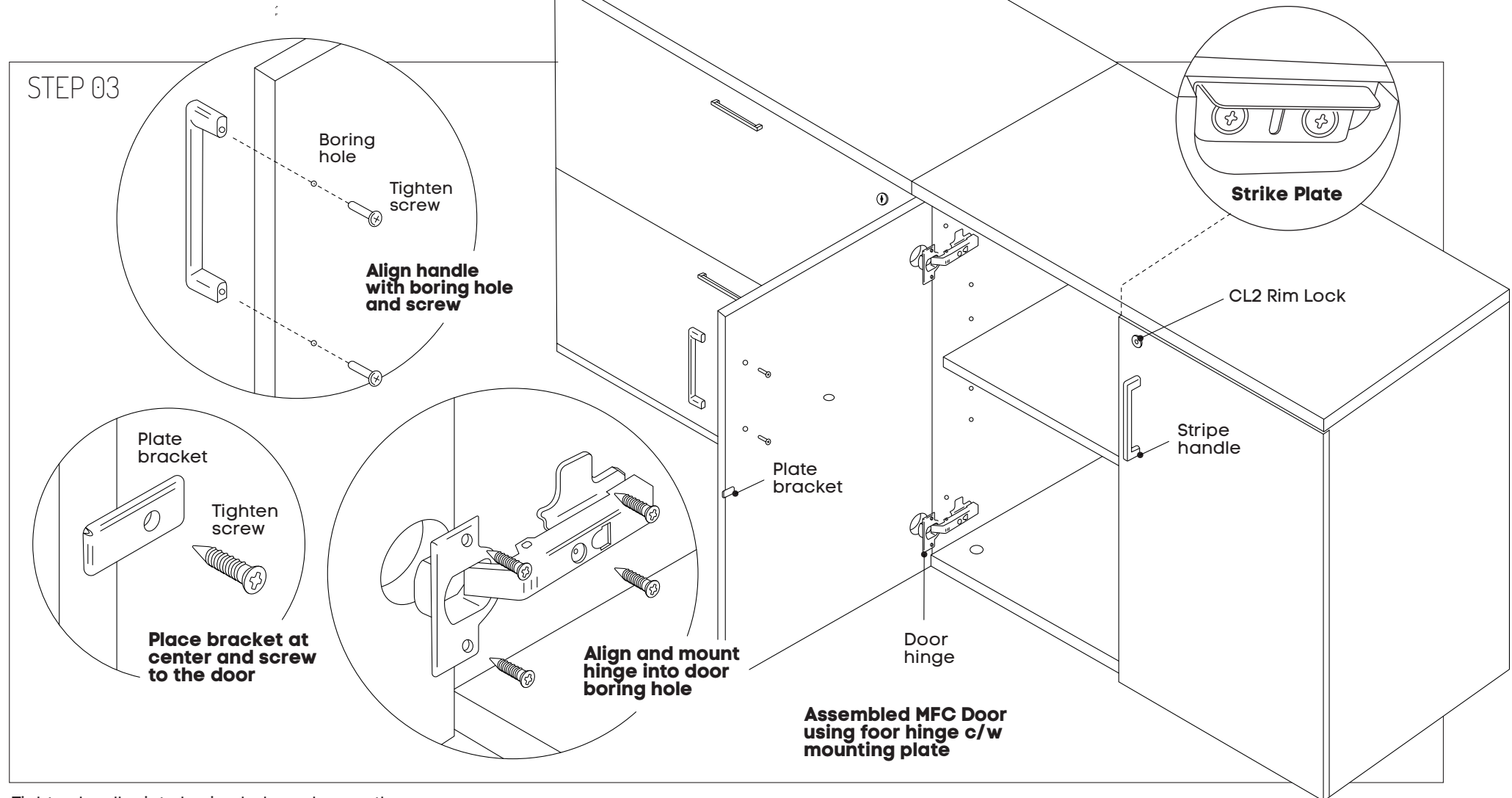
Size (mm): 1600W x 450D x 750H

www.jasonl.com.au

Need help!

Call us on
1300 527 665

jason.l
your office furniture mate



Tighten leveller into boring hole and screw the cap.
Use DECO-CAP-18X15 to seal holes on base panel.

ASSEMBLY INSTRUCTIONS

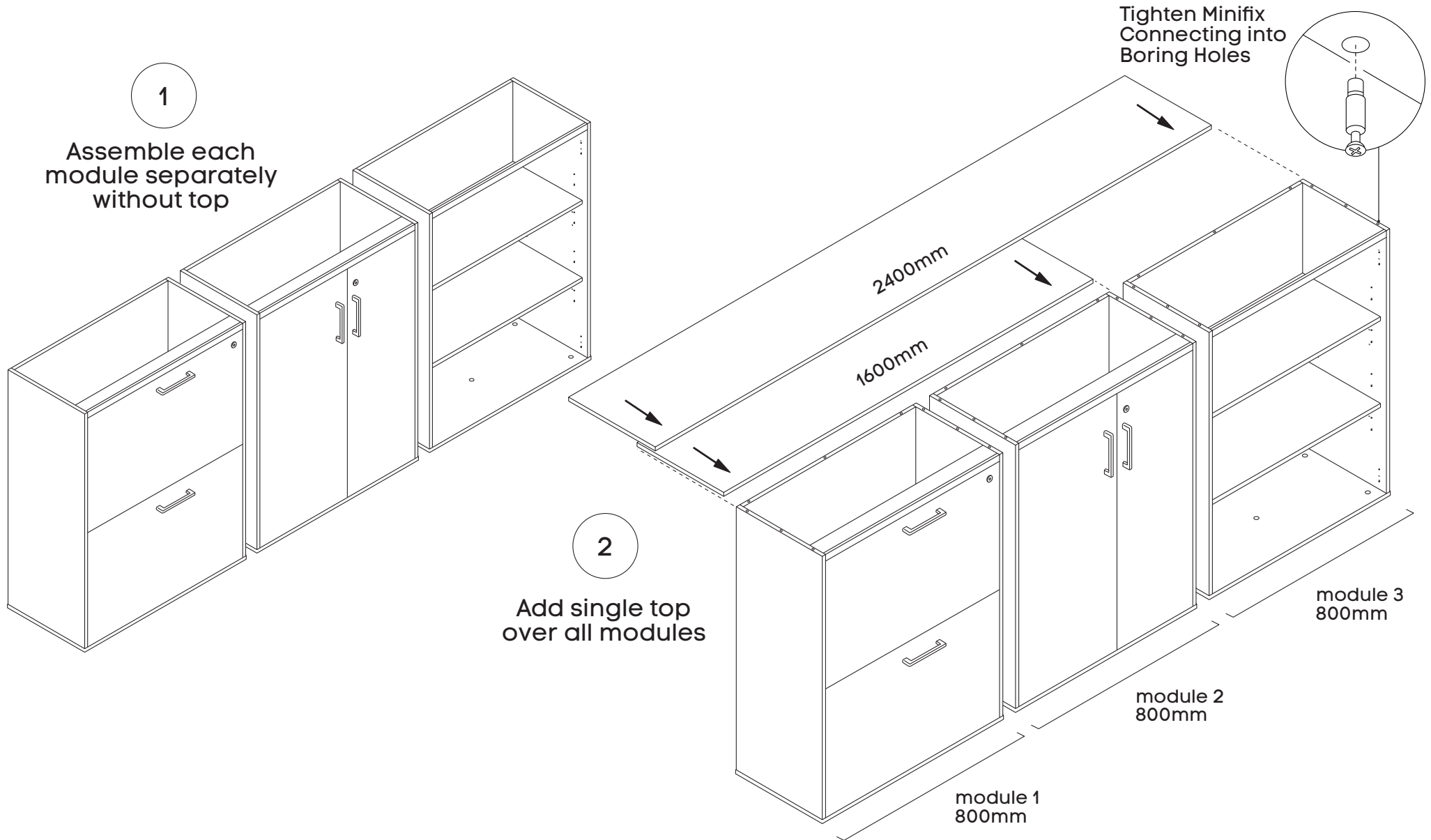
**If you have purchased
storage units that are
1600mm or 2400mm wide**

www.jasonl.com.au

Need help!

Call us on
1300 527 665

jason.l
your office furniture mate



ASSEMBLY INSTRUCTIONS

Small 2 Drawer Lateral 2 Door Cupboard

Size (mm): 1600W x 450D x 750H

www.jasonl.com.au

Need help!

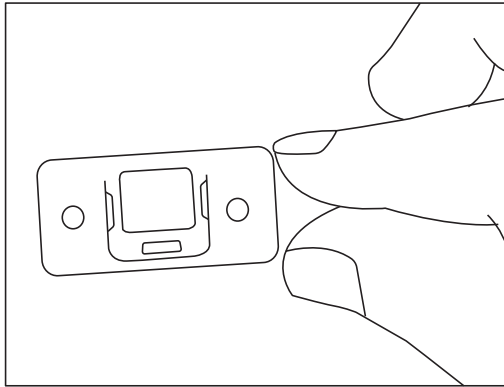
Call us on
1300 527 665

jason.l
your office furniture mate

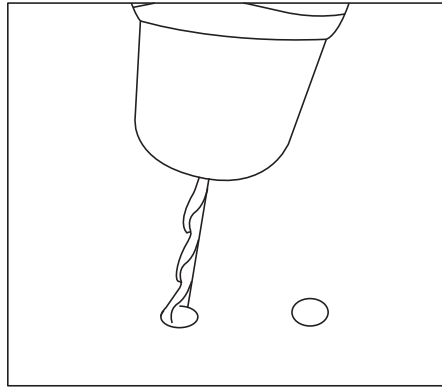


Safety hook *

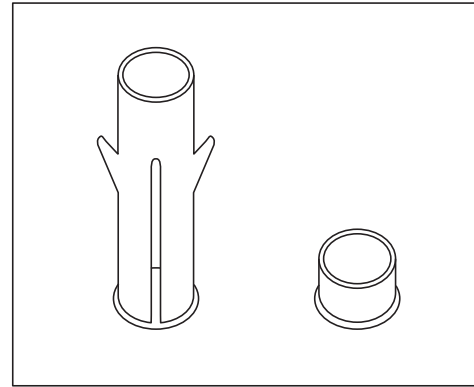
Large furniture provides ample storage space while making your home look great. If you have kids at home, you should firmly secure your large and heavy furniture to prevent it from toppling.



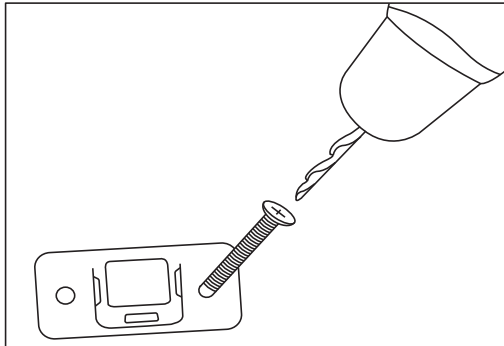
First set the location for install



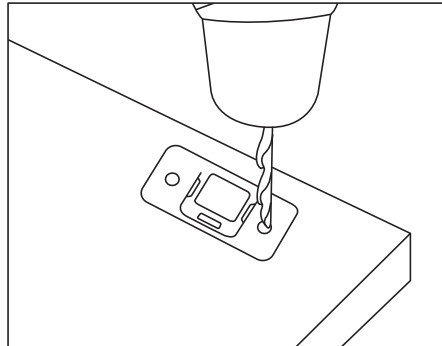
Select the location where the wall is installed and punch Ø8 mm



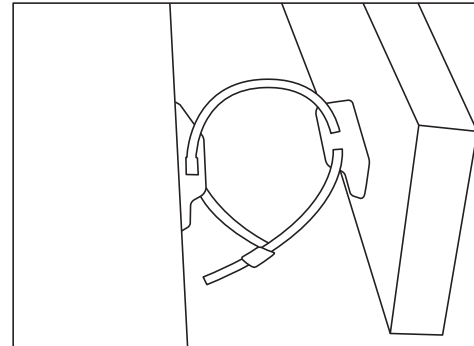
Install the screw expansion tube into the hole



Mounting screws

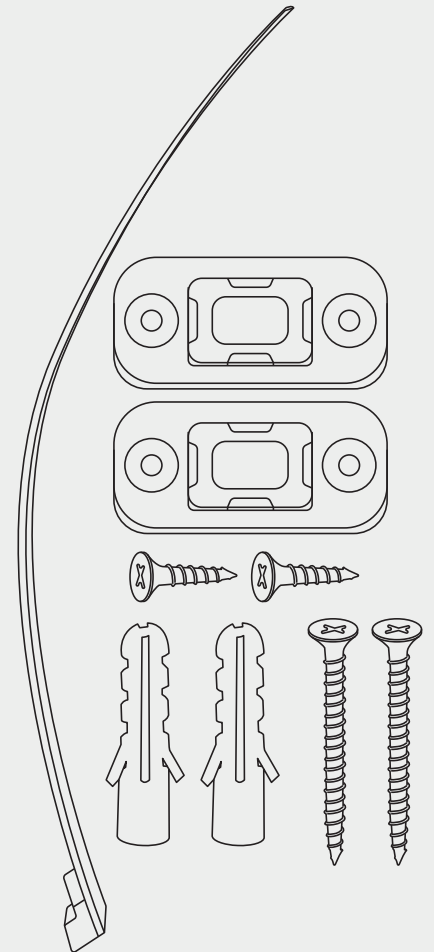


Choose a location that is fixed in the furniture



Adjust the distance of the connecting belt and complete the installation

Components included



JasonL strongly recommends that the safety hook will be utilized in all circumstances to prevent falls when the bookcase is installed on uneven ground, is unevenly packed or is interfered with by pets, children, or as a result of any other household or commercial activity. We disclaim all liability for any loss occasioned in the event that the safety hook is not used or has been improperly installed