

ASSEMBLY INSTRUCTIONS

Sapphire Round Disc Base

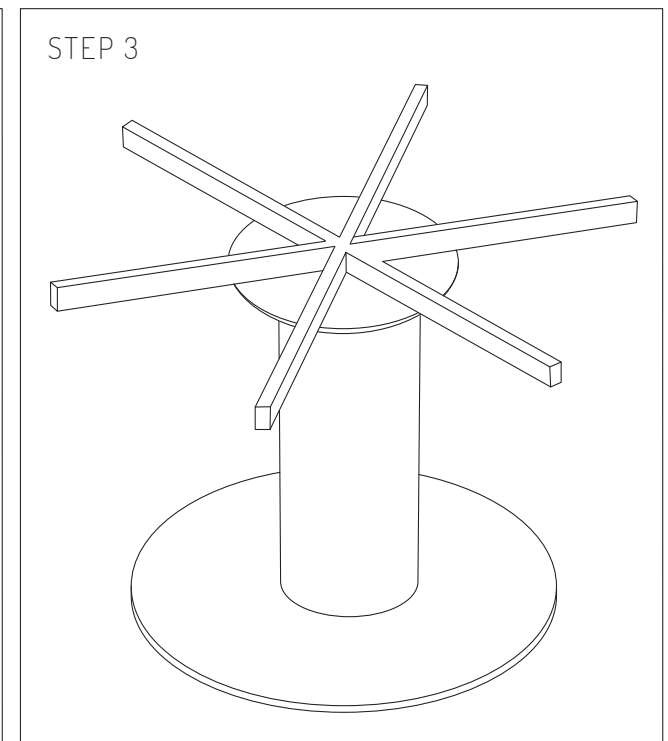
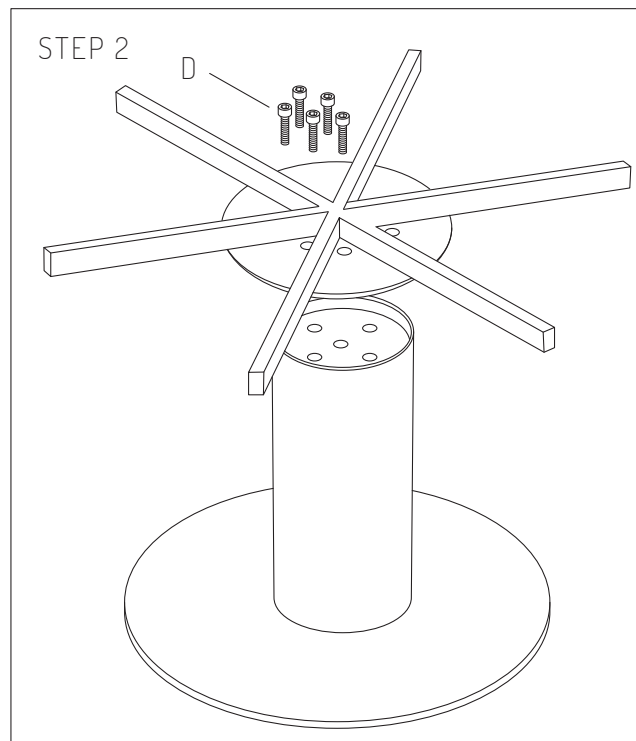
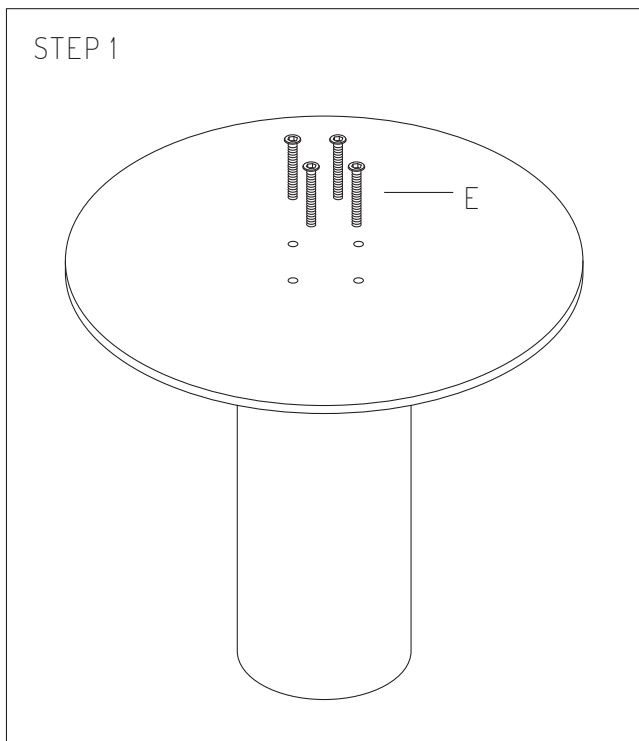
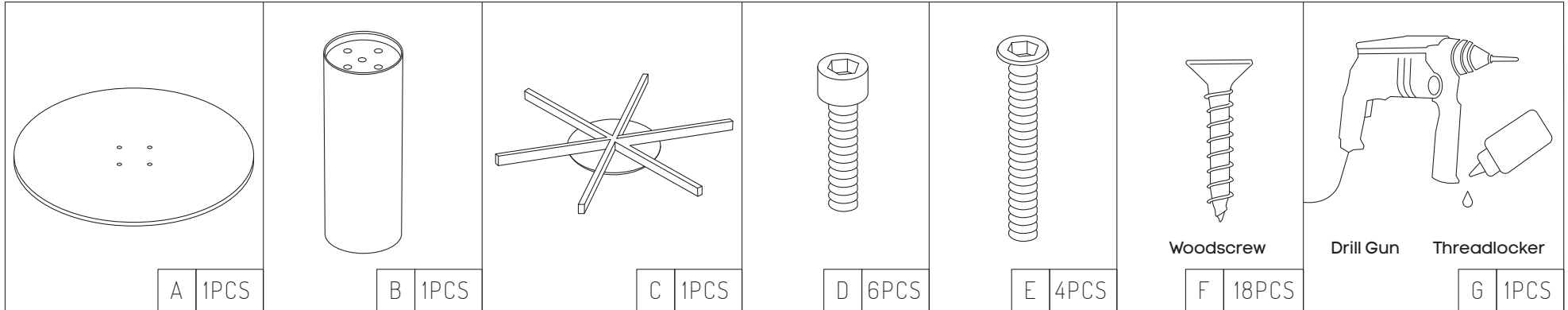
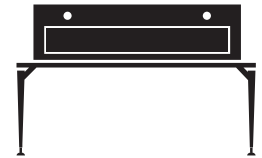
Sizes: 1350D / 1500D mm

www.jasonl.com.au

Need help!

Call us on
1300 527 665

jason.l
your office furniture mate



Note: To achieve the best results, we strongly recommend using an impact drill gun together with thread locking all screws.

Sapphire Round Disc Base

Sizes: 1350D / 1500D mm

Need help!

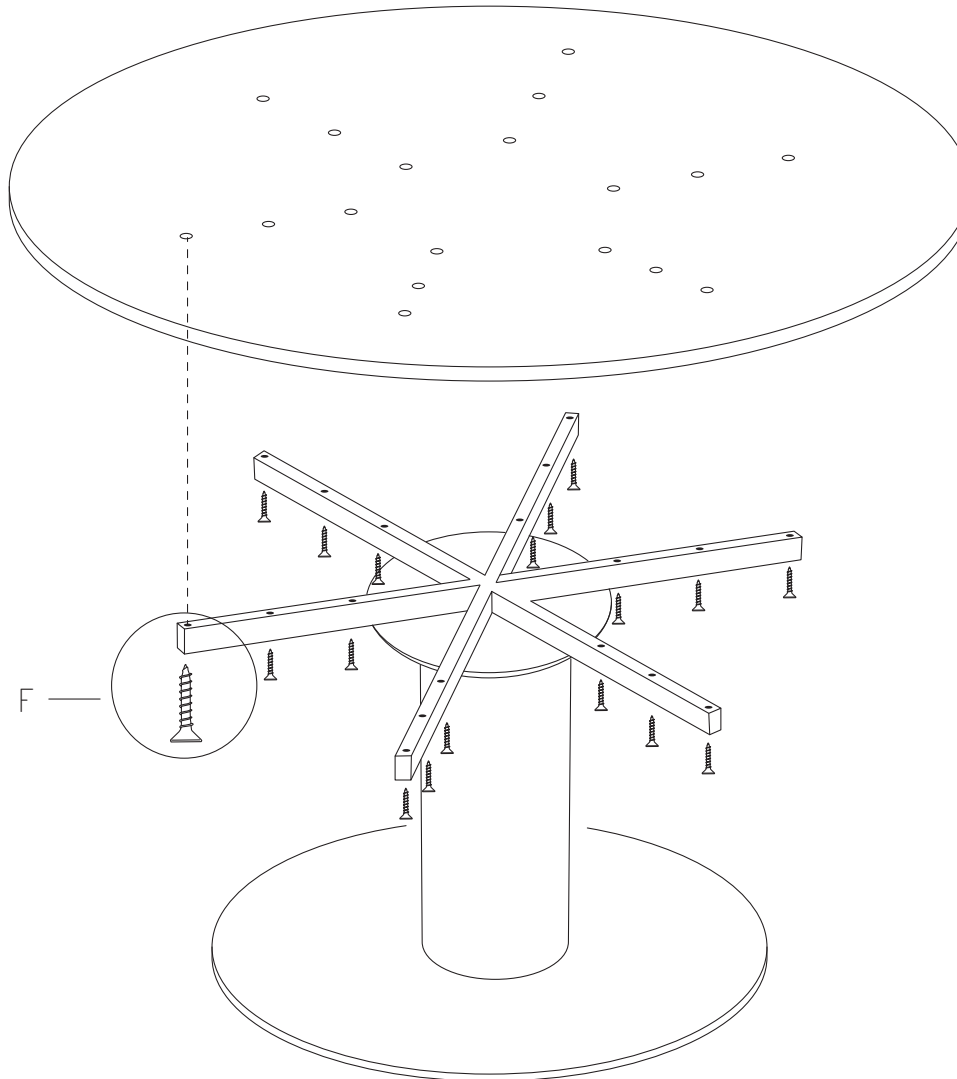
Call us on
1300 527 665



STEP 4

Adding the top

Screw the table top to the base from the underneath of the table, using wood-screws through the following holes.



Note: To achieve the best results, we strongly recommend using an impact drill gun together with thread locking all screws.

ASSEMBLY INSTRUCTIONS

Sapphire Round Disc Base

Sizes: 1350D / 1500D mm

www.jasonl.com.au

Need help!

Call us on
1300 527 665

jason.l
your office furniture mate



Assembly completed

