

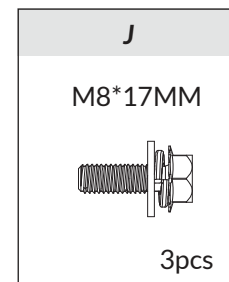
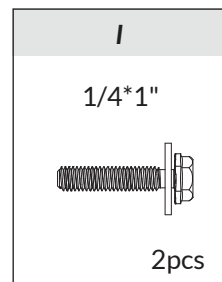
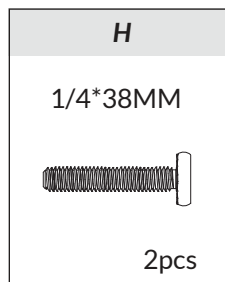
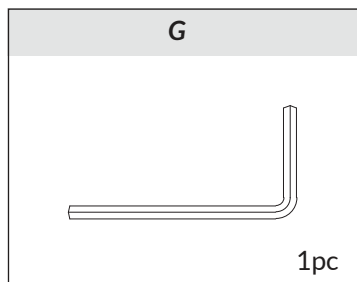
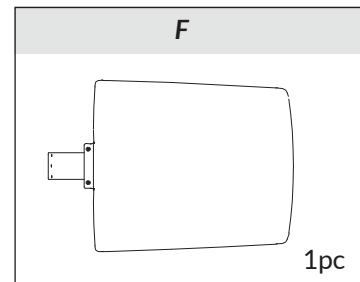
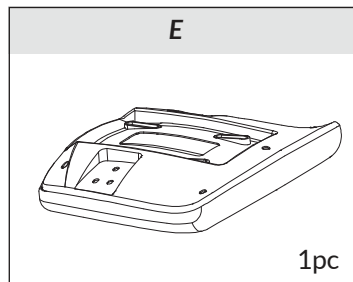
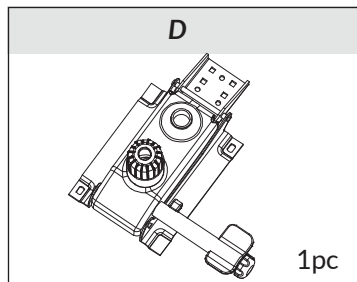
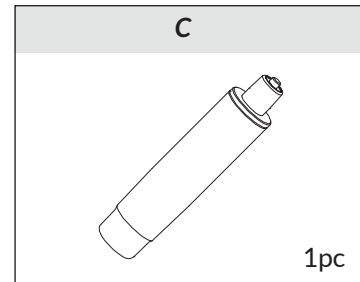
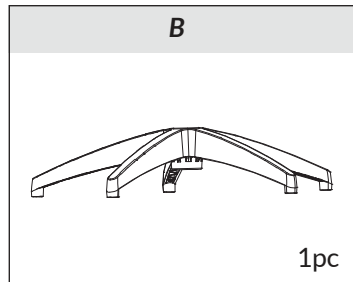
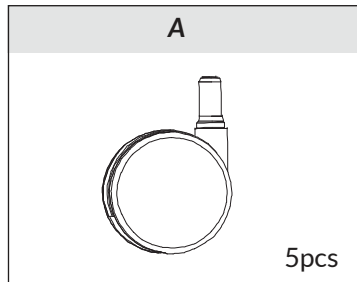
# Rosella Chair No Arms

**Need help!**

Call us on  
**1300 527 665**

**jason.l**  
your office furniture mate

## PARTS



## NOTES AND WARNINGS:

Please check all componets before assembling the chair.

# Rosella Chair No Arms

www.jasonl.com.au

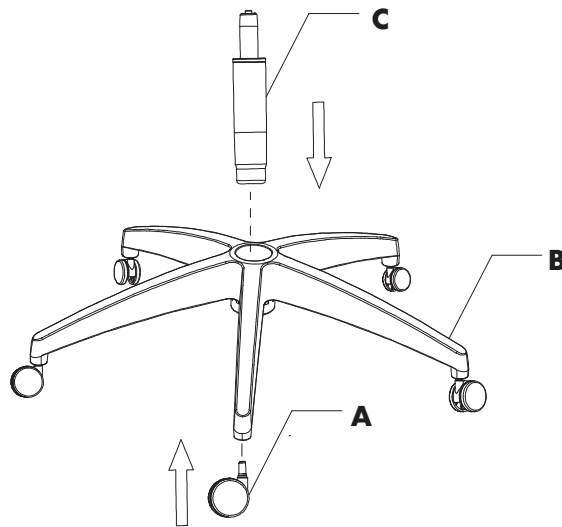
**Need help!**

Call us on  
**1300 527 665**

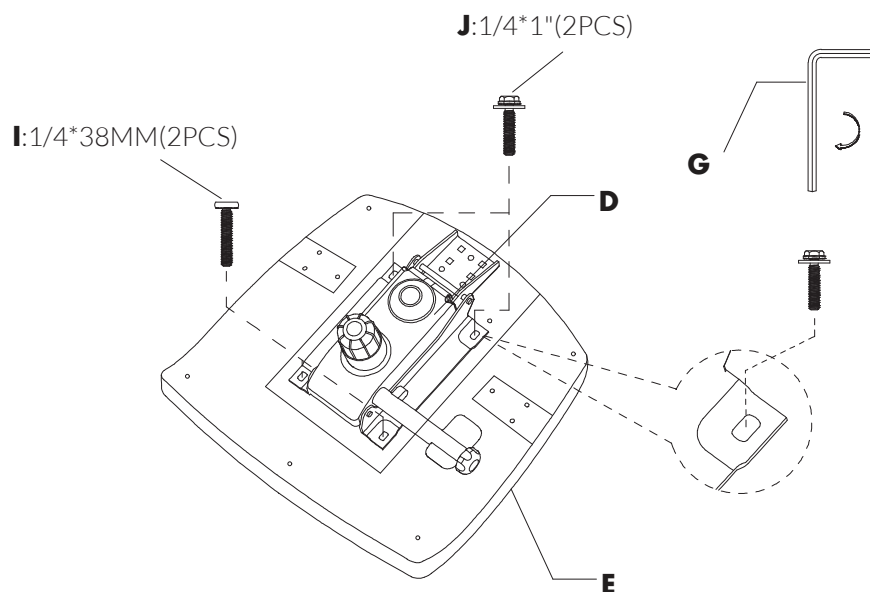
**jason.l**  
your office furniture mate

## INSTRUCTIONS:

### STEP 1:



### STEP 2:



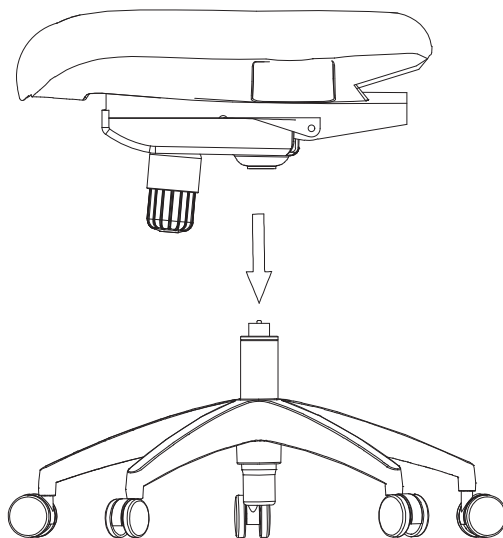
# Rosella Chair No Arms

**Need help!**

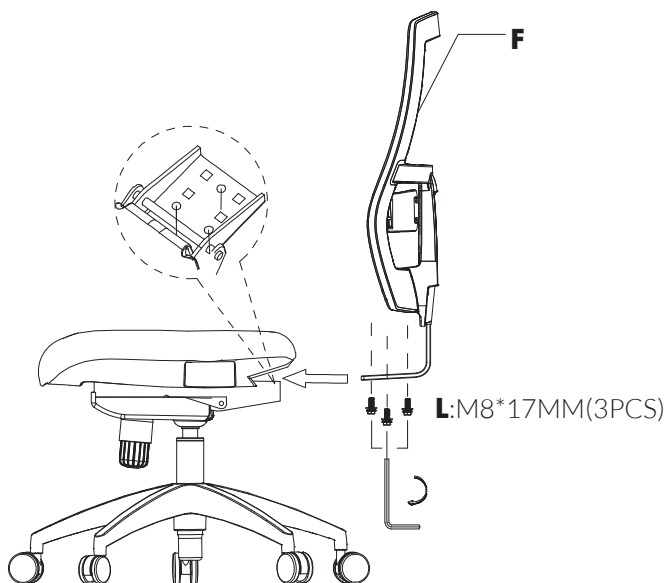
Call us on  
**1300 527 665**

**jason.l**  
your office furniture mate

## STEP 3:



## STEP 4:



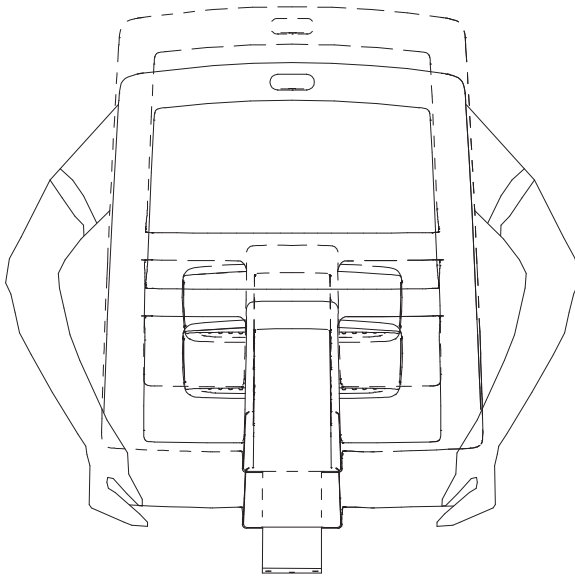
# Rosella Chair No Arms

**Need help!**

Call us on  
**1300 527 665**

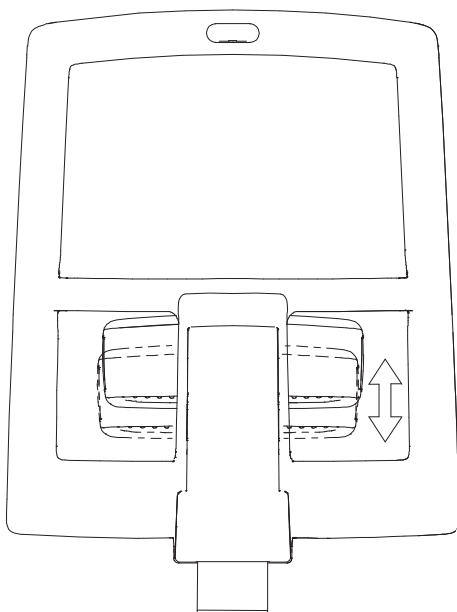
**jason.l**  
your office furniture mate

## STEP 5:



Hold the lower end of backrest with both hands, pull up or down, that is to achieve backrest lift function, lift trip 60mm.

## STEP 6:



Both hands pull the waist up and down slide, adjustable waist travel 80mm.

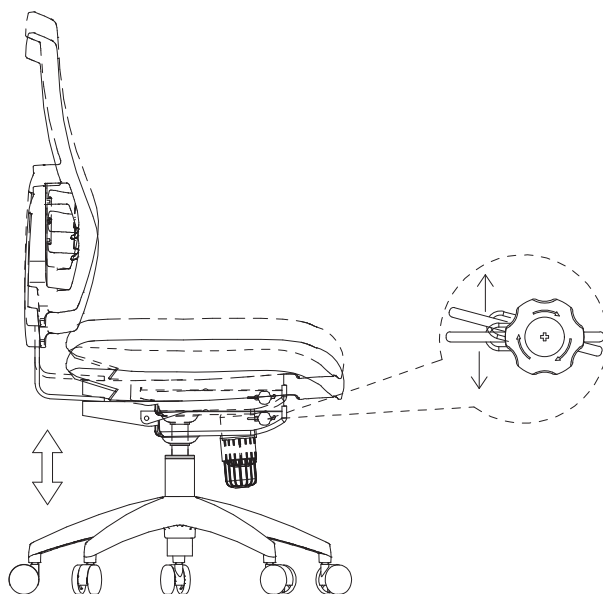
# Rosella Chair No Arms

**Need help!**

Call us on  
**1300 527 665**

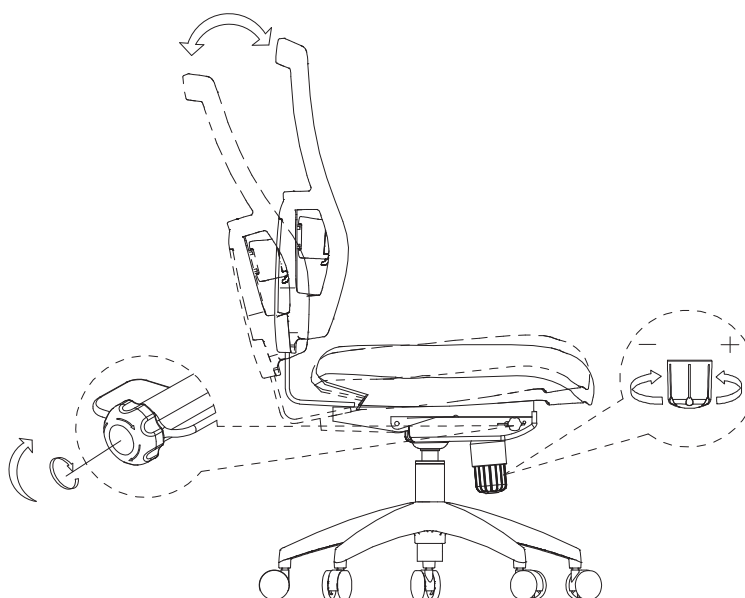
**jason.l**  
your office furniture mate

## STEP 7:



Adjusting the seat height

## STEP 8:



Always rotate clockwise for locking and unlocking.

Adjusting the tilt tension.

# Rosella Chair No Arms

**Need help!**

Call us on  
**1300 527 665**

**jason.l**  
your office furniture mate

---

## NOTES AND WARNINGS:

- Do not sit on any part other than the seat, this product only for one person sit at a time.
- Do not stand on the chair or sit on the edge of the seat.
- Do not use the product as a step stool or carrier.
- Do not insert fingers or hand into movable parts or crevices.
- Disassembling or repairing the product by yourself is dangerous. If any questions on the chair, be sure to contact our distributors for any necessary disassembly/repair.
- Do not modify the product. Our company will not be responsible for any malfunctions and injuries caused by customers' self renovation.
- For the safety, please check all the bolts and screws at least every 6 months.
- Do not use the chair unless all of bolts and screws are fixed.
- Please use the chair indoor or in the similar environments, it may cause deformed or mould if the chair is placed outdoor or the place with water.
- Avoid keeping the product in extremely hot, very humid or dry places, as this can lead to deformation, discoloration, and mould formation.
- Avoid keeping the product in direct sunlight, as this may cause deformation or discoloration. If you assemble up the product nearby a window, ensure that direct sunlight is always blocked by a curtain, blind, etc.
- Avoid places where the product is directly exposed to heat from heaters, air conditioners, etc., as this can cause deformation and discoloration.
- When the interior of the room becomes hot and humid (over 28°C, relative humidity over 50%), ensure that a window is open.
- Please do not tear armrest pad cover up.
- When moving the chair, please use 2 hands to push the chair or have 2 people to carry the seat pan to move the chair, pls do not pull or drag the head rest for the movement.
- If any part is broken or lost, stop using the product until repairs are made and please contact our sales department accordingly.