

# ASSEMBLY INSTRUCTIONS

## Quadro Square desk

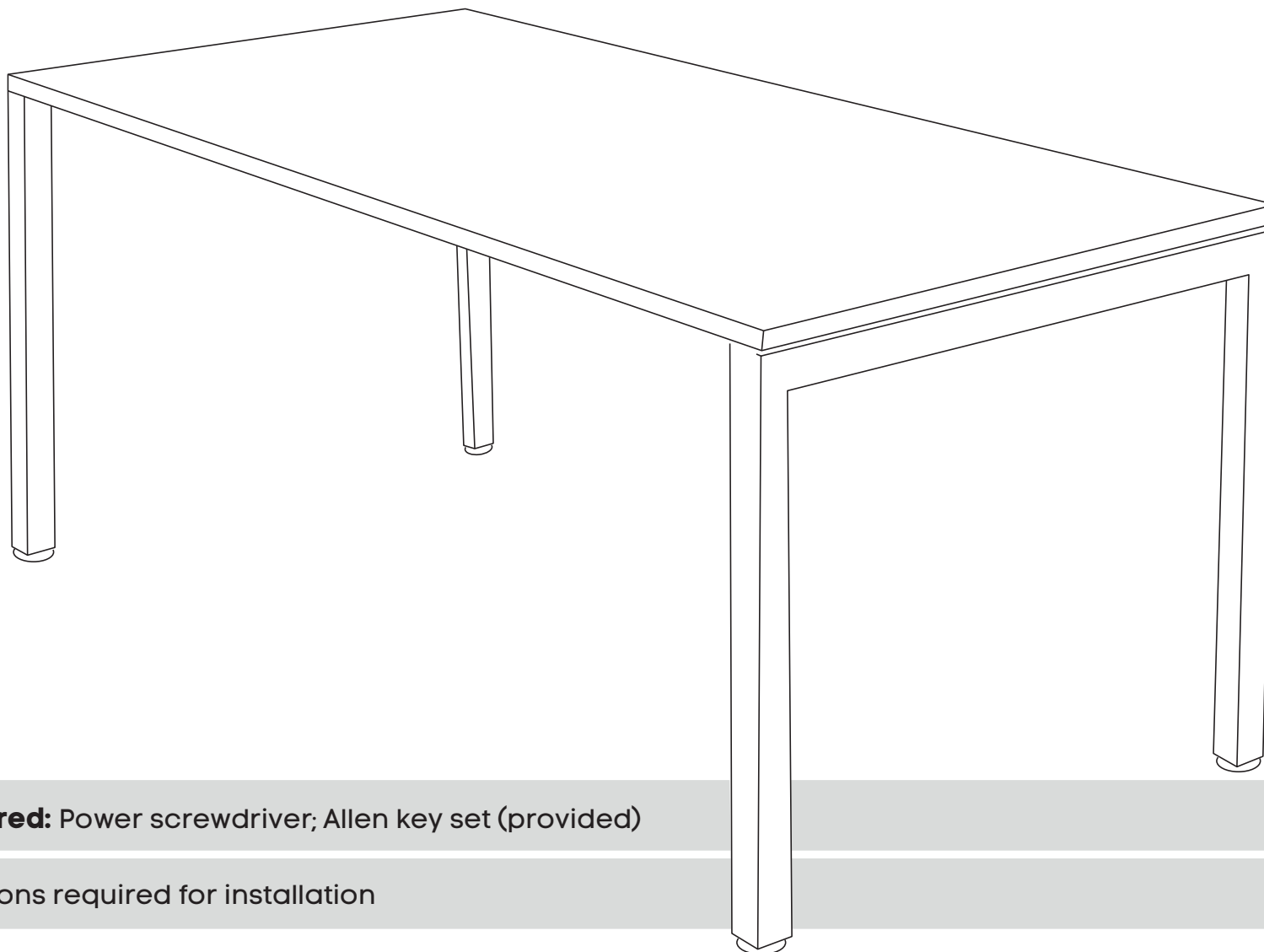
Size: 1000L x 600W mm

[www.jasonl.com.au](http://www.jasonl.com.au)


**Need help!**

Call us on  
**1300 527 665**

**jason.l**  
your office furniture mate



**Tools Required:** Power screwdriver; Allen key set (provided)

 2 persons required for installation

# ASSEMBLY INSTRUCTIONS

## Quadro Square desk

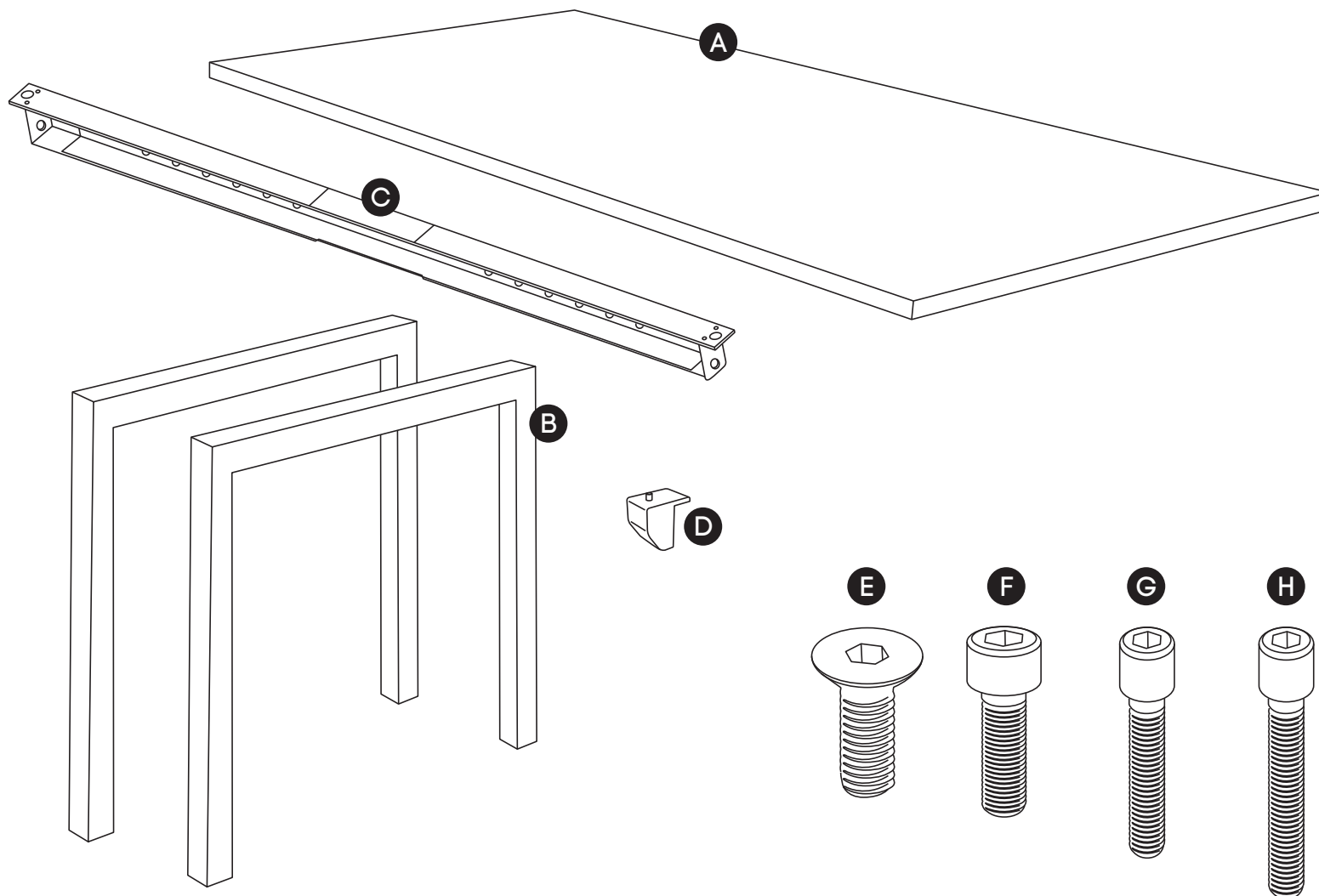
Size: 1000L x 600W mm

[www.jasonl.com.au](http://www.jasonl.com.au)

**Need help!**

Call us on  
**1300 527 665**

**jason.l**  
your office furniture mate



### COMPONENTS

- A Table top x1
- B Legs Quadro Square x2
- C Beam x1 \*
- D Plastic bracket x4

### SCREWS

- E M8x20MM CSK x1
- F M8x20MM Socket head x1
- G M6x20MM Socket head x2
- H M6x30MM Socket head x2

- I Allen key x2

\* Colour of the beam is always black, regardless desk frame colour.

# ASSEMBLY INSTRUCTIONS

## Quadro Square desk

Size: 1000L x 600W mm

[www.jasonl.com.au](http://www.jasonl.com.au)

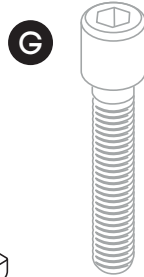
**Need help!**

Call us on  
**1300 527 665**

**jason.l**  
your office furniture mate

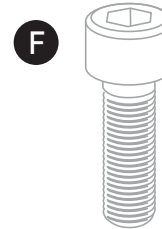


### STEP 01



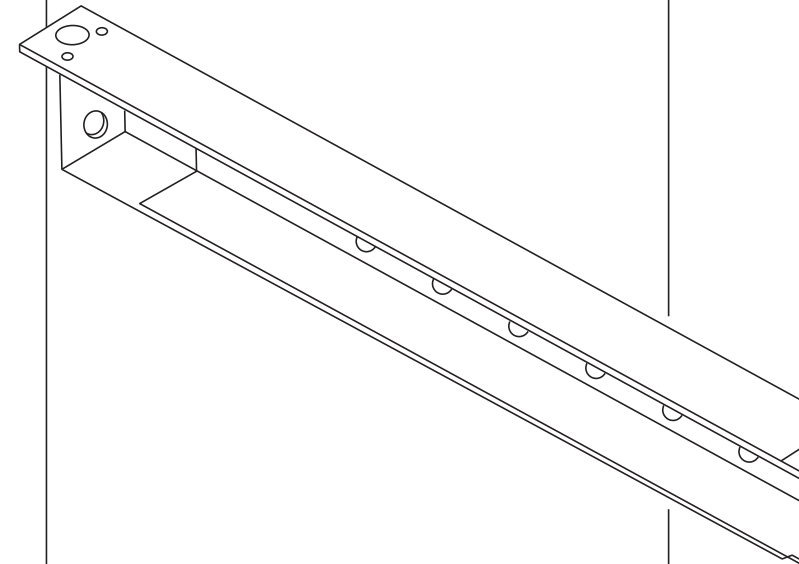
Using Allen Key provided, attach 2 plastic brackets per leg **(D)** (as per picture above) using M6x20MM **(G)** Socket head screw

### STEP 02



Using Allen Key provided, attach M8x20MM Socket head **(F)**- screw socket half way into leg for both legs **(B)**

### STEP 03



Use fixed beam **(C)** 1000mm and secure beam using screws provided to suit 1000mm desk

# ASSEMBLY INSTRUCTIONS

## Quadro Square desk

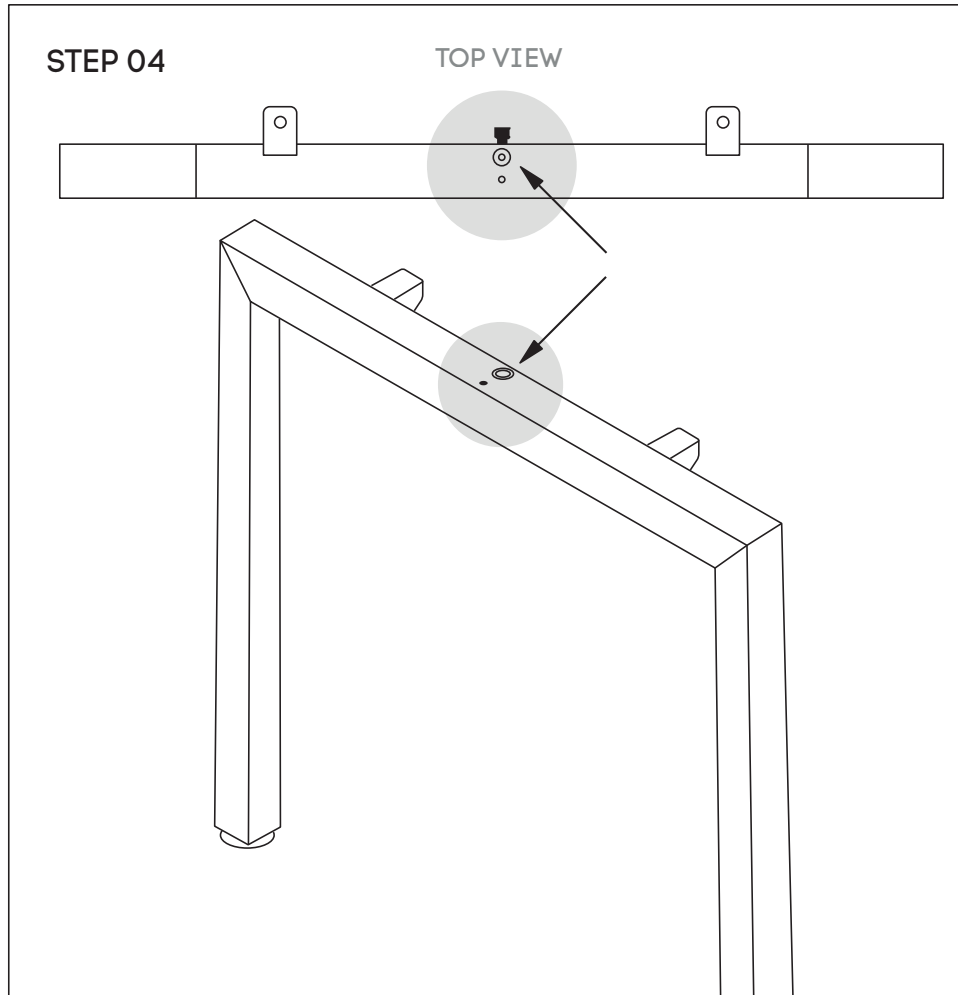
Size: 1000L x 600W mm

[www.jasonl.com.au](http://www.jasonl.com.au)

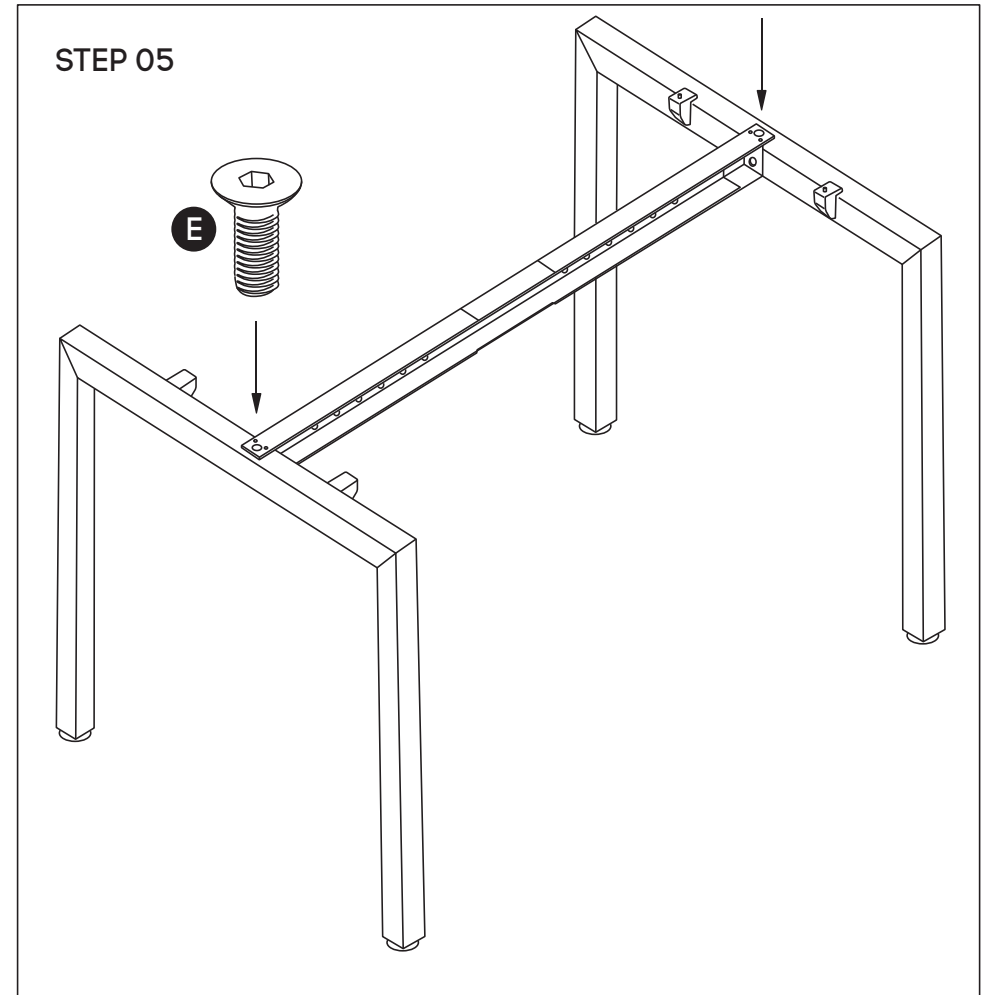
**Need help!**

Call us on  
**1300 527 665**

**jason.l**  
your office furniture mate



Attach beam **(C)** to legs **(B)** using nut insert in legs  
See point attached



Frame looks like this. Using Allen Key, attach beam **(C)** with Socket **(E)**

# ASSEMBLY INSTRUCTIONS

## Quadro Square desk

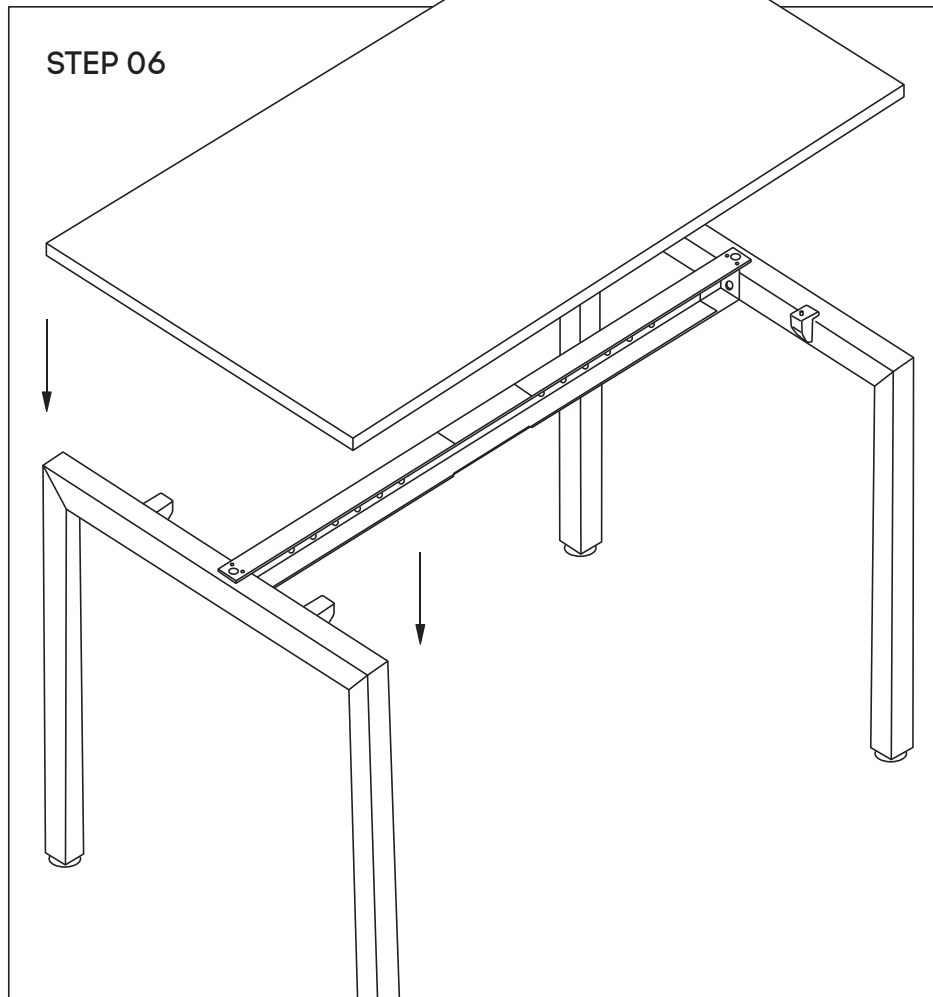
Size: 1000L x 600W mm

[www.jasonl.com.au](http://www.jasonl.com.au)

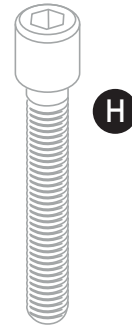
**Need help!**

Call us on  
**1300 527 665**

**jason.l**  
your office furniture mate



Place desktop on top of frame. Nut inserts in top will align with plastic joiner brackets using M6x30MM (H) sockets attached top to frame.



**H**

TABLE TOP  
BOTTOM VIEW

