

**Autex  
Acoustics®**

# Composition® Peel 'n' Stick Tiles

# Install Instructions

These installation instructions are of a general nature and designed to assist suitably experienced tradesmen to install Autex Composition® Peel 'n' Stick direct to solid substrates to a high standard.

Composition Peel 'n' Stick Tiles feature a pressure-sensitive adhesive backing. Once applied, the tiles cannot be repositioned. Removal may cause damage to paint/plasterboard or other surfaces.

For installation support, contact your Autex Account Manager before you start.

## Manufacturer's Documents

Autex accepts no responsibility where installation instructions are not followed. These installation guidelines are meant for installers with some basic trade experience and are not a step-by-step guide. If you have any questions about the installation techniques for your particular project please contact your distributor.

Manufacturer's documents relating to work in this section are:

Autex Composition Peel 'n' Stick Tiles Data Sheet

Autex Composition Peel 'n' Stick Tiles Manufacturer's Warranty

Autex Composition Peel 'n' Stick Tiles Install Instructions

Copies of the above literature are available on request or from the Autex website.

## Tools Required

Snap-off knife and blades, straight edge, hand roller or domestic rolling pin, cutting board or flat cutting surface.

## Storage

Tiles must be laid flat and stored indoors on a solid, dry surface, not in direct sunlight. Do not stack on a concrete floor or any other surface that emits moisture. Optimum storage conditions are 25°C with 60% relative humidity.

## Environmental conditions during installation

The room temperature should not be less than 18°C. Relative humidity must not be above 75% during installation. Environmental conditions outside of this range may affect adhesive properties.

## Surface Preparation General

Prior to installation ensure all surfaces are flat, dry, sound, and free from dust or other contaminants.

Some paints contain additives that could make a permanent bond difficult to achieve. When you suspect the paint or coating may contain these additives, sanding the wall with a fine sand paper or steel-wool can help improve adhesion. Ensure the surface is washed down to remove any residual dust from this process.

All surfaces should be washed with a detergent that will not leave a residue, and should be allowed to dry fully.

For more advice on specific applications, please contact your local distributor.

We recommend that one tile be installed first to ascertain the suitability of the surface and preparation.



## Surface Preparation Block and uneven surfaces

High and low spots should be levelled to provide an even wall surface. Concrete block walls must be fully rendered. New concrete walls must have had sufficient time to cure - generally 28 days. Walls must be free of hydrostatic pressure, moisture, and excessive alkalinity. Efflorescence (white powder) on the surface must be removed. In any of these instances, a suitable sealer/primer must be first applied and allowed to dry. All dust must be removed by wiping down with a wet cloth. Allow the surface to dry completely.

Concrete walls may be subject to condensation or low surface temperatures and must be dried/warmed prior to installation.

## Before Installing/ Pre-Conditioning

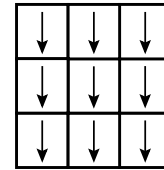
Prior to installing Composition Peel 'n' Stick Tiles, remove the packaging and allow the tiles to acclimatise to room temperature and humidity for approximately 1-2 hours. Ideally both the room temperature and humidity during acclimatisation and installation should be the same as the normal operating conditions of the environment.

## Installation

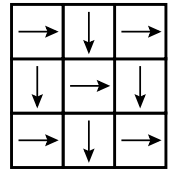
Do not remove the release film on the tile until immediately prior to installation. Once the film has been removed, the tile must not be exposed to any moisture or dust.

Composition Peel 'n' Stick Tiles have a pile direction indicated by the arrows on the back of the tiles. They must be laid with all the arrows in the same direction for uniformity or, as per the diagram, in a checkerboard style.

We recommend installing the tiles with the arrows pointing down. Where different colours are used together, all tiles should be laid in the same direction.



One direction



Checkerboard

## Changing the tile direction will create the appearance of slight colour variation

Carefully plan out your installation and ensure you have the required number of tiles for the job.

Measure and mark the area to be covered with Composition Peel 'n' Stick Tiles on the wall. Use a spirit level to ensure your lines are horizontally and vertically straight (it's a good idea to lay the tiles out on the floor to check the pattern first). Check the distance from the marked centre to the adjacent walls to ensure that you will have a reasonable size cut at either end. If necessary, adjust the marked centre accordingly.

Start the first tile at the junction. Remove the release film and hold the tile at an angle to the wall; apply one edge to the line and then place the tile onto the wall (Fig.1). Apply firm pressure from the centre of the tile out to the edges to ensure good adhesion.

A roller must be used to firmly push the whole surface of the tile to the wall.

Stick down the first row of tiles working to one side of the room. Subsequent tiles should be laid up against the previous tile, holding the tile at an angle to the wall and then placing down.

To cut tiles in along adjacent walls, place the tile to be cut under the next tile nearest the wall and use that tile as your guide. Peel 'n' Stick Tiles can be cut with a snap-blade knife and straight edge.

Re-roll all tiles when the job is complete to ensure good adhesion. Please note: batches are sequentially numbered - the beginning of the number being the batch and the end digits being pack sequence.



---

## On Completion

Leave work to the standard required by following procedures. Leave work secure, smooth and free of gaps, stains and blemishes and to the standard required by following procedures. Clean adjoining surfaces of any adhesive. Remove debris, unused materials and waste from site.

---

## Service

For more information, contact your Autex Account Manager or visit our website.

[www.jasonl.com.au](http://www.jasonl.com.au)

**Need help!**  
**Call us on**  
**1300 527 665**

**jason.l**  
your office furniture mate

