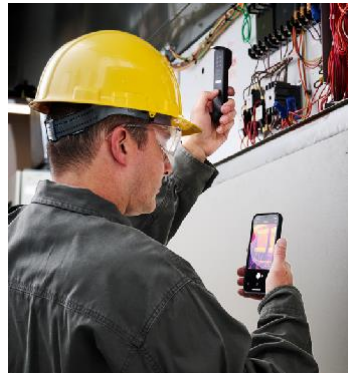


# FLIR ONE® EDGE PRO

Thermal Camera with Wireless Connectivity  
for iOS® and Android™ Smart Devices



The FLIR ONE Edge Pro is an innovative, rugged thermal imager that wirelessly connects to your smart device so you can remotely inspect out-of-reach targets - or clip it onto your phone or tablet for one-handed operation. Combining VividIR™ and FLIR MSX®, you can take crisp thermal images from any position or angle with a natural grip. FLIR Ignite™ allows you to easily upload images and videos from your FLIR ONE Edge Pro to the cloud where you can edit, organize, store, and share data. Compatible with iOS and Android smartphones and tablets, the FLIR ONE Edge Pro can be used without limitations, regardless of carrier, operating system, size, or future smart device upgrades.



Mobile phone not include

[www.flir.com/FLIRONE-EdgePro](http://www.flir.com/FLIRONE-EdgePro)

## EASILY INSPECT ANYWHERE

Measure targets in difficult-to-reach areas from any angle, and enhance visibility through remote monitoring

- Remotely inspect hazardous areas up to 30 m (100 ft) away
- Operate with one hand by clipping the FLIR ONE Edge Pro to your smart device
- Conveniently scan out-of-reach or out-of-view targets, holding the FLIR ONE Edge Pro in one hand and your smart device in the other for a clear view of your screen
- Wireless connectivity eliminates compatibility issues and allows you to upgrade your smart device without the need to replace your thermal camera

## HIGH-QUALITY IMAGES AND PERFORMANCE

Inspect areas accurately with FLIR proprietary image enhancement features

- Easily recognize where problems are located and identify targets with FLIR MSX® (Multi-Spectral Dynamic Imaging)
- Take crisp, clear images with 160 × 120 (19,200 pixels) thermal resolution and VividIR, which combines multiple image frames together to deliver a sharper image
- Measure temperatures up to 400°C (752°F)
- Rugged design with up to 1.5-hour battery life

## ENHANCE YOUR WAY OF WORKING

Improve efficiency and large enterprise scalability with the FLIR ONE Edge Pro and its apps and services

- Effortlessly edit and store images in the cloud, and wirelessly transfer files using the included FLIR Ignite cloud service
- Step-by-step guidance with FLIR-specific smart device apps
- Simple integration with FLIR Thermal Studio and FLIR Ignite software

## SPECIFICATIONS

<b>FLIR ONE® Edge Pro</b>		<b>Interfaces</b>	
Thermal pixel size	12 µm	Wi-Fi	IEEE 802.11 a/b/g/n
Thermal resolution	160 × 120 (19,200 pixels)	Bluetooth®	Bluetooth
Thermal sensitivity	70 mK	Charging	Female USB-C (5V/1A)
<b>Measurement</b>		Remote operation	Up to 30 m (100 ft) from smart device via Wi-Fi
Object temperature range(s)	-20°C to 120°C (-4°F to 248°F) 0°C to 400°C (32°F to 752°F)	<b>App</b>	
Operating temperature	-10°C to 50°C (14°F to 122°F), battery charging 0°C to 45°C (32°F to 113°F)	Image presentation modes	Infrared, visual, MSX®
Accuracy	±3°C (5.4°F) or ±5%. Applicable 60 sec after start-up when the unit is within 15°C to 35°C (59°F to 95°F) and the scene is within 5°C to 120°C (41°F to 248°F)	VividIR	Yes
Emissivity correction	Matte, Semi-Matte, Semi-Glossy, Glossy	Video and image capture	Yes
Measurement correction	Emissivity; Reflected apparent temperature (22°C / 72°F)	File formats	Radiometric JPG, MPEG-4 [file format MOV (iOS), MP4 (Android)]
Shutter	Automatic/Manual	Spot measurements	Hottest, Coldest, and 3-spot measurement
<b>Optical data</b>		Adjustable MSX distance	30 cm - infinity
Spectral range	8 µm - 14 µm	Visual battery indicator	0% to 100%
Visual resolution	640 × 480	<b>Radio</b>	
HFOV / VFOV	54° ±1° / 42° ±1°	Wi-Fi	Standard: 802.11 a/b/g/n
Frame rate	8.7 Hz	Bluetooth	Frequency range: - 2400-2484 MHz
Focus	Fixed 30 cm - infinity	<b>Accessories</b>	
<b>General features</b>		FLIR ONE Edge Pouch, Ordering #T912180	
Certifications	RoHS, CE/FCC, CEC-BC, EN62133, UL1642, WEEE 2012/19/EU		
Storage temperature	-40°C to 70°C (-40°F to 158°F)		
Size (w × h × d)	35 mm × 37.5 mm × 149 mm (1.4 in × 1.5 in × 5.9 in)		
Weight (incl. battery)	153 g (5.4 oz)		
Drop tested	Drop from 2 m (6.56 ft)		
Clip span	130 mm (min) / 195 mm (max)		
<b>Power</b>			
Battery life	Approximately 1 h 30 min		
Battery charge time	60-90 min for fully charged. 15 min charging, from empty battery, gives 40 min operating time.		

Specifications are subject to change without notice.  
For the most up-to-date specs, go to [www.teledyneflir.com](http://www.teledyneflir.com)

### US Patent-pending design

Distributed by:  
GoThermal (Pty) Ltd / TeleEye (SA) (Pty) Ltd

Unit 9, 4 Homestead Ave  
Bryanston, 2191  
South Africa

Tel: (+27) 11 557 9200  
Email: [Sales@GoThermal.co.za](mailto:Sales@GoThermal.co.za)  
[www.GoThermal.co.za](http://www.GoThermal.co.za)



Apple Store FLIR Apps



Google Play Store FLIR Apps



This product is subject to United States export regulations and may require US authorization prior to export, reexport, or transfer to non-US persons or parties. Diversion contrary to US law is prohibited.

For assistance with confirming the Jurisdiction & Classification of Teledyne FLIR, LLC products, please contact [exportquestions@flir.com](mailto:exportquestions@flir.com).

©2022 Teledyne FLIR, LLC. All rights reserved.

Revised 11/03/22

ProductName\_Datasheet-LTR 21-0000

