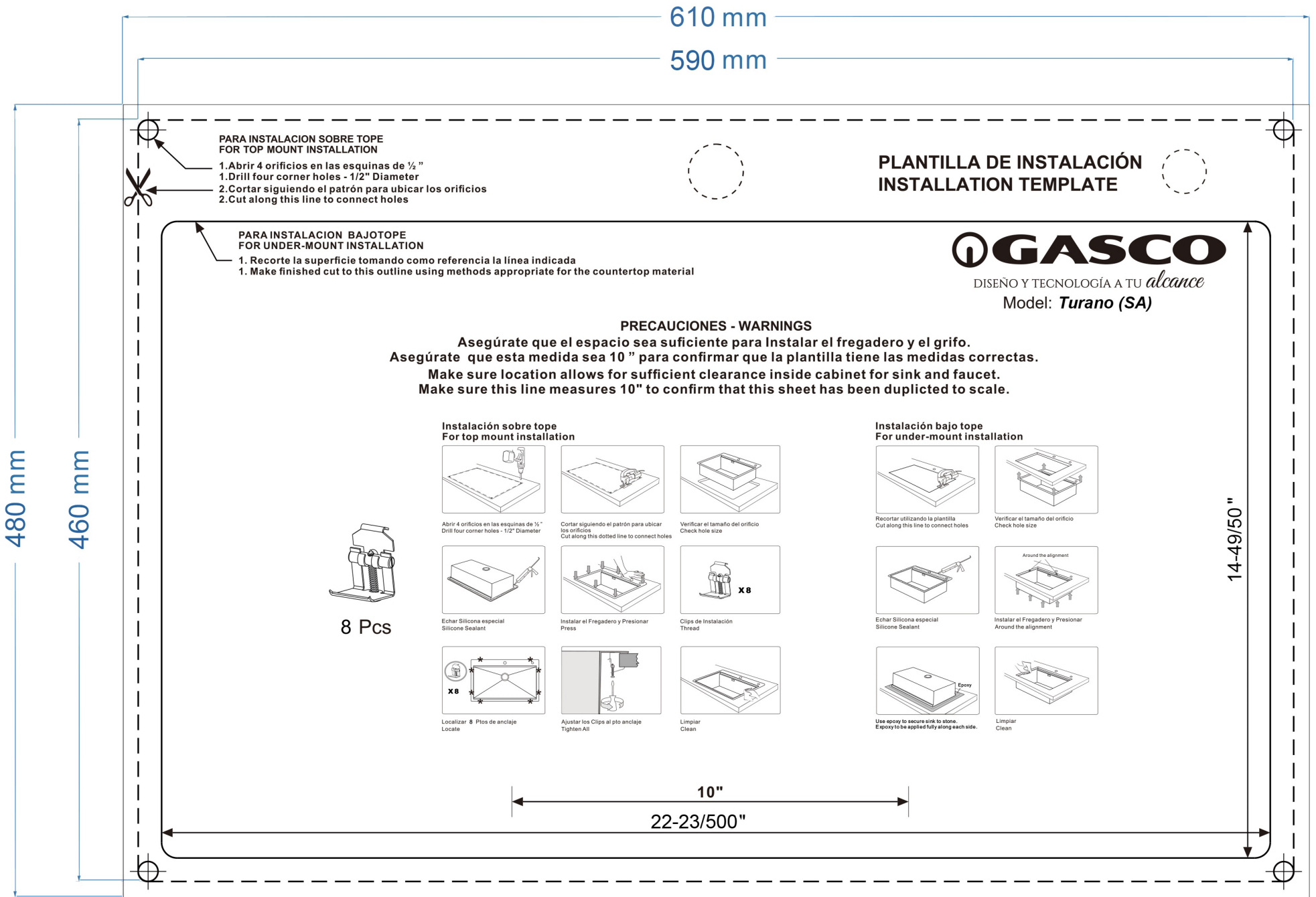


DIAGRAMA DE INSTALACION



**PARA INSTALACION SOBRE TOPE
FOR TOP MOUNT INSTALLATION**

1. Abrir 4 orificios en las esquinas de 1/2"
 1. Drill four corner holes - 1/2" Diameter
2. Cortar siguiendo el patrón para ubicar los orificios
 2. Cut along this line to connect holes

**PARA INSTALACION BAJOTOPE
FOR UNDER-MOUNT INSTALLATION**

1. Recorte la superficie tomando como referencia la línea indicada
 1. Make finished cut to this outline using methods appropriate for the countertop material

**PLANTILLA DE INSTALACIÓN
INSTALLATION TEMPLATE**



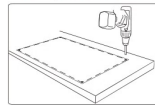
DISEÑO Y TECNOLOGÍA A TU alcance

Model: **Turano (SA)**

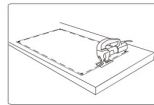
PRECAUCIONES - WARNINGS

**Asegúrate que el espacio sea suficiente para Instalar el fregadero y el grifo.
Asegúrate que esta medida sea 10" para confirmar que la plantilla tiene las medidas correctas.
Make sure location allows for sufficient clearance inside cabinet for sink and faucet.
Make sure this line measures 10" to confirm that this sheet has been duplicated to scale.**

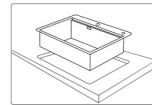
**Instalación sobre tope
For top mount installation**



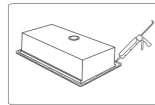
Abrir 4 orificios en las esquinas de 1/2"
 Drill four corner holes - 1/2" Diameter



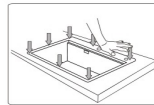
Cortar siguiendo el patrón para ubicar los orificios
 Cut along this dotted line to connect holes



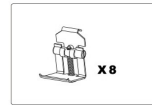
Verificar el tamaño del orificio
 Check hole size



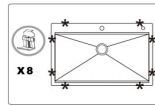
Echar Silicona especial
 Silicone Sealant



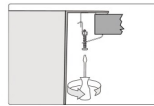
Instalar el Fregadero y Presionar
 Press



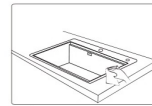
Clips de Instalación
 Thread
 X 8



Localizar 8 Ptos de anclaje
 Locate
 X 8

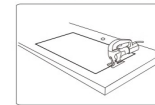


Ajustar los Clips al pto anclaje
 Tighten All

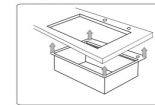


Limpiar
 Clean

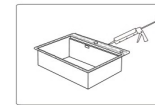
**Instalación bajo tope
For under-mount installation**



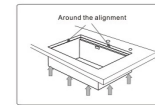
Recortar utilizando la plantilla
 Cut along this line to connect holes



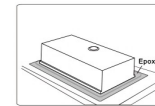
Verificar el tamaño del orificio
 Check hole size



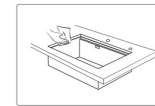
Echar Silicona especial
 Silicone Sealant



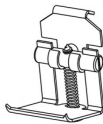
Instalar el Fregadero y Presionar
 Around the alignment



Use epoxy to secure sink to stone.
 Epoxy to be applied fully along each side.



Limpiar
 Clean



8 Pcs

10"
 22-23/500"

14-49/50"