

DIAGRAMA DE INSTALACION

838 mm

814 mm

PARA INSTALACION SOBRE TOPE FOR TOP MOUNT INSTALLATION

1. Abrir 4 orificios en las esquinas de 1/2"
1. Drill four corner holes - 1/2" Diameter
2. Cortar siguiendo el patrón para ubicar los orificios
2. Cut along this line to connect holes

PARA INSTALACION BAJOTOPE FOR UNDER-MOUNT INSTALLATION

1. Recorte la superficie tomando como referencia la línea indicada
1. Make finished cut to this outline using methods appropriate for the countertop material

PLANTILLA DE INSTALACIÓN INSTALLATION TEMPLATE

GASCO

DISEÑO Y TECNOLOGÍA A TU alcance

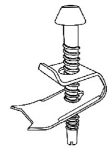
Model: **Sena**

PRECAUCIONES - WARNINGS

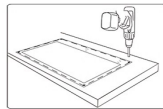
Asegúrate que el espacio sea suficiente para instalar el fregadero y el grifo.
Asegúrate que esta medida sea 10" para confirmar que la plantilla tiene las medidas correctas.
Make sure location allows for sufficient clearance inside cabinet for sink and faucet.
Make sure this line measures 10" to confirm that this sheet has been duplicated to scale.

559 mm

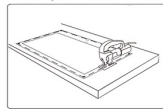
535 mm



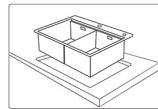
10 Pcs



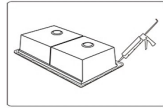
Abrir 4 orificios en las esquinas de 1/2"
Drill four corner holes - 1/2" Diameter



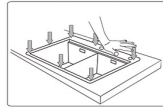
Cortar siguiendo el patrón para ubicar los orificios
Cut along this dotted line to connect holes



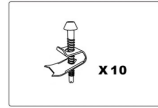
Verificar el tamaño del orificio
Check hole size



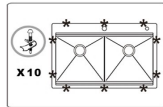
Echar Silicona especial
Silicone Sealant



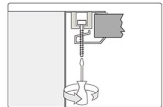
Instalar el Fregadero y Presionar
Press



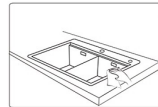
Clips de Instalación
Thread X 10



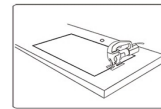
Localizar 10 Ptos de anclaje
Locate X 10



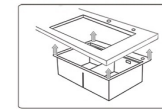
Ajustar los Clips al pto anclaje
Tighten All



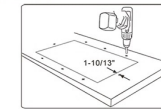
Limpiar
Clean



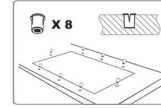
Recortar utilizando la plantilla
Cut along this line to connect holes



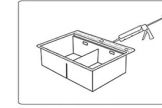
Verificar el tamaño del orificio
Check hole size



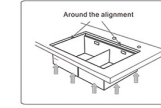
Abrir 8 Orificios - el parte de abajo del Tope. Diámetro 8 profundo 15mm
Drill eight holes on the back ø 10 with depth 15mm on the back



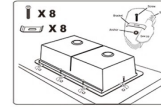
Insertar ramplug en el tope
Anchor X 8



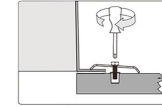
Echar Silicona especial
Silicone Sealant



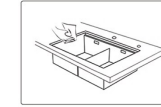
Instalar el Fregadero y Presionar
Around the alignment



Localizar 8 Ptos de anclaje
Locate X 8 X 8



Ajustar los Clips al pto anclaje
Tighten All



Limpiar
Clean



8 Pcs

16-9/13"

10"
30-12/72"