

MCM2 Closure Instructions

1. The contents of the MCM2 package are shown below.



The gauge is part of the Type A Package. The Am241:Be is permanently affixed to inside the gauge.

2. Placing the contents

The interior of the box has pre-formed sections for the placement of the standard block, the gauge, and the scalar in the scalar bag. The manual and other gauge related documents should be packed with the gauge by laying it over the neutron gauge arm and scalar bag.



3. Close the lid.

4. Fastening of the latches

A picture of the latch mechanism is shown below, note the three parts, the catch, the latch bar, and latch eye, and the latch hasp.

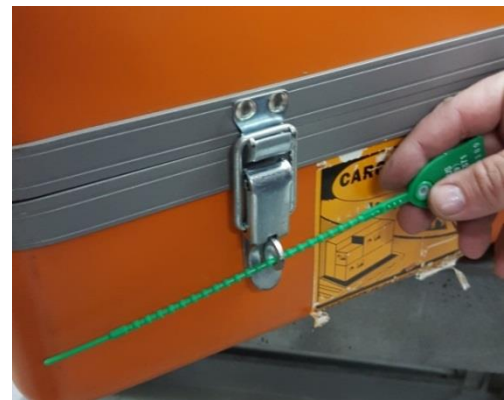


5. Place the latch bar into the catch as shown below. Make sure the latch bar is securely in the catch.



6. Push firmly down on the latch hasp until the latch eye is completely through the latch hasp.

7. In order to secure the latch, insert a wire tie through the eye as shown below.



8. Secure the wire tie or lock as shown above. **You must make sure that the wire tie is of sufficient size that it will not slip through the slot in the latch hasp allowing the case to be opened.**