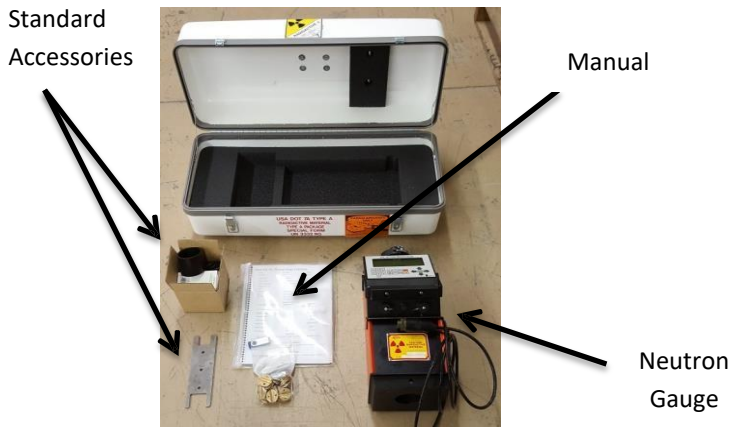


## 503 Closure Instructions

### 1. The contents of the 503 package are shown below.



The gauge is part of the Type A Package. The Am241:Be is permanently affixed inside the source probe which is housed inside the gauge during non-use and transportation.

### 2. Placing the contents

The interior of the box has pre-formed sections for the placement of the gauge, standard accessories, and manual. The manual and other gauge related documents should be packed with the gauge by laying it over the neutron gauge arm.

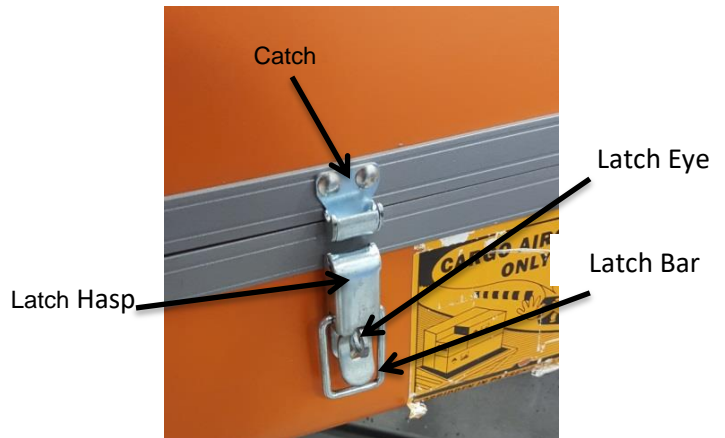


### 3. Close the lid.

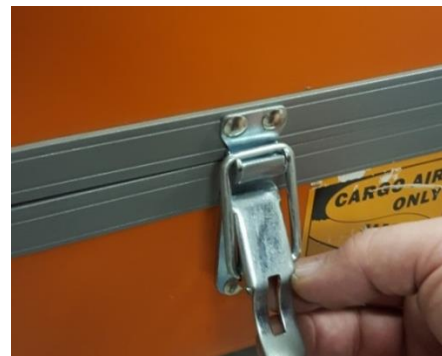
Note: These closure instructions are for both orange and white cases. This case is certified for all version of the 503 series gauges.

### 4. Fastening of the latches

A picture of the latch mechanism is shown below, note the three parts, the catch, the latch bar, and latch eye, and the latch hasp.



5. Place the latch bar into the catch as shown below. Make sure the latch bar is securely in the catch.



6. Push firmly down on the latch hasp until the latch eye is completely through the latch hasp.

7. In order to secure the latch, insert a wire tie or lock through the eye as shown below.



8. Secure the wire tie or lock as shown above. **You must make sure that the wire tie is of sufficient size that it will not slip through the slot in the latch hasp allowing the case to be opened.**