

MASTER-TOUCH PREMIUM

ASSEMBLY GUIDE
GUÍA DE MONTAJE
GUIDE DE MONTAGE



22in



 **BILT.**



Read the owner's guide before using the grill.

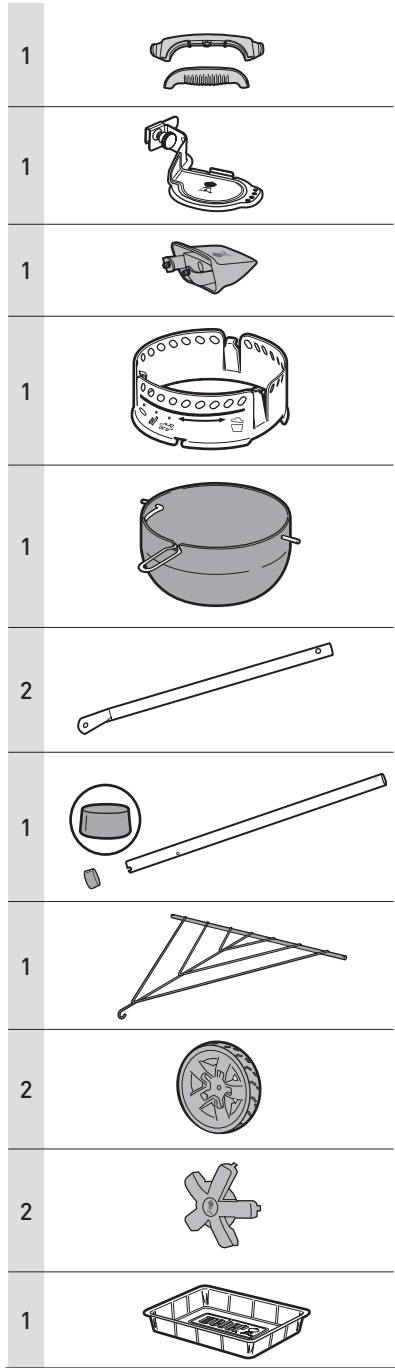
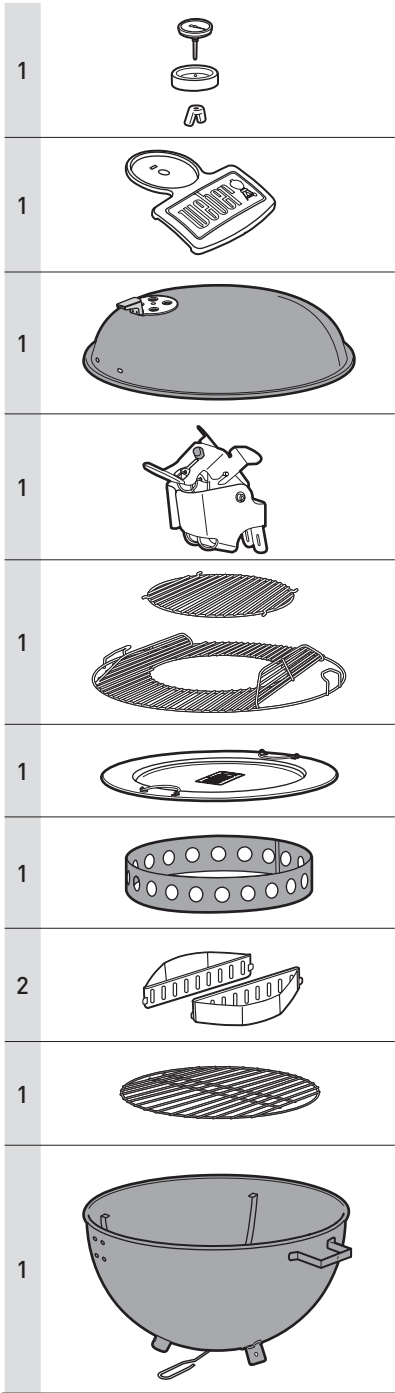
Lea la guía del propietario antes de usar la parrilla.

Lisez le guide du propriétaire avant d'utiliser le gril.

52761

04/01/20

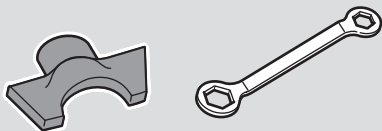
enUS / esMX / frCA



US TOOLS INCLUDED:

esMX HERRAMIENTAS INCLUIDAS:

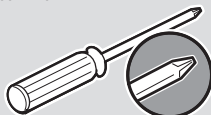
frCA OUTILS INCLUS :



US TOOLS REQUIRED:

esMX HERRAMIENTAS NECESARIAS:

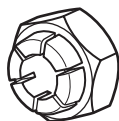
frCA OUTILS NÉCESSAIRES:



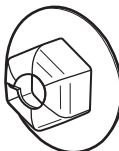
2



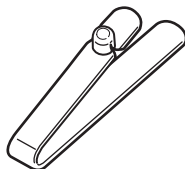
6



3



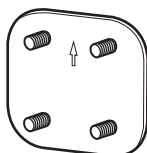
3



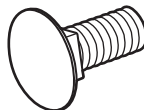
1



1



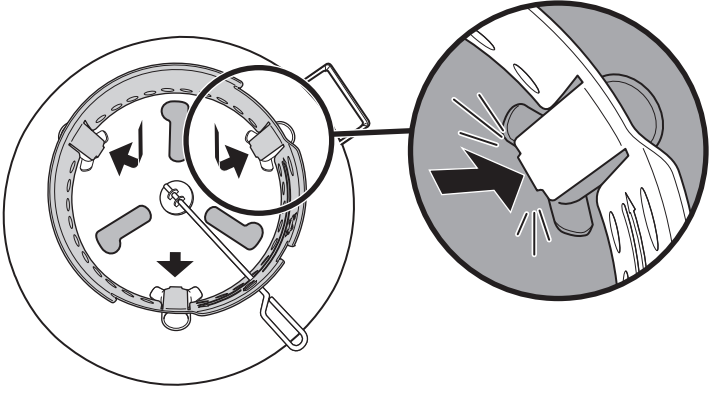
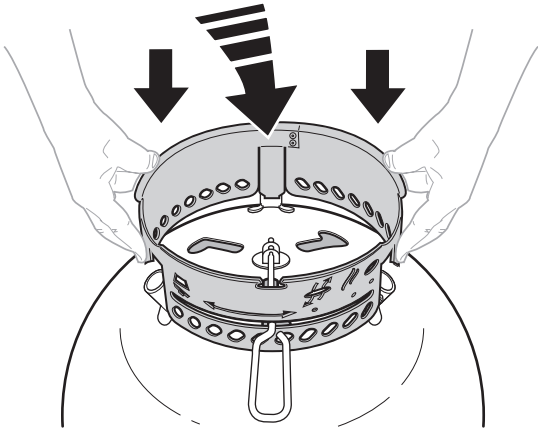
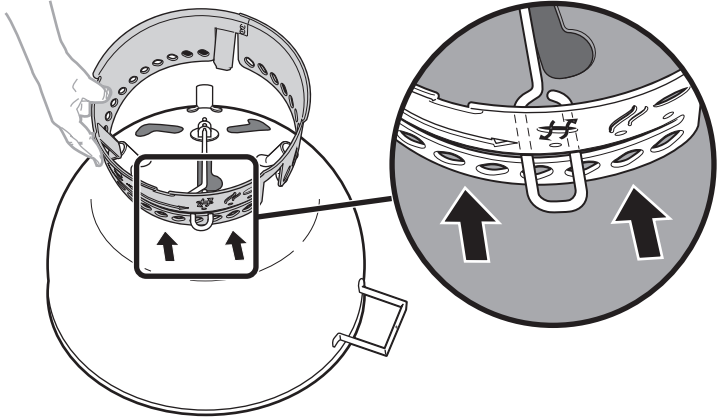
2



US Download the free BILT app for 3D step-by-step instructions.

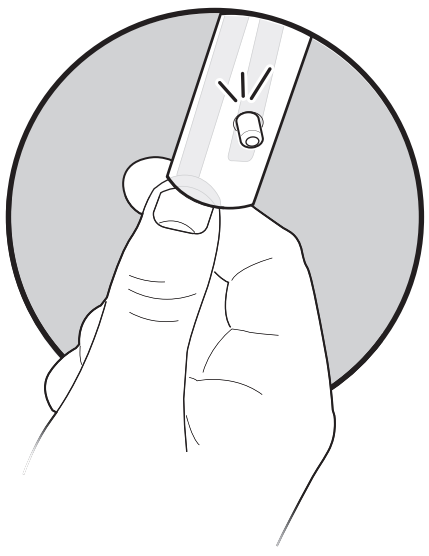
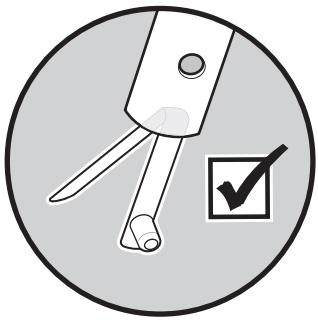
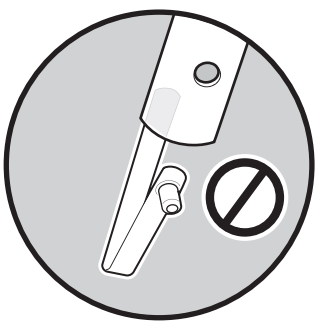
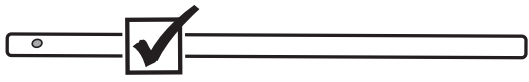
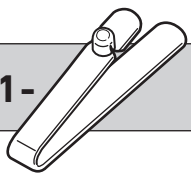
esMX Descargue gratis la app BILT para recibir instrucciones paso a paso en 3D.

frCA Téléchargez l'appli gratuite BILT qui vous expliquera le montage étape par étape en 3D.

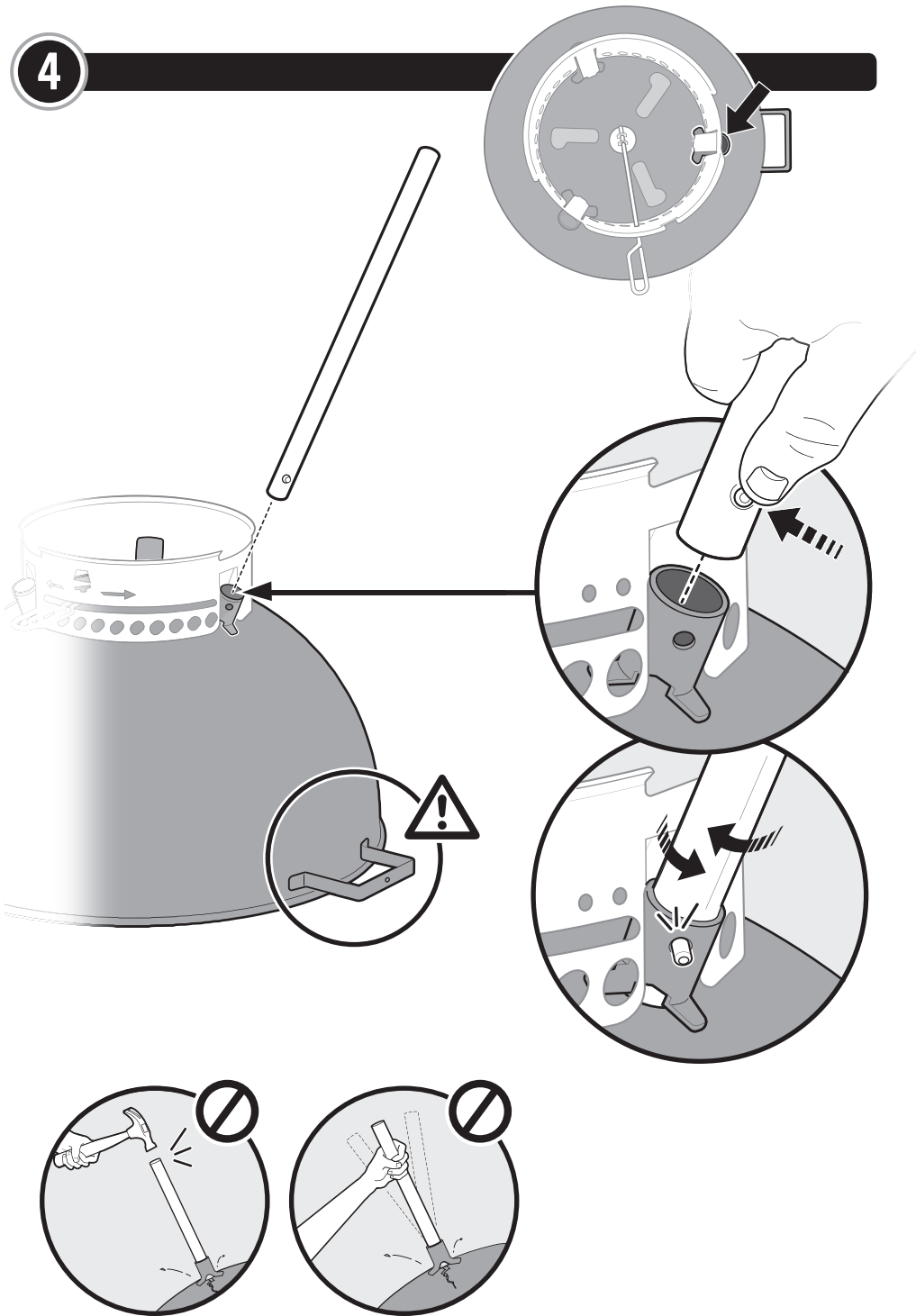


3

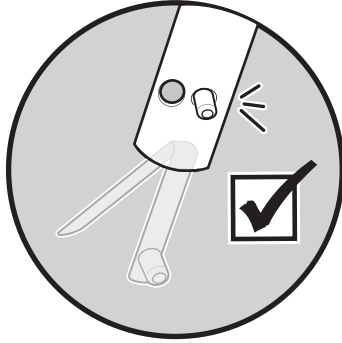
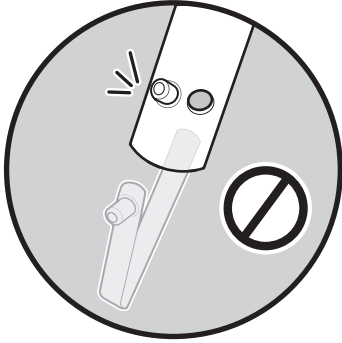
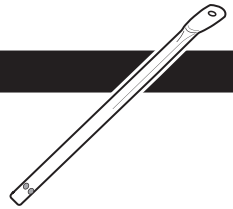
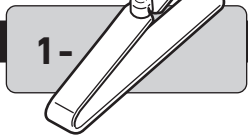
1-



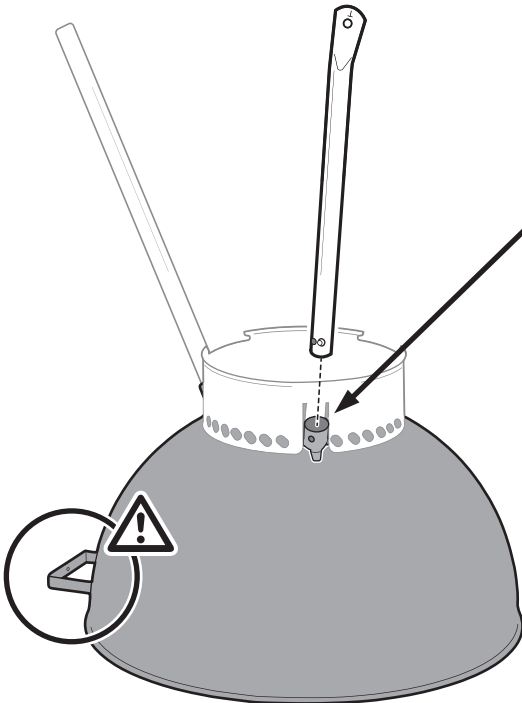
4



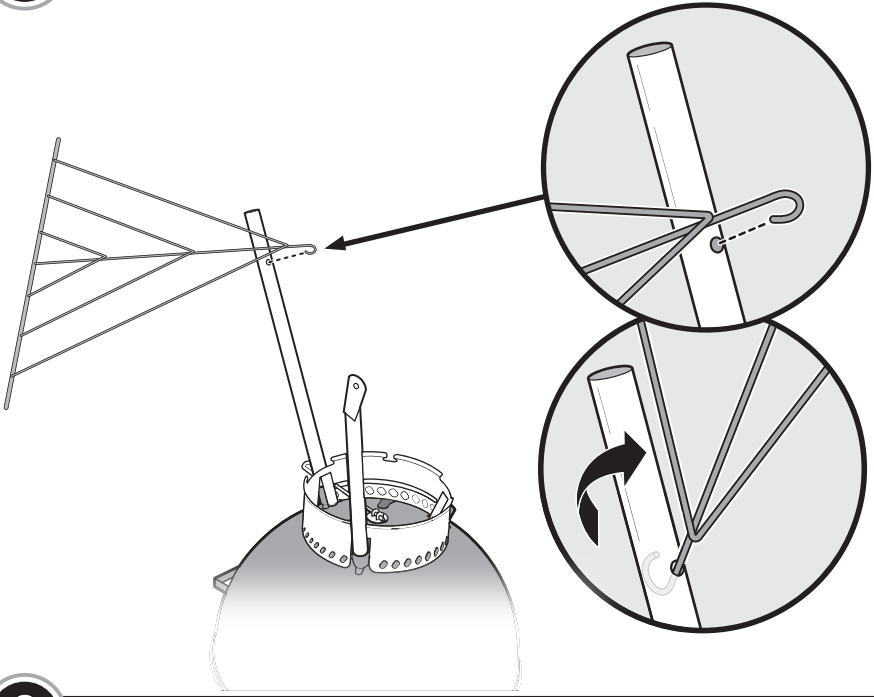
5



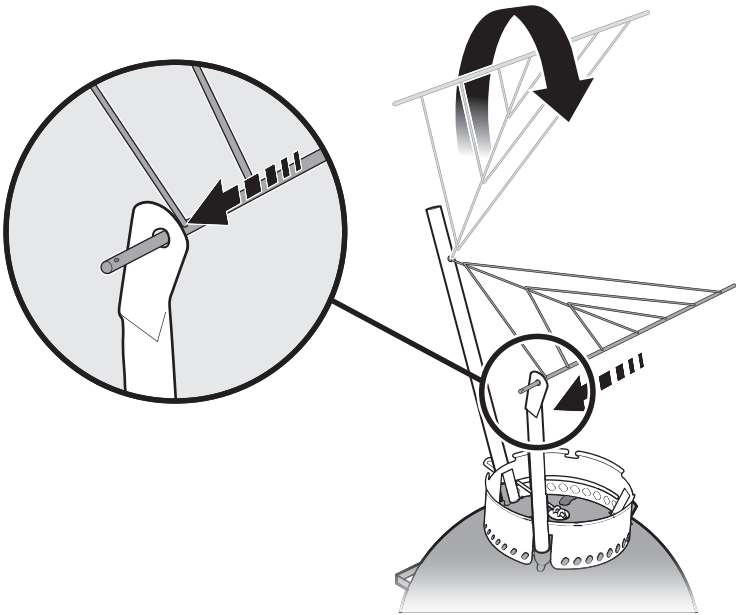
6



7

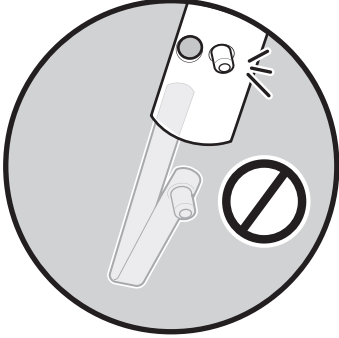
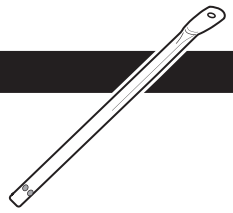
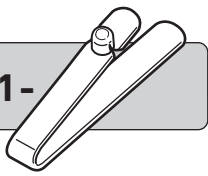


8

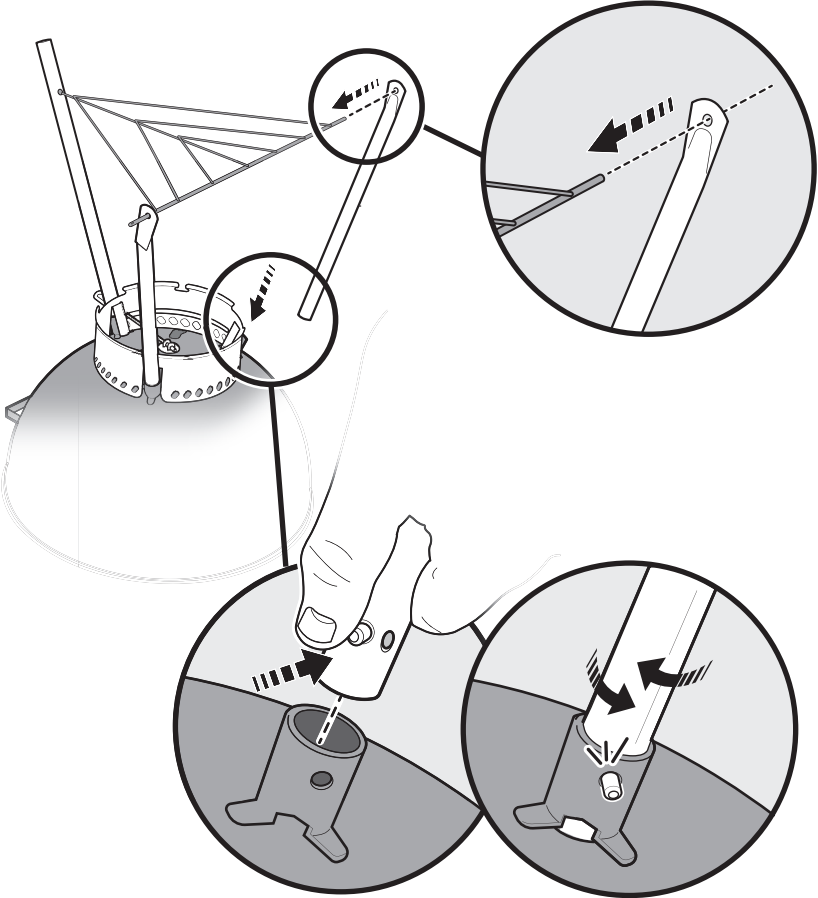


9

1-

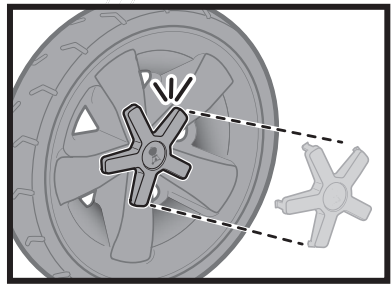
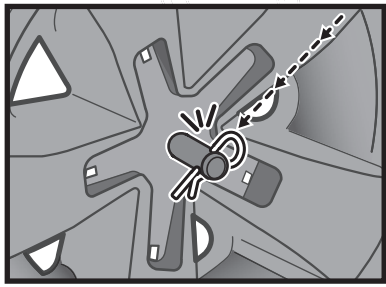
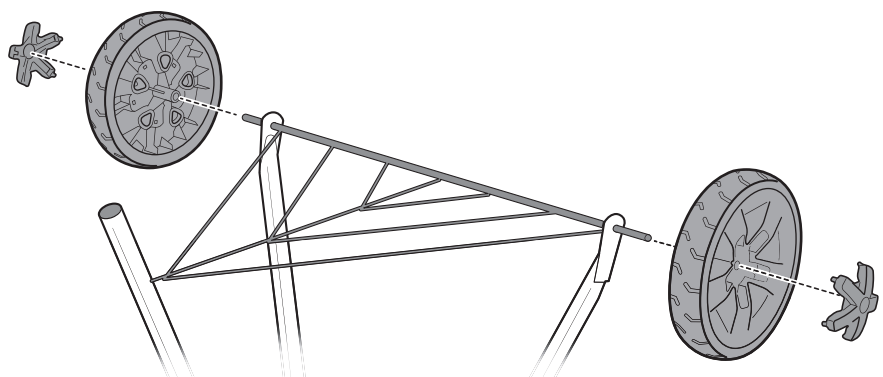


10



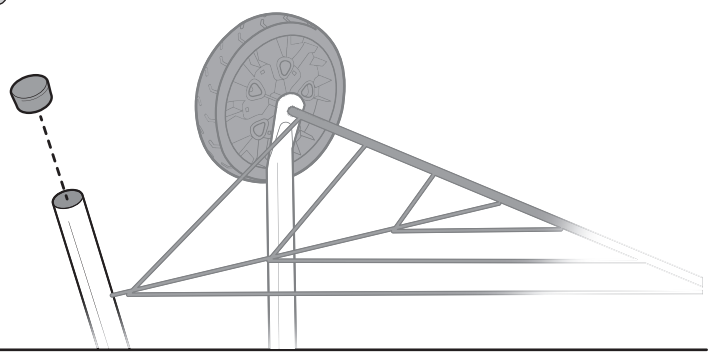
11

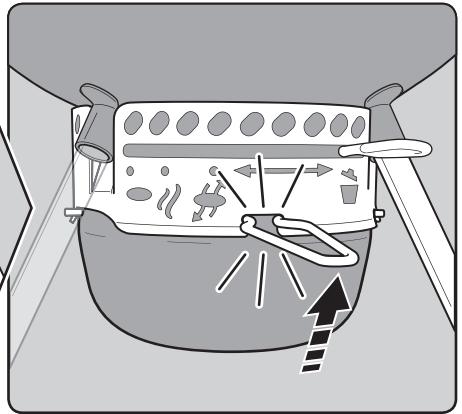
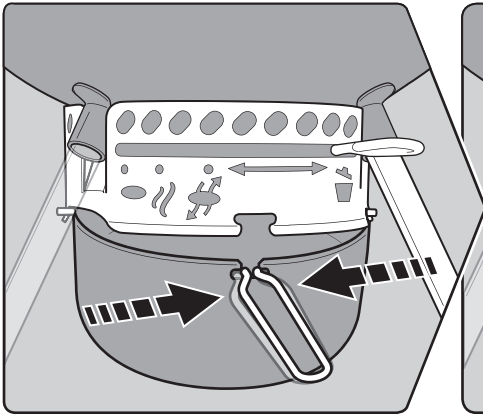
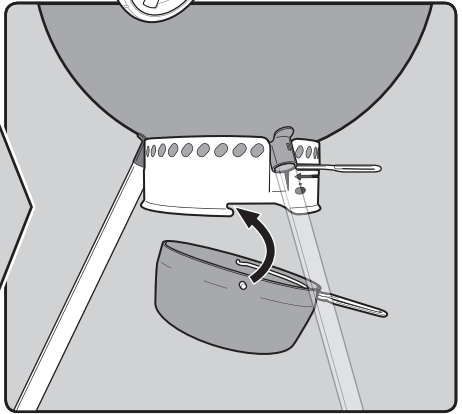
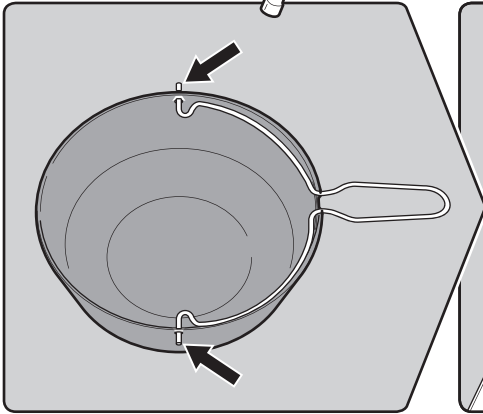
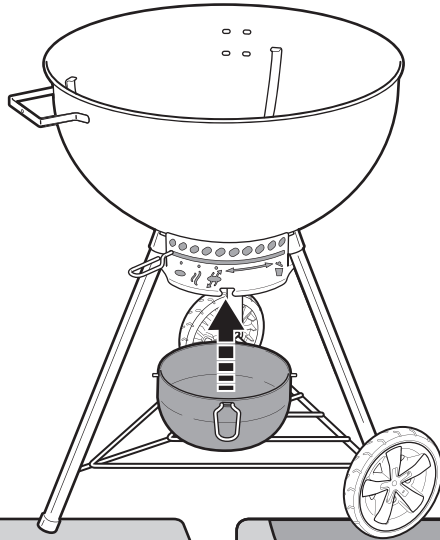
2-  2- 



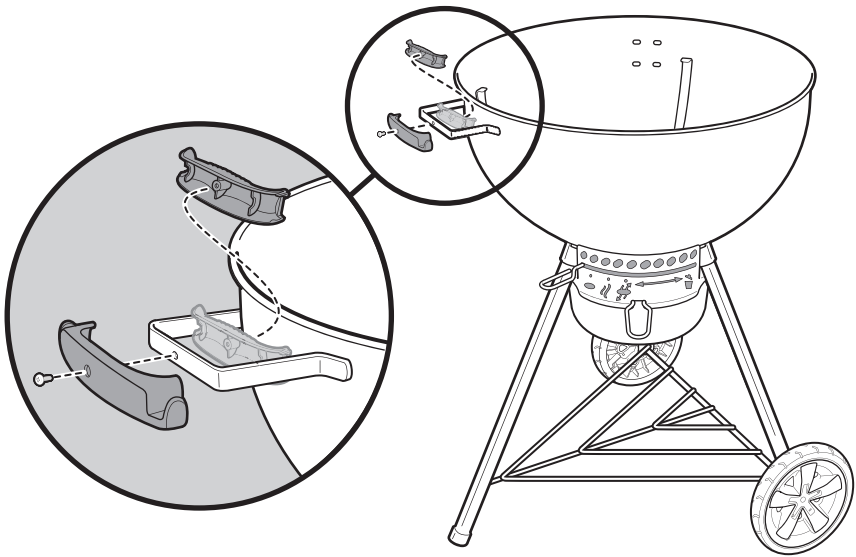
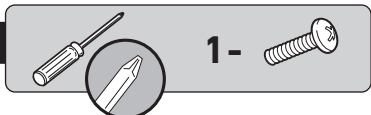
12

1- 

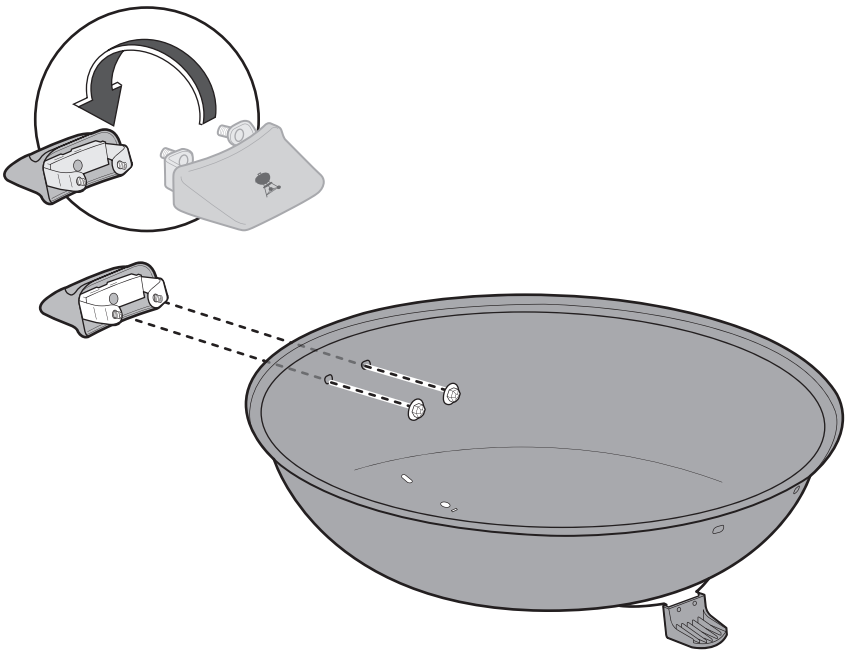
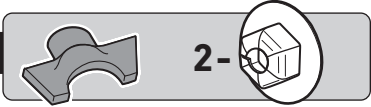


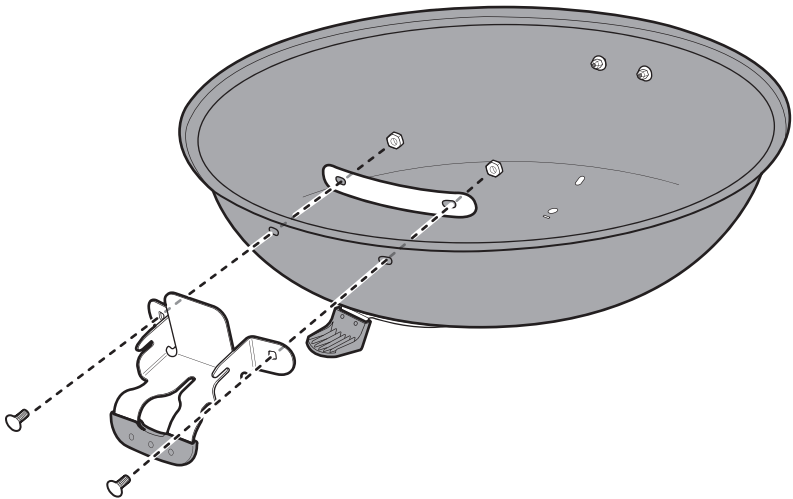
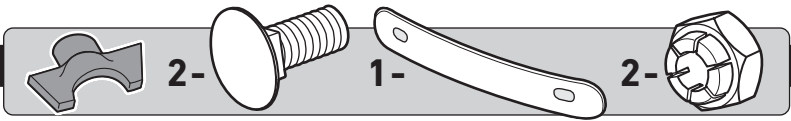
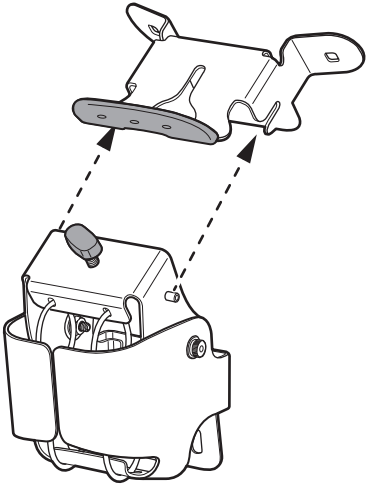
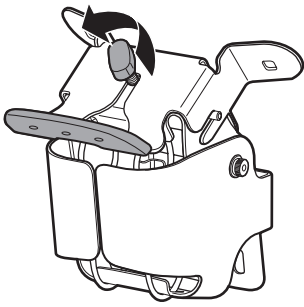


14

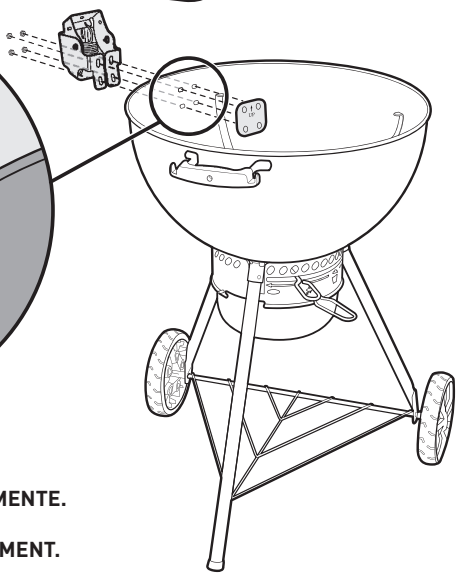
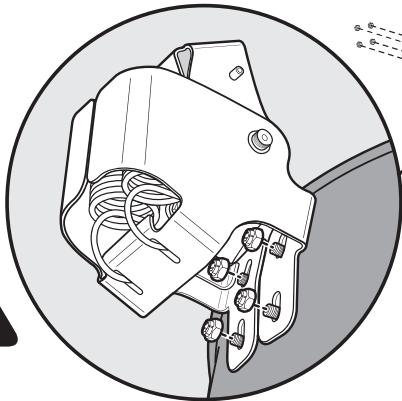
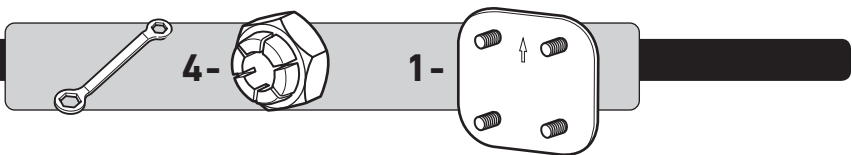


15





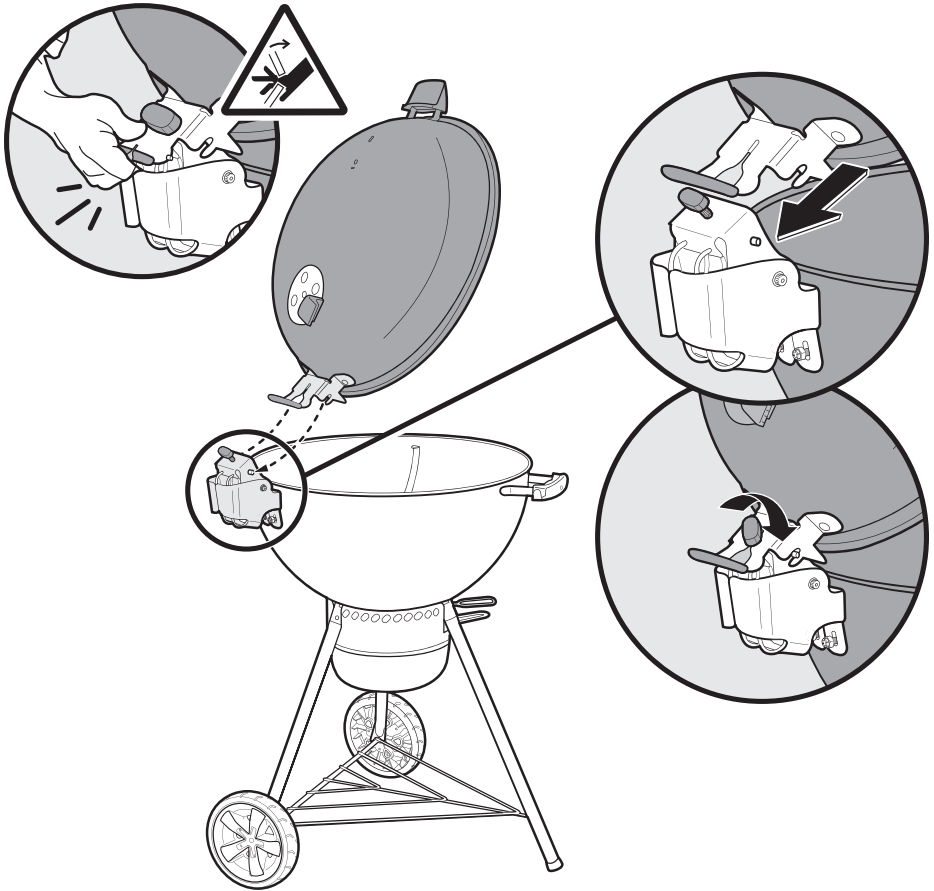
18



US ⚠ DO NOT FULLY TIGHTEN.

esMX ⚠ NO APRETAR COMPLETAMENTE.

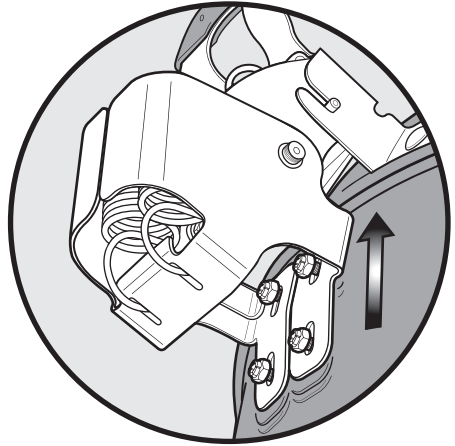
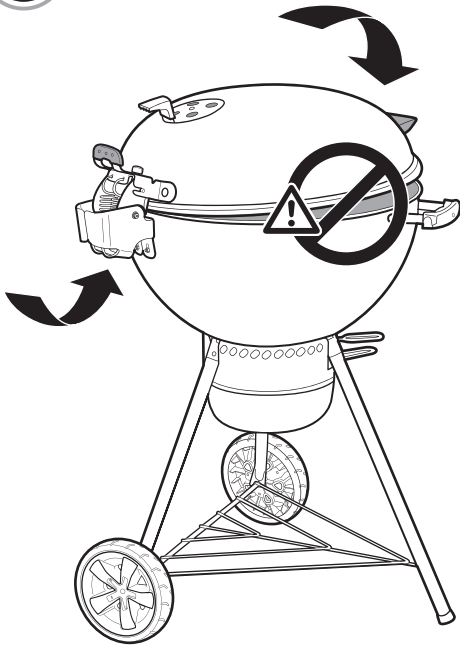
frCA ⚠ NE SERREZ PAS ENTIÈREMENT.



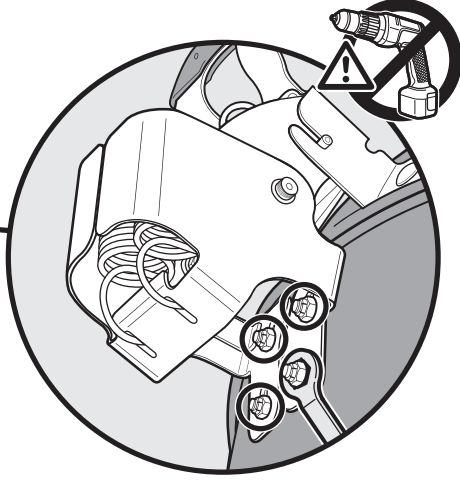
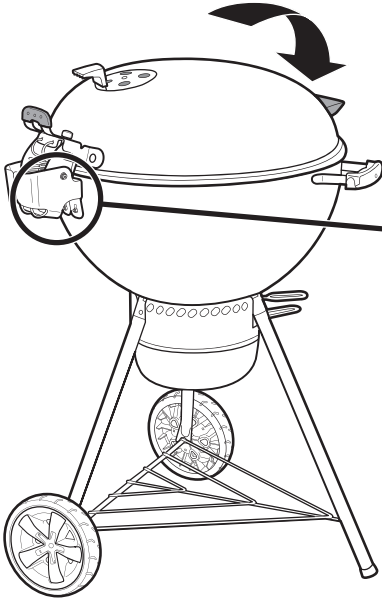
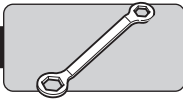
US ⚠️ FULLY TIGHTEN THE KNOB.

esMX ⚠️ APRIETE COMPLETAMENTE LA PERILLA.

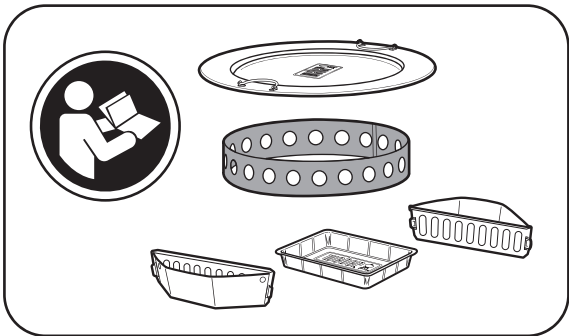
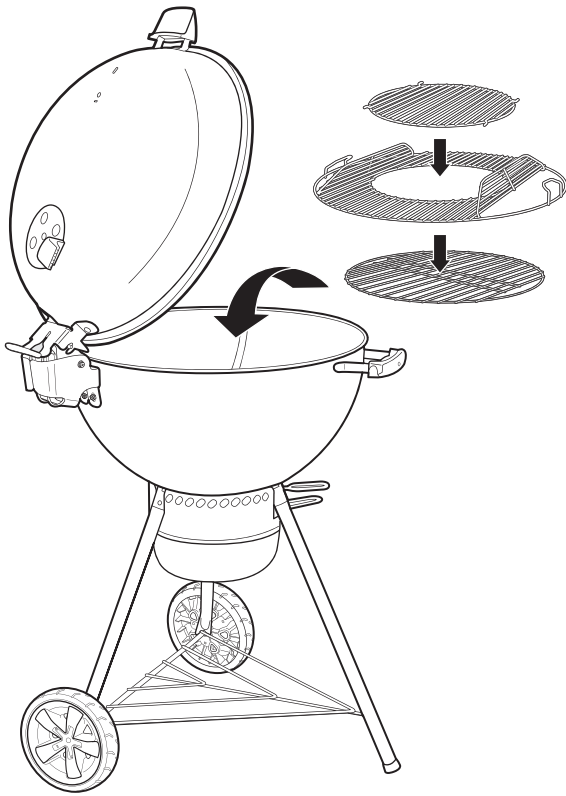
frCA ⚠️ SERREZ SOLIDEMENT LE BOUTON.

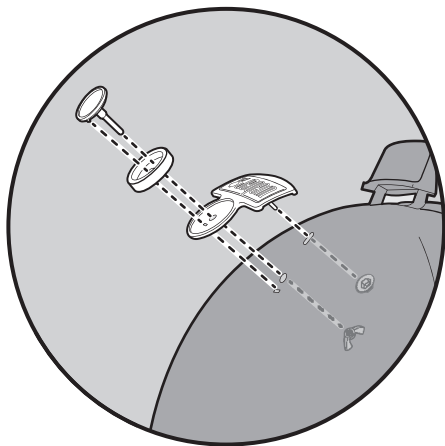
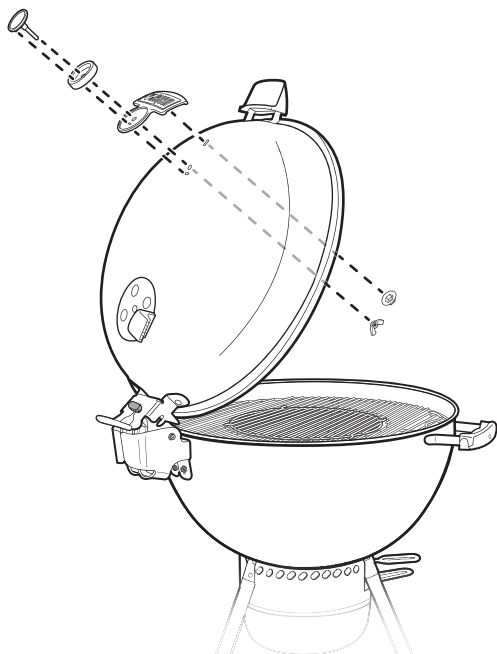
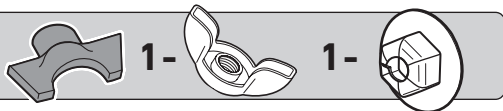


- US** ⚠ BE SURE THAT THE LID IS FLAT ON THE BOWL. KEEP LID CLOSED AND ADJUST LOWER HINGE IF NECESSARY BEFORE TIGHTENING HARDWARE.
- ES/ES** ⚠ ASEGÚRESE DE QUE LA TAPA ESTÉ BIEN APOYADA SOBRE EL CUERPO. MANTENGA LA TAPA CERRADA Y AJUSTE LA BISAGRA INFERIOR SI ES NECESARIO ANTES DE APRETAR LAS PIEZAS.
- fr/CA** ⚠ VÉRIFIEZ QUE LE COUVERCLE EST BIEN À PLAT SUR LA CUVE. GARDEZ LE COUVERCLE FERMÉ ET AJUSTEZ LA CHARNIÈRE INFÉRIEURE SI NÉCESSAIRE AVANT DE SERRER LES FIXATIONS.



- US** Tighten hardware until it is secure.
 ⚠ **DO NOT OVERTIGHTEN HARDWARE.**
 For videos and guidance with assembly of the hinge, check our FAQs on weber.com.
- ES** Apriete las piezas hasta que queden firmemente sujetas.
 ⚠ **NO APRIETE DEMASIADO LAS PIEZAS.**
 Consulte nuestras preguntas frecuentes en weber.com, donde encontrará videos y orientación sobre el armado de la bisagra.
- FR** Serrez solidement jusqu'à ce que les fixations soient bien stables.
 ⚠ **NE SERREZ PAS LES FIXATIONS ENTIÈREMENT.**
 Consultez les vidéos et les instructions sur l'assemblage de la charnière dans notre foire aux questions sur weber.com.

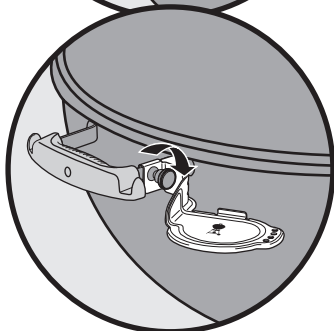
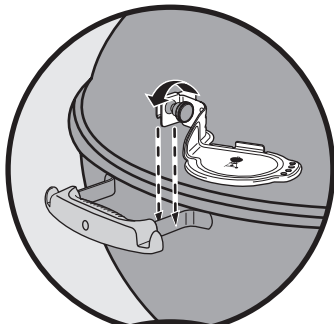


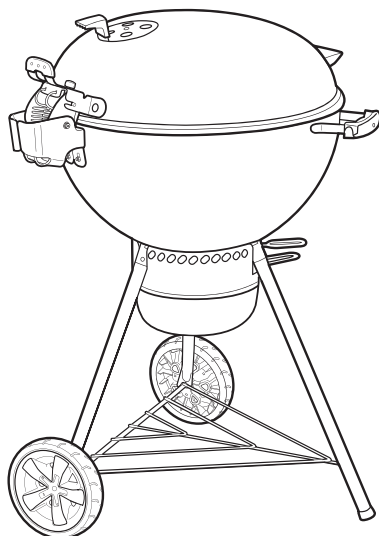
23**24**

US FOR USE WITH iGRILL MINI, iGRILL 2, and WEBER CONNECT.

ES/FR COMPATIBLE CON iGRILL MINI, iGRILL 2 Y WEBER CONNECT.

FR/CA POUR UNE UTILISATION AVEC IGRILL MINI, IGRILL 2 ET WEBER CONNECT.





- US** Make sure that all parts are assembled and hardware is fully tightened before operating the grill.
- ES/PT** Asegúrese que todas las partes estén bien montadas y que apretó totalmente todos los herrajes antes de poner en funcionamiento el asador.
- FR/CA** Veuillez à ce que toutes les pièces soient montées et que la visserie est bien serrée avant d'utiliser le barbecue.



WEBER-STEPHEN PRODUCTS LLC
www.weber.com