



The imani i2Plus Breast pump is an in-bra breast pump and hands-free cup that expresses and collects breast milk with adjustable suction for an individualized fit and optimal performance.

CONTENTS

1. Safety information
2. Important Symbols
3. Indications for use
4. Parts and assembly
5. Pump controls
6. Pumping Guide

01



Manufacturer

imani Co.
147, Hwasan-ro, Idong-eup, Cheoin-gu, Yongin-si,
Gyeonggi-do, Republic of Korea

Legendairy Milk, LLC
1007 S. Heatherwilde Blvd., Suite 100
Pflugerville, Texas 78660

IM-IFU-i2Plus(US)
Rev 0.
2023.04

imani

You can download the user manual on our website
www.legendairymilk.com.

Quick manual

Caution ! Follow correct sterilization method



Prior to first use, please sterilize all parts except the main pump body in boiling water. Once the water reaches boiling point, turn off the heat and then submerge accessories in boiling water. Remove accessories after 3-5 minutes.



boiling water

Use a pot large enough to fit all parts without touching the sides. If the pot is too small, the parts may become damaged or warp. Once the water reaches boiling point, turn off the heat and then submerge parts in boiling water. Stir occasionally to avoid allowing imani parts to touch each other or the sides of the pot for an extended period of time. Remove parts after 3-5 minutes.



Do not boil any parts for more than 5 minutes, as extended exposure to heat may damage them.



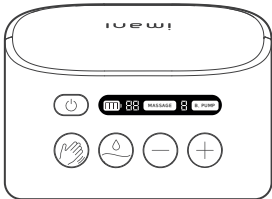
Not suitable for microwave or steam sterilization methods. Be aware that some steam and microwave sterilizers reach high temperatures which may risk warping plastic parts.

● imani i2 Plus only

Turn the cap clockwise a lot when charging.



Please close the cap when using.



This Product turns off after 20 minutes automatically.

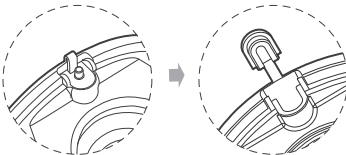
You can change the time for automatic turn off.

1. Press the power button.
2. Press +, - buttons about 5 seconds at the same time.
Change the time with +, - buttons
(Change the time from 10 to 40 minutes with 5 minutes at a time)
3. Press the power button to save.

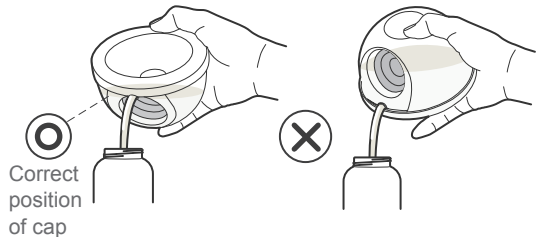
※How to pour milk into a bottle

Pouring milk without removing the Main Body first, creates a risk of backflow.

Place the Cup on a flat, firm surface and open the cap carefully to prevent breast milk in the cup from spilling. Use your thumb to squeeze the Breast Shield and slowly angle the Cup to gently pour the milk in the bottle.



※ Open the cap.



Parts to be cleaned and disinfected



Valve



Protector



Connector



Insert



Funnel



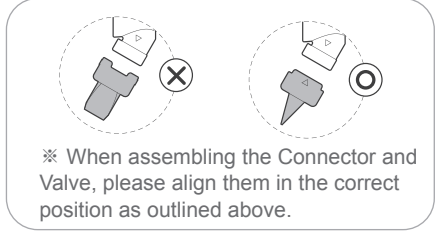
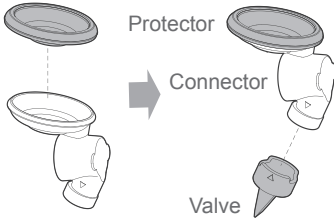
Collection Cup



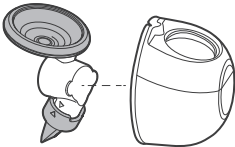
Cap

※ The 'cap' part is not included in the breast pumps component.

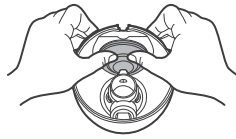
● How to assemble the Hands-free Cup Set : ① Assemble the Connector



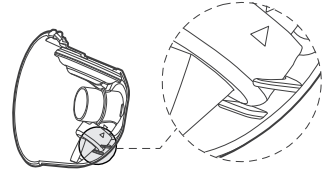
● How to assemble the Hands-free Cup Set : ② Assemble the Cup



① Insert the connector into the cup.

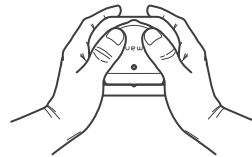
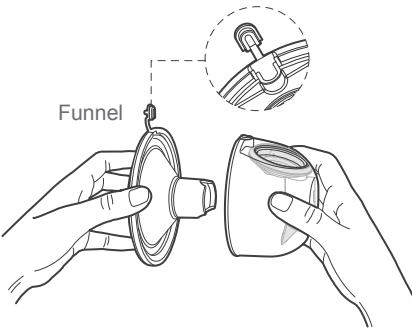


② When attaching the protector to the cup, please press firmly.



Make sure the valve is aligned in the correct position in the cup as shown above.

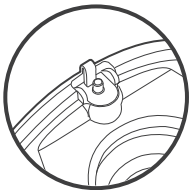
● How to assemble the Hands-free Cup Set : ③ Assemble the Funnel



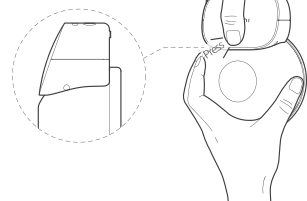
When using with another pump by connecting the hose



Cap

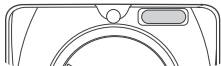
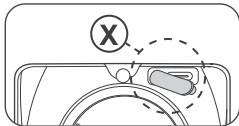
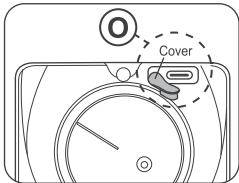


After assembling the hands-free cup, please close the cap.



When using with as a hands-free pump

Caution: When fitting into iBox or Charging dock, turn the cover as close as possible to the circle with clockwise.



Caution: Make sure to close the cover completely when you use i2Plus as wearable pumps.