



-INSTALLATION- INSTRUCTIONS



LP ADVENTURE LIFT KIT



SUBARU ASCENT 2018+

CONGRATULATIONS FOR YOUR NEW LP AVENTURE LIFT KIT!

If you have any question or need assistance during the installation please contact our team. You can find the information on the last page.



IN
THE
BOX

IN THE BAGS

1



2



3



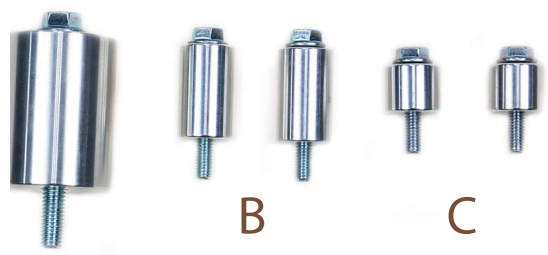
4



5



6



7





NECESSARY TOOLS

- We recommend the use of a lift
- Jack stand to support the subframe
- Ratchet
- 12" Ratchet extension
- 10mm Socket
- 12mm Socket
- 14mm Socket
- 17mm Socket
- 19mm Socket
- 22mm Socket
- key 10mm
- Key 12mm
- Key 14mm
- Key 17mm
- Long nose pliers
- Torque wrench
- Flat head Screw driver
- Plastic trim removal tool

1

REMOVE THESE TWO SUBFRAME BOLTS



REPLACE THEM WITH THE BOLTS PROVIDED (BAG #1)



2

UNBOLT THE BOLT OF THE ENDLINK (TOP ONLY)



3

RELEASE THE ABS SENSOR FROM HIS CLIP



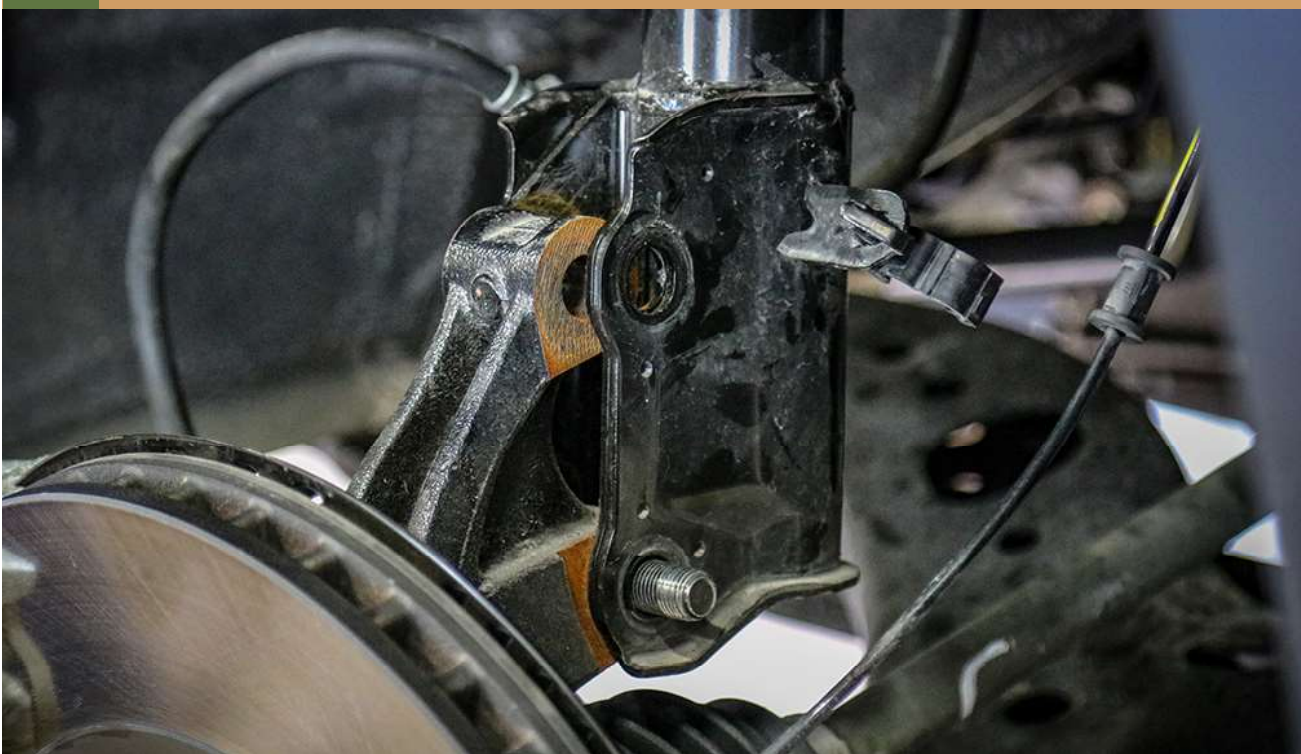
4

UNSCREW THE BRAKE LINE BRACKET



5

UNSCREW THE BOLTS OF THE BOTTOM OF THE SUSPENSION



6

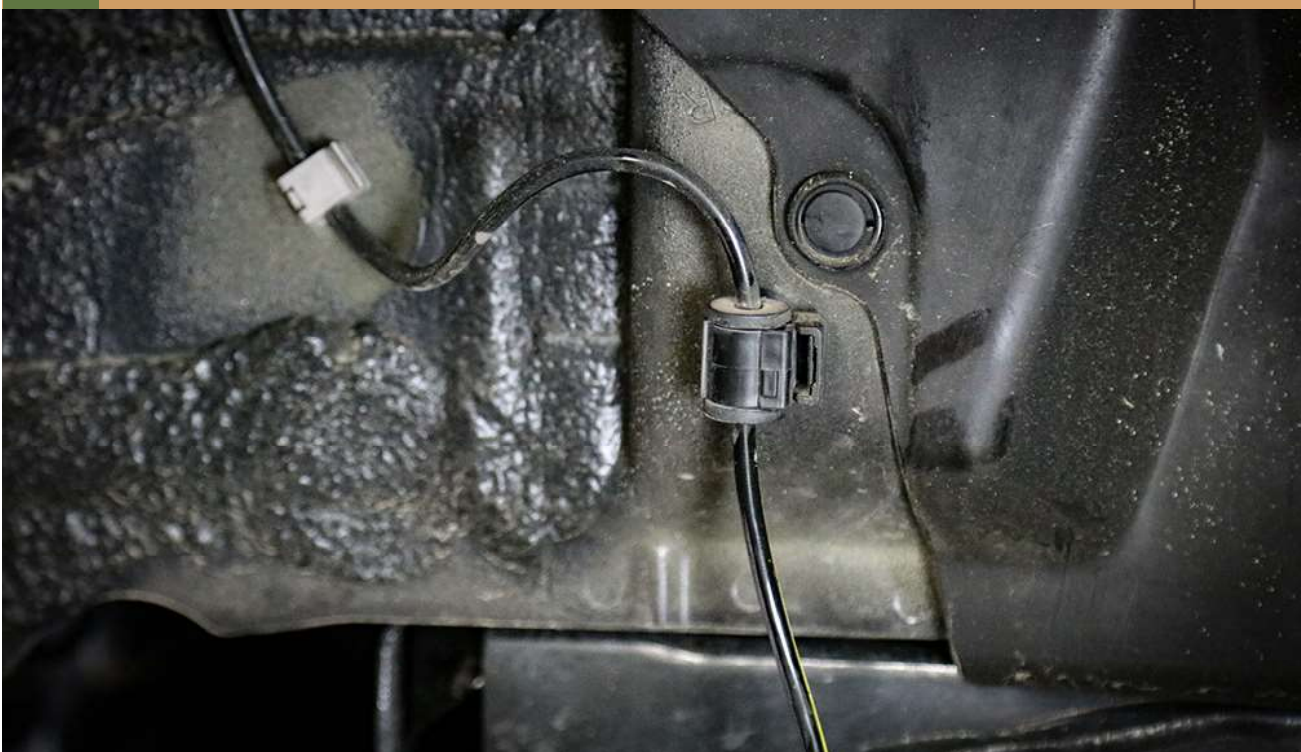
RELEASE AND TURN THE WIRE 180 DEGREES

A



LIKE THIS

B



7

UNBOLT THE TOP OF THE SUSPENSION



8

INSTALL THE TOP PLATES SPACERS



9

REINSTALL THE FRONT SUSPENSION - TOP



FR

PASSENGER SIDE - NORTH AMERICA



FL

DRIVER SIDE - NORTH AMERICA



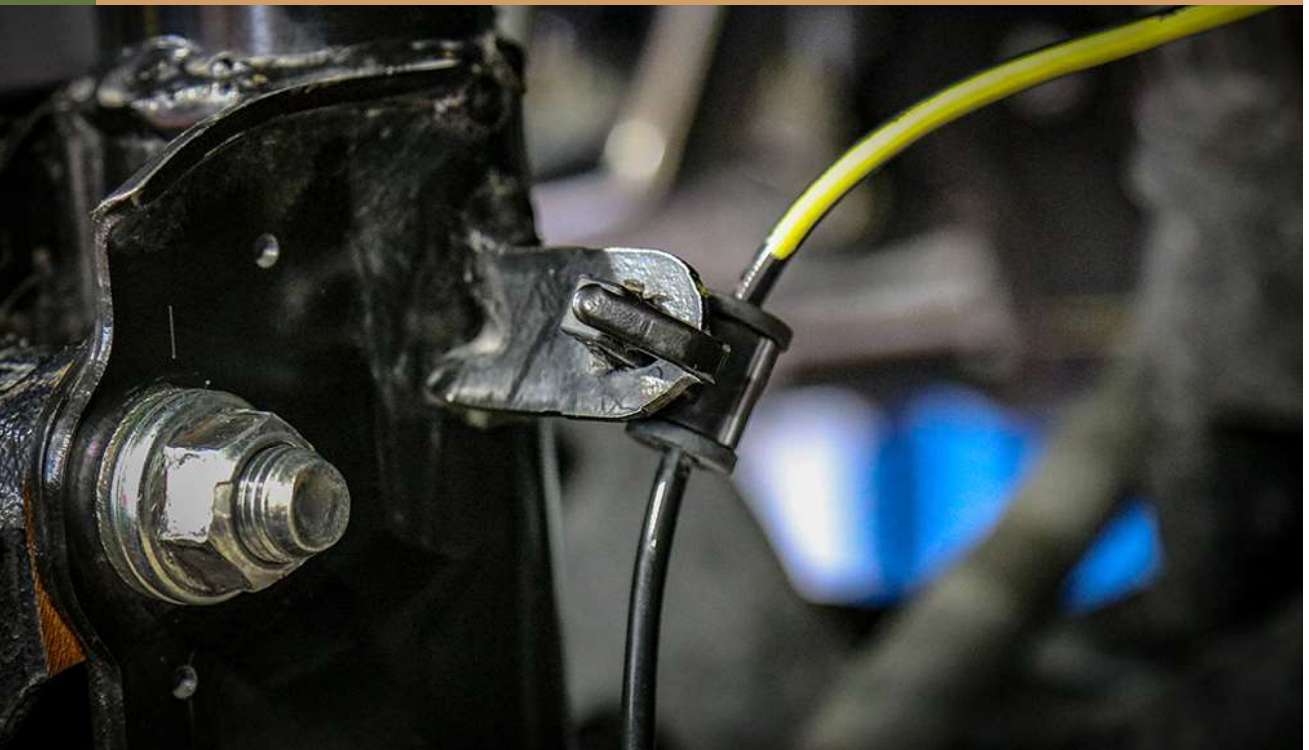
10

REINSTALL THE FRONT SUSPENSION - BOTTOM



11

REINSTALL THE ABS SENSOR



12

REINSTALL THE BRAKE LINE



13

INSTALL THE ENDLINK BRACKETS (BAG #2)



OTHER VIEW



14

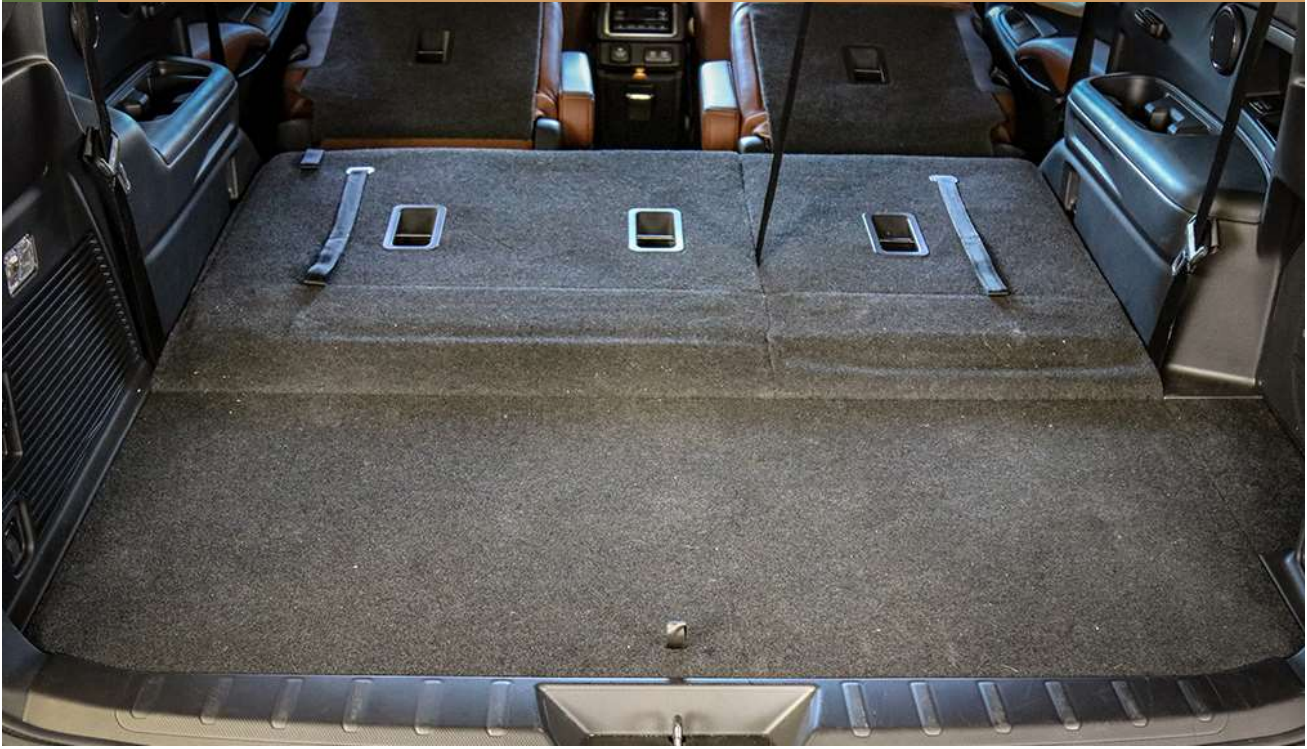
INSTALLATION OF THE FRONT SUSPENSION COMPLETED



15

REAR SECTION

A



REMOVE THE TRUNK FLOOR

B



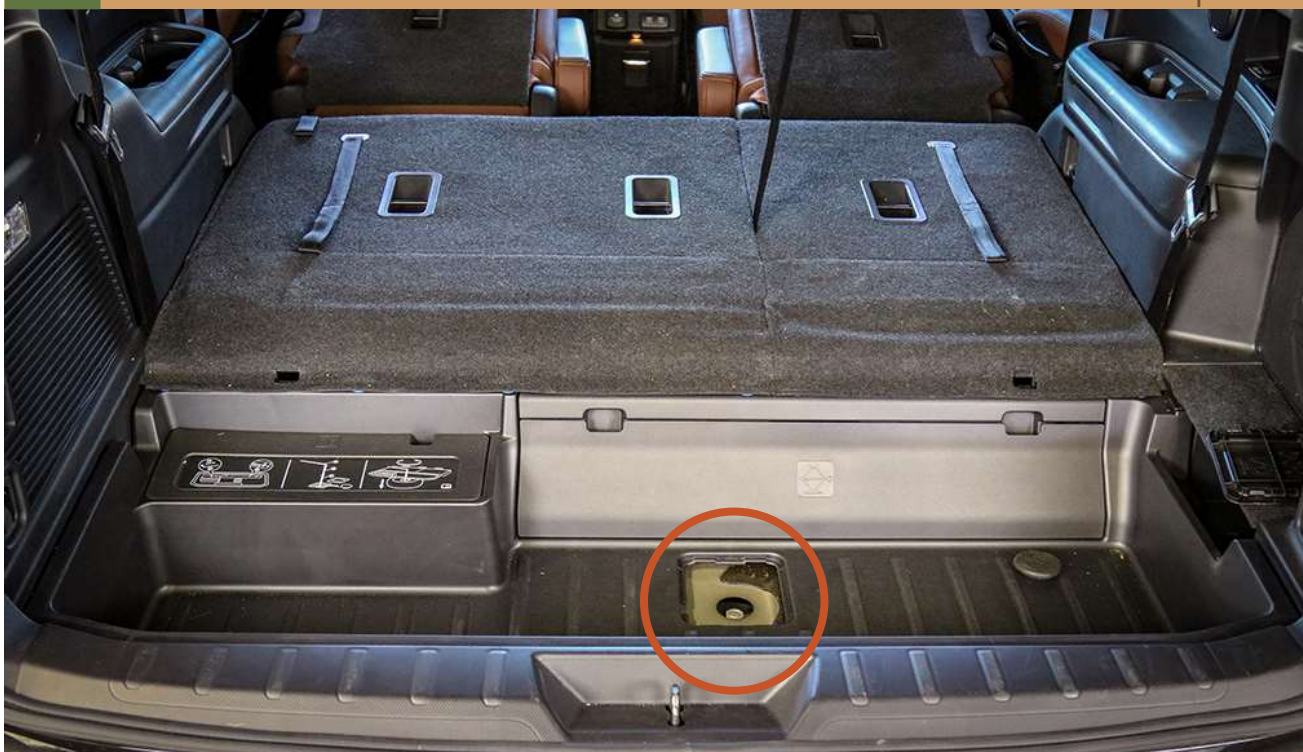
REMOVE THE LUGGAGE COVER

C



REMOVE THE COVER TO ACCESS THE BOLT TO LOWER THE TIRE

D



OTHER VIEW: REMOVE THIS COVER



HERE IS THE BOLT



YOU HAVE TO LOWER THE TIRE AND REMOVE IT

E



F



16

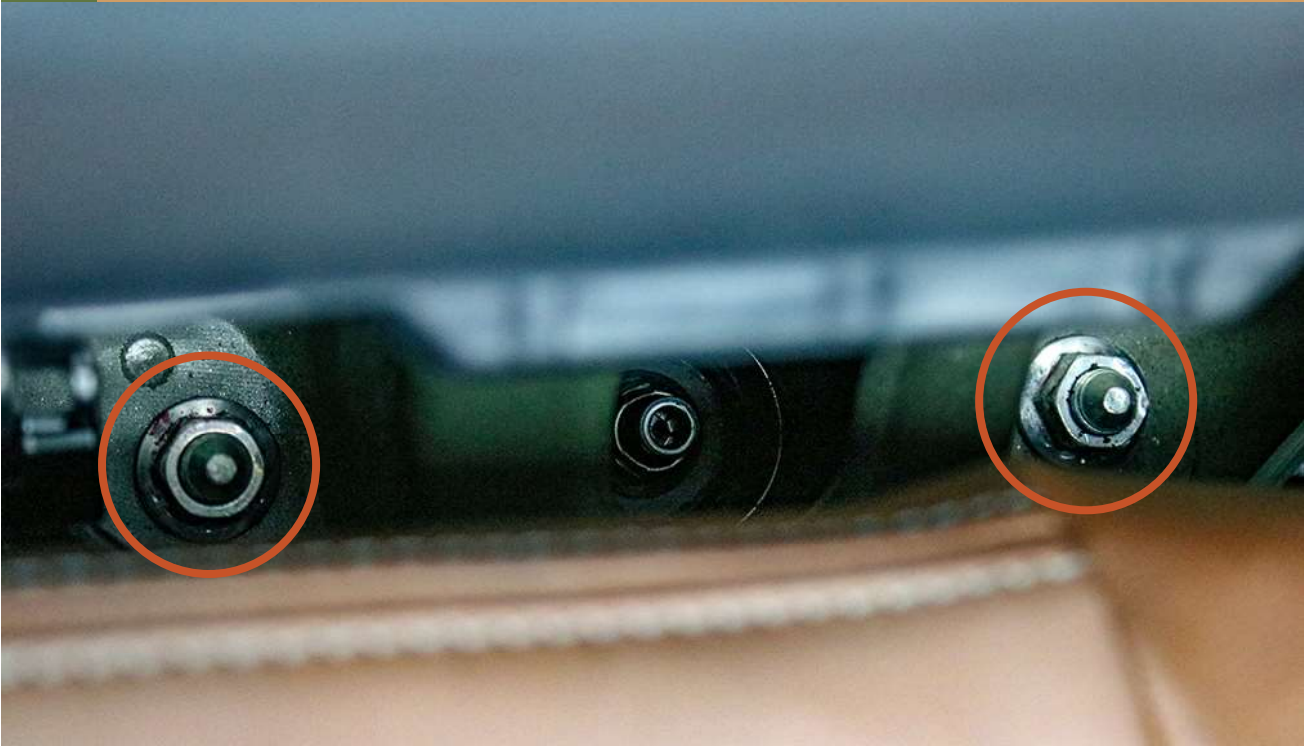
ACCESS TO THE BOLTS OF THE REAR SUSPENSION



ACCESS TO THE BOLTS OF THE REAR SUSPENSION



UNSCREW THESE TWO BOLTS



17

UNSCREW THE BRAKE LINE BRACKET



18

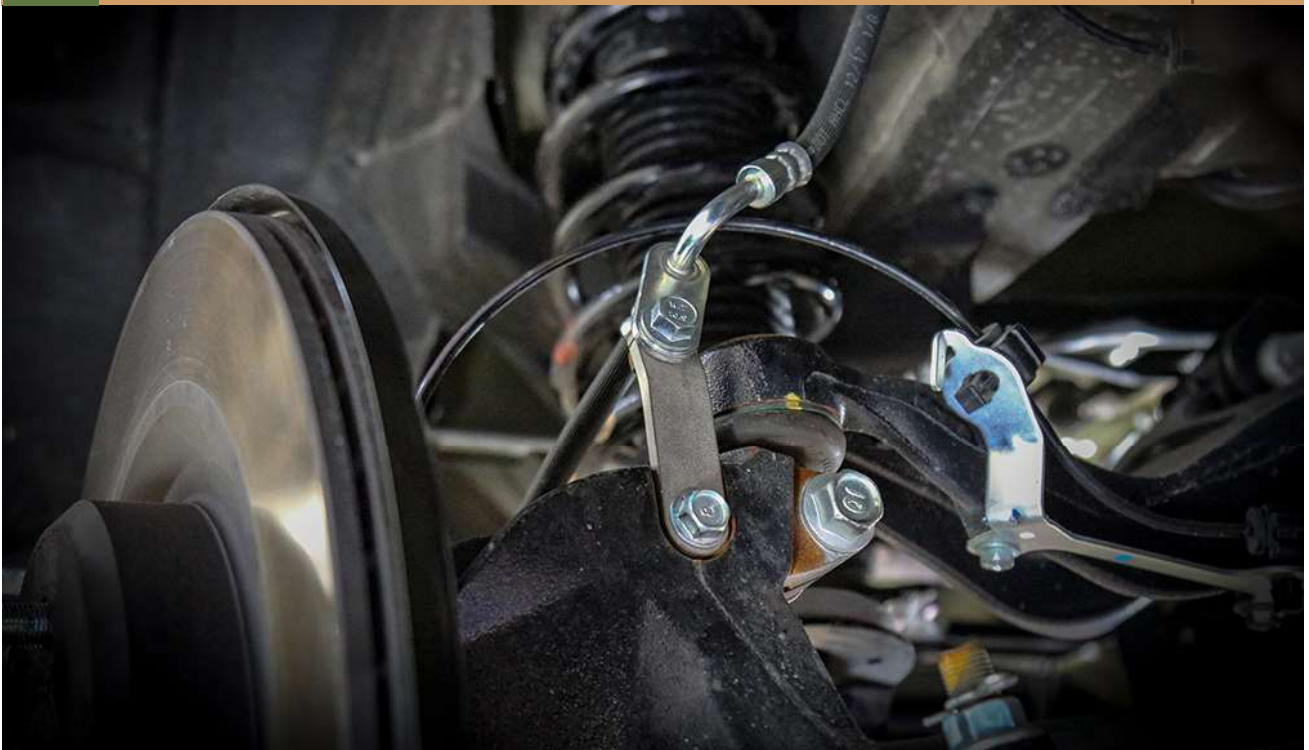
INSTALL THE BRAKE LINE EXTENSION - (BAG #5)

A



REINSTALL THE BRAKE LINE BRACKET

B



19

ONCE THE SPARE WHEEL IS REMOVED...



YOU MUST REMOVE THE METAL SHEET AROUND IT

A



UNSCREW THESE TWO BOLTS

B



UNSCREW THESE TWO BOLTS

C



HERE IS THE RESULT ONCE THE PANEL REMOVED



20

UNSCREW THE 4 BOLTS OF THE SUBFRAME BRACE



ENLARGED VIEW



ENLARGED VIEW



21

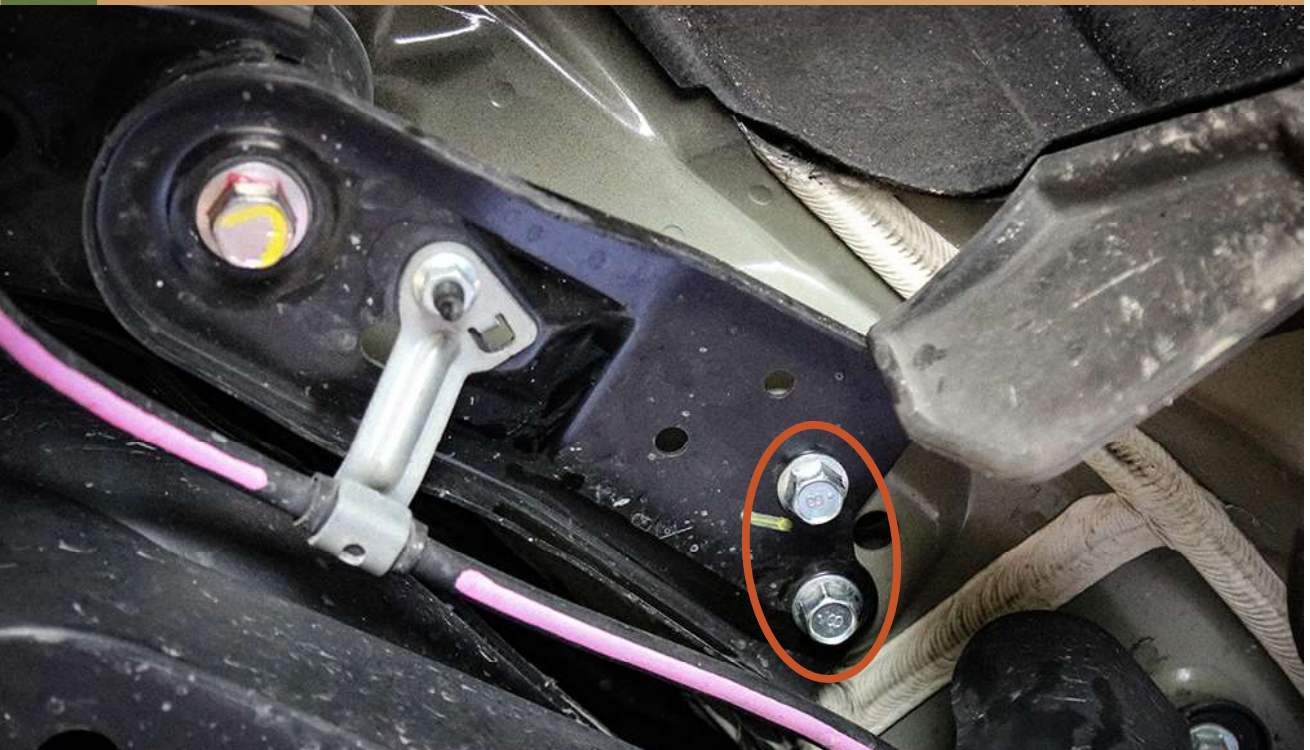
USE A JACK STAND FOR THE NEXT STEPS



22

UNSCREW THE SUBFRAME BRACKET

A



UNSCREW THE BIG BOLT AND REMOVE THE BRACKETS

B



23

TEMPORARILY INSTALL THE BOLTS - USE THOSE PROVIDED IN THE KIT



NOTE: Temporarily install the front bolts, keep the subframe properly aligned. This will help you for the next steps of the installation.

24

UNBOLT THE SUBFRAME BOLT - REAR RIGHT

A



UNBOLT THE SUBFRAME BOLT - REAR LEFT

B



NOTE: You have to lower the height of the jack stand for the next steps

25

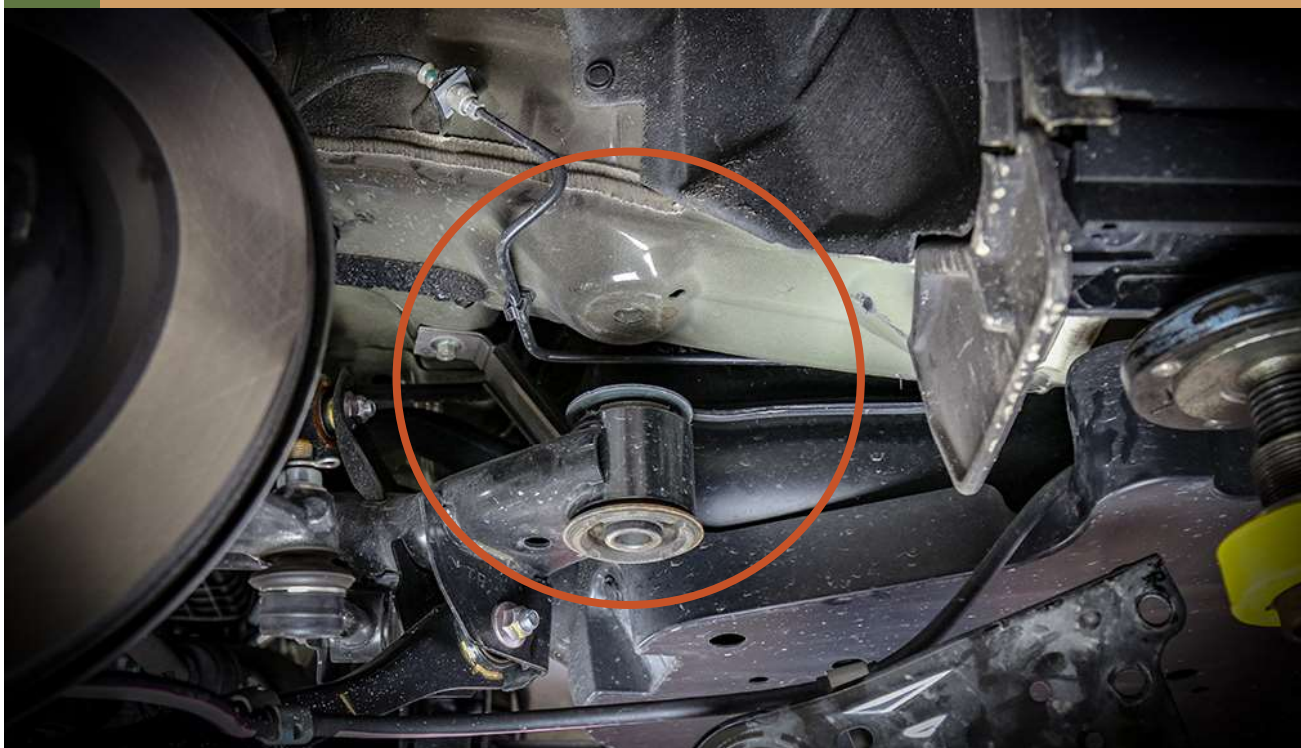
INSTALL THE SUBFRAME SPACERS - REAR - (BAG #3)



NOTE: Warning, for steps 25 and 29, you must not tighten the bolts completely ... for now.

26

YOU CAN NOW REMOVE THE FRONT BOLTS



27

INSTALL THE SUBFRAME SPACERS - FRONT (BAG#3)



28 INSTALL THE SUBFRAME BRACKETS WITH THE SPACERS (BAG #4A)



29 INSTALL THE SPACERS OF THE SUBFRAME BRACE (BAG #4B)

A



INSTALL THE SPACERS OF THE SUBFRAME BRACE (BAG #4B)

B



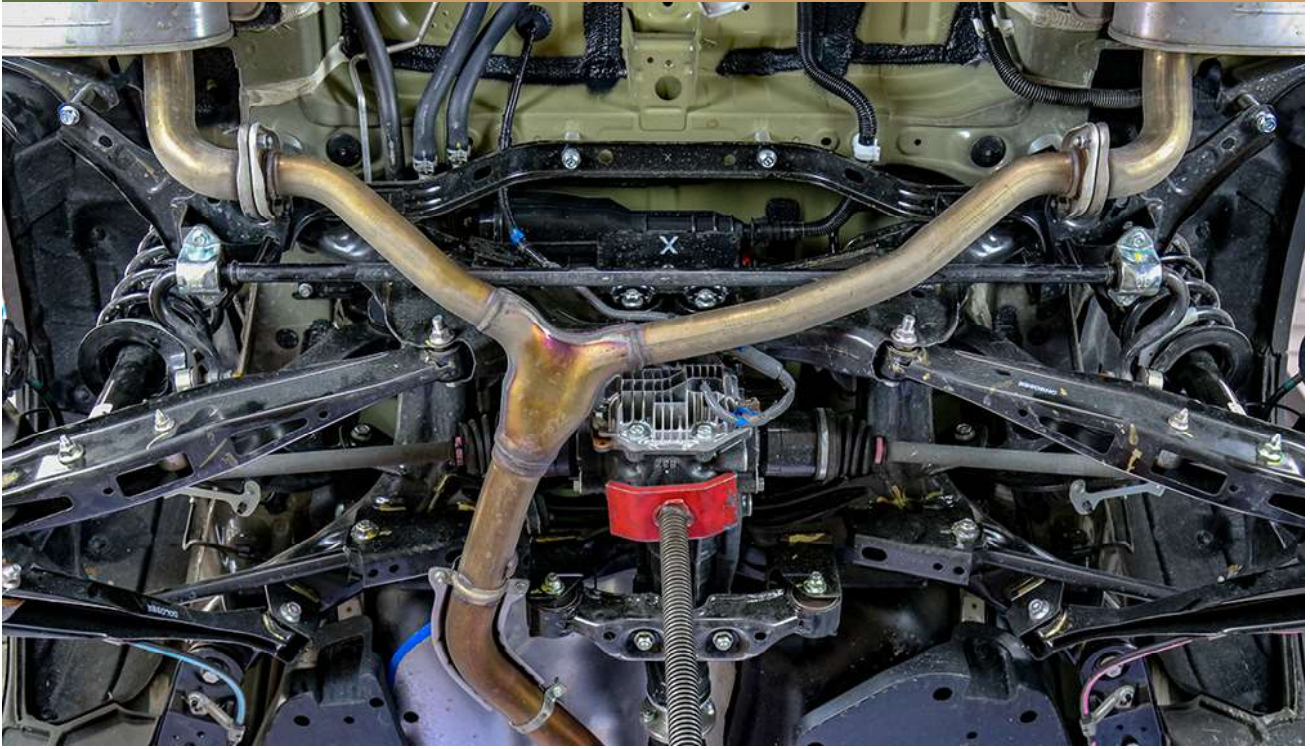
INSTALL THE SPACERS OF THE SUBFRAME BRACE (BAG #4B)

C



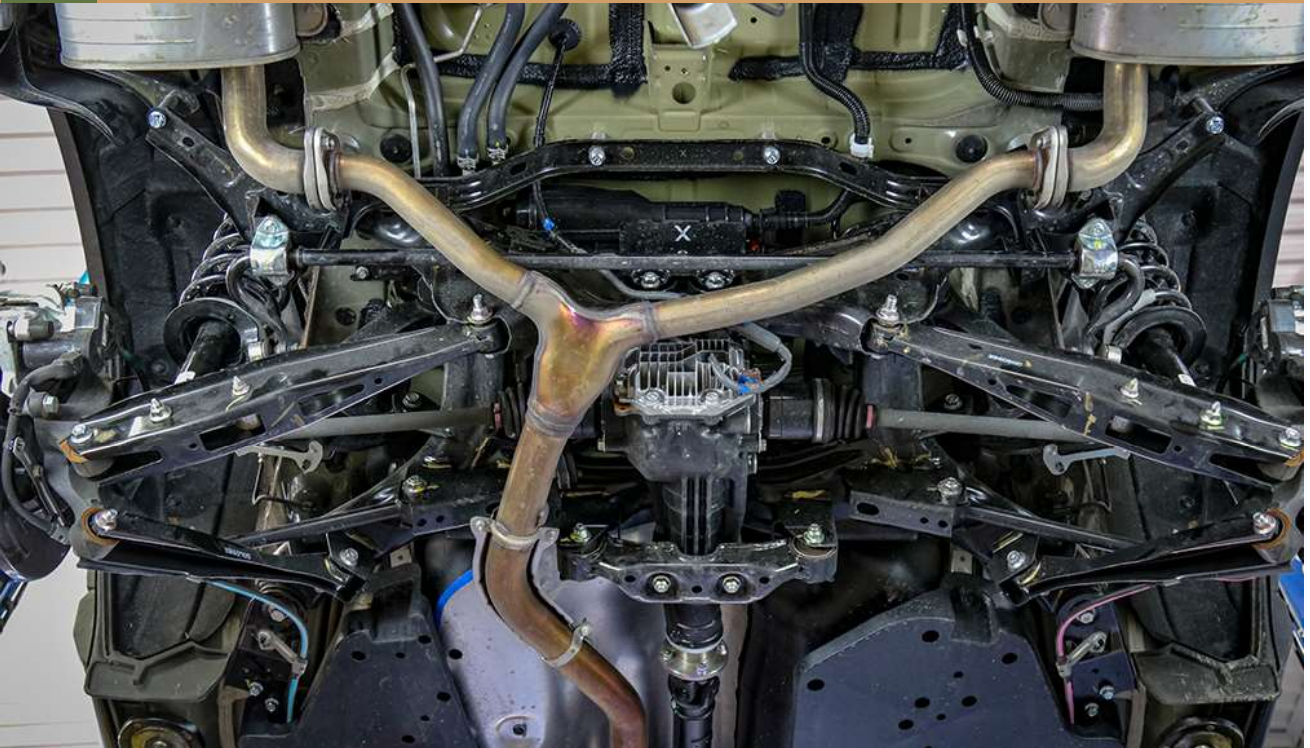
30

YOU CAN NOW TIGHTEN ALL THE BOLTS (12 BOLTS)



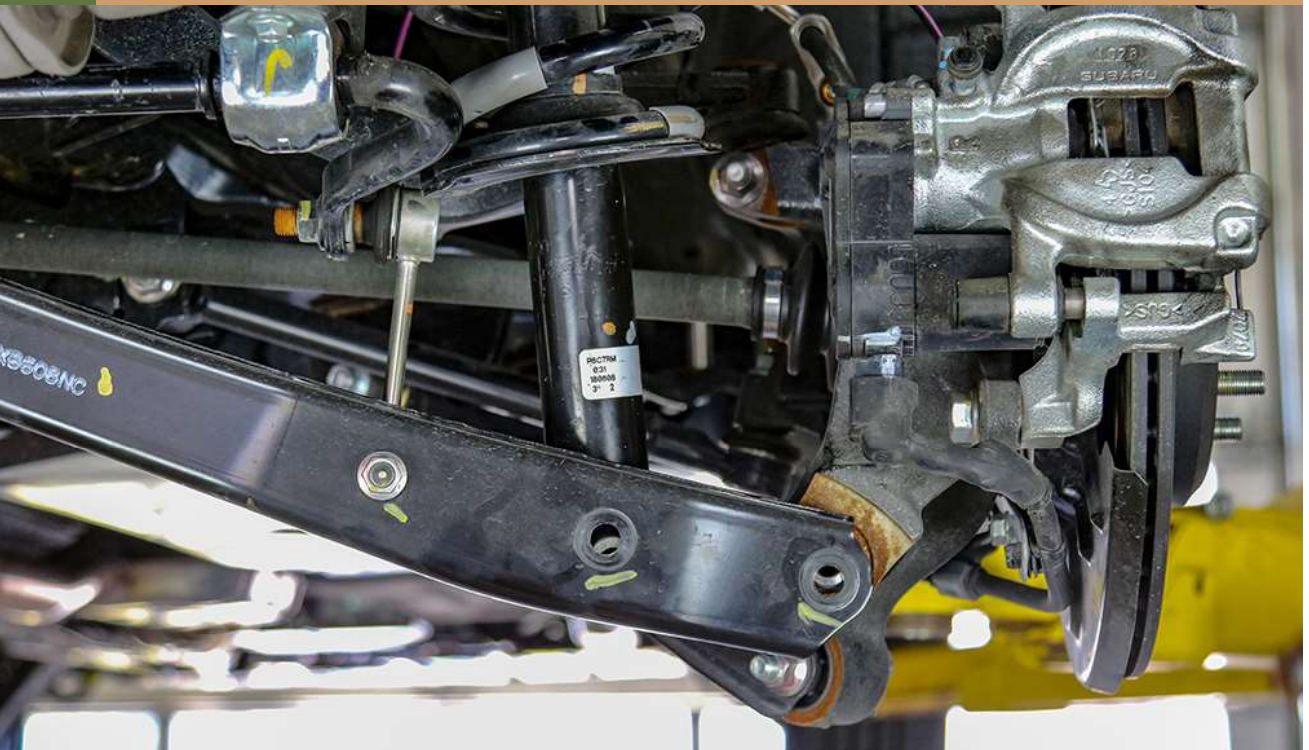
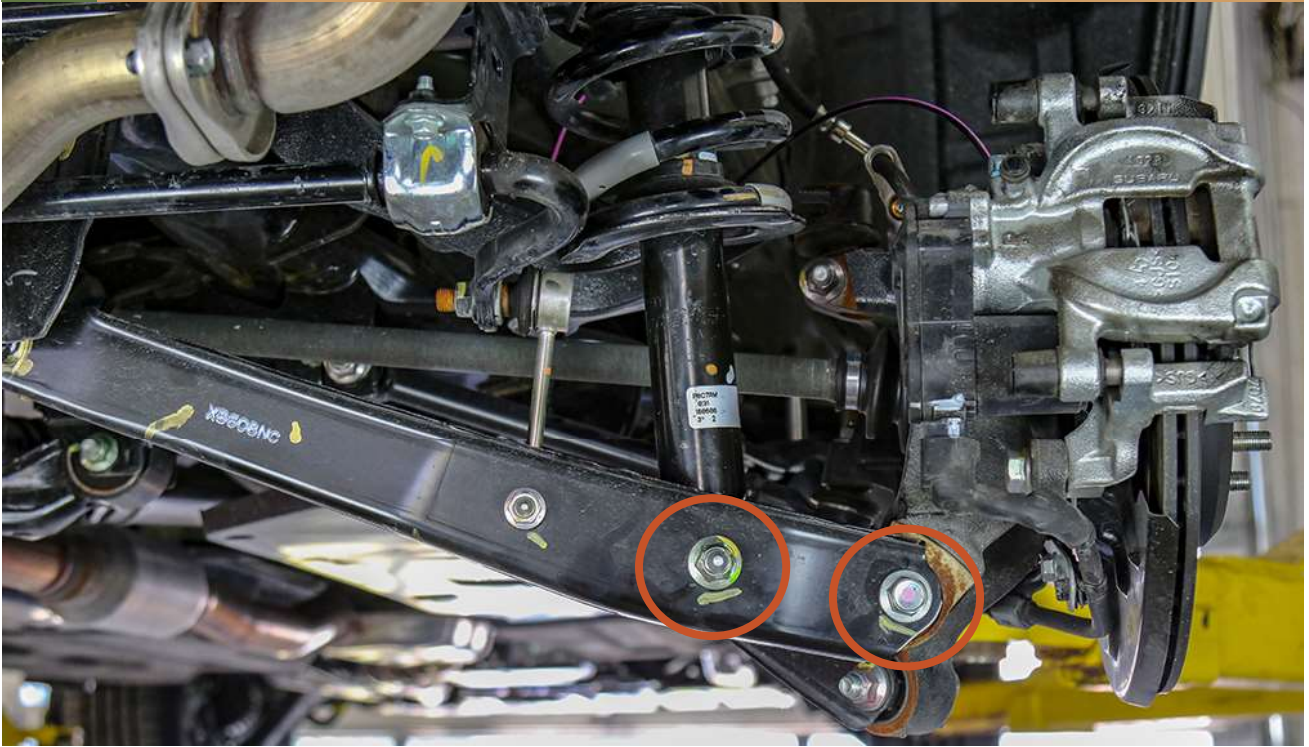
31

YOU CAN NOW REMOVE THE JACK STAND



32

UNSCREW THESE BOLTS



33

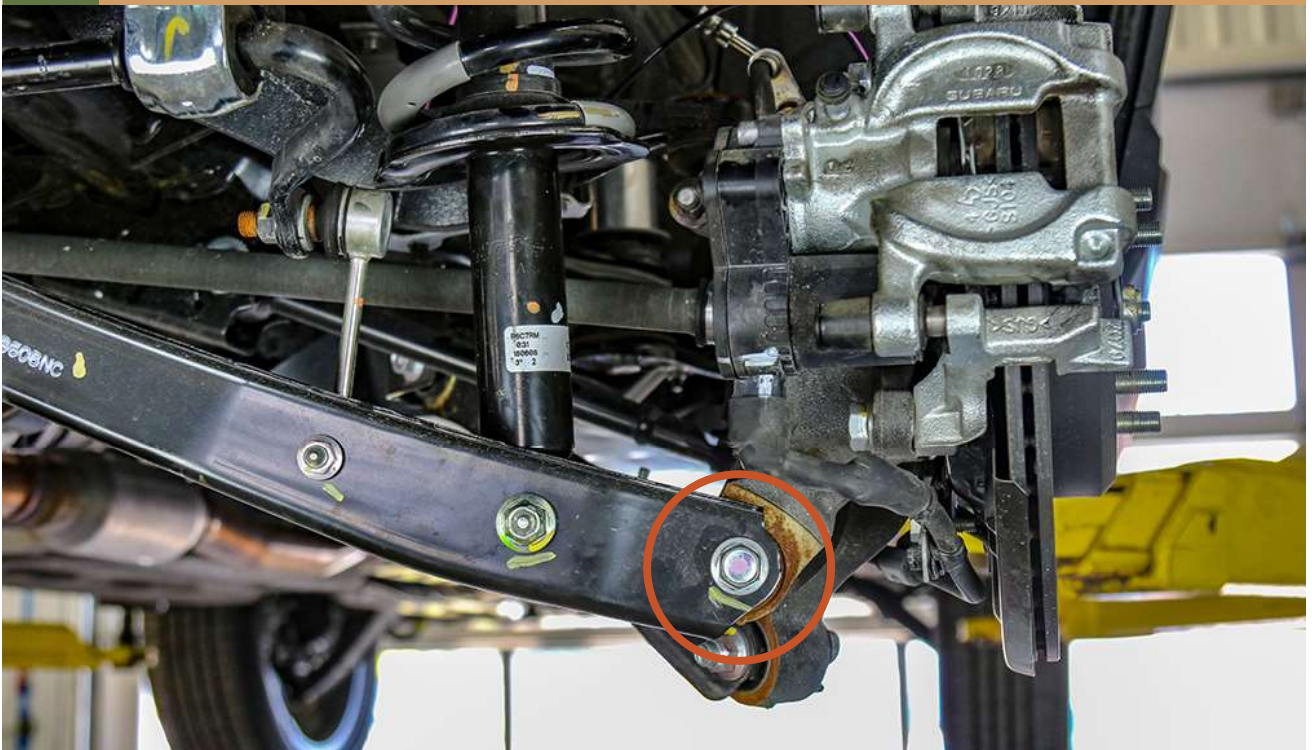
REMOVE THE REARS SHOCKS



34

INSTALL THE TOP PLATES SPACERS





NOTE: To make installation easier, you can install this bolts in the other direction

36

TIGHTEN THE BOLTS OF THE TOP OF THE SUSPENSION



37

REINSTALL THE PLASTIC COVERS





38

UNBOLT THE TWO AXLEBACK EXHAUSTS



39

REPLACE THE BOLTS WITH THOSE PROVIDED (BAG #7)



ROTATE THE EXHAUST LIKE THIS:



40

REINSTALL THE METAL SHEET WITH THE PROVIDED SPACERS



USE THE SPACERS PROVIDED IN THE BAG #6

A



40

USE THE SPACERS PROVIDED IN THE BAG #6

B



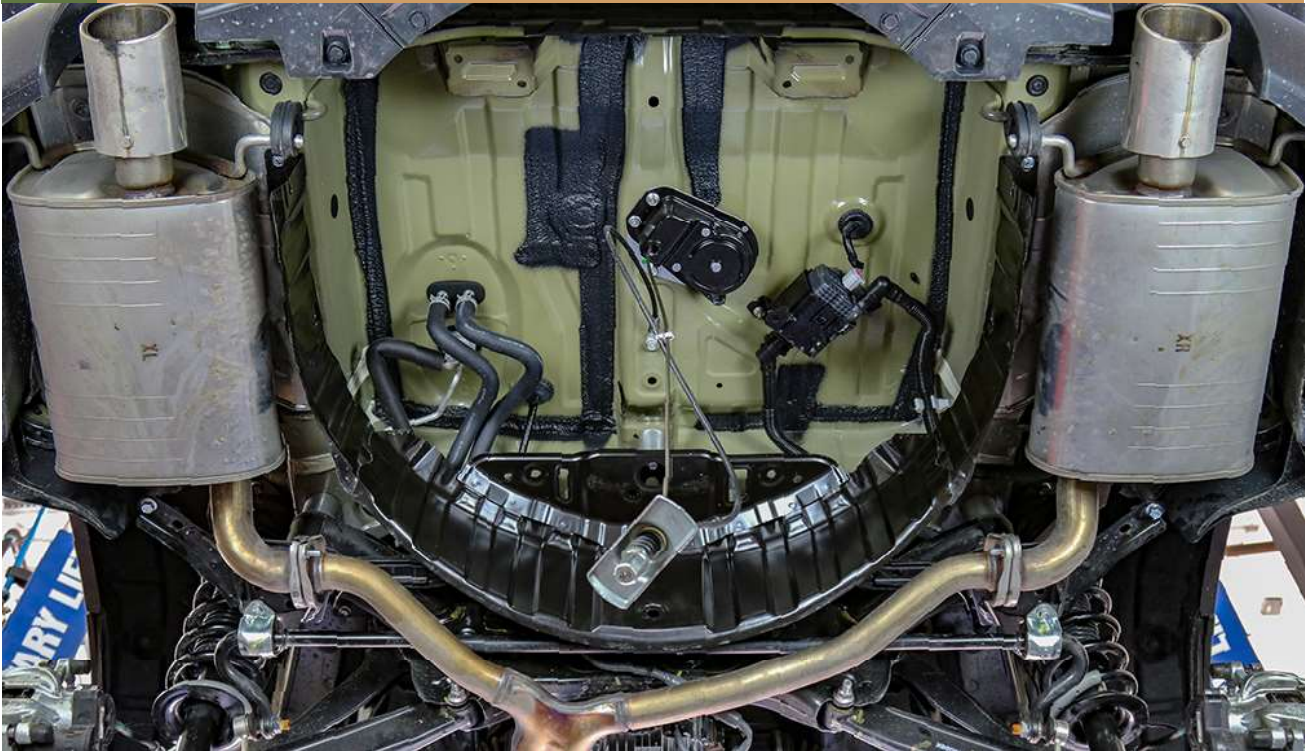
USE THE SPACERS PROVIDED IN THE BAG #6

C



NOTE: You must put the heat protection plates over the metal sheet that surrounds the spare tire.

INSTALLATION COMPLETED



40

REINSTALL THE SPARE TIRE IN PLACE



41

REINSTALL THE TRUNK FLOOR

A



ALL DONE

B



▼
NOTES:

Tighten all the bolts to the manufacturer's specifications with a Torque Wrench

Double check your work.
Reinstall the wheels and be sure to tighten the nuts with a torque wrench.

Wheel alignment is required after installation.

Products warnings:
<https://lpaventure.com/pages/products-warnings>

Limited product warranty:
<https://lpaventure.com/pages/limited-product-warranty>



You have completed the installation.
Thank you for your interest
in our products.

For all requests, information or
assistance: Contact our team
by phone at
1 (866) 562-1316

We are available Monday to Friday
Between 8AM and 5PM (EST).

Or by email at :
SALES@LAVENTURE.COM
WWW.LPAVENTURE.COM

NOW, ENJOY THE RIDE!