



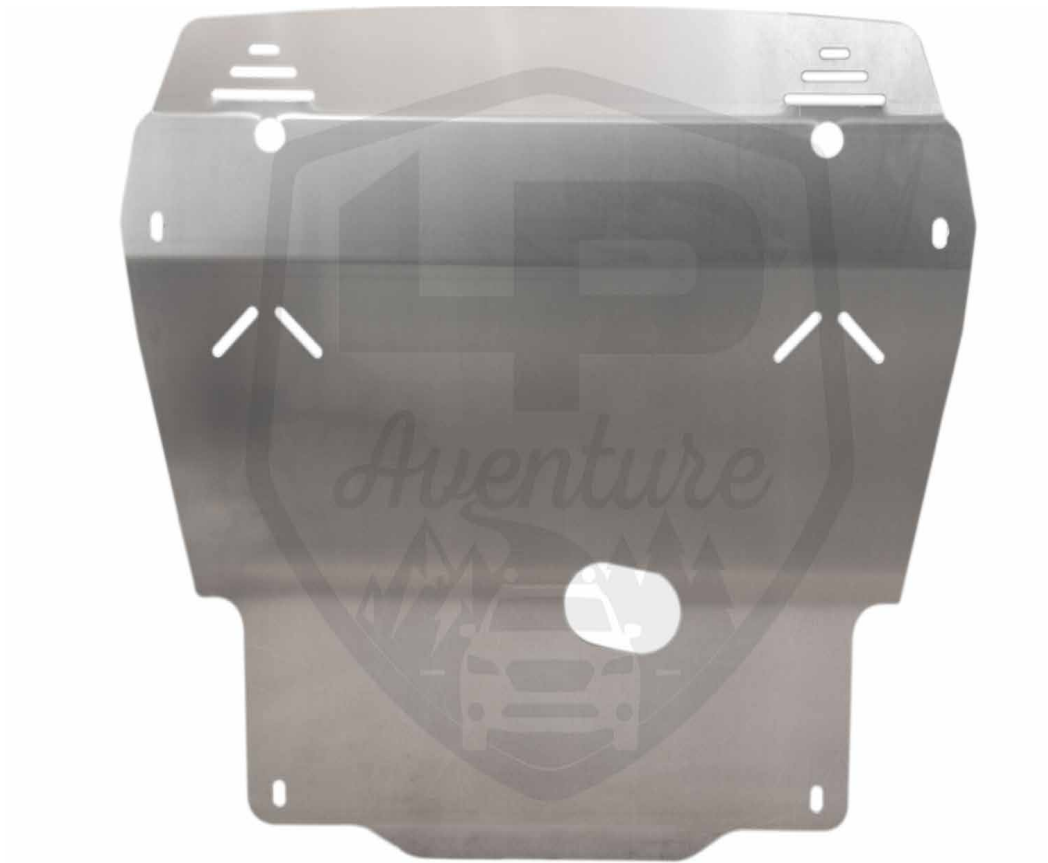
-INSTALLATION- INSTRUCTIONS

▶ LP ADVENTURE MAIN SKID PLATE ◀

SUBARU WRX 2022 +

CONGRATULATIONS FOR YOUR NEW LP AVENTURE SKID PLATE!

If you have any questions or need assistance
during the installation please
contact our team. You
can find the information
on the last
page.



IN
THE
BOX



IN THE BAG



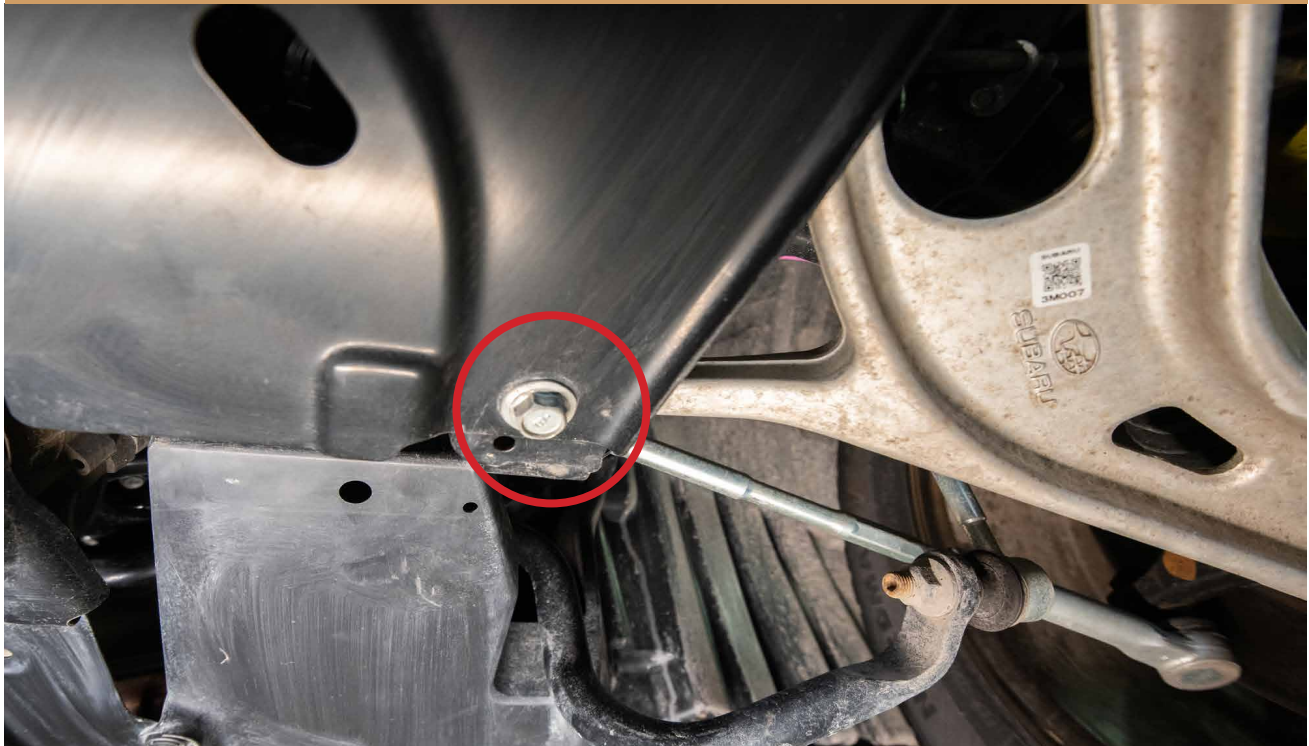
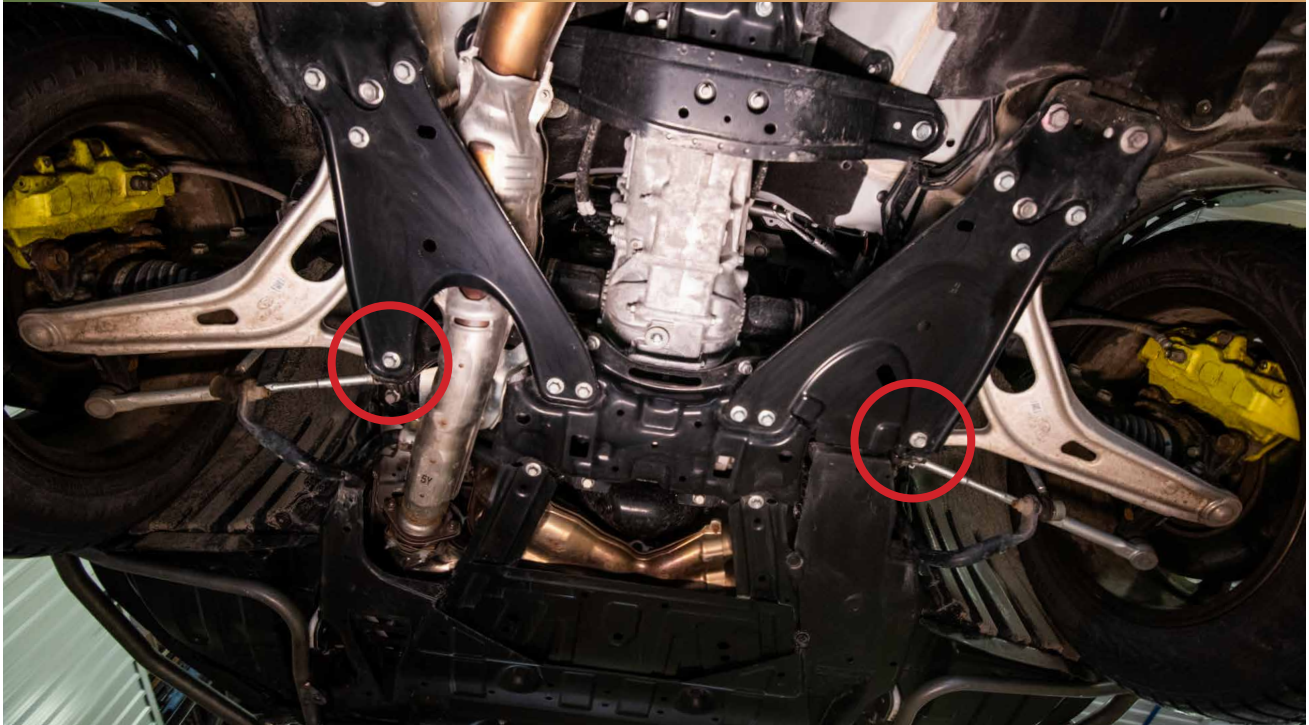


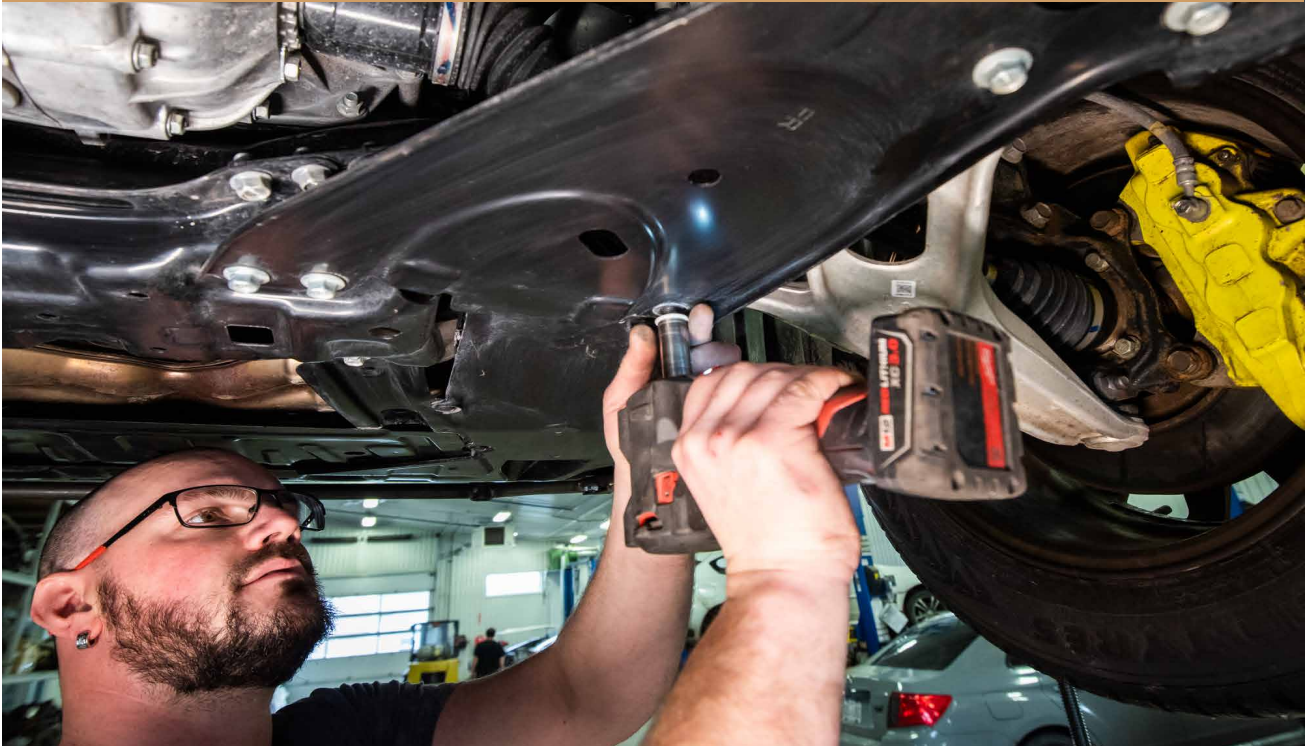
NECESSARY TOOLS

- We recommend the use of a lift**
- Transmission jack (or regular jack if not on a lift)**
- Ratchet**
- 14mm Socket**
- 17mm Socket**

1

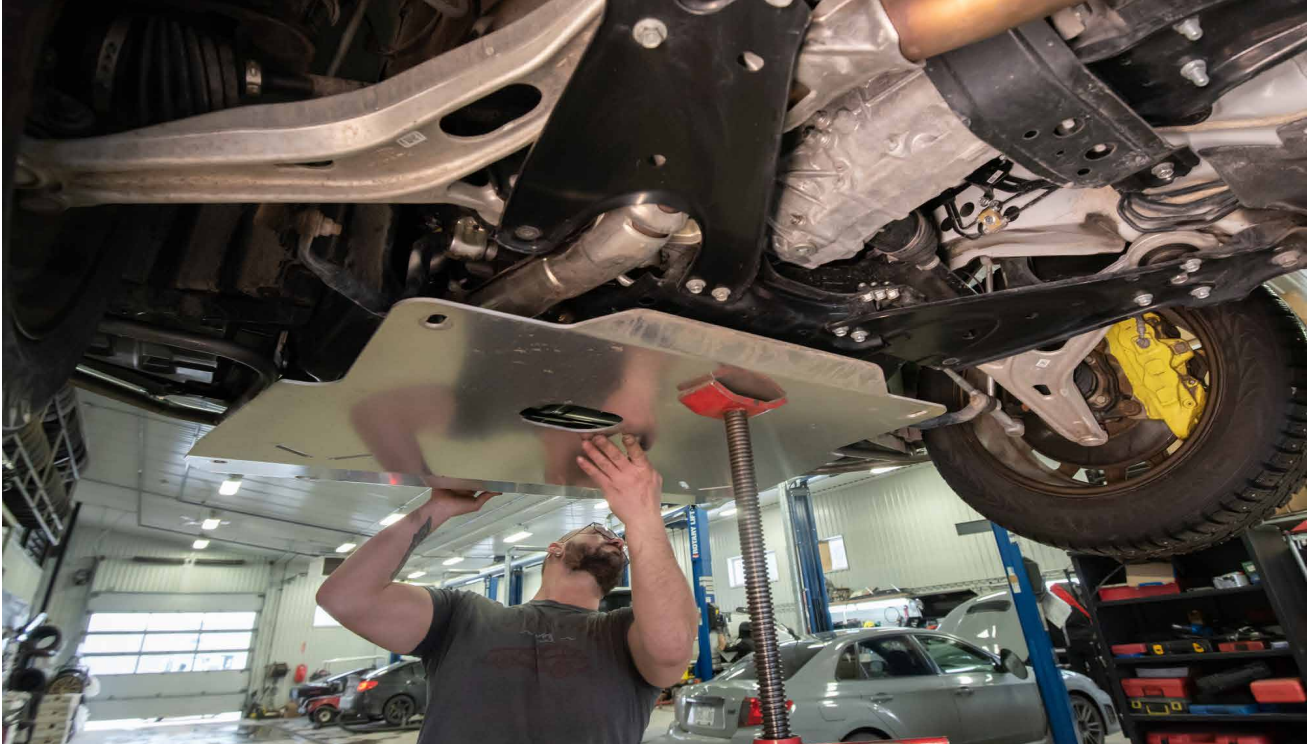
WITH A LP AVENTURE BUMPER GUARD INSTALLED REMOVE THESE TWO BOLTS FOR THE REAR OF THE SKID PLATE





2

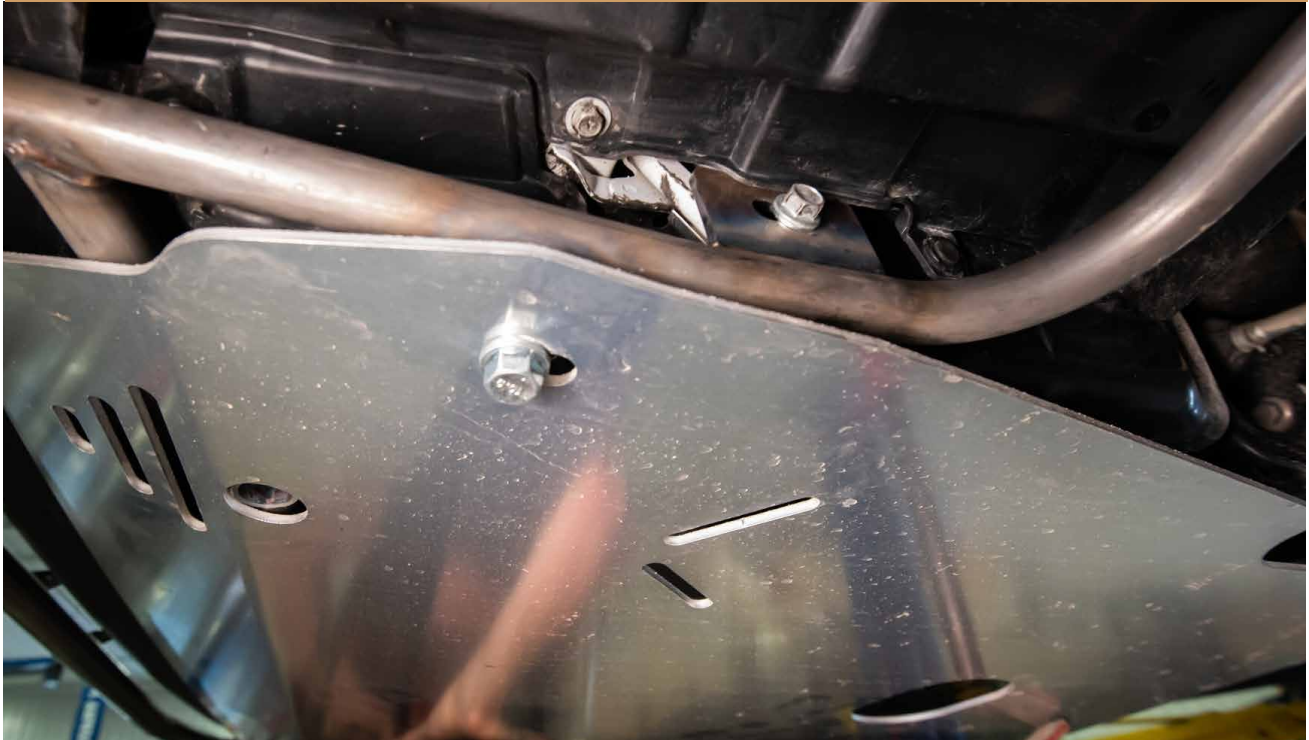
***USE A JACK TO HELP SUPPORT THE SKID PLATE WHILE INSTALLING AND RAISE THE SKID INTO PLACE**



3

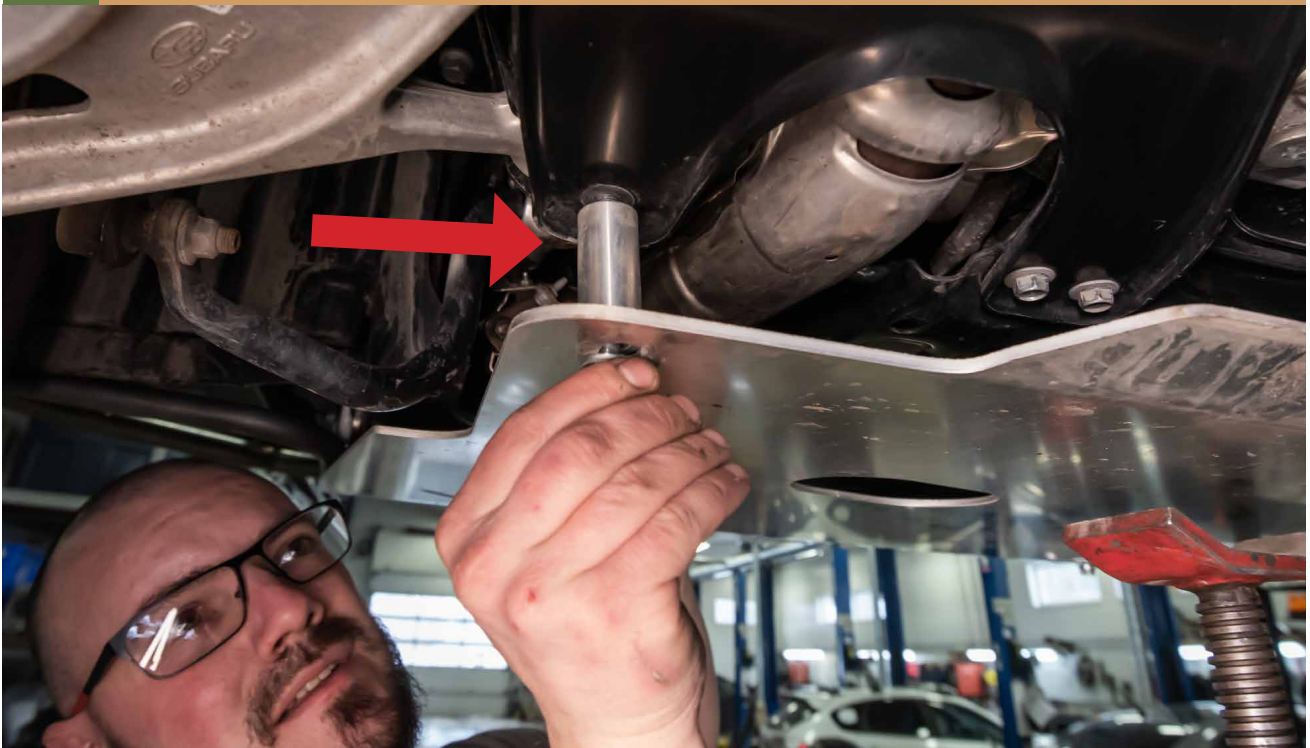
BOLT UP FRONT OF THE SKIDPLATE TO THE BUMPER GUARD
*** IF YOU HAVE OUR OPTIONAL RALLY WASHERS NOW IS THE TIME TO INSTALL**





4

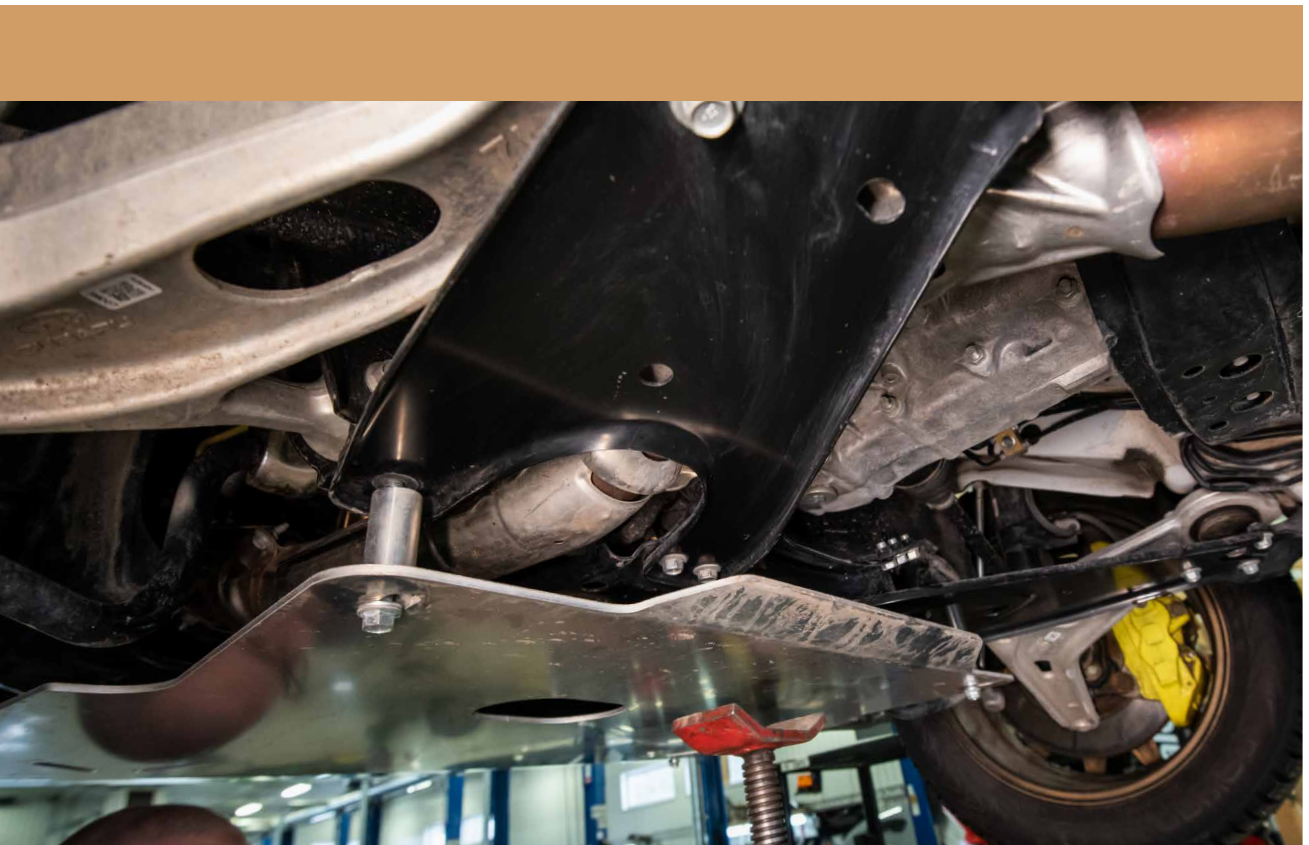
INSTALL REAR SKIDPLATE SPACERS



5

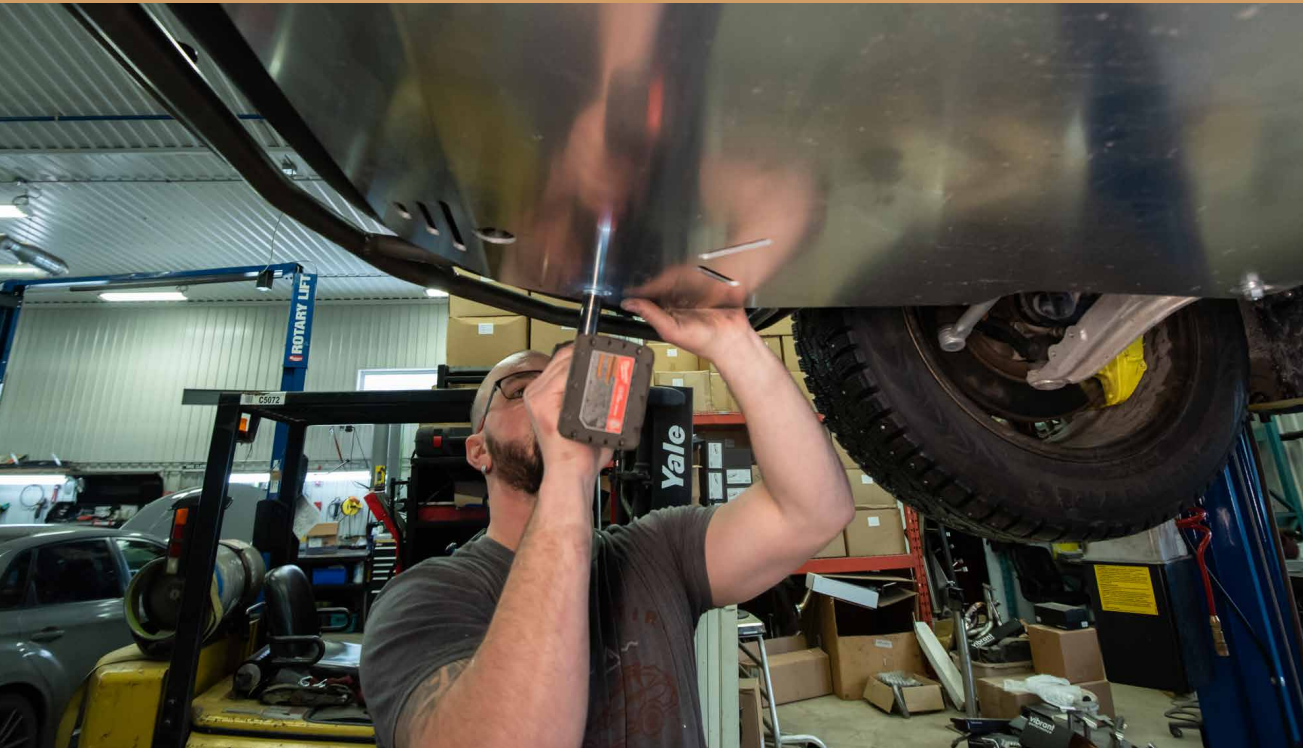
INSTALL SUPPLIED BOLTS WITH WASHERS

* IF YOU HAVE OUR OPTIONAL RALLY WASHERS NOW IS THE TIME TO INSTALL



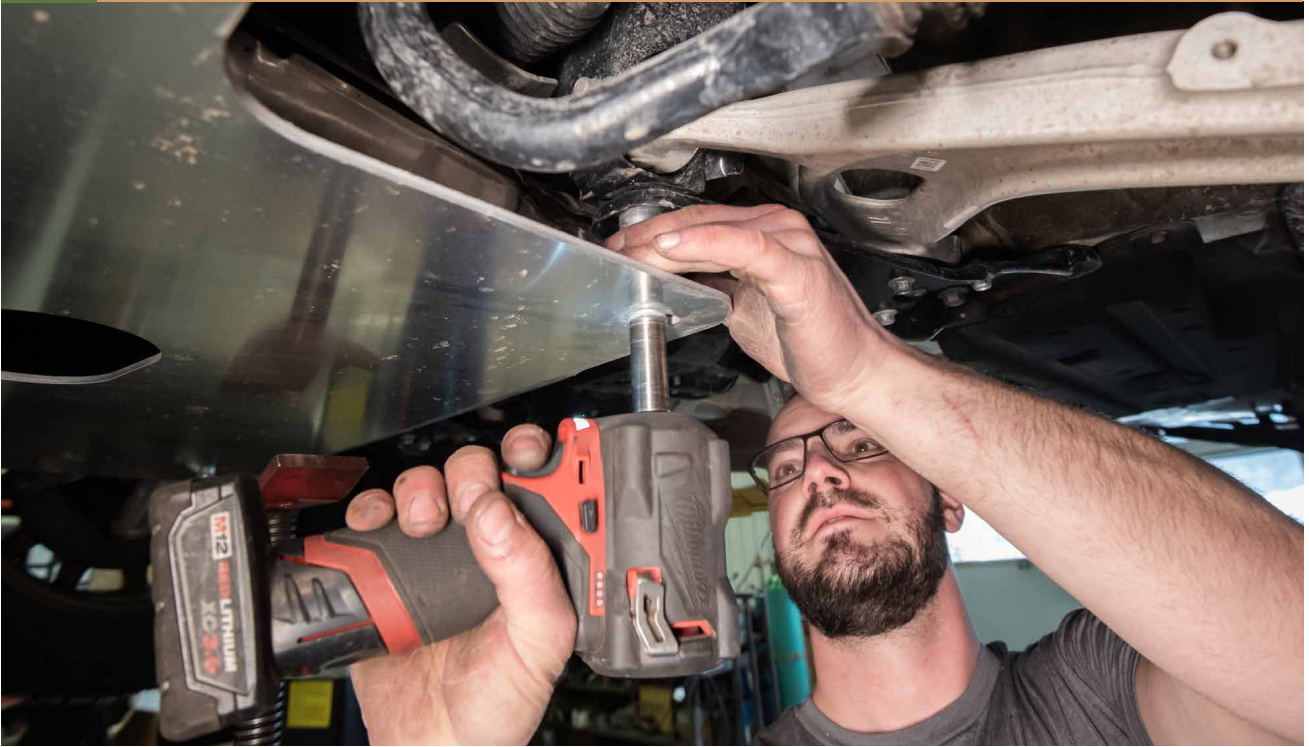
6

MAKE SURE THE HOLES IN THE SKID PLATE ARE CENTERED WITH THE SLEEVES OF THE BUMPER GUARD, THEN YOU CAN TIGHTEN THE FRONT HARDWARE



7

TIGHTEN REAR HARDWARE



8

INSTALLATION COMPLETE!





NOTES:

****Tighten all the bolts to the manufacturer's specifications with a Torque Wrench****

**Double check your work.
and be sure to tighten
the nuts with a torque wrench.**

**Products warnings:
<https://lpaventure.com/pages/products-warnings>**

**Limited product warranty:
<https://lpaventure.com/pages/limited-product-warranty>**



**You have completed the installation.
Thank you for your interest
in our products.**

**For all requests, information or
assistance: Contact our team
by phone at
1 (866) 562-1316**

**We are available Monday to Friday
Between 8AM and 5PM (EST).**

**Or by email at :
SALES@LPAVENTURE.COM
WWW.LPAVENTURE.COM**

NOW, ENJOY THE RIDE!