



-INSTALLATION- INSTRUCTIONS



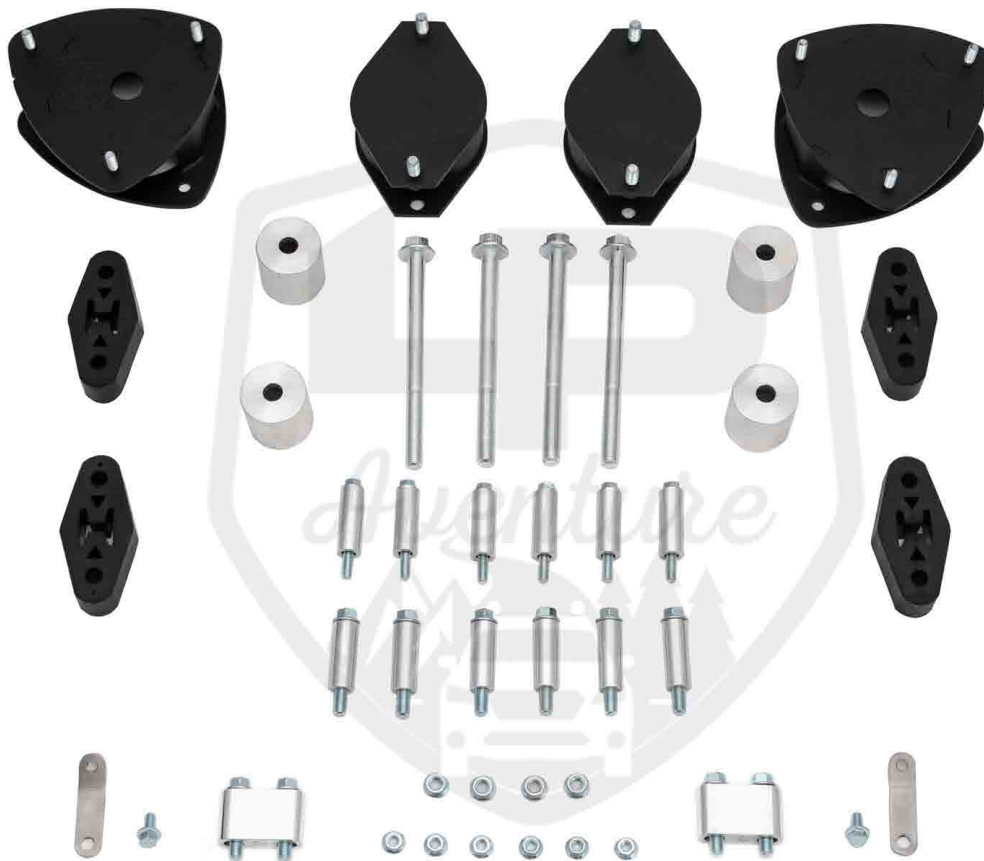
LP ADVENTURE LIFT KIT



SUBARU FORESTER 2014-2018

CONGRATULATIONS FOR YOUR NEW LP AVENTURE LIFT KIT!

If you have any questions or need assistance
during the installation, please
contact our team. You
can find the information
on the last
page.



IN
THE
BOX



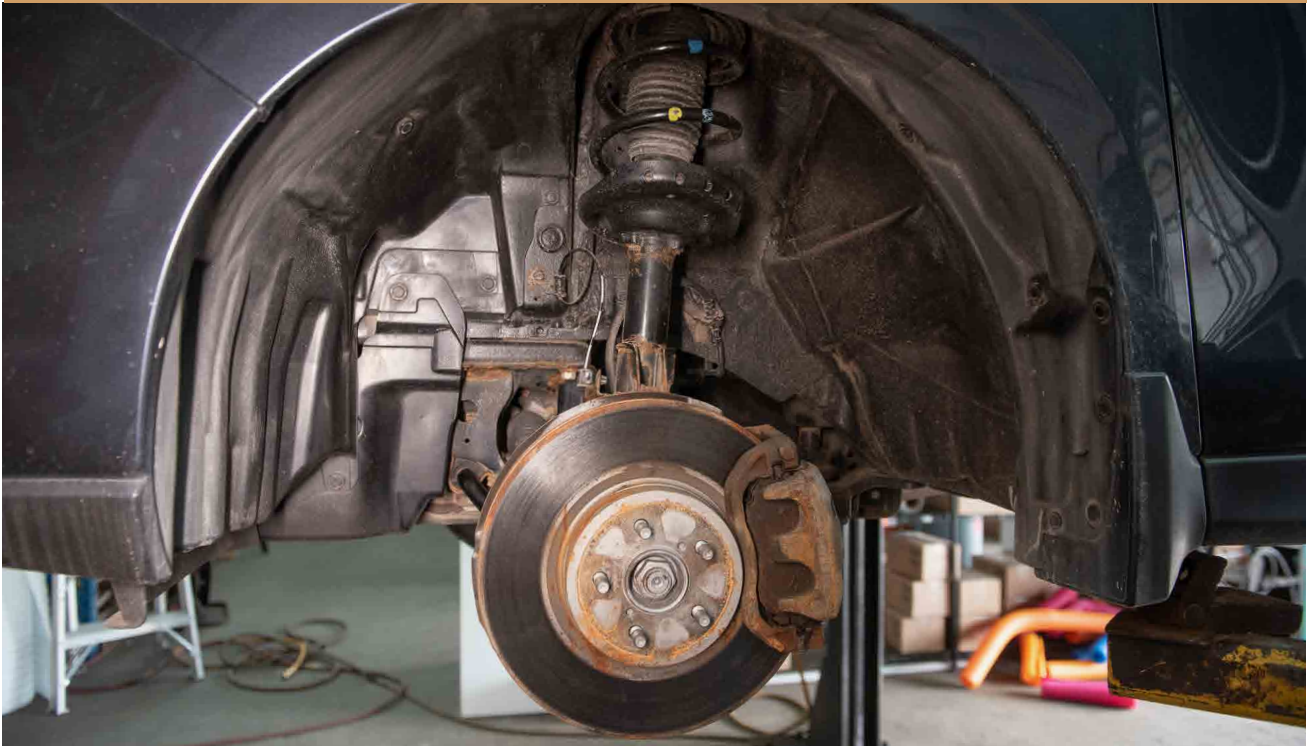


NECESSARY TOOLS

1. - We recommend the use of a lift
2. - Jack stand to support the sub-frame
3. - Ratchet
4. -12mm Socket
5. -14mm Socket
6. -17mm Socket
7. -19mm Socket
8. - 22mm Socket
9. -10mm Wrench
10. -12mm Wrench
11. - 14mm Wrench
12. -17mm Wrench
13. - Exhaust Hanger Removal Pliers

1

REMOVE FRONT WHEELS



2

REMOVE ABS SENSOR BRACKET



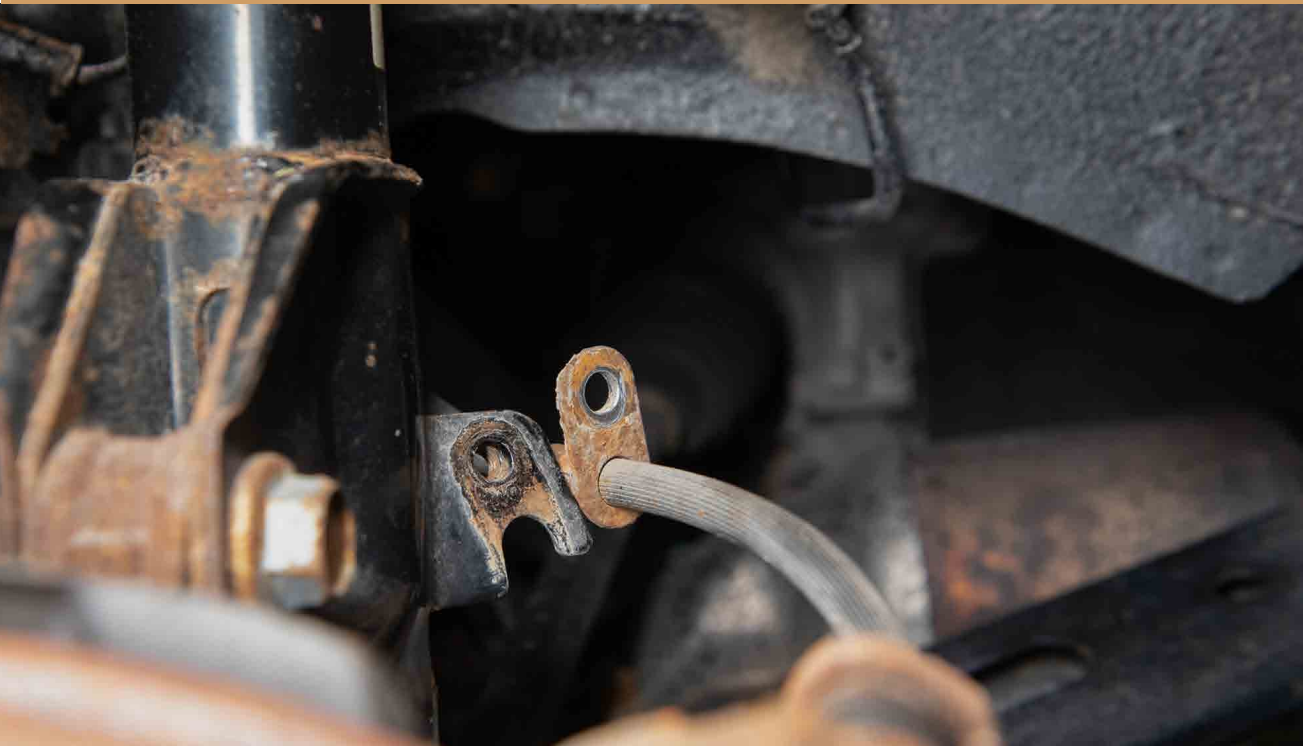
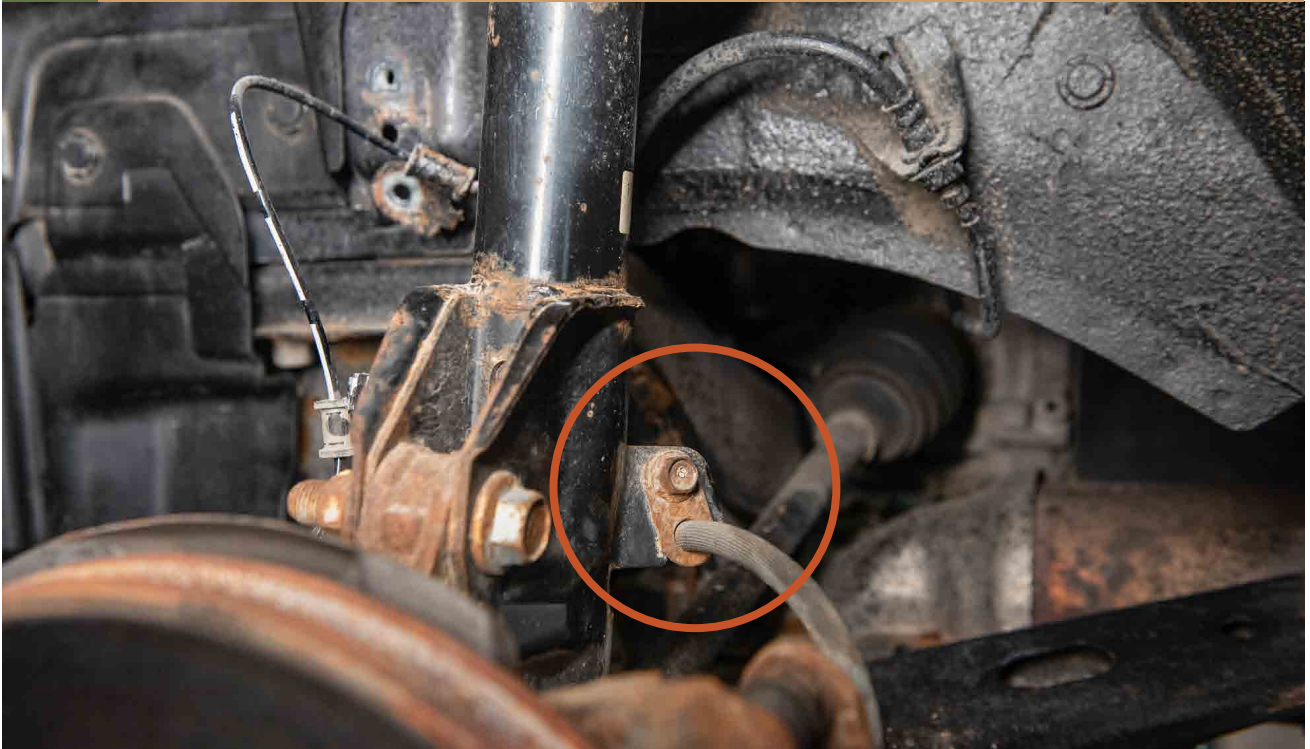
3

UNCLIP ABS SENSOR



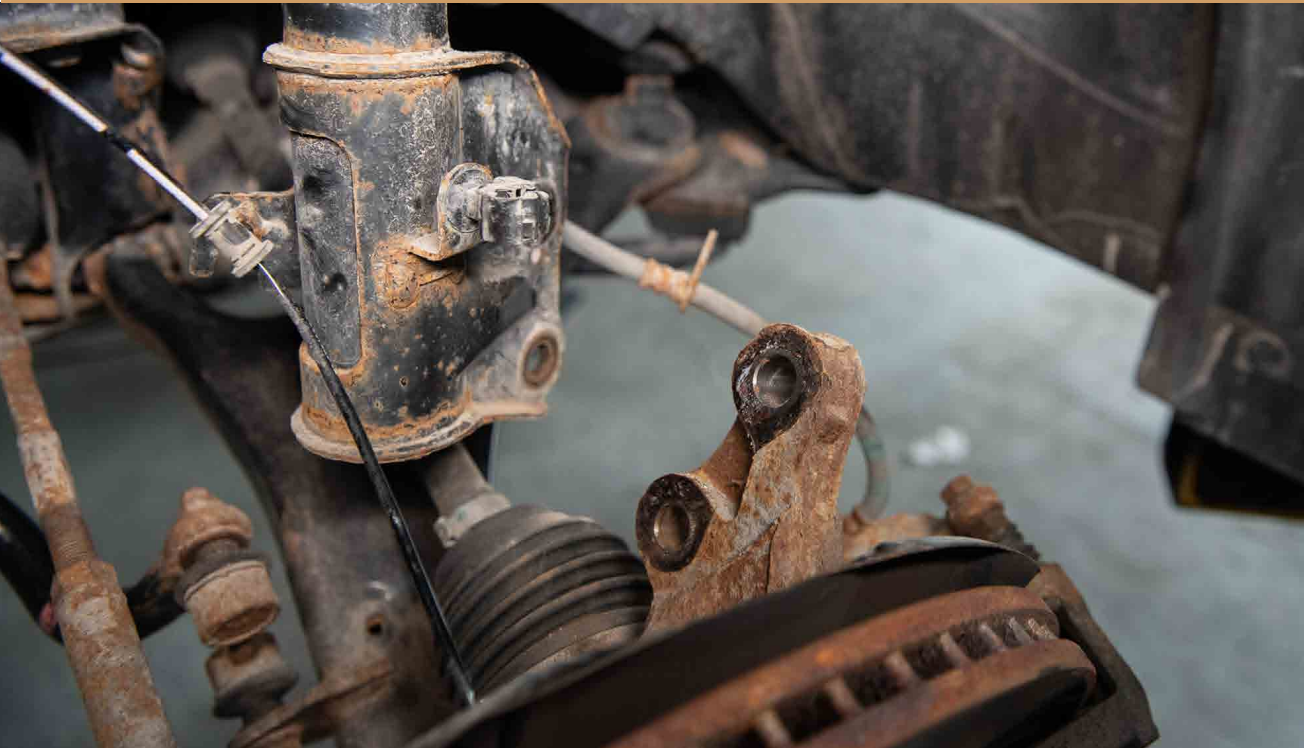
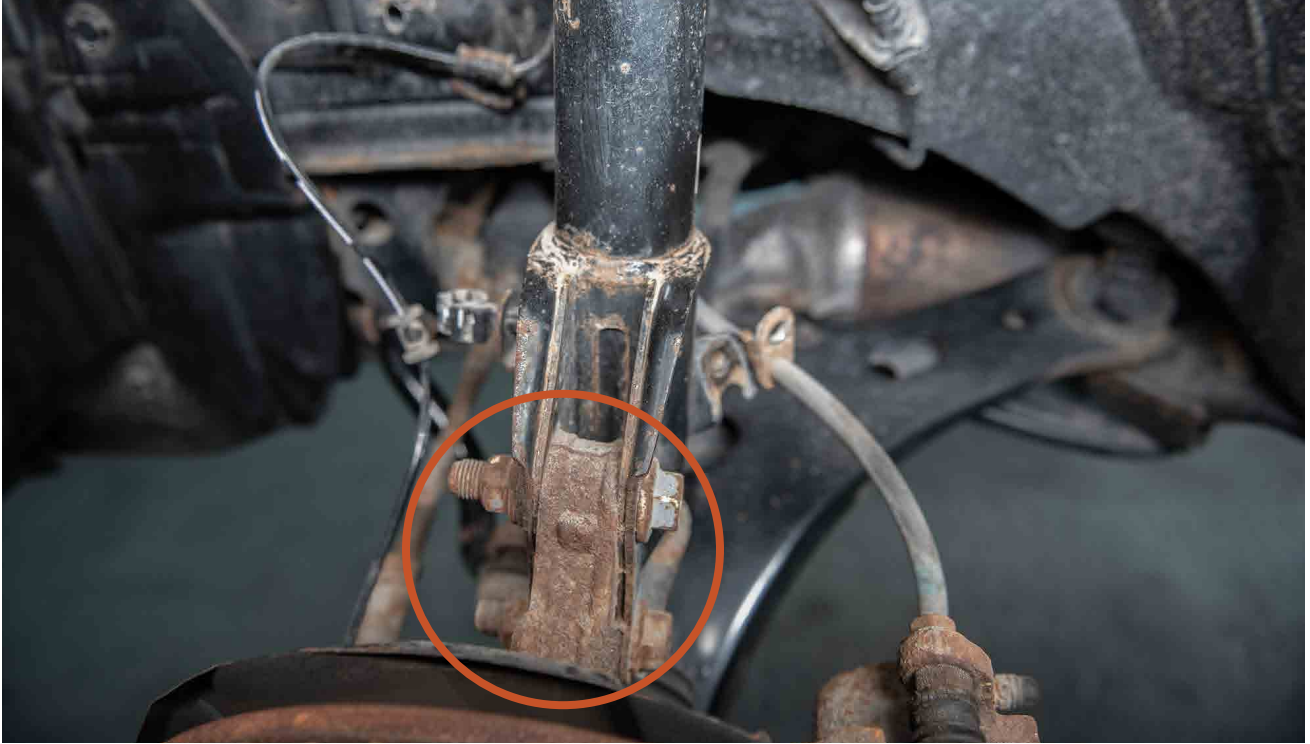
4

REMOVE BRAKE LINE BRACKET



5

UNBOLT STRUT FROM KNUCKLE

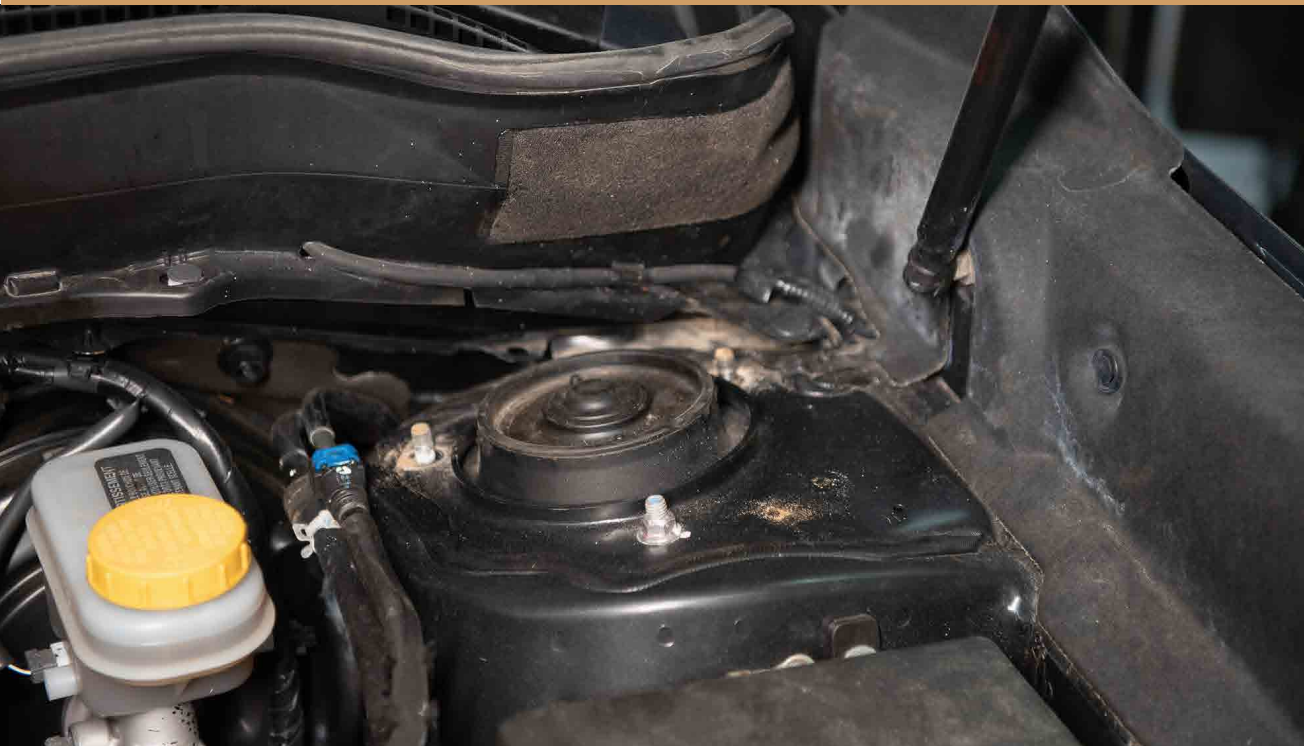


6

REMOVE SUSPENSION ASSEMBLY



REMOVE 2 OUT OF THE 3 STRUT NUTS



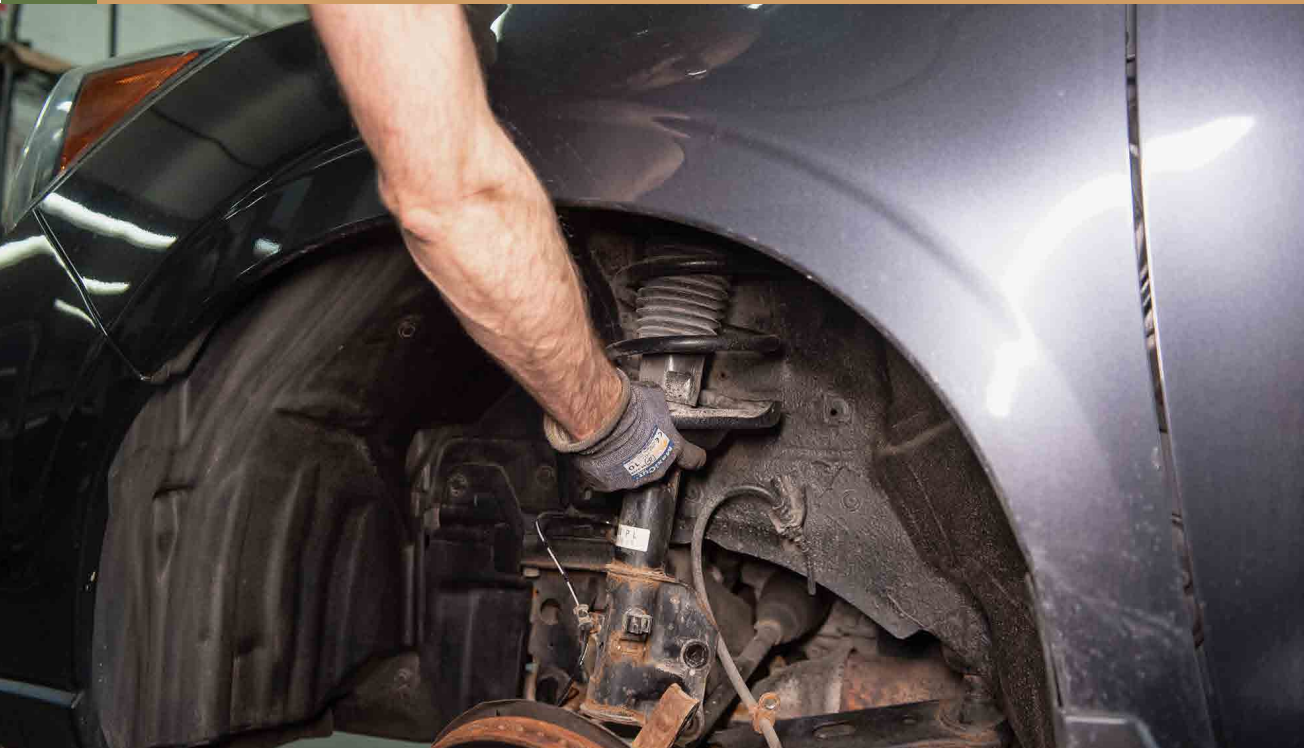
7

WHILE HOLDING THE STRUT ASSEMBLY
REMOVE THE LAST STRUT NUT



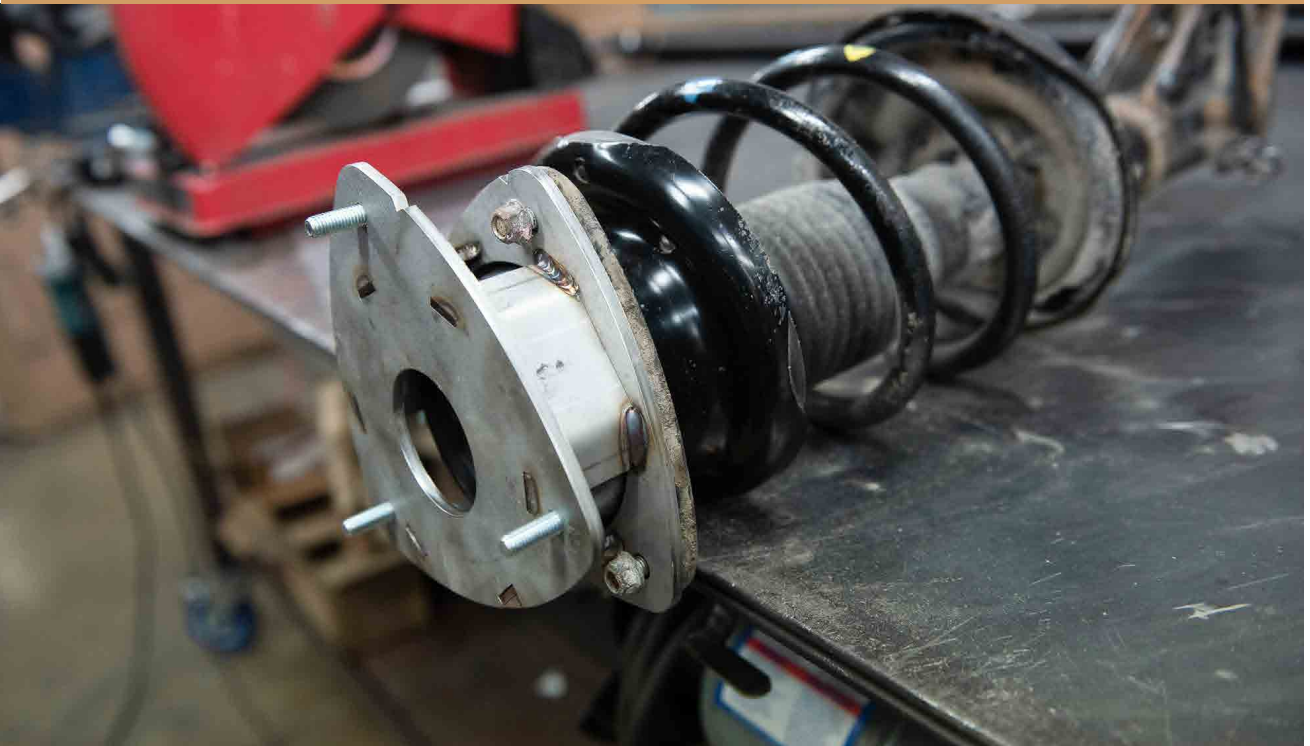
8

REMOVE THE STRUT ASSEMBLY



9

INSTALL TOP PLATE SPACERS



USE A PRY BARE TO HELP SUPPORT THE STRUT WHILE TIGHTENING



10

RE INSTALL STRUT ASSEMBLY



FRONT RIGHT

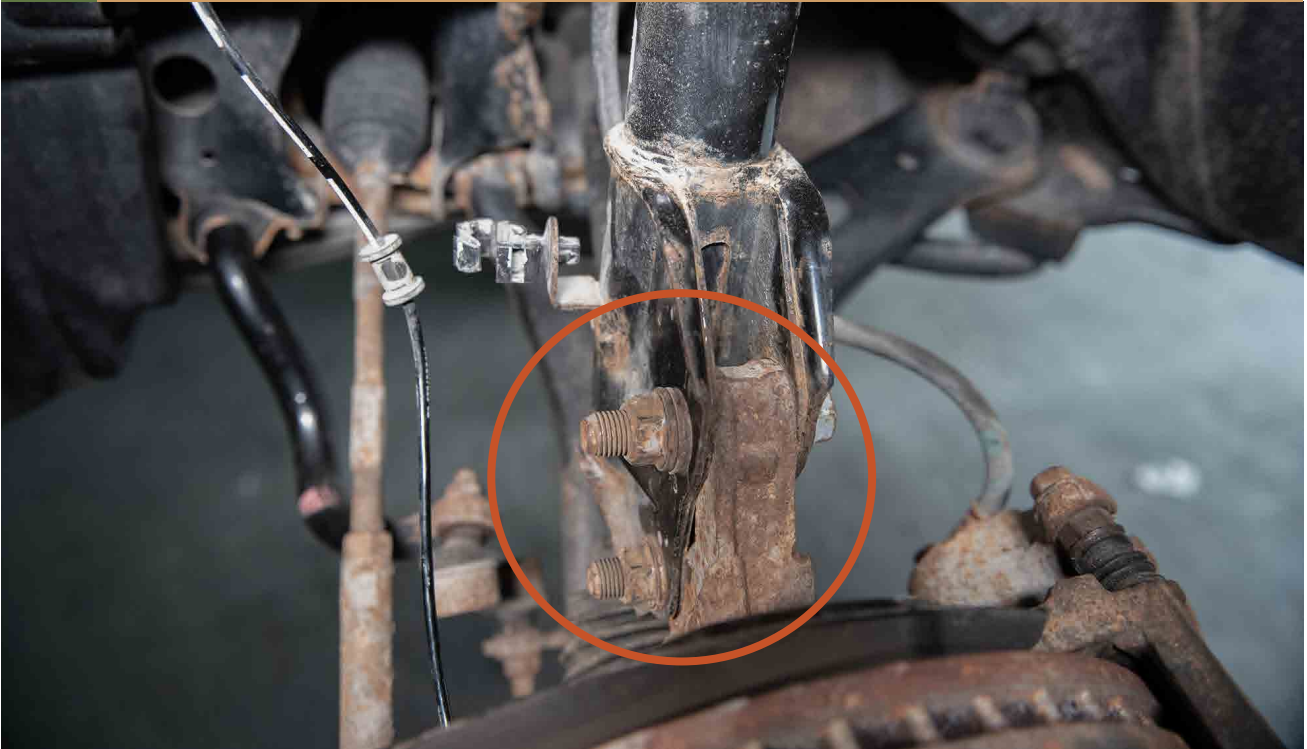
FRONT LEFT

Engravings to the front of the vehicle



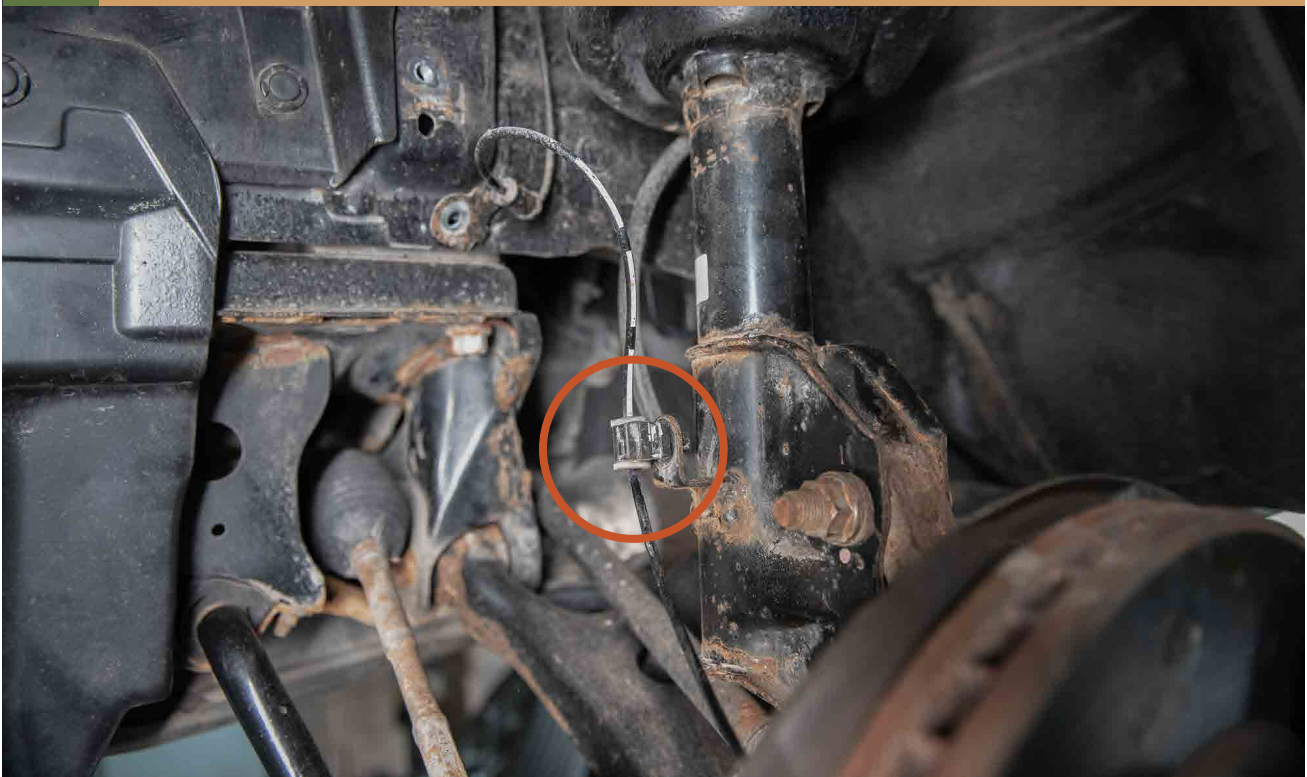
11

RE INSTALL LOWER STRUT BOLTS



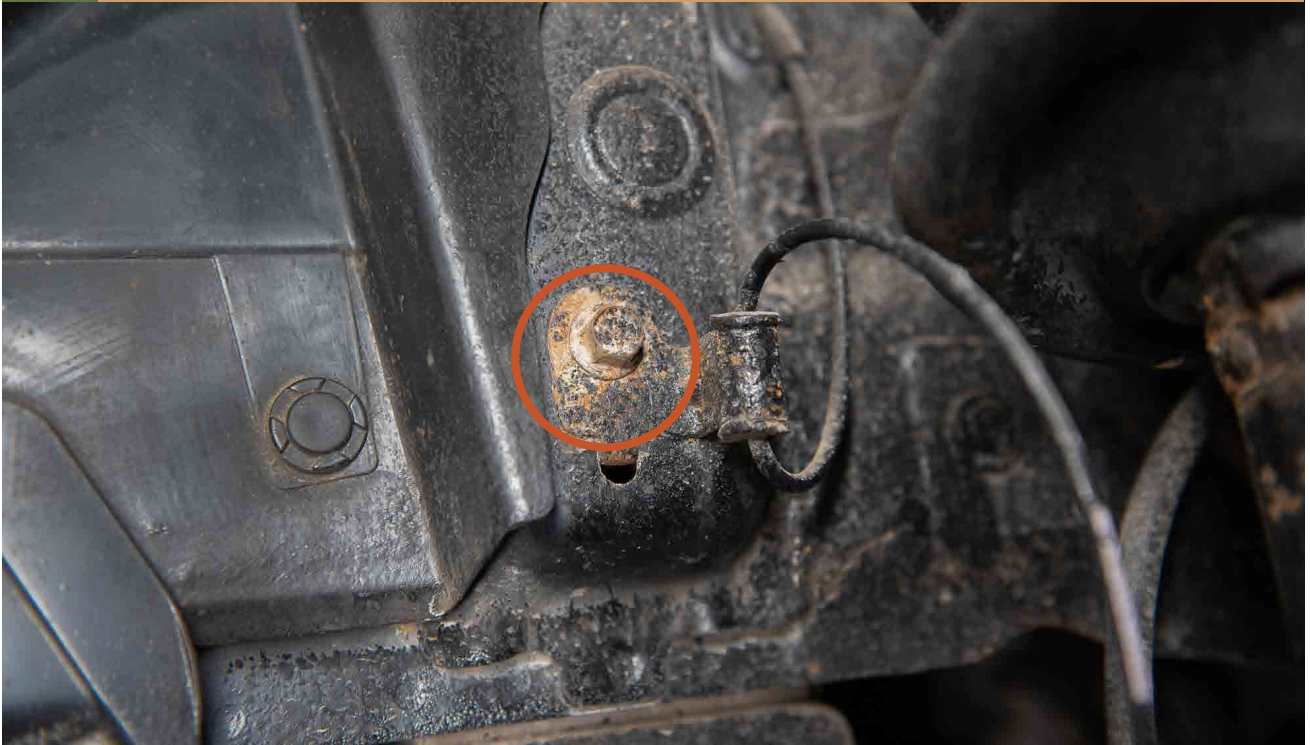
12

RE CLIP ABS SENSOR



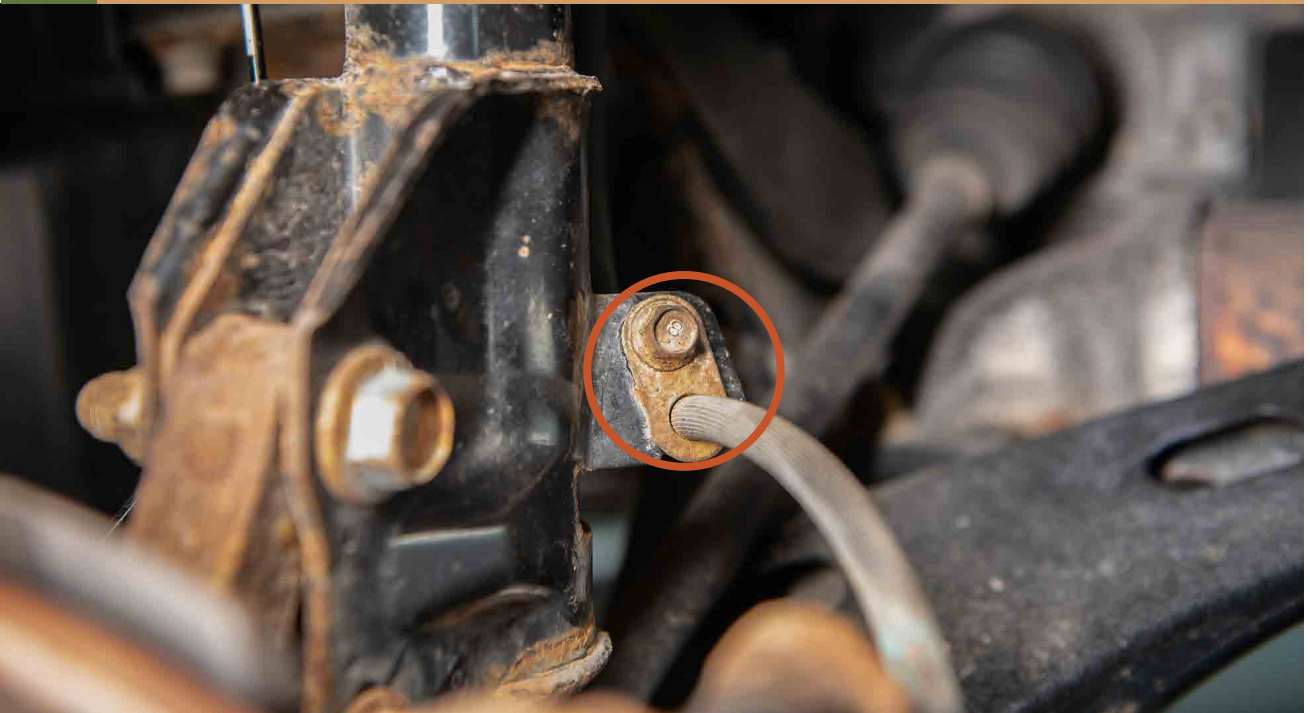
13

RE INSTALL ABS SENSOR CABLE BRACKET



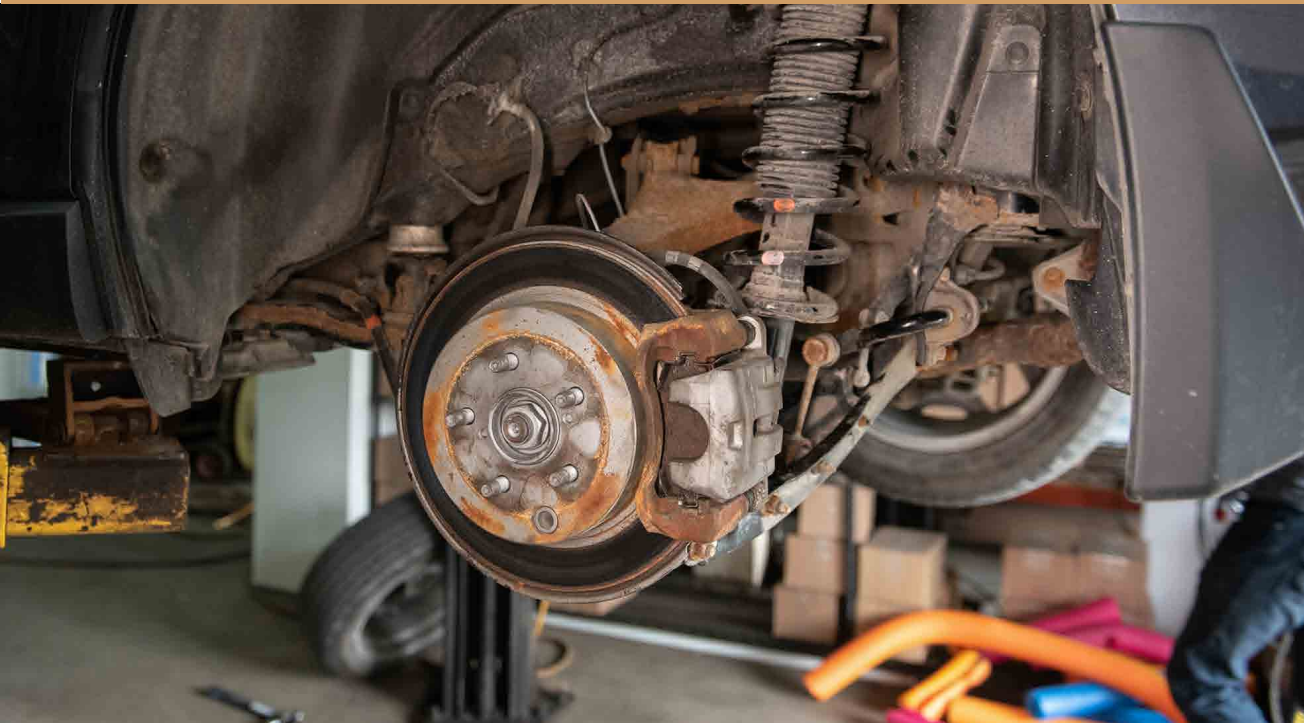
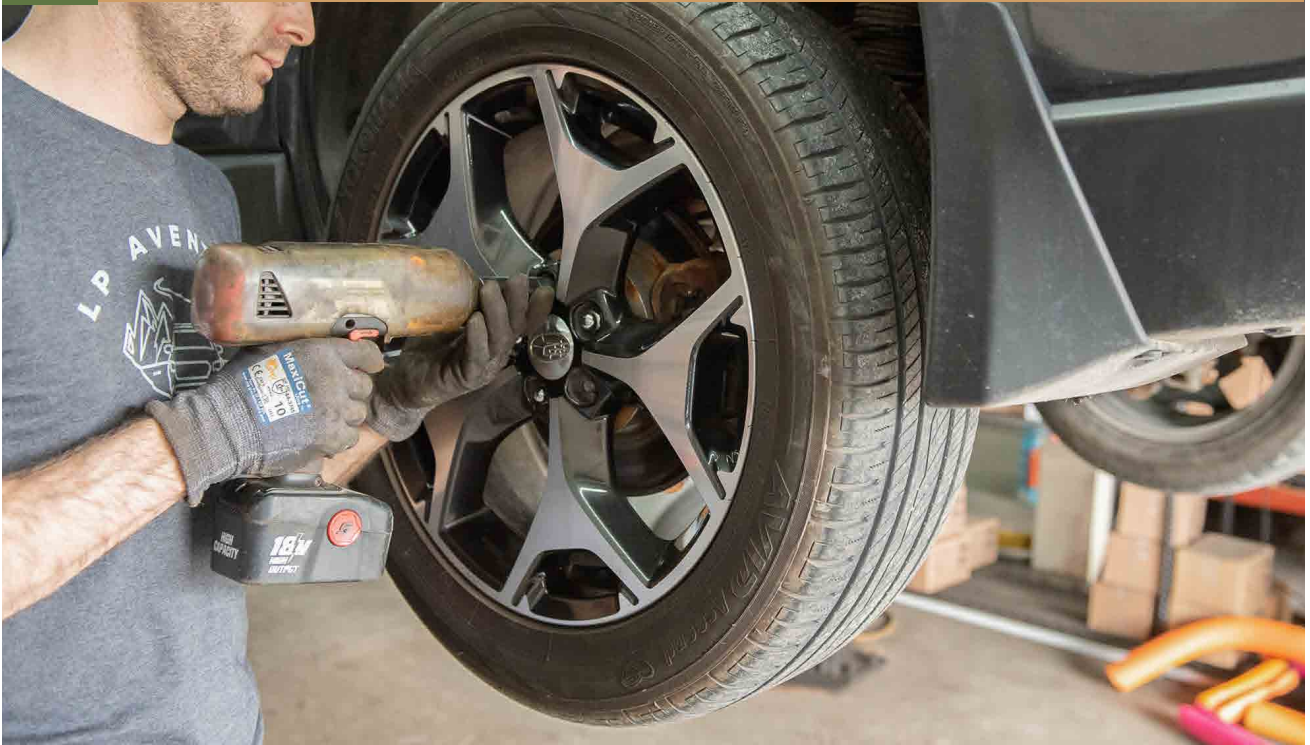
14

RE INSTALL BRAKE LINE BRACKET



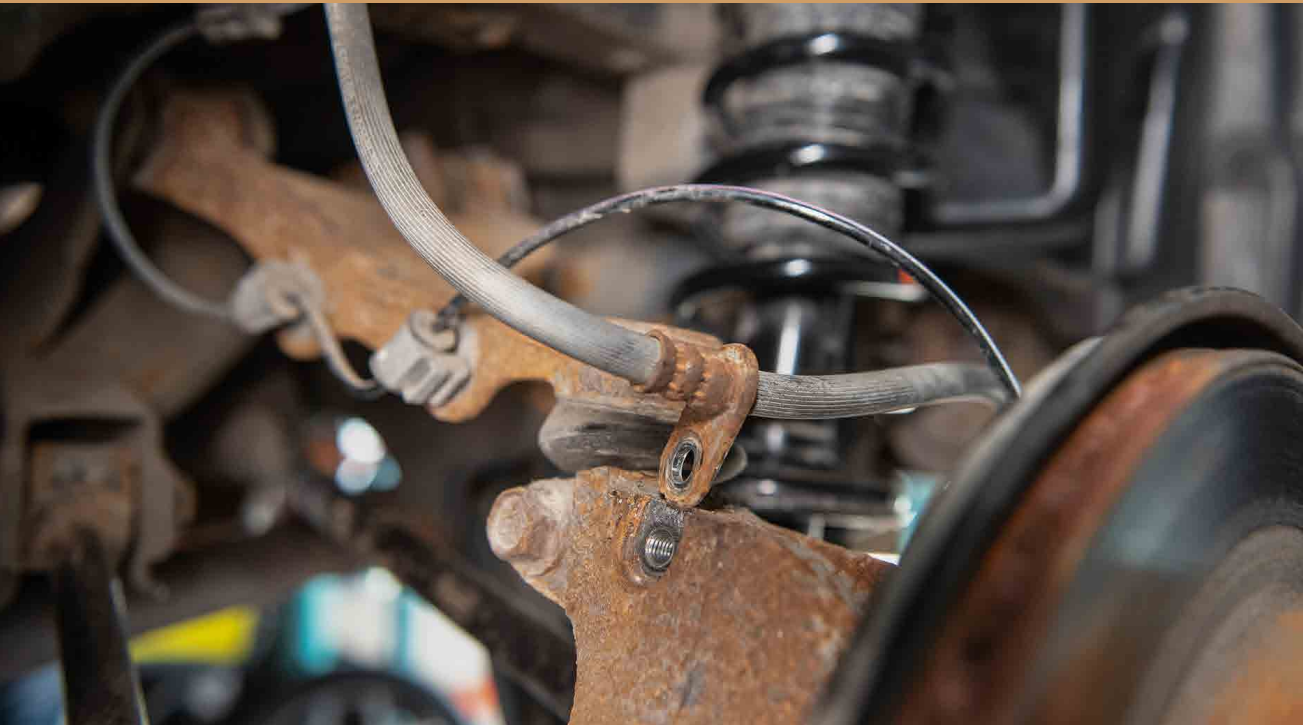
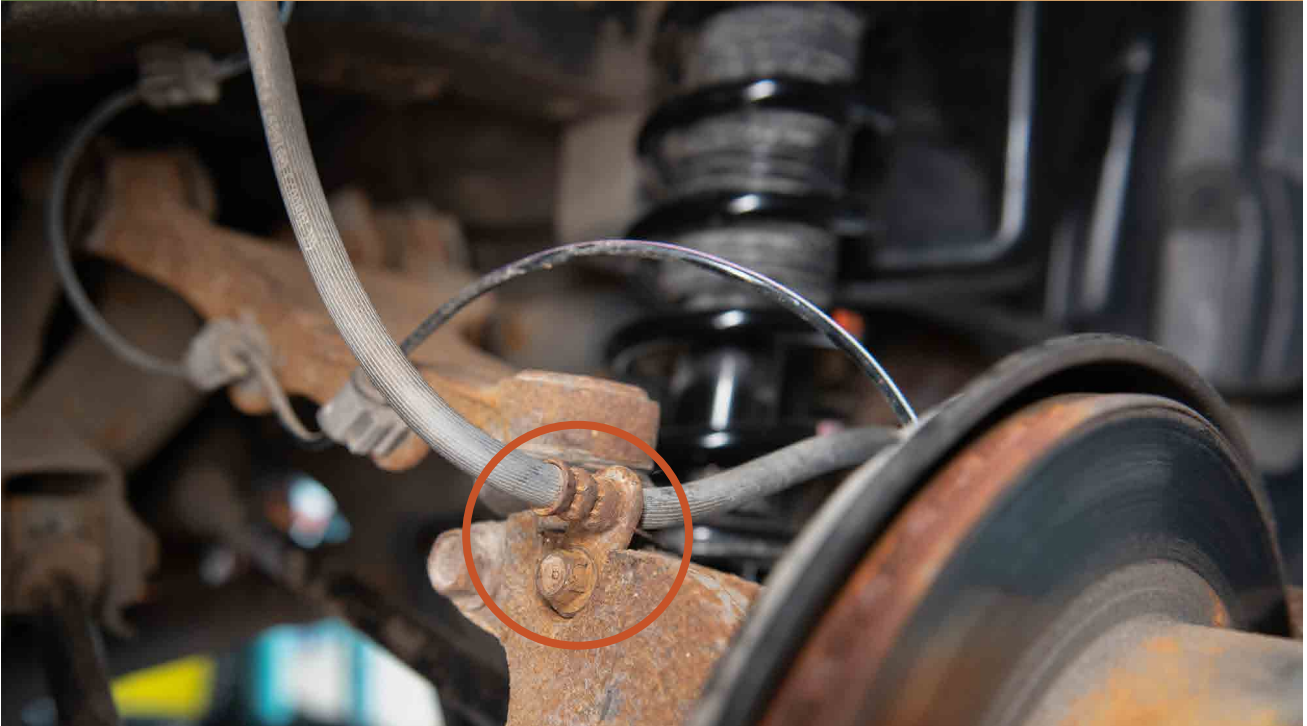
15

REMOVE REAR WHEELS



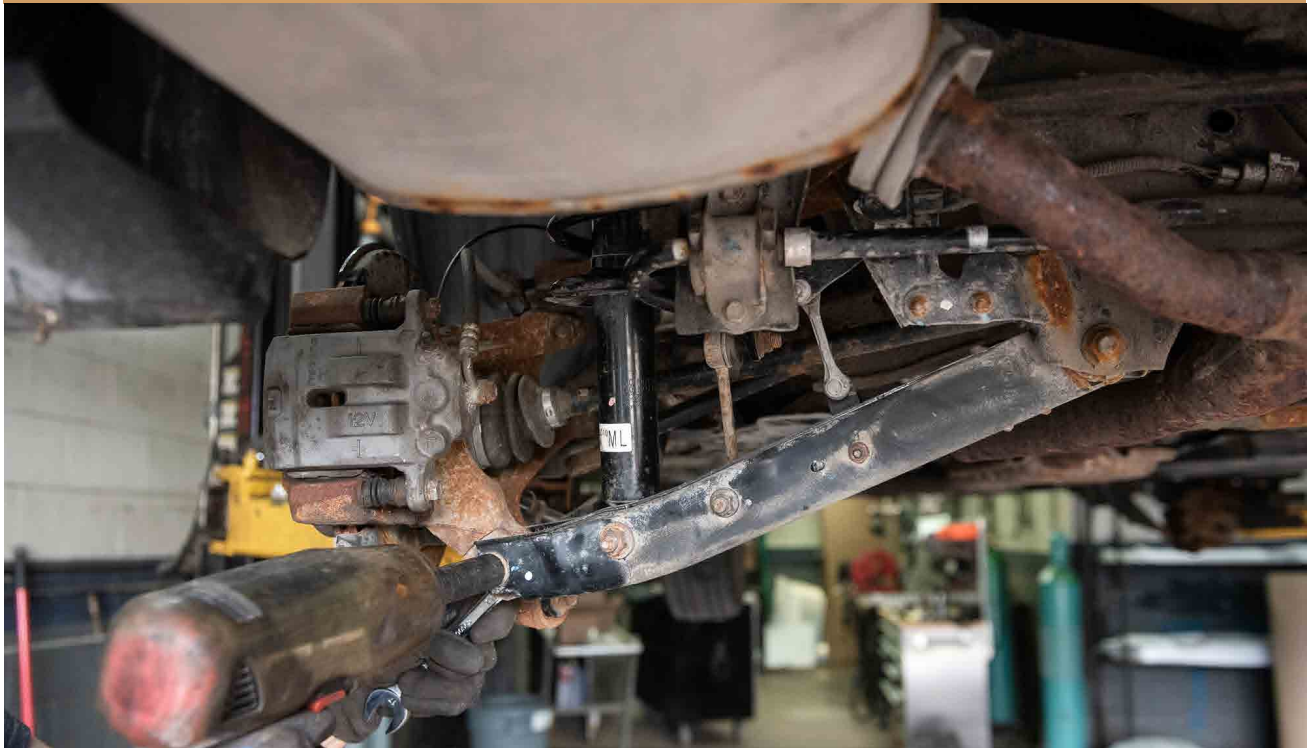
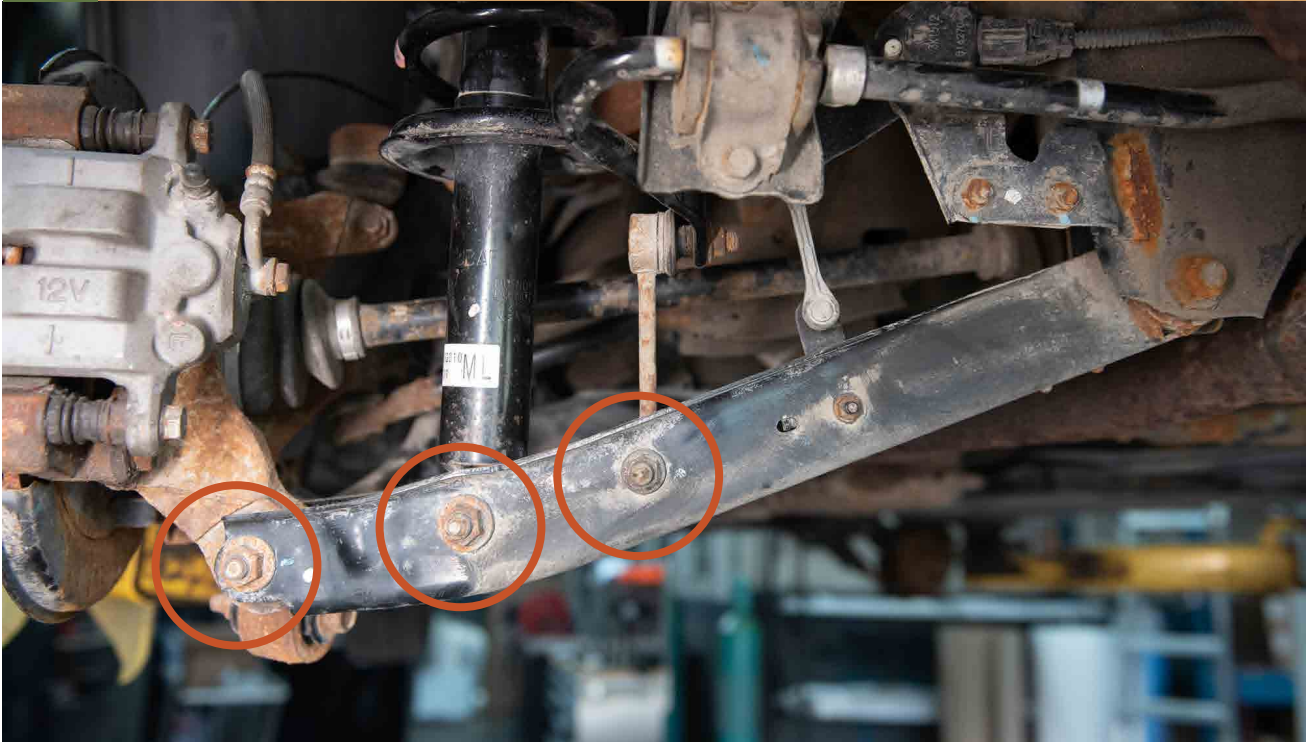
16

REMOVE BRAKE LINE BRACKET

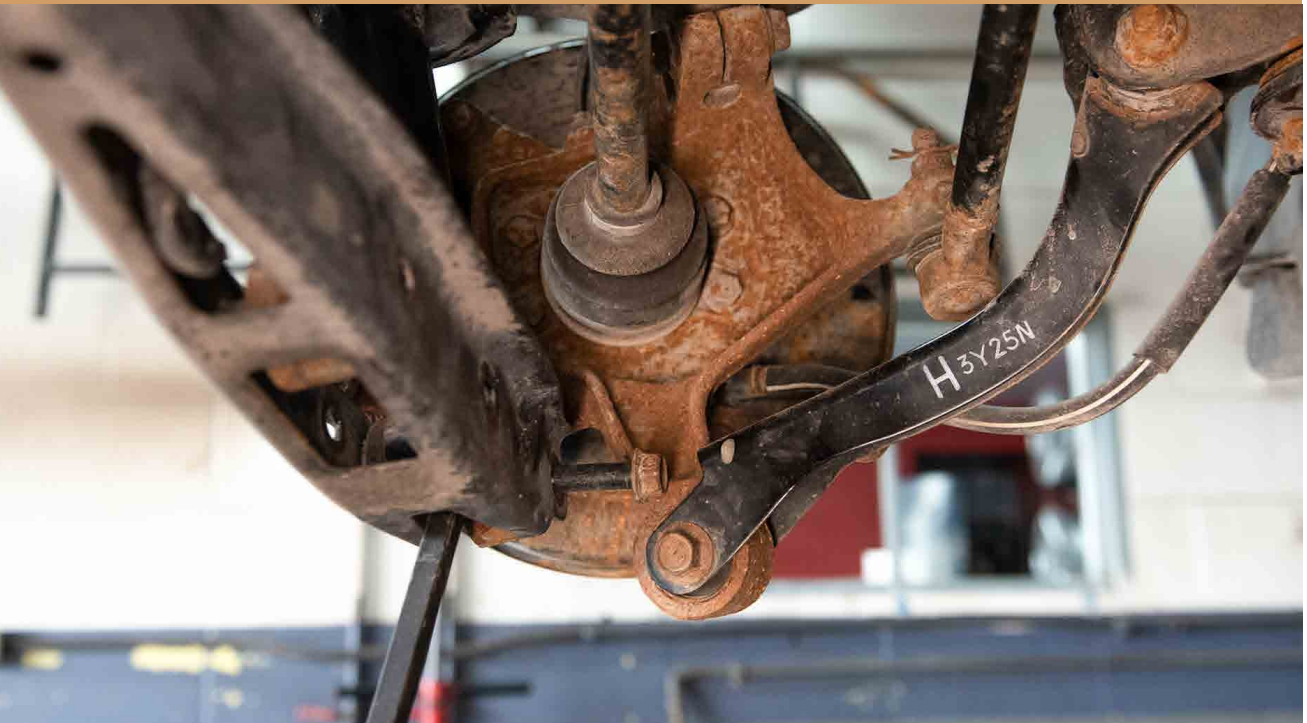


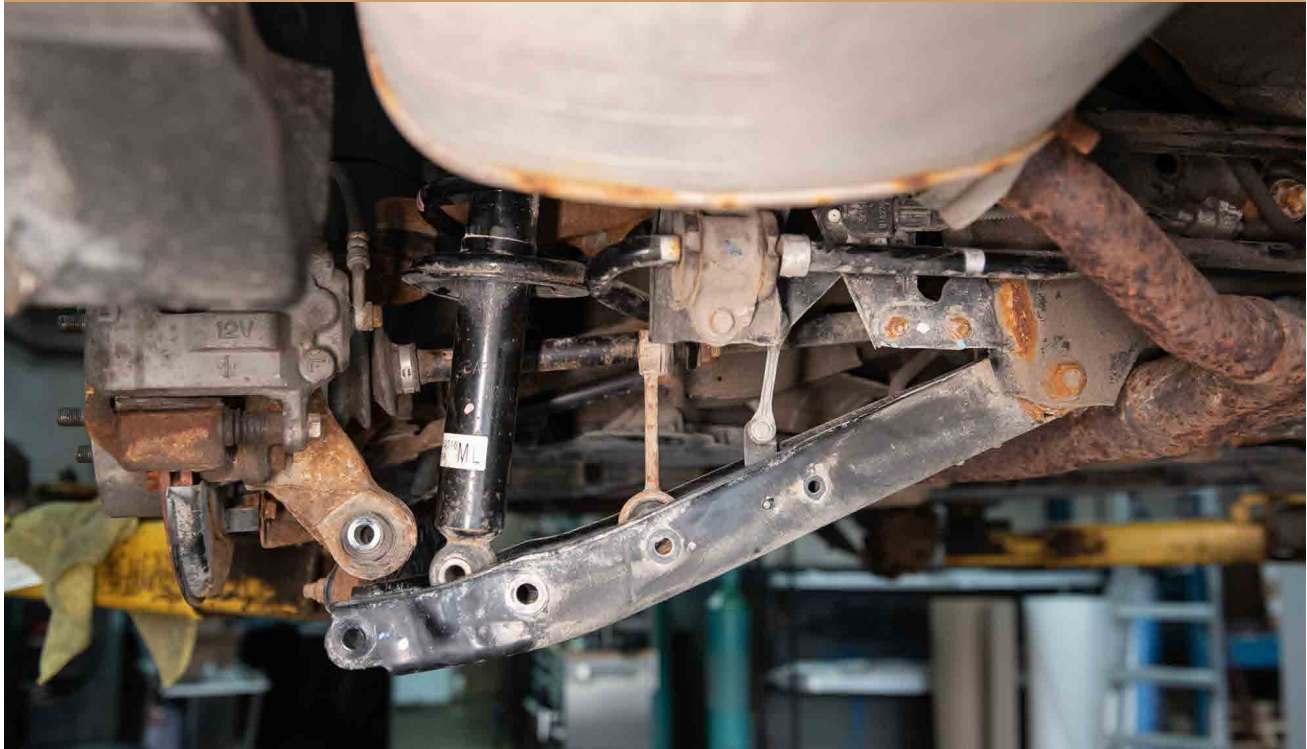
17

REMOVE LOWER KNUCKLE, SHOCK AND SWAY BAR BOLTS



USE A PRY BAR TO HELP GET THE KNUCKLE BOLT OUT





18

REMOVE TRUNK INTERIOR





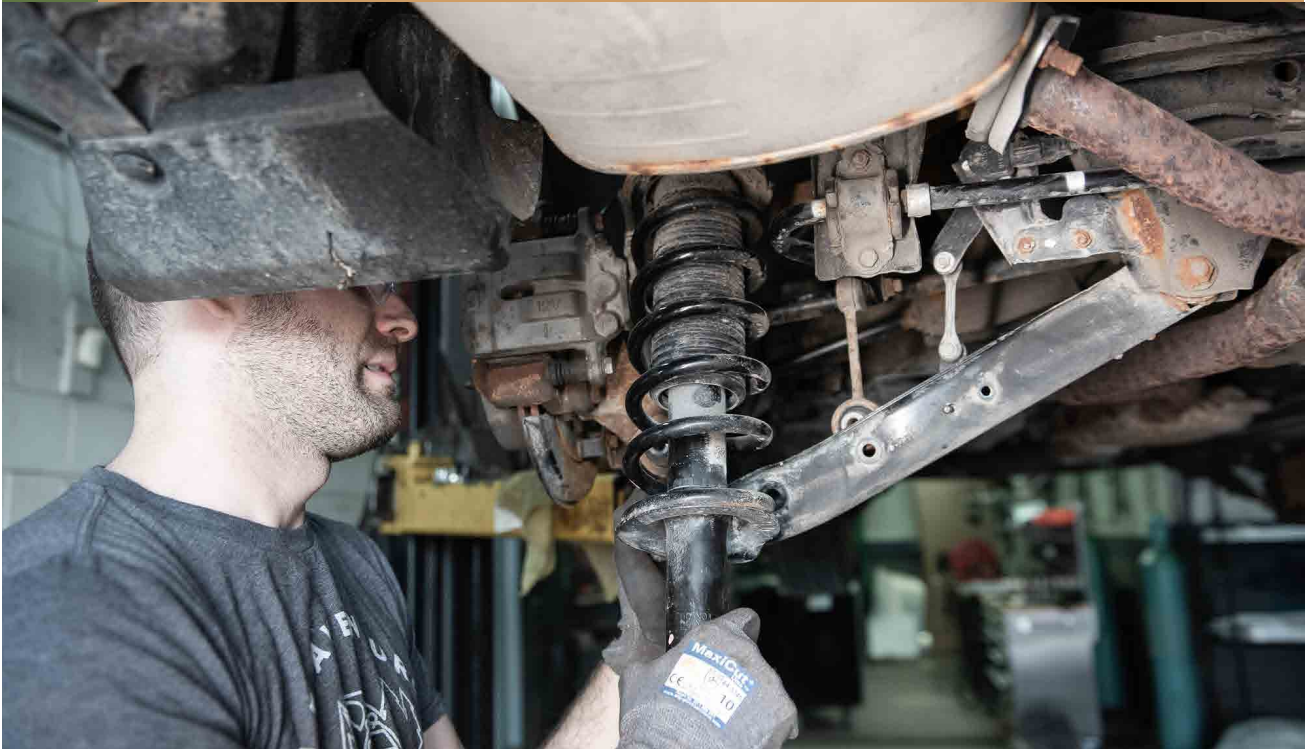
19

REMOVE REAR STRUT NUTS



20

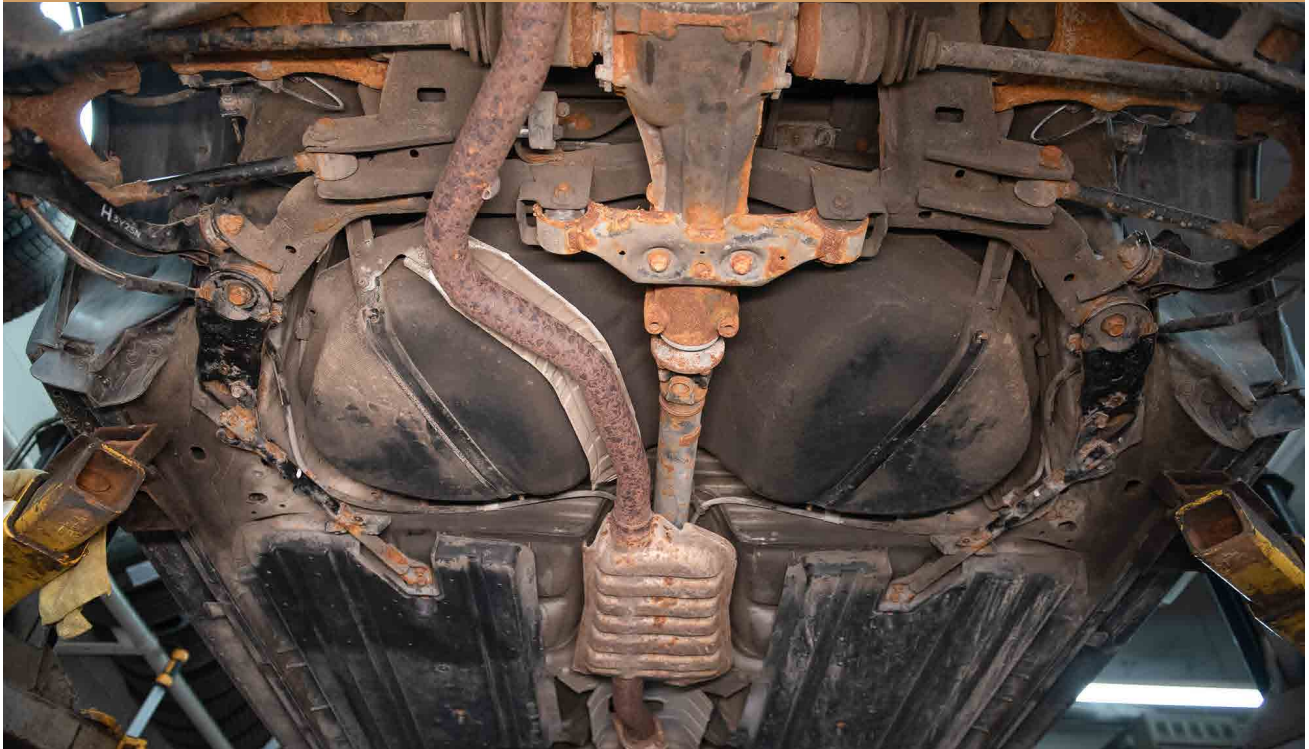
REMOVE REAR SUSPENSION ASSEMBLY



21

REMOVE PLASTIC GAS TANK COVERS

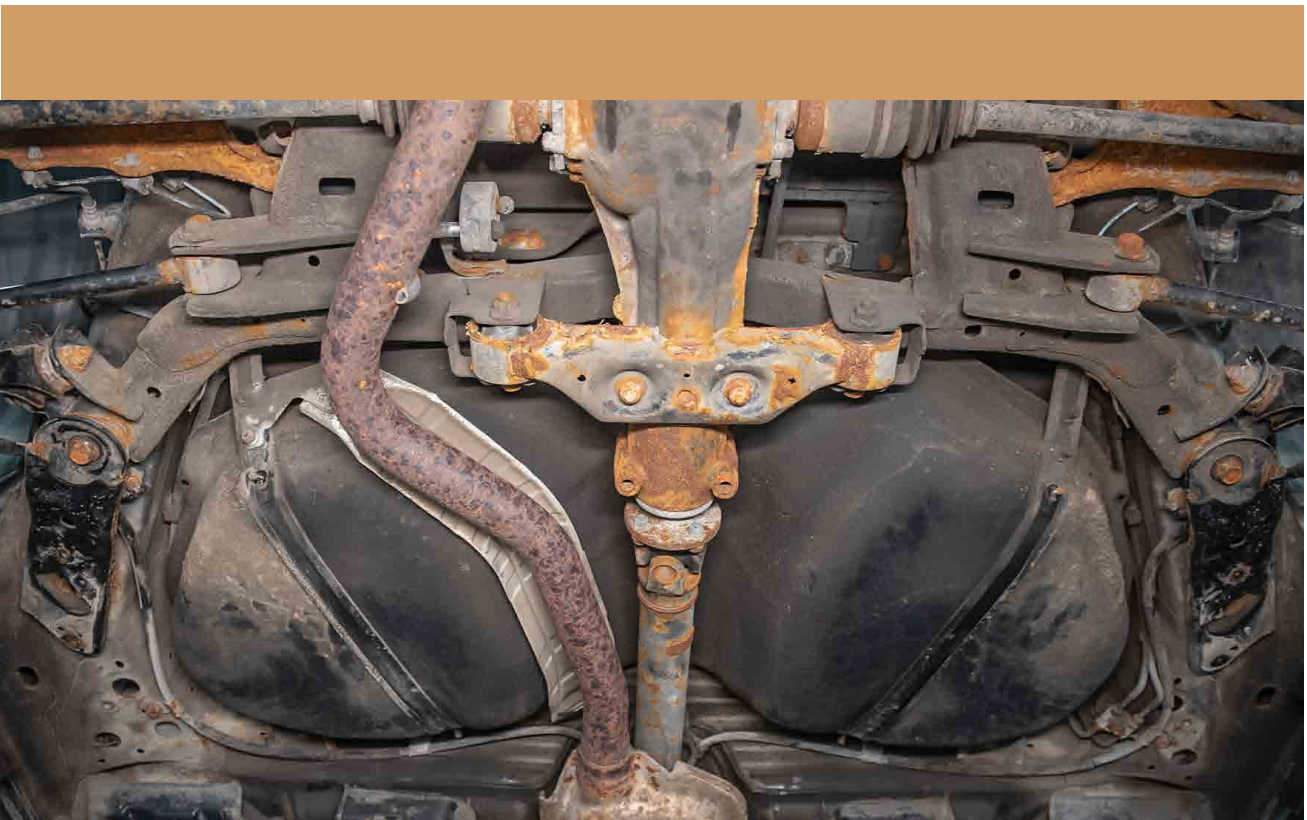




22

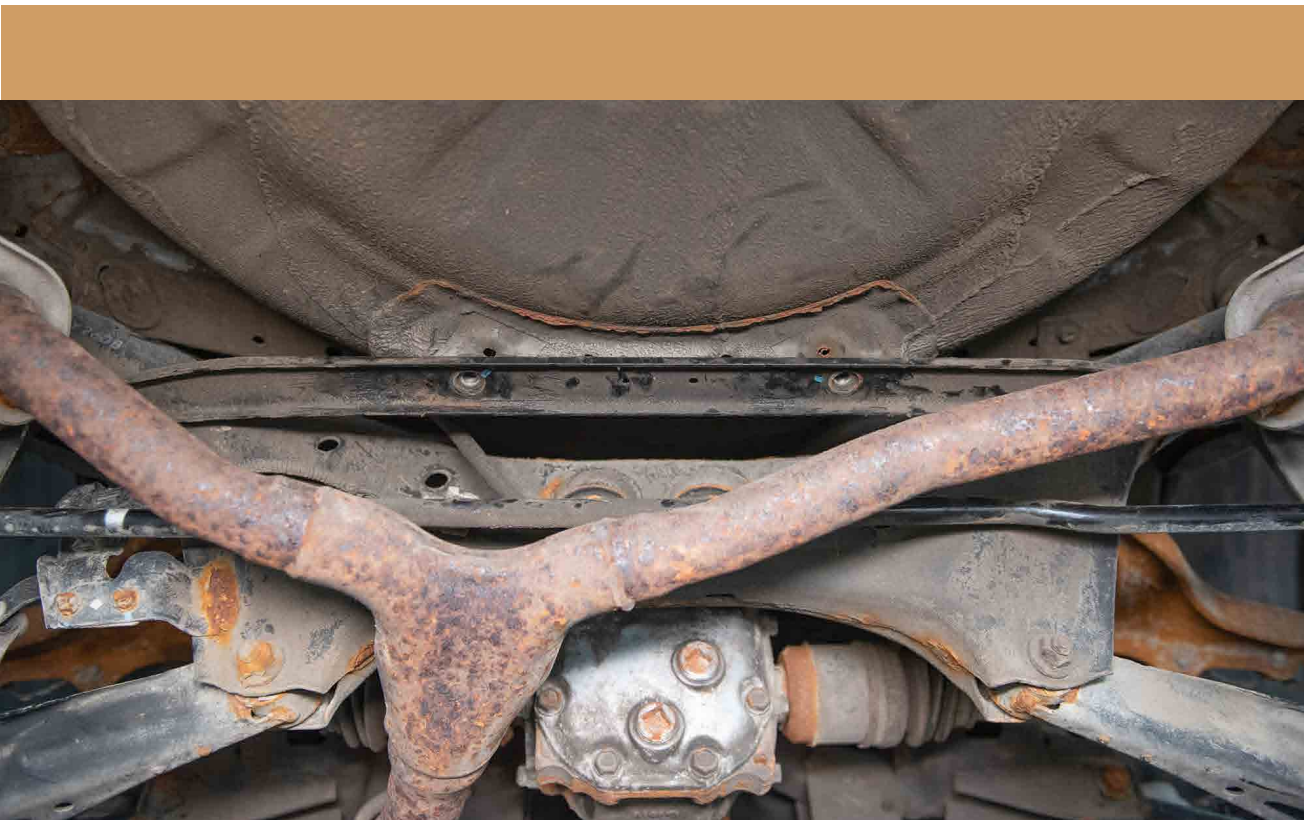
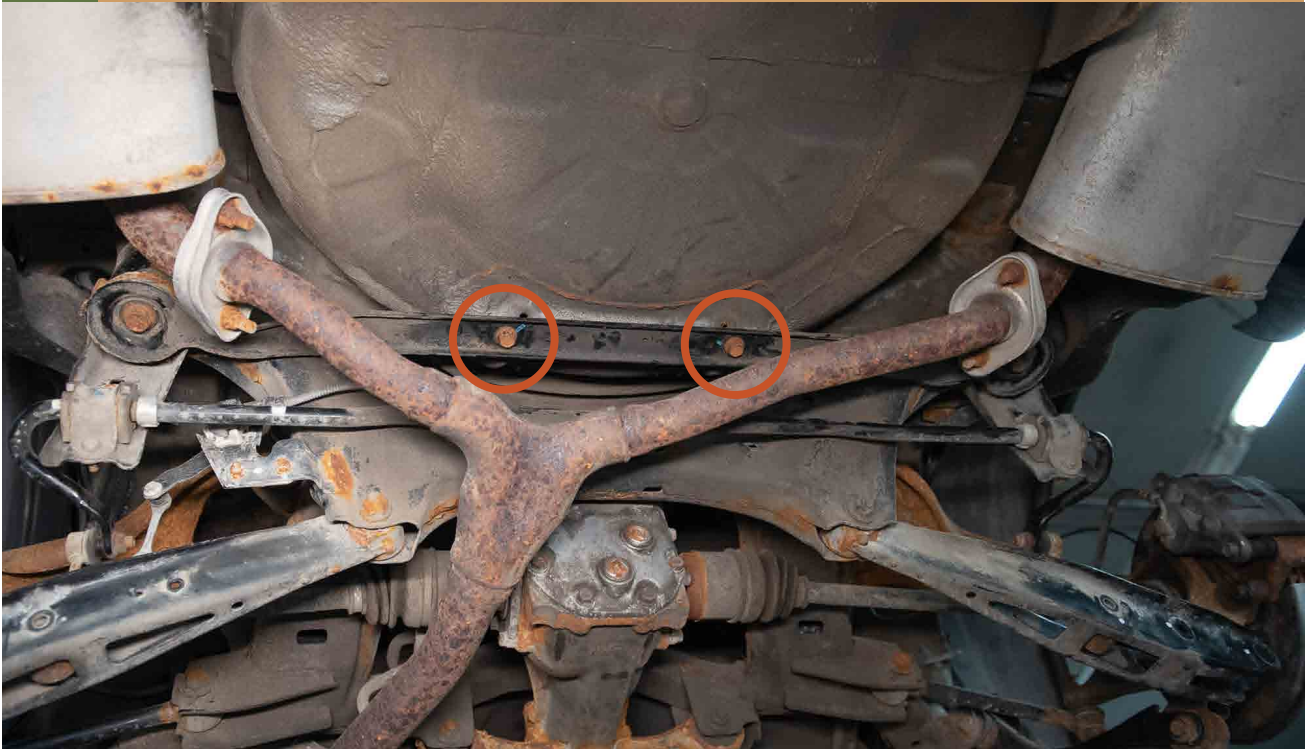
REMOVE BOLTS ON REAR SUB FRAME SUPPORT BRACKET





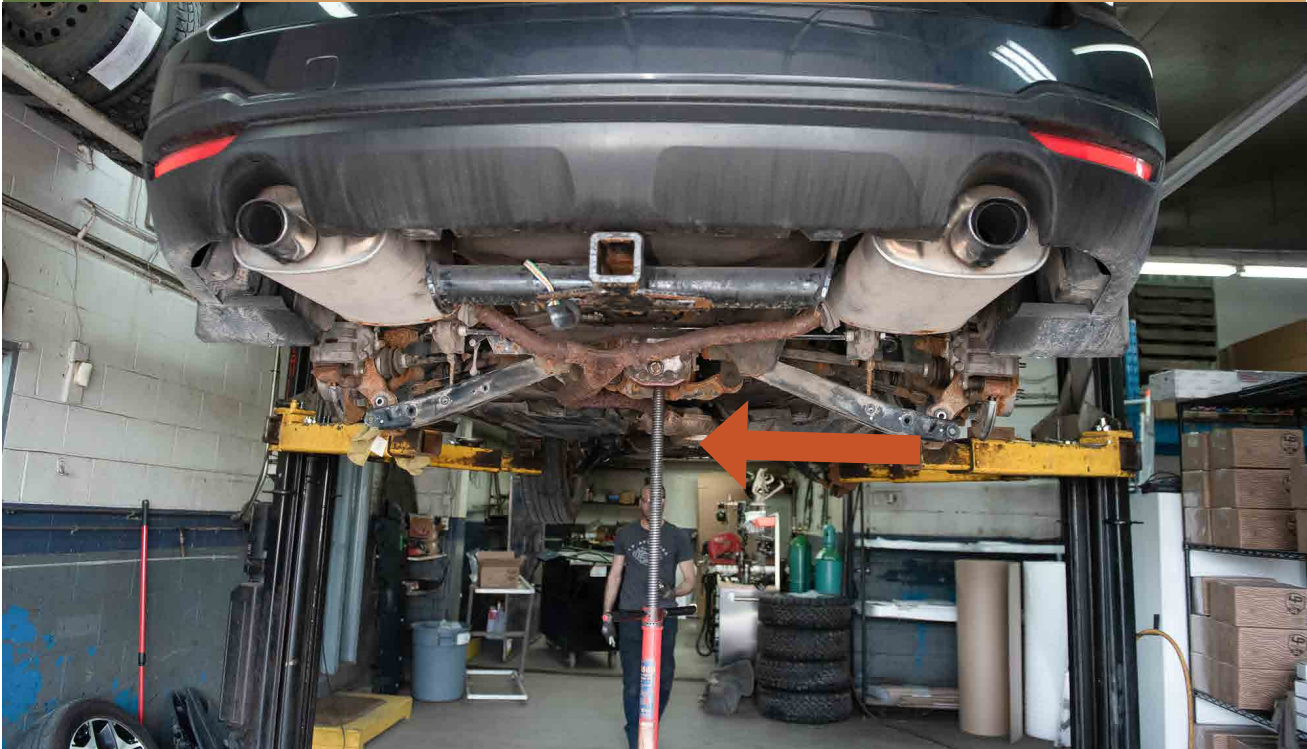
23

REMOVE 2 REAR SUB FRAME SUPPORT BOLTS



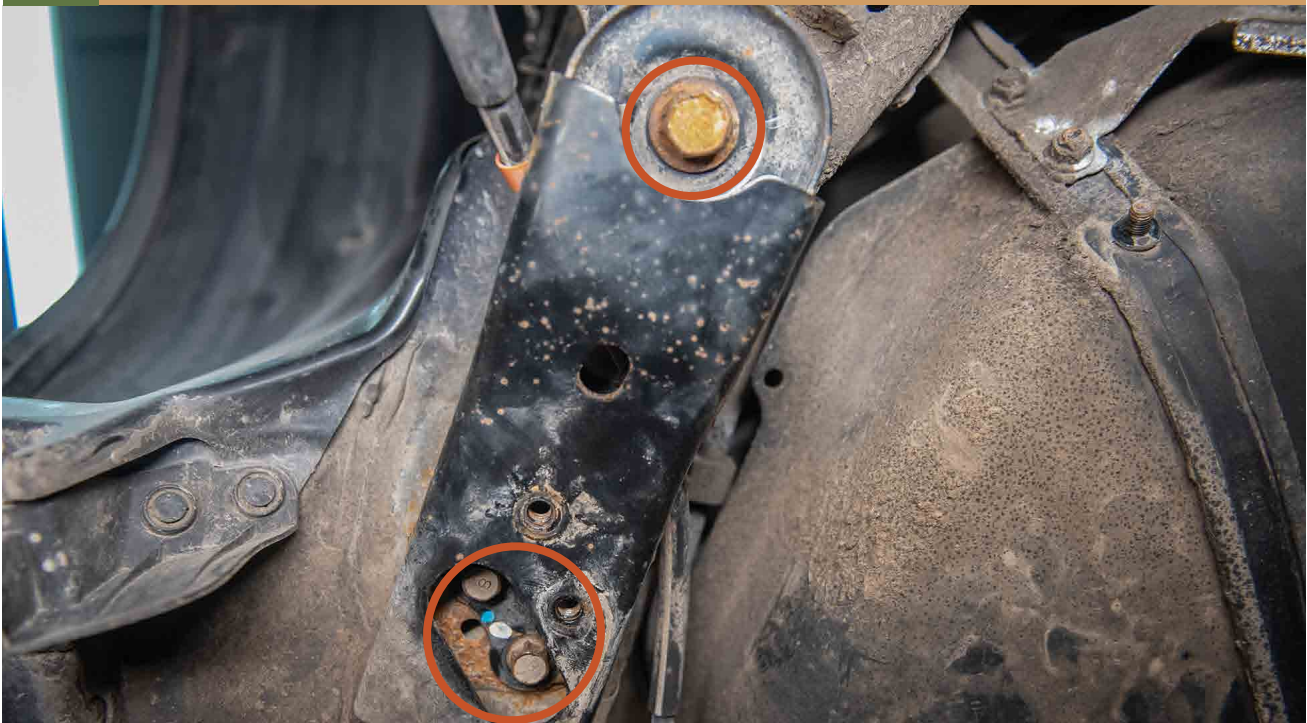
24

PLACE A TRANSMISSION JACK UNDER THE REAR DIFF



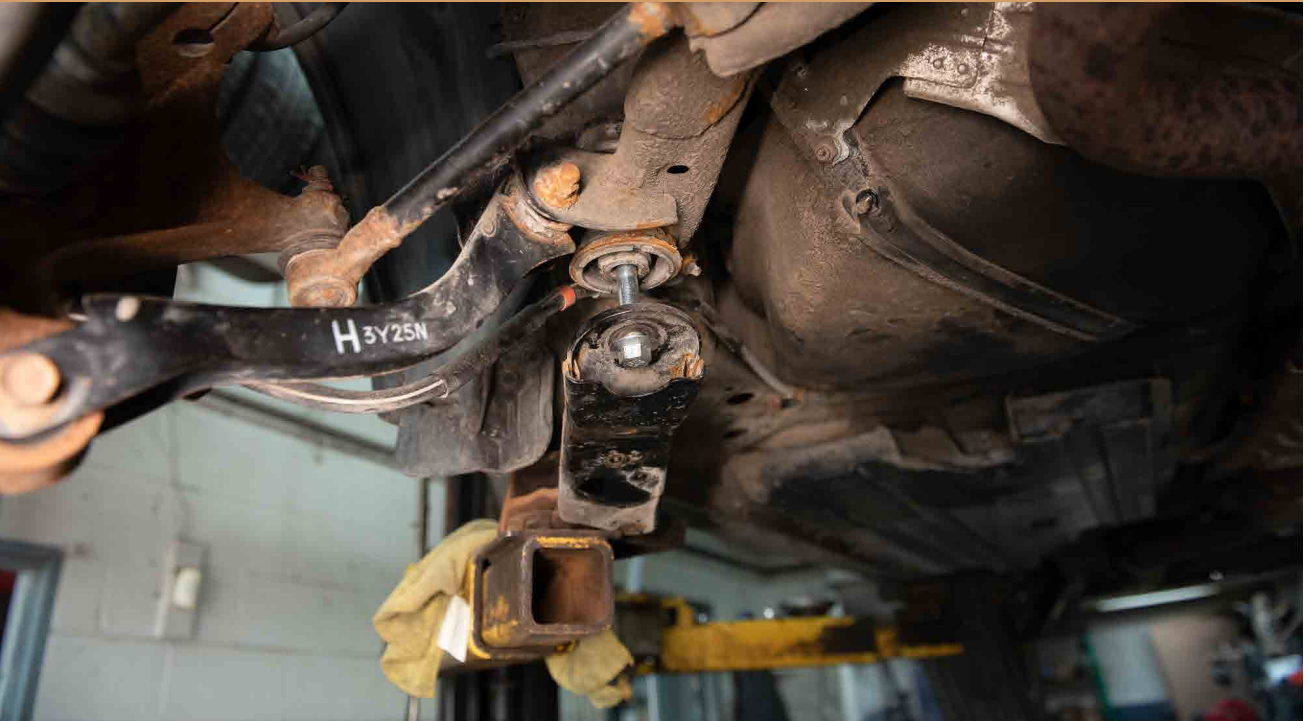
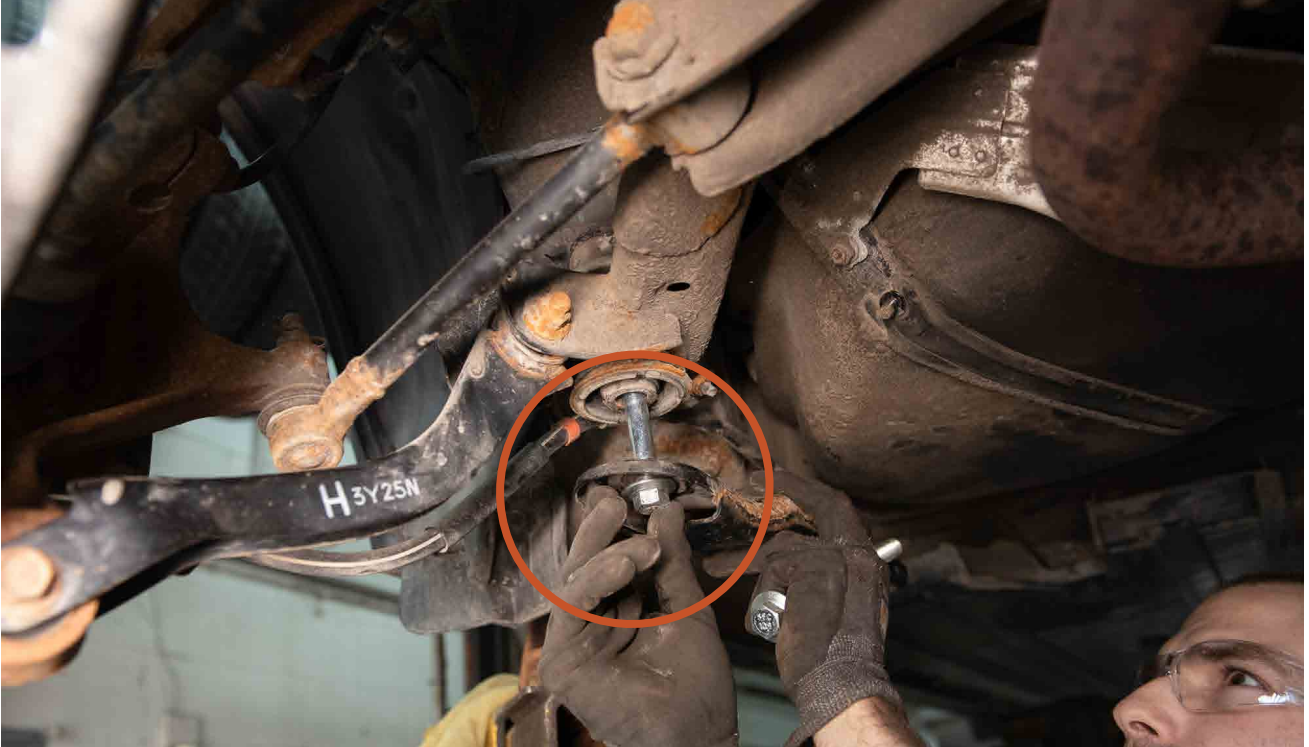
25

REMOVE SUB FRAME SUPPORT BOLTS



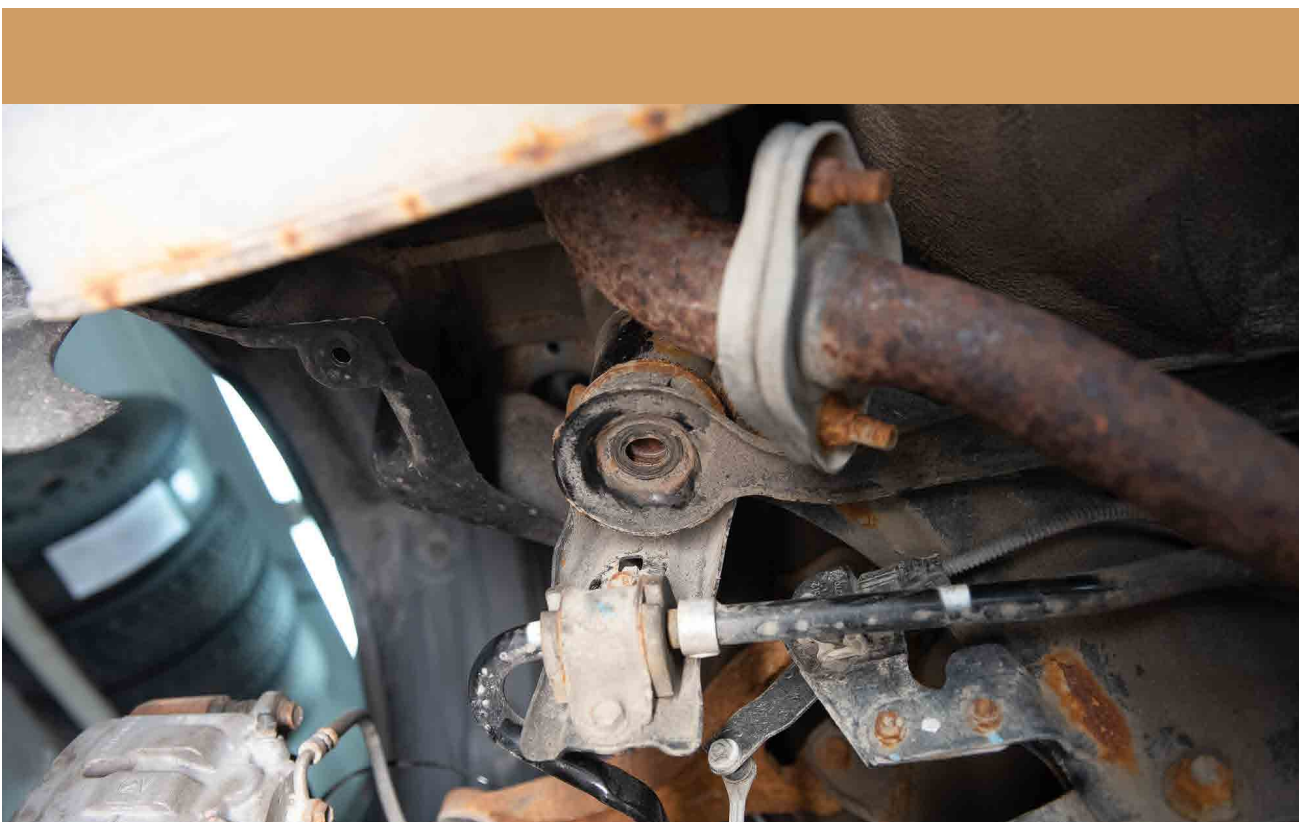
27

TEMPORARILY INSTALL THE SUPPLIED SUB FRAME BOLTS TO KEEP THE SUB FRAME IN PLACE



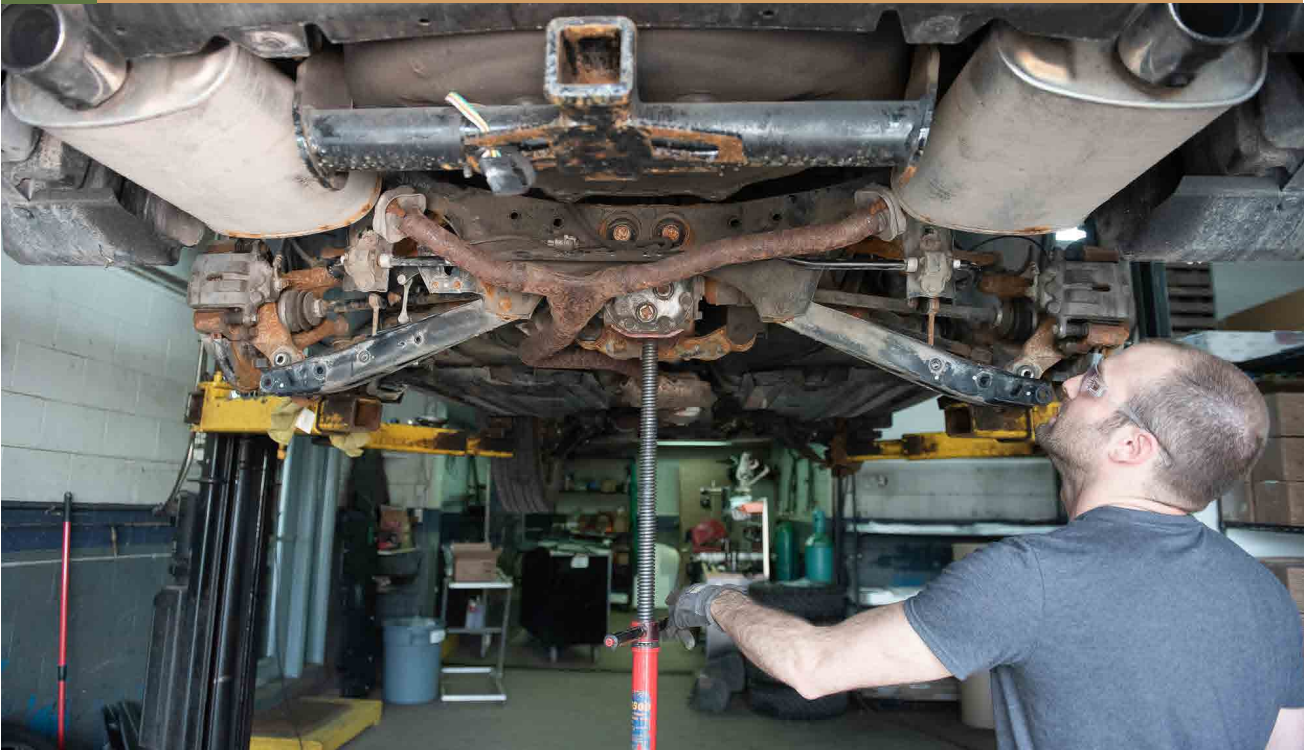
28

REMOVE SUB FRAME BOLTS



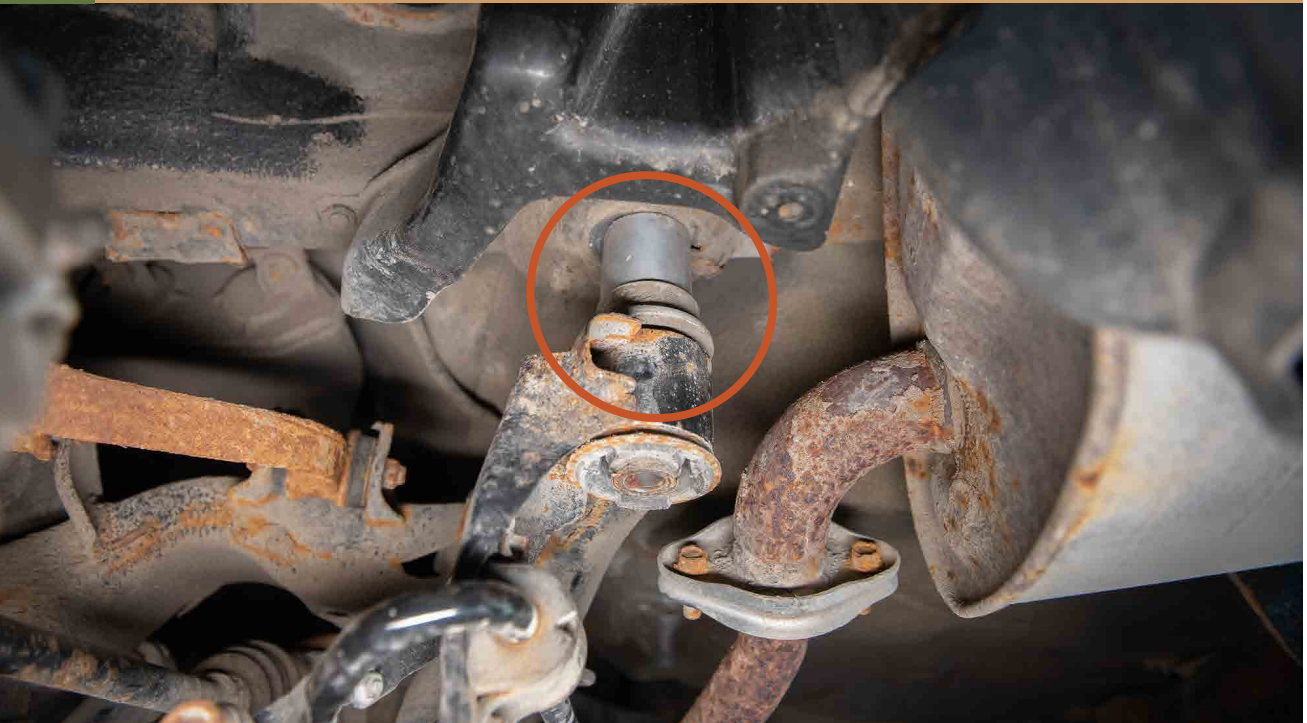
29

LOWER THE SUB FRAME



30

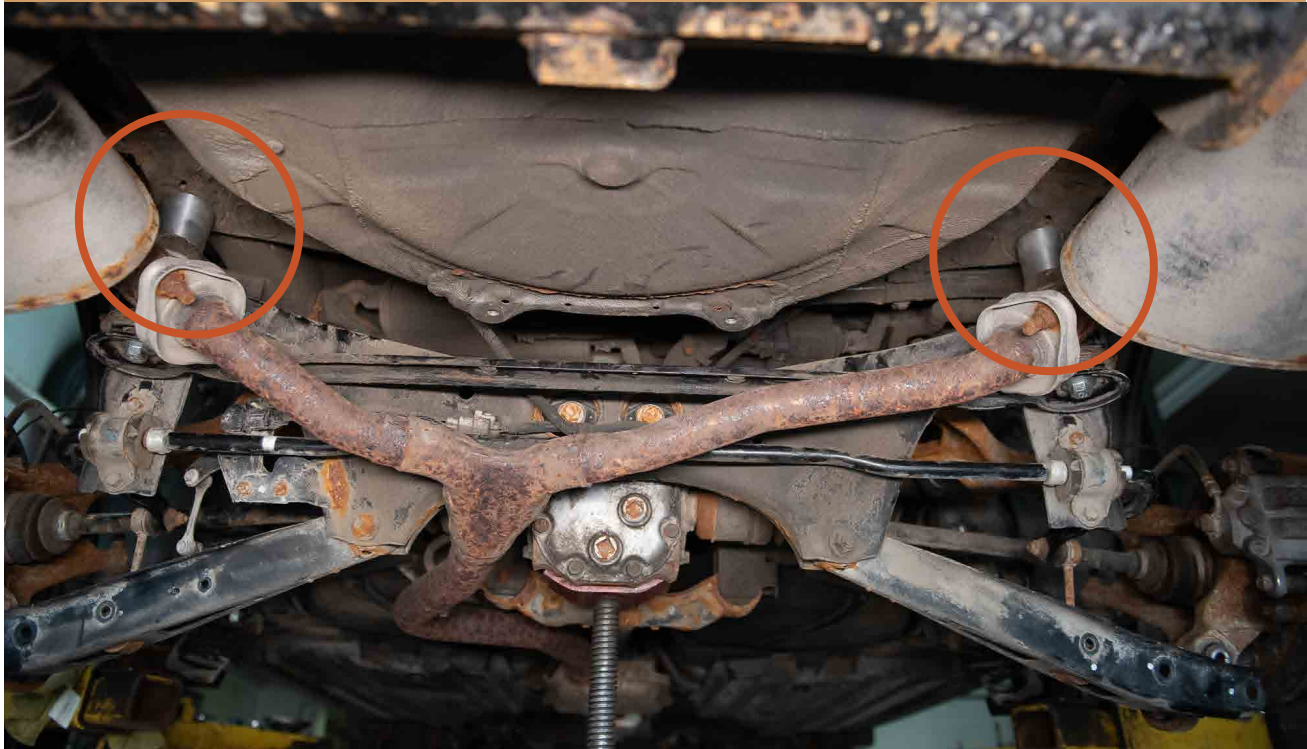
INSTALL THE SUB FRAME SPACER



31

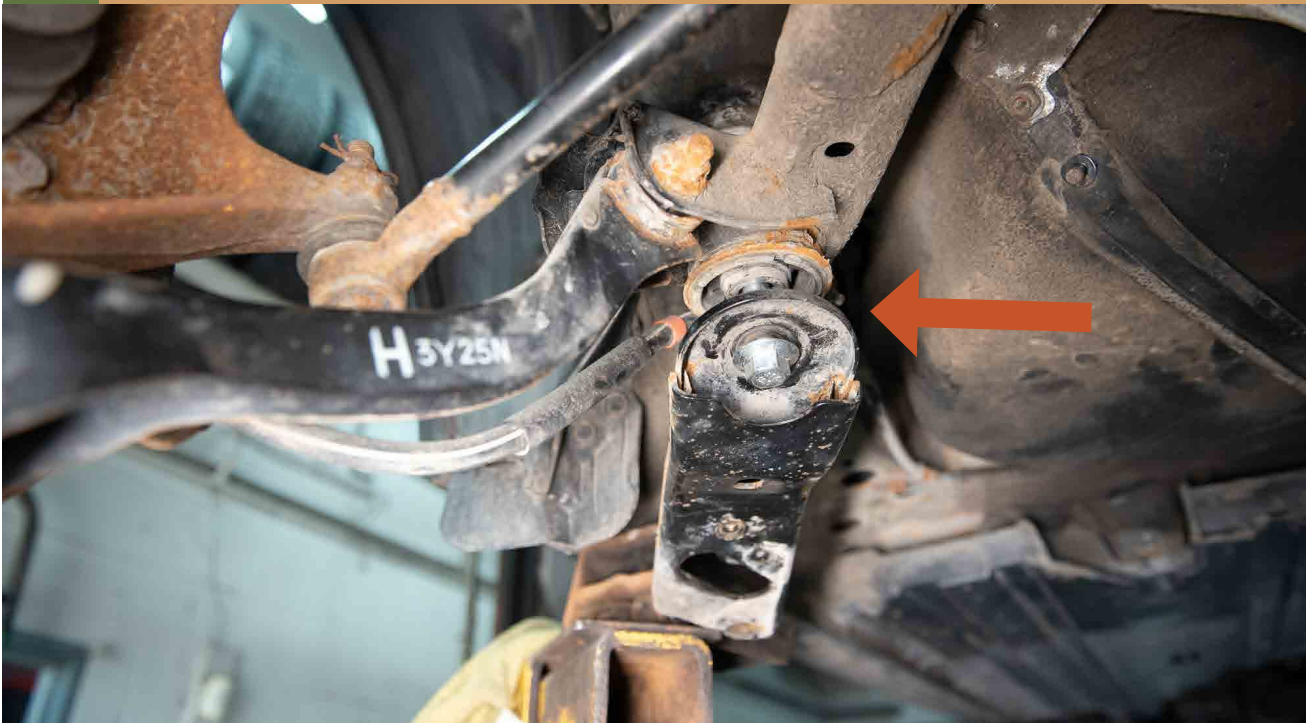
INSTALL THE INCLUDED SUB FRAME BOLTS





32

REMOVE THE TEMPORARY BOLT



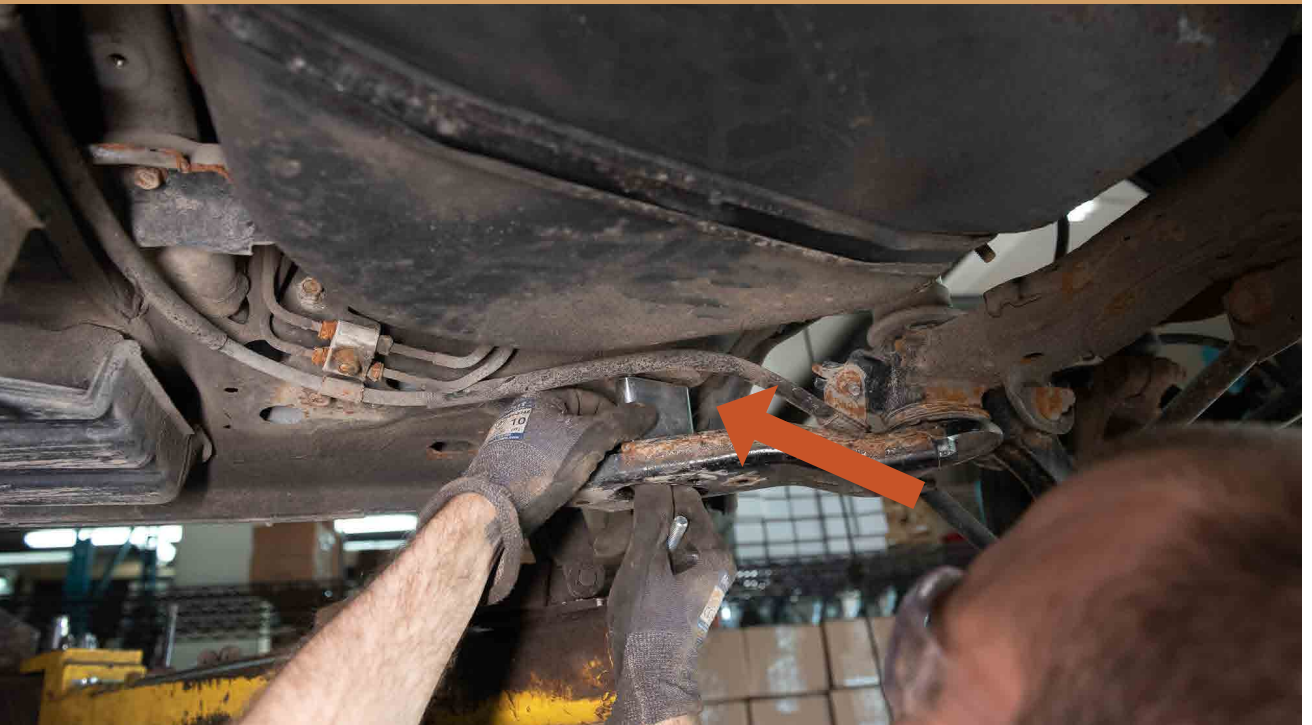
33

INSTALL SUB FRAME SPACERS



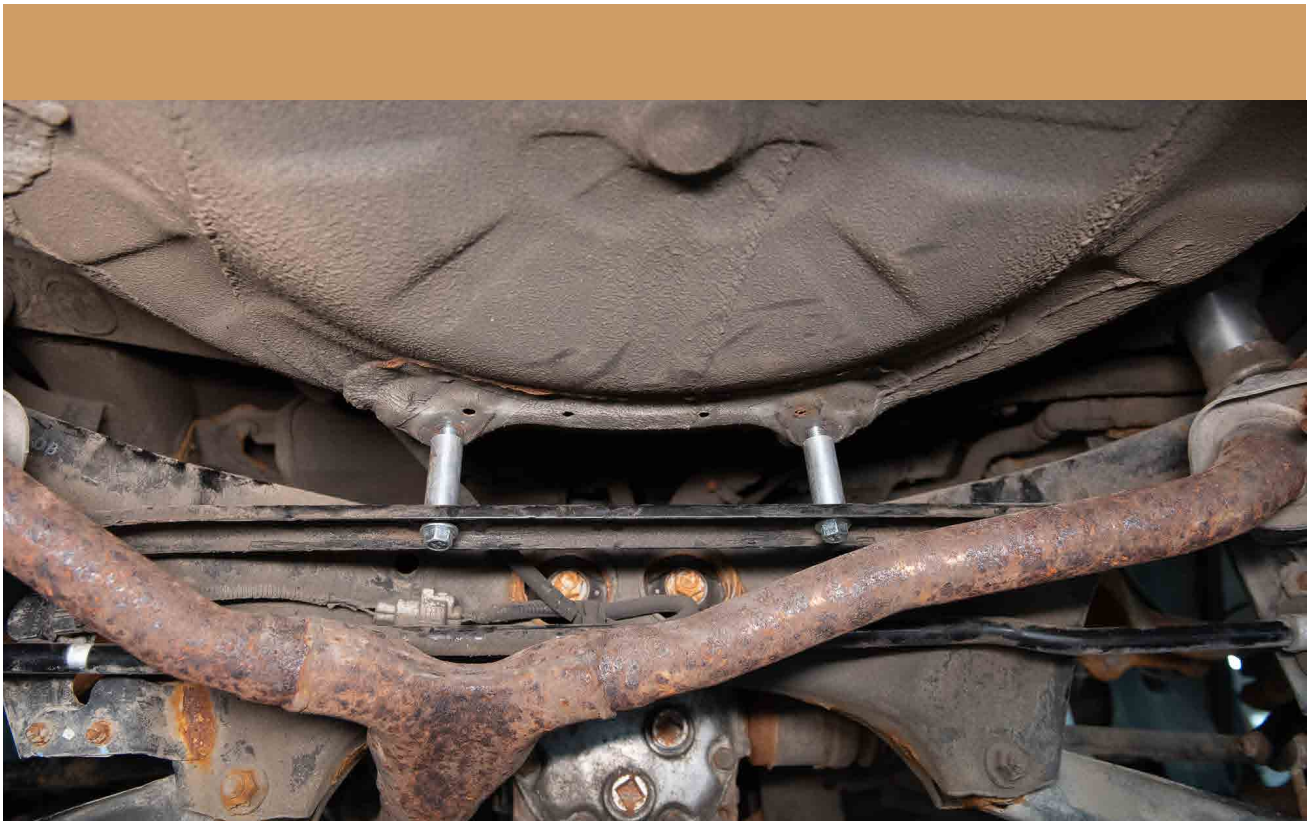
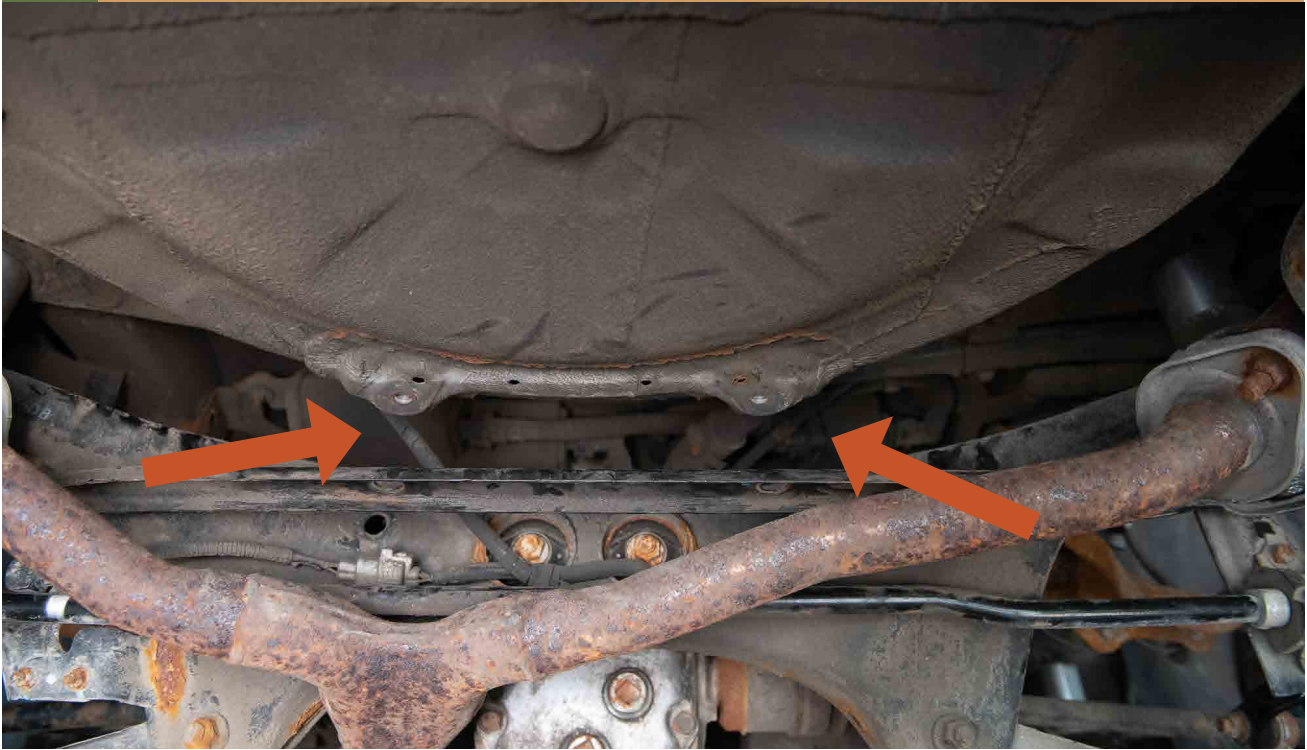
34

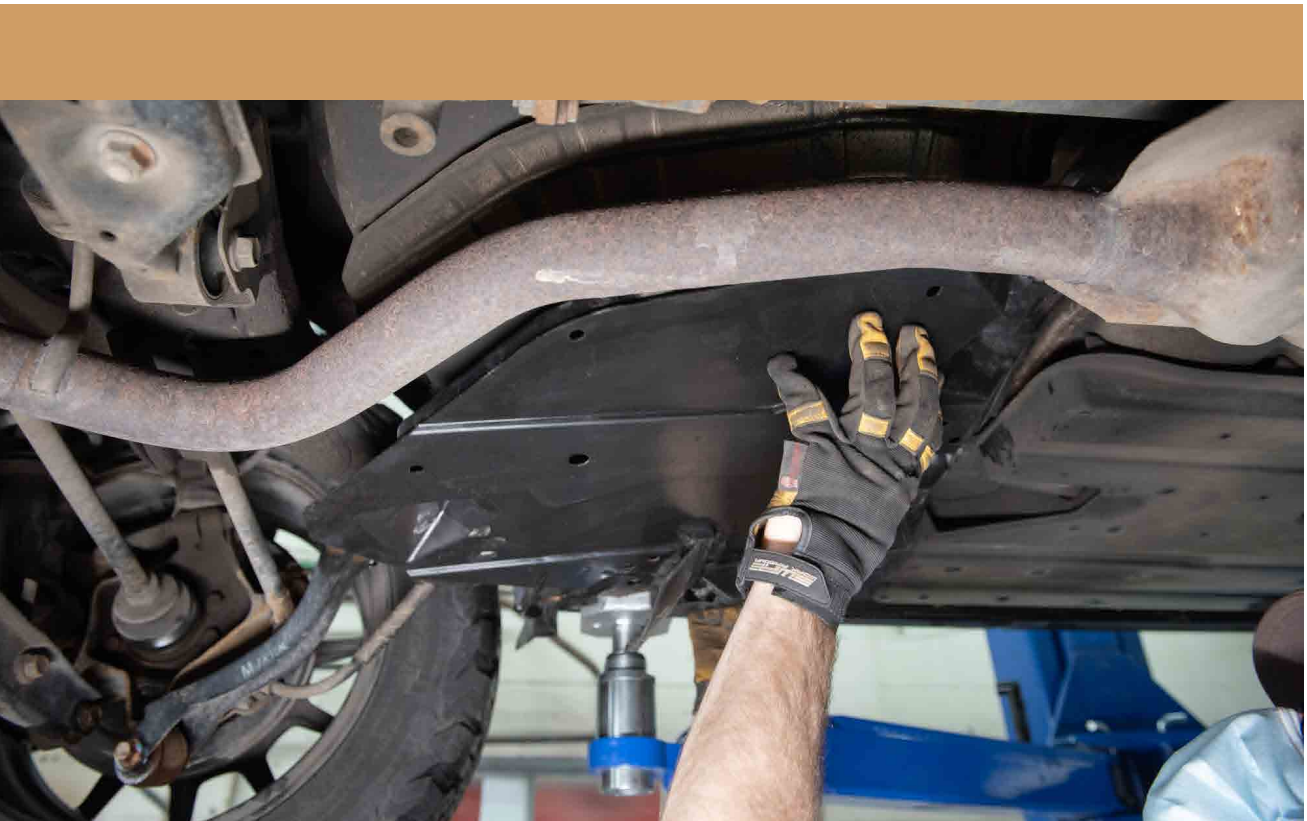
INSTALL SUB FRAME SUPPORT BRACKET SPACERS



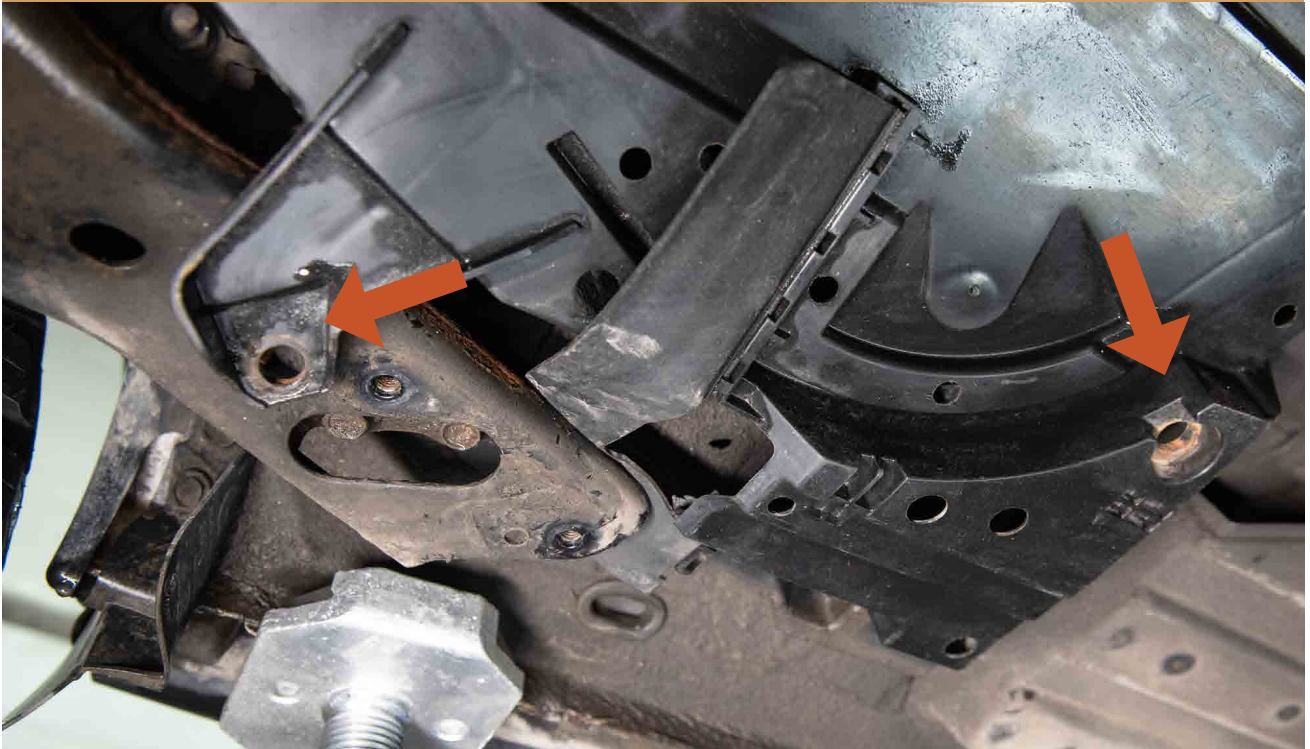
35

INSTALL SUB FRAME SUPPORT BRACKET SPACERS





THESE MOUNTING HOLE WILL NO LONGER BE NEEDED

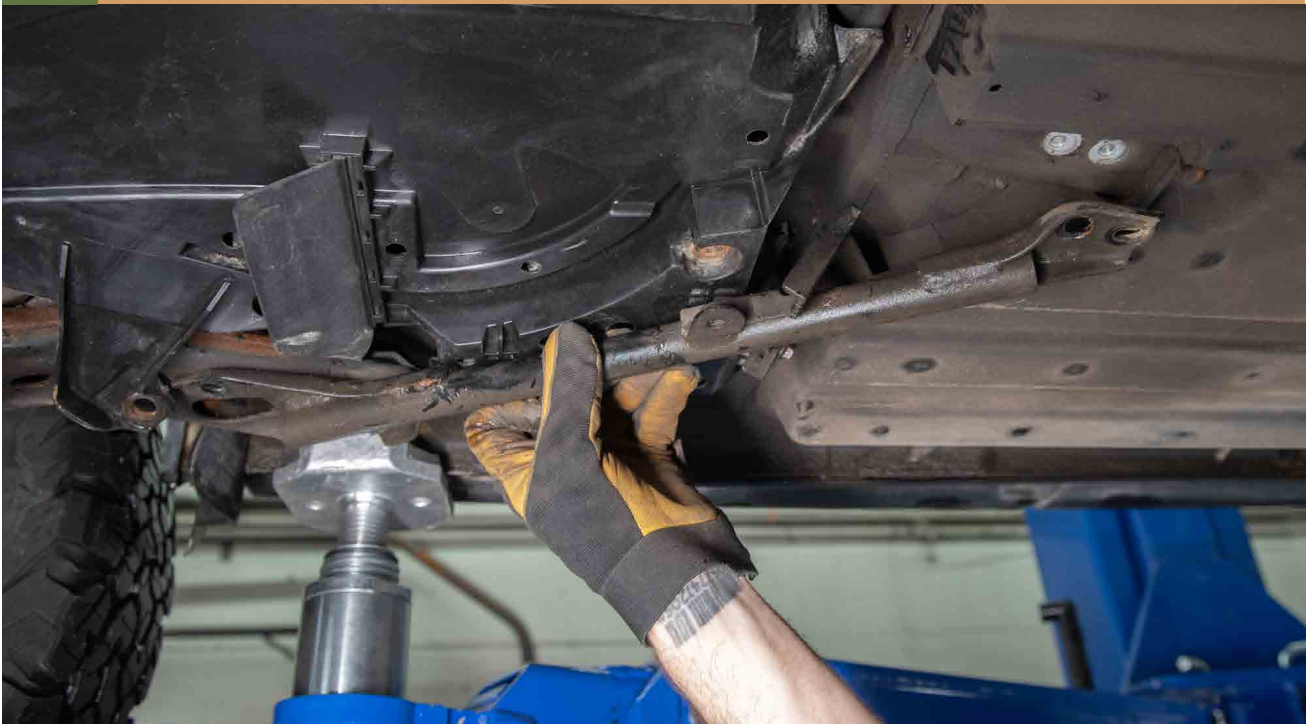


YOU CAN TRIM THIS TAB IF DESIRED



37

RE INSTALL SUB FRAME SUPPORT BAR

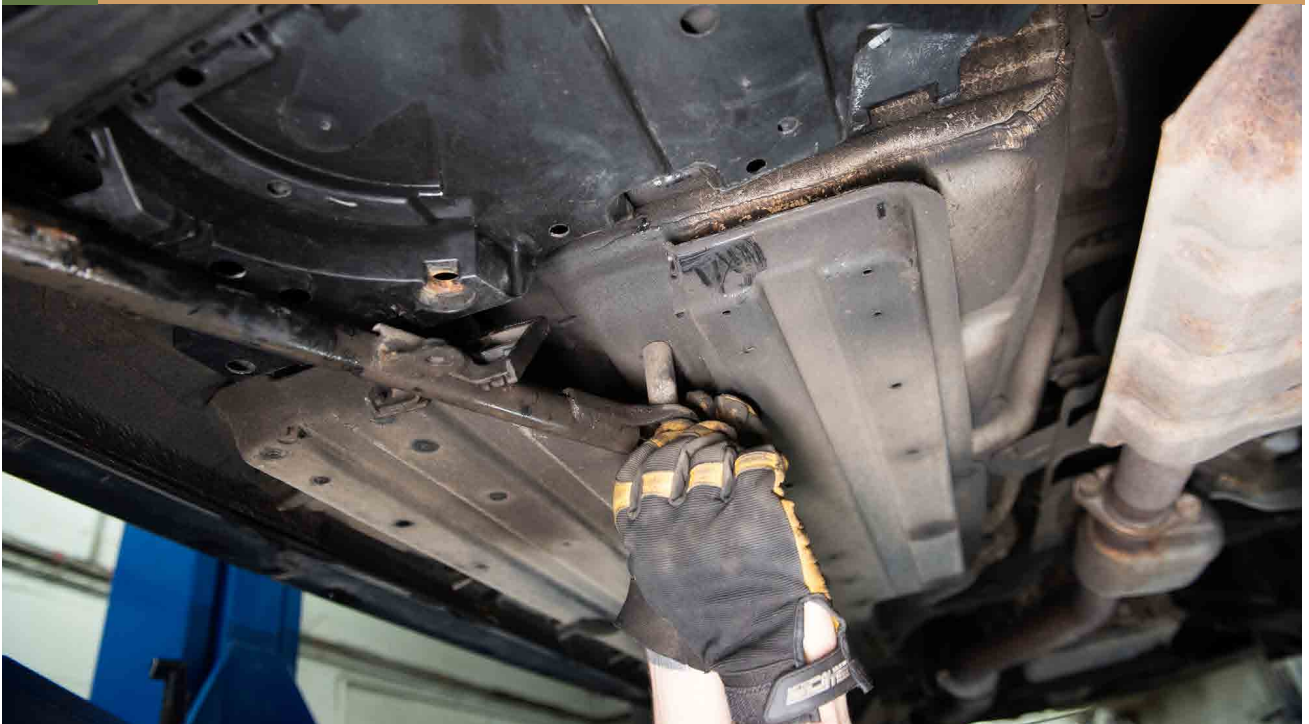


SNUG UP BUT DO NOT FULLY TIGHTEN BOLTS



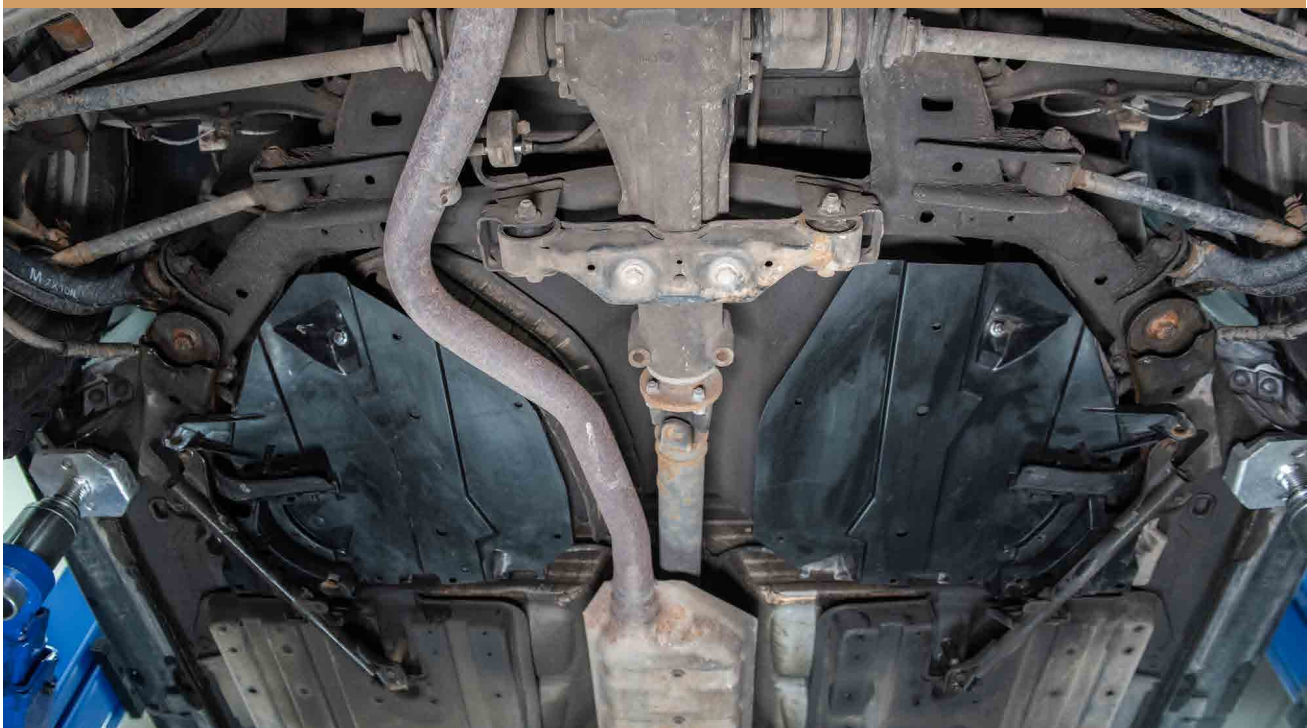
38

INSTALL SUB FRAME SUPPORT BAR SPACERS





NOW TIGHTEN ALL THE BOLTS



39

INSTALL REAR TOP PLATE SPACERS

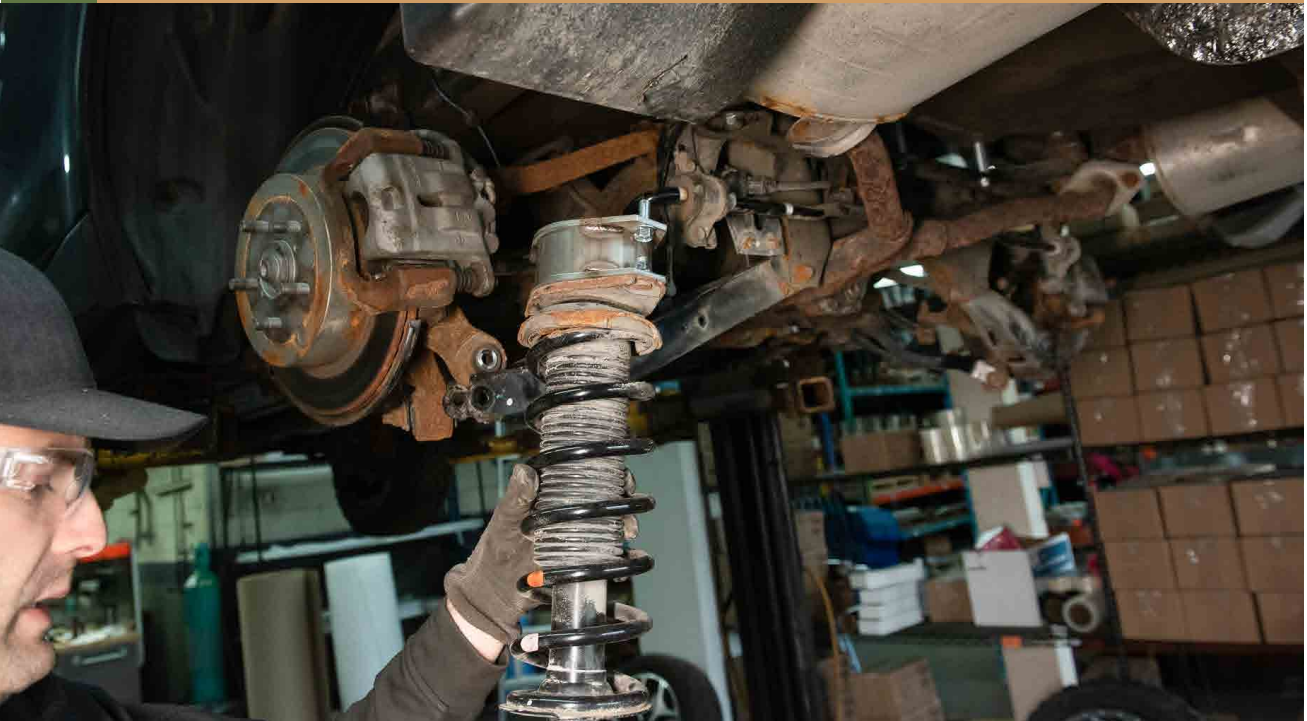


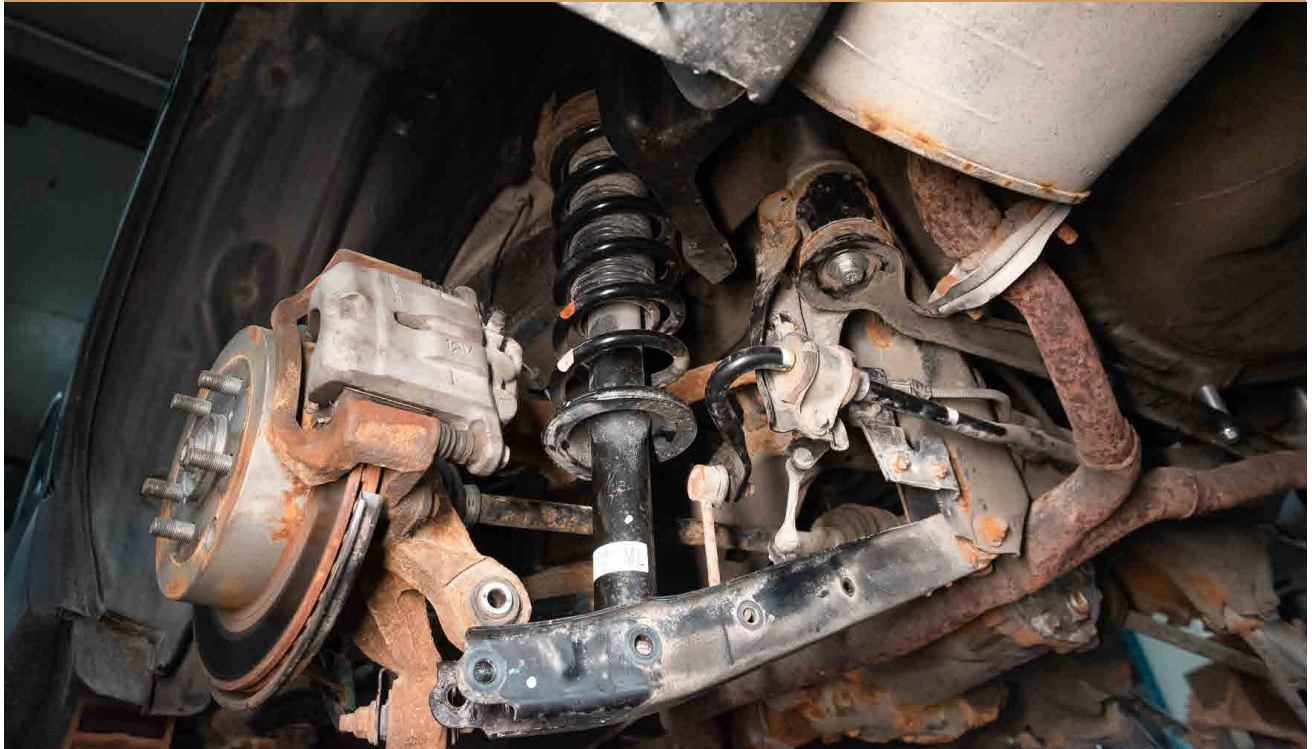
USE A PRY BAR TO SUPPORT THE STRUT WHILE TIGHTEN-



40

RE INSTALL REAR SUSPENSION ASSEMBLY





41

RE INSTALL TOP PLATE NUTS





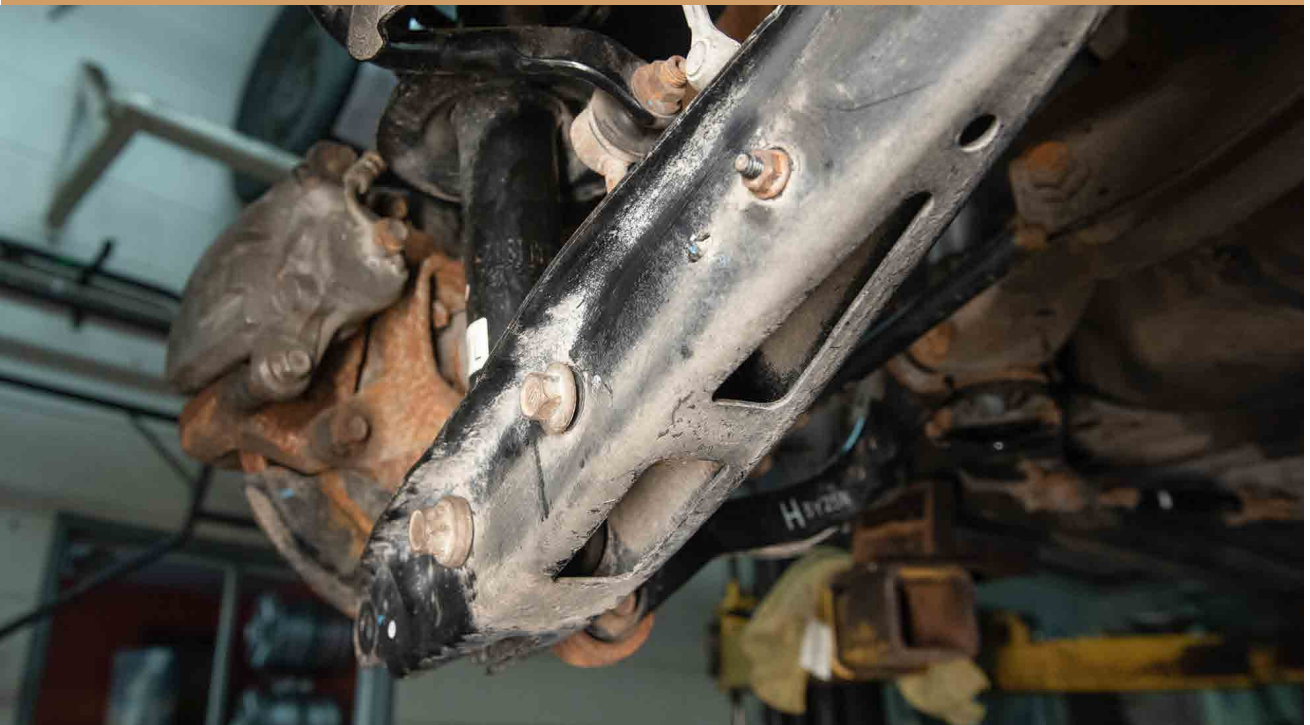
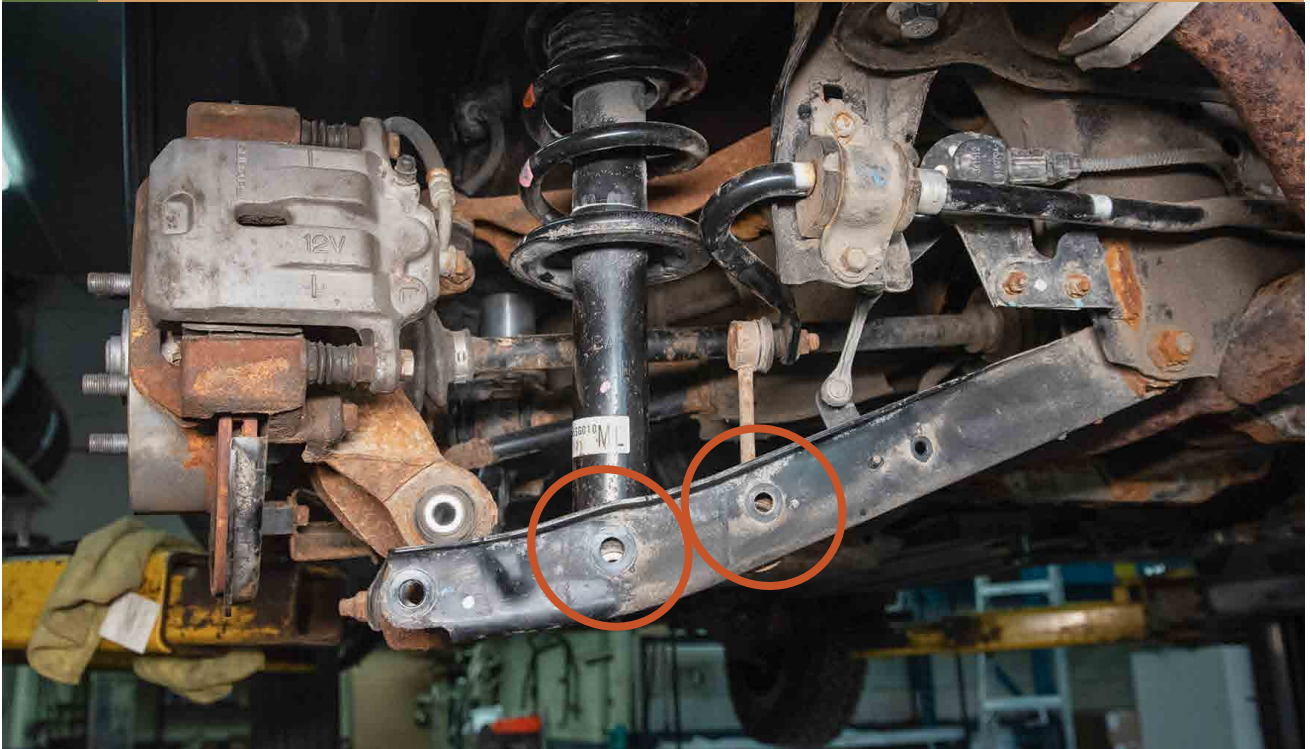
42

RE INSTALL TRUNK INTERIOR



43

RE ATTACH SWAY BAR LINK AND SHOCK



44

TO MAKE KNUCKLE INSTALLATION EASIER INSERT THE BOLT FROM BACK TO FRONT



45

INSTALL BRAKE LINE BRACKET SPACER



46

INSTALL SUPPLIED EXHAUST HANGERS



INSTALLATION COMPLETE!



▼
NOTES:

****Tighten all the bolts to the manufacturer's specifications with a Torque Wrench****

**Double check your work.
Reinstall the wheels and be sure to tighten
the nuts with a torque wrench.**

Wheel alignment is required after installation.

**Products warnings:
<https://lpaventure.com/pages/products-warnings>**

**Limited product warranty:
<https://lpaventure.com/pages/limited-prod->**



**You have completed the installation.
Thank you for your interest
in our products.**

**For all requests, information or
assistance: Contact our team
by phone at
1 (866) 562-1316**

**We are available Monday to Friday
Between 8AM and 5PM (EST).**

**Or by email at :
SALES@LPAVENTURE.COM
WWW.LPAVENTURE.COM**

NOW, ENJOY THE RIDE!