



-INSTALLATION- INSTRUCTIONS



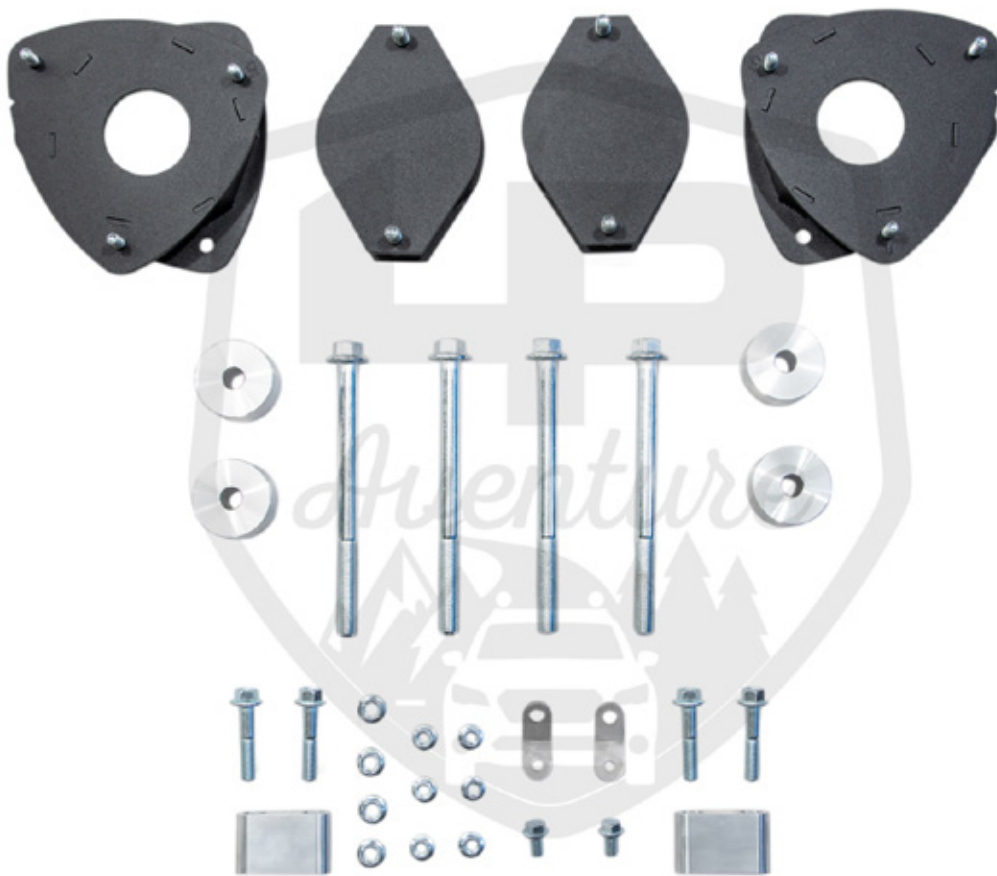
LP AVENTURE LIFT KIT



SUBARU IMPREZA 2012-2016

CONGRATULATIONS FOR YOUR NEW LP AVENTURE LIFT KIT!

If you have any question or need assistance
during the installation please
contact our team. You
can find the information
on the last
page.



IN
THE
BOX



IN THE BAGS

1



2



3



4





NECESSARY TOOLS

1. - We recommend the use of a lift
2. - Jack stand to support the sub-frame
3. - Ratchet
4. -12mm Socket
5. -14mm Socket
6. -17mm Socket
7. -18mm Socket
8. -19mm Socket
9. - 22mm Socket
10. -10mm Wrench
11. -12mm Wrench
12. - 14mm Wrench
13. -17mm Wrench

1

REMOVE WHEELS



2

REMOVE TOP PLATE NUTS







3

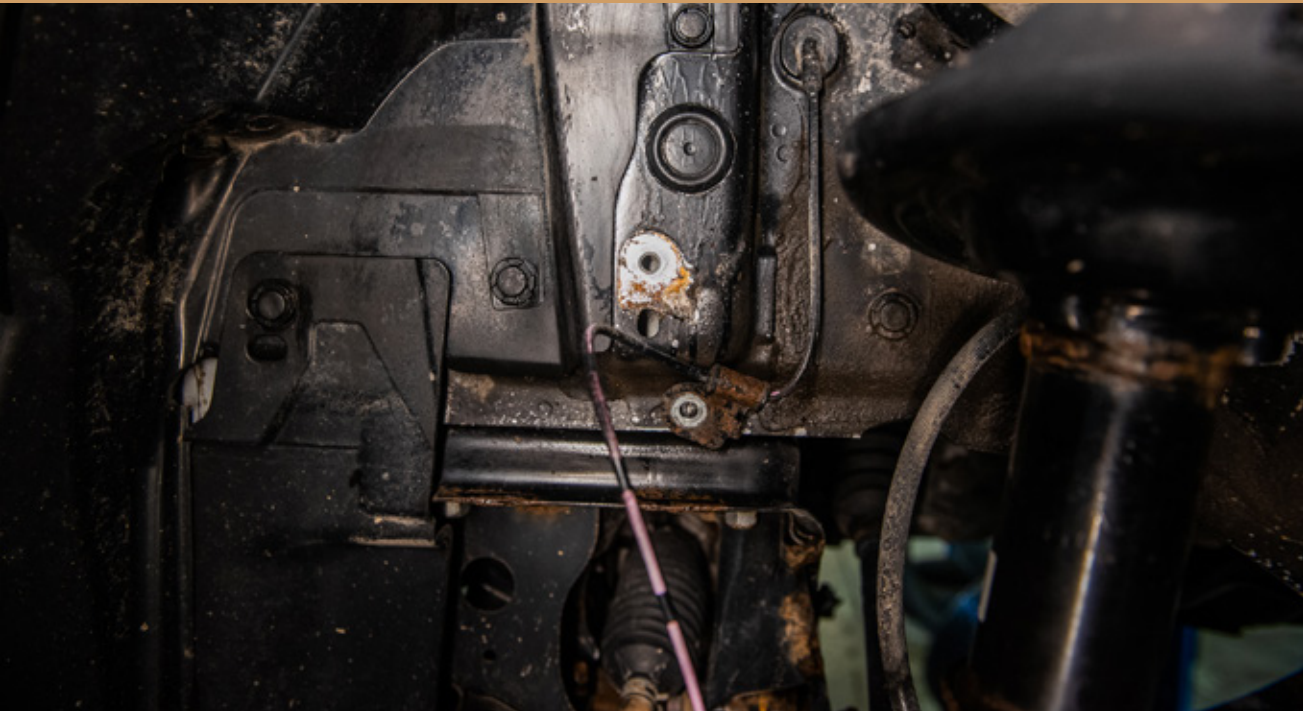
REMOVE ABS SENSOR





4

REMOVE ABS SENSOR BRACKET



5

REMOVE BRAKE LINE BRACKET





6

UNBOLT KNUCKLE





7

REMOVE SHOCK ASSEMBLY



8

INSTALL TOP PLATE SPACERS



USE A SCREW DRIVER OR PRY BAR TO HELP HOLD THE SPACER IN PLACE WHILE TIGHTENING



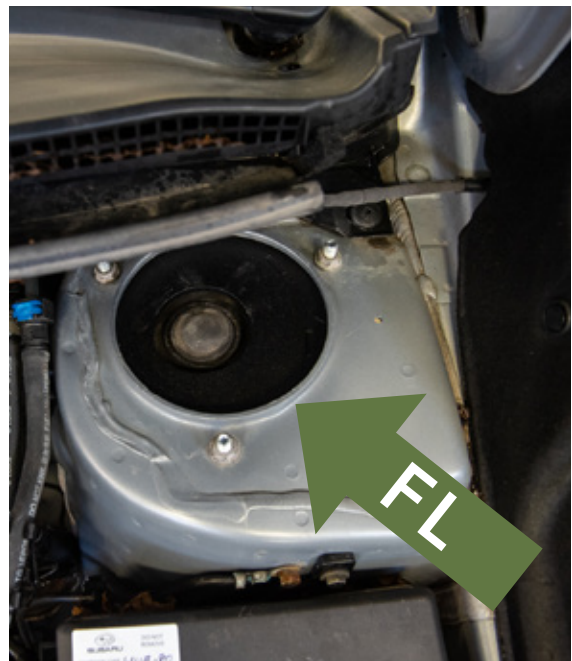
9

RE INSTALL SHOCK ASSEMBLY. MAKE SURE YOU INSTALL THE CORRECT STRUTS ON THE CORRECT SIDES OF THE VEHICLE



FRONT RIGHT

FRONT LEFT



10

RE INSTALL LOWER STRUT BOLTS



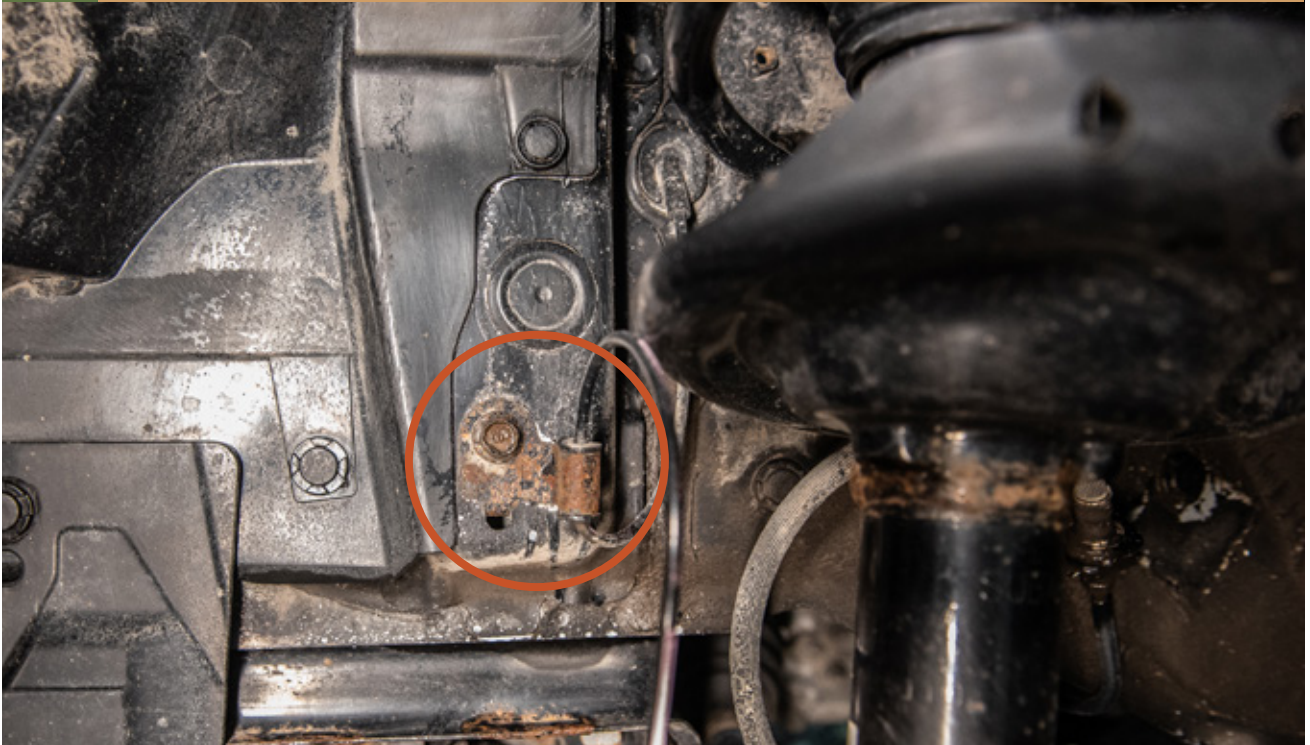
11

RE CLIP ABS SENSOR



12

RE INSTALL ABS LINE BRACKET



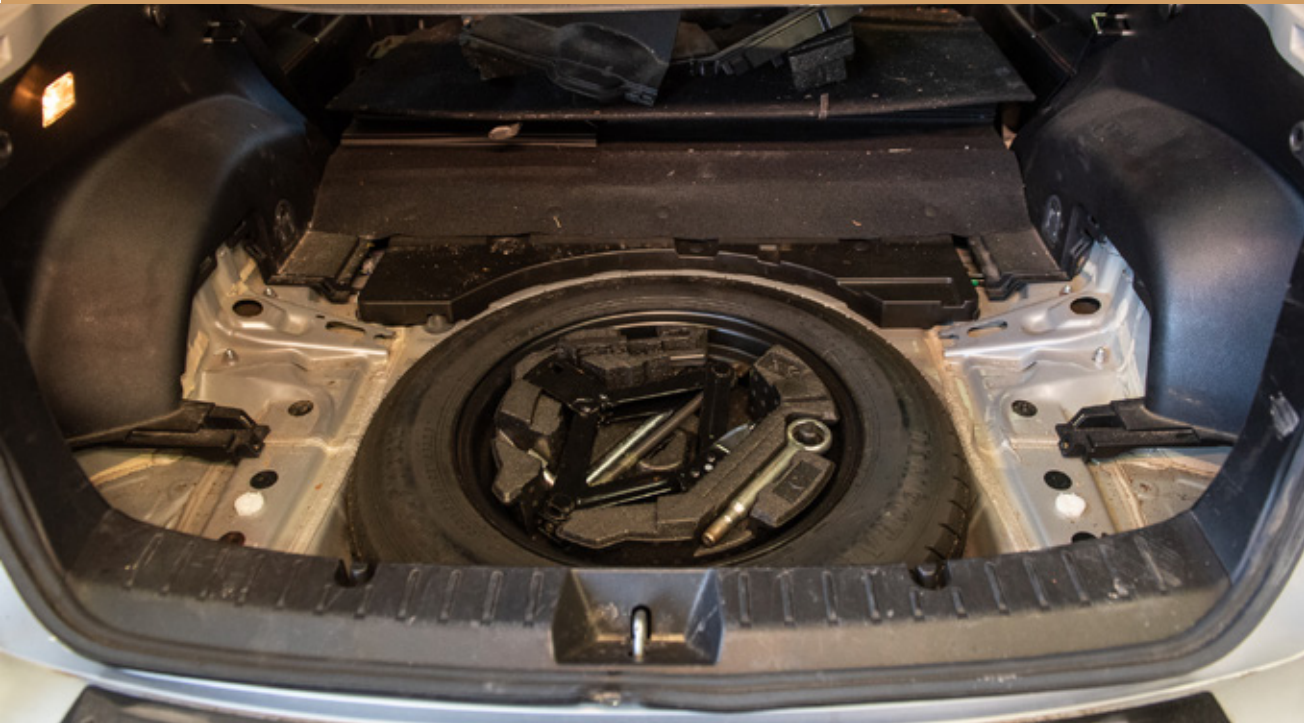
13

RE INSTALL BRAKE LINE BRACKET



14

REMOVE TRUNK INTERIOR



15

REMOVE REAR STRUT BOLTS



16

REMOVE GAS TANK COVERS





17

REMOVE REAR BRAKE LINE BRACKET



18

INSTALL BRAKE LINE SPACER



MAKE SURE TO ANGLE THE BRAKE LINE BRACKET TOWARDS THE INSIDE OF THE VEHICLE



19

LOOSEN SWAY BAR MOUNT



20

REMOVE LOWER STRUT AND KNUCKLE BOLTS





21

REMOVE REAR STRUT ASSEMBLY



22

INSTALL TOP PLATE SPACERS



USE A PRY BAR OR LONG SCREWDRIVER TO HELP SUPPORT THE STRUT DURING INSTALLATION



23

USE A TRANSMISSION JACK TO SUPPORT THE REAR DIFFERENTIAL



24

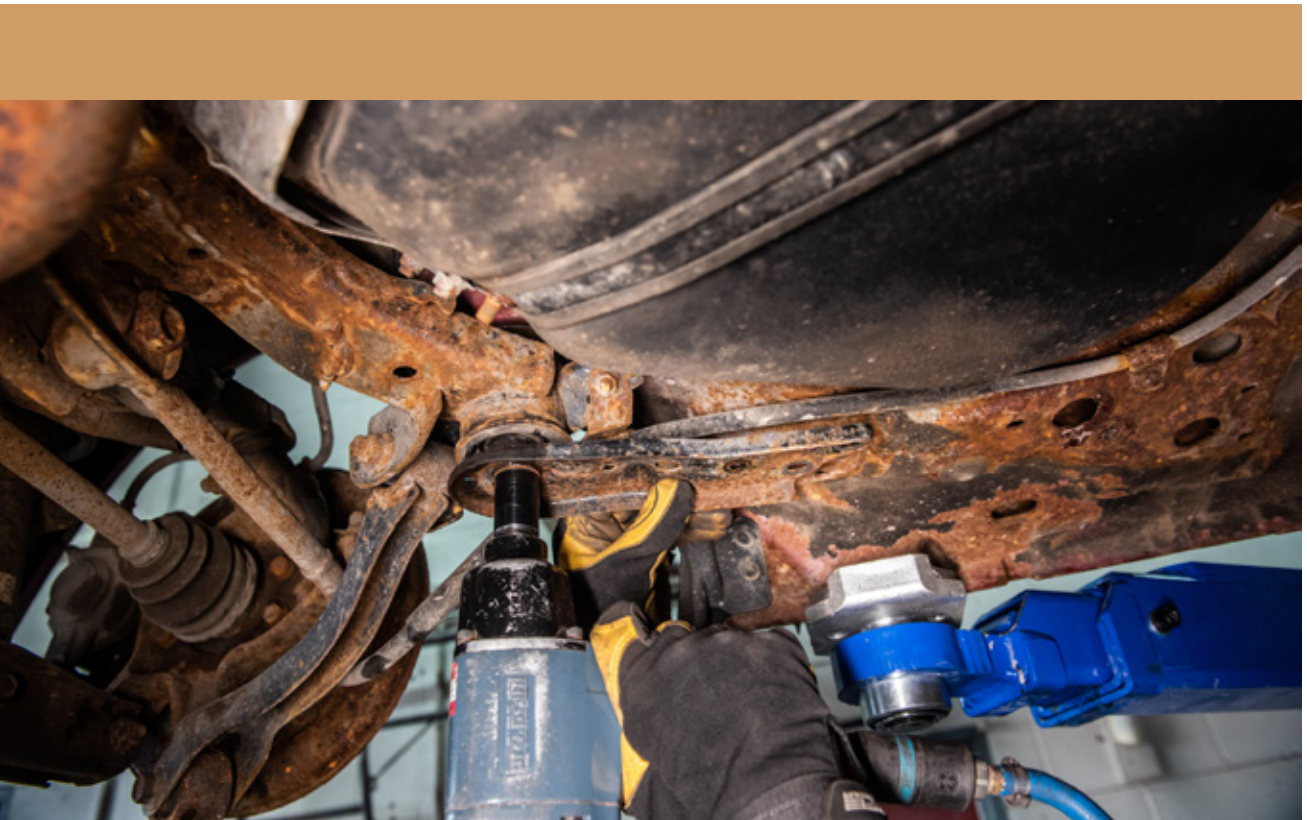
REMOVE TWO BOLTS ON THE REAR SUB FRAME SUPPORT BRACKET





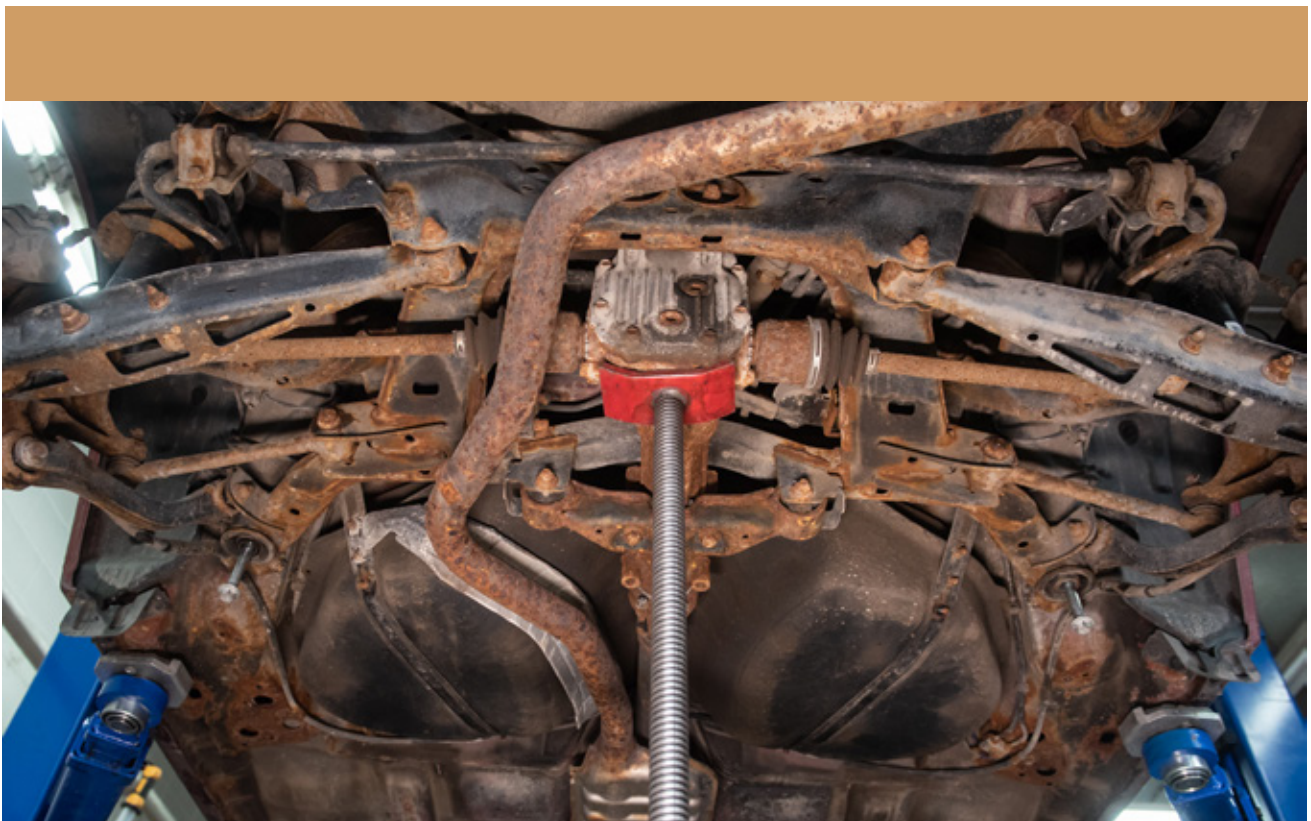
25

REMOVE THE FRONT BOLTS OF THE REAR SUB FRAME



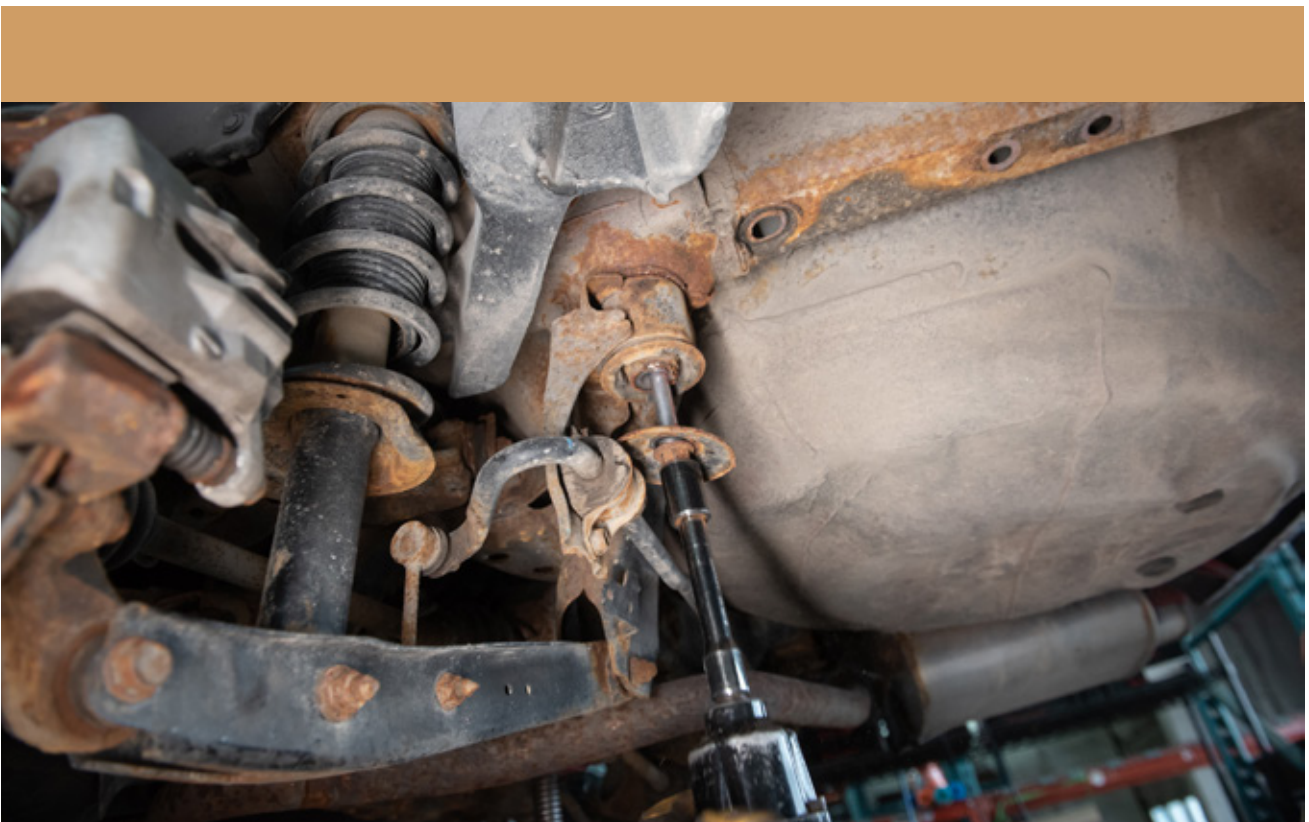
26

TEMPORARILY INSTALL SUPPLIED SUB FRAME BOLTS TO HELP KEEP EVERYTHING CENTERED DURING INSTALLATION. DON'T THREAD IN COMPLETELY.



27

REMOVE THE REAR BOLTS OF THE REAR SUB FRAME





28

CAREFULLY LOWER THE SUB FRAME DOWN SO THE
SUB FRAME SPACERS CAN BE INSTALLED



29

INSTALL REAR SUB FRAME SPACERS



30



DO NOT TIGHTEN THE BOLT ALL THE WAY YET



31

REMOVE THE TEMPORARY BOLT



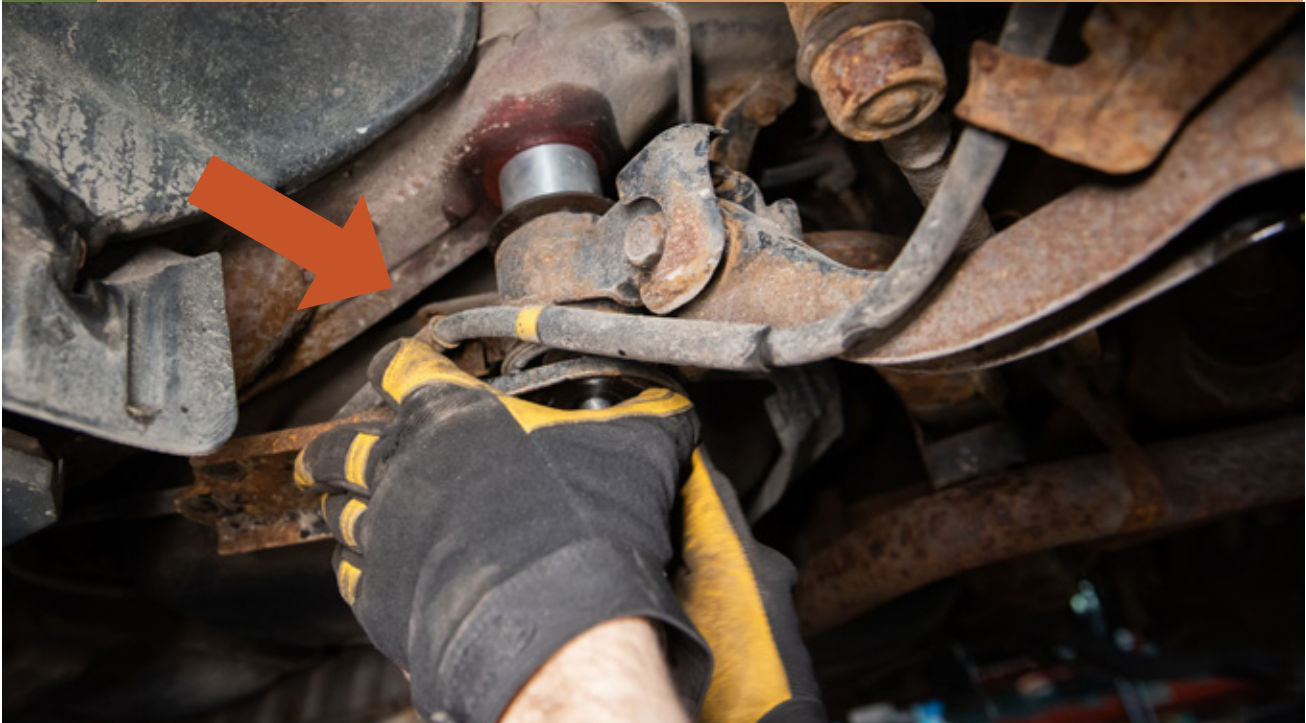
32

INSTALL SPACERS ON THE FRONT OF THE REAR SUB FRAME



33

RE INSTALL SUPPLIED SUB FRAME BOLT WITH THE SUB FRAME SUPPORT BRACKET



34

INSTALL SUB FRAME SUPPORT BRACKET SPACERS



YOU CAN NOW TIGHTEN ALL THE HARDWARE



35

RE INSTALL REAR STRUT ASSEMBLY



36

RE INSTALL KNUCKLE AND STRUT BOLTS





37

RE TIGHTEN SWAY BAR MOUNT



38

RE INSTALL GAS TANK PLASTICS



39

RE INSTALL REAR STRUT HARDWARE



40

RE INSTALL TRUNK INTERIOR



41

RE INSTALL WHEELS



INSTALLATION COMPLETE!



▼
NOTES:

****Tighten all the bolts to the manufacturer's specifications with a Torque Wrench****

**Double check your work.
Reinstall the wheels and be sure to tighten
the nuts with a torque wrench.**

Wheel alignment is required after installation.

**Products warnings:
<https://lpaventure.com/pages/products-warnings>**

**Limited product warranty:
<https://lpaventure.com/pages/limited-prod->**



**You have completed the installation.
Thank you for your interest
in our products.**

**For all requests, information or
assistance: Contact our team
by phone at
1 (866) 562-1316**

**We are available Monday to Friday
Between 8AM and 5PM (EST).**

**Or by email at :
SALES@LPAVENTURE.COM
WWW.LPAVENTURE.COM**

NOW, ENJOY THE RIDE!