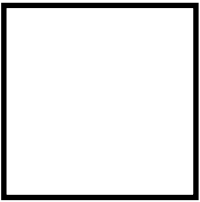


# TEST BOX

When printed at 100%  
this box will measure  
1" x 1" (2.5cm x 2.5 cm)

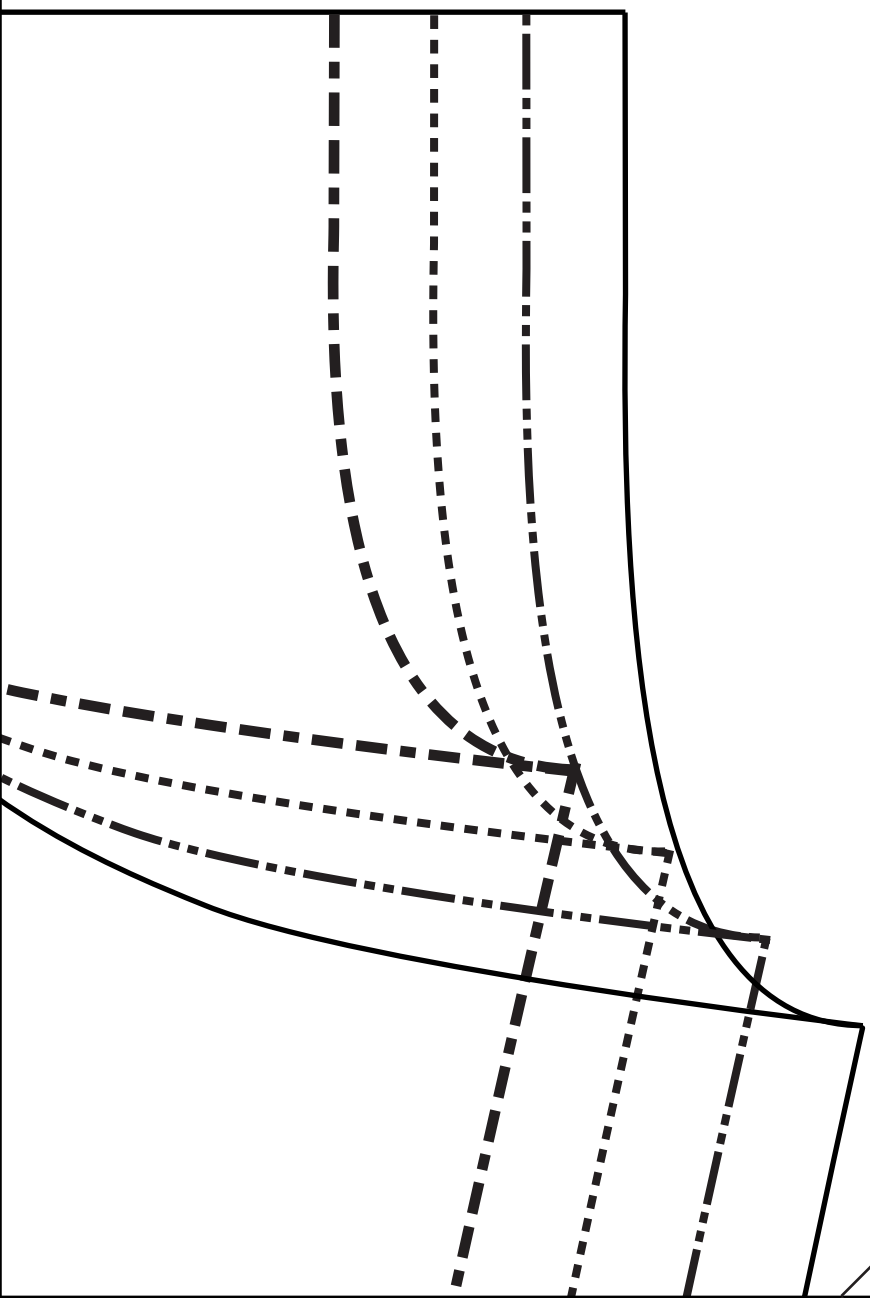


Print on 8.5" x 11" paper

# ASSEMBLE

Match numbers at long  
edge and letters at short  
edge. Tape together.

back

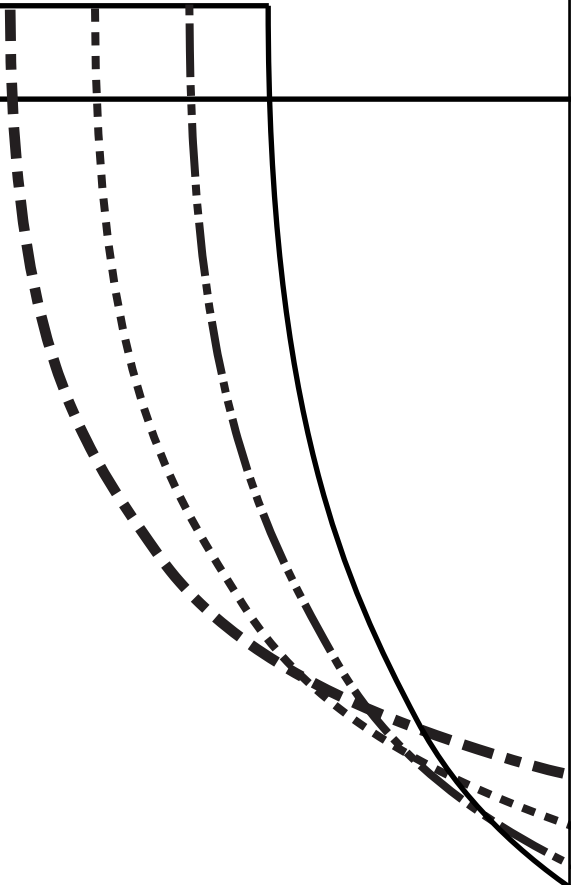


A

1

1

front



2

B

# array shirt

sizes S - XL

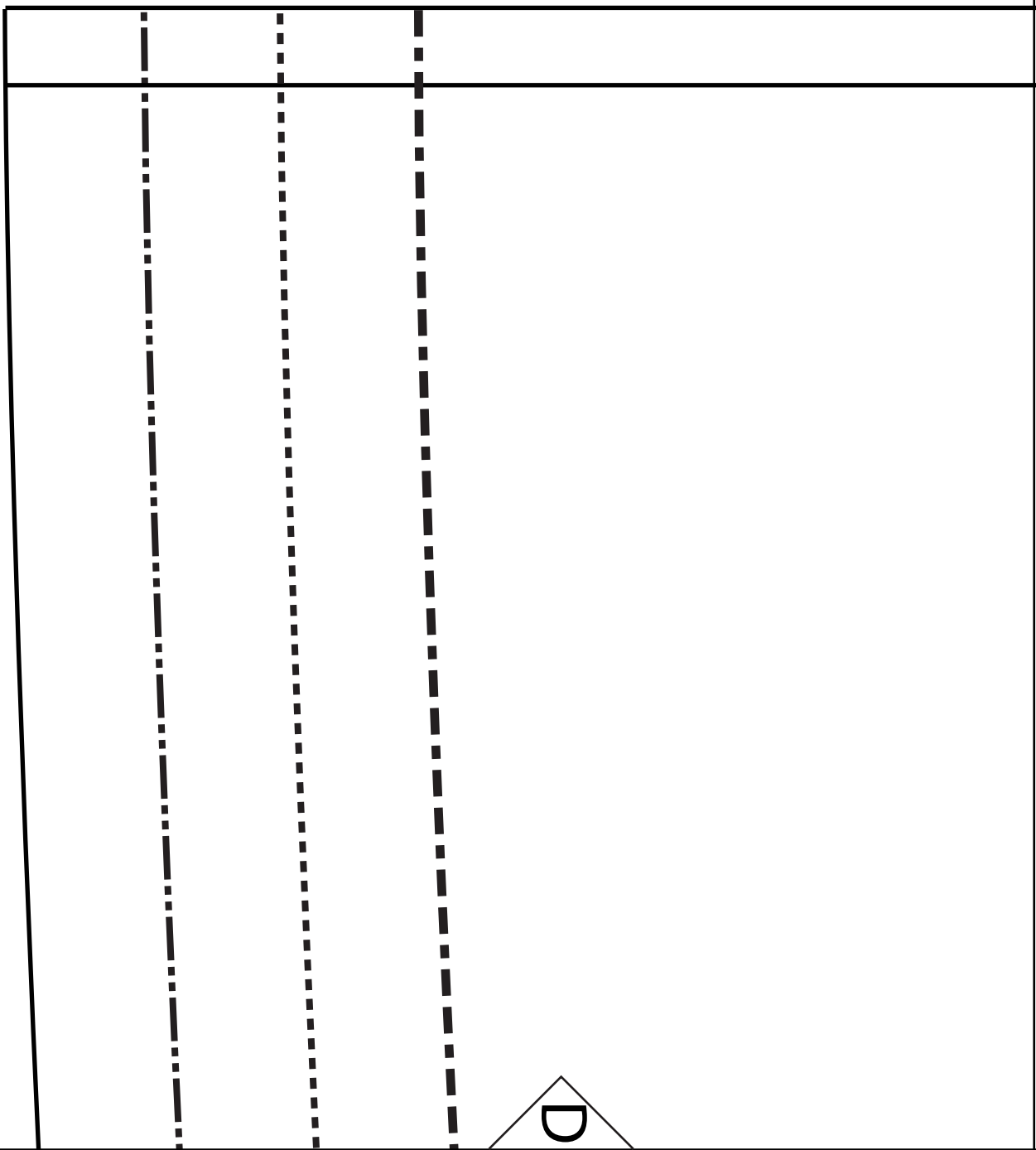
Cut 1 for Back on Fold

Cut 2 for Front



**FOLD**

3



D

SIZES

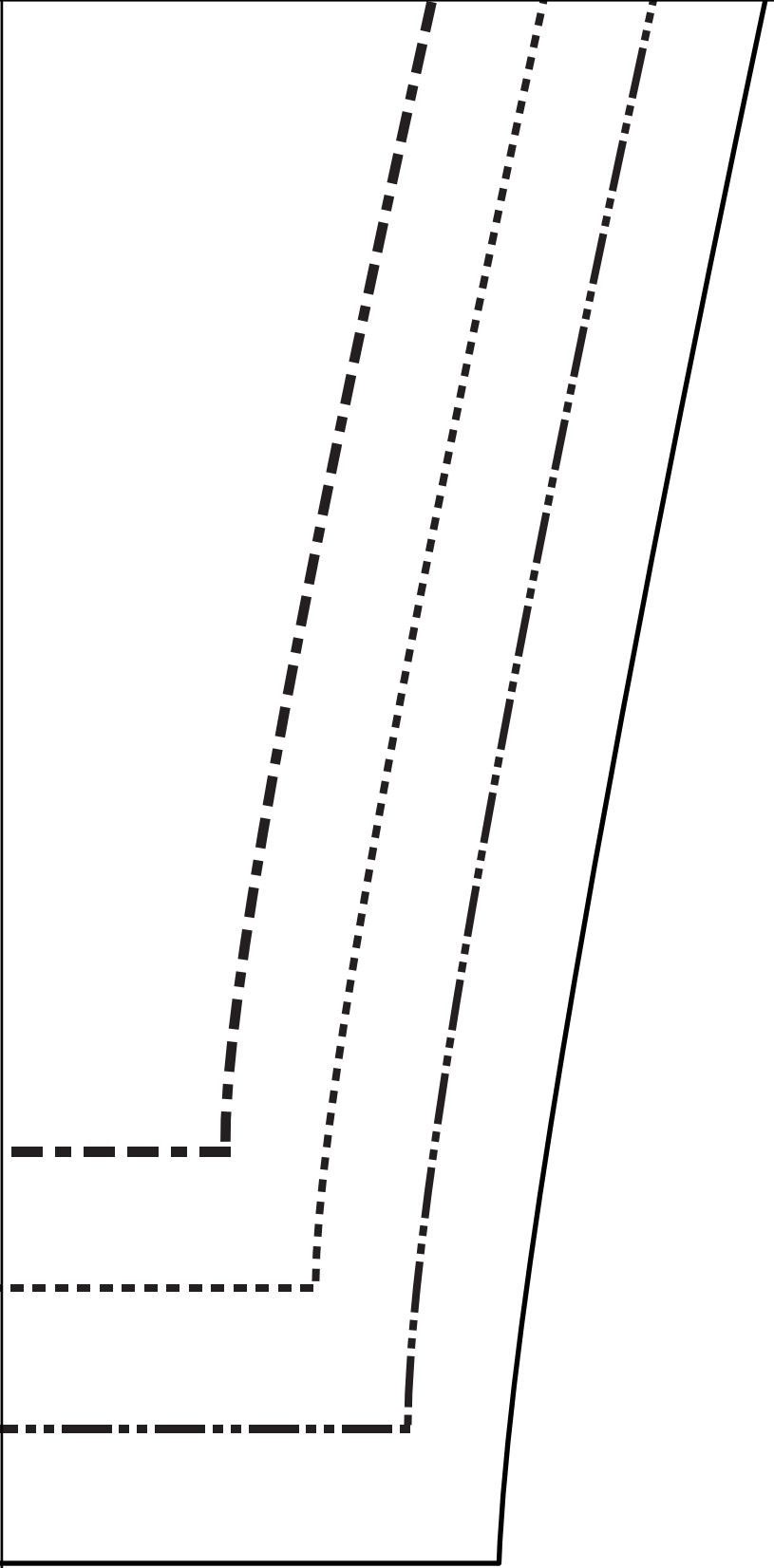
— Small

--- Medium

-·-·- Large

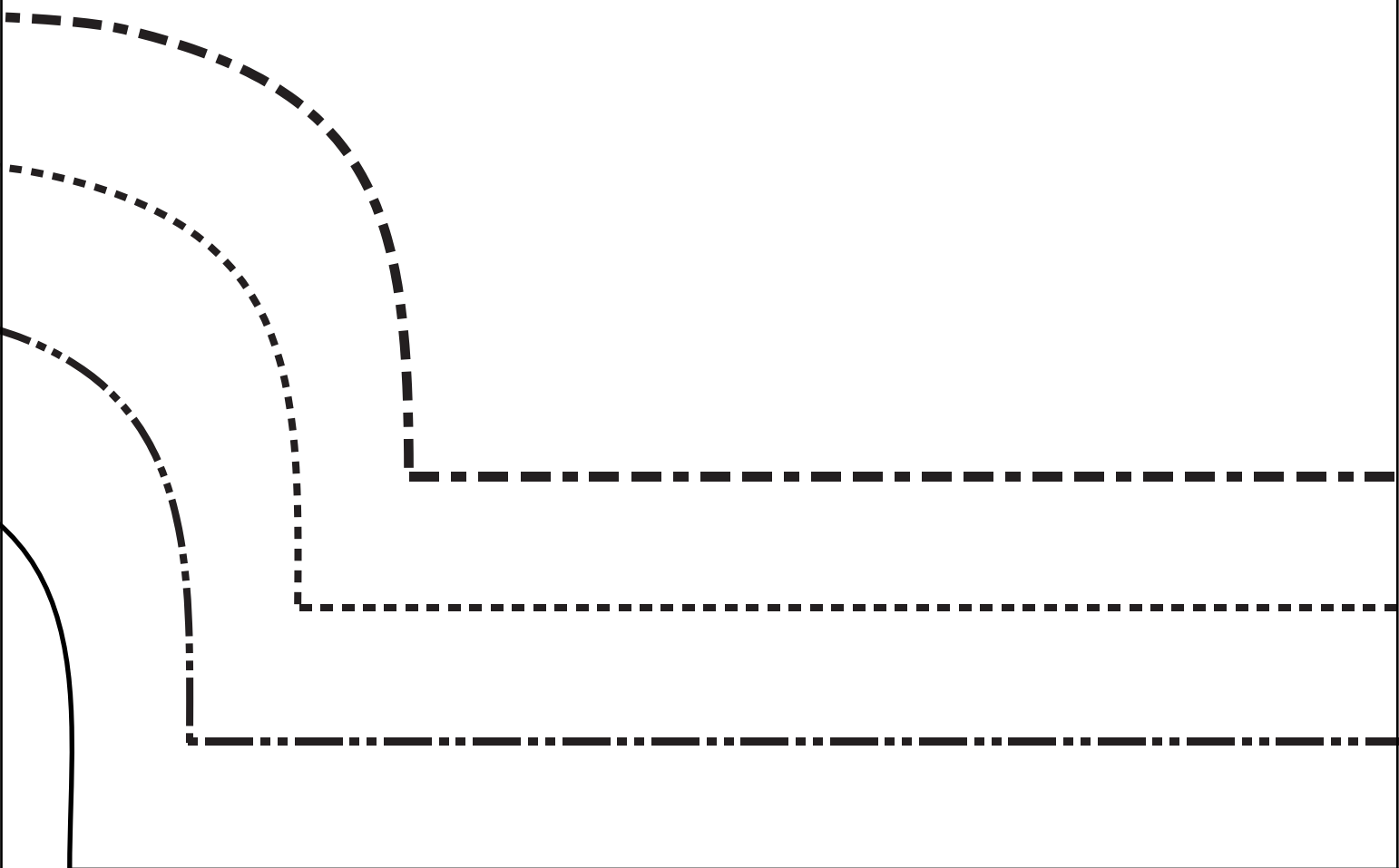
—— X-Large

A



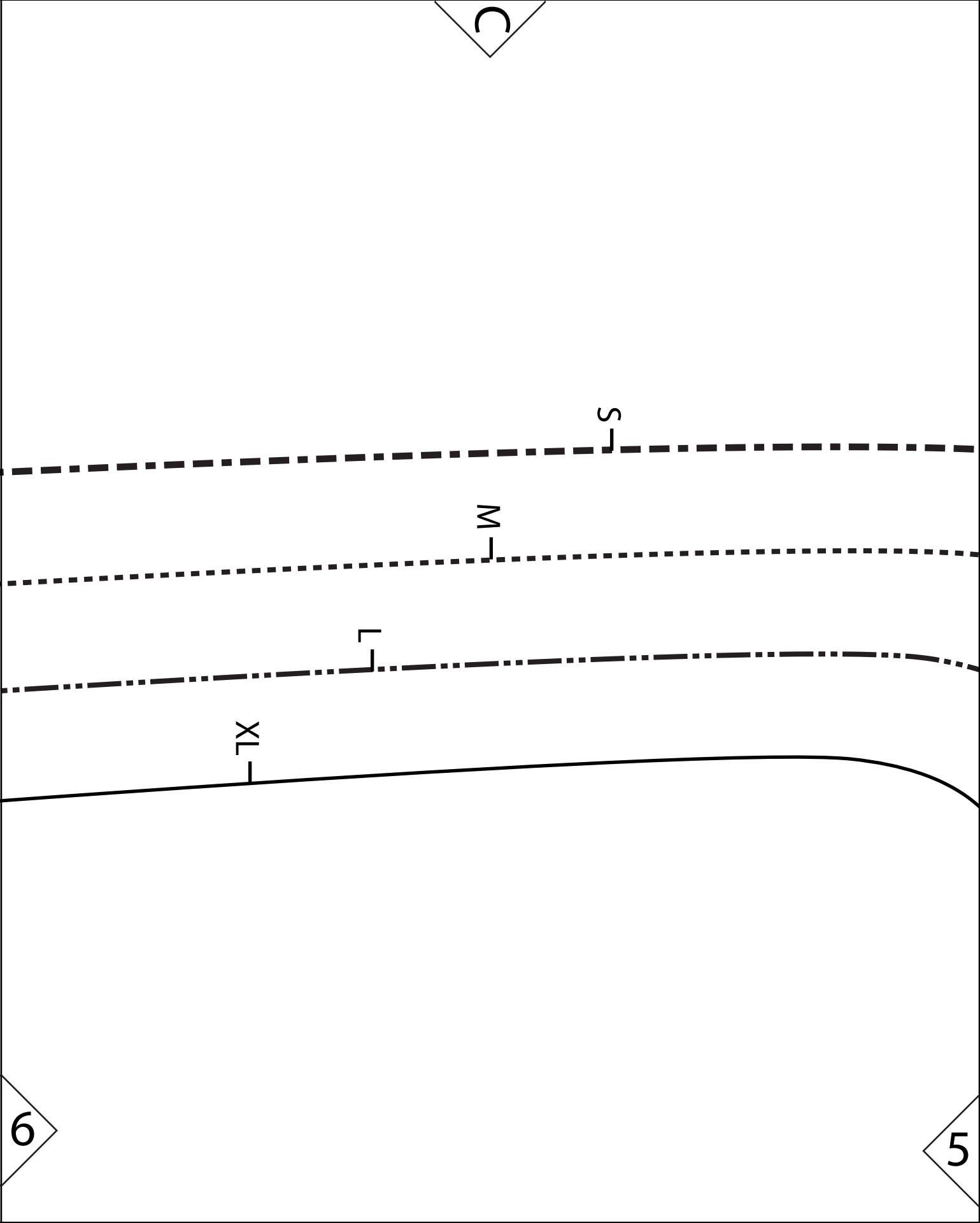
4

B



5

4



D