

## swoon *maine* errata

### Shoreline Vest

#### Finished measurements

30½ (33½, 35, 36½, 39½, 42¾, 45¾, 48¾, 51¾, 54¾)"  
[77.5 (85, 89, 92.5, 100.5, 108.5, 116, 124, 131.5, 139) cm] bust  
circumference

#### In the body of the vest:

##### Begin side shaping

**Next row dec row:** (RS) \*Knit to 3 sts before m, ssk, k1, sl m, k1, k2tog; rep from \* **one more time**, knit to end (4 sts dec'd)—168 (184, 192, 200, 216, 232, 248, 264, 280, 296) sts rem.

#### Left Front shoulder shaping should be worked as follows:

##### Begin shoulder shaping

**Next row:** (RS) BO 3 (4, 4, 4, 5, 5, 6, 6, 7, 7) sts, knit to end—7 (8, 9, 10, 10, 12, 12, 14, 14, 16) sts rem.

**Next row:** (WS) Purl.

**Next row:** (RS) BO 3 (4, 4, 5, 5, 6, 6, 7, 7, 8) sts, knit to end—4 (4, 5, 5, 5, 6, 6, 7, 7, 8) sts rem.

**Next row:** (WS) Purl.

**Next row:** (RS) BO rem sts.

#### Back shoulder shaping should be worked as follows:

##### Begin shoulder and neck shaping

**Next row:** (RS) BO 3 (4, 4, 4, 5, 5, 6, 6, 7, 7) sts, knit to first m for right shoulder, join a second ball of yarn, BO center 34 (34, 34, 36, 38, 40, 40, 42, 42) sts, knit to end for left shoulder—9 (10, 11, 12, 12, 14, 14, 16, 16, 18) sts rem on right shoulder and 12 (14, 15, 16, 17, 19, 20, 22, 23, 25) sts rem on left shoulder.

**Next row:** (WS) BO 3 (4, 4, 4, 5, 5, 6, 6, 7, 7) sts, purl to end of left shoulder; on other side, BO 2 sts at neck edge, purl to end—9 (10, 11, 12, 12, 14, 14, 16, 16, 18) sts rem on left shoulder and 7 (8, 9, 10, 10, 12, 12, 14, 14, 16) sts rem on right shoulder.

**Next row:** (RS) BO 3 (4, 4, 5, 5, 6, 6, 7, 7, 8) sts, knit to end of right shoulder sts; on other side, BO 2 sts at neck edge, knit to end of left shoulder—4 (4, 5, 5, 5, 6, 6, 7, 7, 8) sts rem on right shoulder and 7 (8, 9, 10, 10, 12, 12, 14, 14, 16) sts rem on left shoulder.

**Next row:** (WS) BO 3 (4, 4, 5, 5, 6, 6, 7, 7, 8) sts, purl to end of left shoulder sts; on other side, purl to end—4 (4, 5, 5, 5, 6, 6, 7, 7, 8) sts on each shoulder.

**Next row:** (RS) BO 4 (4, 5, 5, 5, 6, 6, 7, 7, 8) rem right shoulder sts; on other side, knit to end of left shoulder.

**Next row:** (WS) BO 4 (4, 5, 5, 6, 6, 7, 7, 8) rem left shoulder sts.

#### Right Front shoulder shaping should be worked as follows:

##### Begin shoulder shaping

**Next row:** (WS) BO 3 (4, 4, 4, 5, 5, 6, 6, 7, 7) sts, purl to end—7 (8, 9, 10, 10, 12, 12, 14, 14, 16) sts rem.

**Next row:** (RS) Knit.

**Next row:** (WS) BO 3 (4, 4, 5, 5, 6, 6, 7, 7, 8) sts, purl to end—4 (4, 5, 5, 5, 6, 6, 7, 7, 8) sts rem.

**Next row:** (RS) Knit.

**Next row:** (WS) BO rem sts.

### Little Shoreline Vest

#### Hem

With **larger** circ and using the long-tail cast on...

### Lighthouse Pullover

#### Yarn requirements have been updated:

Lark by Quince & Co. (100% American wool;  
50 grams / 134 yards [123 meters])

• 7 (8, 8, 9, 9, 10, 11, 11, 12) skeins Sabine (Color A)

• 1 skein Egret (Color B)

• 1 skein Iceland (Color C)

• 1 skein Kumlien's Gull (Color D)

OR in worsted weight yarn:

• 881 (942, 1027, 1107, 1198, 1276, 1389, 1475, 1572) yards [635 (678, 738, 793, 857, 911, 991, 1051, 1118) meters] Color A

• 8 (8, 8, 9, 9, 9, 9, 9, 9) yards [8 (8, 8, 9, 9, 9, 9, 9, 9) meters] Color B

• 16 (17, 17, 18, 18, 18, 18, 19, 19) yards [15 (16, 16, 17, 17, 17, 17, 18, 18) meters] Color C

• 10 (11, 11, 11, 12, 12, 12, 12, 12) yards [10 (11, 11, 11, 11, 11, 11, 11, 11) meters] Color D

### Shore Cardigan

• In the Yoke, the following section has a missing dash in the sleeve stitch count:

#### Sizes - (-, 39½, 43, 46¾, 49¾, 53, 56½)" only:

Rep the last 4 rows - (-, 0, 1, 3, 4, 5, 6) more times—

- (-, 272, 276, 288, 306, 322, 340, 356) sts; - (-, 40, 43, 46, 49, 52, 55) sts each front, - (-, 54, 56, 59, 61, 64, 66) sts

each sleeve and - (-, 84, 90, 96, 102, 108, 114) sts for back.

• In the Body section, work as follows:

Cont in St st until body meas **13" [40.5 cm]** from underarm, ending after a WS row.

• Then at the end of Body section:

#### Begin 2x2 rib

**Next row:** (RS) K1, \*k2, p2; rep from \* to last 3 sts, k3.

**Next row:** (WS) P3, \*k2, p2; rep from \* to last st, p1.

Cont even in 2x2 rib until hem band meas 2" [5 cm], body meas approx **18½" [47 cm]**, measuring from center back to underarm, ending after a WS row.

- In the Buttonhole band section:

Next row **buttonhole row**: (RS) K3 (3, 3, 4, 3, 4, 4, 3), \*yo twice, k2tog, k13 (13, 13, 13, 14, 14, 14, 15); rep from \* five more times; yo twice, k2tog, k3 (3, 3, 4, 3, 4, 4, 3) to end.

## Little Shore Cardigan

- In the Body section, work as follows:

Cont working in St st until body meas 4½ (5¼, 6, 6, 6, 6½, 7½, 9¼, 10¾)" [11.5 (13.5, 15.5, 15.5, 15.5, 16.5, 19, 23.5, 26) cm] from underarm, ending after a WS row.

- Then at the end of Body section:

### Begin 2x2 rib

Next row: (RS) K1, \*k2, p2; rep from \* to last 3 sts, k3.

Next row: (WS) P3, \*k2, p2; rep from \* to last st, p1.

Cont in 2x2 rib until hem band meas 1¼ (1¼, 1½, 1½, 2, 2, 2, 2, 2)" [3 (3, 4, 4, 5, 5, 5, 5, 5) cm], body meas 8 (8¾, 10¼, 10¾, 10¾, 12, 13, 14¾, 15¾)" [20.5 (22.5, 26, 26, 27.5, 30.5, 33, 37.5, 40) cm], ending after a WS row.

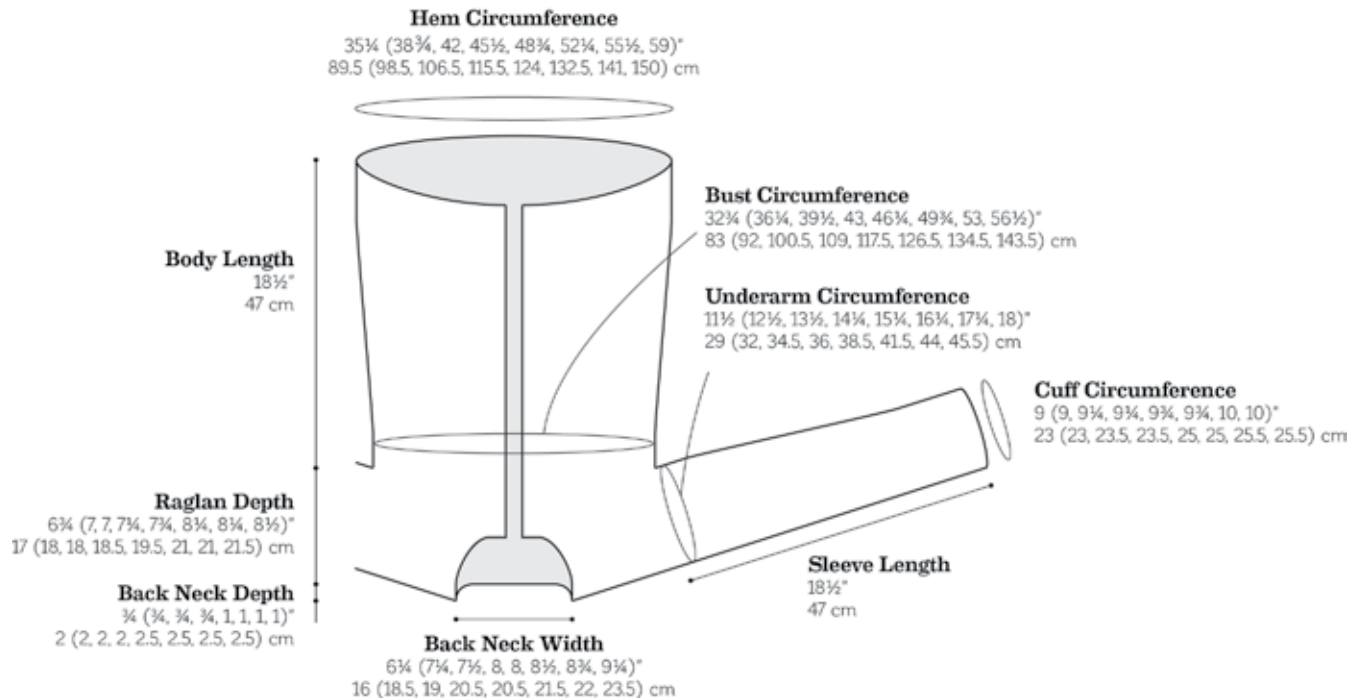
## Tree Shawl

### Begin Charts

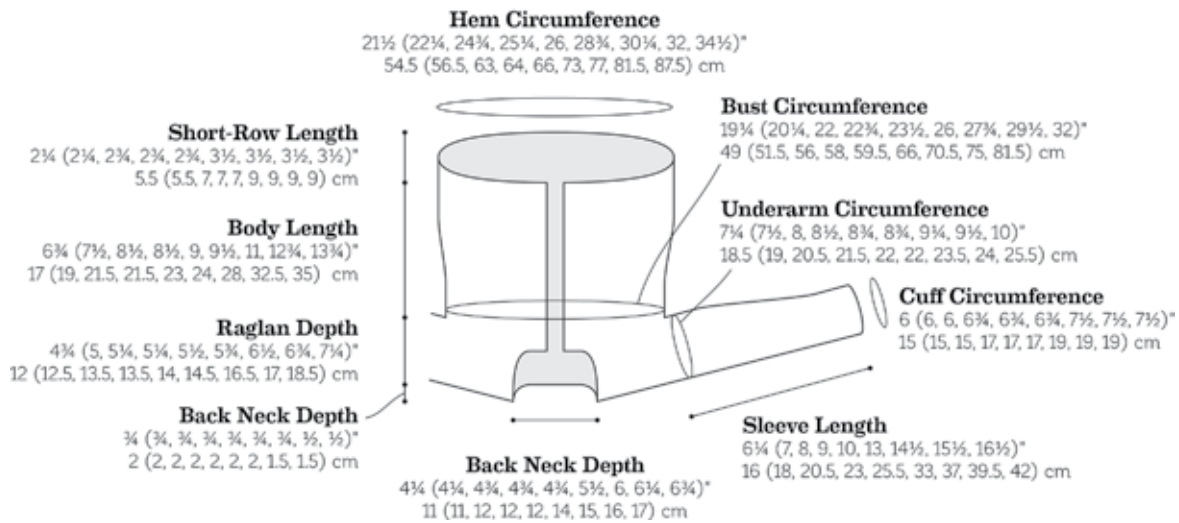
Notes on charts:

- Shawl decreases occur inside the double-yamover borders throughout.
  - Stitch count decreases by 2 sts every RS row.
- Stitch count decreases by a further 2 sts on WS row **8**.

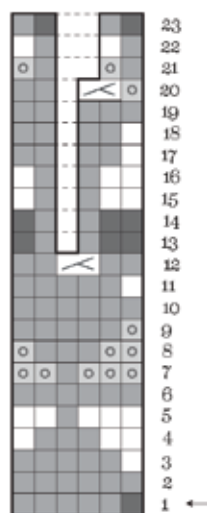
# Shore Cardigan



# Little Shore Cardigan



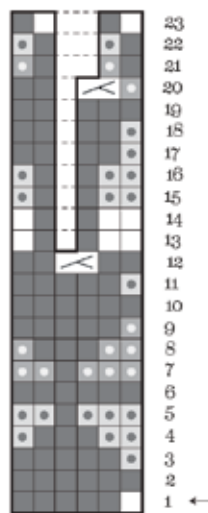
### *little lighthouse chart*



#### KEY

- Color A: Kumlien's Gull
- Color B: Honey
- Color C: Clay
- ◻ Color D: Bird's Egg
- ⊂ K2tog: Knit 2 together (with color A)

### *lighthouse chart*



#### KEY

- Color A: Sabine
- Color B: Egret
- ◻ Color C: Iceland
- ◻ Color D: Kumlien's Gull
- ⊂ K2tog: Knit 2 together (with color A)