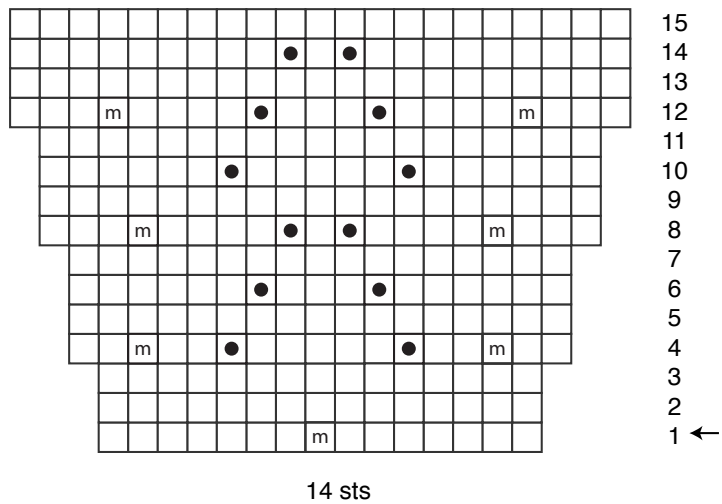
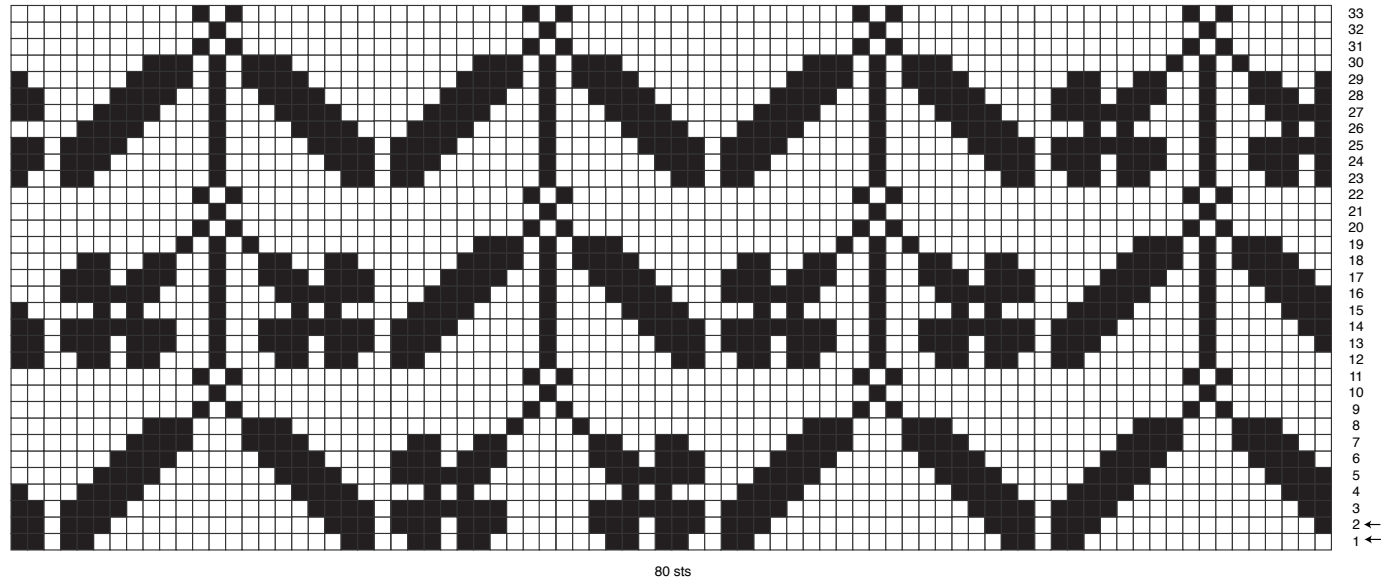


Bobble Chart



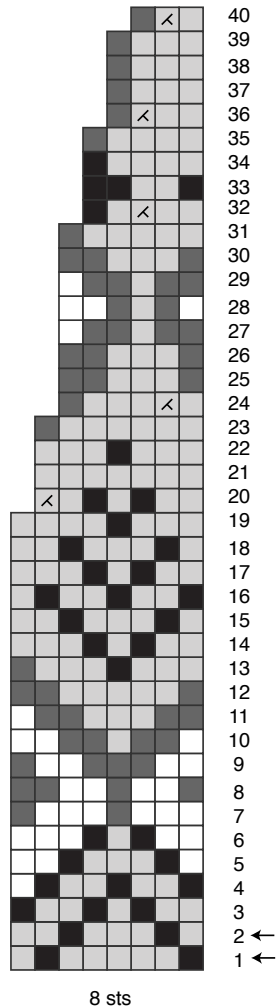
Color Chart C



## Treelight By Jennifer Steingass

Updated Chart and Join text

### Yoke Chart



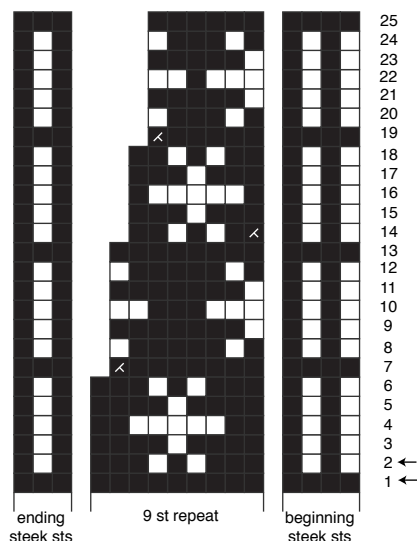
### Join Body and Sleeves

With body on larger circ, and working with attached yarn at end of **front**, with RS facing, place sts for sleeve onto LH needle and **pm for short rows (marker B)** then **knit across sleeve**, knit across **back**, **pm for BOR**, with RS facing, place sts for sleeve onto LH needle and knit across, **pm for short rows (marker A)**, knit across **front**, then **knit to BOR**— 264 (272, 280, 288, 304, 328, 352) sts. [omit "Knit 1 rnd" that follows the join]

## Moorie by Ella Gordon

Updated chart

Color Chart



## Calla Lily by Justyna Lorkowska

Updated written instructions-

### Begin Border

k1 highlighted in red should be removed

**Row 6:** K3, yo, k1, p1-tbl, p1, p1-tbl, k1, p5, k1, [p5, (k1, p1-tbl, p1, p1-tbl) two times, k1, p5, k1] to 13 sts before m, p5, k1, p1-tbl, p1, p1-tbl, k4, sl m, p1, sl m, k4, **k1**, p1-tbl, p1, p1-tbl, k1, p5, [k1, p5, (k1, p1-tbl, p1, p1-tbl) two times, k1, p5] to last 14 sts, p5, k1, p1-tbl, p1, p1-tbl, k1, yo, k3 (2 sts inc'd)—377 sts.

....

Bracket highlighted in yellow should be added

**Row 12:** K3, yo, k7, p1-tbl, p1, p1-tbl, k1, p5, k1, [p5, (k1, p1-tbl, p1, p1-tbl) two times, k1, p5, **k1**] to 16 sts before m, p5, k1, p1-tbl, p1, p1-tbl, k7, sl m, p1, sl m, k7, p1-tbl, p1, p1-tbl, k1, p5, [k1, p5, (k1, p1-tbl, p1, p1-tbl) two times, k1, p5] to last 20 sts, k1, p5, k1, p1-tbl, p1, p1-tbl, k7, yo, k3 (2 sts inc'd)—395 sts.

## Ushida Cardigan by Whitney Hayward

pg 133 under "Sleeves" (changes in **red**)

### Begin 1x1 rib

First row: (WS) K2, \*p1, k1; rep from \* to last st, **k1**.

Next row: (RS) K2, \*p1, k1; rep from \* to last st, **k1**.

Cont in rib as est for 17 more rows.

Change to larger circ.

## **Forever Mittens by Carrie Bostick Hoge**

pg 146 under "Begin thumb placement" (changes in red)

For **Right** Mitten:

Next rnd: With waste yarn, k14 (12), sl these sts just worked onto LH needle and with working yarn, work Rnd 5 of Color Chart to end.

For **Left** Mitten:

Next rnd: Work Rnd 5 of Color Chart to last 14 (12) sts, with waste yarn, k14 (12), slip these sts just worked onto LH needle and with working yarn, cont working Rnd 5 of Color Chart to end.