

Making No. 6 / BLACK & WHITE *errata*

Japanese Style Linen Tote by Karen Stevens

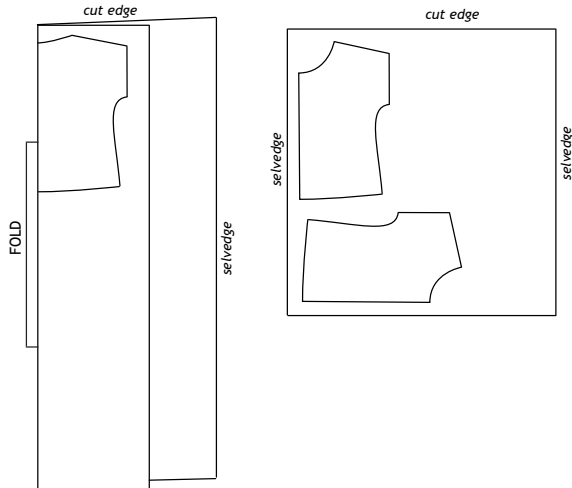
Under the heading **Piece the Exterior Gusset**

The first step should be to –

“Fuse interfacing to wrong side (WS) of Exterior Tote Main pieces.”

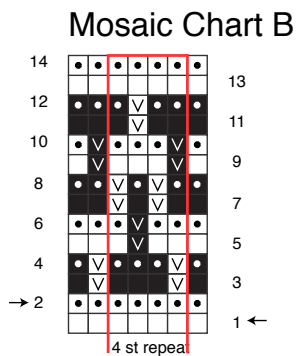
Array Shirt by Sonya Philip

Array Shirt Cutting Layout



Mosaic Shawl by Gudrun Johnston

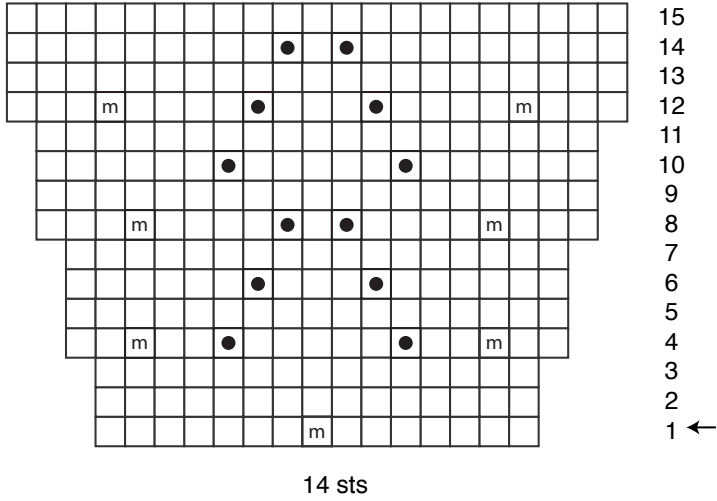
Updated Mosaic Chart B



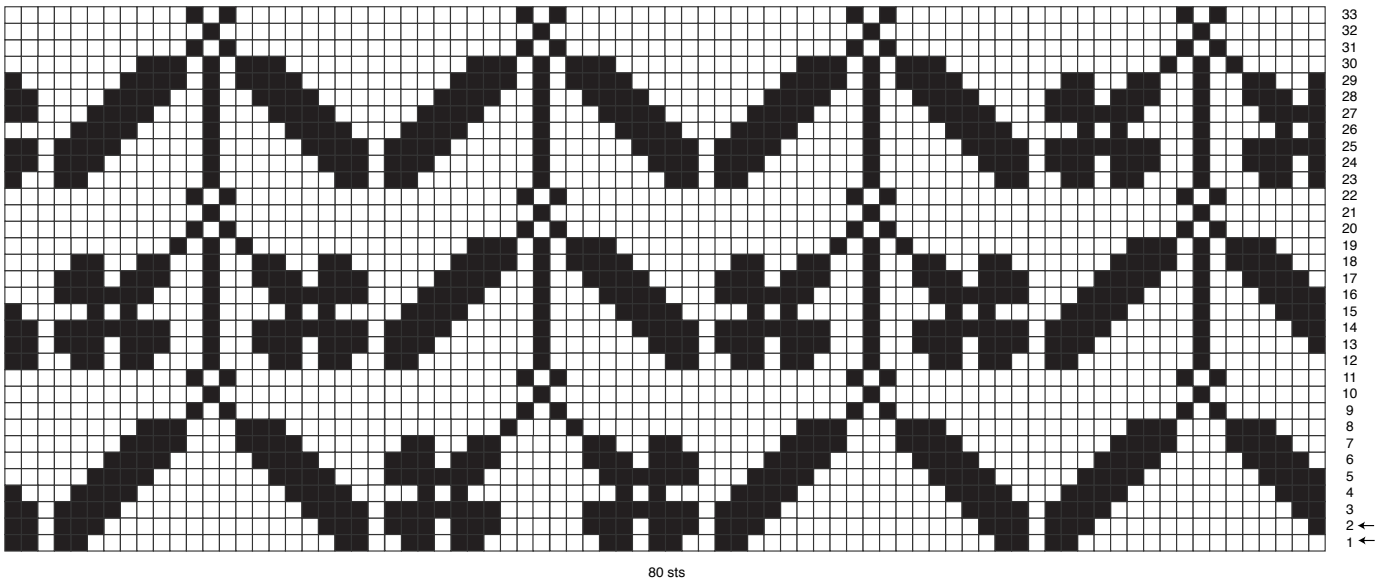
Michel by Junko Okamoto

Updated charts

Bobble Chart

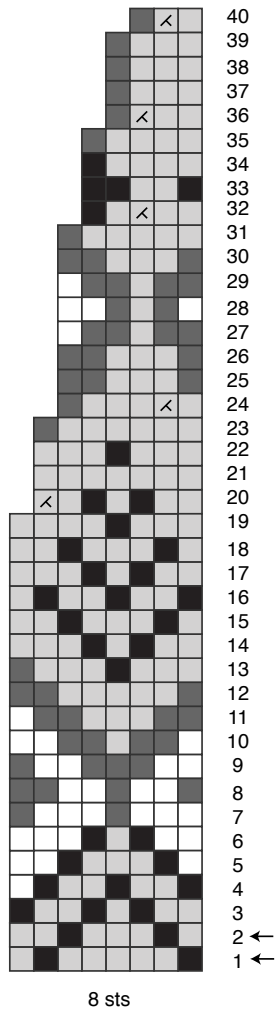


Color Chart C



Treelight By Jennifer Steingass
 Updated Chart and Join text

Yoke Chart



Join Body and Sleeves

With body on larger circ, and working with attached yarn at end of **front**, with RS facing, place sts for sleeve onto LH needle and **pm for short rows (marker B) then knit across sleeve**, knit across **back**, **pm for BOR**, with RS facing, place sts for sleeve onto LH needle and knit across, **pm for short rows (marker A)**, knit across **front**, then **knit to BOR**— 264 (272, 280, 288, 304, 328, 352) sts. [omit "Knit 1 rnd" that follows the join]