

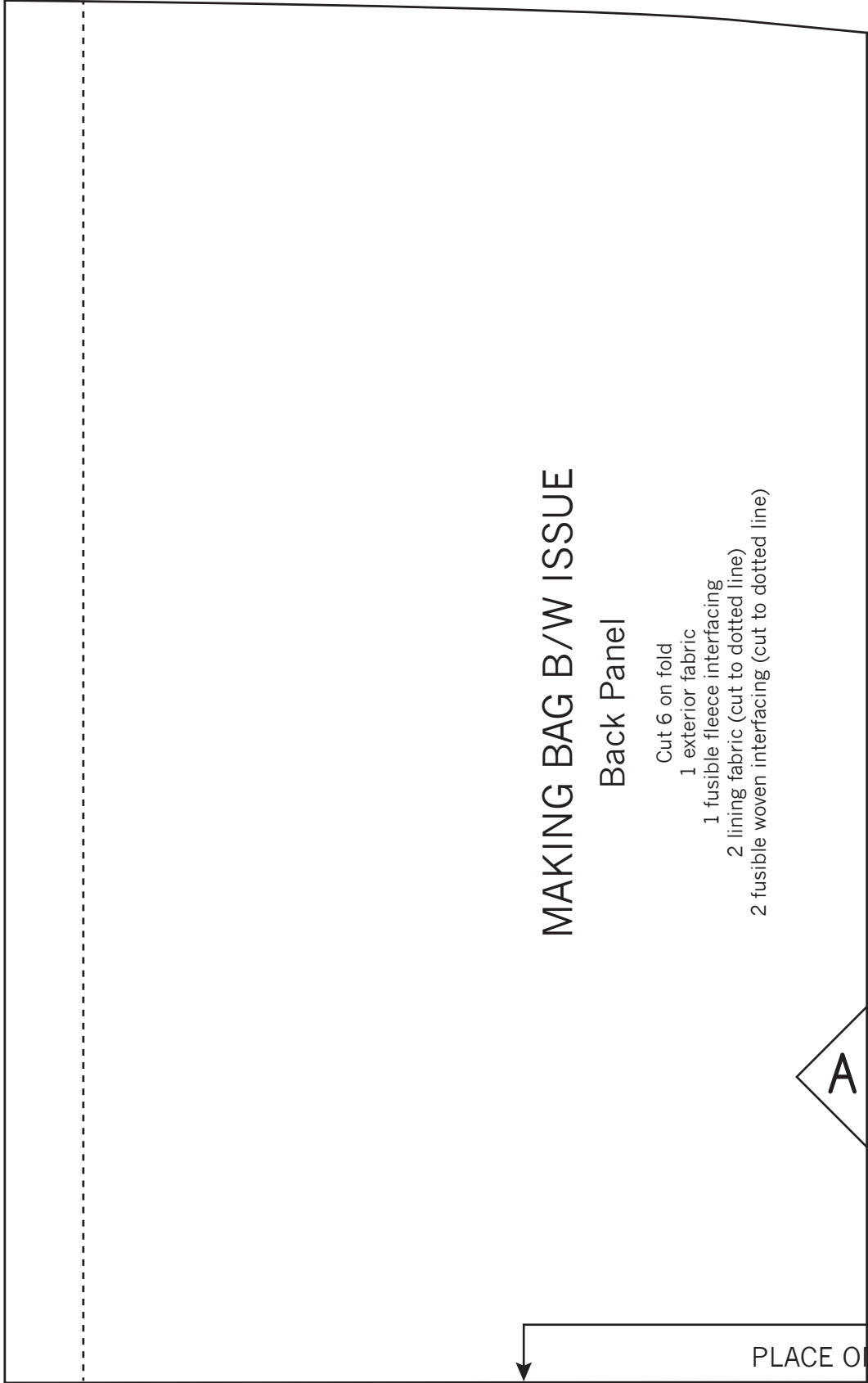
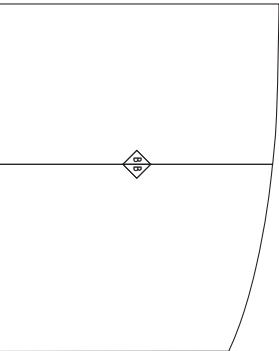
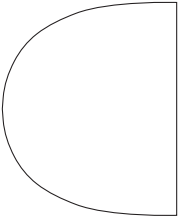
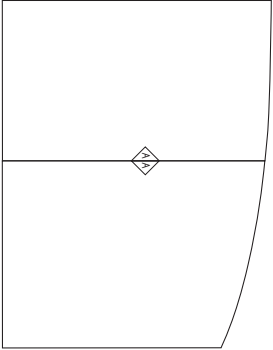
Test Box:

When printed at 100% this box will measure 1" square.

Assemble: Cut along solid lines, tape together at marked letters, matching 'A' to 'A' and so on.



Once assembled you will have three pattern pieces: Front Panel, Back Panel, Base



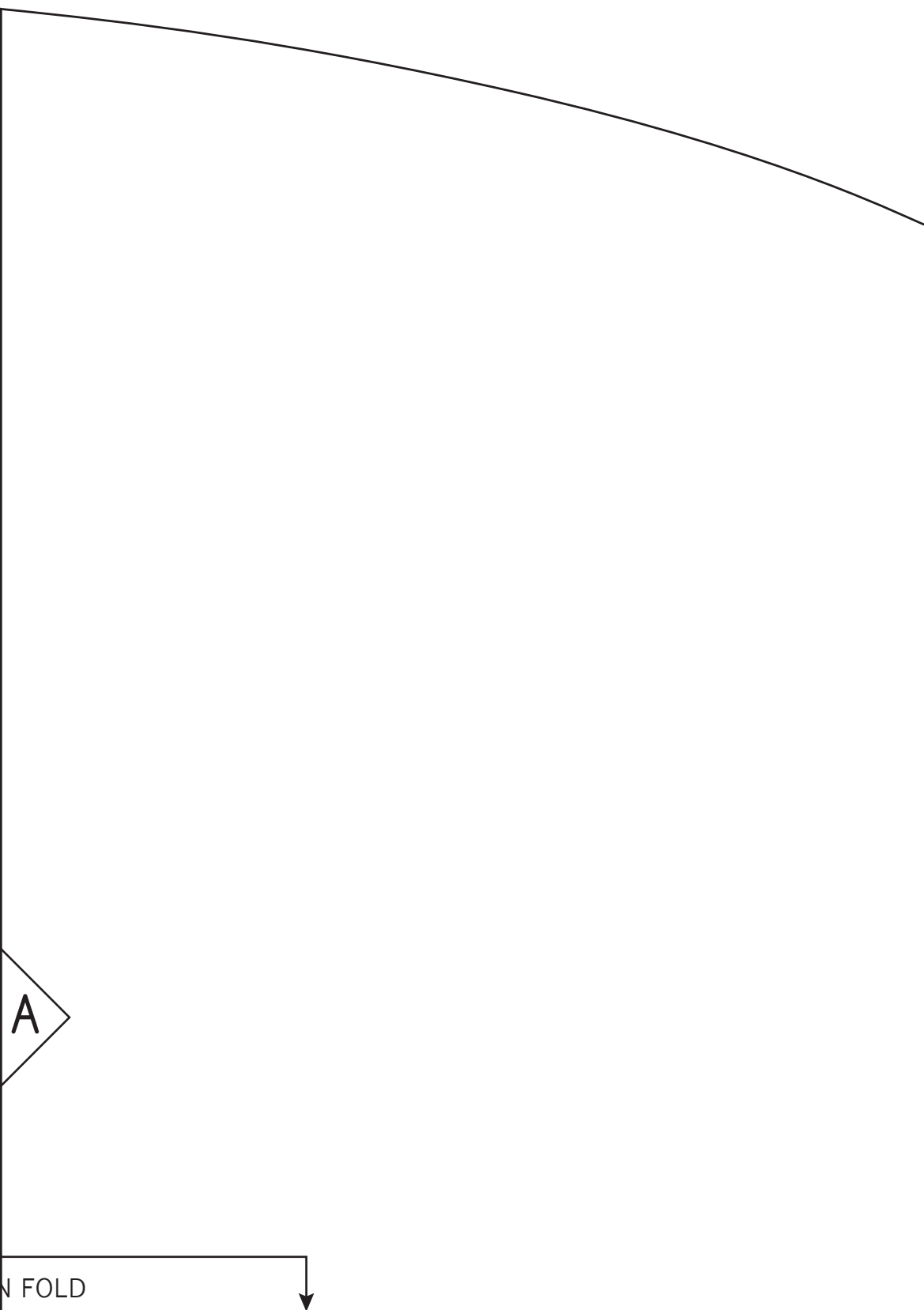
MAKING BAG B/W ISSUE

Back Panel

- Cut 6 on fold
- 1 exterior fabric
- 1 fusible fleece interfacing
- 2 lining fabric (cut to dotted line)
- 2 fusible woven interfacing (cut to dotted line)



PLACE ON



A

N FOLD

MAKING BAG B/W ISSUE

Front Panel

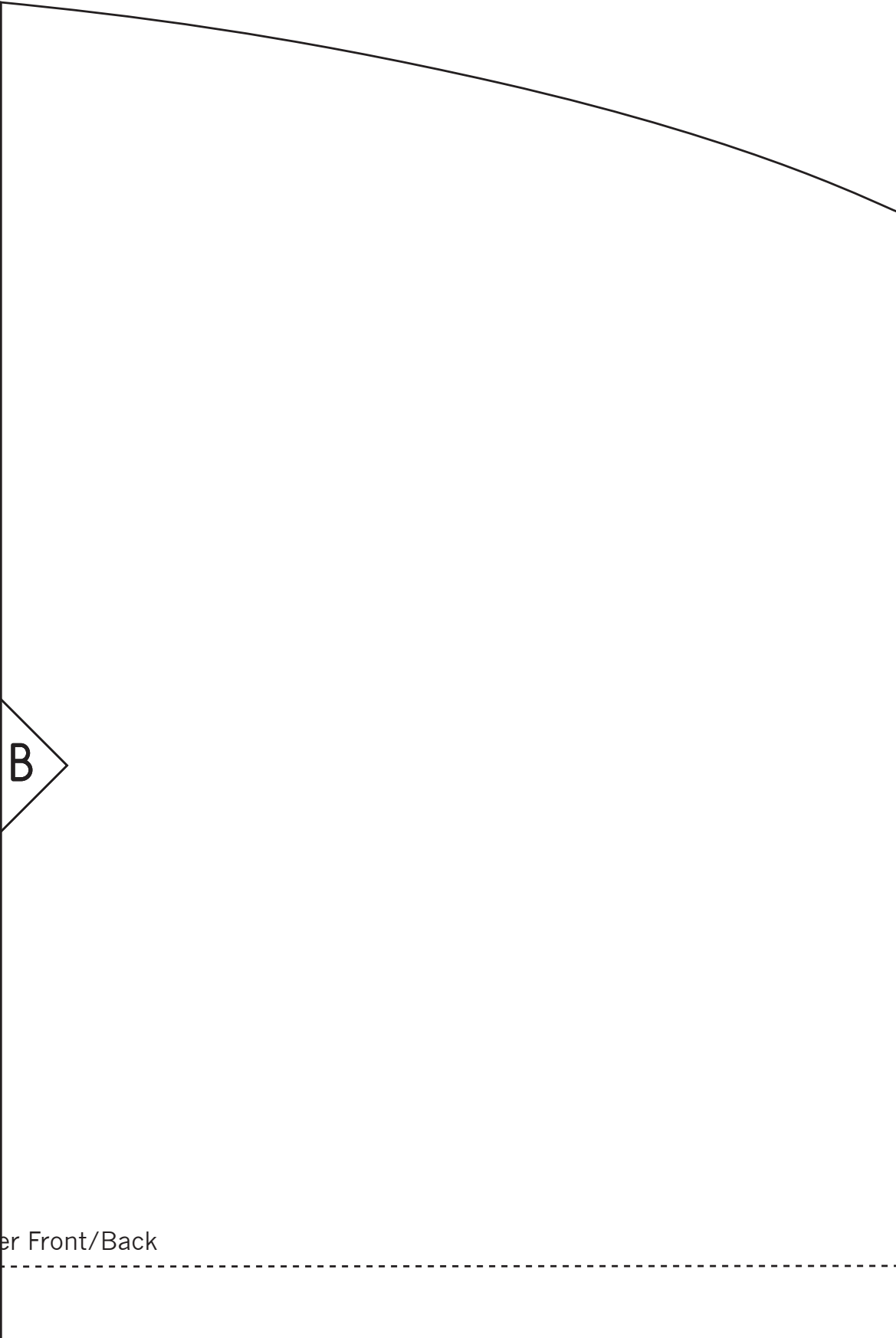
Cut 4

2 exterior fabric (cut 1, then 1 reversed)

2 fusible fleece interfacing (cut 1, then 1 reversed - cut to dotted line)

Cent





B

er Front/Back



MAKING BAG B/W ISSUE

Base

- Cut 4 on fold
- 1 exterior fabric
- 1 fusible fleece interfacing
- 1 lining fabric
- 1 fusible woven interfacing

PLACE ON FOLD