

1" TEST SQUARE

Print pattern pieces at 100%

Do not scale to fit paper.

To assemble the pattern piece,
line up the labeled diamonds

JAPANESE STYLE LINEN TOTE

Tote Main

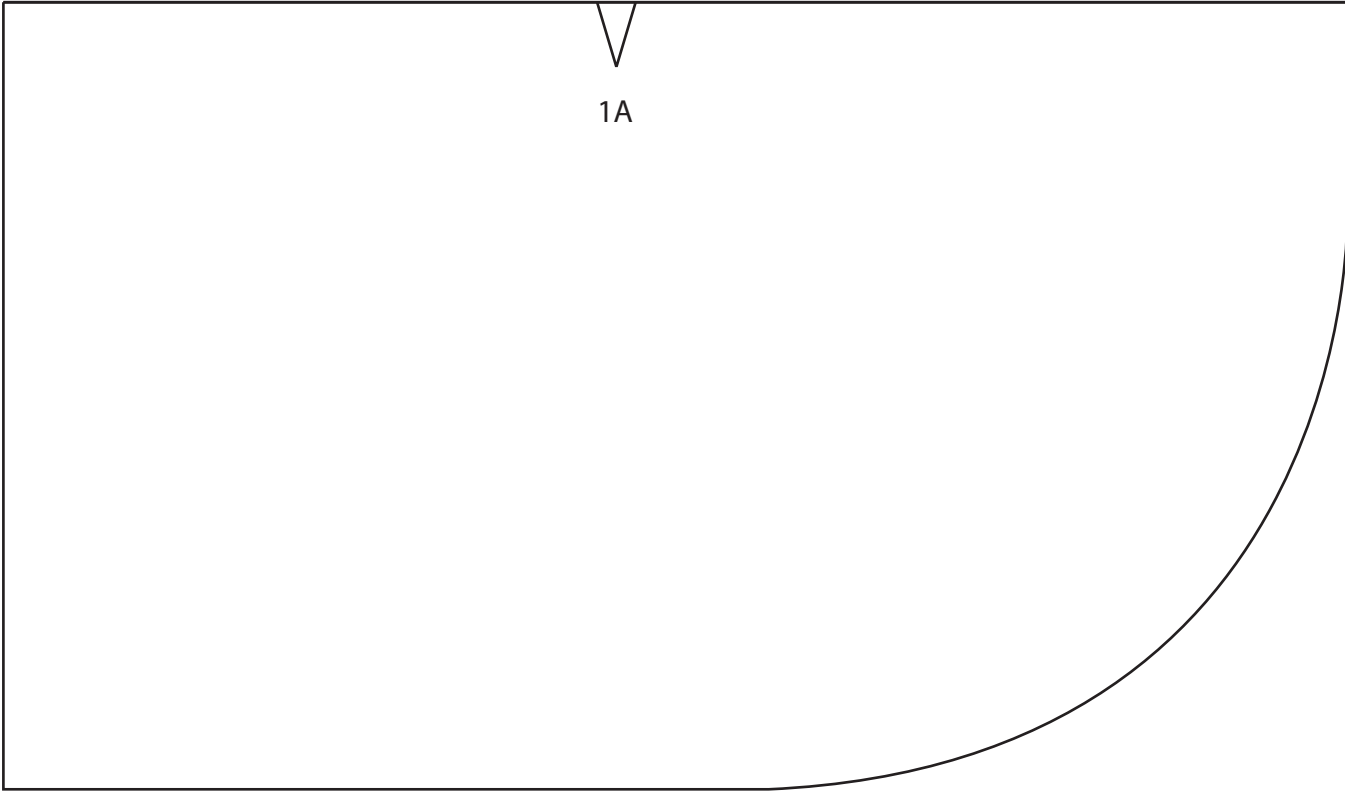
Cut 6 on fold
2 Exterior fabric A
2 Lining fabric
2 Fusible Woven interfacing

[1/2" (12 mm) seam allowance included]

1A



place this edge on fold



1A