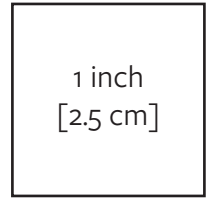
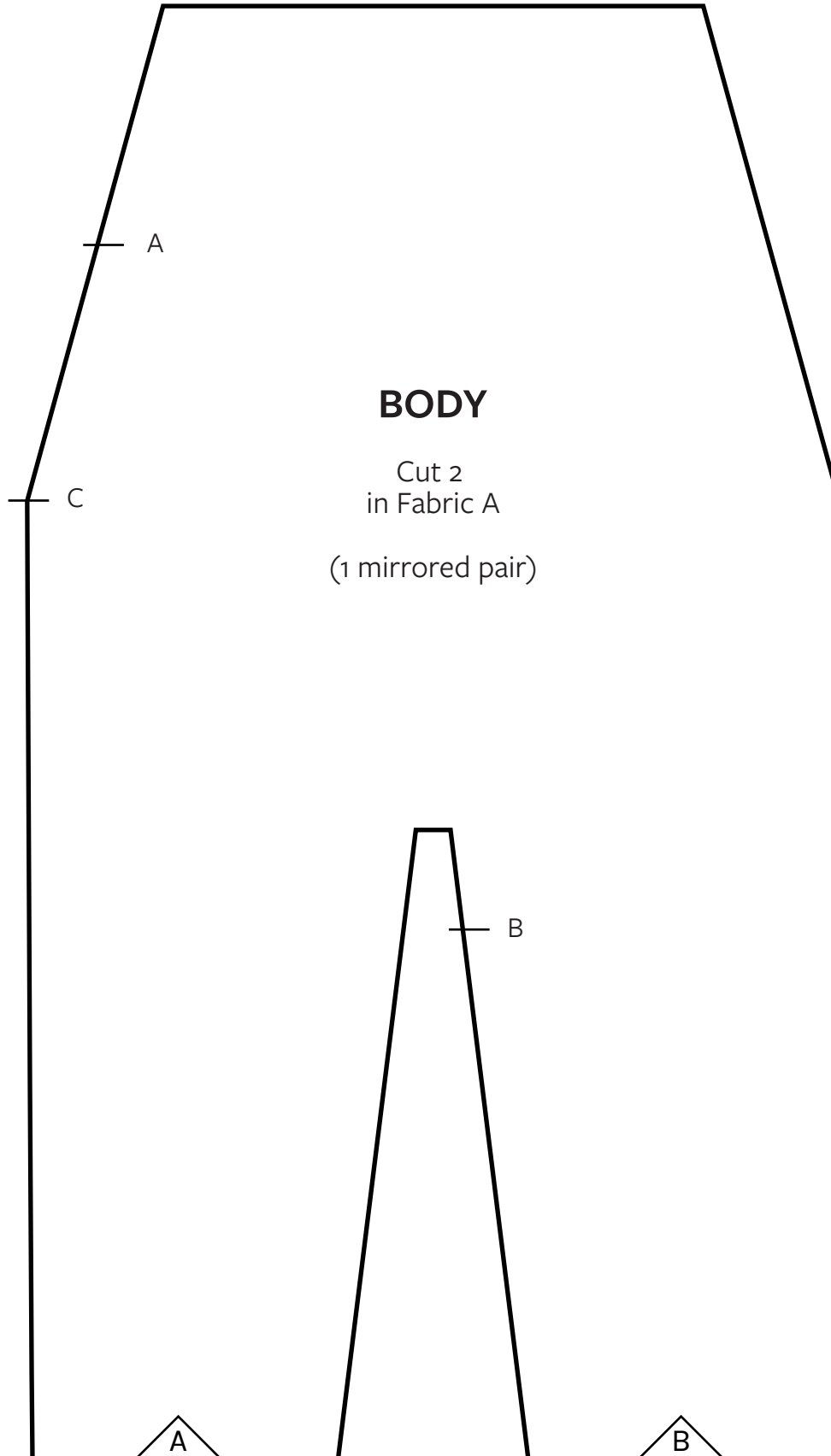


# Fawn Doll

by Katia Ferris

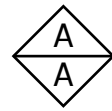


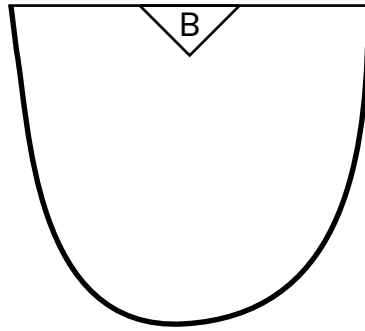
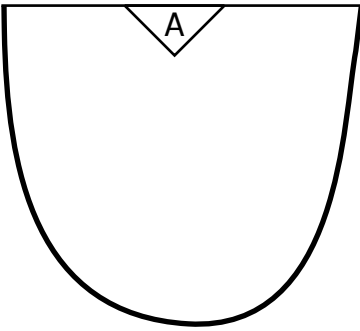
To assemble: match the letters at the page side and tape or glue together



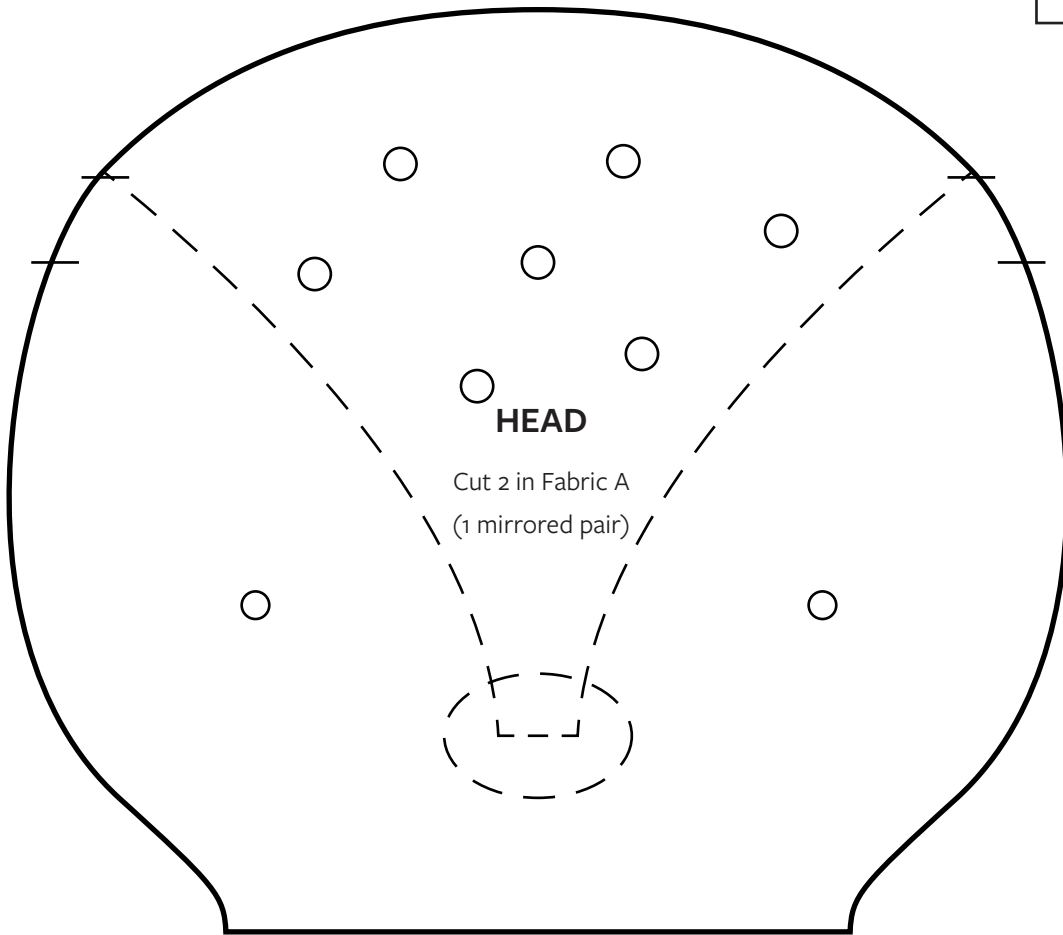
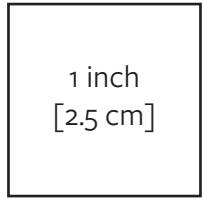
## BODY

Cut 2  
in Fabric A  
(1 mirrored pair)



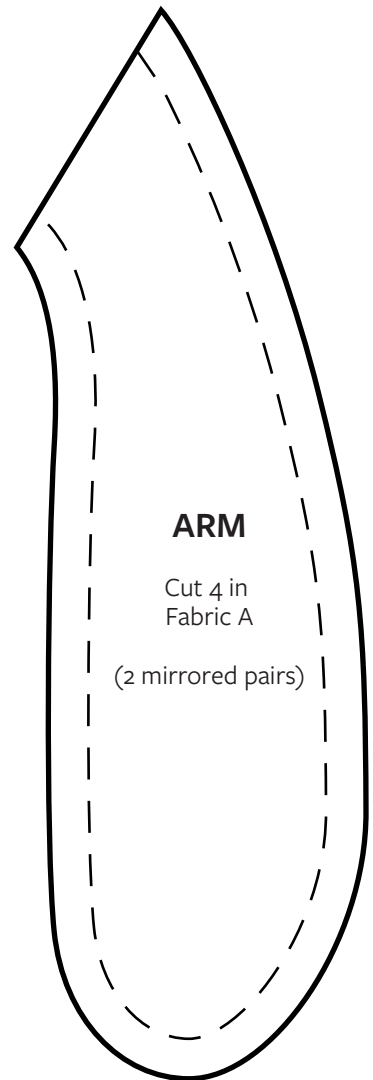
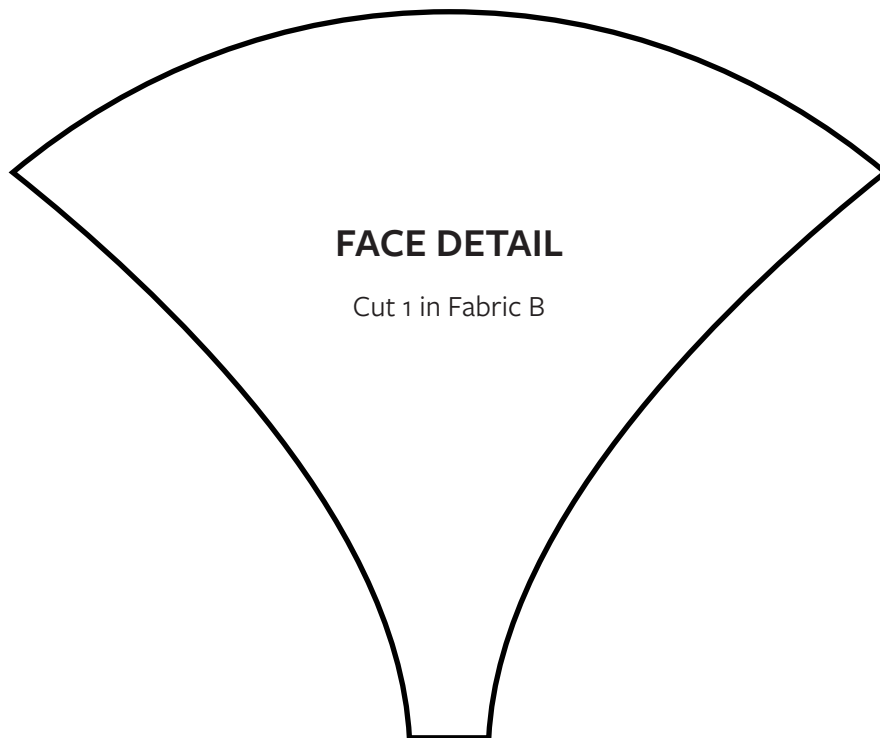
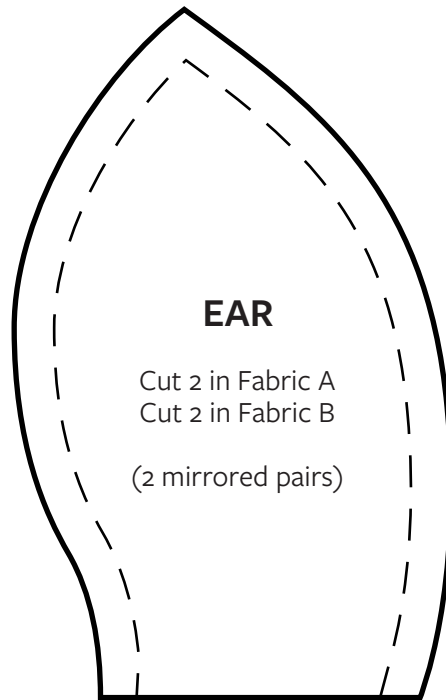
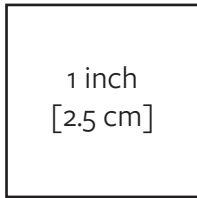


**Fawn Doll**  
by Katia Ferris



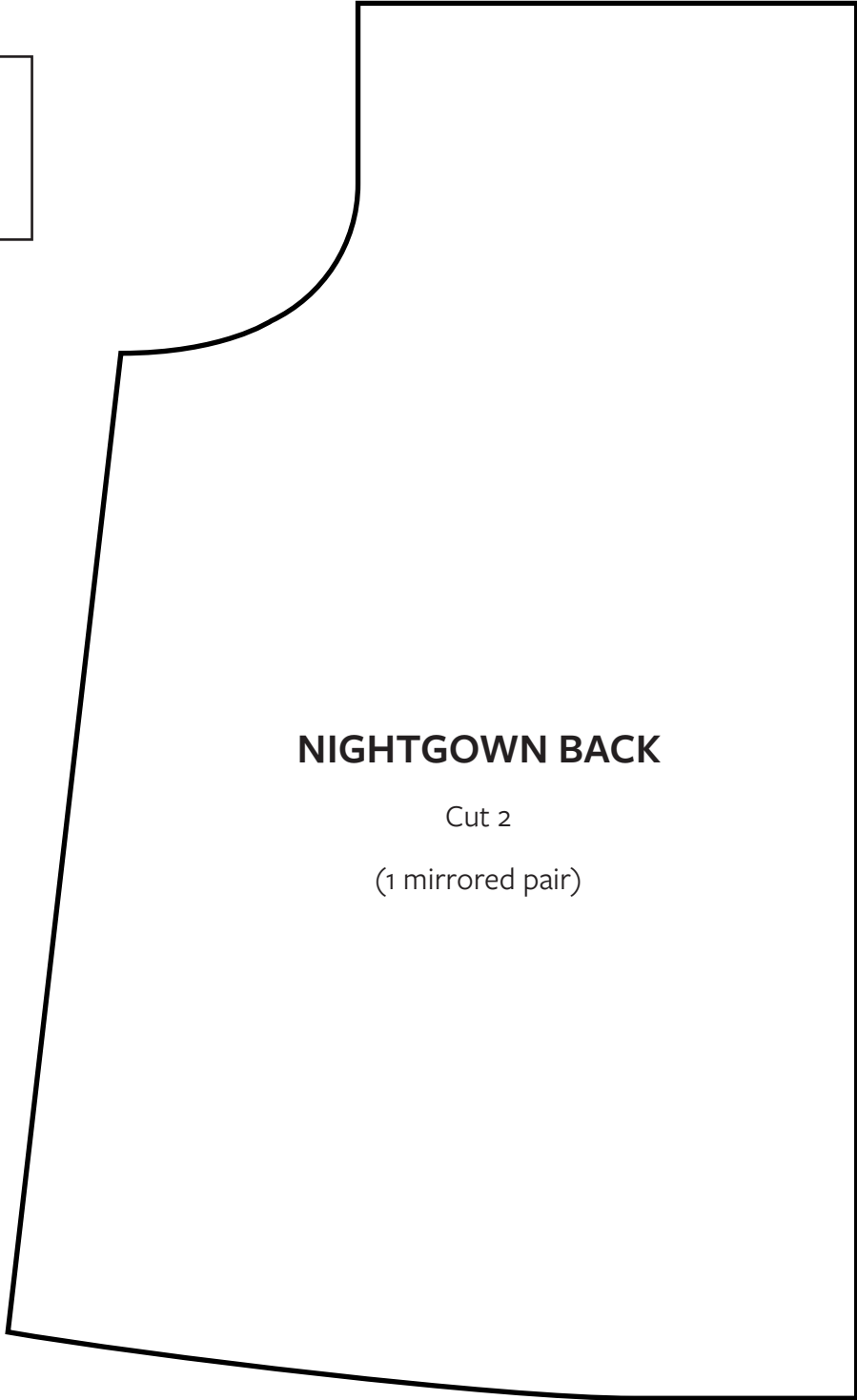
# Fawn Doll

by Katia Ferris



**Fawn Dress**  
by Katia Ferris

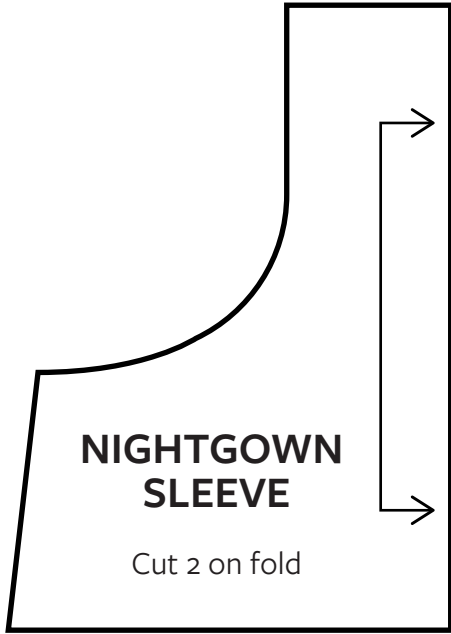
1 inch  
[2.5 cm]



**NIGHTGOWN BACK**

Cut 2

(1 mirrored pair)



**Fawn Dress**  
by Katia Ferris

