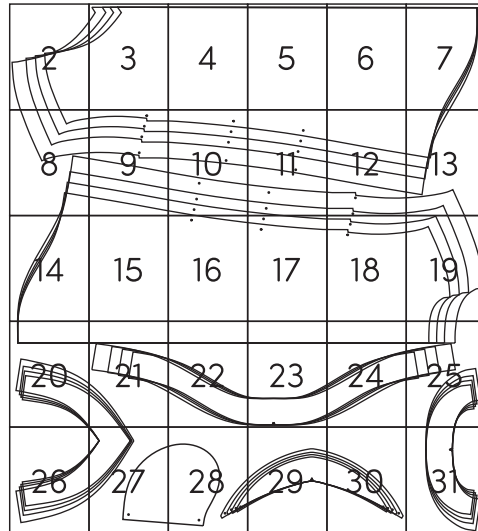


EMERALD

by Rae Hoekstra

PRINTING AND ASSEMBLY

Print at 100% (no scaling) on letter-size or A4 paper. Check your scale using the scale box provided. Cut the excess paper from around the borders and tape the pages together using the assembly diagram here.



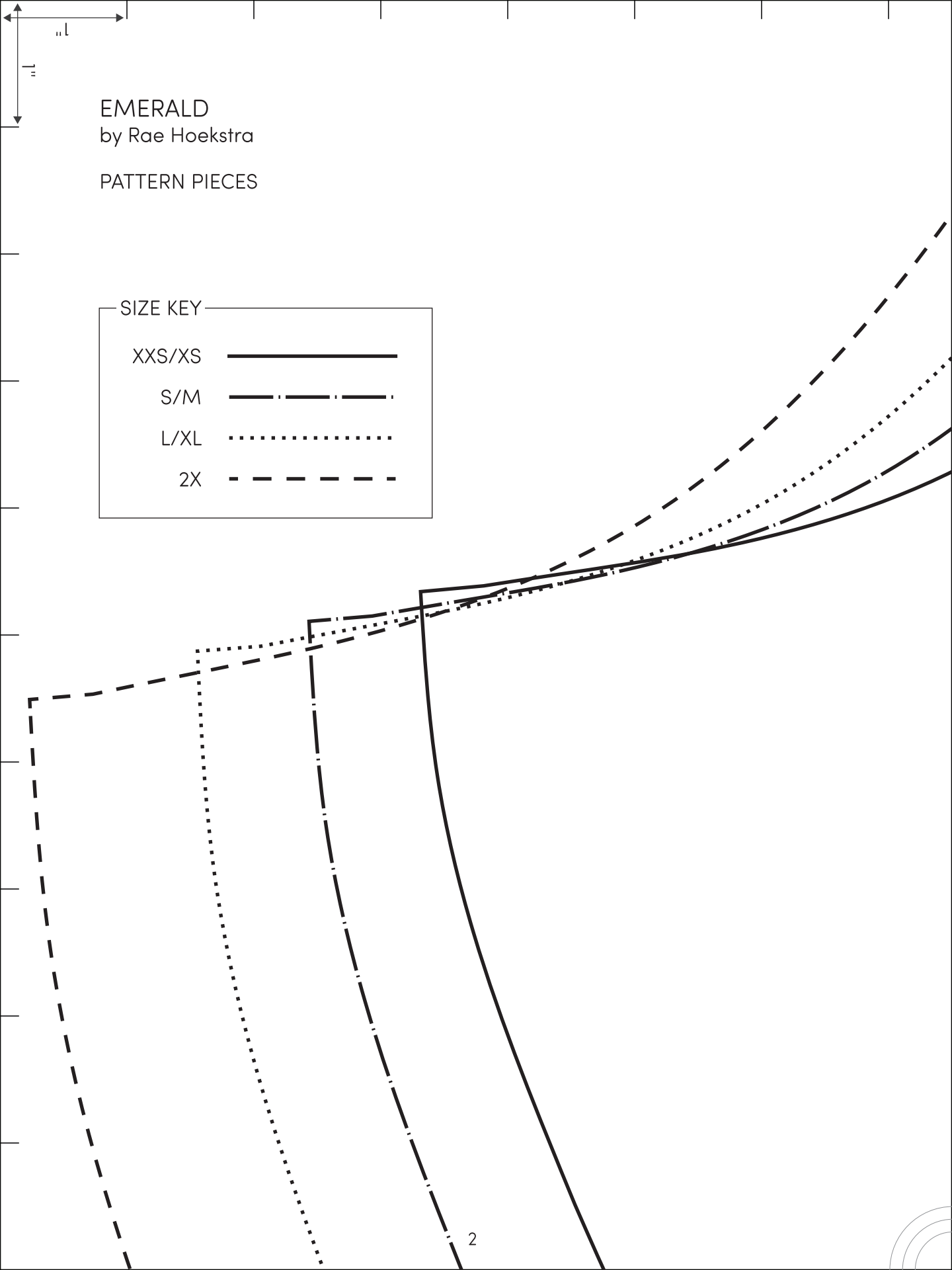
IMPORTANT:

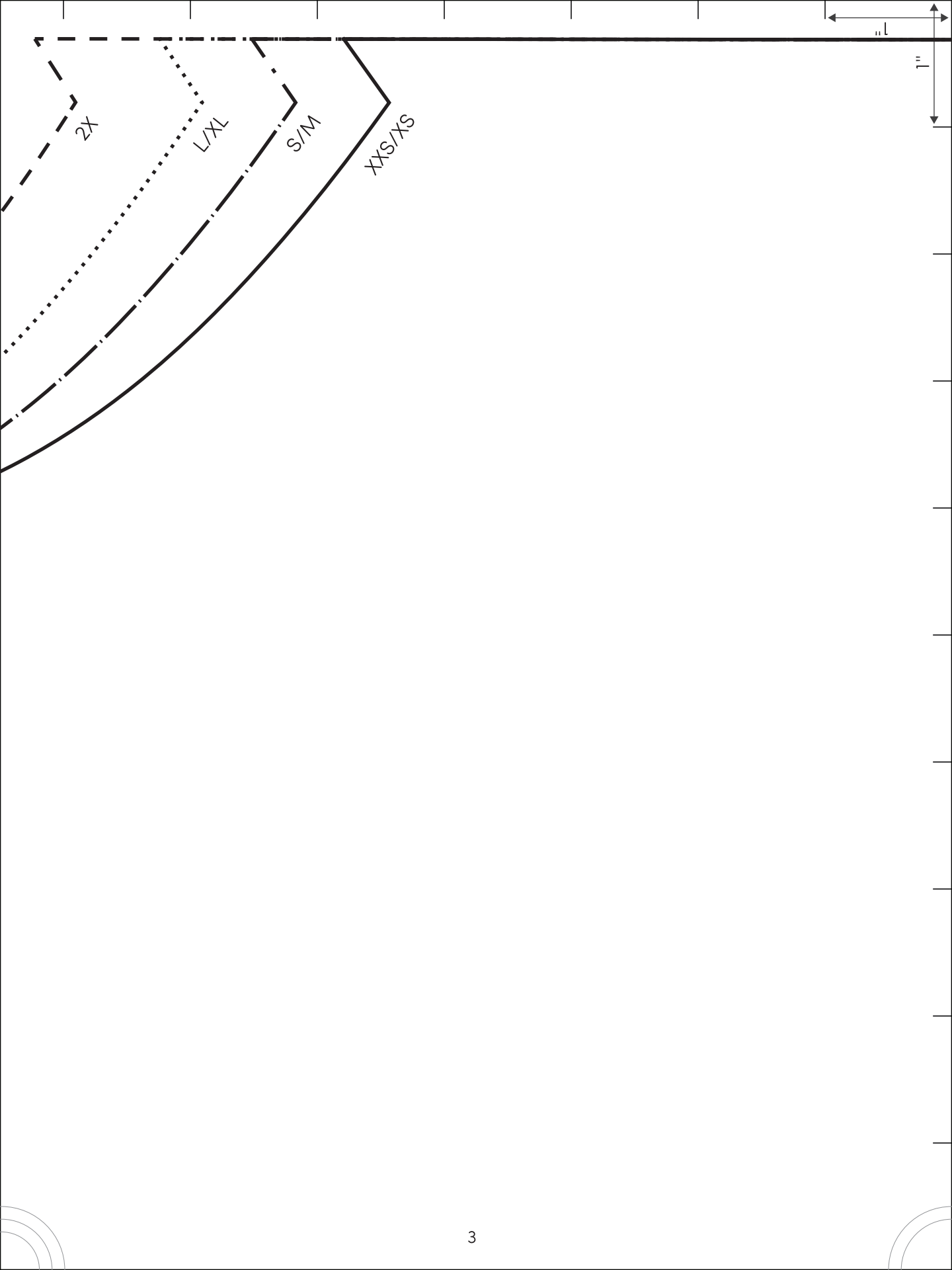
Print at 100% (no scaling).

After printing, carefully measure this scale box and/or the scale markings along the sides of the pattern piece pages to ensure you have printed correctly before cutting into any fabric!

3" x 3"

10 cm x 10 cm





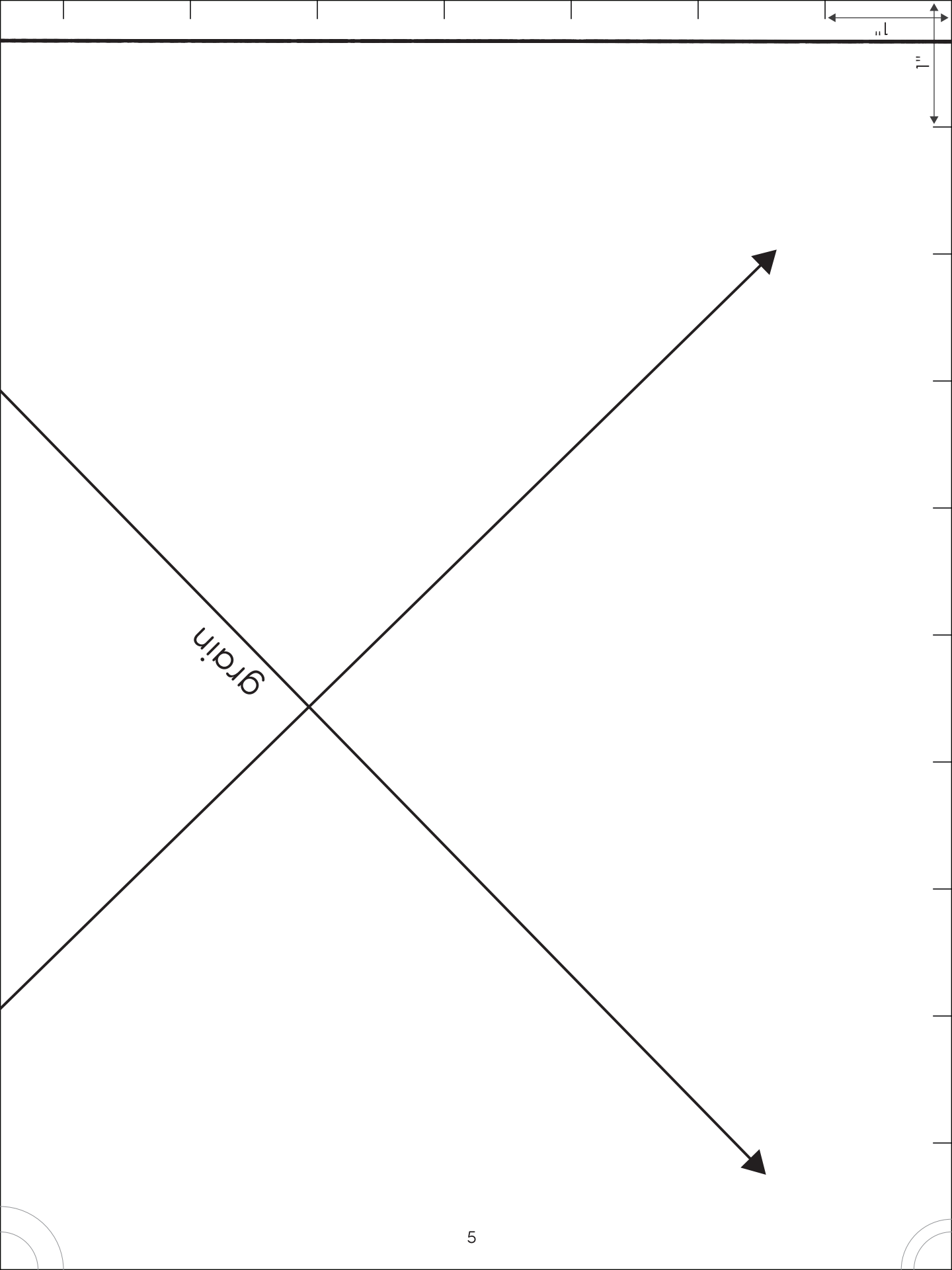
made
by rae
SEWING PATTERNS

Emerald

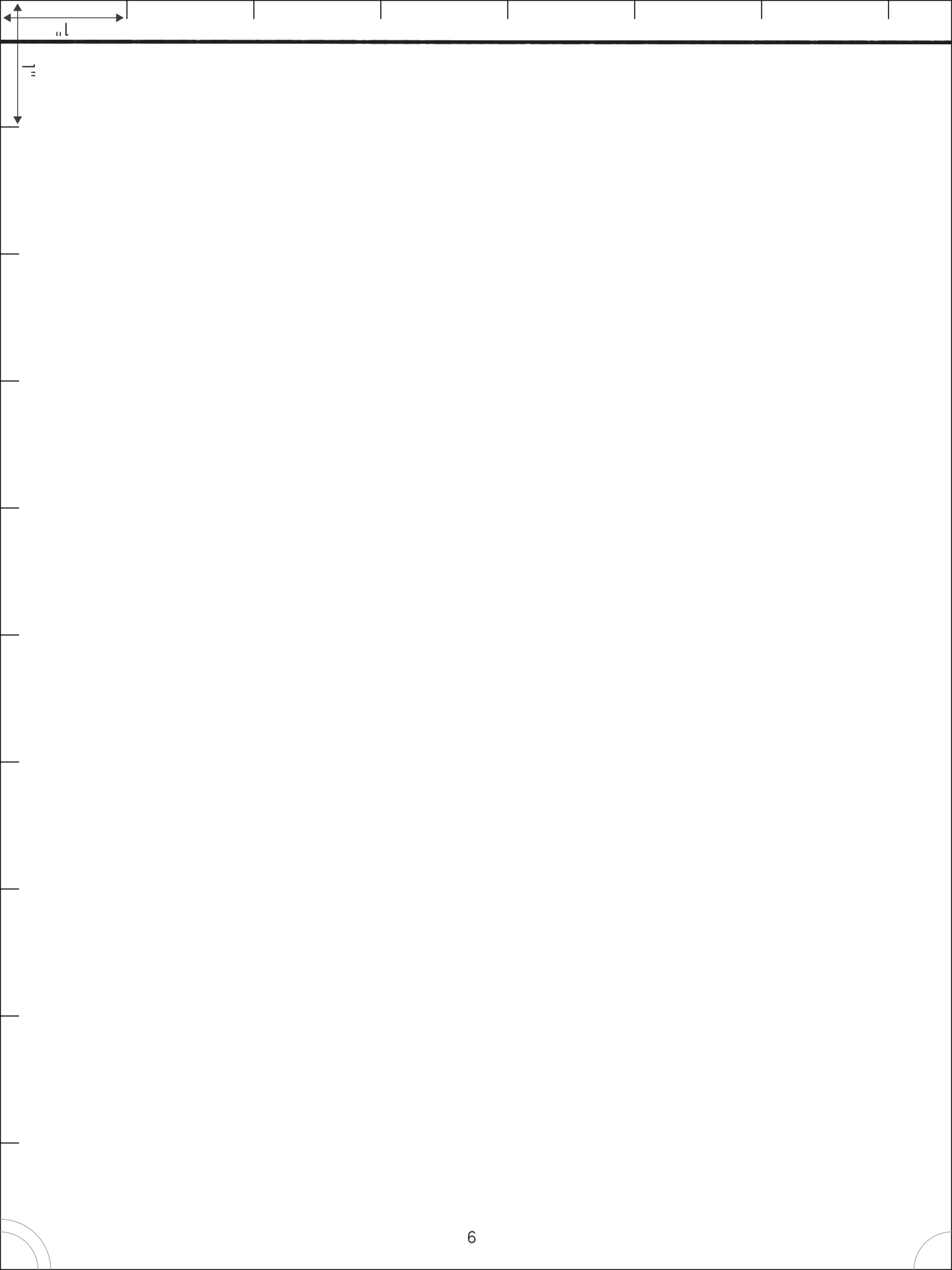
1. FRONT

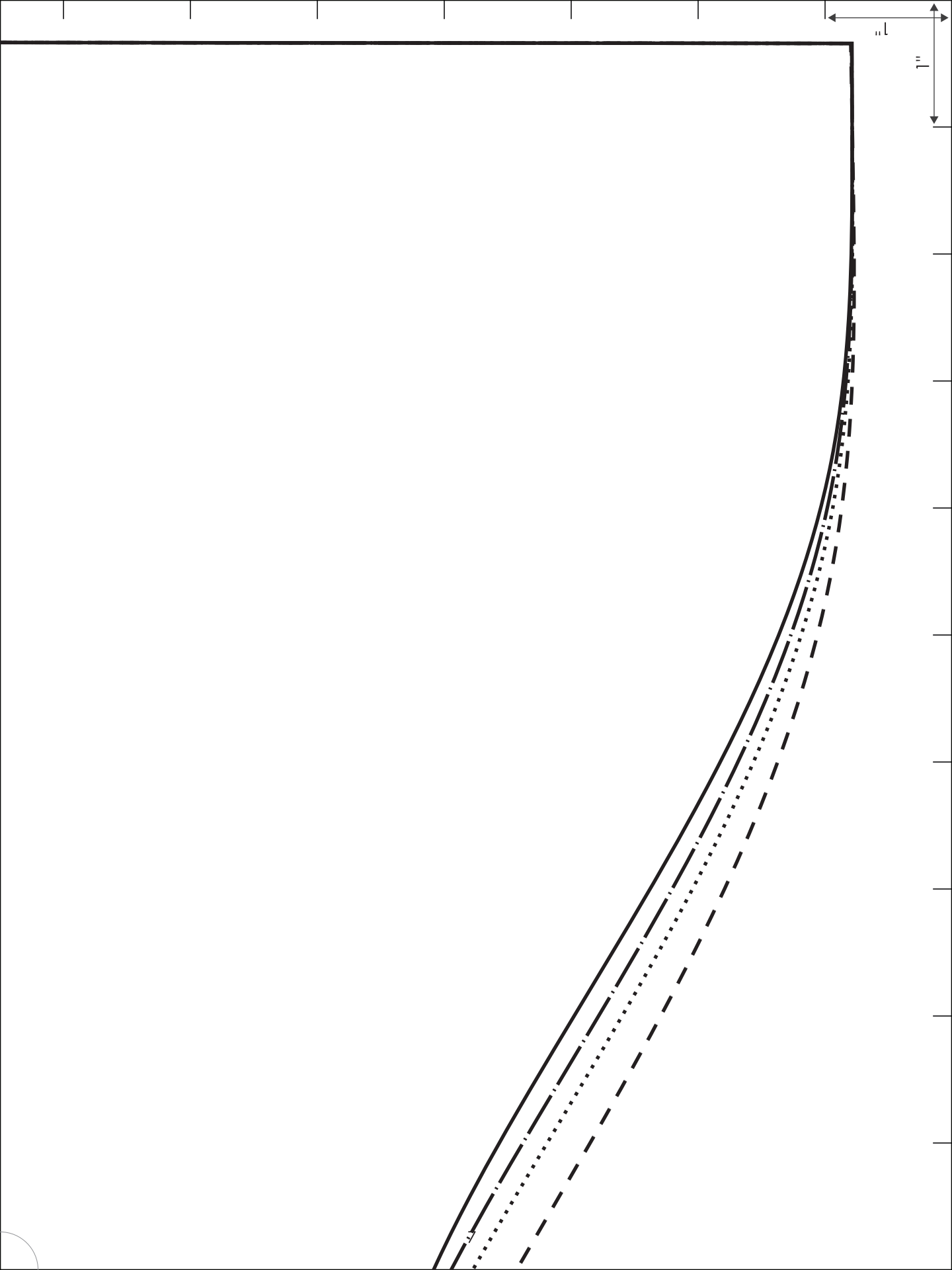
Cut 2 main

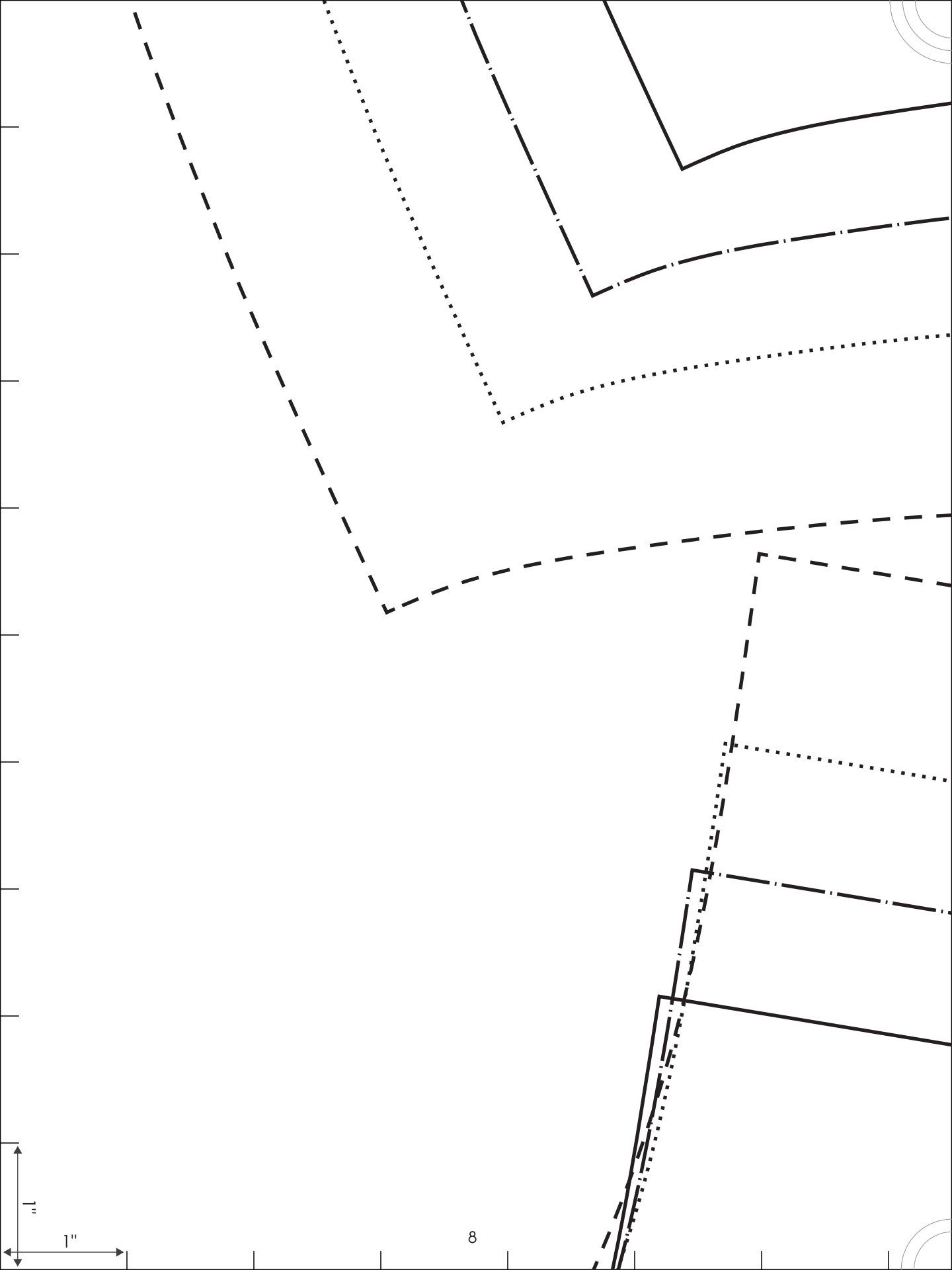


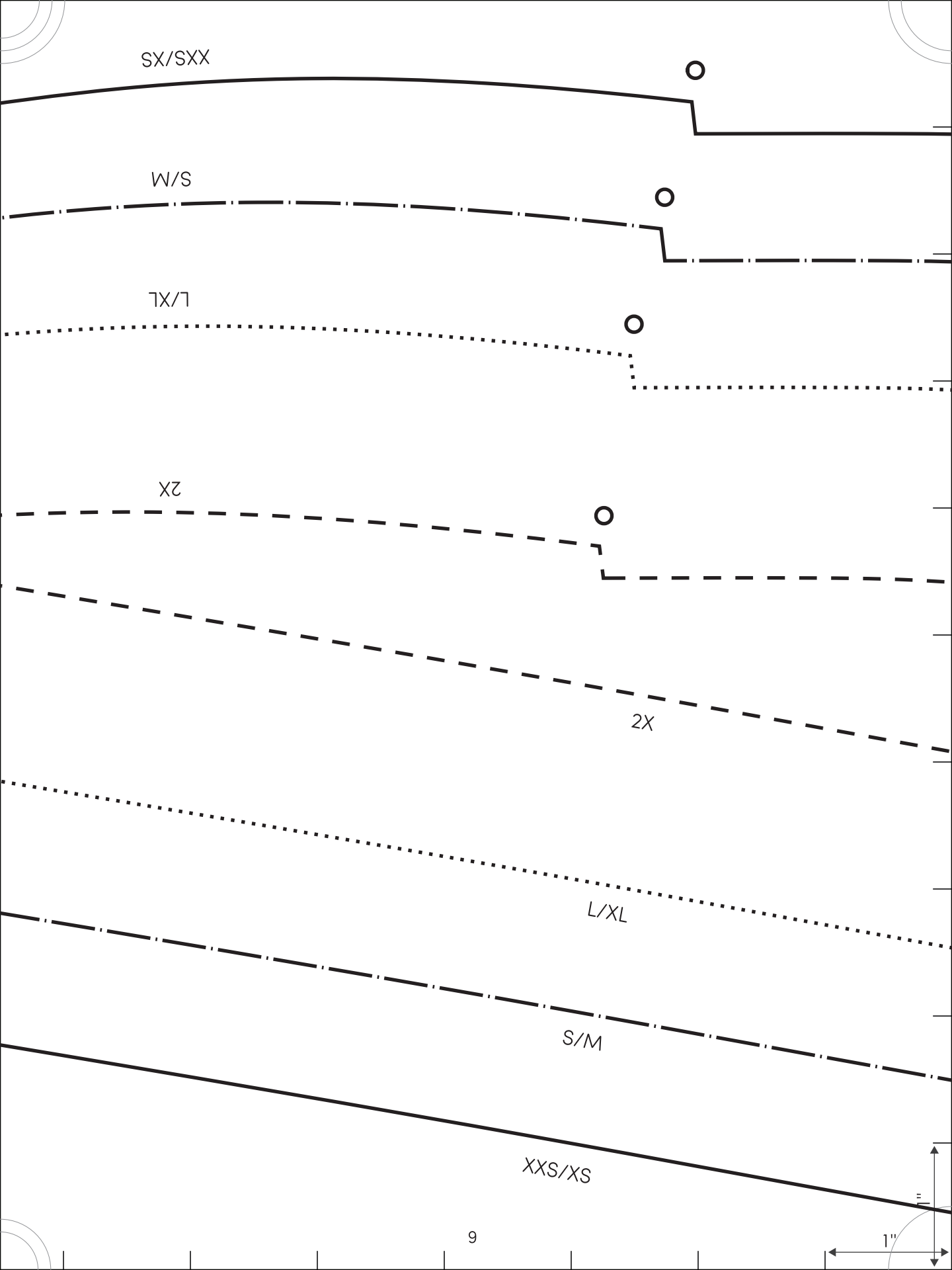


grain









SX/SXX

W/S

XL/L

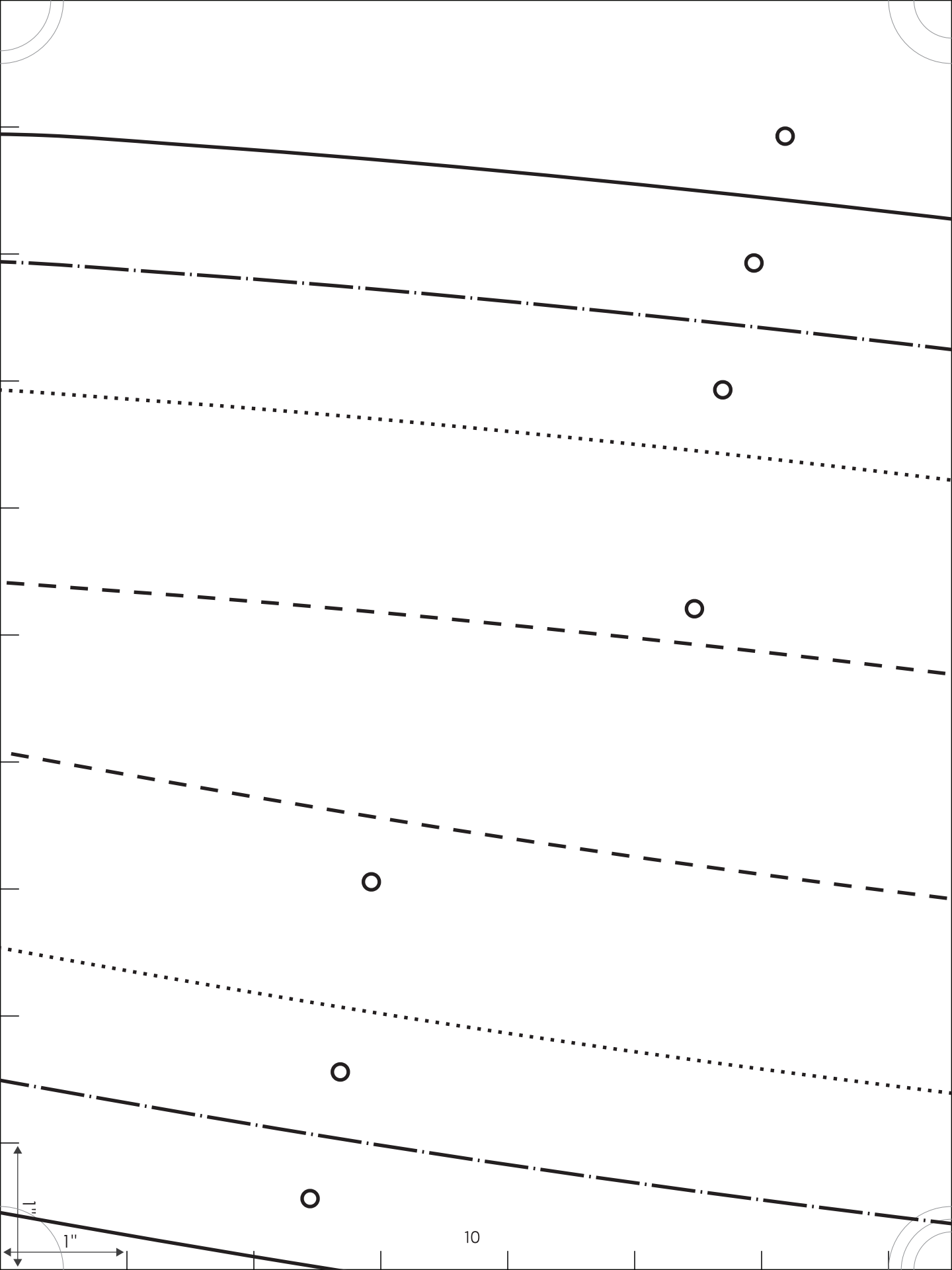
XZ

2X

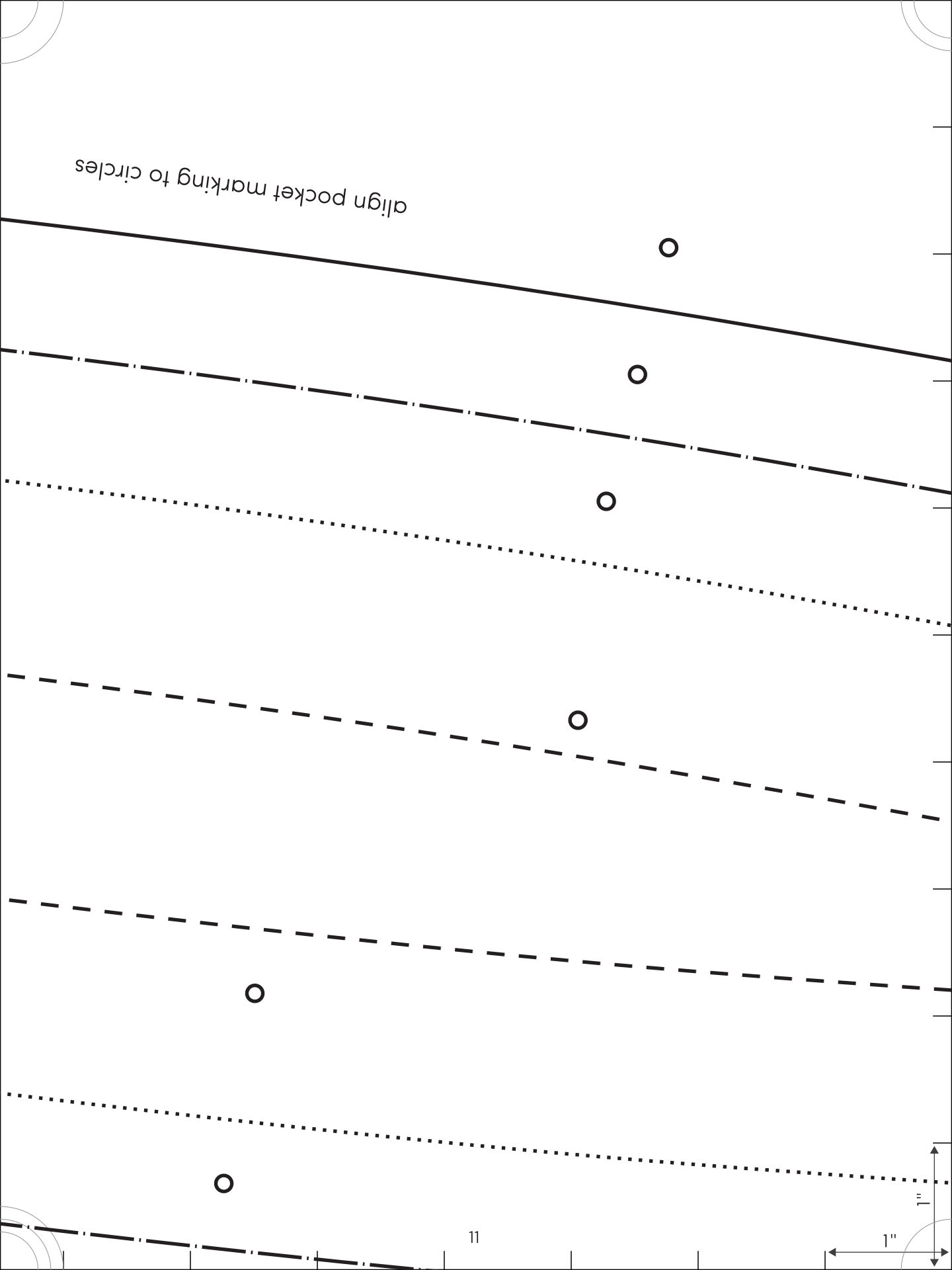
L/XL

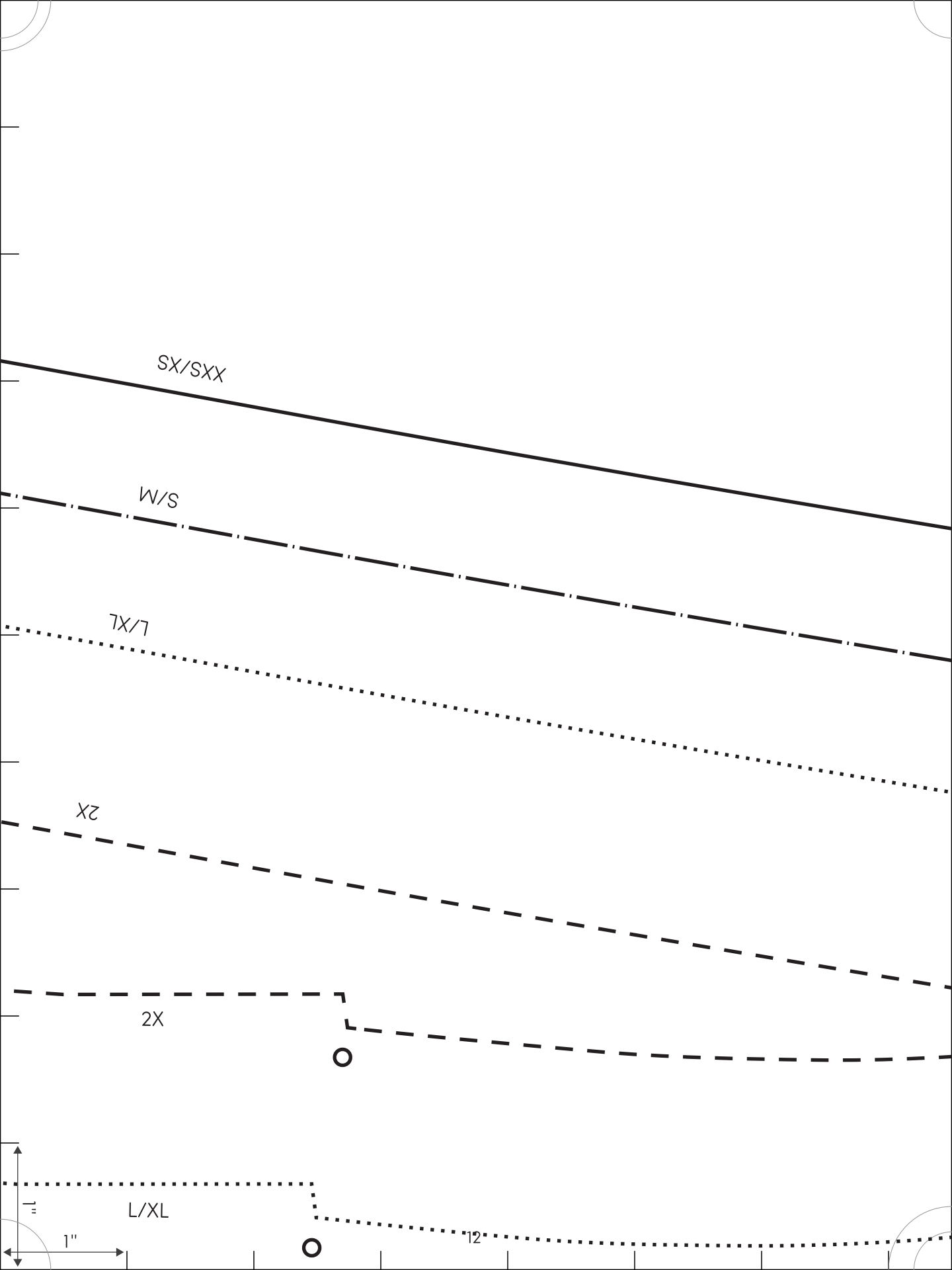
S/M

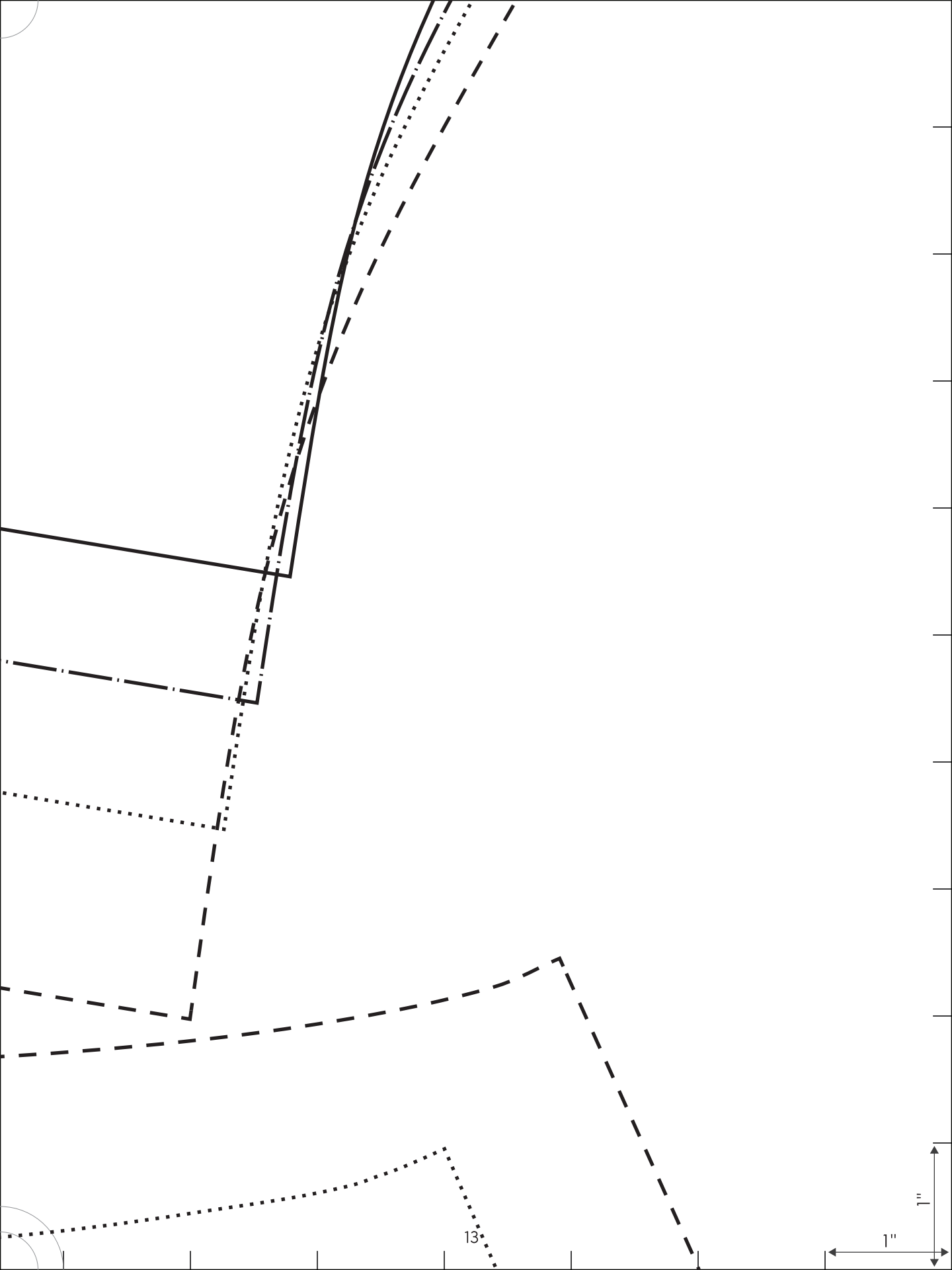
XXS/XS

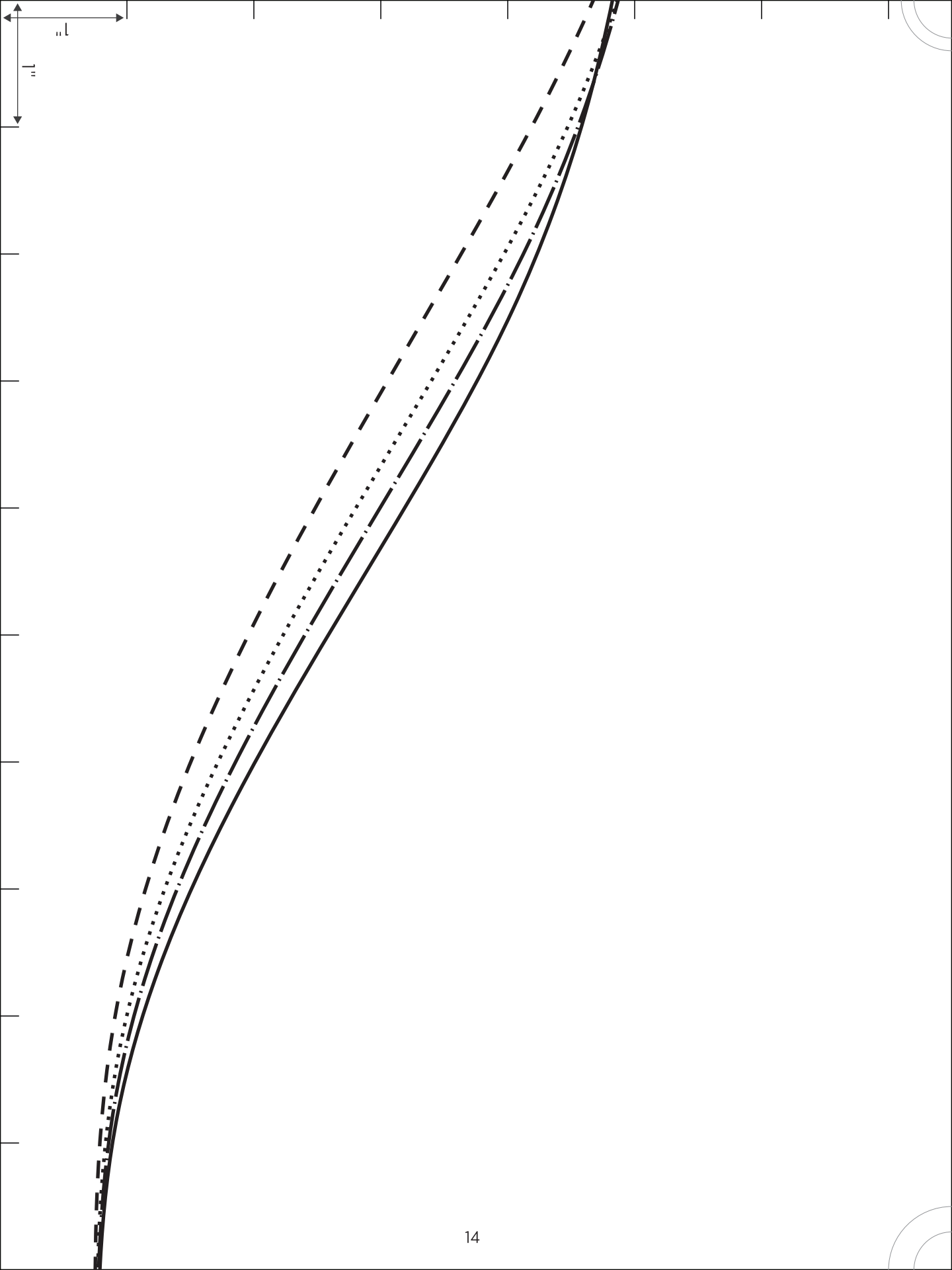


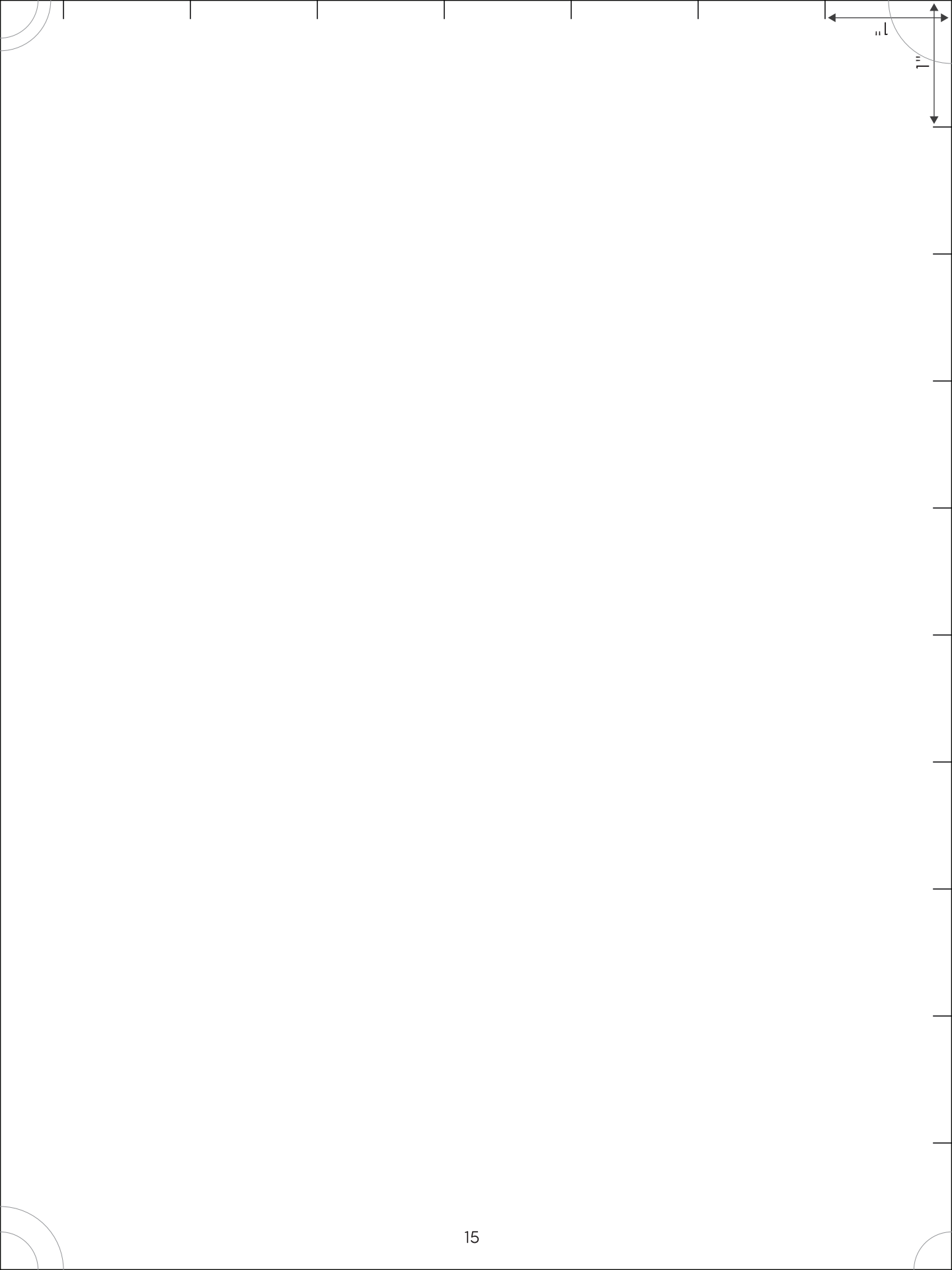
align pocket marking to circles

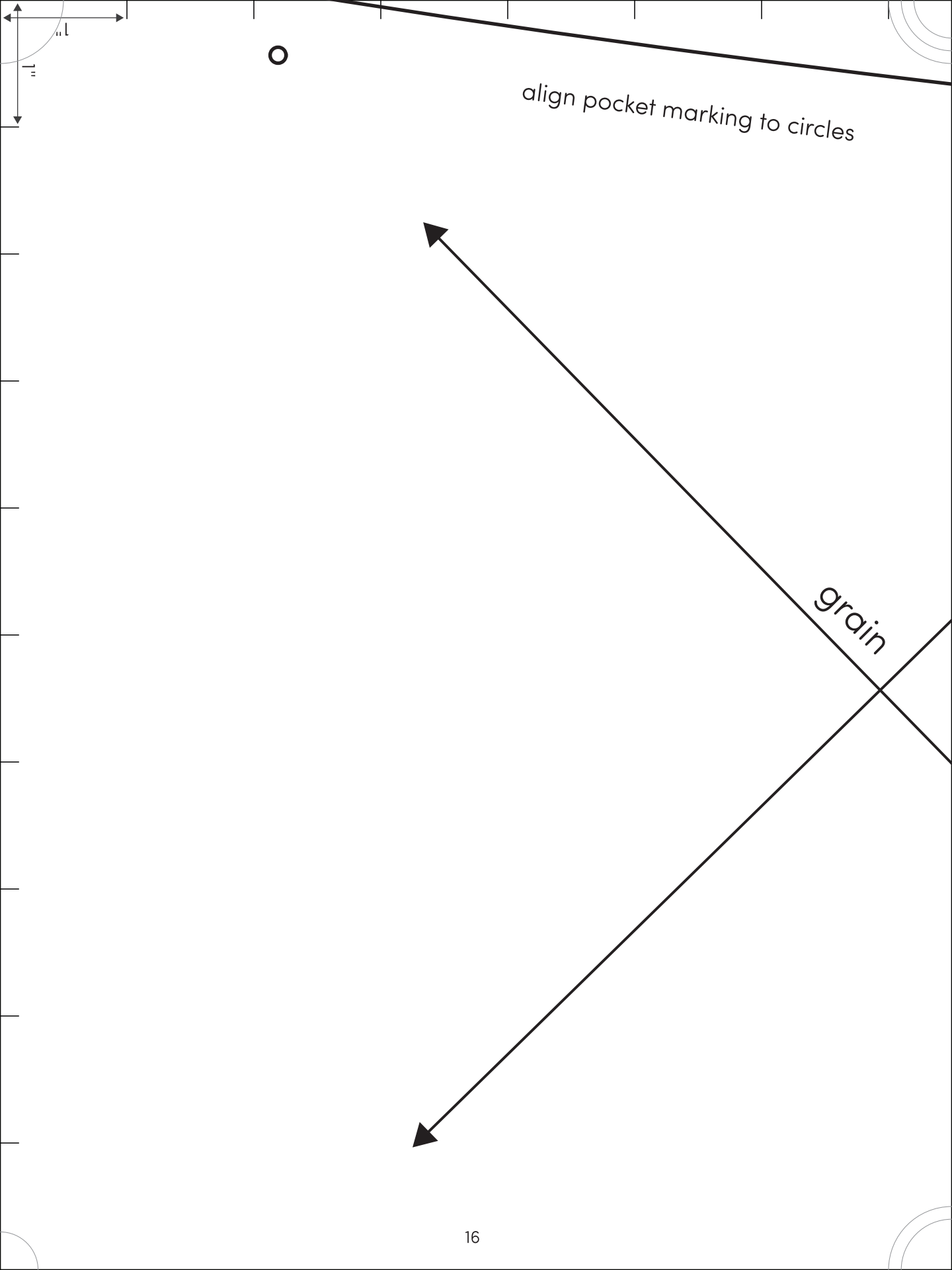








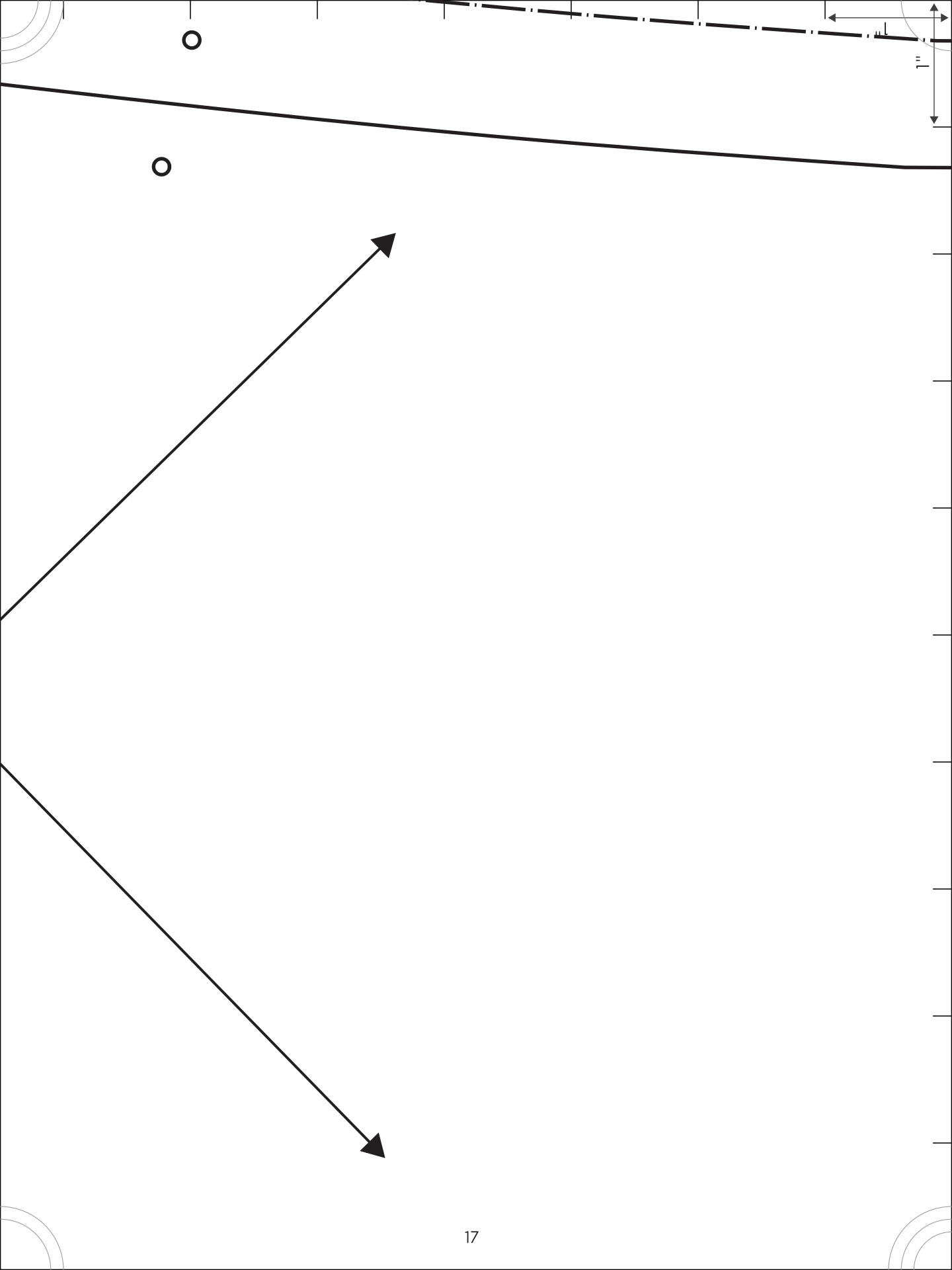


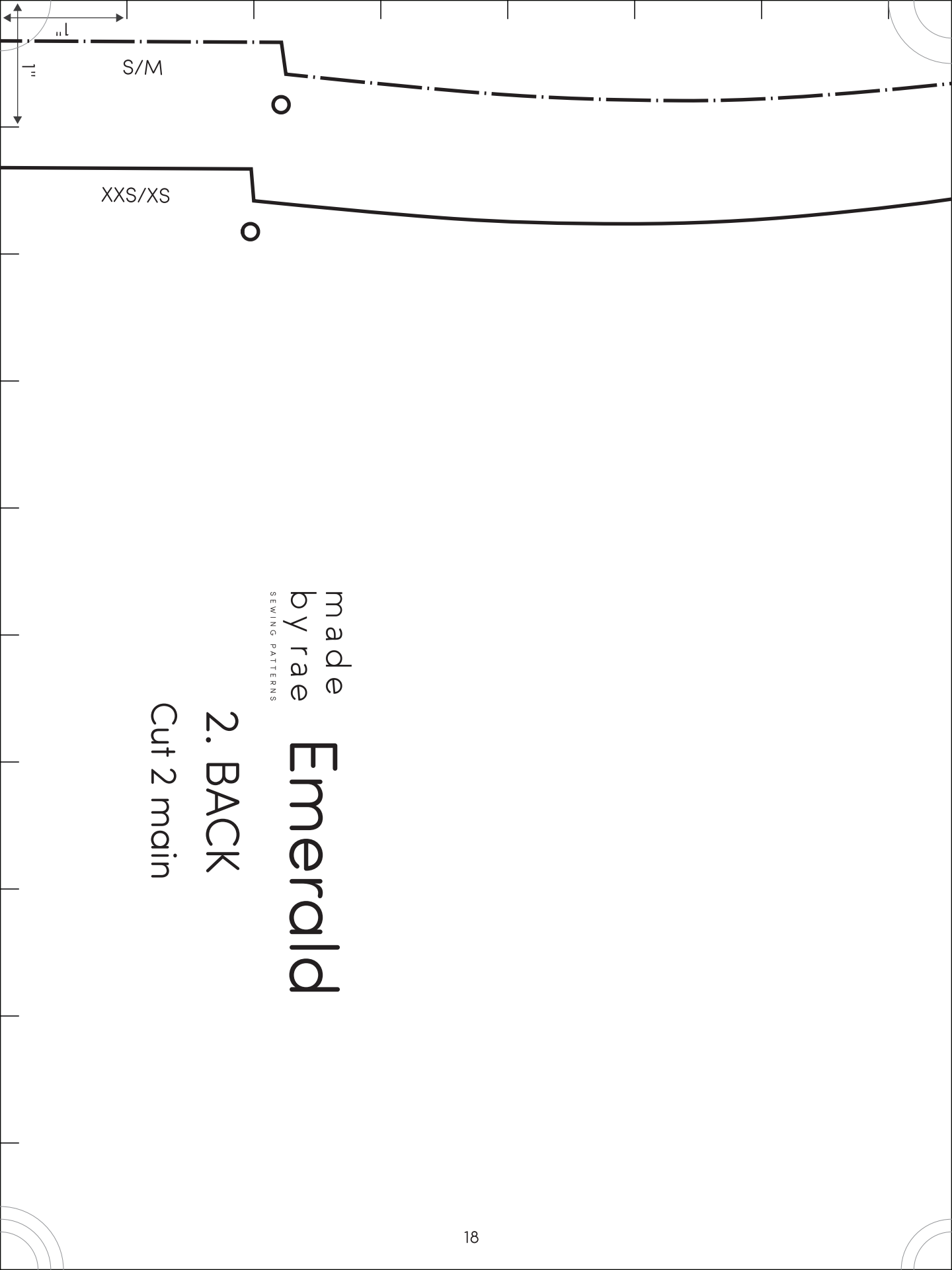


O

align pocket marking to circles

grain



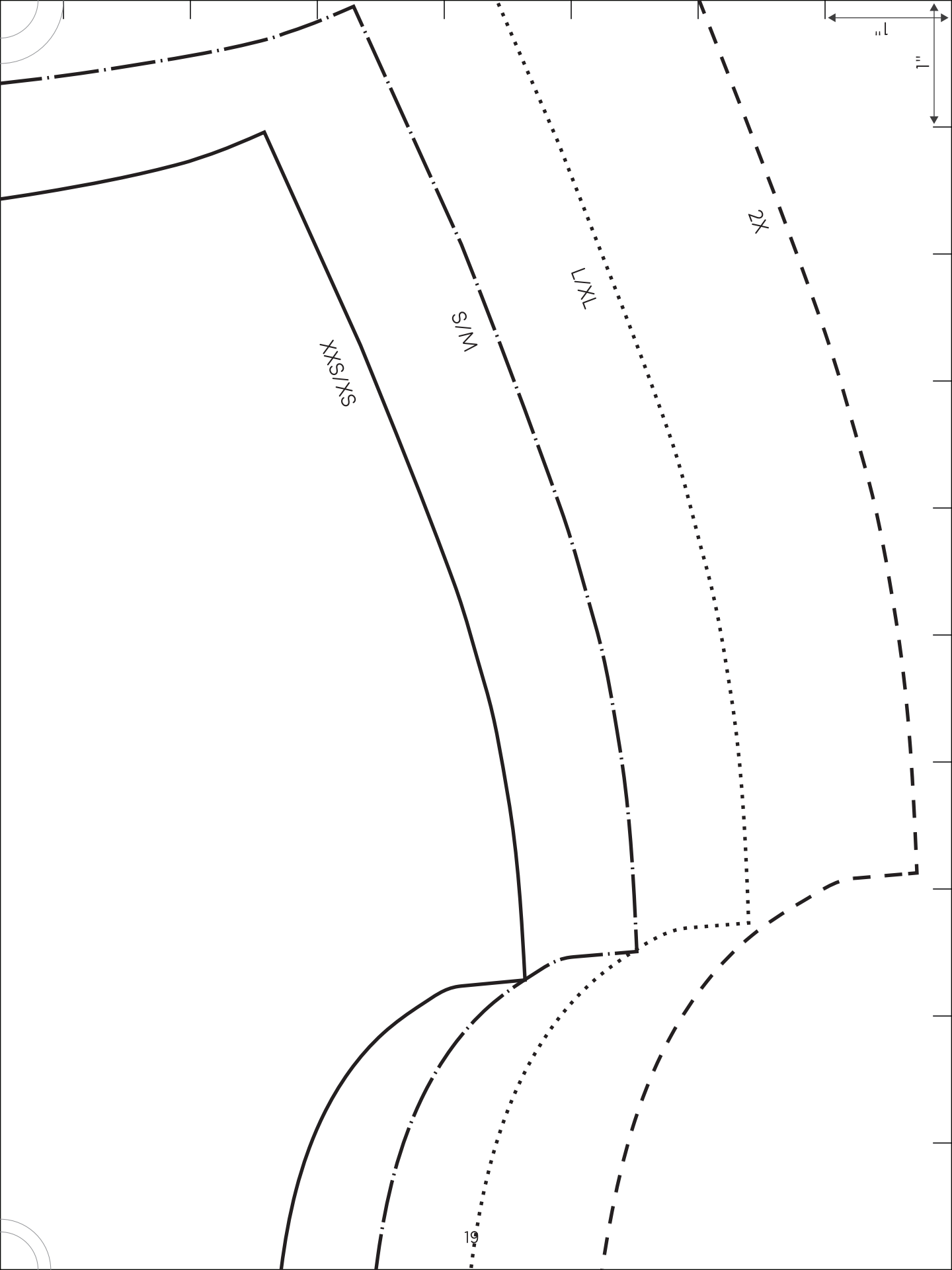


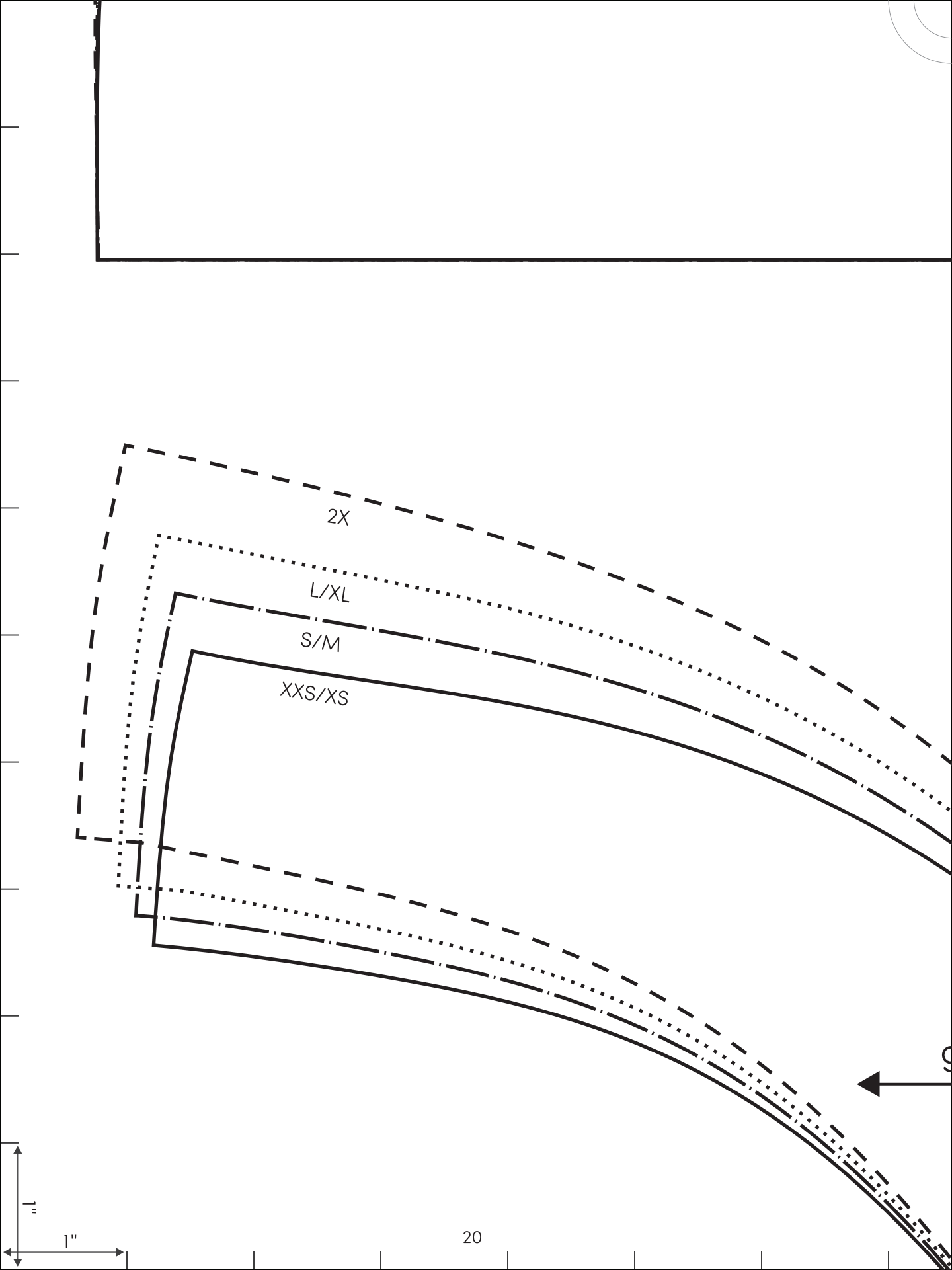
made
by rae
SEWING PATTERNS

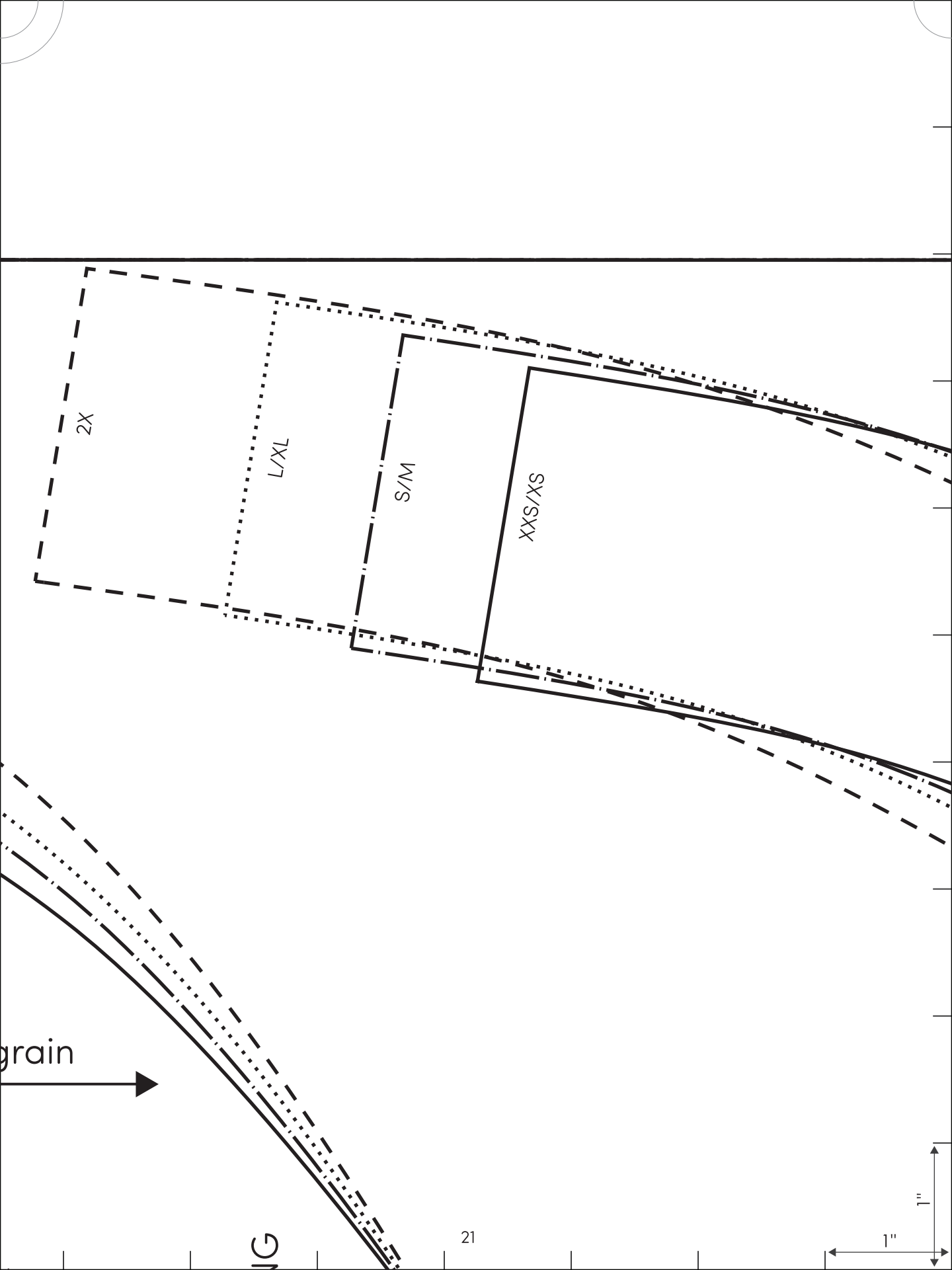
Emerald

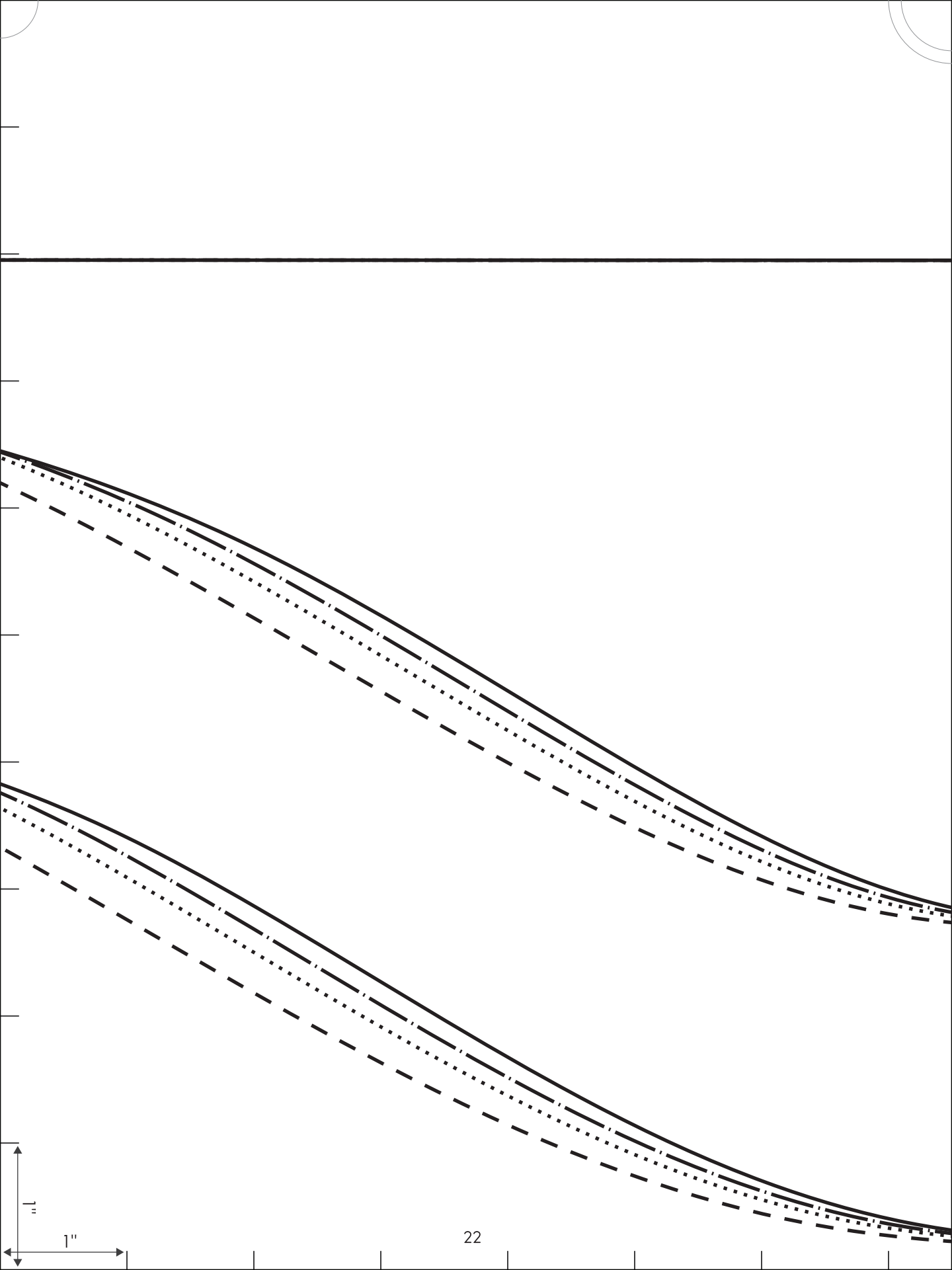
2. BACK

Cut 2 main









made
by rae
SEWING PATTERNS

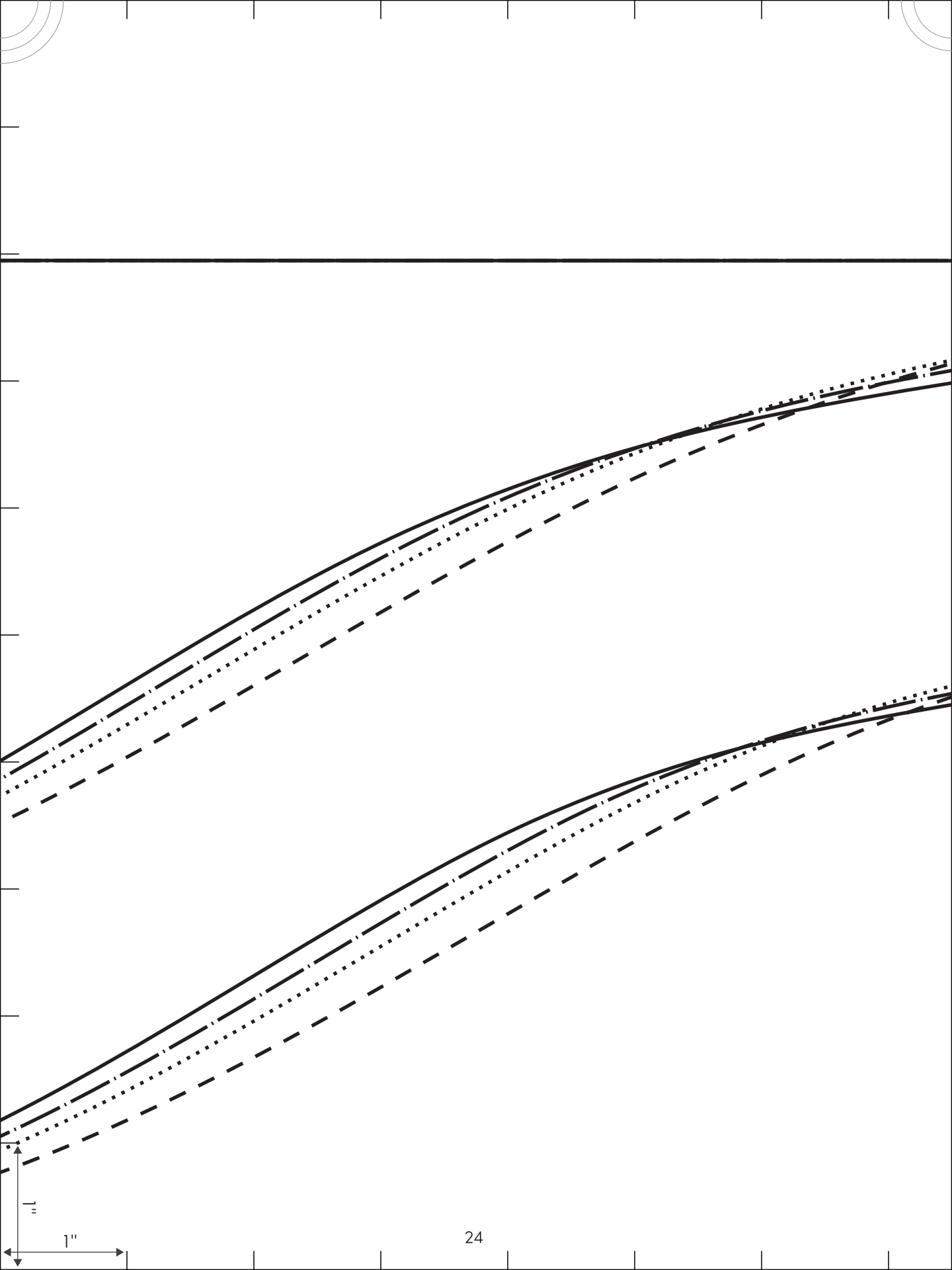
Emerald

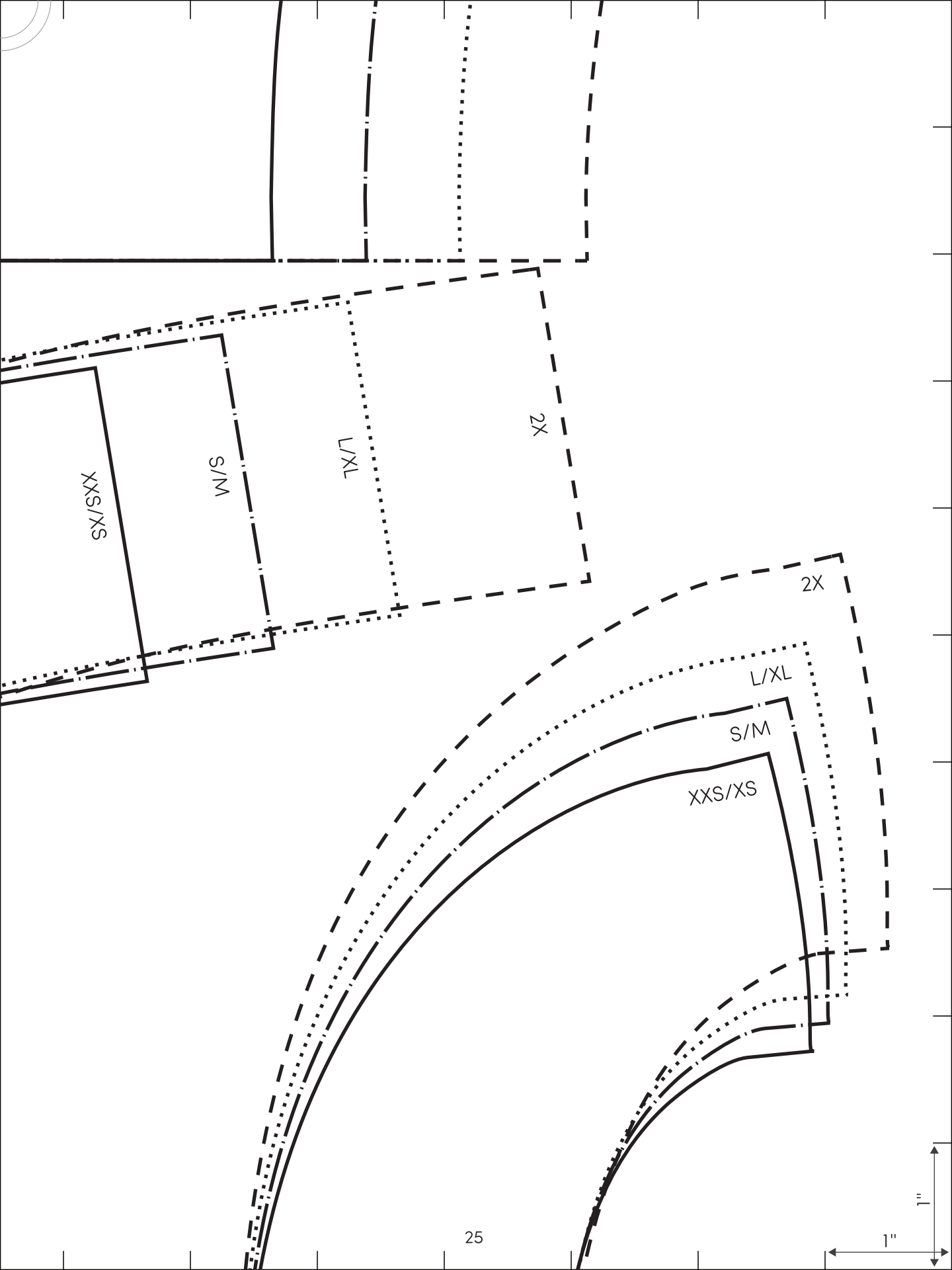
7. HEM FACING

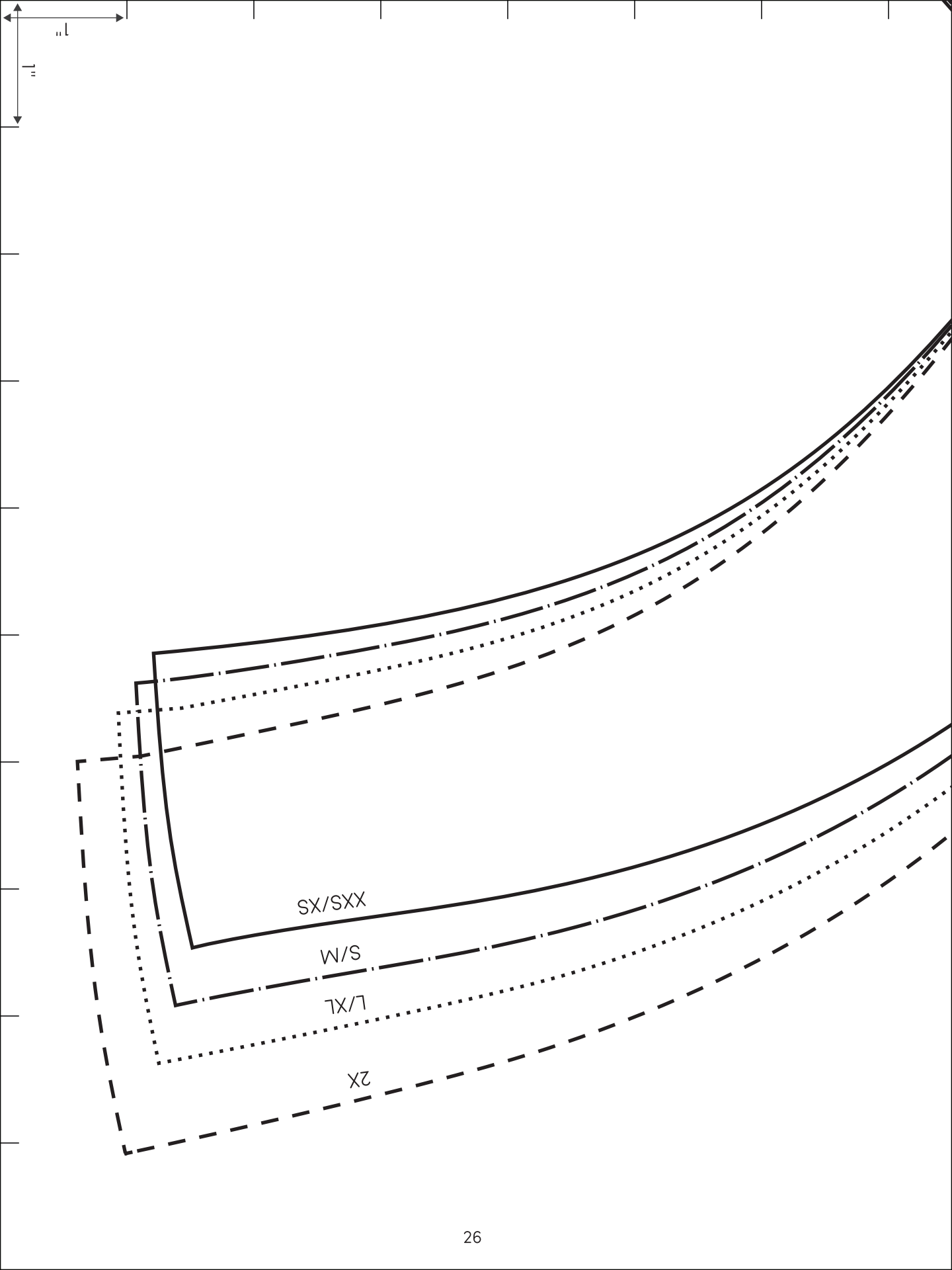
Cut 2 main

Cut 4 interfacing

grain







made
by rae

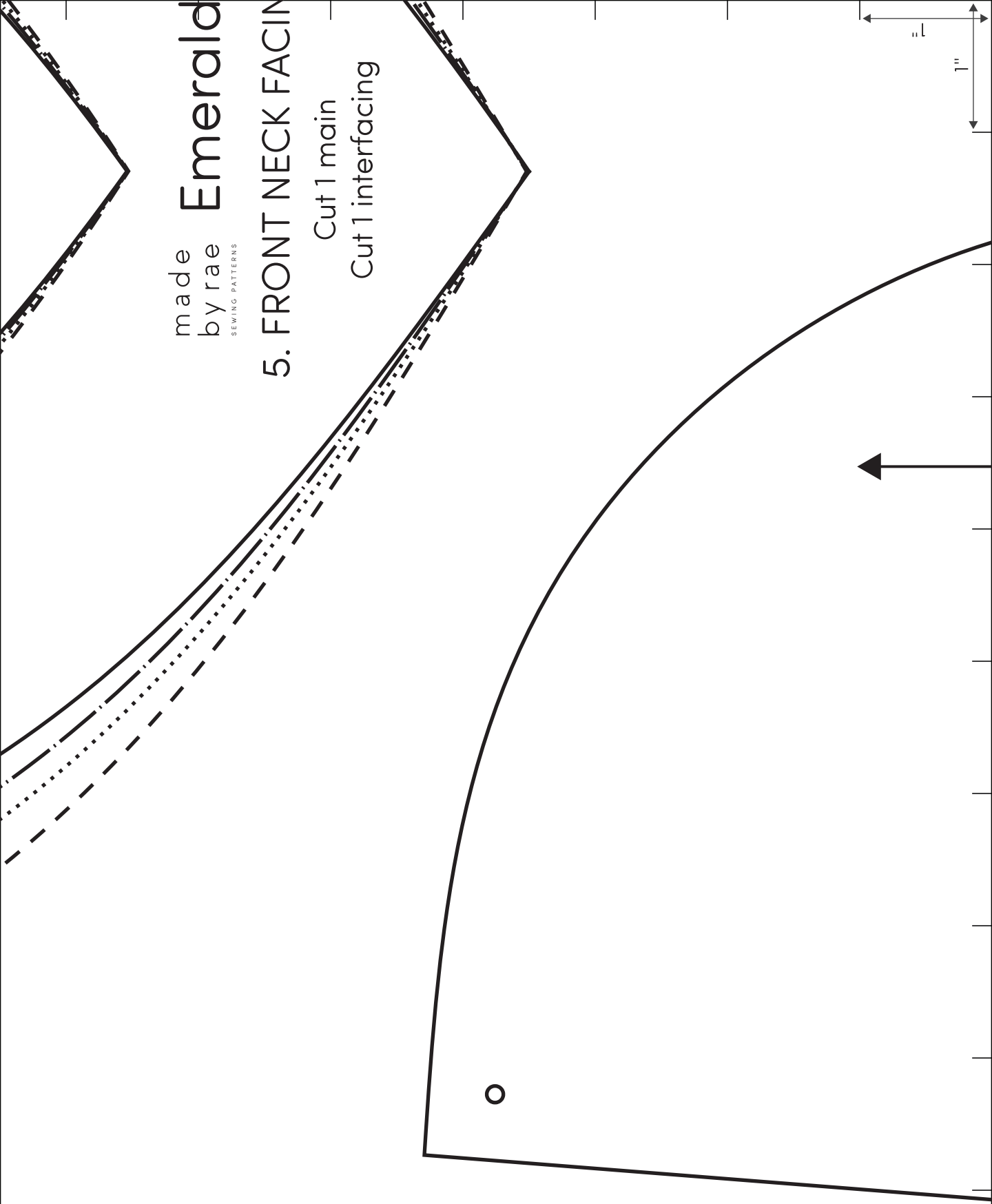
SEWING PATTERNS

Emerald

5. FRONT NECK FACINGS

Cut 1 main

Cut 1 interfacing



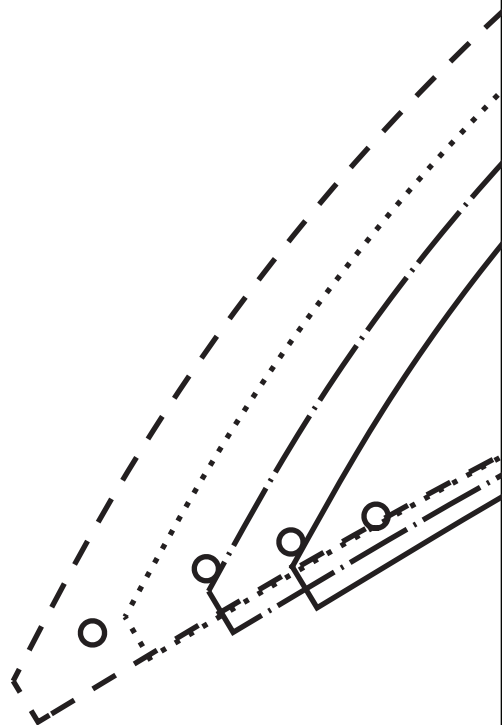
made
by rae
SEWING PATTERNS

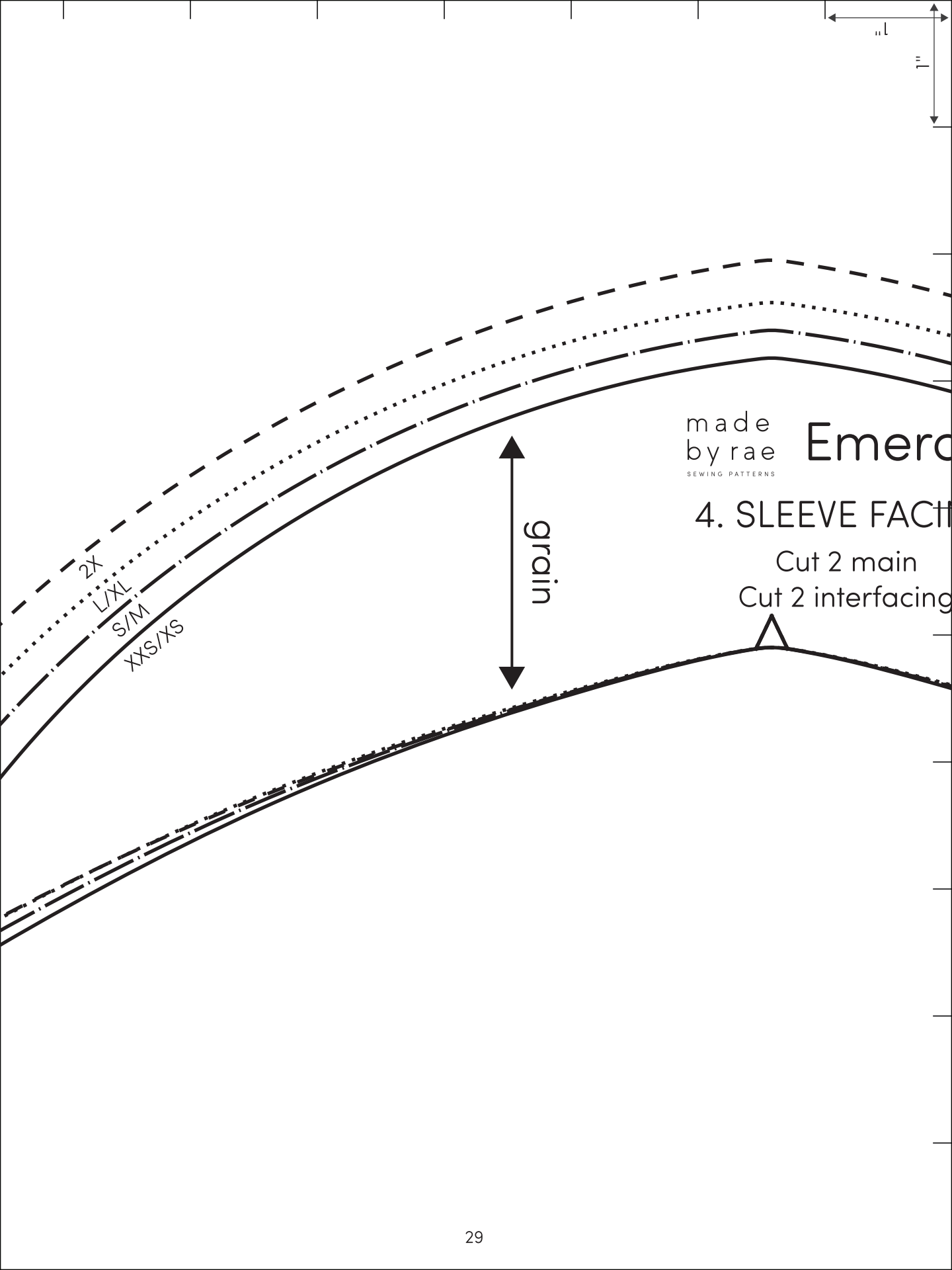
Emerald

3. POCKET – all sizes

Cut 4 main

grain





made
by rae
SEWING PATTERNS

Emerald

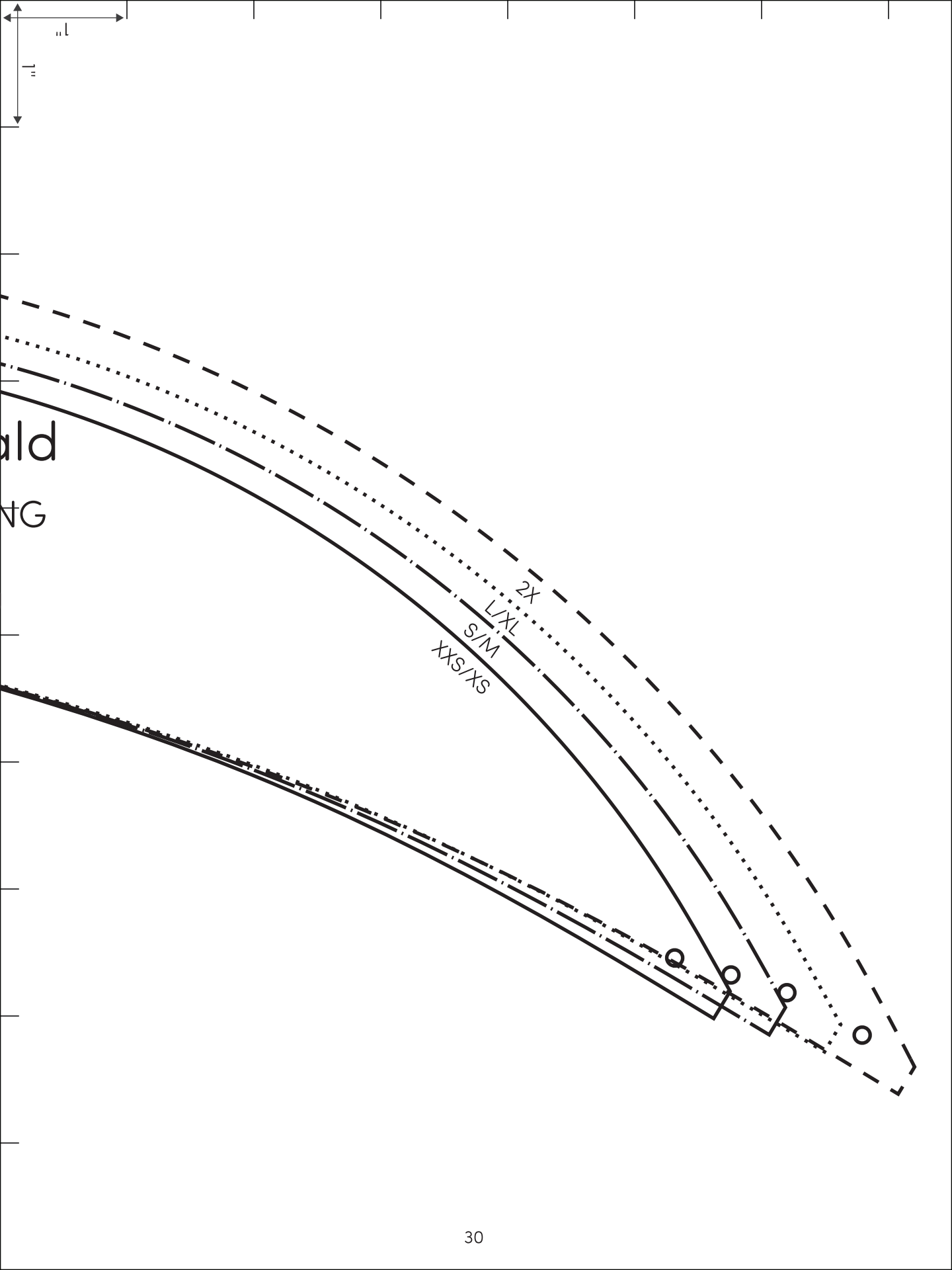
4. SLEEVE FACI

Cut 2 main

Cut 2 interfacing

grain

2X
L/XL
S/M
XXS/XS



ald
NG

1" 1"

grain

made
by rae
SEWING PATTERNS

Emerald

6. BACK NECK FACING

Cut 1 main

Cut 1 interfacing

SX/SXX

S/M

L/XL

2X