

ANOVA

CONNECTING THE INDUSTRIAL WORLD - FOR BETTER

ANOVA UTM™

UTM

ANOVA UNIVERSAL TANK MONITOR™

The Anova Universal Tank Monitor (Anova UTM) is an intrinsically safe, powerful monitor that supports a wide variety of applications, anywhere. With easy installation, clip-in cables, and the ability to monitor more than one tank or input, the affordable Anova UTM helps drive better customer service and distribution profitability. With unprecedented reliability and flexibility in the field, a broad array of metrics, configurable reporting and alarms, Anova UTM also works seamlessly with the Anova remote asset management platform and your supply-chain systems.



FEATURES & BENEFITS



UNIVERSAL

- Universal SIM supports multiple cellular networks (LTE CAT-M1)
- Two inputs supporting a range of sensors including tank level, pressure, meters, and others



DEPENDABILITY

- 15-year battery life
- 5-year warranty
- Rugged, sealed, with all-weather, robust construction
- Intrinsically safe and C1D1 compliant



EASY INSTALLATION

- Magnetic mount or 3M™ Dual Lock™ Velcro
- Clip-in Rochester remote-ready cable
- On-site verification with mobile app



INTEGRATION

- Seamless integration with supply-chain ERP software



REPORTING

- Half-hourly data sampling and configurable alarms, with daily reporting



INDUSTRY EXPERTISE

- Dedicated technical support and training staff

HOW IT WORKS



High-reliability sensors regularly check asset conditions



Measurements and alerts are communicated to secure cloud platform



View readings, build forecasts, and create reports

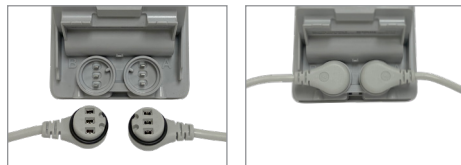
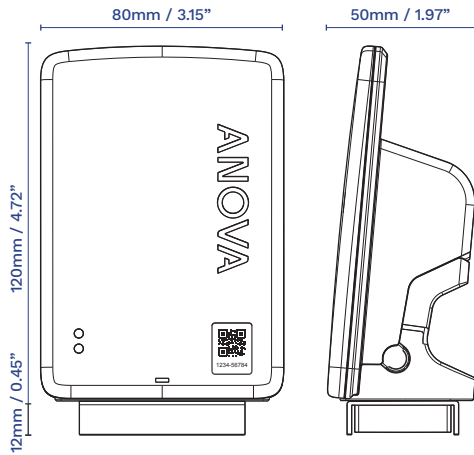


Schedule efficient deliveries and respond quickly to customer needs



OH 800-537-7518 | KY 800-448-9504 | IN 800-662-3252 | MO 800-821-3878 | MN 800-328-6291 | bergquistinc.com
Your questions answered by the people who know propane equipment.

ANOVA UTM™



INSIDE: Two universal inputs enable simultaneous monitoring of two assets, such as two tanks, or tank and pressure.

APPLICATIONS

- Level
- Pressure
- Large dial
- Refined fuel (pressure sensor)
- Cage monitoring
- Large bulk dial applications

Monitor and Forecast with ACTIONABLE SOFTWARE AND MOBILE APPS

Leverage the industry's leading software solutions to ensure your monitoring data is accurate and up-to-date.

- Customizable reports and notifications to alert you of critical tank levels or rapid depletion of product
- Highly-scalable asset management tools supporting up to thousands of assets per customer
- Comprehensive data integration and exchange with dozens of ERP systems and other IT platforms
- Integrated mapping across multiple map applications
- Efficient delivery scheduling of drop-offs and pick-ups

DIMENSIONS:

- 4.72" x 3.15" x 1.97"
(120mm x 80mm x 50mm)

RADIO:

- Roaming SIM supports cellular LTE CAT-M1 (North America), LTE CAT-M1 w/ 2G fall back (International)
- NB-IoT optional

NETWORKS:

- North America: AT&T and AT&T Partner Networks, T-Mobile, Sprint, US Cellular, Bell, Rogers, Telus
- International: Many

SENSOR INPUTS:

- 2 universal pluggable inputs
- Level, pressure, meter, digital input

MATERIAL:

- Polycarbonate/Polyester

POWER INPUTS:

- Primary lithium battery

BATTERY LIFE:

- 15 years (target)

REPORTING SCHEDULE:

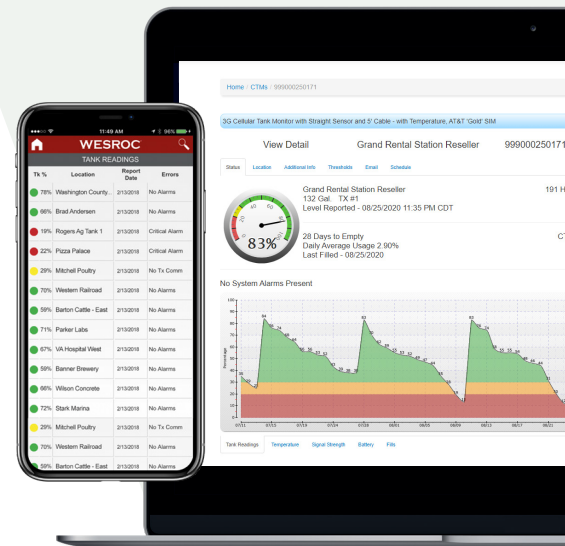
- Daily with ½ hourly alarms

TEMPERATURE RANGE:

- -30°C to +60°C (-22°F to +140°F)

COMPLIANCE:

- IP66
- FCC/IC/CE
- Certified Intrinsically safe C1/D1; Zone 0
- UL, ATEX, IECEx



OH 800-537-7518 | KY 800-448-9504 | IN 800-662-3252 | MO 800-821-3878 | MN 800-328-6291 | bergquistinc.com
Your questions answered by the people who know propane equipment.