



**PARTS LIST**

---

**TUBULAR GOODS FRAME**  
**(TME-HC)**

(9203)



**TAJIMA**



P-BF03-E

# Table of Contents

- TME-HC TUBULAR GOODS FRAME  
BASE SASH A ..... B F - 1 a
- TME-HC TUBULAR GOODS FRAME  
BASE SASH B  
(APPLICABLE TO TFA-30×30) ..... B F - 1 b
- TME-HC Y-AXIS FRAME SASH  
HOLDER & FRAME SASH RAIL ..... B F - 2
- TME-HC TUBULAR GOODS FRAME  
GAUGE ..... B F - 3

[Explanation of Marks # 's and \* 's at End of Part No.]

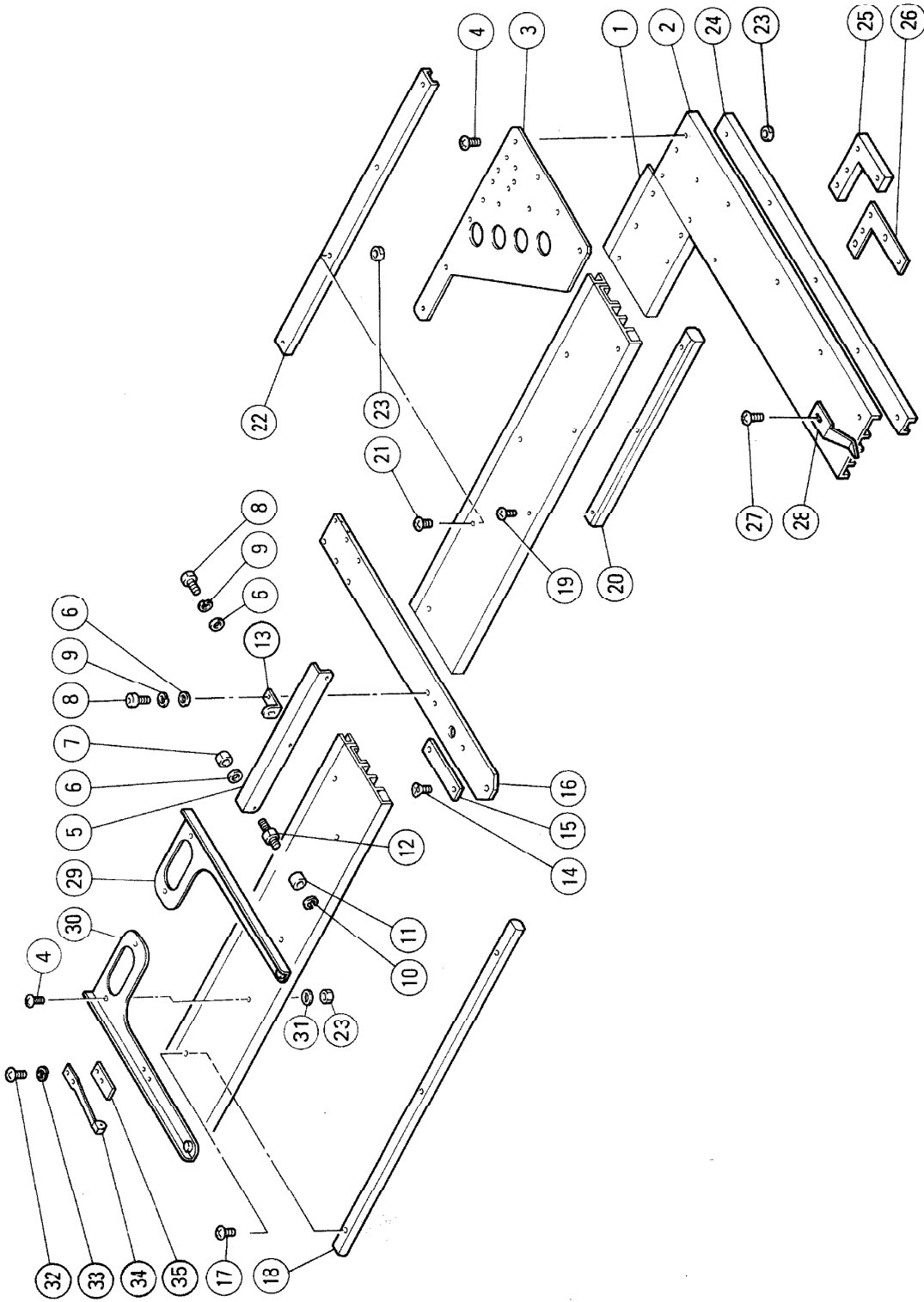
◇Please specify, in the following manner, your machine model, manufacturing number and embroidery space when you order us with the parts having \* \* \* \* \* at the end of the part No. :

Ex. : TME<sup>5</sup>-H612 (450 X 275)S, No. 01234  
       [Model] [Emb. Space] [Mfg. No.]

◇Please specify the number of needles on your machine's head in your parts order by changing the marks # # # # into one of the 4-digit numbers below :

Ex. : The part Number, EF012345 # # # #  
       4-digit Numbers     Machine Type  
       0300 ..... 3-needle machine  
       0400 ..... 4-needle machine  
       0600 ..... 6-needle machine  
       0900 ..... 9-needle machine

**Note :** Some Ref. Nos. are deleted when machines are upgraded, the discontinuation of the production of the parts, etc.



**TAJIMA**

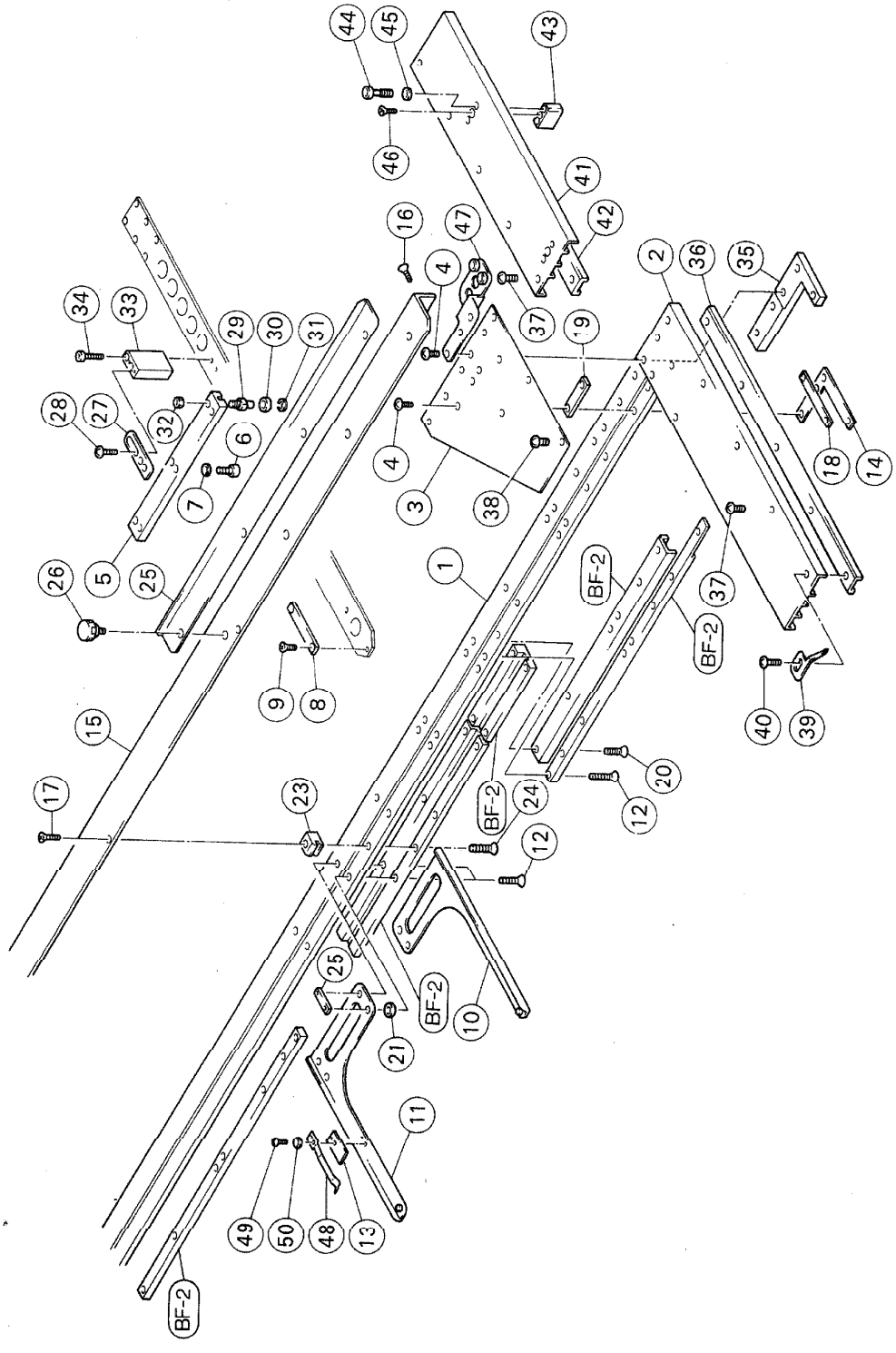
**TME - HC TUBULAR GOODS FRAME BASE SASH A**

**BF-1a**

Ref. No.	Description	Part No.	Ref. No.	Description	Part No.
1	Y-axis Base Sash	B F 0 1 0 1 0 0 * * * * *	30	Holder Base L	B F 0 1 0 8 L 0 0 0 0 0
2	X-axis Base Sash	B F 0 1 0 2 0 0 0 0 0 0 0	31	Plain Washer, M5	
3	Reinforcing Plate	B F 0 1 0 3 0 0 * * * * *	32	Pan Head Screw	S S 4 1 0 3 0 6 S D 0 0
4	Pan Head Screw	S S 4 1 0 5 1 0 S D 0 0	33	Spring Washer, M3	
5	Float--preventive Arm	B F 0 1 0 4 0 0 0 0 0 0 0	34	Frame Presser Spring Set	E G F 3 0 9 0 0 0 0 0 0 0
6	Plain Washer, M4		35	Patch Plate	B F 0 1 1 0 0 0 0 0 0 0 0
7	Hexagon Nut, M4				
8	Hexagon Socket Head Cap Screw	S S 6 2 0 4 1 0 C C 0 0			
9	Spring Washer, M4				
10	E-Ring	E 3 0 0 0 0 0 0 0 0 0 0 0			
11	Roller	H F 0 1 2 2 0 0 0 0 0 0 0			
12	Roller Pin	H F 0 1 2 3 0 0 0 0 0 0 0			
13	Roller Bracket	B F 0 1 1 1 0 0 0 0 0 0 0			
14	Countersunk Head Screw	S S 1 1 0 5 0 8 S D 0 0			
15	Spacer	B F 0 1 0 5 0 0 0 0 0 0 0			
16	Y-axis Frame Driver, Rear A (No SW Hole)	C M 0 7 0 6 A 0 0 0 0 0			
16	Y-axis Frame Driver, Rear B (W/SW Hole)	C M 0 7 0 6 B 0 0 0 0 0			
17	Pan Head Screw	S S 4 1 0 4 1 0 S D 0 0			
18	Y-axis Frame Sash Holder A	B F 0 1 0 6 0 0 * * * * *			
19	Countersunk Head Screw	S S 1 1 0 4 1 0 S D 0 0			
20	Y-axis Frame Sash Holder B	B F 0 1 0 7 0 0 * * * * *			
21	Pan Head Screw	S S 4 1 0 5 0 8 S D 0 0			
22	Frame Sash Rail	M E 0 3 0 7 0 0 * * * * *			
23	Hexagon Nut, M5				
24	Frame Sash Rail	M E 0 3 0 6 0 0 0 0 0 0 0			
25	Right Corner L	M E L 3 0 4 0 0 * * * * *			
26	Joint Plate	B F 0 1 1 2 0 0 0 0 0 0 0			
27	Truss Head Screw	S S C 1 0 5 1 0 S D 0 0			
28	Angle Pointer	M E 0 3 1 4 0 0 0 0 0 0 0			
29	Holder Base R	B F 0 1 0 8 R 0 0 0 0 0 0 0			

Notes: As for the parts with marks # or \*, please follow our instructions on Table of Contents, in your parts order.

TUBULAR GOODS FRAME BASE SASH B (APPLICABLE TO TFA-30x30) BF-1 b



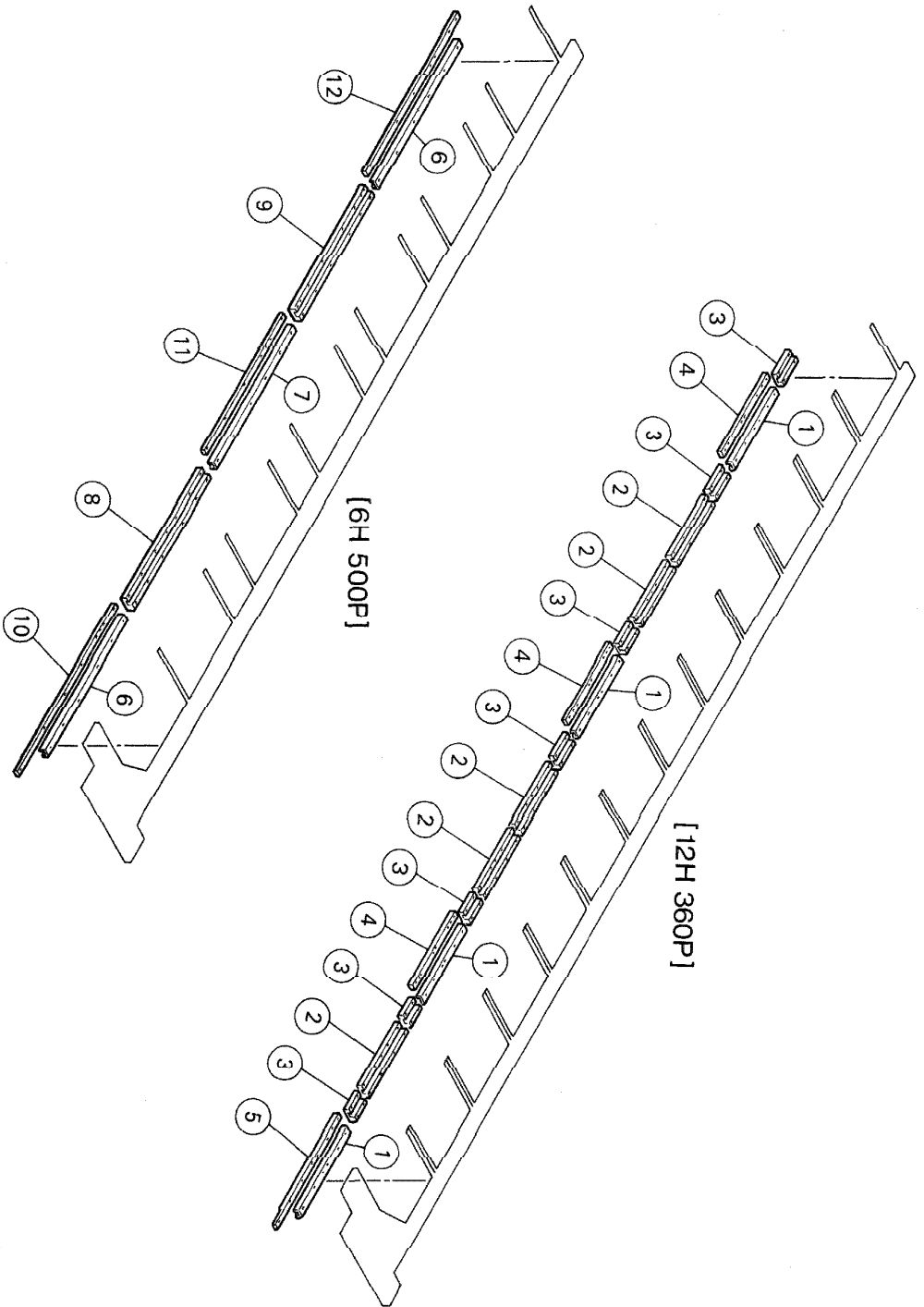
**TAJIMA**

(9202)

**TME-HC TUBULAR GOODS FRAME BASE SASH B (APPLICABLE TO TFA-30 X 30) BF - 1 b**

Ref.No.	Description	Part No.	Ref.No.	Description	Part No.
1	Y-axis Base Sash	BF010101****	31	E-ring	E40000000000
2	X-axis Base Sash	BF0102010000	32	Hexagon Nut, M4	
3	Reinforcing Plate	BF0103010000	33	Float - preventive Stud	BF0124000000
4	Pan Head Screw	SS410515SD00	34	Hexagon Socket Head Cap Screw	SS620430CC00
5	Float - preventive Arm	BF0104010000	35	Right Corner L	BF0125000000
6	Hexagon Socket Head Cap Screw	SS620406CC00	36	Frame Sash Rail	ME0306000000
7	Plain Washer, M4		37	Pan Head Screw	SS410508SD00
8	Spacer	BF0105000000	38	Pan Head Screw	SS410510SD00
9	Countersunk Head Screw	SS110508SD00	39	Embroidery Space Indicator	ME0314000000
10	Holder Base R	BF0108R10000	40	Truss Head Screw	SS010510SD00
11	Holder Base L	BF0108L10000	41	Z - spec. Frame Sash	BF0126000000
12	Countersunk Head Screw	SS110422SD00	42	Z - spec. Frame Sash Rail	BF0127000000
13	Patch Plate	BF0110000000	43	Z - spec. Frame Sash Stud	BF0128000000
14	Joint Plate	BF0112000000	44	Z - spec. Frame Sash Bolt	BF0129000000
15	Y-axis Angle	BF011500****	45	Plain Washer, M5	
16	Countersunk Head Screw	SS110308SD00	46	Countersunk Head Screw	SS010516SD00
17	Countersunk Head Screw	SS110410SD00	47	Z - spec. Roler Bracket	BF0130000000
18	Spacer No.1	BF0116000000	48	Frame Presser Spring	BF0131000000
19	Spacer No.2	BF0117000000	49	Pan Head Screw	SS410306SD00
20	Countersunk Head Screw	SS110412SD00	50	Plain Washer, M3	
21	Spacer Collar	BF0119000000			
22	Nut Plate	BF0120000000			
23	Stud Nut	BF0121000000			
24	Countersunk Head Screw	SS110420SD00			
25	Float - preventive Frame Sash	BF012202****			
26	Knurled Screw	EF0306000000			
27	Float - preventive Frame Bracket	BF0123000000			
28	Truss Head Screw	SS010416SD00			
29	Roller Pin	HF0123010000			
30	Bearing	L1044ZZ00000			

Note: As for the parts with marks # or \*, please follow our instructions on Table of Contents, in your parts order.



**TAJIMA**

(9107)

# TME - HC Y - AXIS FRAME SASH HOLDER & FRAME SASH RAIL

BF--2

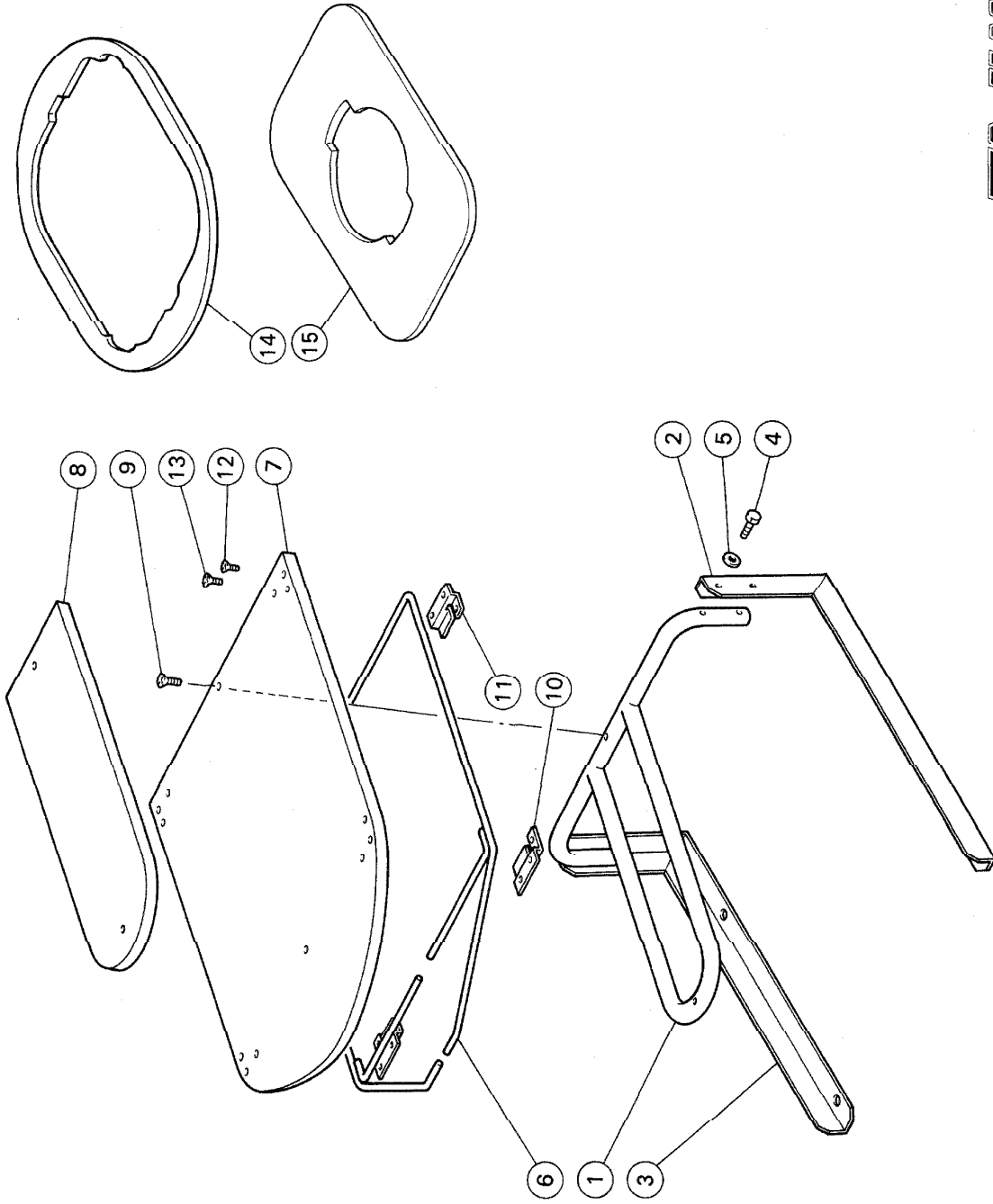
Ref No.	Description	Part No.	Ref No.	Description	Part No.
1	Y-axis Frame Sash Rail A0 (Length=449mm)	B F 0118000000			
2	Y-axis Frame Sash Holder A1 (Length=359mm)	B F 0106110000			
3	Y-axis Frame Sash Holder A2 (Length=134mm)	B F 0106210000			
4	Y-axis Frame Sash Holder B1 (Length=449mm)	B F 0107110000			
5	Y-axis Frame Sash Holder B2 (Length=555mm)	B F 0107210000			
6	Y-axis Frame Sash Rail A1 (Length=634mm)	B F 0118100000			
7	Y-axis Frame Sash Rail A2 (Length=634mm)	B F 0118200000			
8	Y-axis Frame Sash Holder A3 (Length=639mm)	B F 0106310000			
9	Y-axis Frame Sash Holder A4 (Length=589mm)	B F 0106410000			
10	Y-axis Frame Sash Holder B3 (Length=760mm)	B F 0107300000			
11	Y-axis Frame Sash Holder B4 (Length=634mm)	B F 0107400000			
12	Y-axis Frame Sash Holder B5 (Length=702mm)	B F 0107500000			

Note: As for the parts with marks # or \*, please follow our instructions on Table of Contents, in your parts order.



TUBULAR GOODS FRAME GAUGE

BF-3



**TAJIMA**

(8908)

# TME - HC TUBULAR GOODS FRAME GAUGE

BF-3

Ref. No.	Description	Part No.	Ref. No.	Description	Part No.
1	Frame Base	B F 0 3 0 1 0 0 0 0 0 0			
2	Base Stand R	B F 0 3 0 2 R C 0 0 0 0			
3	Base Stand L	B F 0 3 0 2 L C 0 0 0 0			
4	Hexagon Bolt	S S 9 3 0 6 3 0 S D 0 0			
5	Plain Washer, M6				
6	Fabric Stretching Arm	B F 0 3 0 3 0 0 0 0 0 0			
7	Front Body Part Ease	B F 0 3 0 4 0 0 0 0 0 0			
8	Sleeve Base	B F 0 3 0 5 0 0 0 0 0 0			
9	Countersunk Head Screw	S S 1 1 0 6 3 5 S D 0 0			
10	Arm Support A R	B F 0 3 0 6 R C 0 0 0 0			
11	Arm Support A L	B F 0 3 0 6 L C 0 0 0 0			
12	Countersunk Head Screw	S S 1 1 0 3 1 6 S D 0 0			
13	Countersunk Head Screw	S S 1 1 0 4 2 2 S D 0 0			
14	Front Body Part Frame Gauge, 30x24	B F 0 3 0 7 0 0 0 0 0 0			
14	Front Body Part Frame Gauge, 24x24	B F C 3 0 8 0 0 0 0 0 0			
14	Front Body Part Frame Gauge, 20x115	B F 0 3 0 9 0 0 0 0 0 0			
15	Sleeve Frame Gauge 120mm Dia.	B F C 3 1 0 0 0 0 0 0 0			
15	Sleeve Frame Gauge 50mm Dia.	B F C 3 1 1 0 0 0 0 0 0			
15	Sleeve Frame Gauge 70mm Dia.	B F 0 3 1 2 0 0 0 0 0 0			

Notes: As for the parts with marks # or \*, please follow our instructions on Table of Contents, in your parts order.