

Pool, Spa, and Hot Tub Bacteria Test

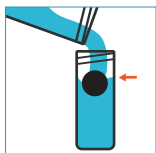
Self Testing Instructions

IMPORTANT!

Don't start until you're sure you can check your vial 8 days after starting this test.



1. Remove the inner vial and use the outer vial to collect a sample of the pool water you plan on testing.



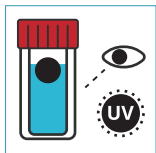
2. Pour some of this water carefully into the smaller vial, up to its fill line and let the ball rise up on its own.

Do not shake or swirl the tube!



3. Tightly screw the cap onto the inner vial and place it inside the larger vial. Screw the cap onto the larger vial.

Do not shake or swirl the tube!



4. Check your tube every day for 8 days, using your UV light (in the dark) and comparing what you see to the description on the reverse side of this card.

QUESTIONS?

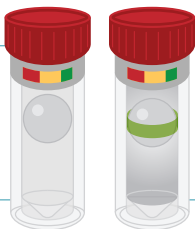
Visit help.mytapscore.com or email hello@simplewater.us

Interpreting Your Results

After following the instructions on the reverse side of this card, you can measure the severity of your pool-related bacteria by using the images and table below.

ABSENT

NO glow around the ball or cloudiness in the solution.



PRESENT

Glowing around ball under U.V and/or cloudy solution.

Bacterial Severity

Days until reaction	Colony Count (cfu/mL)	How bad is it?
1	2,000,000	Aggressive
2	425,000	
3	90,000	
4	19,000	
5	4,000	
6	800	
7	170	Moderate
8	35	
9	7	
10	<1	Non-Aggressive

Bacteria Type (Dominant)



If under UV light, your solution has NO glow around the ball and has NO cloudiness in the solution then there are no pool-related bacteria present.



GY

If under UV light, your solution is Glowing Greenish Yellow (**GY**) then *pseudomonas fluorescens* bacteria are present.



PB

If under UV light, your solution is Glowing Pale Blue (**PB**) then *pseudomonas aeruginosa* bacteria are present.



CL

If your solution exhibits Cloudiness (**CL**) then *non-fluorescing pseudomonas* bacteria are present.

Add these bacterial results to your Tap Score Report in the section marked: What to do next.

TAP SCORE