

LYNE



DONT LIKE READING?

WATCH THE VIDEO



WWW.LYNECOMPONENTS.COM/VIDEOS

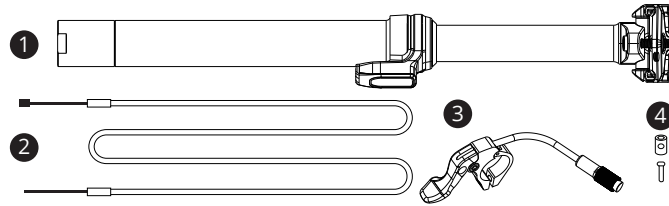
Contour V2.0

DROPPER POST SERIES- OWNERS MANUAL

INTRODUCTION

The Lyne Contour is an adjustable seatpost that allows riders to adjust their saddle height remotely. This is a high quality product that has undergone rigorous testing and complies with ISO and EN standards. The result is a robust design with very little head play.

PACKAGE CONTENTS



- 1 Dropper Seatpost
- 2 Cable- inner & housing (regular shifter housing and inner)
- 3 Remote Lever Assembly
- 4 Cable End Nut & Cable end cover

IMPORTANT NOTES

Ensure that you have chosen the correct seatpost diameter for your bicycle frame. Do not use a seatpost reducer shim with this seatpost, this will void your warranty and could cause damage to your dropper post and/or your frame.

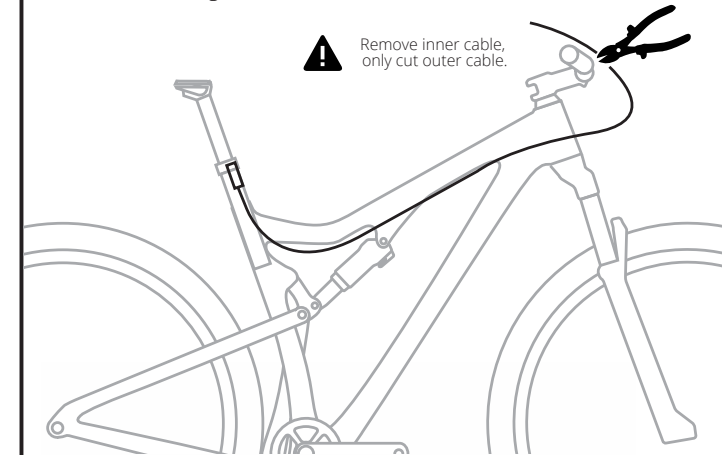
Please ensure you have the correct travel dropper post for your frame and seatpost extension combination, check lynecomponents.com for more info.

Ensure that the seatpost is inserted past the minimum insertion line. Recommended seatpost clamp torque is 4-6Nm. Over tightening will result in a malfunctioning dropper due to compressed internals.



INSTALLATION

Step 1. Insert the dropper seatpost in to the frame, position it close to its final riding position and tighten the seatpost clamp. Measure the length of the cable outer housing from the dropper post to the selected position of the remote lever. Use sharp side cutters to cut the cable outer to length, make sure to cut only the outer cable and not the inner at this point. Leave enough cable at the handlebars to allow for a full 180° of movement without restriction. Fasten the cable to the frame using cable ties.



Step 2. Push on the plastic cable ends on to the outer cable. The inner cable must be fed into the outer cable from the dropper post side leaving around 30mm of exposed cable before the cable end stopper.



Step 3. Remove the small plastic cap on the shaft of the dropper seatpost. Push the cable end stopper in to the recess in the internal mechanism. Note that there should be white grease in this area around the mechanism.

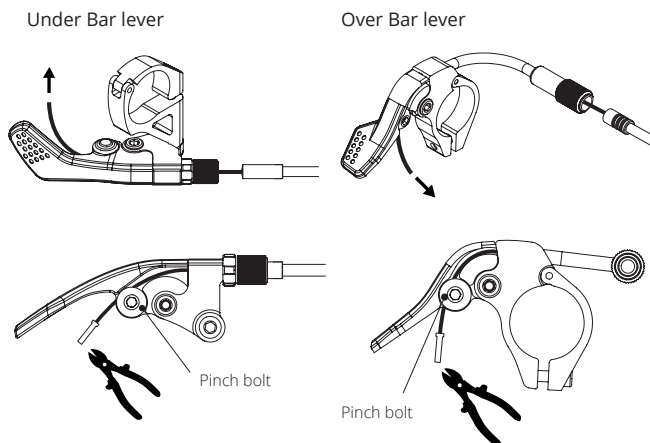


INSTALLATION (CONTINUED)

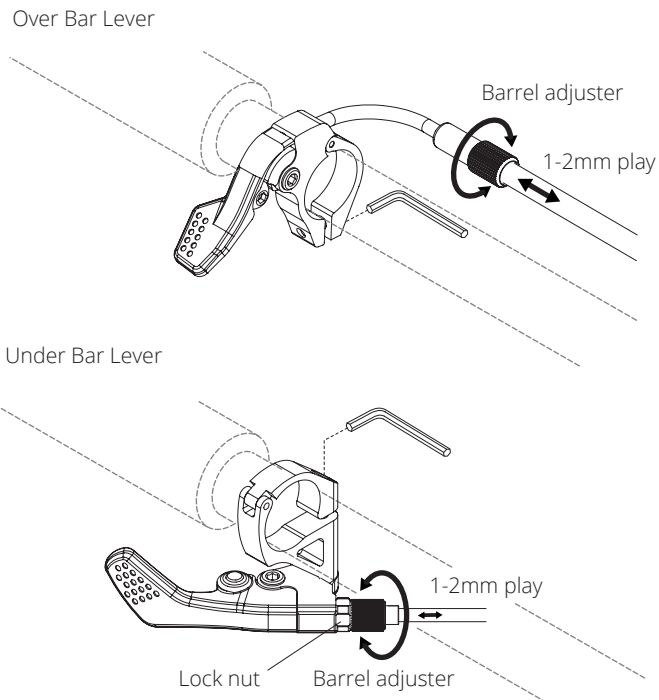
Step 4. Pull the outer cable out slightly and clip the plastic cover plate back in to place. You will see a small slot in the cover plate which must split around the inner cable. Now push the outer cable up in to the plastic cover plate to secure it.



Step 5. Loosen the pinch bolt on the lever. Insert the inner cable through the lever and push the outer cable end in to the tensioner. Tighten down the pinch bolt to clamp the cable. Cut the inner cable. Install and crimp the cable end ferule onto the end of the inner cable.

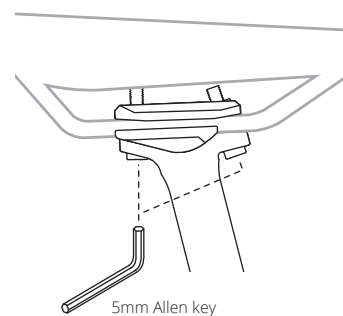


Step 6. Attach the remote lever to the handlebar, position this close enough to the handlebar grip that the riders thumb can press the lever. Once the lever is attached securely the cable tension must be adjusted. This can be done by using barrel adjuster. The cable should have 1-2mm of play and should not be under tension. If tension is too high the dropper post may actuate unintentionally.



Step 8. Install the saddle.

loosen both clamp bolts until the gap between the plates becomes big enough to insert the saddle rails. Position the saddle correctly in the clamp and tighten the bolt, adjust the bolts independently to level the saddle.



⚠ WARNING

Do not ride the bike aggressively until you are sure that the dropper post has been properly installed and all bolts are securely fastened on the saddle clamp and the seatpost clamp.

OPERATING THE DROPPER POST

The Contour post is designed to allow the rider to adjust the saddle height on the fly by simply pressing the remote lever.

To lower the seatpost- Sit on the saddle. Push and hold the remote lever in the down position. The saddle should now drop in to a lower position. Release the lever when the desired height is found. The saddle will now stay in this position

To raise the seatpost- Stand up on the pedals or dismount the bike. Push and hold the remote lever in the down position. The saddle should rise up and stop rising when in its highest position. Now release the lever.

MAINTENANCE

Routine maintenance of the seatpost will provide years of trouble-free performance. Before and after every ride the stanchion (shiny shaft) of the dropper post should be cleaned of any dirt and debris. Ensure that nothing gets in the way of the dropper post during operation, if the stanchion is scratched or damaged the dropper post function could be affected.

Servicing: We recommend servicing the post after 6 months of regular use or 1 year of mild use. If you see any signs of stanchion scratching or feel any rough movement then it may be time for a service. Please use the 6 months as a rough guide, if you ride in severe conditions or ride very regularly then servicing may need to be more frequent

Service kits are available on our website. Dropper servicing should only be undertaken by skilled mechanics.

⚠ WARNING

- If the frame seat tube diameter and dropper post diameter are mismatched it could lead to post slippage or failure which could cause personal injury or death.
- The Saddle rises swiftly when the lever is pushed. Always ensure nothing is in the way of the saddle during the operation of the post as this could cause injury.
- Keep away from mud and water, when storing for long period ensure the dropper post is kept upright.
- Do not exceed torque recommendations on any bolts, this could damage your seatpost.
- If you are not an experienced bike mechanic then please take your seatpost to your local bike store for installation.

WARRANTY

This seatpost is warranted for a period of 2 years from the date of purchase against any physical failure or breakage from fatigue or poor workmanship.

Moving parts of the seatpost including the cartridge, seals, brass keys and bushings are warranted against defective workmanship for a period of 1 year. Wear and tear on such items is not warranted; these items should be replaced during servicing.

The warranty is expressly limited to the repair or replacement of the defective part at Lyne Components option and is the sole remedy of the warranty. The warranty applies only to the original owner and is not transferable. Proof of purchase is required to validate warranty eligibility. The warranty does not cover normal wear and tear, routine maintenance, improper installation or improper use of the seat post. Modification of the post in any manner will void the warranty. Lyne components will not be responsible for incidental or individual costs incurred that are not covered by this warranty. The user assumes the risk of any personal injury or property damage, including damage to the seatpost and any other losses.