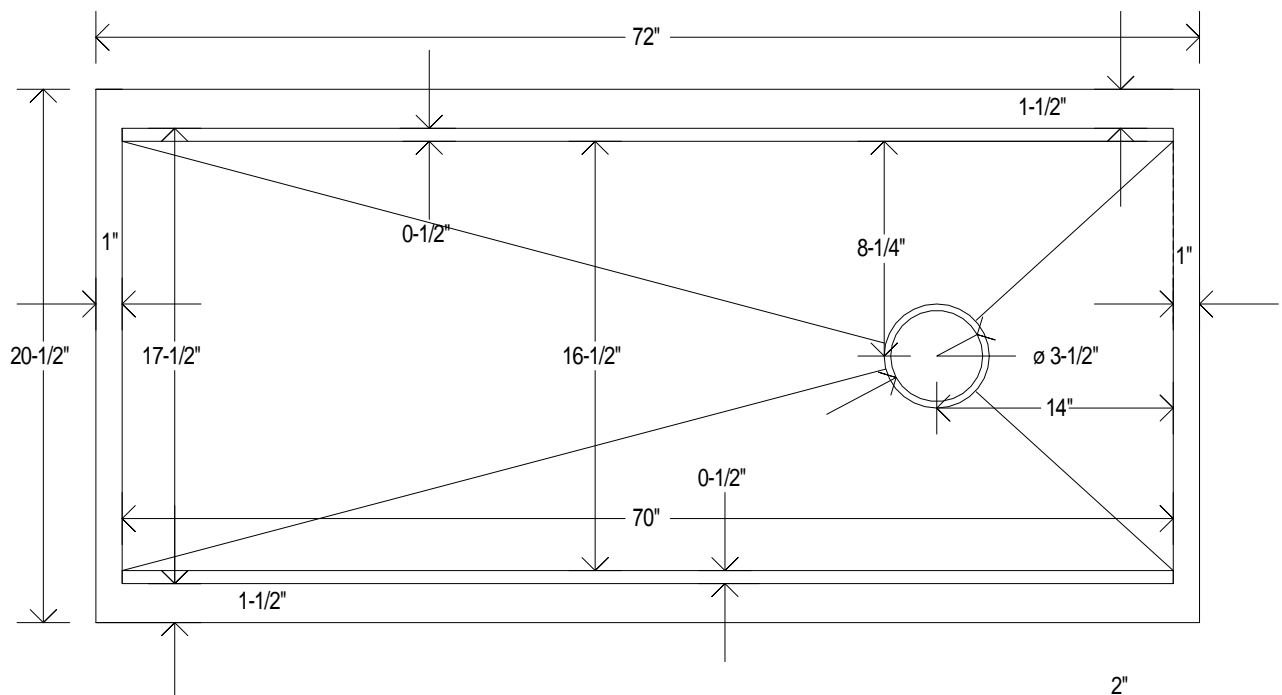


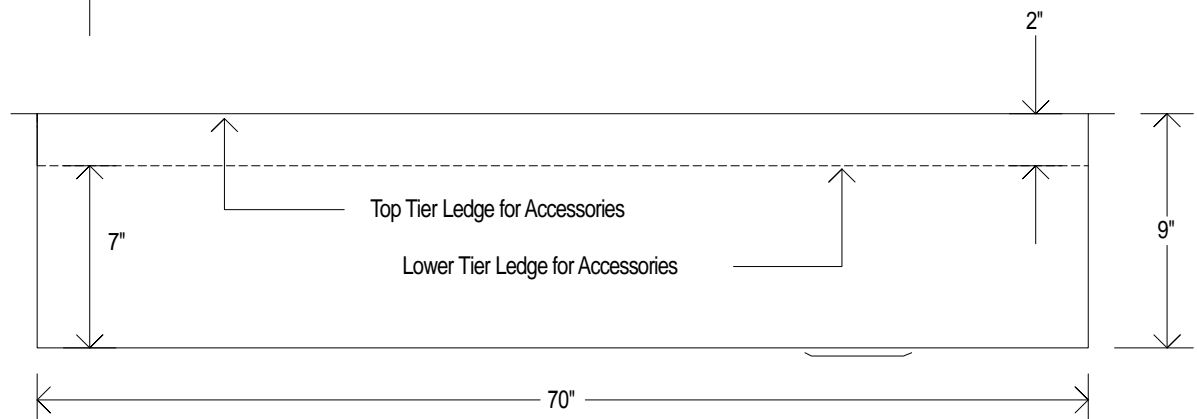
- **Sink Model:** 72" Eclipse Copper Undermount
- **Metal:** 14-Gauge 48oz Copper
- Non-recycled American 99.9% Pure Copper
- **Overall dimensions:** 72" x 20.5" x 9"
- **Inside dimensions:** 70" x 17.5" x 9"
- **Drain Placement:** Right Center - 3.5" Standard
- **Installation:** Undermount - 1" Perimeter Flange
- 1/2" Flange Reveal for Top Ledge

72
INCH

TOP
VIEW



FRONT
VIEW



*Drawing is to scale

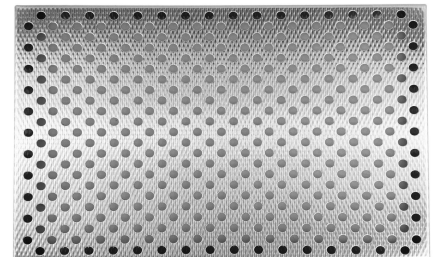
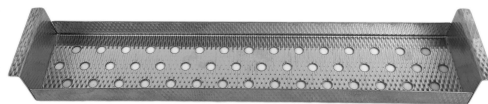
HAVENS



LIFETIME WARRANTY | EASY CARE | ERGONOMIC DESIGN | AMERICAN HANDCRAFTED

HANDCRAFTED IN THE USA BY HAVENS

BUILT-IN CULINARY WORKSTATION LEDGE FOR ACCESSORIES



AVAILABLE CULINARY ACCESSORIES FOR THE ECLIPSE SINK:

12"/15" COPPER DRYING RACK | SPONGE & SOAP CADDY
PROFESSIONAL CUTTING BOARD | MIXING BOWL CUTTING BOARD 5
QT. PASTA STRAINER BOARD | 5 QT. MIXING BOWL BOARD TRIPLE
CONTAINER SERVE BOARD | SIX CONTAINER SERVE BOARD
FILLABLE COPPER DROP IN BOWL | COPPER DROP-IN STRAINER
2 CONTAINER & BOWL BOARD | OVEN PAN | FULL SINK COVER