

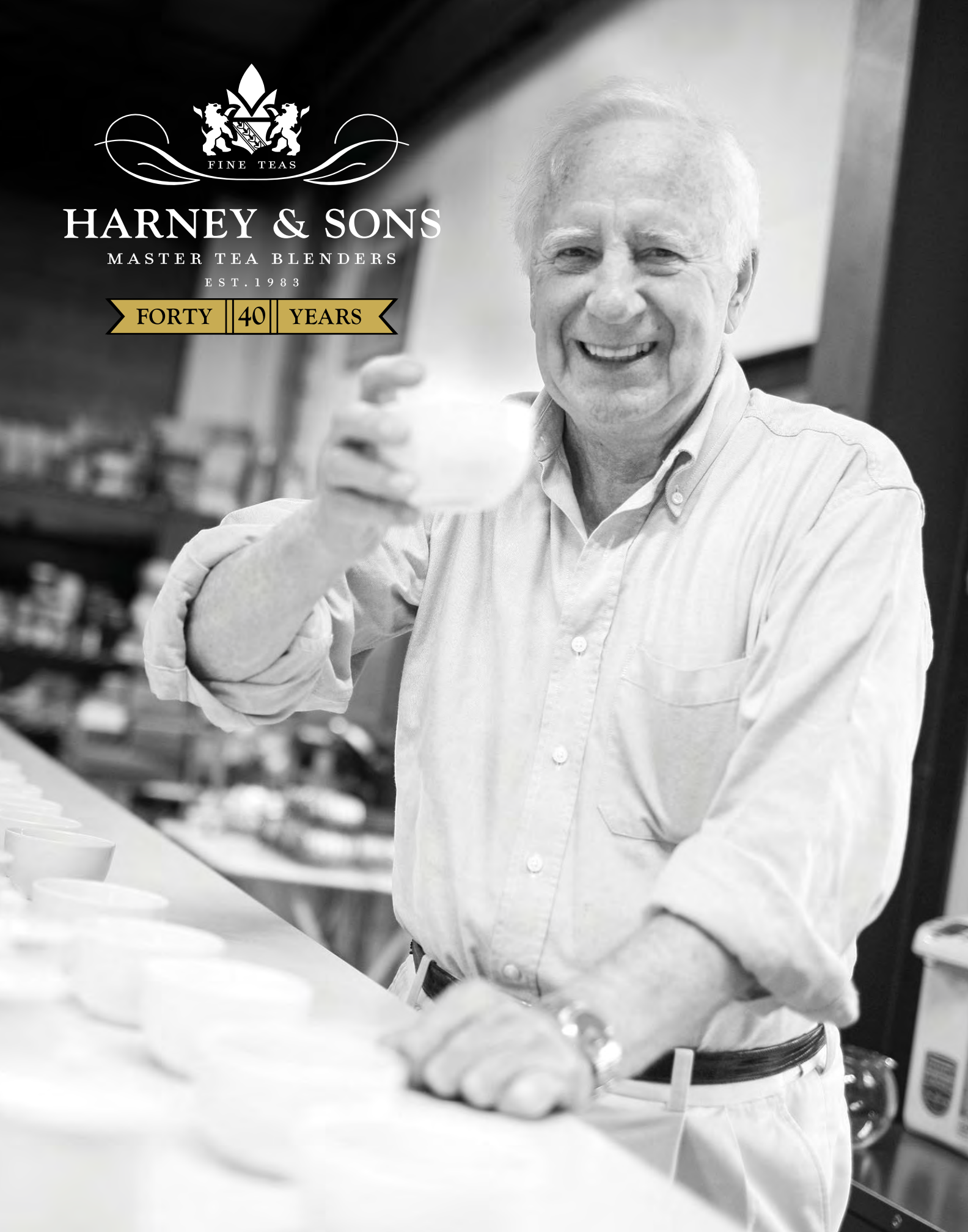


HARNEY & SONS

MASTER TEA BLENDERS

EST. 1983

FORTY | 40 | YEARS



Mike Harney's Tea Ratings

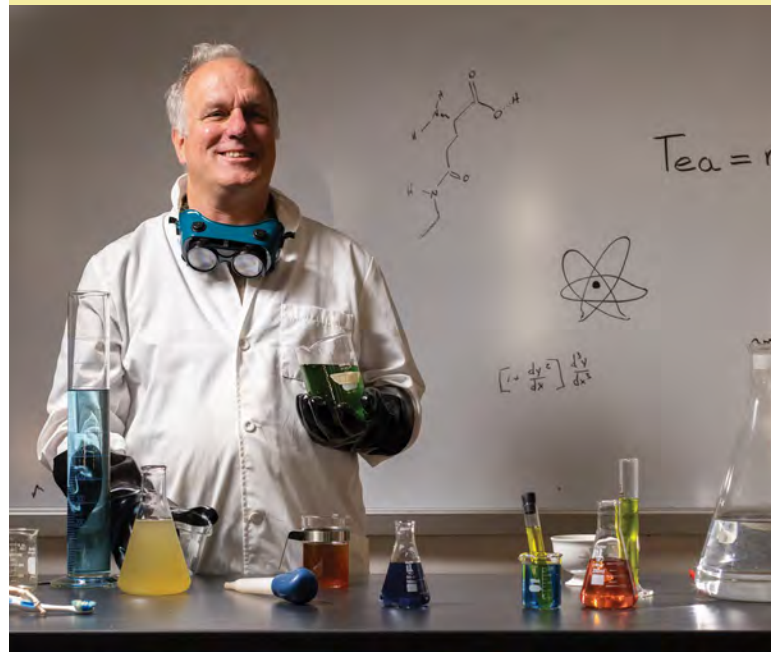
Mike Harney rates the majority of our teas according to three attributes. A rating of 0 means that the tea has none of that characteristic and a rating of 5 indicates that it is a primary characteristic.

Briskness refers to the tea's ability to make your mouth pucker, also known as astringency.

Body refers to whether or not a tea feels thick in the mouth, such as Assam, or light such as a white tea.

Aroma refers to whether or not the tea has a pleasant smell, often the most prized attribute of a tea.

Visit [Harney.com](https://www.harney.com) for Mike's complete tasting notes and tips.



OUR EXPERTS ARE HERE TO HELP

CALL US, TOLL FREE IN THE U.S. AND CANADA

FROM THE U.S. **1-888-427-6398 (1-888-HARNEY-T)**

FROM CANADA **1-888-745-9354**

EMAIL **customerservice@harneyteas.com**

FAX: **1-518-789-2100**

ONLINE **Harney.com Order direct, 24/7**

Do you have questions? Need a little help selecting?

Our tea consultants are available Monday through Friday from 9:00am to 5:00pm EST. They are happy to assist you with placing your order, a prior purchase, or to help you make a decision about teas, teaware or gifts.

TABLE OF CONTENTS

A Legacy of Smiles	3
40 Years of Tea	4-5
Tea of the Year: Berry Cobbler	6-7
Connections Through Tea	8-9
Brewing Tea to Perfection	10-11
Celebrating the Otsuka Family	12
Matcha Teas	13
Japanese Teas	14-15
Wellness Teas	16-17
The Hemp Division:	
Teas & CBD Blends	18-19
Historic Royal Palaces Collection	20-21
Jasmine & Fruit Teas	22-23
The Disney Collection	24-25
The Metropolitan Museum of Art Collection	26
A Passage From India	27
Ceylon Teas	28-29
Assam and Darjeeling Teas	30-31
Chinese Black and Green Teas	32
Colonial Williamsburg Teas	34
Queen of Mystery Teas	35
Ready to Drink	36-37
Flavored Green Teas	38-39
White Teas	40-41
Oolong Teas	42-43
Black Tea Blends	44-45
Best Sellers	46-47
Flavored Black Teas	48-49
Drink to Good Health	50-51
Earl Grey Teas	52-53
Iced Teas	54-55
Herbal Tisanes	56-57
British Teas	58
Charity Teas	59
Rooibos Teas	60
American Teas	61
Signature Teas	62-63
Decaffeinated Teas	64-65
Specialty Blends, Classics, HT Blends and Tagalongs	66-67
Harney Retail	68-69
Philanthropy	70
Elyse Harney Real Estate	71



1980 - John Harney with Stanley Mason



Mallory Harney (John's granddaughter) marries Jake Corbitt, Spring 2023



John Harney 2011

A LEGACY OF SMILES

The Harney family is proud to celebrate our 40th year as keen servants of tea, with a history as rich as our tea collection. Without Papa John, who started it all—and our loyal customers—we wouldn't be where we are today.

It all started back in 1983. John and Elyse Harney had been managing a country inn: The White Hart Inn in Salisbury, CT. With a change in ownership, they had to rethink their lives. At age 53, John decided to start Harney & Sons Fine Teas with only family ownership. John would be surprised to see where the company is today, but we think he'd still say, "I knew it!" He was always making sure he was right, even if he was not correct.

John would say, "Anyone can buy good tea; they just don't." So we made sure that we were the exception, and people like you have appreciated that. The basics that Papa John set out, in the beginning, are our guardrails. We've stayed true to his vision over the years, with the same logo and the same general customers he developed—food service, retail, and of course, You! Somebody has to drink all that tea! In case you weren't aware, our teas are consumed on all 7 continents, even at the NASA station in Antarctica.

We owe a lot to John. Great-tasting tea and hospitable service to our customers define us. As he taught us, we are still learning and innovating. What started with six teas has grown to more than 300 over the course of four decades. The six teas—basic English teas—were the foundation upon which the Harney tea

empire was built. Then, following John's mission to make tea an everyday luxury, we added in what our German tea mentor, Bernd Wulf, taught us: only buy tea that makes customers smile.

Our journey includes many wonderful milestones, such as the first Tea Summit in 1993—it was fun to organize and allowed us to broaden our scope. One of our seminal accounts during that period was the Takashimaya Store in New York City. They asked us to source many very special teas. And that was when we broke out from offering just British teas. Moving into our current headquarters allowed us to become a tea business that blended tea rather than having to buy it elsewhere—and that allowed us to control the process and make sure you have the best-tasting teas.

Today, we have enduring relationships with several tea vendors, such as Marcus Wulf in Germany and Tsuyoshi Sugimoto in Japan. We have many employees that have worked for us for more years than they care to admit, including our tea taster Elvira Cardenas who works with Mike, buying teas that make you smile.

Our love for tea extends across our family, touching multiple generations, and we are ever so grateful for the legacy we are creating through tea. With 40 years behind us, Harney & Sons Fine Teas has so much to celebrate. We look forward to continuing John's legacy of bringing smiles to our customers each and every day for many more years.

Cheers to 40 Years

A LOOK BACK ON OUR TEA JOURNEY

A legacy of quality tea and memorable moments

From 6 teas to more than 300, Harney & Sons Fine Teas has grown over the years to span continents and reach the hearts of tea lovers everywhere. John Harney who we affectionately call "Papa John" founded our company in 1983. From the start, he treasured the opportunity to offer quality tea and a sense of luxury to the palates of those who tasted Harney teas. He knew his efforts would be successful not solely because of his focus on the ingredients but more importantly because of his love and appreciation for the people he would meet along the way. For us at Harney, 40 years is just the start and we're excited to take you on the journey!



Stanley Mason starts Sarum Teas in Salisbury, Connecticut

1960



John takes the big step and forms a new tea company under his own name

1983



The first full fledged Harney Tea factory is founded in Lakeville, CT

1993



Younger brother Paul joins his father and brother in the ranks

1997



Purchase of our Factory in Millerton, NY

2002



Harney SoHo NYC opens managed and maintained by Emeric Harney

2010



Celebrating 40 years of serving smiles

2023

1970

John Harney trains under Stanley Mason and is educated in the business down to the last detail



1988

Son Michael Harney & his wife Brigitte join the ranks helping to grow every aspect of the company



1995

Grand opening of the first tea store managed and maintained by Brigitte Harney



1999

Hangzhou National Tea Museum, China, honors Queen Catherine Blend



2004

The Harney store moves to new location in Millerton, NY



2018

The Hemp Division is Founded



TEA OF THE YEAR

BERRY COBBLER

BERRY COBBLER

The winner of our 2022 Happy Blendings contest! This blend starts with a mellow bodied herbal base, then layers in blueberry, raspberry, vanilla and cinnamon. All that's missing is the ice cream.

Briskness-2 Body-1 Aroma-3

Available in **Sachets**

Whether a gathering that commemorates something special—an anniversary, a birthday or just a wonderful day to be alive—celebrate it with Berry Cobbler, this year's winner of the 2022 Happy Blendings contest. Designed by our customer, Lisa, Berry Cobbler is expertly handcrafted with rooibos which gives a mellow bodied herbal base, then layers in blueberry, raspberry, vanilla and cinnamon. Reminiscent of its deep-dish fruit dessert namesake, it's an absolute treat for the palate with extraordinary aromas and flavors. All that's missing is a scoop of fresh vanilla bean ice cream.

AN ABSOLUTE HERBAL DELIGHT!

"I've enjoyed every sip. This is definitely in my top two herbal teas."

CHRIS M.

LIKE A CUP OF DESSERT!

"Absolutely delicious! The tin is so pretty and the tea tastes like I'm really drinking a berry cobbler. We love it!"

SHANNON W.

COZY TEA, PERFECT FOR THE EVENINGS

"This is a good evening tea for me for two reasons: it's herbal, so I can go to sleep on time and it's very flavorful so I can substitute this when I want dessert."

LEN H.

INCREDIBLE FLAVOR!

"I am a huge fan of berries and this tea did not disappoint! It is no wonder that it sold out quickly and I had to wait to order more! The flavor is incredible! It is now my go-to tea for starting AND ending my day!"

CATHY R.

Friends Across Continents

CELEBRATING OUR CONNECTIONS THROUGH TEA

For 40 years, we Harneys have developed many friends with whom we've shared a pot of tea. At the heart of these relationships was John Harney, whose love of hospitality was both infectious and endearing. Always a new friend to meet, always a story to be shared with a chuckle. And sometimes John would read your fortune from a tipped tea cup. We each carry on this tradition to this day.

James Norwood Pratt

Norwood became a fast friend of John in the 1970s when almost no one drank tea. Norwood had just written the first book about tea in almost 50 years, and he had heard about John's pioneering work in Salisbury. This friendship carried on 'til John went to the great afternoon tea in the sky, and Norwood might say it continues even now. Norwood remains the Bard of Tea.

Norwood has been a friend to all of us Harney's. To each of us, he shows a different side. For Elyse, the matriarch, they share a devotion to God and religion. To Mike, they swap great teas and tea stories. Paul calls him Master Pratt, and they discuss how best to get into trouble. Even the next generation has special bonds with him. Just this past June, Norwood was at Mallory's wedding, and she has limited contact with tea. We are not quite sure how he keeps it all straight in his head.

Patrick Choi

It was almost 10 years ago that we received a request to import our teas into Korea. At the time, we could not imagine our teas being consumed in Korea. It was even stranger that the request came from New Jersey. Patrick was transitioning out of the construction business and thought our teas made a lot of sense. Since then, Patrick has grown the business greatly in Seoul.

Just as COVID-19 was hitting Asia, Mike was able to visit seven of the cute tea shops that Patrick operates around the capital of South Korea. Over the years, Patrick has also built up the Chinese market for Harney & Sons. Mike has seen Patrick's impressive work with his local partner Lin Hai in Shanghai and other locations. Truth be told, Patrick and Lin Hai are some of our best import partners.



Marcus Wulf

It was a cold and snowy New England night back in 1992 when a young German pulled into the White Hart Inn (where John had learned about teas many years before). Marcus Wulf was here to sell us some different teas. He had recently joined his father at the HTH tea company, and he had to find some customers. Previously, we had been buying tea from a New York tea importer, and we thought it would be good to buy teas that other small American tea companies did not buy.

After purchasing a small amount of tea from Marcus, Marcus took Mike on a marathon sourcing trip across India, China and Taiwan. A few years after that, Marcus took Paul to Sri Lanka and Vietnam. We have both grown from these small beginnings. HTH has been our largest supplier of teas for many years, and it is because of our relationship with them that we have bought many very special teas. Over the past 30 years, we have become very close friends. We could not imagine being successful in the tea trade without Marcus.

Rhonda Stuart

For many years, Rhonda has imported our teas down under. It is no small feat to be selling American teas in Australia and New Zealand. There is much competition there. Mike went to see Rhonda in 2020, just as COVID-19 was closing in on us all. He got a tour of the various shops that carry our teas. Rhonda is an avid horsewoman, and she named her stables and rings after us: Harney Park. After Mike visited the stables, it was off to Auckland to check in with her staff over there.

Mike is a bit of a sailor, and the highlight in New Zealand was doing a sales call at the Royal New Zealand Yacht Squadron and seeing the actual Trophy of the America's Cup, known as the oldest international sporting trophy, dating back to 1851. Few things could be better, in Mike's mind, than talking about tea while watching the spectacle of this world-famous international sailing yacht competition.

Matcha Senjunomukashi (Thick Grade)

Matcha powdered green tea has been the pride of Uji for several centuries. The Senjunomukashi (Thick Grade) has been used traditionally in the Japanese tea ceremony.
Briskness-3 Body-3 Aroma-3
Available **Loose**

Amba Thieves Tea

Years ago at the Amba Tea Estate, all tea had to go to the owners. However, some ladies plucked the tea and then made a crude and strong black tea in their hut. They were "thieves." This tea willingly accepts milk and sugar. You'll find it lovely and lively.
Briskness-3 Body-3 Aroma-3
Available **Loose**

"BIG EASY" Tea for the Soul - First Flush

A ravishing new tea grown and made in Louisiana by Beverly-Claire Wainwright and Hans Marchese of the Fleur de Lis Tea Company. We have a very limited supply but we are honored to offer this delicious, hand-plucked, honey colored tea.
Briskness-1 Body-2 Aroma-2
Available **Loose**

Organic Assam

Our Organic Assam is a rich, full leaf, medium-bodied black tea. It has a slightly lighter liquor, with sweet honey flavor. Assam is located on both sides of the Brahmaputra River in India.
Briskness-3 Body-3 Aroma-1
Available **Loose** and in **Sachets**

BREWING TEA TO PERFECTION

Bring smiles to every celebration

Proper Steeping Temperatures and Time

White Teas	175° F	2–3 minutes
Green Teas	160°–175° F	1–3 minutes
Oolong Teas	180°–212° F	3–4 minutes
Darjeelings	175°–212° F	3–4 minutes
Black Teas	212° F	4–5 minutes
Herbals	212° F	5 minutes

Suggested brewing times apply for loose tea, sachets or tea bags.

Making beautiful tea

To make Harney & Sons' beautiful teas into a delectable treat, attention must be paid to every detail. Of course the tea matters most, which is why we select full leaf teas from the finest tea gardens and estates. We care about the quality of our tea and we know our customers do too. A good pot of tea cannot be made from inferior tea. You need great tea!

Fresh, pure water

If need be, water should be filtered. Hard water, sulphurous water or chlorinated water will affect the taste and color of your tea. The Chinese say that water is the mother of tea, so, like all mothers, treat her nicely.

Condition and freshness

Tea should be stored in sealed containers away from light in a cool place. Because tea picks up flavors and odors from foods around it, keep coffee and spices away from your tea. To ensure freshness, it's important to rotate teas on your shelf or in your drawer.

Brewing the perfect cup

Heat your pot by filling it with boiling water. Recycle the water. Use one tea-spoon, tea bag or tea sachet for each cup of tea desired. Follow the steeping instructions for each tea, as each has their own required time and temperature. Once the steeping time is reached, remove tea, tea bag or sachet to achieve the perfect strength. Enjoy.

White Tea

Minimally processed, white teas are among the world's rarest. Hand plucked, unopened buds brew up into a subtle blend of sweetness and vegetal flavors. The best white teas are from Fujian province in China, and Sri Lanka.

Brewing

Brew white teas for 3 minutes in 175°F water. To achieve the perfect strength, remove the tea, tea bag, or sachet once your timer is up. Some white teas to enjoy are Chinese Silver Needle, Ceylon Vintage Silver Tips and Winter White Earl Grey.



Green Tea

Green teas are the most ancient of teas. Produced both in China and Japan, production methods vary but the focus is always to fix the green color. We're happy to offer a stimulating selection of gorgeous green teas.

Brewing

Heat your water to 175° F and steep for 3 minutes. Using a timer ensures your tea is not too strong. Some Japanese green teas also taste delicious in cooler temperatures – 140°F or even cold brewed. Try our Japanese Sencha, Lung Ching, and Tropical Green teas.



Matcha Tea

Matcha is vital, powdered green tea leaves packed with antioxidants that is delicious and energizing. Our customers have come to love its vegetal taste, unique preparation style, and our flavorful fruit-infused Matchas.

Brewing

Matcha teas should be made in 160°F to 170°F water and whisked until frothy. Some of our favorite Matcha teas are Matcha Senjunomukashi, Very Berry Matcha, and White Peach Matcha. **Note:** our flavored matcha teas do not require whisking, just infusing as other tea.



Oolong Tea

Partially oxidized, Oolong teas are in between green and black. First appearing 300 years ago in China's coastal Fujian province. If you are new to Oolongs, we recommend our Ti Quan Yin, Fanciest Formosa Oolong, or Milky Oolong varieties.

Brewing

For lighter, greener oolongs, stay on the lower temperature side. For darker, blacker oolongs, you can bring the water temperature higher, up to the boiling point. Steep both types of Oolong teas for 3-4 minutes, then remove tea, tea bag or sachet.



Black Tea

Black teas range from mellow teas from China to full-bodied teas from Assam, India. Black teas are withered, rolled, fully oxidized, and oven-fired which creates many warm, toasty flavors. Enjoy with a splash of milk or your favorite treat!

Brewing

Black teas should be brewed in 212°F water for 5 minutes. Once the steeping time is reached, remove tea, tea bag or sachet. If desired, serve your black tea with milk and sugar. Our English Breakfast, Scottish Morn, and Irish Breakfast teas are Harney black tea classics.



Herbal Tea

Whether you call them infusions, tisanes or "teas," these exclusive brews and blends are made from roots, flowers, leaves and seeds. Herbals have a long tradition in many cultures, and ours are delectable and caffeine free.

Brewing

Herbal teas should be brewed in 212°F water for 5 minutes. Once the steeping time is reached, remove tea, tea bag or sachet to achieve the perfect strength. To try something new, sip on our Yellow & Blue Tea, or Organic Rooibos varieties.





CELEBRATING THE OTSUKA FAMILY

Our Japanese Tea Partner

Japanese teas Ichiban Sencha and Sencha Scent of Mountains are favorites among Harney & Sons customers. They come to us from the Otsuka Green Tea Company, founded by long-time partners, the Otsuka family.

Involved with tea for over 150 years, the Otsukas are just as passionate today about spreading Japanese tea culture as they were the first day they cultivated their land in 1872. They're all about making better tea now and in the future—preserving tradition while also innovating, constantly developing new processes and products.

Says Kohei Sugihara, International Sales Manager for Otsuka Green Tea, "The most important thing is to keep making delicious tea. By making genuine and high-quality tea, consumers will accept them, and we'll sustain the industry. On the other hand, it's also important to protect the tradition, while valuing the connection with producers and the region." We couldn't agree more, as tradition paired with innovation has proven to be a winning combination. Just ask Ichiban Sencha and Sencha Scent of Mountains tea lovers.

Asanoka Sencha

On our recent trip to visit the Otsuka's, they introduced us to this Asanoka Sencha. Kohei, our host, shared with us the current production of this lighter steamed Sencha, and immediately we were hooked. An early season Sencha coming from eastern Kyushu, the sweet tropical fruit aromas dance delicately above a mellow bodied cup. The brew is well balanced umami, with a faint trace of astringency to give it confidence.

Briskness-2 Body-1 Aroma-2
Available **Loose**

Ichiban Sencha

Ichiban Sencha is the first production from the all-important Kakegawa area within Shizuoka, Japan's most important tea growing prefecture.

Briskness-2 Body-3 Aroma-2
Available **Loose**

Sencha Scent of Mountains

This Japanese green tea is a hit! People love the delicious light vegetal taste and distinctive aromas of this unique tea, grown in the highest region of Shizuoka. You will too!

Briskness-3 Body-2 Aroma-4
Available **Loose**

EXPERIENCE MORE THAN JUST TEA

Green teas are the most ancient teas and Matcha, the pride of Uji, Japan, holds a unique place in the world of tea. During traditional Matcha ceremonies, attendees would wear kimonos and pay tribute to their hosts while sipping this powdered green tea. At the center of these ceremonies was a sense of homage to Matcha and Japanese tradition. We're happy to help share authentic Matcha with tea lovers across the world who are ready to relish its vegetal flavors and antioxidant properties.

Matcha Jobetsugi

Jobetsugi is a "thin matcha", so it is a bit lighter in body than our Senjunomukashi, but still it is strong and bracing. Made from raw Tencha tea that is air dried, then dried flakes are ground between two stones resulting in a fine powder that is almost neon green.

Briskness-3 Body-4 Aroma-2
Available **Loose**

Matcha Senjunomukashi

Senjunomukashi is a "thick matcha," so it is thick and bracing. This grade of matcha is traditionally used for the Japanese Tea Ceremony.

Briskness-3 Body-4 Aroma-2
Available **Loose**

Matcha Unjonotomo

Unjonotomo is an "extra thick" matcha using high quality, sweet leaves. It is a smooth and creamy matcha. Our supplier of Unjonotomo submitted it to the Global Tea Championship, and it won first place!

Briskness-3 Body-4 Aroma-2
Available **Loose**

Organic Everyday Matcha

Not every day is special, so we found this good organic matcha that works every day. A perfect choice for iced matcha, lattes and a potent addition to a daily smoothie.

Briskness-3 Body-4 Aroma-2
Available **Loose**

Roasted Buckwheat Matcha

A mellow alternative to our popular Matcha iri Genmaicha, this matcha is silky-smooth and features a hint of sweetness from the buckwheat. Full of earthy, warm flavors but light on the tongue, this matcha is easy to make and easier to enjoy.

Briskness-2 Body-2 Aroma-4
Available **Loose** and in **Sachets**

Tencha

Quite rare even in Japan, Tencha is the base tea for making powdered matcha. This brew is sweet and ethereal.

Briskness-2 Body-1 Aroma-2
Available **Loose**

White Peach Matcha

An exquisite, innovative twist on matcha that'll appease even the most traditional fans of the brew, this blend is full of bancha, juicy peach flavors, and dried peaches, creating a lighter, enjoyably refreshing matcha.

Briskness-2 Body-2 Aroma-4
Available **Loose** and in **Sachets**

Very Berry Matcha

Brighten your day with vibrant Very Berry Matcha. It's a gorgeous green with strawberry-raspberry flavor, plus dried goji berries.

Briskness-2 Body-3 Aroma-3
Available **Loose** and in **Sachets**



HARMONY, RESPECT AND PURITY IN EVERY SIP

Just as the Japanese tea ceremony is meant to bring inner peace to guests, so do Japanese teas as you sip, smile and celebrate them in your own private sanctum. Choose from a wide variety that is sure to delight your senses and inspire peace of mind.

Bancha

Bancha is summertime green tea from Japan, notable for its grassy flavor and no smokiness. A brew that is so light and enriching, Bancha is a great choice for a cup of traditional green tea.
Briskness-3 Body-2 Aroma-2
Available **Loose** and in **Sachets**

Duck Rice Genmaicha

This Genmaicha is a mixture of green tea and fat grains of brown rice. The ducks seem to love this rice and we think you will love the blend.
Briskness-1 Body-2 Aroma-3
Available **Loose**

Genmaicha

Genmaicha is a different kind of Japanese green tea that many people find intriguing. Brown rice kernels (*genmai*) are added while the green Bancha leaves (*cha*) are being dried, so the kernels get crispy and some burst open. Genmaicha has a unique appearance and a pleasant roasted flavor.
Briskness-1 Body-2 Aroma-5
Available **Loose**

Ground Hojicha

If you like Matcha, this might be an interesting alternative. You make it similarly - a scoop or two into a bowl and whisk it into a foam. Many people enjoy the roasted tea stem flavors.
Briskness-3 Body-3 Aroma-4
Available **Loose**

Heavenly Gyokuro

This Gyokuro is hand picked from just outside Uji. Our friend Tsuyoshi uses tea from mountains of Ujitawara and Kyotanbe. This area of central Japan is known to make the best shade-grown Gyokuro. Towards the end of the growing season, the plants are gradually covered. This stress makes the plant adjust by adding more green appearing chlorophyll. What makes this tea heavenly is the mixture of mouth filling umami and a very distinctive spinach like aroma.
Briskness-1 Body-3 Aroma-4
Available **Loose**

Hojicha

Hojicha, a Japanese specialty, contains roasted twigs from some of the best tea gardens in Uji. One of the joys of Japanese food stores is the smell of fresh roasted Hojicha. It is reminiscent of coffee but sweeter. Ours is made from stems and has reduced levels of caffeine in comparison to black tea.
Briskness-2 Body-2 Aroma-5
Available **Loose**

Japanese Sencha

We call this tea Japanese Sencha because not all Sencha on the market is from Japan. Our Sencha is a very fine one from the central Shizuoka province, and can be found in many homes in Tokyo. It is a pleasant and approachable green tea, a fine choice for everyday, in the way our founder, John Harney, always began his mornings with this cup.
Briskness-3 Body-3 Aroma-3
Available **Loose**, in **Tea Bags** and in **Sachets**

Japanese Whisky

Japanese Whisky has grown in popularity, so we were excited when this tea was offered to us. As whisky fans, we couldn't resist it! Japanese Whisky is a rare tea that comes to us from Shizuoka Prefecture in Japan. It's made using the same cultivar as most Senchas, Yabukita. During its extensive processing, it is finished with an 8 hour smoking over wood chips made from Japanese whisky barrels.
Briskness-2 Body-2 Aroma-4
Available **Loose** and in **Sachets**

Kagoshima

One of the best Senchas from the Kagoshima area in southern Japan, this brew is light in the cup with a good balance of sweet and bitter flavors.
Briskness-2 Body-2 Aroma-2
Available **Loose**

Kagoshima Yutaka Midori

We wanted to offer a different style of tea from Kagoshima and we have succeeded beyond our dreams. Kagoshima is on the southern tip of Japan's southern Kyushu Island. This is a lightly steamed tea made from Yutaka Midori cultivar. Yutaka Midori means intensely green and this tea delivers. The light steaming makes for a sweet tea.
Briskness-1 Body-2 Aroma-3
Available **Loose**

Kukicha

Kukicha is made from stalks of Japanese tea plants, a resourceful use of harvested materials that are often discarded in other regions. Kukicha is similar to Hojicha, yet not roasted, and yields a slightly vegetal brew with a light green color. This tea has gained an ardent following in Japan; they enjoy its mellow flavor and low levels of caffeine. It is also used in macrobiotic diets.
Briskness-2 Body-1 Aroma-1
Available **Loose**

Matcha iri Genmaicha

Matcha is a much beloved green tea in Japan, yet it can seem intense to the uninitiated westerner. As an alternative, we suggest Matcha iri Genmaicha, the best of both worlds. The Bancha ("cha") leaves and brown rice ("genmai") that comprise Genmaicha are coated with Matcha green tea powder, and the result is fantastic!
Briskness-2 Body-2 Aroma-3
Available **Loose** and in **Sachets**

Mist of Kawane

Kawane is on the way up to the Japanese Alps. This region is where one of our most popular Sencha comes from, Scent of Mountains. The elevation makes the difference. Mist is destined to be as popular.
Briskness-1 Body-2 Aroma-3
Available **Loose**

Organic Sencha

In the past, we have avoided "Organic Sencha." Our feeling was maybe it was organic, and maybe it was a Japanese Sencha, but the tea did not meet our taste expectations. However, Mike met our current supplier a few years ago and was quite impressed by this Sencha. This one is certified organic and it is certainly from Japan. Most importantly, it tastes like a good Sencha.
Briskness-3 Body-2 Aroma-2
Available **Loose**

Soba Roasted Buckwheat

Soba Roasted Buckwheat is a traditional Japanese specialty that is prepared as you would an herbal tisane. It is naturally caffeine-free, with a delightful toasty flavor and nutty undertones. It was always Brigitte Harney's favorite on our visits to the former Takashimaya on Fifth Avenue, NY where we supplied tea for their renowned tea room over many years.
Briskness-1 Body-1 Aroma-3
Available **Loose**

Yuzu Sencha

It seems like it is Yuzu's time to shine. People are really liking this citrus fruit from Japan. So when we saw a blend of nice Sencha and yuzu, we thought we should try it.
Briskness-1 Body-2 Aroma-3
Available **Loose**

Wazuka Guricha

This Wazuka Guricha comes from Wazuka Valley in Kyoto prefecture and is from Mr. Wataru. He is a promising farmer of a younger generation of farmers in Wazuka, opposite the ridge of Matsuda. This Guricha is made from the short-period shaded Saemidori cultivar, which has a strong umami. In order to preserve this feature, he's opted to omit the last step in traditional sencha making, rolling, which can increase the body of the tea but reduce its umami.
Briskness-1 Body-1 Aroma-2
Available **Loose**

Welcoming wellness sip by sip

FROM GOOD FRIENDS TO GOOD HEALTH AND A CUP OF TEA THAT WARMS THE SOUL



Tea can do your mind, body and soul a world of good. Studies have shown that a variety of teas may boost your immune system, fight off inflammation, and ward off cancer and heart disease. In fact, there's a great deal of evidence that regularly drinking tea can have a lasting impact on your wellness. Using wholesome and powerful herbs and adaptogens—a unique class of healing plants, including certain foods and herbs like turmeric—our Wellness Infusions can elevate your health and give you so much to smile about.

Chaga Chai

Nourish your soul with the powerful adaptogenic Canadian Chaga mushrooms with wakaya ginger, cinnamon, coconut pieces, nutmeg and cardamom - known to encourage a feeling of warmth that will leave you with a healthy glow. This creamy elixir is a perfect alternative to your morning cup of coffee and is caffeine-free.

Briskness-3 Body-3 Aroma-3

Available **Loose**

Chaga Wonder

For centuries Chaga mushrooms have been used in supplements to provide rich antioxidants and naturally boost immunity. We combined wild-grown, Canadian Chaga with other powerful adaptogens like Ashwagandha root and crafted a new herbal infusion. The result is an earthy, toasty blend that is perfect for a moment of self-care. It brews up into a dark earthy tasting cup.

Briskness-1 Body-2 Aroma-3

Available **Loose** and in **Sachets**

Gaba Oolong

Taiwan has been making GABA Oolongs for many years. The GABA refers to Gamma-Aminobutyric Acid. GABA is believed to calm the nervous system allowing for better sleep.

Briskness-1 Body-3 Aroma-2

Available **Loose**

Golden Milk-Glimmer Wellness Blend

Lie back and experience a chill like none other with our latest wellness botanical, Golden Milk. Made with a mixture of adaptogens and spices let this cup bring out your inner glimmer. Please note: This Golden Milk blend has a kick of spice.

Briskness-3 Body-2 Aroma-4

Available **Loose**

Hemp Moringa

Moringa oleifera is native to the Indian subcontinent and has been used for centuries for its high levels of nutrients, many of which help regulate sleep. We've blended Harney-grown hemp leaves and flowers with organic moringa leaves, turmeric, coconut pieces, holy basil, goji berries and nutmeg.

Briskness-2 Body-2 Aroma-5

Available **Loose**

Organic Green with Citrus & Ginkgo

Based on a hand-picked organic green tea from China, our refreshing Organic Green with Citrus & Ginkgo blend delivers the benefits associated with green tea and ginkgo. It features a dash of lemongrass and the bright taste of natural citrus.

Briskness-3 Body-2 Aroma-3

Available **Loose**, in **Tea Bags**, **Sachets** and in **Iced Tea Pouches**

Organic Hibiscus Ginger

A delicious tune-up infusion designed to support your body's defenses. This organic brew combines flavors of tropical hibiscus, rosehips, apple, and powerful echinacea for an energetic, antioxidant-filled base.

Briskness-3 Body-2 Aroma-3

Available **Loose** and in **Sachets**

Organic Ginger Turmeric

A potent blend of two powerhouse roots to which we've added apple, beetroot, and lemongrass for a sweet and ruby-colored brew. Warm and soothing hot, or crisp, and refreshing when served iced, you will find a sense of tranquility in every cup.

Briskness-3 Body-2 Aroma-2

Available **Loose**, in **Tea Bags**, **Sachets** and in **Iced Tea Pouches**

A LIVELY SELECTION OF TEA + CBD BLENDS THAT MAKE YOU GRIN, RELAX AND ENJOY

Live, love, laugh—life is too short to spend it on useless worries. Brew yourself a cup of delicious hemp tea masterfully blended with superherbs, organics and CBD, and enjoy quality time with family and friends—or perhaps alone on the porch under the sparkling stars. With over 10,000 plants and a wealth of knowledge about hemp and CBD under their collective belt, Mike and Paul Harney invite you to take the journey along with them, as they share the exciting uses for hemp teas—alleviating chronic pain, reducing anxiety, improving sleep, and supporting heart health. Hemp tea is naturally caffeine-free and full of cannabidiols without THC, so it isn't psychoactive. Feel free to sit back, relax and revel in all the joy that life brings! From hot and iced brews to sparkling beverages, enjoy every sip.

HOT TEAS

CBD teas are a wonderful way to help reduce stress and anxiety. We offer a variety of CBD teas made from our home-grown hemp plants, which create an all-natural product that delivers a calm, body-relaxing experience. Such flavors are:

BOOM

Black tea, raw cacao nibs and coconut pieces are masterfully blended with CBD-rich Hemp Extract, flowers and leaves to create a blend that's booming with flavor!

Available in **Sachets**

CALM

To make your night complete or master tasks at hand, let Calm be your drink of choice. Find your new oasis in this tantalizing combination of turmeric and ginger with CBD oil.

Available in **Sachets**

CENTER

Center is an intriguing mix of black tea with cinnamon spices and orange cloves, paired with CBD Hemp Extract. If other teas are tempting, say "namaste" with Center instead.

Available in **Sachets**

CHILL

Enjoy relaxation at its finest with our hemp-infused Chill tea. Each sip contains caffeine-free chamomile with a bright dash of peppermint.

Available in **Sachets**

FOCUS

Yerba Mate, Yaupon and Spearmint are masterfully blended with CBD hemp flowers and leaves, creating a blend that offers clarity and focus throughout your day.

Available in **Sachets**

SLEEP

A delightfully dreamy blend of holy basil, moringa, and coconut. Sleep features CBD-rich Hemp Extract, hemp flowers, leaves, goji berries, and a hint of spiced nutmeg.

Available in **Sachets**

SPARKLING ELIXIRS BURSTING WITH LIFE

A REFRESHINGLY DELICIOUS WAY TO CALM YOUR SOUL

TANGY LIME

Naturally tangy lime juice, triple filtered sparkling water and our homegrown CBD-rich Hemp Extract. Perks up your palate and your day!

YUZU WITH ROSEMARY

What exactly is yuzu? Think a combo of lemon/lime/grapefruit and definitely citrusy and tart in triple filtered sparkling water. Then we add a dash of rosemary and homegrown CBD-rich Hemp Extract. Zippy!

ORANGE MANGO

Triple filtered sparkling water enhanced with tropical orange and mango. Plus our own CBD-rich Hemp Extract. Cool and tropical!



Want to learn how you should use hemp and CBD? Visit: <https://thehempdivision.com/blogs/news/how-often-can-you-use-cbd>

HISTORIC ROYAL PALACES COLLECTION

A celebration of English tea blends, developed by special invitation

Historic Royal Palaces of England, an organization that loves and cares for six wonderful royal palaces, invited us to create a distinguished collection of English tea blends. Each unique blend pays homage to tea's imperial history and roots, and comes packaged in a brilliant jewel-toned tin containing 30 tea sachets. Enjoy every sip.

Blueberry Green

For Blueberry Green, we've artfully blended Chinese green tea with lemongrass, blueberry, and vanilla to create a brew that's sure to hit all the right notes. Delicious hot or iced.

Briskness-2 Body-2 Aroma-4

Available **Loose**, in **Sachets** and in **Iced Tea Pouches**

Decaf Hot Cinnamon Spice

We're happy to provide a decaffeinated rendition of our best-seller: Hot Cinnamon Spice. It features the same assertive flavors: three types of cinnamon, orange peel, and sweet cloves, with the decaf black tea base. Despite the allure, there is no sugar or added sweeteners. Enjoy it anytime!

Briskness-1 Body-1 Aroma-5

Available **Loose** and in **Sachets**

Earl Grey Imperial

This Earl Grey is part of our distinguished line of historical English blends which were created especially for the Historic Royal Palaces of England. A blend of fine black teas, rich in natural Bergamot.

Briskness-2 Body-2 Aroma-4

Available **Loose** and in **Sachets**

Green Tea with Coconut, Ginger and Vanilla

Our Green Tea with Coconut, Ginger and Vanilla is an exotic combination of green teas, coconut, ginger, vanilla and lemongrass, creating a deliciously distinctive tea blend that is smooth. Also known as Bangkok.

Briskness-2 Body-2 Aroma-4

Available **Loose**, in **Sachets** and in **Iced Tea Pouches**

Hot Cinnamon Spice

Our most popular flavored tea worldwide, Hot Cinnamon Spice is an assertive blend of black teas, three types of cinnamon, orange peel, and sweet cloves. No sugar added. This tea is also known as Hot Cinnamon Sunset.

Briskness-2 Body-2 Aroma-5

Available **Loose**, **Sachets** and in **Tea Bags**

Peppermint Herbal

Our marvelously brisk Peppermint comes from Washington State, and the leaves produce a wonderfully aromatic and crisp tasting tisane. We find a cup of Peppermint can also get a pesky stomach under control in no time.

Briskness-1 Body-1 Aroma-5

Available **Loose** and in **Sachets**

Pumpkin Spice

A delectable harvest-time brew, our Pumpkin Spice tea is the perfect way to relax at the end of the day. This herbal tea features a masterful autumnal blend of pumpkin flavors and spices that will warm you up, inside and out. A vibrant red in color, you'll find this brew sports a light body and wonderful flavors. Offered seasonally in limited quantities.

Briskness-2 Body-1 Aroma-3

Available **Loose** and in **Sachets**

Royal English Breakfast

A stout combination of Kenilworth Ceylon and Kenya Milima black teas makes a smooth, full-bodied brew. Royal English Breakfast is delicious when complemented with milk and sugar.

Briskness-3 Body-3 Aroma-2

Available **Loose** and in **Sachets**

Royal Palace Tea

Royal Palace tea is a lovely blend of black tea, with notes of lemon and grapefruit. Featured in our Historic Royal Palaces Collection in a traditional tin design.

Briskness-2 Body-2 Aroma-4

Available **Loose** and in **Sachets**

Tower of London Blend

Tower of London Blend is reminiscent of Elizabethan preserves, flavorful and tempting. We stir Chinese black teas with pieces of dried stone fruit, then finish the blend with oil of bergamot and honey flavor.

Briskness-2 Body-2 Aroma-4

Available **Loose** and in **Sachets**

Victorian London Fog

Victorian London Fog was the winning blend in our customer creation contest! Thousands of blends were submitted and we let you all choose between the top 5 flavors! The beverage called London Fog originated during the Victorian era. Traditionally, it is an Earl Grey served with steamed milk.

Briskness-2 Body-2 Aroma-4

Available **Loose** and in **Sachets**





Delicate yet refreshing

THE BEAUTY OF JASMINE TEAS

Black Jasmine

Black Jasmine is our black tea version of a favorite floral tea. Originally jasmine teas were from green or slightly oxidized (pouchong) leaves. However, we were able to source a limited amount made of this black tea version from Fujian Province in China. It is difficult to find more, so get it while you can!

Briskness-1 Body-2 Aroma-4
Available **Loose**

Dragon Pearl Jasmine

A masterpiece from Fuan, China, Dragon Pearl Jasmine is composed of little, hand-rolled 'pearls' gently infused with jasmine flowers. The blend of green and white tea and jasmine is pure joy, with the floral and sweet aromas of the light colored brew.

Briskness-1 Body-2 Aroma-5
Available **Loose** and in **Sachets**

Jasmine Fairy Maidens

This exquisite flowering tea comes with a hidden surprise. Add less than boiling water, however, and watch as the bloom unfurls into a blossom with a center of fragrant jasmine flowers and delicate silver-green leaves at the base. Enjoy the gentle flavors and sweet aromas on a special occasion, or as a treat after a long day.

Briskness-1 Body-1 Aroma-3
Available **Loose**

Jasmine Silver Needles

We have seen these needles often, and finally we decided that you should try them. It combines the best of northern Fujian Province. There are the large silver tea buds (they call them Needles) - the pride of Fuding, and those needles are scented like another famous tea: Jasmine. Lovely!

Briskness-1 Body-1 Aroma-4
Available **Loose**

Jasmine

Flavoring teas with Jasmine flowers is an ancient Chinese tradition. The base of our Jasmine is a Pouchong tea, which is slightly browner than green tea. We add fresh jasmine flowers to create a delicate and fragrant brew.

Briskness-2 Body-2 Aroma-4
Available **Loose**, in **Tea Bags** and in **Sachets**

Yin Hao Jasmine

Our exceptional scented Yin Hao Jasmine begins with a very flavorful Pouchong (an almost green tea) - Then, for seven nights fresh jasmine flowers are interspersed among the tea leaves. The dry leaves absorb the floral essence, preserving it for your brewing pleasure.

Briskness-1 Body-2 Aroma-4
Available **Loose**



A FULL SPECTRUM OF FRUIT TEAS

Blood Orange Fruit Tea

A brilliant blend of dried fruit with the lovely and distinctive twist found in blood oranges. Delicious hot or cold, it brews an aromatic and vivid shade of orange.

Briskness-3 Body-3 Aroma-4
Available **Loose** and in **Iced Tea Pouches**

Goji Berry Fruit Tea

Given the popularity of our fruit teas we felt compelled to experiment with some other flavors. Goji Berry's tart and sweet flavors play well with the hibiscus and rosehip base.

Briskness-3 Body-1 Aroma-4
Available **Loose**

Mango Fruit Tea

Our Mango Fruit Tea blends dried mangoes, hibiscus, rosehips and fruit pieces with lush natural flavors to produce a beautiful ruby red brew. It's loaded with mango flavor, no caffeine and is delicious hot or iced.

Briskness-3 Body-1 Aroma-4
Available **Loose**

Orange Passion Fruit Tea

We blend rosehips, hibiscus, dried oranges, and other fruit pieces with orange and tropical passion fruit flavors. This combination produces a brilliant ruby red brew loaded with great flavor, and no caffeine.

Briskness-1 Body-1 Aroma-3
Available **Loose**

Peach Fruit Tea

When you're craving the summertime breeze, try our Peach Fruit Tea. We blend fruit pieces with rosehips, hibiscus, and natural flavors to produce a beautiful, vibrant ruby red drink. The peach flavor is a pure delight for this caffeine-free brew, which is delicious served hot or iced.

Briskness-1 Body-1 Aroma-3
Available **Loose**

Strawberry Kiwi Fruit Tea

For beautiful Strawberry Kiwi Fruit Tea, we blend strawberries and dried fruit pieces with strawberry and kiwi flavors to create a vibrant ruby red drink. It looks festive brewed in a glass teapot, and tastes delicious hot or iced.

Briskness-2 Body-1 Aroma-4
Available **Loose** and in **Sachets**

THE DISNEY COLLECTION

The already magical world of Disney is now even more special, featuring teas inspired by some of Disney's most beloved characters! It's a wonderful world when Harney & Sons and Disney come together. Are those tea leaves or a hint of magic in your tea? Only if you truly believe!

ALICE BLEND

When you simply must have a cup of tea, make it Disney's Alice in Wonderland inspired blend. The wonderful flavors inspired by this timeless classic – including fig and strawberry – will leave you grinning from ear to ear.

Available in **Sachets**

JASMINE PRINCESS BLEND

When it came to creating a blend for Disney's Princess Jasmine, we knew it had to be our green tea scented with jasmine and sprinkled with delicate chamomile flowers. Reminiscent of adventure and excitement, this tea is like a magical ride and sure to dazzle you.

Available in **Sachets**

MAD HATTER BLEND

Make room at your next tea party for this crazy good Disney's Mad Hatter blend. A classic Earl Grey plus a Milky Oolong, it pairs nicely with a slice of bread and butter – but only the best butter, of course!

Available in **Sachets**

MICKEY MOUSE BLEND

Beloved around the world, Mickey Mouse inspired us to create a timeless and classic tea. This blend of black tea, rosehips, and vanilla is sure to make you think, "Oh, boy!"

Available in **Sachets**

MINNIE MOUSE BLEND

Minnie Mouse embodies femininity, fashion, and positivity. Our blend of black tea, roses, and caramel was inspired by this lovable Disney character to reflect her sweet nature and sense of fun.

Available in **Sachets**

MOANA PRINCESS BLEND

This princess is a natural-born navigator, and this blend is adventurous to match. With its island flavors, it embodies the bold spirit of Moana and will instantly transport you to places far across the ocean.

Available in **Sachets**

SNOW WHITE PRINCESS BLEND

Don't let the apple pieces scare you – our Snow White-inspired blend of mutan white tea with apple and flowers reminiscent of the woodlands is sure to brighten your day. Honestly, the flavor may outshine all others.

Available in **Sachets**



COLLECT OUR MET MUSEUM Collection

We're proud to collaborate with the Metropolitan Museum of Art in this distinctive collection of teas that celebrates the fine art of famed painters. Inside is equally exquisite with a promise of many joyful hours of luscious tea drinking.



Garden Therapy Herbal Tea

Garden Therapy Herbal consists of chamomile, peppermint, and verberna; a blend that would've been perfect for Monet as he created scenic landscapes of the late 1800s. Please enjoy this decorative, charming herbal tea, which was created in collaboration with The Metropolitan Museum of Art.
Briskness-1 Body-1 Aroma-2
Available in **Sachets**

Hot Apple Spice Black Tea

This bright, autumnal blend bursts with the sweetness of apples ripened in the orchard. Along with cinnamon, orange peel and ground cloves, this black tea results in a sweet, warming brew, with just the right amount of spice.
Briskness-2 Body-2 Aroma-5
Available in **Sachets**

The Met Gift

This unique gift set includes the art-inspired set of four tins, each filled with 20 sachets of a unique tea blend all packaged nicely in a co-branded black and gold gift box. The teas included are Garden Therapy Green Herbal Tea, Hot Apple Spice Black Tea, Taste of British History, and Royal Pomegranate which was specially created in honor of the reopening of The Met's renovated British Galleries in 2020.

Royal Pomegranate Green Tea

Royal Pomegranate offers a light and layered blend of detoxifying green tea and antioxidant-rich pomegranate. Sweet notes of pomegranate puncture a soothing green tea as in this aromatic elixir.
Briskness-1 Body-2 Aroma-3
Available in **Sachets**

Taste of British History Blend

To honor the re-opening of The British Art galleries at The Metropolitan Museum of Art, we created custom blends. This blend stands above the rest, as a mixture of black and green tea with bergamot oil. Each cup is a tribute to England's initial fascination with tea, which would be the start of flavors and renditions to come.
Briskness-3 Body-3 Aroma-2
Available in **Sachets**



A Passage From India

South India is the forgotten child of Indian tea. So, this year, we went to the mountains of the Nilgiris to catch up with tea friends and discover new teas to make you smile. Korakundah, one of the highest tea gardens in India, provides the large source of Fair Trade green teas that we use. Brigitte & Mike's granddaughter incorporates that name: Korabelle. It is a place that evokes memory and joy, with teas perfect for any occasion. We also visited the beautiful estate, Dunsandle, from which we discovered another lovely black tea we're sure you'll enjoy.



Havakai Frost

This tea comes from the mountain of Nilgiris in Southern India. Although this area is in the tropics, the mountain's elevation makes for cold nights. So, the tea plant grows very slowly and the flavor is concentrated. This tea is highly withered, lightly oxidized, and makes for a very bright, brisk cup.
Briskness-3 Body-2 Aroma-3
Available **Loose**

Chamraj Nilgiri FOP

Chamraj Nilgiri FOP is an enjoyably mellow black tea with light citrus notes. It grows in the hills of southern India, on a sister estate to Korakundah.
Briskness-2 Body-2 Aroma-2
Available **Loose**

Organic Korakundah FOP

Korakundah has been seeing a lot of us Harneys. Alex has been there four times and Mike twice. This Organic Korakundah FOP is nice and mellow, a good everyday tea. Sourced from the highest tea region in the Nilgiri region of Southern India.
Briskness-2 Body-2 Aroma-1
Available **Loose**

Black Dunsandle

On our recent trip to India, we stayed at the Dunsandle estate and came to enjoy this tea.
Briskness-2 Body-3 Aroma-2
Available in **Loose**

CELEBRATE THE UNEXPECTED WITH CEYLON TEAS

Ceylon teas remind us to celebrate the unexpected. These black teas represent the pride of Sri Lanka, which until its independence from Britain in 1948 was known as Ceylon. The small pear-shaped island produces a massive quantity of tea, sometimes rivaling China.

This Spring, a group of us visited this island. After a long car ride, we arrived in the cool mountains, near Bandarawela. We toured some large tea estates that have been making tea since the time of Sir Thomas Lipton and then we went to the micro-estate of Amba, which is a paradise on Earth. We cannot wait to go back there. On the way back to the capital, we stopped by an old favorite, New Vithanakande, and also saw another tiny artisanal estate, Forest Hill.

Amba Ceylon

We came across this little gem while traveling. Created by a group of Sri Lankan women who make tea by hand, this one contains camellia flowers. You'll enjoy its citrus flavor and subtle floral notes.
Briskness-2 Body-2 Aroma-2
Available **Loose**

Amba Thieves Tea

A brisk handmade tea from the ladies of Amba, with bright notes of roasted citrus fruit and hints of dark honey.
Briskness-3 Body-3 Aroma-2
Available **Loose**

Black Amba Gems

From the mountains of Sri Lanka, these pearls of black tea offer a bold flavor you are sure to enjoy! We recommend 1-2 pearls per 8 ounces of water.
Briskness-3 Body-3 Aroma-3
Available **Loose**

Ceylon Vanilla Rods

We found this tea on our recent trip to Sri Lanka. Buddika made this tea in his small, really small, factory. Big Ceylon leaves are tied around a vanilla bean creating a delicious brew.
Briskness-2 Body-2 Aroma-4
Available **Loose**

Kenilworth Ceylon

From the famous Kenilworth Garden in the Dimbula region, the large leaves and full oxidation yield a great tea. It has an especially smooth liquor.
Briskness-1 Body-2 Aroma-3
Available **Loose**

New Vithanakande

One of our favorite teas. We love the look of the black leaf with a silver streak running through it. The taste is very "round" and satisfying. A great afternoon tea.
Briskness-2 Body-3 Aroma-2
Available **Loose**

Uva Highlands

This lovely high-grown Ceylon Pekoe from Uva has small leaves that produce an intense tea. It's bright and brisk with a hint of minty spice. Guaranteed to pick you up!
Briskness-4 Body-4 Aroma-4
Available **Loose**

Lover's Leap

Lover's Leap is made at one of the prettiest gardens in the world, in the old tea town of Nuwara Eliya. From high in Central Sri Lanka, the teas are light, with hints of lemon in the cup.
Briskness-2 Body-2 Aroma-2
Available **Loose**

See more Ceylon teas to make you smile:
harney.com/ceylon



GOLDEN, ELEGANT AND BOLD BLACK TEAS!

Honey and malty flavors, like the maltiness of a good beer—Assam black teas are among the briskest of black teas, derived from *Camellia sinensis* var. *assamica*, a large-leafed variety of tea discovered in 1830s in Assam, India. Assam tea brews up fast for a brisk—and delightful—body. Just add milk and sugar for even more smiles per sip.

Mokalbari Golden Tips

A rare treat from Assam, it is comprised of nearly 100% golden tips. The Jalan family are the producers of this Mokalbari East, and they made the best Assams in 2021. Briskness–2 Body–2 Aroma–2 Available **Loose**

CTC Assam

Tea as the Indians drink it: full bodied with deep hues of brown and rich flavor. CTC Assam is a key ingredient in several of our blends. An “espresso-style” tea! Briskness–3 Body–5 Aroma–3 Available **Loose**

Halmari Full Leaf

This was tough year in Assam - climate change made for too much rain. However Halmari was able to do a very nice tea again. It is smooth and elegant. Briskness–3 Body–2 Aroma–2 Available **Loose**

Organic Assam

This estate is located on the northern side of the Brahmaputra River in India. Organic gardens are rare in Assam. The teas generally do have the golden tips found on the best Assams. Without tips, the sweet honey flavors are missing. Briskness–3 Body–3 Aroma–1 Available **Loose** and in **Sachets**

Irish Breakfast

Our Irish Breakfast tea is 100% Assam, and like most traditional Irish blends, this is a great way to begin your morning. In contrast to other versions of Irish Breakfast tea, you could say ours is a little more sophisticated. It tastes great on its own or takes milk and sugar well. Briskness–2 Body–4 Aroma–3 Available **Loose**, in **Sachets** and **Tea Bags**

Khongea Broken

A bold, brisk Assam. Great for starting your mornings off right! This tea is produced by the Prakash family of DLX Ltd. who also own Glenburn Tea Estate. It is made on the south side of the Brahmaputra River in India. Briskness–4 Body–3 Aroma–2 Available **Loose**

The Queen of Teas

In the Himalayan foothills sits one of the highest-altitude, tea-growing regions in the world—Darjeeling. The lively fruit and floral aroma of its First Flush brings to mind musctafel grapes, while the later season teas evoke more subtle tropical fruit notes. In any season, gather your friends and loved ones to celebrate all that’s good over a cuppa of the “Queen of Teas.”

Organic Darjeeling

A single-estate Darjeeling that varies from year to year depending on which producer offers the highest quality tea. The aromas and flavors of bright red fruits and the sweetness of stone fruits reign supreme. Briskness–2 Body–2 Aroma–2 Available **Loose**

Darjeeling

Our Darjeeling tea is a blend of First Flush and Autumnal teas from the best gardens. A great value. Briskness–2 Body–2 Aroma–3 Available **Loose**, **Sachets** and **Tea Bags**

Selimbong 2nd Flush

What a great tea! This Second Flush Darjeeling tea is brimming with mellow dark fruit flavors. Just wonderful! Briskness–2 Body–3 Aroma–3 Available **Loose**

Singell 2nd Flush

We have often bought from this estate in the Mirik Valley. You can count on Binod Mohan of Tea Promoters and his staff to make great tea. Briskness–2 Body–2 Aroma–3 Available **Loose**

Puttabong 1st Flush Darjeeling

Our friends at Puttabong have done a great job with this tea. It is owned by Jayshree and is located north of Darjeeling town. This tea came towards the end of the first flush season in April. Brisk yet flavorful with a rounder flavor than Teesta Valley 1st Flush. Hats off! Briskness–3 Body–2 Aroma–3 Available **Loose**

Teesta Valley 1st Flush

We visited Teesta Valley on the eastern edge of the Darjeeling tea area years ago. However, the memories of the lovely estate are fresh. It was such a pleasure to wake before dawn and hike to the top of the estate to take pictures, and we enjoyed the descend down to drink copious amounts of tea made that day. Drinking this solid first flush brings back those fond memories. Briskness–4 Body–2 Aroma–3 Available **Loose**

For more Assam Teas visit:
harney.com/assam

For more Darjeeling Teas visit:
harney.com/darjeeling

A SMILE FOR EACH SIP

CHINESE BLACK TEAS

Ancient Yunnan

The Rao family makes this tea in the mountains of Yunnan from 400 year old trees, making for a complex and delightful brew.

Briskness-1 Body-1 Aroma-2
Available **Loose**

Black King

The name says it all. Years ago, we found this lovely black tea full of golden tips an hour outside of Changsha, in Hunan Province. It soon became one of our most popular finds. Given our weakness for great Chinese black teas, we could not resist its charms! We're happy to have it back.

Briskness-1 Body-1 Aroma-2
Available **Loose**

Golden Monkey

Golden Monkey plants have bigger buds which are prized for use in white tea. Grown in the northern part of the Fujian Province, Golden Monkey tea and tips oxidize slowly. A golden brew with honey and apricot flavors. We do offer a sampling selection: Flight of the Golden Monkeys.

Briskness-2 Body-3 Aroma-3
Available **Loose**

Hao Ya 'A'

This is the most intense Keemun, loaded with toasted cocoa flavors. Keemun teas are considered some of the best black teas in China.

Briskness-2 Body-4 Aroma-3
Available **Loose**

Hao Ya 'B'

Hao Ya 'B,' a Keemun black tea from China, is made in late spring and offers great taste and value. It is less intense than Hao Ya 'A'. It has warm toasty notes with hints of chocolate.

Briskness-3 Body-3 Aroma-4
Available **Loose**

Keemun Snail

For some of our longtime customers, you may remember Golden Snail, a tea that drove us crazy with its fantastic body and flavors. We are constantly searching for something that reminds us of that cup and this tea does a good job of doing just that! It has a smoother and darker cup than most of our other Keemuns. It does have that distinctive Keemun flavor.

Briskness-2 Body-3 Aroma-3
Available **Loose**

Lapsang Souchong

This ancient tea from China is loved for its distinctive smoky flavor. The large leaves dry slowly over pine fires with abundant aroma. This was Winston Churchill's favorite tea.

Briskness-1 Body-4 Aroma-5
Available **Loose** and in **Sachets**

Pu-Erh

An ancient tea from Yunnan, Pu-Erh's earthy pleasures have a passionate group of follow-erhs. This particular version is a dark, savory cooked Pu-Erh and makes for a striking brew. Brigitte Harney is especially a fan. This Pu-Erh is a Shou style. Shou Pu-Erh is differentiated from sheng Pu-Erh in that it is fermented before it is packaged, compressed or sold for consumption.

Briskness-2 Body-3 Aroma-4
Available **Loose**

Tong Lu Black

Mike Harney and Elvira Cardenas discovered a new tea garden in southern Zhejiang Province where veteran tea growers coaxed the famous Anji tea plants to bear fruit of unparalleled flavor in green and black teas, including this delicious Tong Lu Black. Light and malty with hints of cocoa, cinnamon, and natural sweetness.

Briskness-2 Body-3 Aroma-3
Available **Loose**

A sip of Chinese green or black tea can bring to memory China's rich tradition of having produced tea for at least five thousand years. Few countries boast such a rich history in tea cultivation or can offer such a delicate balance of extraordinary teas. We are happy to bring smiles to your faces as you sip some of China's finest teas. From the gentle, vegetal flavors of Chinese green teas such as Jin Shan to the fragrant, smoky notes of Chinese black teas such as Lapsang Souchong – Winston Churchill's favorite tea – we are sure to delight your palate.

CHINESE GREEN TEAS

Anji Baicha

Another fabulous tea from northern Zhe-jiang Province, loaded with asparagus and citrus flavors. "Baicha" refers to the special cultivar (tea plant) used to make this tea.

Briskness-1 Body-2 Aroma-2
Available **Loose**

Tong Lu Green

We came upon a new tea garden in southern Zhejiang Province where tea growers coaxed the Anji tea plants to bear fruit of unparalleled flavors. Today, those plants produce delicious green and black teas, including this Tong Lu Green. Lightly floral and boasting a hint of fruit in its rich aromas, our Tong Lu Green is a pleasure from first steep to last.

Briskness-2 Body-2 Aroma-2
Available **Loose**

Organic Chun Mee

This traditional green summer tea from China, with its lightly roasted vegetal taste, has been consistently popular with our customers for more than 30 years, when John Harney introduced it.

Briskness-3 Body-3 Aroma-3
Available **Loose**

Taiping Houkui

A hand rolled style of one of China's best green tea. It was great to see the ladies hand roll the large leaves and then flatten them in a press. Most Taiping Houkui is now made by machine, so it is nice to have this hand rolled traditional green tea. Please note that it is one ounce and we put it in a big bag to make sure you enjoy the large leaves.

Briskness-1 Body-2 Aroma-1
Available **Loose**

Organic Gunpowder

When John Harney started in the tea trade over 30 years ago, there were just two green tea offerings from China: Gunpowder and Chun Mee. Though our selection has expanded greatly since then, many people are very familiar with and enjoy Gunpowder's sharp, charred flavor.

Briskness-3 Body-3 Aroma-4
Available **Loose** and in **Sachets**

Hunan Mao Jian

Mild and a touch mysterious, this beautiful tea provides a moment of relaxation on a clear afternoon. Gentle grassy aromas with a note of smokiness complement a very light, delicate body that dances across the tongue with sweet hints of florals, vegetals, and just a touch of spiciness.

Briskness-1 Body-2 Aroma-1
Available **Loose**

Jin Shan

Jin Shan is a tiny village in Zhejiang Province in China. Here locals make a tea developed by monks over the centuries. Light yet flavorful, the tea is beautiful with its twists of green and white. Mike believes that this area was the source of the teas that were transplanted from China to Japan.

Briskness-1 Body-1 Aroma-2
Available **Loose**

Hunan Green Curl

We get this tea from western Hunan Province in China. It comes from a newish cultivar called "Golden". They say it is worth its weight in gold. We like the bright green color of the leaves and the brew (liquor) and its mouth filling body. It comes from all of the amino acids in this early season tea. So when you want to try a new green tea, this is the one!

Briskness-1 Body-2 Aroma-3
Available **Loose**

Lung Ching

Lung Chings are famous worldwide as some of the best Chinese green teas. This is an ancient tea that has come back to life. Our Lung Ching is made by a respected producer two hours beyond the traditional area. The small green leaves make for a brew that has a mild and sweet almost nut-like flavor.

Briskness-1 Body-2 Aroma-3
Available **Loose** and in **Sachets**

Meijiawu Lung Ching

Lung Ching is to Chinese green teas what French Champagne is to sparkling wines: the standard against which all others are measured. It has the Chinese green tea qualities of steamed bok choy and roasted nuts.

Briskness-1 Body-2 Aroma-3
Available **Loose**



TEAS STEEPED IN MYSTERY AND EXTRAORDINARY FLAVOR

Inspired by Agatha Christie

Three tantalizing teas celebrate the bestselling author of all time. Dame Agatha Christie wrote the book on murder mysteries, including classics *Murder on the Orient Express* and *Death on the Nile*. What better way to pay homage to the Grand Dame than to put the kettle on and sip enjoyable brews dedicated to these timeless tales.

A Salute to History DELECTABLE TEAS THAT HONOR YESTERYEAR

The former colonial capitol is alive and well in Colonial Williamsburg, complete with history sites, museums, staged performances and gardens. Williamsburg Summer Afternoon Tea and Williamsburg Holiday Heritage Tea tastefully honor a time long gone. Your purchase of these Williamsburg products supports the research, preservation, and educational programs of the non-profit Colonial Williamsburg Foundation.

Williamsburg Ginger Cake

A true Colonial Williamsburg tradition, the iconic ginger cakes baked at the Raleigh Tavern bakery have been a coveted favorite for generations of visitors. Let the festive aroma of Williamsburg Ginger Cake tea warm your home and spirit this holiday season. A rich black tea with cloves, cinnamon, and molasses to warm the season. Briskness-2 Body-3 Aroma-3 Available in **Sachets**

Williamsburg Holiday Heritage

Bring home a taste of Colonial Williamsburg's grand illumination! A classic holiday tea with hints of citrus, cinnamon and a dash of nostalgia, warming, comforting and infused with holiday spirit. Briskness-2 Body-2 Aroma-4 Available in **Sachets**

Williamsburg Summer Afternoon

Delight in the pleasures of a summer afternoon in a timeless garden! These garden images are drawn from 18th century botanical illustrations in our archives. They represent native Virginia flowers found in Colonial Williamsburg's carefully tended historic gardens. Enjoy this blend of green tea, lemon peel, verbena, marigold petals, cornflowers, natural grapefruit flavor, natural honey flavor. Delicious hot or iced. Briskness-1 Body-2 Aroma-3 Available in **Sachets**

Death on the Nile

We present to you the Death on The Nile blend. Our tea is an homage to Poirot's love of tisanes. Chamomile flowers, ginger root, peppermint, coriander seeds, cinnamon chips, fennel seeds, whole cloves, and ground cloves blend in a rich and satisfying brew that is full of Eastern promise. Briskness-1 Body-1 Aroma-3 Available in **Sachets**

Haunting in Venice

"A Haunting in Venice," an unsettling supernatural thriller based upon the novel "Hallowe'en Party" by Agatha Christie and directed by and starring Oscar® winner Kenneth Branagh as the famed detective Hercule Poirot. Briskness-2 Body-2 Aroma-4 Available in **Sachets**

Murder on the Orient Express

What starts out as a lavish train ride through Europe quickly unfolds into one of the most stylish, suspenseful and thrilling mysteries ever told. Discover this smoky and citrusy black tea inspired by the riveting tale. Blended from black tea, oolong tea, jasmine tea, and bergamot oil, this tea has a following that isn't a mystery at all. Briskness-2 Body-3 Aroma-3 Available in **Sachets**



A REFRESHING TAKE ON HARNEY

BLOOD ORANGE

Steeped hibiscus flowers and apple chips with sunny blood orange peel and no caffeine!

BUTTERFLY LEMONADE

The vibrant blue and purple hues of the Butterfly Pea Flower from Southeastern Asia are masterfully blended in our organic lemonade.

ORGANIC AMERICAN BUZZ MINT

A minty brewed infusion of yaupon, guayusa and yerba mate, which all have caffeine, and spearmint which doesn't.

ORGANIC AMERICAN BUZZ TURMERIC ORANGE

A zippy infusion of yaupon, guayusa and yerba mate, which all have caffeine, and topped off with turmeric and orange juice.

ORGANIC CRANBERRY

Inigorates your palate with every sip. The kick of cranberry, intense and stimulating, leaves you craving more.

ORGANIC GREEN TEA WITH CITRUS & GINGKO

Appeals to health-conscious individuals seeking a beverage both beneficial and refreshing.

ORGANIC GREEN TEA WITH COCONUT

Transports the green tea lover to distant realms with its aromatic fusion of coconut, ginger, vanilla and lemongrass.

Bright, Colorful, Ready to Grab and Go Bottles

Harney's collection of natural, healthy and oh-so-refreshing drinks in a bottle are bursting with goodness—and good looks. Take them on the road, in your car, on your bike, and of course, keep plenty in your refrigerator for easy, everyday refreshment. They're sure to make anyone smile.

ORGANIC LEMONADE AND TEA

Two summertime favorites, sweetened with cane sugar and honey. Each sip elicits a light sweetness and lovely tart finish.

ORGANIC LEMONADE

The taste of summer. We make it with the finest organic lemons, sweetened with organic cane sugar.

ORGANIC ORANGE MANGO

The smooth fusion of orange, mango, and tropical juices creates a uniquely delicious citrus drink.

ORGANIC PEACH TEA

Bright and delicate. The sweet summer flavor of freshly sliced peaches, followed by a pleasant surprise: the brisk note of tea.

ORGANIC SOBA GREEN ICED TEA

Combining floral Jasmine green tea with toasty Soba Buckwheat creates a unique flavor profile to ease your mind and cool you down.

ORGANIC SUPREME BLACK TEA

Our finest quality brisk black iced tea in an unsweetened version. It's simply delicious!

ORGANIC SUPREME GREEN TEA

Our finest quality green iced tea in an unsweetened version. Absolutely delicious!

ORGANIC SWEET TEA

Great tasting organic black tea is combined with organic cane sugar and still only 90 calories per bottle.



Celebrate with Beautifully Blended Green Tea

Bangkok (Green Tea with Coconut)

The rich flavors of Thailand inspired this tasty blend. It is a combination of green tea, lemongrass, vanilla, coconut and ginger. Briskness-2 Body-2 Aroma-4 Available **Loose**, in **Sachets** and in **Iced Tea Pouches**

Blueberry Green

For Blueberry Green, we've artfully blended green tea with lemongrass, blueberry, and vanilla to create a brew that is sure to hit all the right notes. Delicious hot or iced, with a blueberry and citrus finish. Briskness-3 Body-2 Aroma-4 Available **Loose**, in **Sachets** and in **Iced Tea Pouches**

Caribe

Black and green teas are blended with hibiscus, guava, coconut and strawberry, then accented with marigolds and cornflowers. Briskness-2 Body-2 Aroma-4 Available **Loose**

Chai Hara

We're happy to offer Chai Hara, a green tea version of our popular Chai tea. 'Hara' in Hindi means green, and ours features green tea with cardamom, cinnamon, coriander and ginger. Many enjoy this blend with milk. Briskness-3 Body-3 Aroma-3 Available **Loose**

Cherry Blossom

Try our delectable blend of green teas and the vibrant flavor of plump, fragrant cherries. Inspired by an April visit to Tokyo, Cherry Blossom brightens the spirits and awakens the senses. Briskness-2 Body-2 Aroma-3 Available **Loose** and in **Sachets**

Chinese Flower

Our Chinese Flower tea is a joy for the eyes and the palate. A beautiful and aromatic blend of Chun Mee and three types of flower petals, you'll notice accents of citrus flavors. Briskness-2 Body-2 Aroma-4 Available **Loose** and in **Sachets**

Green Apple Spice

The flavors of apple, cinnamon, orange peel, cloves, and notes of honey are reminiscent of a homemade apple pie straight from the oven. Briskness-2 Body-2 Aroma-4 Available in **Sachets**

Green Hot Cinnamon Spice

We start with Chinese green tea, then add three types of cinnamon. The result is lighter in body than the original made with black tea, but still with bracing cinnamon flavors that our Hot Cinnamon enthusiasts adore. Briskness-2 Body-2 Aroma-5 Available **Loose** and in **Sachets**

Island Dreams

A refreshing, dreamy blend of green tea with sweet pineapple and coconut flavors, finished with a hint of rum. Sit, sip and drift away. Enjoy hot or iced. Briskness-1 Body-3 Aroma-2 Available **Loose**

Jane's Garden Tea

It is in Jane Lloyd's memory, a lifelong friend, that Jane's Garden Tea was blended during her battle against breast cancer. One dollar of the proceeds from the sale of each tin will be shared by the Jane Lloyd Fund and the National Breast Cancer Foundation. Briskness-1 Body-1 Aroma-2 Available **Loose** and in **Sachets**

Lemony Gunpowder

Gunpowder tea dates back to the Tang Dynasty 618-907, and was first introduced to Taiwan in the nineteenth century. Lemony Gunpowder is based on traditional Gunpowder green tea with a hint of lemon added to brighten the flavor. Briskness-3 Body-3 Aroma-4 Available **Loose**

Organic Green with Citrus & Ginkgo

This refreshing blend delivers the benefits associated with green tea and ginkgo, with the bright taste of natural citrus. Briskness-3 Body-2 Aroma-3 Available **Loose**, in **Sachets**, in **Tea Bags** and **Iced Tea Pouches**

Organic Moroccan Mint

Our take on the traditional Arabian beverage. We blend Gunpowder Green tea with aromatic peppermint leaves to create a brisk beverage you'll love. Briskness-4 Body-3 Aroma-3 Available **Loose**

Tokyo

Japan's capital city of Tokyo inspired our delightful green tea blend of Bancha with toasted sesame seeds and caramel flavors. Recalling our many visits there, we wanted to create a taste reminiscent of the city's impeccably presented desserts. Briskness-2 Body-2 Aroma-3 Available **Loose**

Tropical Green

Tropical Green combines some of our finest hand-picked green teas from China in a beautiful mélange with a smooth palate, bright aromas, and vibrant pineapple character. A tropical twist on traditional green tea equally suited to satisfying old cravings and new indulgences alike. Briskness-2 Body-2 Aroma-4 Available **Loose**, in **Sachets** and **Tea Bags**

Tausug Blend

This special Tausug Tea Blend was exclusively created by Harney & Sons with the Royal Warrant of His Royal Majesty Sultan Muedzul-Lail Tan Kiram, the 35th Sultan of Sulu and North Borneo. The Royal Sultanate of Sulu is committed to promulgating peace, education, climate change awareness, and economic development in the Sulu Archipelago. Briskness-3 Body-2 Aroma-4 Available in **Sachets**

GREEN TEAS WITH A TWIST

Green tea is rich in polyphenols and antioxidants that help boost brain and heart health—as well as many delectable possibilities. We start with light and sweet Bancha or the more strongly flavored Gunpowder or Chun Mee, then we get even more creative—with flavors, flowers, and other botanicals to treat your taste buds and your mind and body exceptionally well.

Discover more amazing flavors at: [harney.com/flavored-greens](https://www.harney.com/flavored-greens)



Expand Your Tea Horizons with White Teas

Think tea is only brown? White tea presents one of the purest expressions of the tea plant—yet it's so often misunderstood. Barely processed, light and refined, a young tea bud is plucked just before the leaf opens on the stem, and air-dried to lock in its color and flavor. It grows to a bright green, fades to silver, and brews to a pale yellow. The liquor yields not only the lightest color, but also the leanest body—as compared to the creaminess of oolongs and the brisk pucker of British Legacy teas. Sip on a cup of white tea and you'll find the aromas and flavors wonderfully subtle, with sweet notes and wisps of floral aromas, evoking jasmine and rose.

African Antlers

African Antlers is a truly unique white tea from Malawi, made primarily of twigs and buds. The flavors are reminiscent of lightly cooked peaches. Explore Africa's diversity! Briskness-1 Body-1 Aroma-2 Available **Loose**

Ceylon Vintage Silver Tips

A rare white tea made just for us from the terminal buds of tea bushes grown high in Sri Lanka. Its flavor is light, sweet and sublime. Briskness-1 Body-2 Aroma-2 Available **Loose**

Chinese Silver Needle

This is the original white tea made from the Da Bei tea bush in Fuan, Fujian Province. Mike has visited Fuan many times. Since it is air-dried in the traditional fashion, the brew has some fruit and vegetal notes. Briskness-1 Body-2 Aroma-2 Available **Loose**

Mutan White

An excellent introduction to rare white tea. This white tea has an abundance of silvery white buds and green leaves and comes from Fuan in northern Fujian Province, China. Briskness-1 Body-2 Aroma-2 Available **Loose**

Provence

Inspired and created by our French intern, Marine. Her idea was simple: to transport you to her native region of Provence. Inspired by the fields of lavender, apricots, and lemon found in the French towns that border the Mediterranean. Briskness-1 Body-1 Aroma-4 Available in **Sachets**

Royal Wedding Tea

We're proud to have been commissioned by the Historic Royal Palaces organization to create this tea. It's a beautiful and aromatic blend of Chinese Mutan White tea buds, almonds, coconut and vanilla to taste. Briskness-1 Body-2 Aroma-4 Available **Loose**

Venetian Tiramisu

Indulge your senses in the flavors of Venetian Tiramisu tea. Evocative and romantic, each cup begins with a blend of delicately floral Mutan white tea and toasty Japanese Hojicha. Briskness-1 Body-2 Aroma-3 Available **Loose** and in **Sachets**

White Peach

A calming cup, vaguely sweet with a feathery fruit aroma, suggesting a lightly sweet nectar quality at once ethereal and sublime. Briskness-1 Body-1 Aroma-4 Available **Loose** and in **Sachets**

Wedding – A Tea for Marriage

We created Wedding Tea as an elegant blend for your momentous event. It features Mutan White tea with lemon-vanilla to taste, with a touch of pink rosebuds and petals. Briskness-1 Body-2 Aroma-4 Available **Loose** and in **Sachets**

White Christmas

Recline in front of a glowing fire and sip from this warm and nutty blend, the perfect winter wonderland. Briskness-1 Body-2 Aroma-4 Available **Loose** and in **Sachets**

White Vanilla Grapefruit

Our cleansing white tea blend of White Vanilla Grapefruit is enriched by vanilla, and brightened by the clear citrus notes of grapefruit. Its vanilla aroma adds a pleasantly indulgent touch. Briskness-1 Body-2 Aroma-4 Available **Loose** and in **Sachets**

Winter White Earl Grey

A perennial favorite that combines beautiful Chinese Mutan White tea with natural lemony bergamot. It is a pleasure to drink during any season. Briskness-1 Body-2 Aroma-4 Available **Loose** and in **Sachets**

AN ASTONISHING ARRAY OF FLAVORS AND AROMAS

Ali San

Ali San is a high mountain tea from Taiwan and among the creamiest of oolongs. Now we all can appreciate the lovely lemony and creamy flavors of this lightly oxidized oolong. Briskness-1 Body-3 Aroma-4 Available **Loose**

Dong Ding Light

Dong Ding Light is one of the original oolongs, made in the mountains in the middle of Taiwan. There are two schools of production, and we like to offer both. This is one we have sourced over the years, and is a lightly roasted oolong with nice lemon and vegetal flavors. Briskness-1 Body-2 Aroma-3 Available **Loose**

Fanciest Formosa Oolong

The tea plant protects itself from attack by creating a compound that produces a great peachy aroma. It is absolutely delicious! Briskness-1 Body-1 Aroma-4 Available **Loose**

Fenghuang MiLan

Ever since Mike visited the Fenghuang Mountains in Northern Guangdong Province all those years ago, he has insisted on having a great Milan oolong. This one meets his standard. Briskness-2 Body-1 Aroma-4 Available **Loose**

Formosa Oolong

A brown oolong with a toasty flavor that generations have loved. It is oxidized to about 75%, so it is darker than most other oolongs. Briskness-1 Body-2 Aroma-2 Available **Loose** and in **Sachets**

Ginger's Oolong

When we add ginger to our peachy and delicious Formosa Oolong, we create Ginger's Oolong, a fun and flavorful spin on our popular Peaches & Ginger. Briskness-1 Body-2 Aroma-3 Available **Loose**

A sip from a light oolong can taste like a walk through a garden packed with lilacs, gardenias and jasmine. A darker oolong can smell like a bakery right after it has baked a round of peach pies. From their own cultivar of *Camellia sinensis* and their singular methods of production, oolongs bridge the gap between green and black teas, with a spectrum of colors, flavors and aromas. Unlike most teas, they improve with multiple brewing, so sample a cup or two from China or Taiwan—or perhaps sample them gong fu style, brewing the tea in several rounds.

Milky Oolong

Milky oolongs are very popular in Eastern Asia for their sweet, creamy flavors. This one is smooth and the aroma of warmed cream is delicious! Briskness-2 Body-2 Aroma-2 Available **Loose**

Pomegranate Oolong

The extra large rolled leaves of Ti Quan Yin Oolong are deliciously infused with tangy pomegranate to create this inspiring blend. Briskness-1 Body-2 Aroma-4 Available **Loose** and in **Sachets**

Ti Quan Yin, Spring Floral

We searched through Anxi county in Fujian Province to find a tea that captures the high floral notes and nice body of oolong, yet isn't too expensive. The tiny greenish balls of this tea can be re-brewed several times. Briskness-1 Body-3 Aroma-3 Available **Loose**

Top Ti Quan Yin

Top Ti Quan Yin is the best tea out of northern Fujian Province. The finest aroma and body is what we aim for, and this year's version has it. It is an intense mixture of butter and honey, even honeysuckle flowers, reminiscent of great Burgundy white wine. Briskness-1 Body-3 Aroma-4 Available **Loose**

Wenshan Baozhong

This tea is so fragrant, you can't stop smelling its complex blend of tropical floral fragrances. It reminds us of gardenias: lovely, lilting floral notes in the aroma and good body. It is always a joy to drink! Briskness-1 Body-2 Aroma-5 Available **Loose**



Black Teas That Go Well Beyond the Ordinary

All India Blend

This is a blend of the three best areas for tea: Assam, Darjeeling and Nilgiri. Each tea brings something: body, aroma and briskness, so the "melange" is a delight. Briskness-3 Body-3 Aroma-3 Available **Loose**

Anniversary Blend

This is an update of a classic blend of Ceylon & India that John Harney started selling back in 1983. For our 25th Anniversary in 2008, we added Ceylon Silver Tips and Assam Golden Tips. Briskness-3 Body-3 Aroma-2 Available **Loose**

AOH Hibernian Blend

The Ancient Order of Hibernians have helped their fellow Irish in America for many years and receive a portion of the sales of this tea to assist their programs. We developed this strong tea from two tea estates in Kenya. Briskness-4 Body-4 Aroma-2 Available **Loose** and in **Sachets**

Big Red Sun

We've combined Kenya Milima's golden tips and bold Ceylon leaves from Kenilworth Estates to create a brew that's full-bodied but mellow and smooth. Briskness-3 Body-3 Aroma-2 Available **Loose** and in **Sachets**

East Frisian

Cold, wet, and dreary, Germany's North Sea coast (East Frisia) is the ideal spot to drink hot tea. And the East Frisians do! They consume more black tea than anyone else in the Western world. Briskness-4 Body-5 Aroma-2 Available **Loose**

Eight at the Fort

Our signature blend of eight teas, created especially for the historic 1997 dinner attended by the Group of Eight world leaders high in the mountains above Denver. Briskness-2 Body-4 Aroma-3 Available **Loose**

Golden Blend

Golden Blend, a recent blend of Golden Monkey from Fujian Province, with Assam FTGFOP. This combination makes a substantially great tea. Delicious with milk and sugar. Briskness-2 Body-4 Aroma-2 Available **Loose**

HarSha

Mike developed this fulfilling breakfast tea, blending extraordinary broken tippy Assam to give body and depth, and muscatel Darjeeling. Briskness-3 Body-4 Aroma-4 Available **Loose**

Ceylon & India (Orange Pekoe)

This is a classic, satisfying blend of strong Assam and smooth liquoring Ceylon. John Harney drank this tea whenever he needed a mellow, comforting cup. Briskness-4 Body-3 Aroma-2 Available **Loose**, in **Sachets** and in **Tea Bags**

Palm Court

The center of New York's tea world is the Plaza Hotel's Palm Court. This blend of four teas lets you have a cup at home and imagine you're on Fifth Avenue. Briskness-3 Body-3 Aroma-2 Available **Loose** and in **Sachets**

Queen Catherine

This blend of three Chinese black teas honors Queen Catherine, wife of Charles II, who brought tea drinking to the English Royal Court. Briskness-1 Body-3 Aroma-2 Available **Loose** and in **Sachets**

How often we hear, "Black tea, it's all the same—and it's just regular tea, right?" Black teas are anything but ordinary, especially with flavors that run the gamut—from malty, smoky and fruity, to earthy and honeyed. Explore, sip and savor a world of Chinese Black Teas and British Legacy Teas, originating from Britain's tea plantations in India and Sri Lanka.



DELICIOUS SIP AFTER SIP AFTER SIP

Double down on delicious! Our eight bestselling teas are so good, tea connoisseurs keep coming back for more and more. From Paris and Japanese Sencha to English Breakfast—one of our six foundation teas—these eight are a true celebration of taste.

DRAGON PEARL JASMINE

Exquisite little hand-rolled pearls from Fuan, China, infused with floral essences from jasmine flowers. The light colored brew is full of floral and sweet aromas. Always a delight!
Briskness-1 Body-2 Aroma-5
Available **Loose** and in **Sachets**

ENGLISH BREAKFAST

This ancient pedigree has been enjoyed since the 1800s. Harney & Sons blend is 100% Keemun with hints of cocoa, a little honey and a toasty aroma. A simply delicious way to wake up.
Briskness-1 Body-3 Aroma-2
Available **Loose**, in **Sachets** and in **Tea Bags**

EARL GREY SUPREME

We offer Earl Grey Supreme for the connoisseur. It uses a higher grade of teas along with the addition of Silver Tips. If you love bergamot and fine tea, this is the blend for you. One of Elyse Harney's favorite teas.
Briskness-2 Body-2 Aroma-4
Available **Loose**, in **Sachets** and in **Tea Bags**

HOT CINNAMON SPICE

Our most popular tea worldwide, it is an assertive blend of black tea, three types of cinnamon, orange peel and sweet cloves. No sugar added, and none needed.
Briskness-2 Body-2 Aroma-5
Available **Loose**, in **Sachets** and in **Tea Bags**

JAPANESE SENCHA

A true Sencha from Japan, ours is a popular, pleasant and approachable green tea. A fine choice for every day. Our founder, John Harney, always began his mornings with this cup.
Briskness-3 Body-3 Aroma-3
Available **Loose**, in **Sachets** and in **Tea Bags**

PARIS

Mike Harney's homage to the tea shops of Paris has become one of our most popular blends the world over. Paris is a fruity black tea with vanilla and caramel flavors, and a hint of lemony Bergamot. The aroma - and experience - is delightful!
Briskness-2 Body-2 Aroma-4
Available **Loose**, in **Sachets**, in **Tea Bags** and, **Iced Tea Pouches**

PEPPERMINT HERBAL

Our marvelously brisk Peppermint comes from the Pacific Northwest, and the leaves produce a wonderfully aromatic and crisp tasting tisane. We find a cup of Peppermint can also get a pesky stomach under control in no time and provides a warming brew anytime.
Briskness-1 Body-1 Aroma-5
Available **Loose**, in **Sachets** and in **Tea Bags**

VICTORIAN LONDON FOG

Evocative, warming, fragrant and delectable, a sip is a trip to one of our favorite cities. Black tea mixes and mellows with oolong tea, bergamot oil, lavender and vanilla. Victorian London Fog was the winning blend in our very first customer creation contest!
Briskness-2 Body-2 Aroma-4
Available **Loose** and in **Sachets**

Blended to Absolute Perfection

As if our black teas weren't delicious enough, we made a good thing even better by infusing it with black currant, not to mention notes of vanilla, chocolate, bergamot, apricots, cranberries, apple, cinnamon, lemon, cardamom and more. The smooth flavors blend beautifully with the background taste of tea to give your taste buds an absolute treat. It's no wonder our flavored black teas are some of our most popular teas.

Apple Cinnamon

The first blend that Emeric Harney developed, it reminds you of a nippy New England autumn when you can smell the delicious aroma of fresh picked apples and spice. Briskness-2 Body-2 Aroma-4 Available **Loose**

Apricot

Apricot is an elegant black tea enhanced by the warm, almost nutty, flavor of apricot. A customer favorite that's delicious served hot or iced. We have a Decaf Apricot if that's your preference. Briskness-2 Body-2 Aroma-4 Available **Loose** and in **Sachets**

Boston

A flavorful blend of black tea, cranberry, and almond flavors, this tea was inspired by the famous bogs south of Boston. Like other Back Bay pastimes, it has acquired an ardent group of admirers. Briskness-2 Body-2 Aroma-4 Available **Loose**



Chai

We created Chai, our ultimate sweet and spicy chai tea, when some of you told us that our Indian Spice wasn't hitting all the right notes. The blend features black tea from India, spices, and vanilla flavors. Briskness-4 Body-4 Aroma-4 Available **Loose**, in **Sachets** and in **Tea Bags**

Chocolate Chai Supreme

Our Chocolate Chai Supreme combines the flavors of a classic chai with rich chocolate and vanilla. To a base of blended Chinese and Indian black teas, we add ginger root, cardamom seeds and pods, cinnamon (ground and in chips), and nutmeg. Briskness-1 Body-3 Aroma-4 Available **Loose** and in **Sachets**

Elyse's Blend

A delicious tea named for the two Elyses in the Harney family. Tippy Assam and Kenyan teas are blended with Kenilworth Ceylon, then slightly sweetened with honey flavors. Briskness-2 Body-3 Aroma-3 Available **Loose**

Florence

This decadent blend of chocolate and hazelnut flavors will satisfy your sweet tooth with every cup. Briskness-2 Body-2 Aroma-4 Available **Loose**

Fruits d'Alsace

Inspired by the delicious Alsatian cuisine of Chef Jean Joho, this dessert tea is imbued with flavors of tree fruits found in that region of France: apricots, cherries, and plums. Briskness-2 Body-2 Aroma-4 Available **Loose**

Indian Spice

For many years, our Indian Spice was our only black tea version for what many people know as "chai." Assam tea, freshly ground cardamom, and spices combined together create this hauntingly subtle spice tea blend. Briskness-4 Body-4 Aroma-4 Available **Loose**

Paris

Reminiscent of one of the most popular blends in Paris, this fruity black tea with a hint of lemony Bergamot is a delight. Briskness-2 Body-2 Aroma-4 Available **Loose**, in **Sachets**, **Tea Bags** and **Iced Tea Pouches**

Peaches & Ginger

This popular blend combines the irresistible flavors of fresh peaches with the "zing" of ginger. Enjoy it hot or iced. Briskness-2 Body-2 Aroma-4 Available **Loose** and in **Sachets**

Rose Scented

Our memorable blend of large leaf tea from China is scented with rose flavor and soft pink rosebuds. Briskness-1 Body-2 Aroma-3 Available **Loose** and in **Sachets**

SoHo Blend

Embodying the flavors of some of SoHo's best sweet shops, this blend is a combination of black tea with chocolate, coconut, and vanilla flavors, topped with a dash of amaranth petals. Briskness-2 Body-2 Aroma-4 Available **Loose** and in **Sachets**

Vanilla Black

A natural sweetness and rich flavor makes Vanilla Black tea an irresistible delight. Its aroma awakens memories of baking sugar cookies with your grandmother. This tea is also available without caffeine so you can enjoy it anytime, day or night. Briskness-2 Body-2 Aroma-4 Available **Loose**

For more to smile about, visit:
harney.com/flavored-black-tea

Drink to Good Health

Did you know that true teas—including black, green, white, dark and oolong—can be good for your health? That's because they're loaded with flavan-3-ols, a group of plant compounds linked to improved health for decades. These same compounds can be found in berries, raisins, apples and dark chocolate, but true teas have the highest concentration of flavan-3-ols. How much do you need to drink each day to enjoy these health benefits? Data shows that consumption of 400-600 mg of flavan-3-ols daily (about 2 cups of brewed true tea) can help improve blood pressure, cholesterol and blood sugar. Flavan-3-ols have even been shown to help protect the body's cells from damage as we age. That's great news, so sip, smile and celebrate good health!

Ichiban Sencha

Ichiban Sencha is the first production from the all-important Kakegawa area within Shizuoka, Japan's most important tea growing prefecture. This bracing, lemony tea is an assertive example of the popular style of deep steamed (Fukamushi) Sencha. Briskness-2 Body-3 Aroma-2 Available **Loose**

Lung Ching

Lung Chings are famous worldwide, known as some of the best Chinese green teas. Our Lung Ching is made by a respected producer two hours beyond the traditional area. The small green leaves make for a brew that has a mild and sweet almost nut-like flavor. Since Lung Ching teas are consistently in demand, the price is dictated by the market. Briskness-1 Body-2 Aroma-3 Available **Loose** and in **Sachets**

Matcha iri Genmaicha

Matcha is a much beloved green tea in Japan, yet it can seem intense to the uninitiated westerner. As an alternative, we suggest Matcha iri Genmaicha, the best of both worlds. The Bancha ("cha") leaves and brown rice ("genmai") that comprise Genmaicha are coated with Matcha green tea powder, and the result is fantastic! Briskness-2 Body-2 Aroma-3 Available **Loose** and in **Sachets**

Matcha Jobetsugi (Thin Grade)

Matcha powdered green tea has been the pride of Uji for several centuries. Our Thin Grade Jobetsugi pairs well with chocolates. Briskness-3 Body-3 Aroma-2 Available **Loose**

Matcha Senjunomukashi (Thick Grade)

Matcha powdered green tea has been the pride of Uji for several centuries. The Senjunomukashi (Thick Grade) has been used traditionally in the Japanese tea ceremony. Briskness-3 Body-3 Aroma-3 Available **Loose**

Matcha Unjonotomo (Extra Thick Grade)

Matcha powdered green tea has been the pride of Uji for several centuries. The award-winning Unjonotomo (Extra Thick Grade) is our super-premium matcha made from shade-grown Tencha leaves. It is thick and sweet, with luxurious vegetal flavors that create an extraordinary beverage. Briskness-3 Body-4 Aroma-3 Available **Loose**

Organic Everyday Matcha

Not every day is special, so we found this good organic matcha that works every day. A perfect choice for iced matcha, lattes and a potent addition to a daily smoothie. Briskness-4 Body-4 Aroma-2 Available **Loose**

Organic Matcha

Infuse green matcha goodness into any and every day with our Organic Everyday Matcha. A familiar sight in Japan, this fine powdered green tea lends vibrant color and refreshingly light, vegetal flavor to lattes, smoothies, and even baked goods. For long workdays and weekend explorations alike, this organic matcha is the perfect companion to your everyday. Try it hot, iced, or sweetened up with a swirl of honey. It also can be used for tasty matcha lattes! Briskness-3 Body-4 Aroma-2 Available **Loose**

Roasted Buckwheat (Soba) Matcha

A mellow alternative to our popular Matcha iri Genmaicha, this matcha is silky-smooth and features a hint of sweetness from the buckwheat or soba. Full of earthy, warm flavors but light on the tongue, this matcha is easy to make and easier to enjoy. Perfect for those who love the roasted, nutty flavors of Korean buckwheat teas, and equally ideal for someone wanting to explore the world of matcha in a mellow, forgiving way. Briskness-2 Body-3 Aroma-4 Available **Loose** and in **Sachets**

Very Berry Matcha

Brighten your day with vibrant Very Berry Matcha. It's a gorgeous green with strawberry-raspberry flavor, plus dried goji berries. Briskness-2 Body-3 Aroma-3 Available **Loose** and in **Sachets**

White Peach Matcha

An exquisite, innovative twist on matcha that'll appease even the most traditional fans of the brew, this blend is full of bancha, juicy peach flavors, and dried peaches, creating a lighter, enjoyably refreshing matcha. Briskness-2 Body-2 Aroma-4 Available **Loose** and in **Sachets**

Yanagi Premium Green

Japanese teas are popular because people like the aromas, flavors, and even the elevated levels of antioxidants. We offer Yanagi as a value-based alternative to some of the more costly greens, so you may enjoy Sencha flavors more often. Briskness-2 Body-2 Aroma-2 Available **Loose**



A TIME-HONORED TEA

Earl Grey tea has been a long-time favorite among Harney & Sons customers—and British royalty. Legend has it that Charles Grey, the 2nd Earl Grey, ruled as prime minister of the United Kingdom from 1830 to 1834, during which time, a scented tea was sent to him as a gift. After his supply dwindled, he asked a prominent tea company to replicate it. Today, our popular Earl Grey Supreme would make the Earl smile—with our proprietary blend of black tea, oolong and even white teas, scented with bergamot, a type of citrus.

Diamond Jubilee

In 2012, Elizabeth II celebrated her Diamond Jubilee. We created this blend specially to honor the Queen and her achievements. Inspired by Earl Grey, our Diamond Jubilee blend combines black teas with the lemony flavors of bergamot and citrus-filled grapefruit essences for a light yet complex twist on the Queen's favorite tea. Briskness-3 Body-3 Aroma-3 Available **Loose**

Earl Grey

Perhaps the world's best known tea, inspired by the British Prime Minister, Earl Grey. There are as many different versions of Earl Grey as there are tea companies. Our popular blend uses teas from India and China, blended with natural oil of bergamot. Briskness-1 Body-3 Aroma-3 Available **Loose** and in **Sachets**

Decaf Earl Grey

Our Decaf Earl Grey starts with our Decaf Ceylon, to which we add the scent of natural oil of bergamot, found in traditional Earl Grey blends. Flavor is excellent and all you miss is the caffeine. Briskness-1 Body-2 Aroma-2 Available **Loose**, in **Sachets** and in **Tea Bags**

Earl Grey Imperial

This Earl Grey is part of our distinguished line of Historic Royal Palace blends which were created especially for the Historic Royal Palaces of England. A blend of fine black teas, rich in natural bergamot. Briskness-2 Body-2 Aroma-4 Available **Loose** and in **Sachets**

Earl Grey Supreme

For the connoisseur we offer Earl Grey Supreme, which uses a higher grade of teas with the addition of Silver Tips. Most of our customers never go back to our regular Earl Grey once they taste the Supreme. If you love bergamot and fine tea, this is for you! Briskness-1 Body-2 Aroma-4 Available **Loose** and in **Sachets**

Earl Grey Viennese

Viennese Earl Grey is a graceful variation, inspired by our friend Andrew Demmer's Teehaus in Vienna. It has a Darjeeling base, so it is lighter than other Earl Grey versions. You'll still notice and enjoy its lovely lemony notes from the bergamot. Briskness-3 Body-2 Aroma-3 Available **Loose**

Organic Earl Grey

Our Organic Earl Grey is a nice blend of an Assam from the northern bank of the Brahmaputra River and a Korakundah located in southern India, with natural oil of bergamot. Since both are organic teas, the aroma is light and subtle, allowing the lemony bergamot to be more pronounced. Briskness-1 Body-2 Aroma-4 Available **Loose**

Sally's Secret

Sally's Secret is our celebration of life, love and fine tea. We present this aromatic blend in memory of our co-worker Sally, whose expert blending, steady friendship and love of all things pink we miss each day. Enjoy a cup of this lovely blend of our Earl Grey and pink rosebuds with a friend. Briskness-1 Body-2 Aroma-3 Available **Loose**

Victorian London Fog

Traditionally, the drink called Victorian London Fog is an Earl Grey served with steamed milk. Victorian London Fog was the winning blend in our very first customer creation contest! It is a delectable mix of black tea, oolong tea, bergamot oil, lavender, vanilla flavor. Briskness-2 Body-2 Aroma-4 Available **Loose** and in **Sachets**

Winter White Earl Grey

Winter White Earl Grey has become a perennial favorite tea. It combines beautiful Chinese Mutan White tea with natural lemony Bergamot, and is a pleasure to drink during any season. Briskness-1 Body-2 Aroma-4 Available **Loose** and in **Sachets**



CHILL WITH TEA ON THE ROCKS

When the temperature rises, sit down, sip and savor a tall glass of iced tea. Our Fresh Brewed Iced Tea Pouches serve up 2 quarts of your favorite Harney & Sons tea—the perfect elixir for hot summer months, or any time.

Black Currant

Our first flavored tea, Black Currant combines a robust base of bold black tea with big, fruity berry flavors. Known as a traditional favorite in fine restaurants across the United States.

Available in **Iced Tea Pouches**

Blueberry Green

Our Blueberry Green tea combines the light, fragrant body of a traditional green tea with one of America's most beloved farmstand summer fruits.

Available in **Iced Tea Pouches**

Blood Orange

Blood Orange packs the exquisite flavors of a delicious herbal tea with the relaxing, refreshing character of fruity infusions. This fruity blend is a brilliant red once brewed, with a mouthwatering aroma and bold fruity flavors with a hint of tang.

Caffeine-free.

Available in **Iced Tea Pouches**

Indigo Punch

Vibrant, colorful and full of crisp, fruity flavors combined with the delicate tang of rose hips and apple pieces. The earthy tones of the gorgeous butterfly pea flower make this a unique blend. Bright lemongrass, lemon peel, and vivid raspberry round out the palate with natural honey flavor for a touch of sweetness. Caffeine-free.

Available in **Iced Tea Pouches**

Classic Black

A tried and true classic, our Organic Chinese black tea revitalizes with every sip. Long before they reach us, our full leaves are picked by hand, so that each leaf's sweet character and bright, rich body remains intact. Nice with ice and lemon or a drop of honey.

Available in **Iced Tea Pouches**

Passion Fruit

We've blended full leaf Chinese black tea picked by hand with the sweet flavors of passion fruit to create a fresh, tropical brew that indulges the mind and the tongue at once.

Available in **Iced Tea Pouches**

Invigorating Peach

Cool down with a deliciously refreshing southern-style Peach Iced Tea. Built on a base of full leaf Chinese black tea picked by hand, exquisite notes of Georgia peaches dance across the palate. The result of this beautiful medley is an iced tea that's pleasantly sweet and earthy.

Available in **Iced Tea Pouches**

Tangy Raspberry

Our Raspberry Herbal was created as a healthful indulgence. A blend of floral rose hips, tropical hibiscus, fresh raspberry leaves and flavor create the base of this delectably bright tisane; peel from oranges and lemons play against spearmint, apple, and peppermint to round off this tea's light, refreshing body. Caffeine-free.

Available in **Iced Tea Pouches**

Soothing Vanilla

Our Soothing Vanilla combines classic flavors to create a deceptively simple and thoroughly irresistible brew. A rich, mellow black tea creates a hearty but welcoming base, while a swirl of natural vanilla flavor adds creamy depth and a touch of natural sweetness. A perfectly fresh indulgence that's easy to enjoy anytime.

Available in **Iced Tea Pouches**

Tropical Mango

Our deliciously fruity Tropical Mango, now designed specially to be iced. Juicy sweet mango, tropical coconut, and a blend of bright pineapple and orange complement a rich black tea base for an exquisite escape in every sip.

Available in **Iced Tea Pouches**

Watermelon Mint

Freshly brewed and poured over ice, this brew starts with a base of soothing green tea, then layers in crisp mint overtop juicy strawberry and watermelon flavors. The end result is a fruity, rejuvenating ode to the tastes of summer at their finest.

Available in **Iced Tea Pouches**



PREPARE TO FEEL OH SO GOOD

Agatha Christie's Hercule Poirot enjoyed his afternoon tisane, and you will too. These herbal teas, also known as herbal infusions, are a delightful blend of herbs, flowers, spices, and dried fruit. The unique combinations of quality ingredients in our tisane blends can create a soothing and revitalizing experience—plus, they come in over 60 different blends, most of which are caffeine-free, leaving you with plenty of reasons to smile.



Amba Lemongrass

A refreshing and medium-bodied caffeine-free herbal with a delightful citrus aroma. It has an approachable lemon flavor with a light freshness.
Briskness-2 Body-1 Aroma-5
Available **Loose**

Bamboo

Bamboo grows in abundance near many tea farms in China. One of the highlights of every trip we make there is enjoying fresh bamboo served with our meals. We are pleased to offer you dried bamboo leaves to prepare as a tisane.
Briskness-1 Body-1 Aroma-2
Available **Loose**

Butterfly Pea Flower

This Thai flower infusion comes to us directly from Thailand and people love the bright blue color and the fact that it changes color to a nice purple color when some acid (like lemon juice) is added.
Briskness-2 Body-2 Aroma-2
Available **Loose**

Chamomile

Harney & Sons sources the finest Egyptian chamomile flowers from Egypt. The result? A premium herbal tea with light body that is perfect for winding down during a hectic afternoon at the office, or at home at the end of the day.
Briskness-1 Body-1 Aroma-2
Available **Loose**, in **Sachets**, and in **Tea Bags**

French Super Blue Lavender

This traditional herbal has a dark blue color and intense floral flavor. If you are a huge fan of lavender, this is the tea for you.
Briskness-1 Body-1 Aroma-5
Available **Loose**

Ginger Liquorice

This is a recent herbal blend requested by Mike's wife, Brigitte. It's spicy and sweet.
Briskness-3 Body-2 Aroma-4
Available **Loose** and in **Sachets**

Greek Mountain Herb

Handcrafted from the finest leaves harvested in the mountains of Greece, this tea transports you to a land rich in natural wonders. Delight in the harmonious fusion of earthy sage and zesty citrus notes, creating a truly exceptional and revitalizing cup.
Briskness-1 Body-3 Aroma-3
Available **Loose**

Holiday Herbal

Our Holiday Tea is popular all year long. For evenings, or times you'd like the flavors of citrus and holiday spices without caffeine, we made Holiday Herbal with a rooibos (red bush) base.
Briskness-1 Body-2 Aroma-3
Available **Loose**

Lemon Herbal

The predominant aroma of this delicious, delightful infusion is lemongrass. The addition of lemon rind and lemon flavor make this a light and soothing bedtime tea!
Briskness-1 Body-1 Aroma-3
Available **Loose** and in **Tea Bags**

Mint Verbena

An invigorating herbal that combines caffeine-free mint with lemon verbena.
Briskness-1 Body-2 Aroma-3
Available **Loose** and in **Sachets**

Mother's Day

A beautiful and refreshing caffeine-free herbal blend created in honor of all mothers. It features chamomile flowers blended with rosebuds, cornflowers, and orange peel, infused with citrus flavor.
Briskness-1 Body-1 Aroma-3
Available **Loose** and in **Sachets**

Olive Leaves

For those that love olives and olive oil, here is a reduced calorie way to get that lovely flavor.
Briskness-1 Body-2 Aroma-2
Available **Loose**

Organic Passion Plum

Long on taste with no caffeine, this herbal brew delivers delicious flavor with the added benefits of ginseng.
Briskness-1 Body-1 Aroma-3
Available **Loose** and in **Sachets**

Organic Peppermint

It's great to find a certified organic version of one of our favorite herbs!
Briskness-1 Body-1 Aroma-5
Available **Loose** and in **Tea Bags**

Peppermint Herbal

Our marvelously brisk peppermint comes from the Pacific Northwest and the leaves create a wonderful-smelling and crisp-tasting tisane.
Briskness-1 Body-1 Aroma-5
Available **Loose** and in **Sachets**

Raspberry Herbal

A delectable tisane of rose hips, hibiscus, raspberry leaves, and raspberry flavor.
Briskness-2 Body-1 Aroma-3
Available **Loose**, in **Sachets**, in **Tea Bags**, and in **Iced Tea Pouches**

Royal Chrysanthemum

We found this big yellow chrysanthemum from Anhui Province in Central China. This pretty yellow flower looks like a jewel and makes a lovely beverage.
Briskness-1 Body-2 Aroma-3
Available **Loose**

Soba Roasted Buckwheat Tea

Soba roasted buckwheat is a traditional Japanese specialty that is prepared as you would an herbal tisane. It is naturally caffeine-free, with a delightful toasty flavor and nutty undertones. It has long been one of Brigitte Harney's favorite drinks.
Briskness-1 Body-1 Aroma-3
Available **Loose**

Spearmint

Spearmint has popped up in some of our various blends and customers started to ask for it on its own. It can be enjoyed hot or cold.
Briskness-1 Body-1 Aroma-5
Available **Loose**

Spiced Plum Herbal

A herbal infusion with a delightful essence of cinnamon and plums.
Briskness-2 Body-1 Aroma-3
Available **Loose**

Lemon Verbena (Verveine)

We import large green Verveine leaves which offer an unusually good body for an herbal brew. Get ready for a wonderful flavor and a bright lemon yellow color and aroma.
Briskness-1 Body-1 Aroma-3
Available **Loose** and in **Sachets**

Yellow & Blue

A floral rapture that includes chamomile, lavender and cornflowers.
Briskness-1 Body-1 Aroma-3
Available **Loose** and in **Sachets**

For more tisane teas, visit:
<https://www.harney.com/collections/tisanes>

A Toast to Friends Across the Pond

Whether you're enjoying a cuppa in England, Scotland, Wales, or Northern Ireland, we raise our teacups in celebration of our friends across the UK. As an American company, we take great pride in our shared passion for the fine art of tea with tea lovers in the United Kingdom. Join us for a delightful collection that's certain to bring a smile to your face — from a morning wake-up call to Afternoon Tea or a soothing evening sip.

English Breakfast

Similar to the way it has been enjoyed since the 1800s, Harney & Sons blend is 100% Keemun with a toasty aroma and hints of cocoa and a little honey.
Briskness-1 Body-3 Aroma-2
Available **Loose**, in **Sachets** and in **Tea Bags**

Irish Breakfast

Our Irish Breakfast tea is 100% Assam, and like most traditional Irish blends, this is a great way to begin your morning. In contrast to other versions of Irish Breakfast tea, you could say ours is a little more sophisticated.
Briskness-2 Body-4 Aroma-3
Available **Loose**, in **Sachets** and in **Tea Bags**

Organic Breakfast

There are increasingly more options for organic teas from India. Our Organic Breakfast is a traditional blend of a light, malty Assam from the northern bank of the Brahmaputra River, mellowed by subtle citrus notes of Korakundah from southern India. It's a very nice combination for your morning tea, great by itself, or served with milk.
Briskness-2 Body-2 Aroma-1
Available **Loose** and in **Sachets**

Supreme Breakfast

We combine smooth and full-bodied teas from India and China to create this breakfast blend. A wonderful tippy Assam gives it a full body that is then smoothed by the rich distinctive flavor of Hao Ya 'B' Keemun.
Good morning, indeed!
Briskness-2 Body-4 Aroma-4
Available **Loose** and in **Sachets**

PUT ON THE KETTLE FOR A GOOD CAUSE

Drink up to good works, with our popular teas that support global causes, including healthcare and arts and culture foundations. Join us as we foster goodwill and of course, great taste!

Banting & Best Blend

More than a 100 years ago, two Canadian scientists, Frederic Banting and Charles Best discovered insulin. To honor their discovery, this naturally flavored black tea tastes sweet but has no sweetener.
Briskness-2 Body-3 Aroma-4
Available in **Sachets**

Jane's Garden

It is in Jane's memory, a lifelong friend and gardener, that Jane's Garden Tea was blended to show support during her battle against breast cancer. We are pleased to offer this rendition of green tea with pomegranate and roses.
Briskness-1 Body-1 Aroma-2
Available **Loose**

Shakespeare's Globe - A Midsummer Night's Tea

A portion of your purchase benefits the Globe Theatre. Delectable black and oolong tea is scented with orange, ginger, vanilla, rose petals, cornflowers and so much more. It creates a drama in your cup.
Briskness-3 Body-2 Aroma-3
Available in **Sachets**

Imperial Windsor Blend

Created in association with the Royal Society of St. George which promotes "Englishness" and the English way of life here is a thoroughly English tea. A blend of black tea and rose petals, as you drink it, remember to salute Her Majesty the Queen, but feel free to relax the stiff upper lip.
Briskness-3 Body-3 Aroma-1
Available **Loose**

Scottish Afternoon

This is a slightly more aromatic and mellow tea than Scottish Morn, however it is still a strong tea.
Briskness-4 Body-4 Aroma-1
Available **Loose** and in **Sachets**
A portion of the sales assists the American Scottish Federation.

Scottish Morn

This is one of our strongest teas, one that can take milk and sugar and leave your spoon standing upright.
Briskness-4 Body-5 Aroma-1
Available **Loose**, and in **Sachets**
A portion of the sales assists the American Scottish Federation.

Special English Breakfast

This strong tea was created in association with St. George's Society of New York, which has assisted people of British and Commonwealth heritage living in the New York area since 1770. A portion of the proceeds from each purchase of this tea supports the work of the charity.
Briskness-4 Body-4 Aroma-2
Available **Loose** and in **Sachets**

AOH Hibernian Blend

The Ancient Order of Hibernians have helped their fellow Irish in America for many years and receive a portion of the sales of this tea to assist their programs. We developed this strong tea from two tea estates in Kenya.
Briskness-4 Body-4 Aroma-2
Available **Loose** and in **Sachets**

A HEALTHY DOSE OF ROOIBOS TEA

Rooibos tea is fast becoming popular here in the States, but it's been enjoyed for centuries in South Africa. Also known as bush tea, red tea, or redbush tea, it's a type of herbal tea rich in antioxidants – with an earthy and soothing taste ready to make you smile. Word has it that it can also help to reduce inflammation and feelings of aches and pains, as well as certain chronic conditions. Plus, it's a flavorful, caffeine-free alternative to black and green tea.



African Autumn

A delicious marriage of herbal rooibos, cranberry, and oranges.

Briskness-1 Body-1 Aroma-3

Available **Loose** and in **Sachets**

Berry Cobbler

The winner of our 2022 Happy Blendings contest! This blend starts with a mellow bodied herbal base, then layers in blueberry, raspberry, vanilla and cinnamon. All that's missing is the ice cream.

Briskness-2 Body-1 Aroma-3

Available in **Sachets**

Herbal Hot Cinnamon Spice

We add three types of cinnamon to African Rooibos, making a delicious herbal drink. A good choice for those who want to give up caffeine, but not strong flavors!

Briskness-1 Body-1 Aroma-5

Available **Loose** and in **Sachets**

Organic Rooibos

A Harney favorite, it's bursting with healthy properties: low in tannins, naturally sweet, and is rich in essential minerals.

Briskness-1 Body-2 Aroma-2

Available **Loose**, in **Sachets**,

and in **Tea Bags**

Paris Herbal

Over the years, Paris has become one of our most popular teas. Many people love the complex blend of fruit, citrus and creamy vanilla, and for some this caffeine-free version makes a perfect nightcap.

Briskness-2 Body-1 Aroma-3

Available **Loose**

Pumpkin Spice

A warming blend of spices and pumpkin in a bright red, light-bodied brew.

Briskness-2 Body-1 Aroma-3

Available **Loose** and in **Sachets**

Organic Rooibos Chai

A wonderful mixture of caffeine-free Rooibos with sweet Indian spices of clove, cardamom, and cinnamon.

Briskness-1 Body-2 Aroma-4

Available **Loose** and in **Sachets**

Thai Rooibos

A spicy blend of caffeine-free herbs and spices, including Rooibos, cinnamon, ginger, coconut and lemongrass.

Briskness-2 Body-1 Aroma-4

Available **Loose**

MADE IN THE AMERICAS TEAS

Herbs native to the Americas bring with them their own unique and delicious flavors, some loaded with caffeine, others sourced "locally" from tea farms in Louisiana and Hawaii. In our quest to spread our tea "wings" and to share with you the very best of teas, we are delighted to offer up the very best flavors we have sourced from our tea partners and friends in North and South America. Try these tantalizing teas and discover new and old favorites alike.



Colombian Green

Most would not associate Colombia and tea, however we do have the advantage of having Elvira Cardenas as a tea taster – and she is a very good one. So, when she said someone in her country made good tea, we gave it a try.

Briskness-2 Body-2 Aroma-3

Available **Loose**

Colombian Black

Be the first person you know to drink tea from Columbia, rather than that other beverage. This is a rare black, light-bodied tea that has a subtle hint of honey in its brew.

Briskness-2 Body-2 Aroma-3

Available **Loose**

Guayusa

This is a traditional Ecuadorian beverage from the Amazon. Like Mate, it contains elevated levels of caffeine and many antioxidants.

Briskness-3 Body-1 Aroma-2

Available **Loose**

Yerba Mate

Yerba Mate has been a traditional source of caffeine in South America. With a grassy, vegetal flavor, this is a popular beverage with the gauchos (cowboys) of Argentina.

Briskness-4 Body-2 Aroma-2

Available **Loose**

Hawaiian Black Dragon

From up high on the Big Island, outside the town of Volcano, is the Ohana Tea Garden. This garden makes some of the best tea found in these 50 States. The tea plants came from the Wuyi Mountains in China. So the Oolong characteristics come out. Ronald and Lisa have enriched the volcanic soil, tended the plants and made each batch of tea by hand.

Briskness-2 Body-2 Aroma-3

Available **Loose**

Louisiana Big Easy Black

An old tea friend asked if we wanted to see her latest work for a tea garden in Louisiana. We said YES!! Beverly worked with the owner David and his assistant, Hans, on a new garden north of Lake Pontchartrain, and for their first effort, it is very impressive. We thought it was reminiscent of Anji Black, and that is no small feat.

Briskness-1 Body-2 Aroma-2

Available **Loose**

Yaupon Green

A unique Native American tea with vegetal notes. Harney & Sons sources sustainably-harvested, minimally-processed Yaupon Green leaf tea in Texas, from ranches that promote social justice.

Briskness-1 Body-2 Aroma-3

Available **Loose**

Celebrating where it all started

6 TEAS THAT SET THE STAGE FOR A GLORIOUS 40-YEAR LEGACY

It all started with six foundational teas that today, are still among our favorites—and yours. We invite you to make them the very bedrock of your tea-drinking journey, while adding others to your collection.

EARL GREY

This tea is perhaps the most famous tea in the world, originally inspired by the British Prime Minister, Earl Grey. There are as many different versions of Earl Grey as there are tea companies. Our popular blend uses tea from India and China, blended with natural oil of bergamot.

Briskness-1 Body-3 Aroma-3
Available **Loose** and in **Sachets**

ENGLISH BREAKFAST

There are many versions of English Breakfast tea. Ours has an ancient pedigree. Researchers have traced its heritage back to the black tea the English drank regularly in the 1800's. It is, simply, China Black 100% Keemun.

A simple way to start your hectic day!
Briskness-1 Body-3 Aroma-2
Available **Loose** and in **Tea Bags**

DARJEELING

High in the mountains, deep in the mists that surround the Himalayas is Darjeeling, "Queen of Teas." Our Darjeeling tea is a blend of First Flush and Autumnal teas from the best gardens. This mixture yields a light color in the cup and a fragrant nose. A great value.

Briskness-2 Body-2 Aroma-3
Available **Loose** and in **Sachets**

FORMOSA OOLONG

Formosa Oolong is the style of brown oolong that generations of Americans have loved, especially for its toasty flavor. Don't worry about the stems; the tea is traditionally made this way in Taiwan.

Briskness-1 Body-2 Aroma-2
Available **Loose** and in **Tea Bags**

ORGANIC GUNPOWDER

When John Harney started in the tea trade over 30 years ago, there were just two green tea offerings from China: Gunpowder and Chun Mee. Though our selection has expanded greatly since then, many people are very familiar with and enjoy Gunpowder's sharp, charred flavor.

Briskness-3 Body-3 Aroma-4
Available **Loose** and in **Sachets**

IRISH BREAKFAST

Our Irish Breakfast tea is 100% Assam, and like most traditional Irish blends, this is a great way to begin your morning. In contrast to other versions of Irish Breakfast tea, you could say ours is a little more sophisticated. It tastes great on its own or takes milk and sugar well.

Briskness-2 Body-4 Aroma-3
Available **Loose, Sachets,** and in **Tea Bags**



Decaffeinated is All About the Flavor

We've removed 99% of the caffeine from some favorite teas, but kept 100% of the flavor. This way, you can still enjoy many of your favorite brews without the stimulating effects of caffeine. Prefer 100% caffeine free? Consider our herbal tisanes and many of our wellness teas or fruit teas. Either way, they're something to smile about—simply delicious tea, morning, noon or night. Sip up!

LEAVE THE CAFFEINE BEHIND WITHOUT COMPROMISING TASTE

Decaf Apricot

The Apricot flavor you love, now in Decaf! Our Decaf Apricot is an elegant decaf black tea enhanced by the warm, almost nutty flavor of apricot. Delicious served hot or iced. Briskness-2 Body-2 Aroma-4 Available **Loose**

Decaf Assam

Try our Decaf Assam tea if you love the malty flavors of traditional Assam, yet want to reduce your caffeine consumption. It handles milk and sugar, and may also be enjoyed solo. Briskness-1 Body-2 Aroma-2 Available **Loose**

Decaf Hot Cinnamon Spice

A decaffeinated rendition of our best seller, with the same assertive flavors: three types of cinnamon, orange peel, and sweet cloves, with the decaf black tea base. Despite the allure, there is no sugar or added sweeteners. Enjoy it anytime! Briskness-1 Body-1 Aroma-5 Available **Loose** and in **Sachets**

Decaf Ceylon

Enjoy our quality black tea with the caffeine removed, yet the depth of flavor intact. Customers tell us our Ceylon is the only Decaf that tastes like "real tea." Briskness-1 Body-2 Aroma-2 Available **Loose**, in **Sachets** and in **Tea Bags**
*Also known as Decaffeinated Orange Pekoe.

Decaf Earl Grey

Would the world still turn without Earl Grey Tea? Many would doubt it. With this version of Earl Grey, you will not be up all night pondering such deep questions about the Earth spinning. Briskness-1 Body-2 Aroma-2 Available **Loose**, in **Sachets** and in **Tea Bags**

Midsummer's Peach

The best of peachy summer delights in a single blend. A tantalizingly delicious concoction of decaffeinated black tea and the juicy flavors of fresh peaches, Midsummer's Peach is fragrant and comforting. Equally suited as a light morning beverage or a relaxing cup in the evening. Briskness-2 Body-1 Aroma-4 Available **Loose** and in **Sachets**

Decaf Paris

Nighttime tea lovers can enjoy Decaf Paris, our alternative version of Paris, one of Harney & Sons' most popular and talked-about blends. Relax with the same great fruity flavors of vanilla, caramel, and bergamot with a decaf black tea base and still get a good night's sleep! Briskness-1 Body-1 Aroma-4 Available **Loose**

Decaf Peaches & Ginger

We made our popular black tea blend in a decaffeinated form! This tea combines the flavors of juicy peaches with ginger's zing. Briskness-2 Body-2 Aroma-4 Available **Loose**

Decaf Sencha

Are you looking for a plain green tea that has flavor and some body, yet without the caffeine? We propose our Decaf Sencha as your clear choice. Briskness-4 Body-2 Aroma-1 Available **Loose**

Vanilla Comoro

Vanilla Comoro is our popular decaffeinated version of Vanilla Black tea! Now you may enjoy our favorite vanilla dessert tea to your heart's content and still sleep soundly. Briskness-1 Body-1 Aroma-3 Available **Loose** and in **Sachets**

View more decaffeinated teas at:
harney.com/decaf



SPECIALTY & SEASONAL BLENDS

Elegant Tins of 20-30 Sachets

Banting & Best (Flavored Black)

Birthday Party (Decaf Flavored Black)

Cranberry Autumn (Flavored Black)

Father's Day (Flavored Black)

Holiday Tea (Flavored Black)

Jane's Garden (Flavored Green)

Little Women Orchard House Blend
(Flavored Green)

Love Life (Flavored Green)

Mother's Day (Caffeine-free Herbal)

New York Blend (Caffeine-free Herbal)

RMS Titanic Blend (Black)

**Shakespeare's Globe -
A Midsummer Night's Tea** (Flavored Black)

SoHo Blend (Flavored Black)

Tausug Blend (Flavored Green)

CLASSICS

Signature Tins of 20 Sachets

Collectable, upcyclable tins—and teas—that never go out of style

Chamomile (Caffeine Free Herbal)

Citron Green (Flavored Green)

Darjeeling (Black)

Dragon Pearl Jasmine (Jasmine)

Earl Grey Supreme (Flavored Black)

English Breakfast (Black)

Hot Cinnamon Spice (Flavored Black)

Japanese Sencha (Green Tea)

Paris (Flavored Black)

Peppermint Herbal (Caffeine Free Herbal)



TEA BAGS

Foil-Wrapped, Box of 50



Ceylon & India / Orange Pekoe (Black)

Chamomile (Caffeine-free Herbal)

Decaf Earl Grey (Decaf Flavored Black)

Decaffeinated (Ceylon) (Decaf Black)

English Breakfast (Black)

Hot Cinnamon Spice (Flavored Black)

Japanese Sencha (Green)

Jasmine (Flavored Green)

Lemon Herbal (Caffeine-free Herbal)

Paris (Flavored Black)

Organic Citron Green* (Flavored Green)

Organic Earl Grey Supreme* (Flavored Black)

Organic Green with Citrus & Ginkgo*
(Flavored Green)

Organic Peppermint* (Caffeine-free Herbal)

Raspberry Herbal (Caffeine-free Herbal)

* Certified USDA Organic.

HT BLENDS

Colorful Tins of 20 Sachets

A bright and beautiful presentation for especially flavorful teas. A great value!

African Autumn (Caffeine-free Herbal)

Black Cask Bourbon (Flavored Black)

Black Currant (Flavored Black)

Blueberry Green (Flavored Green)

Cherry Blossom (Flavored Green)

Chocolate Mint (Flavored Black)

Decaf Hot Cinnamon (Decaf Flavored Black)

English Breakfast (Black)

Organic Ginger Lemon (Caffeine-free Herbal)

Organic Ginger Tumeric (Caffeine-free Herbal)

Green Tea with Coconut (Flavored Green)

Hot Cinnamon Sunset (Flavored Black)

Indigo Punch (Caffeine-free Herbal)

Organic Plain Green (Green)

Peaches & Ginger (Flavored Black)

Peppermint Herbal (Caffeine-free Herbal)

Pomegranate Oolong (Flavored Oolong)

Pumpkin Spice (Caffeine-free Herbal)

Salted Caramel (Flavored Black)

Vanilla Comoro (Decaf Flavored Black)

Yellow & Blue (Caffeine-free Herbal)



HT TAGALONGS

African Autumn
(Caffeine-free Herbal, 5 Sachets)

Hot Cinnamon Sunset
(Flavored Black, 5 sachets)

Peach Ginger Twist
(Flavored Black, 5 sachets)

Vanilla Comoro
(Decaf Flavored Black, 5 Sachets)

Yellow & Blue
(Caffeine-free Herbal, 3 Sachets)

Stack of Five Tagalongs Gift



SIP & SHOP IN THE BIG CITY

Harney & Sons SoHo

You are warmly invited to visit us at our fashionable SoHo address in New York City. Savor teas from our selection of more than 250 varieties, enjoy tasty treats, take home gorgeous gifts for yourself and those you love. For opening times visit our website (harney.com/soho).

**433 Broome Street
New York, NY 10013
(212) 933-4853
soho@harneyteas.com**



SHOP, LUNCH, AND SMILE

Harney & Sons Millerton

Located in the scenic Hudson Valley, our tea shop and teabar offer 250 varieties of tea. Explore the world of tea, design unique gifts for friends and treat yourself to a delicious lunch. Check out our hours at harney.com/millerton

**13 Main Street
Millerton, NY 12546
(518) 789-2121
millerton@harneyteas.com**

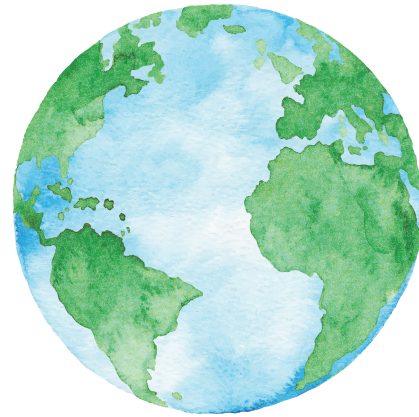
Thanks to you, our global footprint is a little lighter.

COLLECTIVE EFFORTS LEAD TO POSITIVE CHANGES.

In 2006, Michael and Paul Harney chose membership in 1% For The Planet as way to donate one percent of our total sales to the environmental organizations of our choice. It's our way of giving back to the world, as we gather ingredients and transport to many homes, hotels, restaurants, cafes, and cruise ships across the globe.



The Harney family and staff are very proud to be part of this fine global organization working toward protection of the environment 1% at a time. As of the start of 2023 Harney & Sons (with your help) will have **donated over 4 million dollars** to 1% for the Planet.



Through 1% for the Planet, we support the following organizations:

- | | | |
|-----------------------------------|-------------------------------|---|
| Climate Central | Thames 21 | National Wild Life Federation |
| Connecticut Farmland Trust | Plastic Pollution Coalition | Nature Conservancy |
| Cornell Botanic Gardens | Protect our Winters | New York Botanical Garden |
| Great Mountain Forest Corporation | Urban Ocean | Harlem Grown |
| Conservation International | Appalachian Trail Conservancy | Pacific Forest Trust |
| National Park Foundation | Cary Institute | Rainforest Trust |
| Dutchess Land Conservancy | Charity:Water | Scenic Hudson |
| Navdanya Trust | Columbia Land Conservancy | The Moon Over the Pond Educational Farm |
| Ocean Conservancy | Conservation International | Forest and Bird |
| Pacific Crest Trail Association | Friends of the Great Swamp | New York / New Jersey Trail Conference |
| Parks & Trails of New York | Housatonic Valley Association | |
| Land Trust Alliance | Live to Love | |



Through our partnership with Cloverly, we offer our customers the ability to offset the carbon footprint of each of their orders and their products. As we write this catalog, we have raised **\$74,443**. This is a drop in some very big oceans but with your help, we'll keep at it.

FALL IN LOVE WITH AN UPSTATE HOME

Elyse Harney Real Estate

Founded by Harney family matriarch, Elyse Harney Sr. and flourishing today with family members and broker/owners Elyse Harney Morris and Scott Morris, EHRE is a force in real estate in some of the country's most beautiful places. Elyse says, "in our family firm, friends become customers and customers become friends. See what we mean at [harneyrealestate.com](https://www.harneyrealestate.com)."





HARNEY.COM | CALL 1-888-HARNEY-T (1-888-427-6398) | VISIT US! 1 RAILROAD PLAZA, MILLERTON, NY & 433 BROOME STREET, SOHO, NYC

MORE REASONS TO SIP, SMILE, CELEBRATE

HAO YA 'A'

Delicious, high quality Keemun
 The last time I had a high quality Keemun, I got it directly in China from a fancy tea shop in the mountains, just where they grow it. I'd say this is on par for the quality, which is about the highest praise I can give a tea!

CAITLIN S.

NEW ENGLAND BREAKFAST

My favorite tea from Harney & Sons
 This is my new favorite cup in the morning. Strong maple flavors that don't need to be steeped long; mixes very well with milk and just a tiny bit of sugar. I think this one will be my tea of choice for a long time.

CASEY T.

LUNG CHING

So special every day
 I drink this tea every day because each time it tastes very special. I buy Lung Ching in the pound bag so I never am without and the flavor is always delicious even at the bottom of the bag.

SANDRA K.



BERRY YOUNG

Refreshing
 This tea has a light but strong flavor and refreshing quality. I highly recommend this tea to anyone looking for a healthy morning pick me up.

KOLTON S.

GARDEN PARTY

My new fave flavor!
 This is my new favorite tea. I've been drinking black tea mostly but this flavor combo snapped me right back to green. Doesn't taste fruity. Really delicious as iced tea as well.

LISA S.

FORMOSA OOLONG

Our everyday tea!
 We love Harney & Son's Formosa Oolong. Whether it's in place of morning coffee, an afternoon pick-me-up, or iced for a weekend refresher this is our everyday go to tea.

KAREN M.