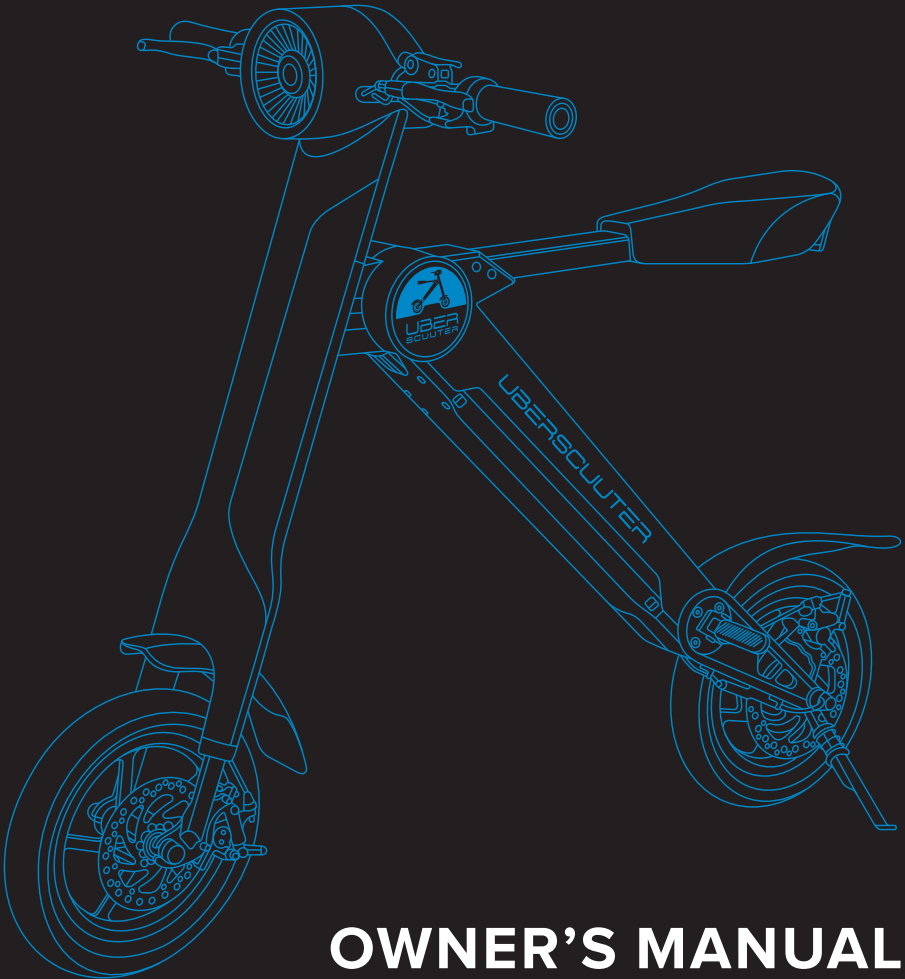


# UBER SCOOTER

PLUS



## OWNER'S MANUAL

Electric, Foldable & Portable Scooter Bike

# IMPORTANT!

This manual contains important safety, performance and maintenance instructions. Please read and understand the manual before operating your Uber Scouter.



## Updates to the Owner's Manual

Please check [uberscouter.com](https://uberscouter.com) periodically for important updates to the owner's manual.



## TABLE OF CONTENTS

<b>Part One</b>	<b>Before You Ride</b>	3
1.1	Safety Warnings	3
1.2	Safety Tips	3 - 4
1.3	Pre-Ride Checklist	4
1.4	Product Features	5
1.5	Product Specifications	5

<b>Part Two</b>	<b>Assembly &amp; Setup</b>	6
2.1	LCD Screen	6
2.2	Scooter Diagram	7
2.3	Instructions for Assembly	8 - 9

<b>Part Three</b>	<b>Product Operation</b>	9
3.1	Starting & Stopping	9 - 10
3.2	How to Fold	10 - 11
3.3	Smart Alarm	11
3.4	How to Charge	11
3.5	USB Port	12
3.6	Bluetooth Speaker	12
3.7	Start Speed Settings	12
3.8	Cruise Control	12
3.9	Switch KPH to MPH Settings	13
3.10	How to Remove Battery	13

<b>Part Four</b>	<b>Maintenance Tips</b>	14
2.1	Maintenance	14
2.2	Battery & Charger Use & Care	14

<b>Part Five</b>	<b>Warranty</b>	15
------------------	-----------------	----

## 1.1 Safety Warning



**GENERAL WARNING:** Riding the Uber Scouter can be a hazardous activity even under the best circumstances. Proper maintenance of the Uber Scouter is your responsibility and can help reduce risk of injury. Certain conditions may cause the equipment to fail without fault of the manufacturer. The electric scooter is intended to move and it is therefore possible to lose control, fall off and/or get into dangerous situations that no amount of care, instruction or expertise can eliminate. If such things occur you can be seriously injured or die, even when using safety equipment and other precautions. **RIDE AT YOUR OWN RISK AND ALWAYS USE COMMON SENSE.**

This manual contains many warnings and cautions concerning the consequences of failing to maintain, inspect or properly use your electric scooter. Because any incident can result in serious injury or even death, we do not repeat the warning of possible serious injury or death each time such a possibility is mentioned.

**YOUR SAFETY** is up to you when you are operating your Uber Scouter.



**WARNING:** The Uber Scouter is not a toy and not meant to be used by children. It is NOT child-proof.

Check and obey all local laws and regulations regarding helmet use and scooter operation in the locations where the electric scooter may be used.

## 1.2 Safety Tips

**YOUR SAFETY IS UP TO YOU** when you are operating your Uber Scouter. We list a few safety tips below to help you reduce the risk of injury, but it is not possible to list all.

- Always wear a helmet and other safety equipment and appropriate clothing and shoes.
- Check the condition of your Uber Scouter each time you're are going to ride it. Make sure all the components, including the tires are in good condition and working properly.
- Always maintain a hold on both handlebars while riding.
- Never allow more than one person at a time to ride the scooter.
- Do not exceed the weight limit of 264 lbs.
- Keep your fingers and other body parts away from wheels and all other moving components.

- Do not ride your scooter in rain, wet or icy weather and never immerse the scooter in water.
- Always avoid excess speed associated with downhill rides.
- Do not brake harshly.
- Only use authorized charger and parts.
- Do not allow hands, feet, hair or any other body parts to come in contact with moving parts while engine is running.
- Do not ride while using cell phone or other electronics while wearing headphones.
- Always be alert and ride defensively to help prevent accidents. Watch out for obstacles that could catch one of the scooter's wheels or force you to turn suddenly and/or lose control.
- Do not improperly disassemble or modify the Uber Scooter. The warranty will be voided.

### **1.3 Pre-Ride Checklist**

#### **Brake**

Check that the brakes are working properly. When you squeeze the lever, the brake should provide positive braking action.

#### **Frame, handlebars**

Check for cracks or broken connections.

#### **Tires**

To ensure safety, check the tread and tire pressure of both tires each time before riding. Make sure tire pressure is properly inflated to the manufacturer's recommended tire pressure.

#### **Hardware**

Check all parts such as nuts, bolts, cables, etc. to ensure they are secure and assembled correctly. If the unit is damaged, do not ride.

#### **Laws & Regulations**

Always check and obey any local laws or regulations regarding helmet use and scooter operation.

#### **Insurance**

Do not assume that your existing insurance provides coverage for use of this product. Check with your insurance company for information before riding.

#### **Proper Attire**

Always wear proper protective equipment such as an approved safety helmet with chin strap securely buckled. A long-sleeved shirt, long pants, and gloves are recommended. Never ride barefooted or in sandals, and keep shoelaces tied and out of the way of the wheels.

**YOUR SAFETY IS UP TO YOU** when you are operating your Uber Scooter.

## Welcome to the **Uber Scooter**

The Uber Scooter is one of the first electric, foldable scooters created to provide the best last mile solution for Urban Commuters. The foldable, innovative design and top-level technology makes it the perfect choice for urban living. Congratulations on your new Uber Scooter and we know you will enjoy the ride!

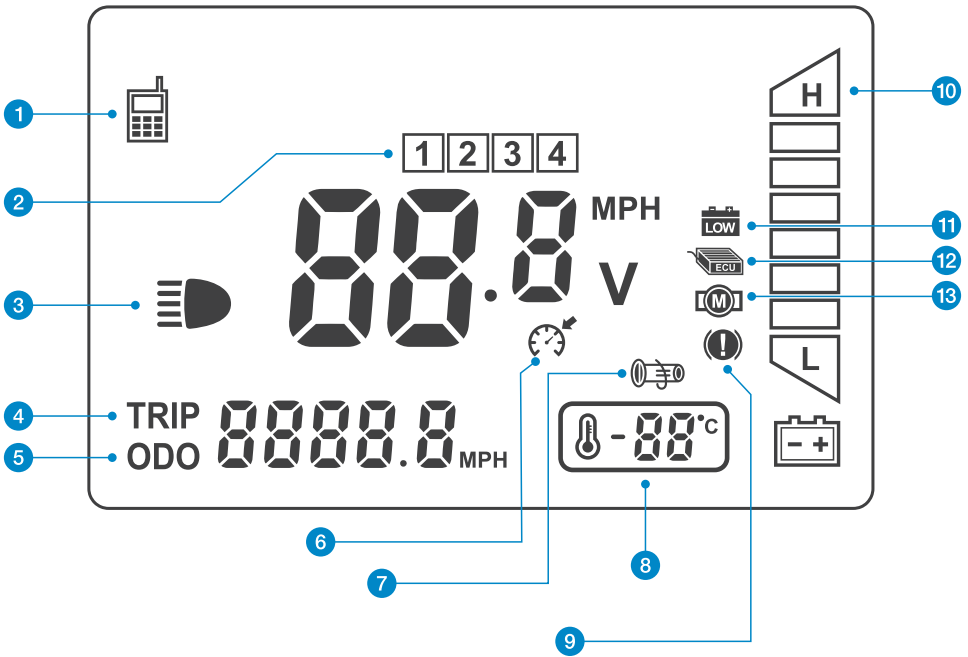
### 1.4 Product Features

1. USB Port
2. Bluetooth Speakers
3. LG Removable Battery
4. LED Headlight
5. Front and Rear Disc Brake
6. Memory Foam Seat
7. Military Grade Tires

### 1.5 Product Specifications

ITEM	SPECIFICATION
Unfold size	3.9ft x 2ft x 3.2ft
Fold size	4ft x 1.7ft x .88ft
Weight	39lbs
Max Load	264 lbs
Max Speed	15 mph
Range	21 – 27 mph
Charging time	3 – 5 hrs
Charge Voltage	100-240V 50/60 Hz
Battery capacity	8.8 AH
Battery type	lithium
Nominal voltage	48V
Rated power	350W
Motor type	Brushless gear motor
Motor rated torque	6.6N.M
Frame Material	Aluminum Alloy

## 2.1 LCD Screen



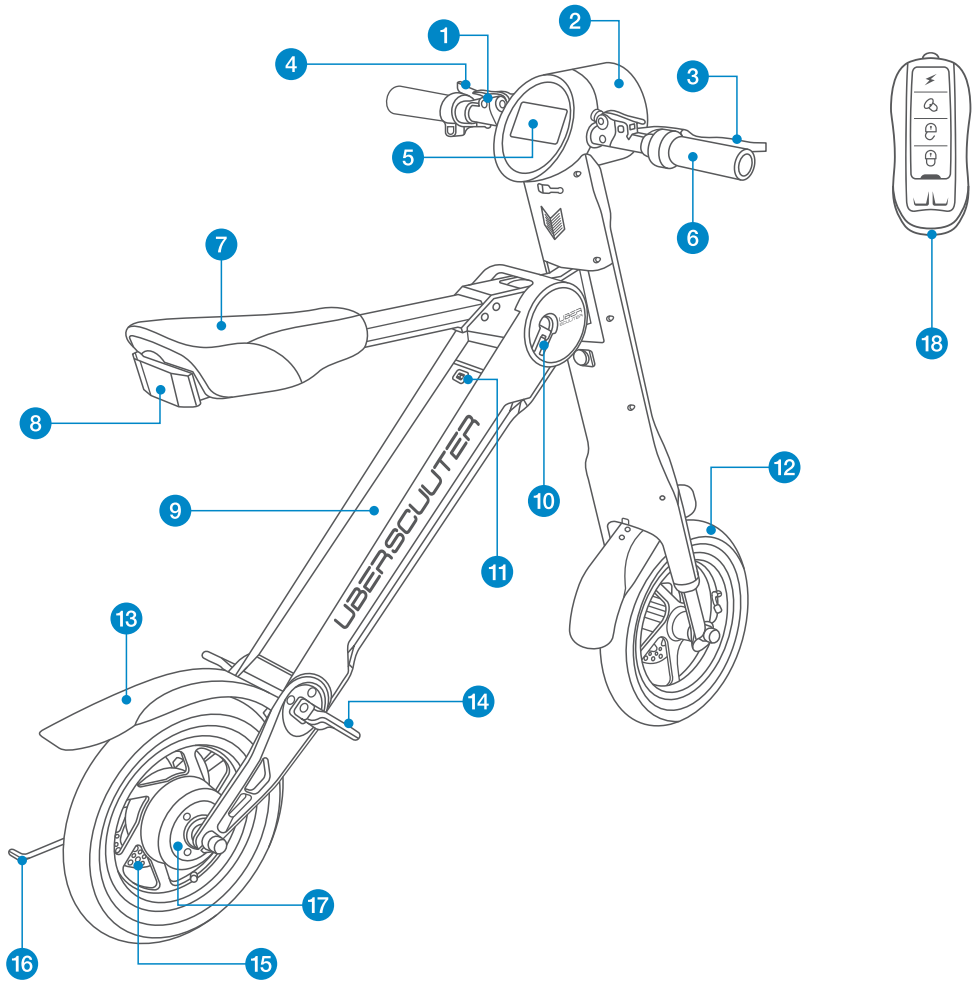
- |                               |                            |
|-------------------------------|----------------------------|
| 1. Cellphone charging display | 8. Temperature display     |
| 2. Start speed shift          | 9. Brake display           |
| 3. Headlight                  | 10. Battery display        |
| 4. Single trip mileage        | 11. Undervoltage reminder  |
| 5. Total trip mileage         | 12. Controller malfunction |
| 6. Cruise control             | 13. Motor malfunction      |
| 7. Grip Malfunction           |                            |



**Warning:** The undervoltage reminder, controller malfunction, motor malfunction, brake display or grip malfunction indicators will display when there is mechanical issues with the scooter. Please contact our customer service department to troubleshoot and resolve the issue before riding.

**NOTE:** The temperature displays a margin of error of +/- 8 deg F.

## 2.2 Scooter Diagram

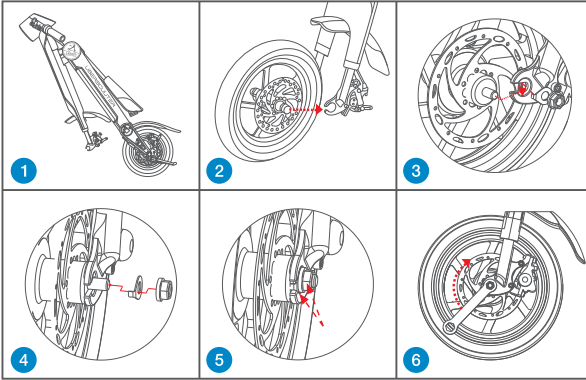


1. Foldable Handle Bar
2. LED Headlight
3. Front Brake
4. Rear Brake
5. LCD Screen
6. Throttle
7. Memory Foam Seat
8. Rear Reflector
9. LG Removable Battery
10. Foldable Lock
11. Power Switch
12. Military Grade Tires
13. Mud Guards
14. Foldable Foot Peg
15. Front & Rear Disc Brake
16. Kickstand
17. German Brusless Gear Motor
18. Wireless FOB Key
19. Charger Interface



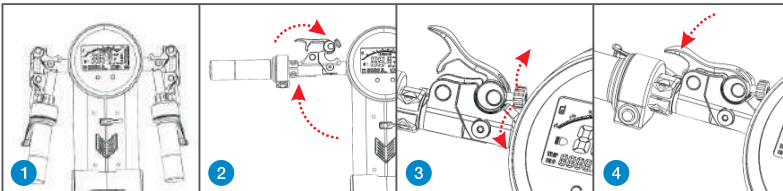
## 2.3 Instructions for Assembly

1. Remove all parts from the box and inspect for any damage that may have occurred during shipping. If anything is damaged, contact us immediately.
2. Attach the front tire with the included hex key wrench tool. Face the tire disc brake on the same side as the disc brake caliper.

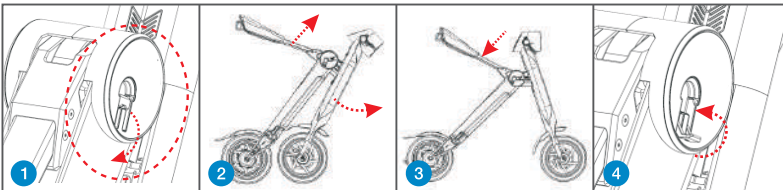


**Warning:** Be sure to securely tighten the bolt. If the bolt is not secure, the tire can come loose or fall off resulting in loss of control of scooter.

3. Follow the steps below to open and lock the handlebars in place.

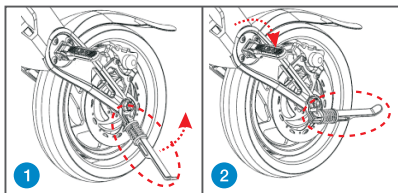


4. Stretch the handle bar and unfold the scooter (as shown).



1. Pull open the foldable lock in the direction shown.
2. Lift the saddle bar while holding a handle bar. The front leg should fold out naturally.
3. Press down on the seat.
4. Close the foldable lock in the direction shown to lock scooter in place.

5. Unfold the foot pegs and lift up the kickstand.

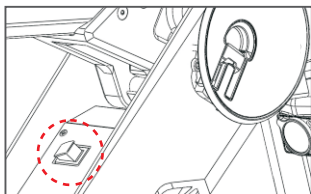


## Part Three Product Operation

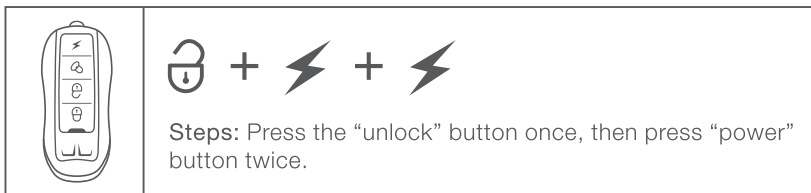
### 3.1 Starting & Stopping

#### Starting

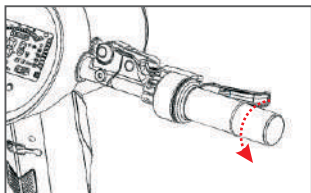
1. Please refer to the pre-ride checklist on page 4 before riding.
2. Sit on the scooter's seat and switch on the battery to the "ON" position.



3. Use the FOB key to unlock and start the power.



4. Slowly twist the throttle with your right hand keeping both hands on the handlebars to start moving.



## Stopping

1. Release the throttle and gradually apply the hand brake until scooter comes to a stop.



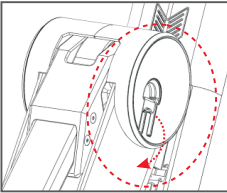
**Warning:** Stopping distances will vary depending on many factors including speed, tire conditions, ground you are riding on and your brake. Always familiarize yourself with stopping distance before riding in a busy location.



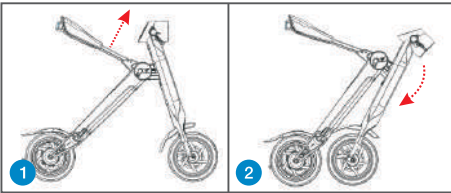
**Warning:** Use of this product may be a dangerous activity and may result in serious injury or death, even when used with proper safety precautions.

## 3.2 How to Fold

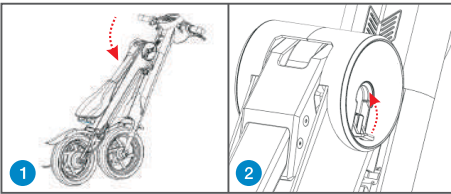
1. First pull open the foldable lock in the direction of the arrow.



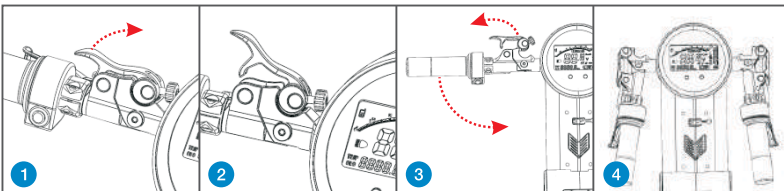
2. Lift the saddle bar and the front wheel will fold in naturally.



3. Press the saddle bar into the frame. The scooter is folded completely when you hear a click sound.



4. To fold the handlebars, flip up the switch and move switch out from arc clip. Press the handle bars downward.



5. Close the foldable lock to lock the scooter in the folding position. The scooter is now completely folded.



### 3.3 Smart Alarm

#### How to Set the Alarm

If the scooter is turned off, turn on the power switch and then press the lock key on the key FOB. The alarm is set when you hear the short sound of the horn.

If the scooter is already powered on, press the unlock key and then the lock key to turn on the alarm. The alarm will go off continuously for 15 seconds if the scooter is touched or started.

#### How to Cancel the Alarm

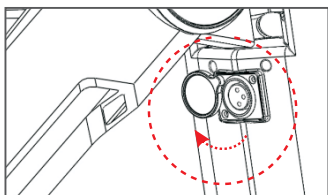
To exit the alarm, press the unlock key. The short sound of the horn will go off twice to indicate the scooter is unlocked and powered off.

#### How to Use the Alarm to Find the Scooter

Press the alarm bell on the key FOB. The alarm will go off 5 times to help indicate the location of the scooter. Press any key to exit the alarm.

### 3.4 How to Charge

1. Turn the battery dustproof cover by 90 degrees to see the charger interface.

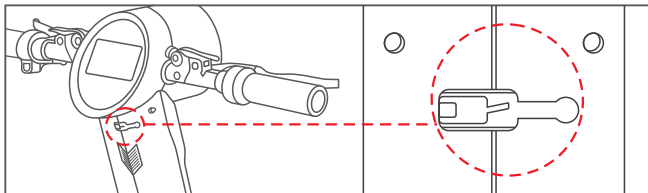


**Warning:** Use ONLY with the recommended charger. The charger supplied with the scooter should be regularly examined for damage to the cord, plug, enclosure and other parts. In the event of such damage, the electric motor bike must not be charged until it has been repaired or replaced.

2. Connect the charger to the scooter charger interface and power outlet. A red light will appear on the charger to indicate charger is connected and charging. If the scooter battery is fully charged, a green light will appear on the charger instead.
3. Standard charging time : 3-5 hours , Temperature : About 77 °F.
4. The charger is equipped with overcurrent protection and the charging current should be below 3A. Heavy current will damage the protector or shorten the battery's lifespan.

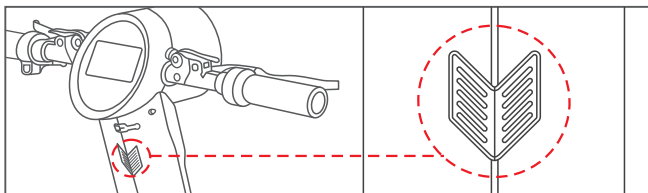
### 3.5 USB Port

1. The Uber Scooter is also equipped with a USB port to charge a phone or tablet on the go.




### 3.6 Bluetooth Speaker

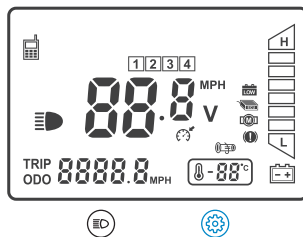
1. The Bluetooth speaker can be connected to iOS & Android devices. The Bluetooth speaker can work within a range of 26 ft.



### 3.7 Start Speed Settings




1. You can choose between 1,2,3,4 to adjust the start speed of the Uber Scooter depending on weight and road conditions. 1 is the lowest start speed while 4 is the fastest.

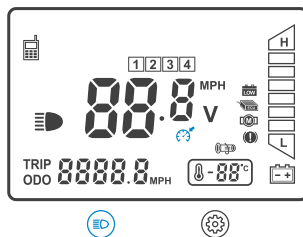
Press the button  to shift between 1,2,3,4 before riding to set the start speed level.



### 3.8 Cruise Control

Set the cruise control to keep the scooter moving at constant speed.

1. Turn on the Cruise Control: Start by long pressing the  button while riding at the speed you wish to set. The symbol  will appear on the LCD screen when cruise control has been set.
2. Turn off the Cruise Control: Rotate the throttle or press on the brakes or long press the  button to turn off cruise control.



### 3.9 Switch KPH to MPH Settings

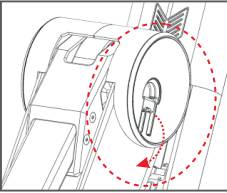
1. Press both the gear button & light button at the same time and hold down until you see a P01 on the screen.
2. Press the gear button once until you see a P02 on the screen.
3. Press the light button until you see the setting switch from km to mile. This will also switch from Celsius to Fahrenheit.
4. Press both the gear button and light button at the same time again until you are at the main screen.



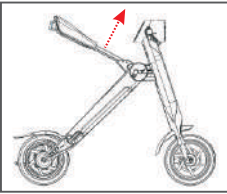
**CAUTION:** Please ensure only the P02 settings are changed by following the directions above. Incorrectly changing any other P settings could make the scooter inoperable unless set back to original factory settings.

### 3.10 How to Remove Battery

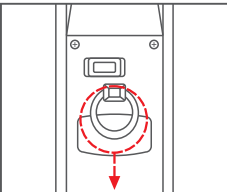
1. First pull open the foldable clip in the direction of the arrow.



2. Lift the saddle bar up.



3. Pull the metal ring forward to now remove the battery.



## 4.1 Maintenance

1. Please make sure the tire pressure is 40 psi or properly inflated to the manufacturer's recommended tire pressure.
2. Fully charge the battery before storing the scooter. Fully charge and discharge battery every two months if the scooter will be unused for a long period of time.
3. Form a good habit to charge battery every day in order to guarantee longer battery life.
4. Check if screws of front and back wheels are locked firm.
5. Do not wash or spray down using water hose in order to avoid damaging inner parts of circuitry.
6. Use neutral cleaner to wipe the scooter surface softly then wipe with dry with clean cloth.
7. Do not inject oil on disc, brake or rim.

## 4.2 Battery & Charger Use & Care

### Battery

1. Keep away from fire and flammable, explosive and corrosive gas.
2. Do not dismount the battery arbitrarily in order to avoid damaging inner parts.
3. Do not damage the label on the battery to avoid losing manufacturer warranty.
4. Use only the manufacturer's battery which can be purchased from [uberscooter.com](http://uberscooter.com).

### Charger

1. Use ONLY with the recommended charger. The charger supplied with the scooter should be regularly examined for damage to the cord, plug, enclosure and other parts. In the event of such damage, the electric scooter must not be charged until it has been repaired or replaced.
2. Charge battery fully before initially use.
3. The charger contains high-voltage circuit, don't dismount arbitrarily.
4. Use the charger in a dry & ventilated environment.
5. Do not operate charger near flammable materials.
6. Unplug charger and disconnect from scooter when not in use.
7. Always disconnect scooter from the charger prior to wiping down and cleaning your scooter with liquid.
8. Charge in safe place where children can't reach.

## Uber Scooter Limited Warranty

The manufacturer warrants this product to be free of manufacturing defects for a period of two years from date of purchase. This Limited Warranty does not cover normal wear and tear, tires, tubes or cables, or any damage, failure or loss caused by improper assembly, maintenance, or storage or use of the Uber Scooter. The Limited Warranty will be void if the product is ever modified in any way.

The manufacturer is not liable for incidental or consequential loss or damage due directly or indirectly to the use of this product.

### Need Help?

Contact our Customer Service Team at 248-216-1351 or email us at [info@uberscooter.com](mailto:info@uberscooter.com)



