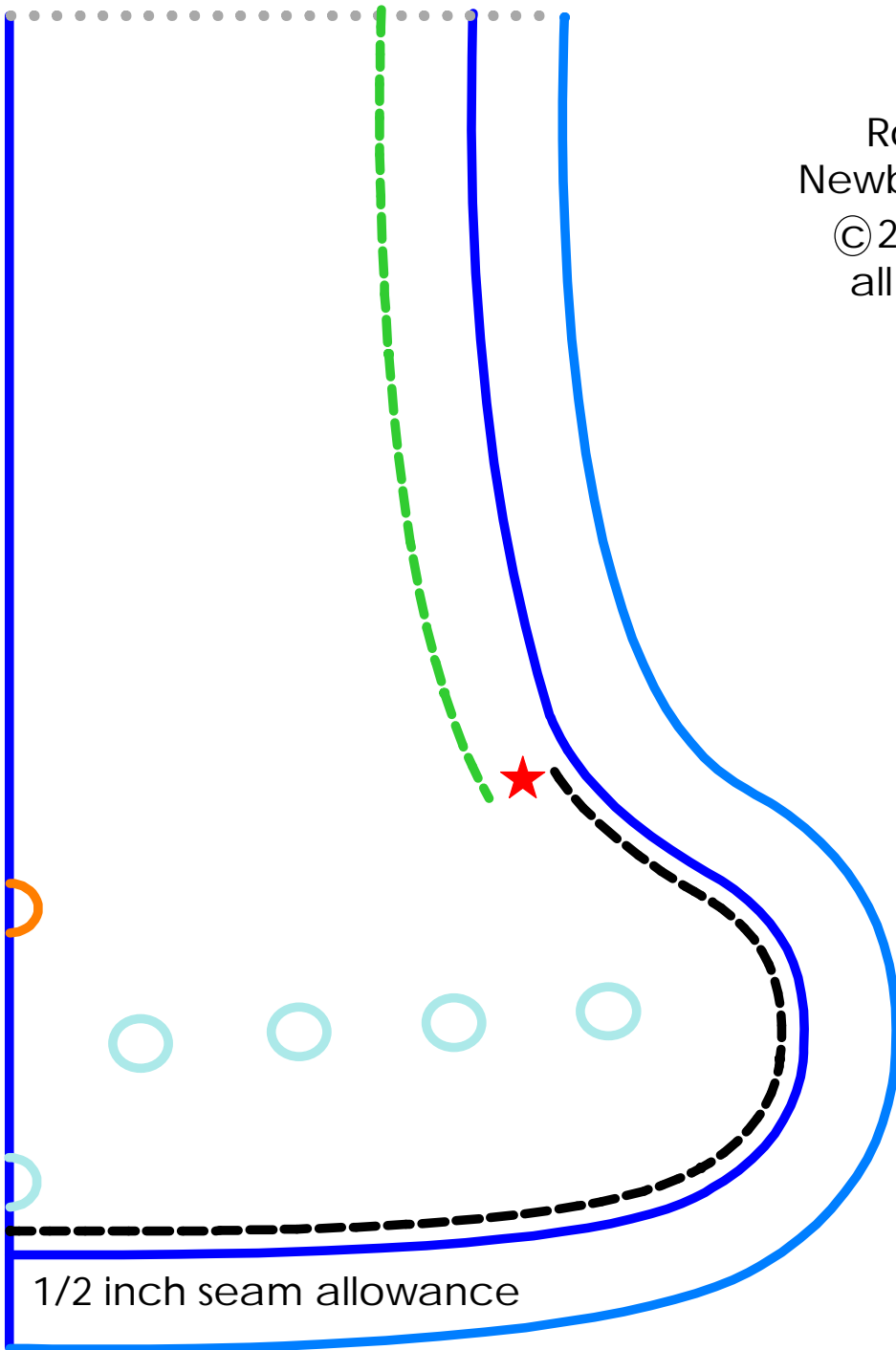


Legend

cut line turned version	
serge/sewing line	
stitch down/casing line	
top-stitch line	
socket	
stud	
elastic point	

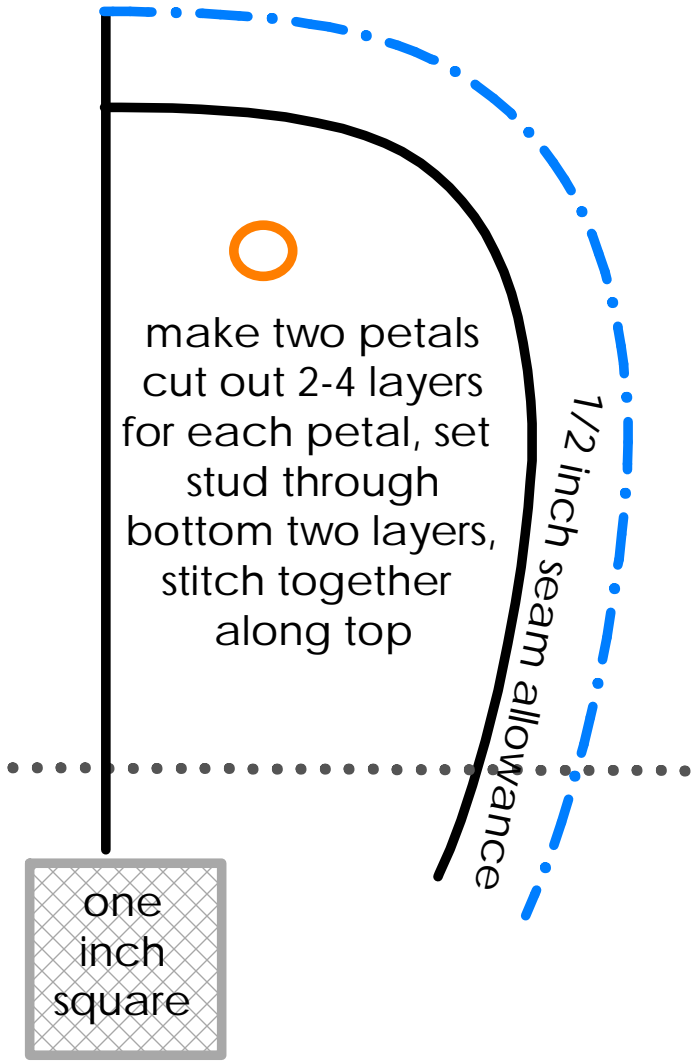
Rocket Bottoms
 Newborn Fitted Diaper
 ©2012 Krista Tracy
 all rights reserved







Legend

cut line turned version	
serge/sewing line	
stitch down/casing line	
top-stitch line	
socket	
stud	
elastic point	

Rocket Bottoms
 Newborn Fitted Diaper
 c 2012 Krista Tracy
 all rights reserved



Legend

- cut line turned version 
- serge/sewing line 
- top-stitch line 
- stud 

The legend is enclosed in a black rectangular box and defines the symbols used in the diagrams: a dashed blue line for the cut line turned version, a solid black line for the serge/sewing line, a dashed black line for the top-stitch line, and an orange circle for the stud.

