



How to Install the 2-piece Strawberry Snaps Using a Hand Press

By: kimmysnabric.com

Materials Needed:

- ♥ KAM Hand Press
- ♥ Leather Hole Punch or Awl
- ♥ 1 Green piece Strawberry Cap
- ♥ 1 Red Berry Cap
- ♥ 1 Plain Size 20 Cap
- ♥ 1 Snap Socket
- ♥ 1 Snap Stud
- ♥ The item you are putting a snap on.



Stud



Socket



1 Cap



1-Red Berry & 1-Green Piece



Size 20
Base

The great thing about a hand press is you don't have to change top dies to install snaps. The top piece will install both the stud and socket ends.

With the Strawberry Cap, you will need both the Size 20 Base and the Strawberry Base.



Strawberry Base

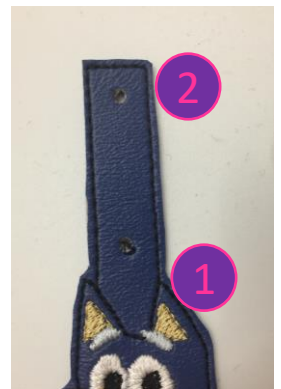


Punch holes where you wish the prong (sharp point) of the cap to be inserted.

Tools you can use to make a hole :

- A. Leather Hole Punch
- B. Crop-a-dile
- C. Awl

You will need 2 holes one for the cap and socket, and the other for cap and stud.



Applying the Stud & Socket



Insert the plain cap prong in through the hole you created in your project.



Add the stud or socket piece over the sharp point of the prong.



Slide the Snap and project into the hand press carefully, keeping the pieces together and straight.



Make sure the cap is seated into the black cap base well.



Make sure the stud or socket is lined up well with the top die.



Press down on the handle the upper die should squash down on the material. You should see a slight bulge in the rubber of the die.



The center is pressed evenly .



Now you will need to change the base for the Strawberry Cap.



You will need the small flat-head screwdriver that comes with the K-001 hand press



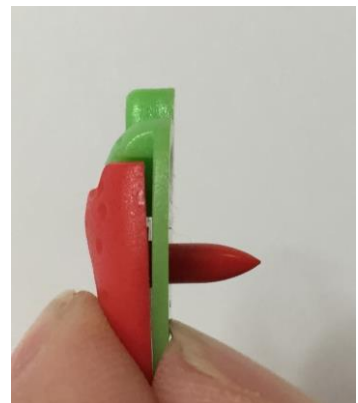
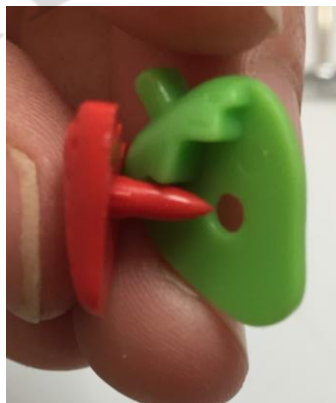
Loosen the screw only until the base will slip out (Do NOT remove the screw).



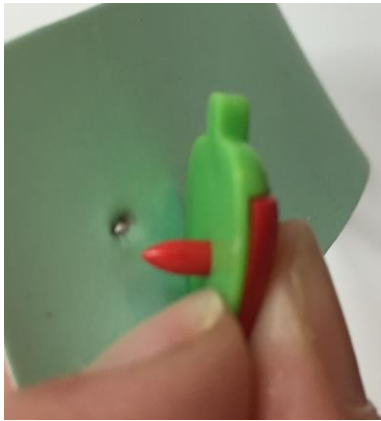
Remove the size 20 base and set in the strawberry cap base.



Tighten the screw just enough to hold the base in, do not over tighten.

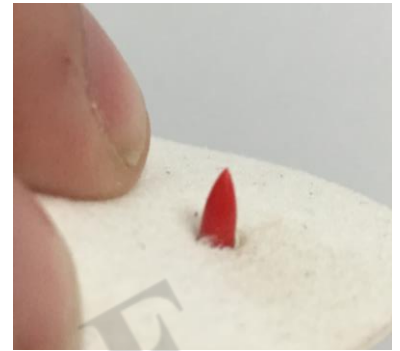


Take the red and green pieces and insert the prong of the red berry through the hole in the green piece. This will be the top cap.



Insert the cap prong in through the second hole you created in your project.

Top of Project



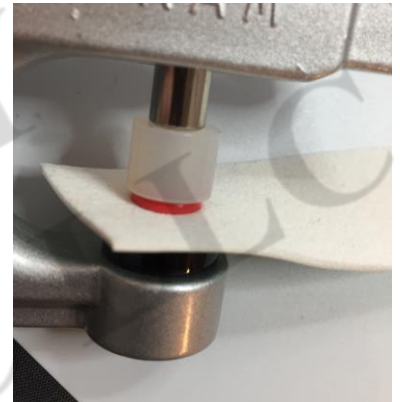
Bottom of Project



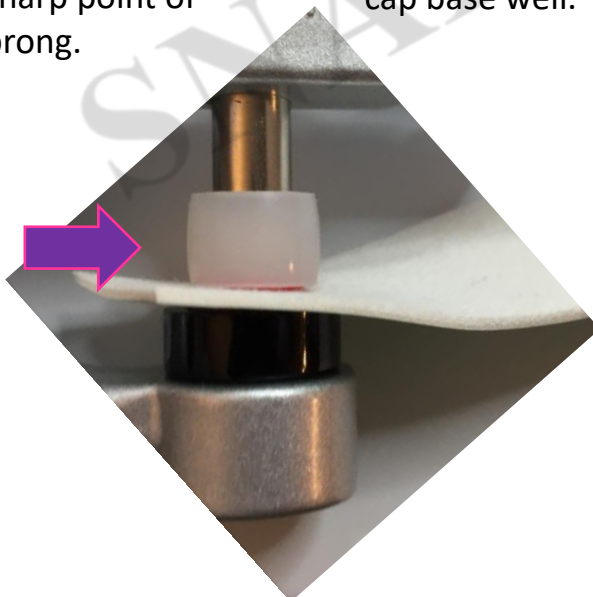
Add the stud or socket piece over the sharp point of the prong.



Make sure the cap is seated into the black cap base well.



Make sure the stud or socket is lined up well with the top die



Press down on the handle the upper die should squash down on the material. You should see a slight bulge in the rubber of the die. Release the handle and examine your project.

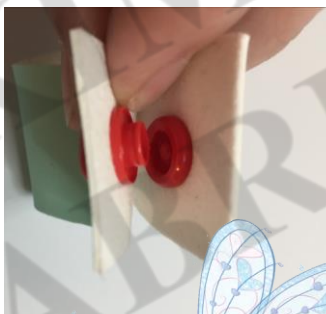
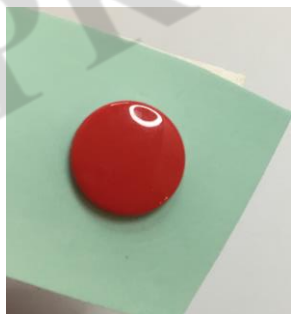
Congratulations!
You have placed a
Strawberry snaps!

Make it Snap!

Front of Project

Back of Project

Notice the centers of both
stud and socket are equally
pressed down. This means
you have done well!



Kimmy Snabric, LLC
P.O. Box 738
Fate, TX 75132
Pick-up Location: Greenville, TX
www.KimmySnabric.com



@KimmySnabric

We love to see your
projects!
Follow us on Facebook
(www.facebook.com/groups/kimmysnabric)

