



# How to Install KAM Snaps Using a Table Press

By: kimmysnabric.com



## Materials Needed:

- ♥ KAM Table Press
- ♥ Set of Dies KAM Snaps
- ♥ Leather Hole Punch
- ♥ 2 Snap Caps
- ♥ 1 Snap Socket
- ♥ 1 Snap Stud
- ♥ The item you are putting a snap on.

## Dies

Top piece for Stud



Top piece for Socket



Base piece for Caps





Set up your table press:

- ♥ The Cap Die Base inserts into the bottom hole.
- ♥ Choose which top die you want to use first and twist it into the upper hole



Punch holes where you wish the prong (sharp point) of the cap to be inserted.

Tools you can use to make a hole :  
Leather Hole Punch  
Crop-a-dile  
Awe



You will need 2 holes one for the cap and socket, and the other for cap and stud

## Standard vs. Long Prong



Standard



Long

**Standard prong 5.6mm** (sharp point) snaps are typically universal and can be used with most materials.

**Long Prong 6.2mm** (sharp point) snaps are slightly longer than standard prong, which makes these ideal for key fobs or other items made with 2 or more layers of vinyl or leather.

# Applying the Socket



Press the socket into the die, it should press into the die and be flat feeling.

Twist the die into the top of the table press.

Insert the cap into the hole you made in the project you are adding the snap to.



The prong should stick out the back of your project.



Insert the cap and material into the press, make sure the cap sits evenly in the groove of the press base die.



Press down on the handle the upper die should squash down on the material. You should see a slight bulge in the rubber of the die.



Remove from press. The inner portion should be equally pressed down.

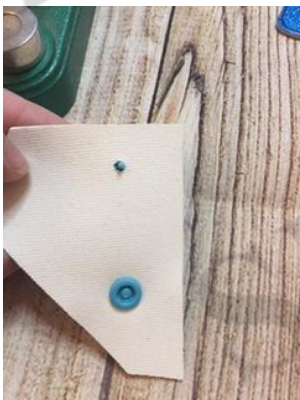


# Applying the Stud



Press the stud into the die, it should press into the die and be flat feeling. Twist the die into the top of the table press.

Insert the cap into the second hole you made in the project you are adding the snap to.



The prong should stick out the back of your project.

Insert the cap and material into the press, make sure the cap sits evenly in the groove of the press base die.

Press down on the handle the upper die should squash down on the material. You should see a slight bulge in the rubber of the die.

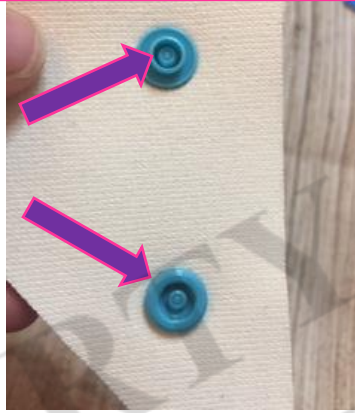
Remove from press. The inner portion should be equally pressed down.

# Make it Snap!

Front of Project



Back of Project



Notice the centers of both stud and socket are equally pressed down. This means you have done well!



Kimmy Snabric, LLC

P.O. Box 738

Fate, TX 75132

Pick-up Location: Greenville, TX

[www.KimmySnabric.com](http://www.KimmySnabric.com)



We love to see your projects!  
Follow us on Facebook  
([facebook.com/groups/kimmysnabric](https://facebook.com/groups/kimmysnabric))