

New Beginnings

A Marie Bostwick & Studio 180 Design Collaboration



New Beginnings

Companion Pattern
for the Tucker Trimmer III tool

Quilt Designed by Deb Tucker, Studio 180 Design

Recommended Tool: [Tucker Trimmer® III](#)

Project Size: 51" x 51"

Continuing the wonderful tradition of collaboration between Deb Tucker and Marie Bostwick, we're pleased to share with you our newest pattern, *New Beginnings*. In her novel, *Just in Time*, Marie tells the story of Grace Saunders, a woman who vowed to take her beloved husband for better or worse. Now she's coming to terms with difficult choices as she crafts a memory quilt from scraps of their life together—a life torn to shreds by an accident that has left him in a coma.

To make your own version of Grace's memory quilt you will need to find a variety of dark and medium scraps along with that perfect center square fabric that has lots of meaning to you just like Grace's does. Or you can make your quilt using Island Batik's [All A Flutter](#) collection of fabrics, as we did with our alternate quilt project. We can't wait to see how your New Beginnings quilt comes to life!

Fabric Requirements

Based on 40" of usable fabric with few cutting errors.

Fabric	Yardage
Assorted Mediums and Darks	1 pack of 40 – 10" squares
Background	1¼ yards
Light Blue	⅛ yard
Turquoise Corner Stones	⅜ yard
Dark Setting triangles and Binding	1½ yards
Backing	3½ yards

Cutting Instructions

Unit	Fabric	Cutting
Center Star Combination units	Background	1 – 10" square
	Medium	1 – 10" square
	Dark	2 – 10" squares cut in half once diagonally.
Center Square	Background	1 – 8½" square
Friendship Stars	Background	16 – 3½" x 6" rectangles
	Light Blue (or 4 Med/Dark 10" squares)	20 – 3" squares
Delectable Mountain Large Half Square Triangles	Darks	4 – 10" squares cut in half once diagonally.
	Mediums	4 – 10" squares cut in half once diagonally.
Delectable Mountain Small Half Square Triangles	Background	24 – 4" squares
	Mediums/Darks	24 – 4" squares
Delectable Mountain plain squares	Background	8 – 3½" squares
Outer Corner Stones	Turquoise	4 – 9" squares
Setting Triangles	Dark	1 – 19" square, cut twice on both diagonals.
	Dark	4 – 9½" square, cut once diagonally.
Binding	Dark	Cut 2¼" strips by preferred method and piece to make 224" of binding.

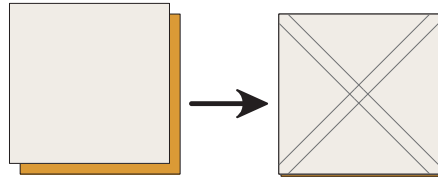
Quilt Construction

Center Star Combination Units – Make 4

Step 1 – Place the background 10” square right sides together with the medium 10” square and align the raw edges. These will become your smaller, quarter square triangles. Press them together with a bit of steam to help hold them in place or add several pins.

Step 2 – Position the pair for marking so that the background fabric is on the top.

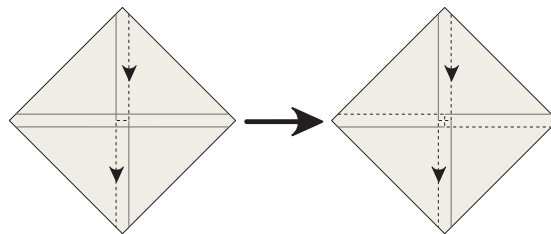
Step 3 – Mark four diagonal lines that are $\frac{1}{4}$ ” on either side of the true diagonals.



Steps 1–3 - Layer, Position, and Mark

Step 4 – Place the pair of squares under your sewing machine needle so that you will be stitching down the marked line on the right first. Stitch down the right side to the middle, cross over at the halfway point, then continue stitching down the left side.

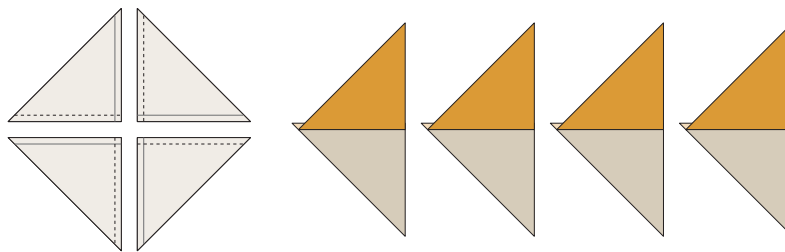
Step 5 – Rotate the pair of squares and repeat the same stitching sequence on the other set of marked diagonals. Stitch down the right side first, cross over at the half way point, then stitch down the left side. Just say to yourself - “Right, Cross, Left - Right, Cross, Left”.



Steps 4 & 5 - Stitch, Rotate and Stitch Again

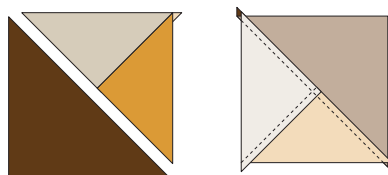
Step 6 – Cut the squares in half on both diagonals. Cut directly from corner to corner.

Step 7 – Press seams in either direction using care not to distort the long bias edge.



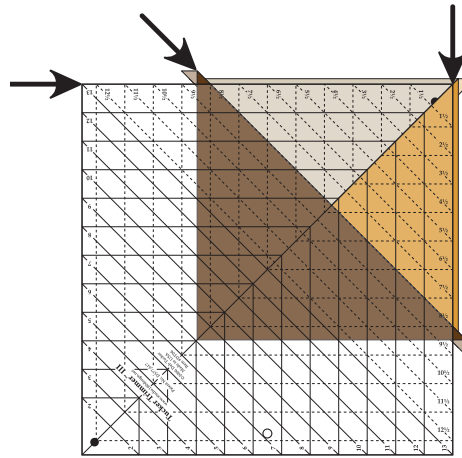
Steps 6 & 7 - Cut and Press

Step 8 – Center the pieced triangle section right sides together with the dark un-pieced triangle aligning long bias edges. Stitch with a $\frac{1}{4}$ ” seam. Be careful not to pull or distort this bias edge. Press your seams toward the large, half square triangle.



Step 8 - Stitch

Step 9 – Position [Tucker Trimmer® III](#) over the unit, carefully aligning both the Common and Sizing Diagonals with the sewn seams and trim to 8½". We like to trim the quarter square triangle corner first, then rotate 180 degrees and align the diagonals and cut size lines with the previously trimmed edges and trim again.

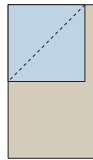


Step 9 - Trim to size

Friendship Stars – Make 4

Step 10 – **Mark** a diagonal line from corner to corner on 16 of the light blue 3" squares.

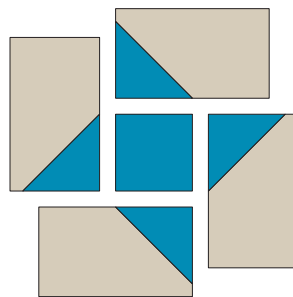
Step 11 – **Position** the background 3½" x 6" rectangle vertically, lay one small square in the upper left hand corner, with the drawn line going from the side to the top of the rectangle. **Stitch** on the line from corner to corner.



Steps 11 & 12 - Position, Stitch, and Trim

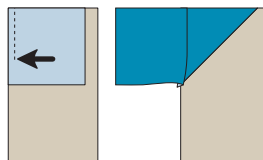
Step 12 – Trim away the excess fabric from the corner ¼" away from the stitching line. **Press** the triangle to fill the corner. Repeat until you have made 16 units.

Step 13 – Arrange four units and a 3" light blue center square as shown in the illustration. You will need to sew a partial seam for attaching the first rectangle unit to the square. Don't let this scare you away! It's not hard at all.



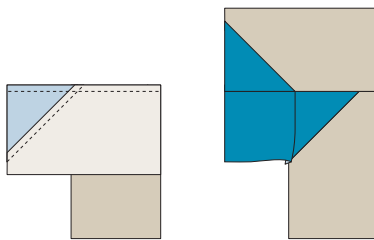
Step 13 - Arrange

Step 14 – Position the first rectangle unit right sides together with the center square and stitch about 1¼" to 1½" from the end. I back tack to hold the piece in place. Press the seam away from the center square.



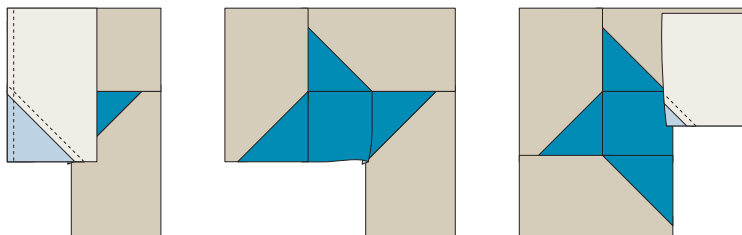
Step 14 - Position, Stitch and Press

Step 15 – Position the second rectangle unit on top of the partially pieced section and stitch from raw edge to raw edge. Again press the seam away from the center square.



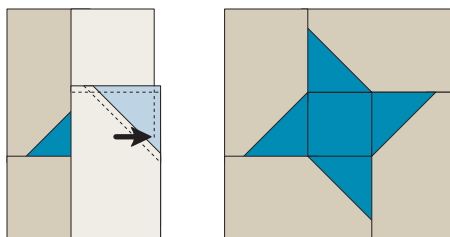
Step 15 - Position, Stitch and Press Second Units

Step 16 – Continue adding the third and fourth rectangle unit in the same manner, always **press** the seams away from the center square.



Step 16 - Position, Stitch and Press Third and Fourth Units

Step 17 – Complete the block by reinserting the needle at the end of the Step 6 line of stitching and sew to the raw edge of the block.

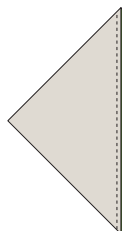


Step 17 - Complete Partial Seam

Step 18 – Trim the block to 8 ½”.

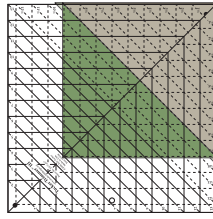
Delectable Mountain Make 8

Step 19 – Using the Large Half Square Triangle Pieces, pair a dark triangle with a medium triangle. Align the edges of the pieces, and stitch with a ¼” seam along the long edge of the triangles to make a half square triangle unit.



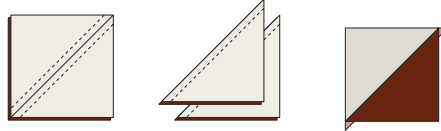
Step 20 – Press the seam toward the dark fabric.

Step 21 – Trim the units to 9½” using the [Tucker Trimmer® III](#). Note that right handed quilter will trim up the right side and across the top while the left handed quilter will trim up the left side and across the top.



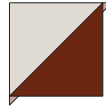
Step 22 – Use the 4” Small Half Square Triangle squares and position one dark/medium square with one background square right sides together. Mark two stitching lines ¼” on either side of a center diagonal line. I use my Quilter’s Magic Wand for this task. Do this for all the small squares.

Step 23 – Stitch on the lines, then cut down the middle. Press seams toward the dark fabric.



Step 23 - Stitch, Cut and Press

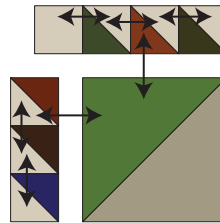
Step 24 – Trim the units to 3½” using the [Tucker Trimmer® III](#).



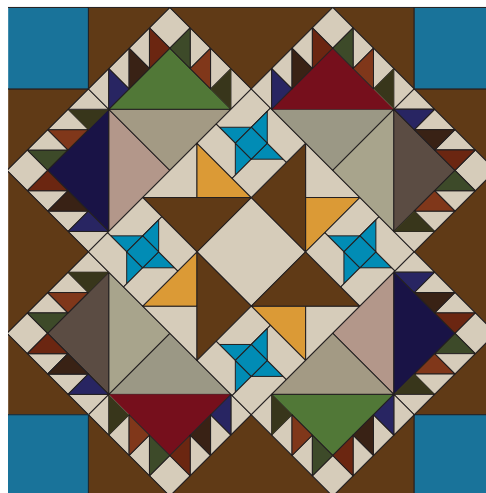
Step 24 - Trim

Step 25 – Rotate the unit and line up the [Tucker Trimmer® III](#) again. This time be sure to position the sizing diagonal and the 3½” cleanup. Trim the two remaining sides to create a precise square unit.

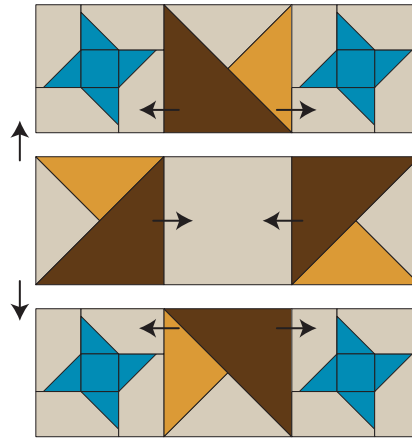
Step 26 – **Layout and Piece** together the large half square triangles, small half square triangles and 3½” background square to create your Delectable Mountain blocks. Press all seams open, as indicated in the diagram.



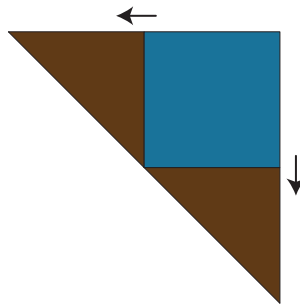
Steps 27 – Use the quilt layout diagram arrange all of your blocks and setting pieces as shown.



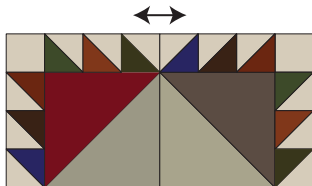
Step 28 – Stitch together the Friendship Star blocks, large combination units, and background center square to create your center block. Press as indicated.



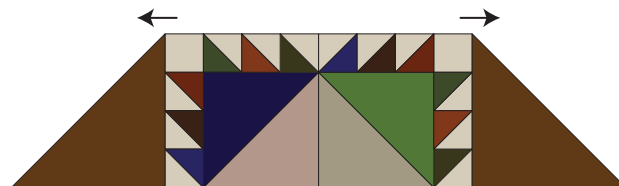
Step 29 – To create the corner triangles you will need a 9" turquoise corner square and two dark setting triangles cut from the 9½" squares. Align the 90° corner of one of the triangles with a corner of the square. Stitch down one short side of the triangle. Press toward the setting triangle. Stitch the other triangle on to the adjacent side and again press toward the triangle. These are exact so be careful!



Step 30 – Stitch the Delectable Mountain blocks together as shown, and press the seams open. On two of the pieced Delectable mountain sections add a dark setting triangle cut from the 19½" square to each end of the piece to create the below section.

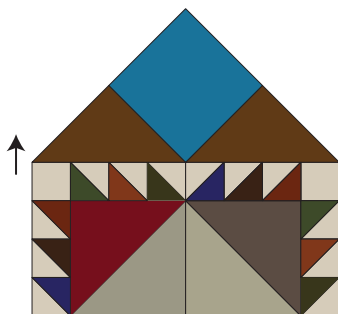


Make 2

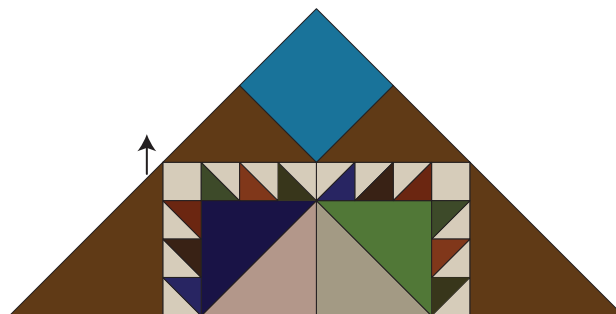


Make 2

Step 31 – Stitch the corner section from step 29 to the Delectable Mountain pieces from step 30 as shown in the diagram.



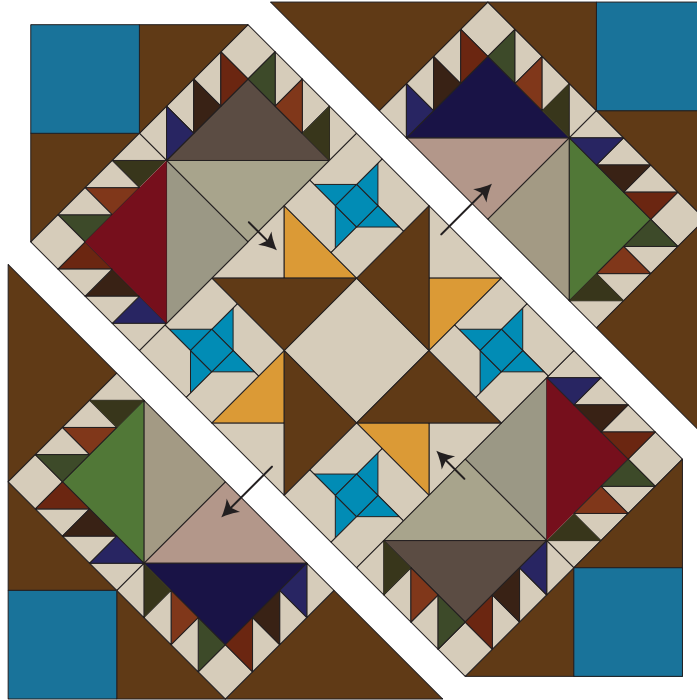
Make 2



Make 2

Step 32 – Assemble the quilt top by stitching the two Delectable Mountain sections that don't have the dark setting triangles on them to the center block from step 28. Press toward the Delectable Mountain section.

Step 33 – Stitch the remaining two Delectable Mountain Sections onto the quilt center. Press toward the Delectable mountain sections again.



Step 34 – Trim the edges of the quilt so that they are $\frac{1}{4}$ " beyond the seam intersections.

Step 35 – Finish with Batting, Backing, Quilting, and Binding! Layer quilt top with batting and backing. Baste and quilt. Bind and enjoy your beautiful New Beginnings quilt!

We hope you have enjoyed making your own version of *New Beginnings*. To see other tools and patterns designed by Deb Tucker and the Studio 180 Design team, please visit our website: Studio180Design.net
And consider posting a photo of your quilt on our Gallery page!