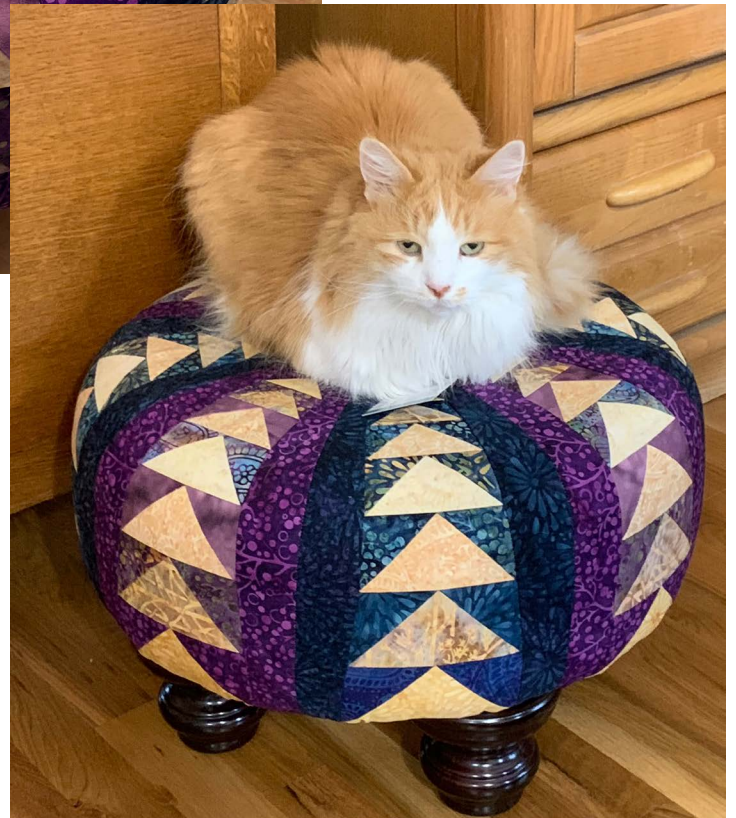


# Geese Galore Tuffet

A Tuffet Source & Studio 180 Design Collaboration



# Geese Galore Tuffet

Companion Pattern for the Studio 180 Design's Wing Clipper I, and Wing Clipper II tools, and The Tuffet Source Pieced 18" Tuffed Fabric Foundation with Instructions (FFP100) and a Tuffet Finishing Kit with Feet

Project Designed by Deb Tucker, Studio 180 Design  
Recommended Tools: [Wing Clipper® I](#) and [Wing Clipper® II](#), and [The Tuffet Source Pieced 18" Tuffed Fabric Foundation with Instructions \(FFP100\)](#) and a [Tuffet Finishing Kit with Feet](#)  
Project Size: 18" diameter

Aren't Tuffets fantastic!? I've wanted to make one for quite awhile, but I just hadn't found the right fabric to make my idea a reality. However, when I paired up with Island Batik to launch my first Signature Collection, Twilight Chic, by Kathy Engle, I knew it was the perfect opportunity to make one!

I teamed up with Sharyn of The Tuffet Source to make this collaborative project. We started the process by constructing Flying Geese units using both the Wing Clipper® I and II Studio 180 tools, allowing for a smooth progression from one size Flying Goose to the next. For the fabrics, we selected five blues, five purples and five light golds which allowed us to showcase most of the fabrics in in the line. Sharyn then took the units and pieced them into our amazing Tuffet using her fabric foundation and vast tuffet-building experience.

Below we've listed the yardage and outlined the basic construction steps for the Flying Geese units, and Sharyn shared her construction steps and hints as well. All you have to do is find the time to make it happen, and you can make a fantastic Geese Galore tuffet of your very own!

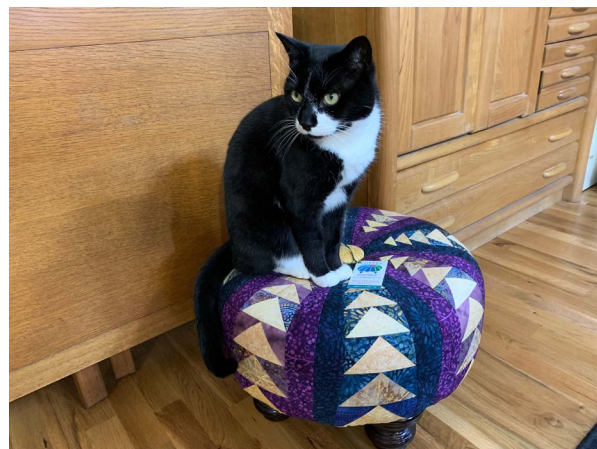
You know.....we've heard through the grapevine, that of all the Tuffets, this particular one is "Mr Tuffet's" favorite. We know it's Blaze and Ginger's favorite at our house.

## Fabric Requirements

Based on 40" of usable fabric with few cutting errors.

| Fabric                | Yardage                 |
|-----------------------|-------------------------|
| Blue 2, 3, 4, & 5     | 1/8 yard of each fabric |
| Purple 1, 3, 4, & 5   | 1/8 yard of each fabric |
| Blue 1                | 3/4 yard                |
| Purple 2              | 3/4 yard                |
| Light 1, 2, 3, 4, & 5 | 1/4 yard of each fabric |
| Tuffet Bottom         | 1 fat quarter           |

We made a set of four blue Flying Geese and a set of four purple Flying Geese for each size. This allowed us to make four blue panels and four purple panels. Each set of Flying Geese uses one large light square and four small dark squares. In the chart on the next page, you'll want to be sure when you cut your small dark squares that you cut four blue and four purple for each size.



## Cutting Instructions

| Flying Geese Finished Size | Flying Geese Cut Size | Starting Large Square   | Light Fabric Color # | Starting Small Squares - Dark Fabrics - Cut 4 Blue and 4 Purple for Each Size | Dark Fabric Color # |
|----------------------------|-----------------------|-------------------------|----------------------|---|---------------------|
| ¾" x 1½"                   | 1¼" x 2"              | Cut 2 squares 3" x 3"   | 1                    | Cut 8 squares 1¾" x 1¾"   | 1                   |
| 1" x 2"                    | 1½" x 2½"             | Cut 2 squares 3½" x 3½" | 2                    | Cut 8 squares 2" x 2"   | 2                   |
| 1¼" x 2½"                  | 1¾" x 3"              | Cut 2 squares 4" x 4"   | 3                    | Cut 8 squares 2¼" x 2¼"   | 3                   |
| 1½" x 3"                   | 2" x 3½"              | Cut 2 squares 4½" x 4½" | 4                    | Cut 8 squares 2½" x 2½"   | 4                   |
| 1¾" x 3½"                  | 2¼" x 4"              | Cut 2 squares 5" x 5"   | 5                    | Cut 8 squares 2¾" x 2¾"   | 5                   |
| 2" x 4"                    | 2½" x 4½"             | Cut 2 squares 5½" x 5½" | 4                    | Cut 8 squares 3" x 3"   | 4                   |
| 2¼" x 4½"                  | 2¾" x 5½"             | Cut 2 squares 6" x 6"   | 3                    | Cut 8 squares 3¼" x 3¼"   | 3                   |
| 2½" x 5"                   | 3" x 5½"              | Cut 2 squares 6½" x 6½" | 2                    | Cut 8 squares 3½" x 3½"   | 2                   |

## For the Tuffet Finishing

| Fabric Position      | Cutting                    |
|----------------------|----------------------------|
| Top of Geese Row     | Cut 8 rectangles 2" x 3¼"  |
| Geese Framing Strips | Cut 16 strips 3½" x 20"    |
| Button               | Cut 1 square 4" x 4"       |
| Bottom Panel         | Cut 1 square 18" x 18"     |
| Bottom of Geese Row  | Cut 8 rectangles 4½" x 5½" |

## Piecing Instructions

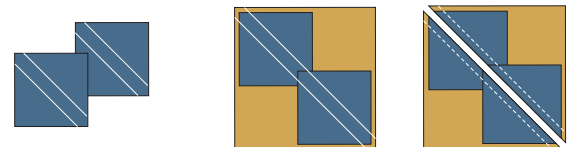
Work your way through one size of Flying Geese at a time. This will help reduce confusion when trimming the Flying Geese.

**Deb's Note:** Refer to the instructions that came with your Wing Clipper® I and II tools, or watch the instructional videos at [Studio180Design.net](http://Studio180Design.net) for additional information, including left-handed cutting!

**Step 1 - Mark the small squares.** Start with one large light square and four small dark squares of the same color. Mark the wrong side of each small square, using the Quilter's Magic Wand™ marking ¼" away from the center diagonal.

**Step 2 - Position** two small squares in opposite diagonal corners of the large square, right sides together. Nudge the small squares in toward the center a few threads from the edge of the large square and align the drawn lines.

**Step 3 - Stitch** on the two marked lines, then cut between the stitching lines along the center diagonal of the squares. Press your seams toward the small triangles.



**Steps 1 to 3 - Mark, Position, Stitch, Cut, and Press**

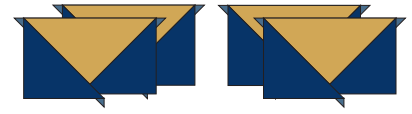
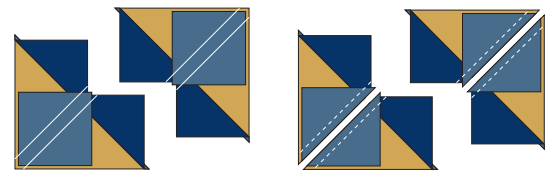
**Step 4 - Position** your remaining two small squares, one in each corner of your heart shaped units. Nudge these squares a few threads in from the edge of the large triangle.

**Step 5 - Stitch** along the two marked lines.

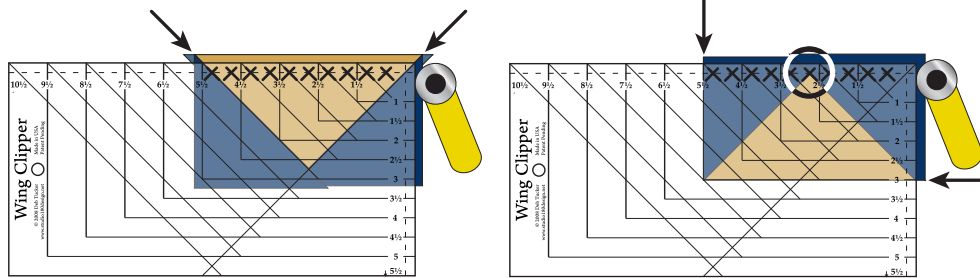
**Step 6 - Cut** between the stitched lines along the center diagonal of the small squares and press toward the small triangle.

**Step 7 - Trim down.** Refer to the chart below to know whether you need to trim with the **Wing Clipper® I** or **II**. Position your **Wing Clipper®** tool over your unit, aligning the correct diagonal guidelines of the ruler with the seams of your unit and trim.

**Step 8 - Rotate** the unit 180° and align the correct size horizontal and vertical guide lines with the edges of the unit. Align the “x” on the **Wing Clipper®** with the seam intersection of your unit and trim again. Repeat for all 8 sizes of Flying Geese you need to make.



**Steps 4 & 6 - Position, Stitch, Cut, and Press**



**Steps 7 & 8 - Trim, Rotate, and Trim Again**

### Wing Clipper® Size Chart

| Flying Geese Finished Size | Flying Geese Cut Size | Wing Clipper® to Use |
|----------------------------|-----------------------|----------------------|
| ¾" x 1½"                   | 1¼" x 2"              | Wing Clipper® II     |
| 1" x 2"                    | 1½" x 2½"             | Wing Clipper® I      |
| 1¼" x 2½"                  | 1¾" x 3"              | Wing Clipper® II     |
| 1½" x 3"                   | 2" x 3½"              | Wing Clipper® I      |
| 1¾" x 3½"                  | 2¼" x 4"              | Wing Clipper® II     |
| 2" x 4"                    | 2½" x 4½"             | Wing Clipper® I      |
| 2¼" x 4½"                  | 2¾" x 5½"             | Wing Clipper® II     |
| 2½" x 5"                   | 3" x 5½"              | Wing Clipper® I      |

# Constructing the Tuffet

**Step 1 - Center** the Flying Geese units starting with the largest unit on the bottom. Off-set each edge by  $\frac{1}{4}$ " and stitch together making a strip of Flying Geese; maybe we should call this a flock.

**Step 2 - Stitch** the 2"x 3 $\frac{1}{4}$ " rectangles you cut for the top of the geese row to the *top* edge of the Flying Geese strip.

Stitch the 4 $\frac{1}{2}$ " x 5 $\frac{1}{2}$ " rectangles you cut for the bottom of the geese row to the *bottom* of the largest Flying Geese unit. The Flying Geese strip should measure 20" long.

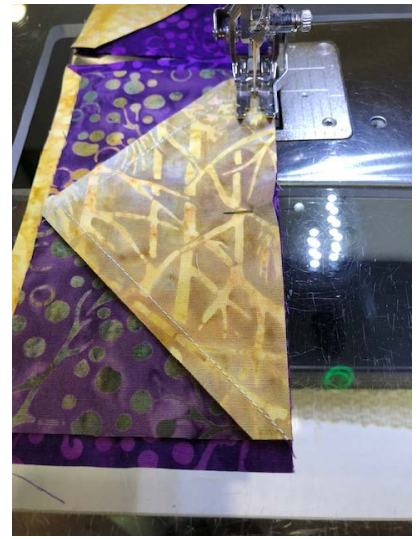
Adjust the strip of Flying Geese to match the top edge of the fabric foundation.

Center the Flying Geese strip onto the *unprinted side* of the fabric foundation.

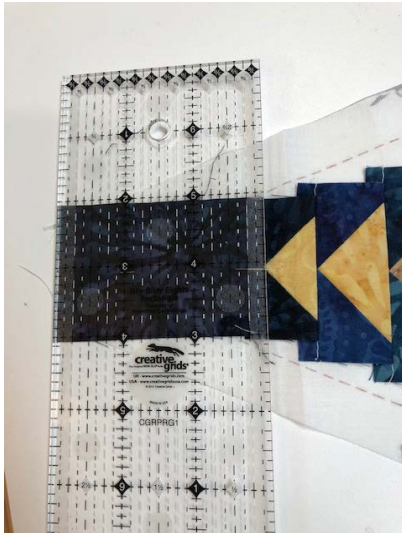
**Step 3 - The Flying Geese strip should look like this.** Note the visible dots and dashes are printed on the opposite side of the fabric foundation.

**Step 4 - Flip** the fabric foundation over, realigning the Flying geese strip so the points of the geese are on the center line marked on the foundation.

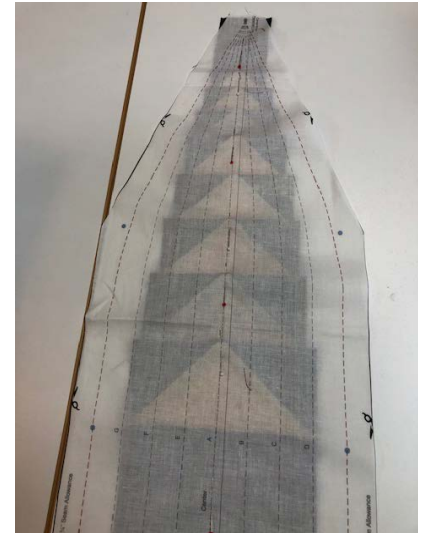
Pin securely on the center line. Adjust the long geese edges so they are parallel with the bottom of the tuffet. Pin each unit securely.



**Step 1 - Center and Stitch**



**Steps 2 & 3 - Attach Top and Bottom Rectangles**

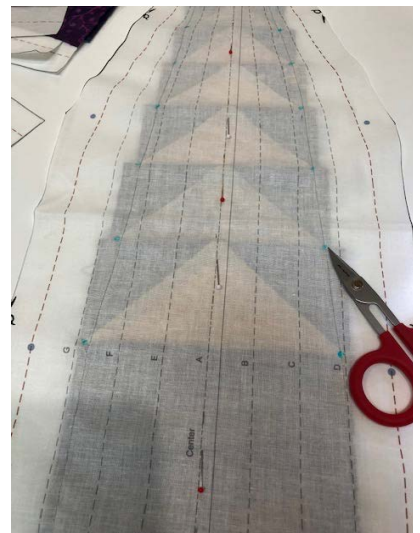


**Step 4 - Flip Over**

**Step 5 - Use a marker** to identify the tip of the geese wing. I placed the mark a dot width to the outside edge of the point.

Note the edges of the Flying Geese units do not match up with the already printed sewing lines on the foundation; not a problem. You can draw new sewing lines. To do so, connect the dots on the outside edge of the Flying Geese with a wash away marker.

Next, stitch along the new sewing line to attach the Flying Geese strip to the foundation. Sew slowly and remove any pins as you go. If you can enlarge this photo, the scissor is pointing to a wash-away dot and the stitching line. I call this stitching, "stay stitching".



**Step 5 - Mark and Stay Stitch**

**Step 6 - Flip** the foundation over. The stay stitching line is easily visible making it easy to ensure none of the tips are cut off. Make adjustments if necessary.

**Step 7 - Right sides together, pin** one of the 3 ½" x 20" strips to the edge of the Flying Geese strip. Pin carefully.

*Flip the foundation over* and stitch the fabrics together by stitching on top of the stay stitching sewing line. Sorry, I did not take a photo of that step.

**Step 8 - Repeat** step 7 to attach a 3 ½" x 20" strip of fabric on the left side of the foundation.

Turn right sides up and press the strips so they are flat. A little spray of Mary Ellen's Best Press will encourage the shoulder area to lay flat.

Flip the foundation over so the foundation side is up and trim the exposed fabric to match the shape of the fabric foundation.

Remove any stay-stitching that may show on the right side of the fabric.



**Steps 6 & 7 - Flip, Check Alignment, Pin, Flip Again, and Stitch**

**Step 8 - Repeat for Other Side**

**Step 9 - Stay stitch** the fabric strips to the outer edges of the foundation. Do not skip this step, it prevents puckering.

**Step 10 - Pin** a pair of the foundations together and sew from the bottom to the top. Stop at the dot at the top.

**Note:** I insert the straight pins so they go into and out of the fabric foundation *on the sewing line on both the top and bottom foundation*. I found this method keeps the foundations from slipping while sewing.



**Step 9 - Stay Stitch**

**Step 10 - Pin and Stitch**

Repeat this process until there are four sets of two foundations each.

Next, pin and sew foundation pairs (sets), together. Now there are two sets of foundations with four foundations each.

Finally, pin and sew the remaining seams to finish off a tuffet top.

**Step 11 - Trim** the foundation seam allowance from the top to about 2" below the shoulder of the tuffet foundation. Press the seams open.

**Step 12 - Flip over** and admire your work!

The remaining steps to finishing your tuffet top are explained in detail in the 8-page instruction booklet included in the "Pieced 18" Tuffet Fabric Foundation with Instructions".

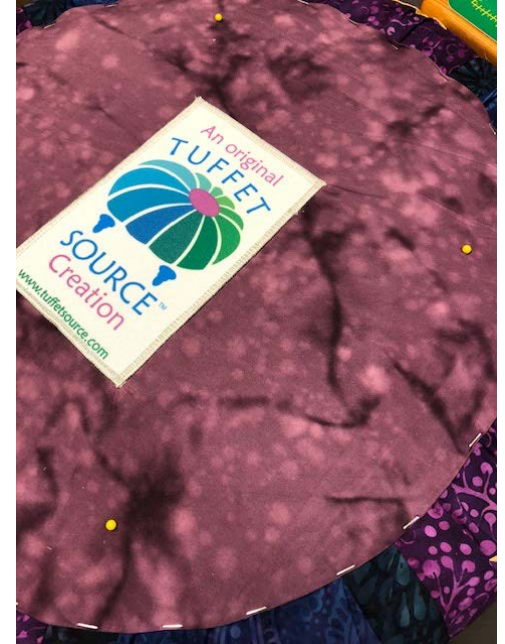
**Step 13 - I like to put a label** on the bottom of my tuffets. I had this label printed for me by Spoonflower. Or, if you have an embroidery unit with your sewing machine, say something wonderful to identify your work.



**Step 11 - Trim Seam Allowance**



**Step 12 - Flip Over**



**Step 13 - Add a Label**

**Step 14 - Staples** used to secure the bottom cover to the tuffet are visible in step 13. I cover my stapling by gluing a flat braid on top of them. My favorite fabric glue is Fabri-Tac by Beacon. If a tuffet is playful in nature, I've been known to use rick-rack for this step.



**Step 13 - Hide Staples**

**Step 15 - View from the top...ahhhh, love this view.**

**Step 16 - Document your work with a photo** and please email a copy to me at: [sharyn@tuffetsource.com](mailto:sharyn@tuffetsource.com). The best photos include the tuffet-maker! P.S. I would love it if you “liked” the Tuffet Source Facebook page: [www.facebook.com/TuffetSource/](http://www.facebook.com/TuffetSource/)



**Steps 15 & 16 - Admire and Document Your Work**

© 2019 Studio 180 Design, Ltd. & The Tuffet Source

All rights reserved. No part of this pattern may be photocopied or reproduced in any form without prior written consent from Studio 180 Design, Ltd.

[Studio180Design.net](http://Studio180Design.net)

[TuffetSource.com](http://TuffetSource.com)

We hope you have enjoyed making your own version of *Geese Galore Tuffet*, and we hope you consider sharing a photo of your project either on Instagram ([#GeeseGaloreTuffetPattern180](https://www.instagram.com/GeeseGaloreTuffetPattern180)) or on our Gallery page! To see other tools and patterns designed by the Studio 180 Design team, please visit our website:

[Studio180Design.net](http://Studio180Design.net)