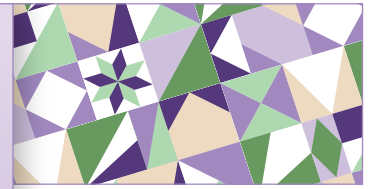


Created by Sarah Furrer  
Studio180Design.Net

# BlockBusters

## Copper River

Made using Studio 180 Design's Split Rects®  
and Tucker Trimmer® III tools, and the  
Triangle Pizazz Technique Sheet



BlockBusters 2020 #47  
Difficulty: ★★☆☆☆

Knowing many of you are home working on quilts, this month we have something a little different. It's an easy one block stashbuster quilt that's loads of fun for your kids, grandkids, child donation quilts, or even a quilt for that special fisherman in your life!

It's just about time for the Copper River Salmon run, and when you put multiples of this block together, that's just what you get – a big school of fish swimming upstream! So grab some blues and blue-green fabrics for the water and some bright colors for your fish, and have some fun with this quick, easy to make block!

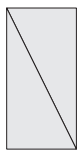
All the instruction you need to make the units required for this block came with your **Split Rects®** tool and Triangle Pizazz Technique Sheet. There are charts, step-by-step graphics, and directions. Use the chart to find the information you need for the finished size of the units you want to make, and follow it through to find what you need to cut to make those units. Then work your way through the instructions.

When making your Triangle Pizazz units, make sure that you position the small square correctly for the A unit. If you make B units your block will have a completely different look, so pay attention and follow the A unit diagrams.

The block also needs one mirror image pair of Split Rects units - one unit that slants from the lower right to upper left, Type #1, and one unit that slants from the lower left to upper right, Type #2. Since you need to make a mirror image pair, you will want to fold the strips right or wrong sides together when cutting your elongated triangles. Pay attention as you sew your block together to be sure you have the Split Rects units positioned correctly.

### Unit Summary

Unit A



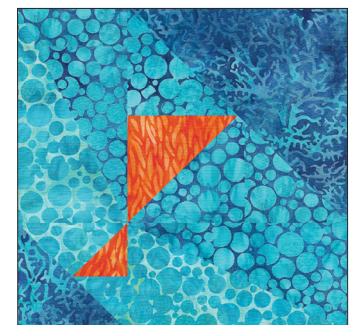
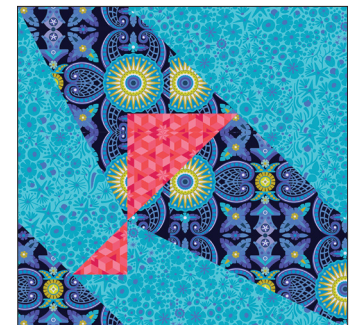
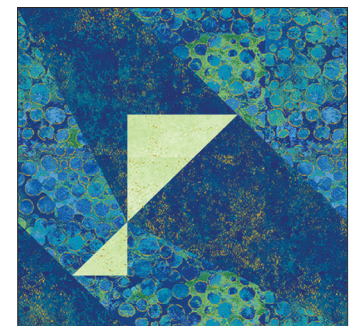
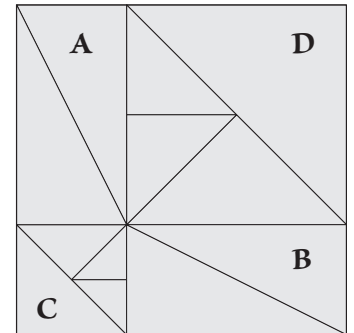
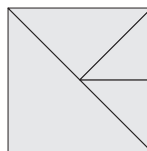
Unit B



Unit C



Unit D



## Cutting Chart

Unit	# of units required	6" Block	9" Block	12" Block
A: Split Rects, Unit Type #1; Lower Right to Upper Left	1	2" x 4" finished size 2½" x 4½" cut size	3" x 6" finished size 3½" x 6½" cut size	4" x 8" finished size 4½" x 8½" cut size
B: Split Rects, Unit Type #2; Lower Left to Upper Right	1	2" x 4" finished size 2½" x 4½" cut size	3" x 6" finished size 3½" x 6½" cut size	4" x 8" finished size 4½" x 8½" cut size
C: Triangle Pizazz, Unit A	1	2" finished size 2½" cut size	3" finished size 3½" cut size	4" finished size 4½" cut size
D: Triangle Pizazz, Unit A	1	4" finished size 4½" cut size	6" finished size 6½" cut size	8" finished size 8½" cut size

## Quilt Layout

