


TPC - 2TBS Barcode Scanner



FEATURES

Plug & Play USB barcode Scanner : Gdhead USB Barcode scanner just only need via USB cable to connect with computer, no need to download apps, no need to install software drive, Easy use, Simple and time - saving

Outstanding 1D & 2D QR Decode Capability : Gdhead 2D barcode scanner with superior decoding capability can work with 99.9% of barcode, easily scan 1D, 2D such as QR code, Data Matrix, Mxicode, Aztec code. Etc on labels, paper, and mobile phone or computer displays.

Study Anti-shock and Durable Design : Ergonomic design with high-quality ABS, this handheld barcode scanner can withstand repeated drop from 5ft/1.5m high to the concrete ground, durable to use.

Excellent Compatibility : The 2D scanner can with USB cable perfectly work laptop, PC, Computer register POS system. Easily compatible with common operating system like windows xp/7/8/10, Mac OS, Linux.

Multiple Configuration Options : Our 1D barcode scanner support turns on or off the sound and vibration, hide/add custom prefix digits, delete character. And cab keyboard keys (TAB, CR & LF, etc) to the scanning operation. Also support enable or disable barcode type and so on. You can according to your need to choose, so useful for you.

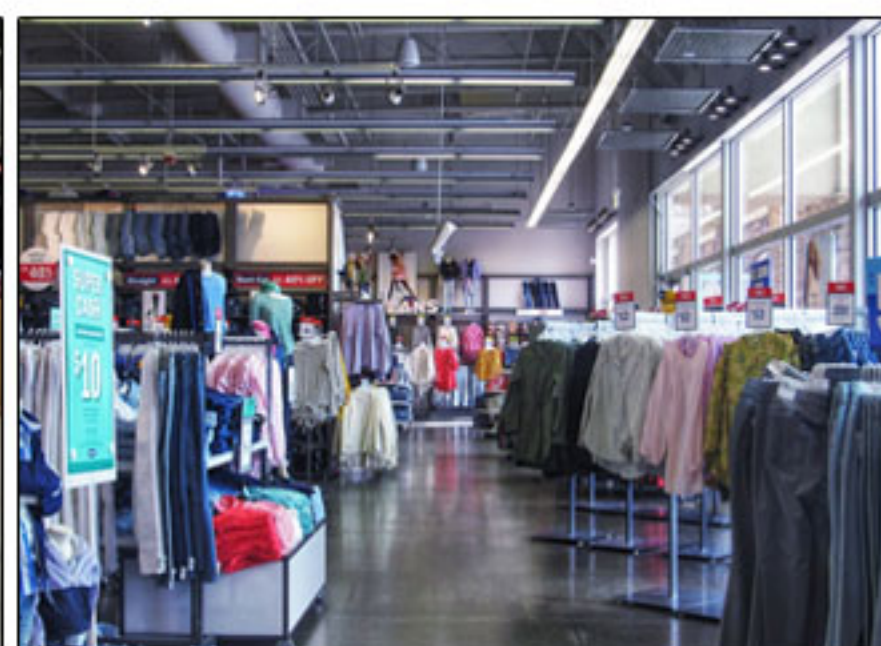
APPLICATION



Hospital



Super Market



Shop



Warehouse

Technical Details

Electrical Specification	
Model	TPC-2TBS
Input Voltage	3.3V / 5V \pm 10%
Resolutions	4mil
Performance Characteristics	
Scanning type	640 x 480 (CMOS) Optional
Light Source	630nm LED
Button Life	500,000 times
Speed	200 times / sec
Roll / Pitch / Yaw	360°(Roll), \pm 65°(Skew), \pm 65°(Pitch)
Minimum print contrast	25%
Symbology Decode Capability	1D : UPC / EAN, with complemented UPC / EAN, Code 128, Code 39, Code39Full ASCII, Coda bar, Industrial / Interleaved 2 of 5, Code 93, MSI, Code11, ISBBN ISSN, Chinapost etc. 2D : PDF417 QR Code Data Matrix Code etc.
User Environment	
Operating Temperature	0°C to 50°C
Storage Temperature	-40°C to 70°C
Humidity	5% to 98% relative humidity, non-condensing
Drop	1.5M
Ambient Light Immunity	0-100,000 Lix.
Physical Characteristics	
Dimension	170 x 62 x 112 mm
Weight	120g