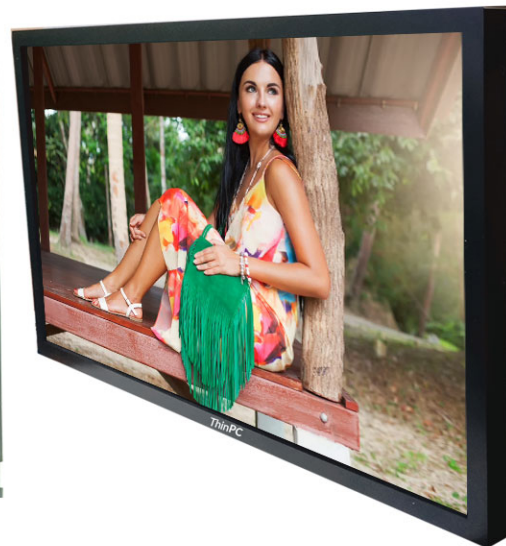
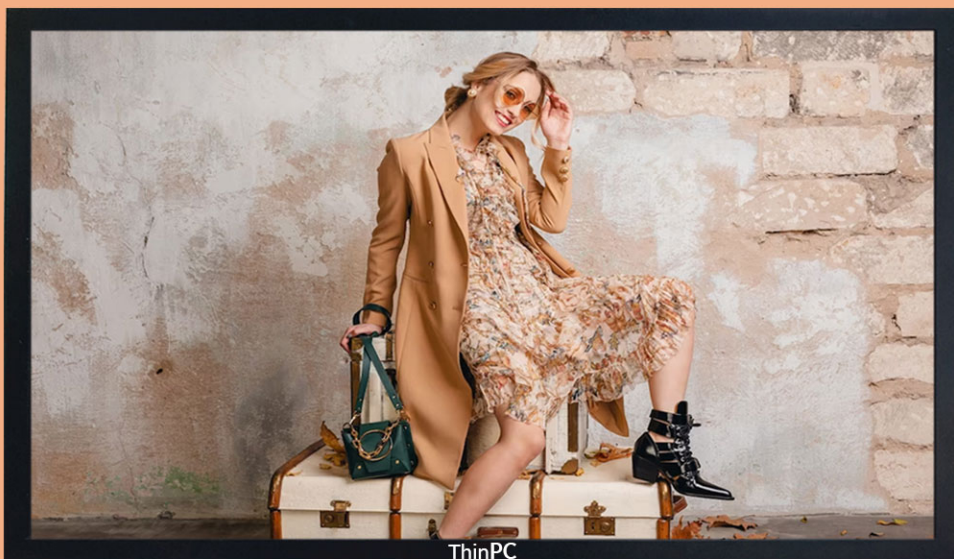


# 21.5" Android Digital Display



# Technical Specification

Model No.	TPC215M (No Touch Panel)
Chipset	A133 Quad - Core ARM Cortex - A53, 1.7 GHz
Memory	1GB
Storage	32GB
LCD Size	21.5"
Resolution	1920 x 1080 IPS Panel
Aspect Ratio	16:9
Panel	IPS LCD Panel
View Angle	178° x 178° (H/V)
Operation system	Android 10.1
USB Port	USB2.0 & Micro USB
Memory Card	TF (up to 64GB)
Built-in WIFI	2.4G+5G Dual WiFi
Built-in Speaker	2X2W/8Ω
Bluetooth	Yes
Language	English & Multi-language Selectable
Dimension	505 x 295 x 20 mm (W x H x D)
Weight	2.130 Kg
Warranty	1 Year Carry in Warranty

# DIMENSION

