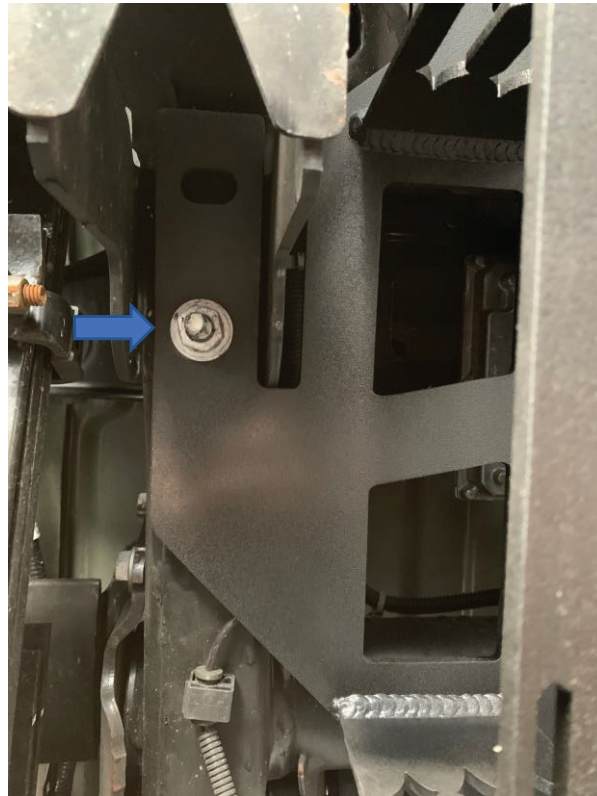


2011-2019 GM-HD GOLIATH TRAIN HORN MOUNT

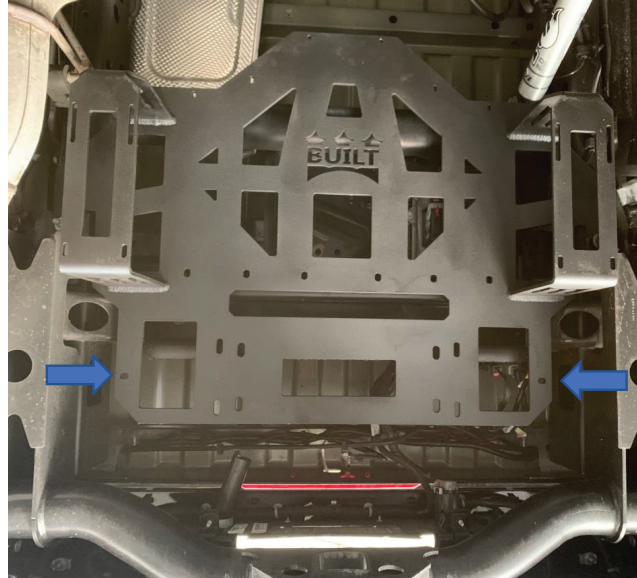
Rear bumper of truck



Front of the truck

- Remove spare tire from rear of truck. This will not be re-installed.
- Remove mounting bracket/tube from the frame of the truck by unbolting it and cutting the tube or bending the tube. These items will not be re-installed.
- Unbolt the first hitch nut circled below. This will be the nut closest to the front of the truck.

2011-2019 GM-HD GOLIATH TRAIN HORN MOUNT

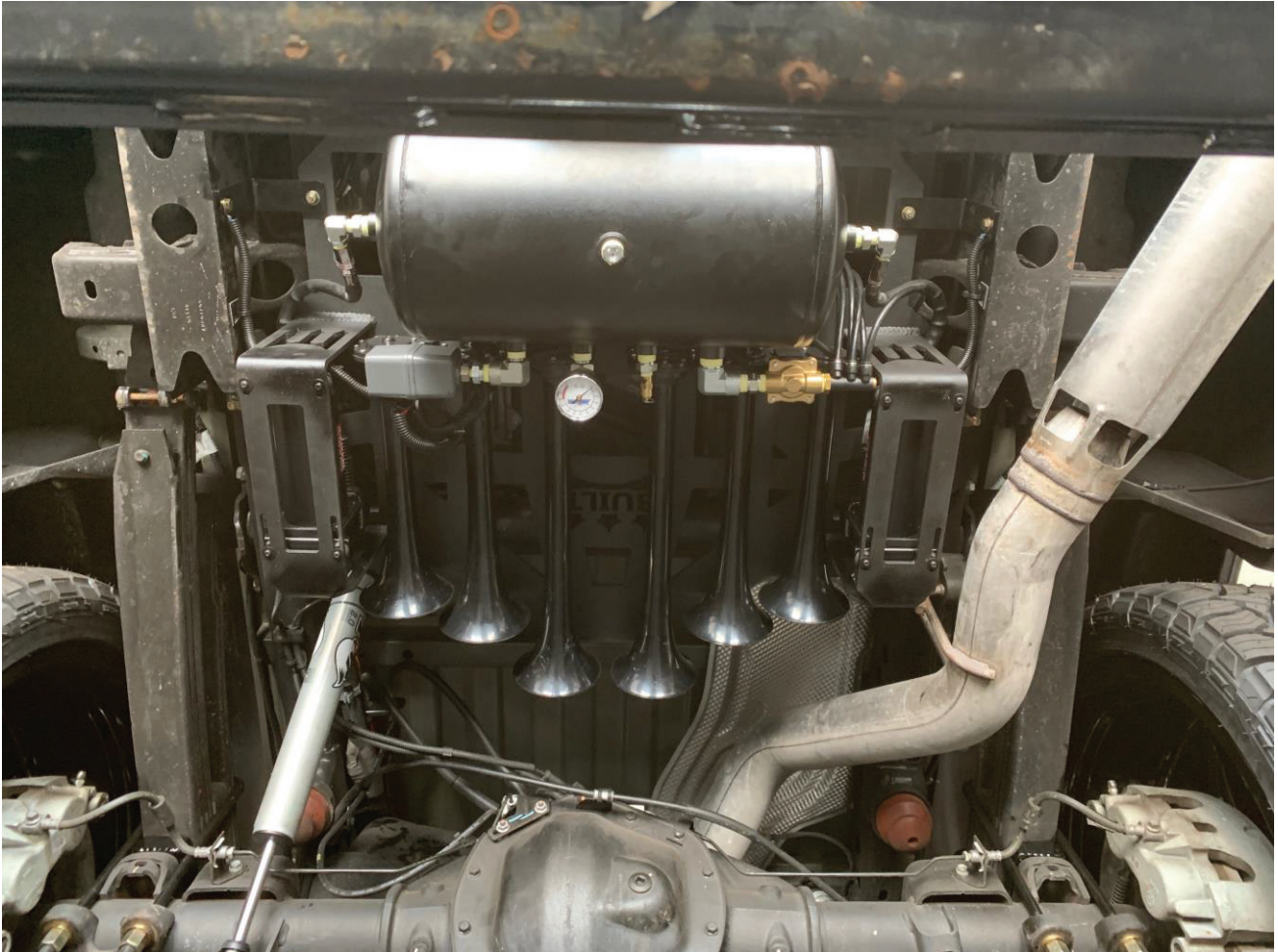


- Put the mount on unloaded, snug the hitch nuts you removed. Install L-brackets to these holes circled in the picture above.



- Install the L bracket on to the horn mount using the provided stainless hardware. **Once installed, drill a 5/16" hole into the hitch.**

2011-2019 GM-HD GOLIATH TRAIN HORN MOUNT



- Remove the mount and install your horns, tank and compressor.
- We recommend a friend to help you lift this mount into the truck, it has to be loaded pre-installation, otherwise you will fight every bolt on this, the mount is meant to be an easy way to mount/install horns, have a friend on standby. Wicked Customs uses a forklift to install these on a drive on rack, if you are equipped to do so, that is also an option!