



01-19 GM 1500/2500/3500

Goliath Train Horn Mount

ATTENTION

::::::BEFORE POWDER-COATING YOUR MOUNT::::::

*******BEFORE INSTALLING HORNS ON YOUR MOUNT*******

TEST FIT THE MOUNT TO THE TRUCK

**THERE ARE VARIATIONS THAT ARE NOT COMMON, BUT ARE A
POSSIBILITY WITH TRUCK MANUFACTURING.**

**THESE VARIATIONS MAY EFFECT HOW THE MOUNT FITS ON THE
TRUCK.**

**HORNBLASTERS DOES NOT COVER POWDER-COATING FEES ON
HORN MOUNTS**

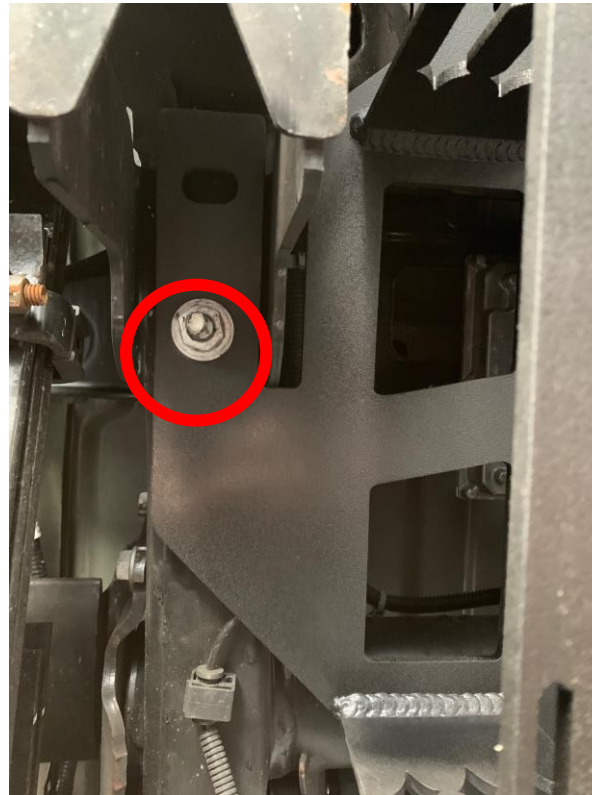
01-19 GM 1500/2500 Goliath Train Horn Mount

- Remove spare tire from rear of truck. This will not be re-installed.
- Remove mounting bracket/tube from the frame of the truck by unbolting it and cutting the tube or bending the tube, These items will not be re-installed.
- Unbolt the first hitch nut circled below. This will be the nut closest to the front of the truck.

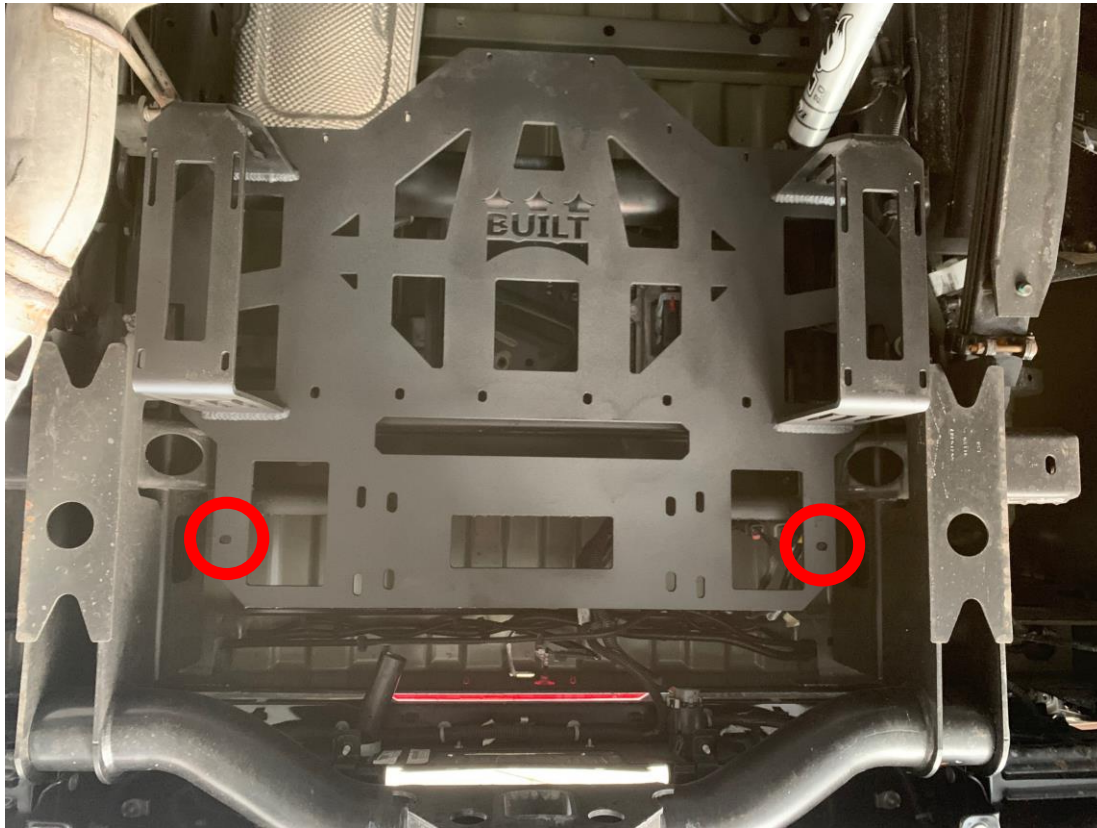
Rear bumper of
truck



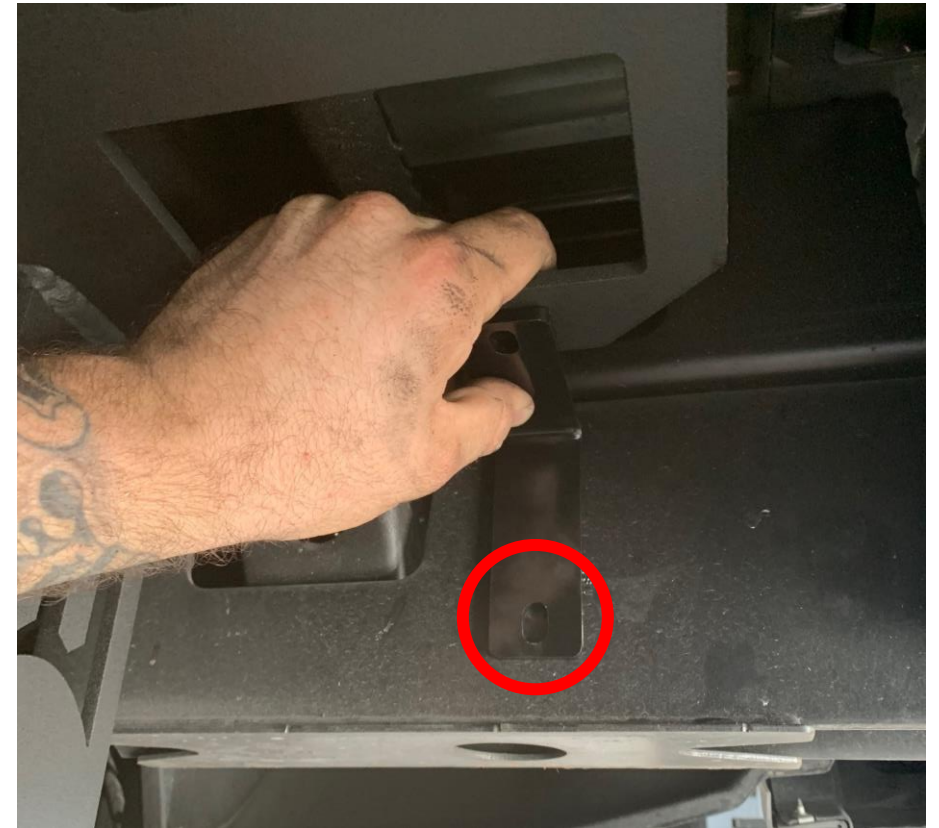
Front of the
truck



01-19 GM 1500/2500 Goliath Train Horn Mount



- Put the mount on unassembled, snug the hitch nuts you removed. Install L-brackets to these holes circled in the picture above.



- Install the L bracket on to the horn mount using the provided stainless hardware. Once installed, drill a 5/16" hole into the hitch. Outlined in **RED**.

01-19 GM 1500/2500 Goliath Train Horn Mount



- Remove the mount and install your horns, tank and compressor.
- It's a good idea to have a friend help you lift the mount into position because it should be fully assembled before you install it. This will make it much easier to attach everything, as trying to do it piece by piece can be very difficult. Having a friend to assist will ensure the process goes smoothly.

