

Human ACE2 Protein

Cat. No. **bs-46015P**

Description

Protein Sequence	Recombinant human ACE2 is expressed from a mammalian cell line with a hFc tag at the C-terminal. It contains Gln18- Ser740.
Source	Mammalian Expression System
Accession	Q9BYE1
Mol wt	The protein has a predicted MW of 109.2 kDa. Due to glycosylation, the protein migrates to 115-130KD based on the Bis-Tris PAGE result.
Endotoxin	Less than 1EU per ug by the LAL method.
Purity	>95% as determined by Bis-Tris PAGE
Activity assay	Not tested.

Formulation and Storage

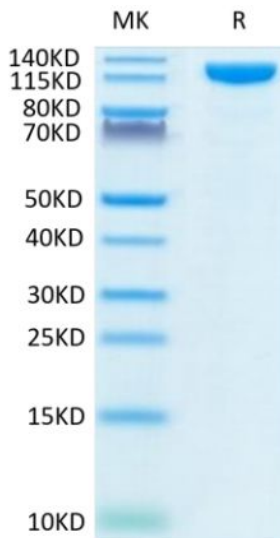
Formulation	Lyophilized powder (Lyophilized from 0.22um filtered solution in 20mM PB (pH 7.4). Normally 5% trehalose is added as protectant before lyophilization.)
Storage	The product should be stored at -70°C or -20°C.

Background

ACE2 (Angiotensin I Converting Enzyme 2) is a Protein Coding gene. Diseases associated with ACE2 include Severe Acute Respiratory Syndrome and Neurogenic Hypertension. The protein encoded by this gene belongs to the angiotensin-converting enzyme family of dipeptidyl carboxydipeptidases and has considerable homology to human angiotensin 1 converting enzyme. This secreted protein catalyzes the cleavage of angiotensin I into angiotensin 1-9, and angiotensin II into the vasodilator angiotensin 1-7.

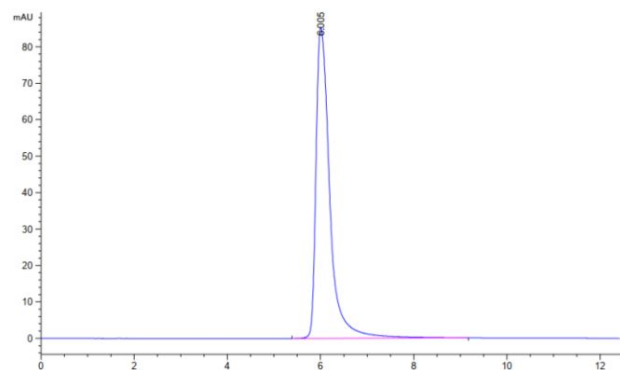
Assay Data

Tris-Bis PAGE



Recombinant human ACE2 on Tris-Bis PAGE under reduced condition. The purity is greater than 95%.

SEC-HPLC Data



The purity of human ACE2 is greater than 95% as determined by SEC-HPLC.