

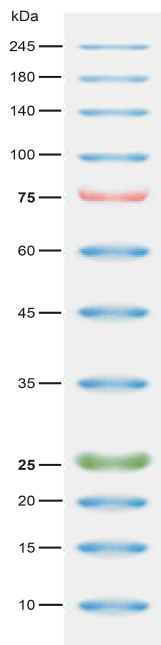
## BiossPM<sup>TM</sup> Rainbow Protein Marker (10~245 kDa)

Cat. No.: PM1245

Size: 100  $\mu$ l (20T) / 250  $\mu$ l (50T) / 10 x 250  $\mu$ l (500T)

Storage: -20°C for 2 years, 4°C for 3 months

PM1245



### General Information

BiossPM<sup>TM</sup> Rainbow Protein Markers are designed for monitoring protein separation during SDS-polyacrylamide gel electrophoresis, verification of Western transfer efficiency on membranes (nitrocellulose, PVDF, or nylon) and for approximating the size of proteins.

BiossPM<sup>TM</sup> Rainbow Protein Marker PM1245 (10~245 kDa) is a ready-to-use three-color protein standard with 12 pre-stained proteins covering an extra range of molecular weights from 10 to 245 kDa, approximately 0.2~0.4 mg/ml of each protein in the buffer. Proteins are covalently coupled with a blue chromophore except for two reference bands (one green and one red bands at 25 kDa and 75 kDa, respectively) when separated on SDS-PAGE.

### Advantages

- Premixed with a loading buffer for direct loading.
- Ready to use with no heating, diluting, or additional reducing agent required.
- Two reference bands (75 kDa /Red and 25 kDa /Green) make the size-determination easy.

### General Protocol

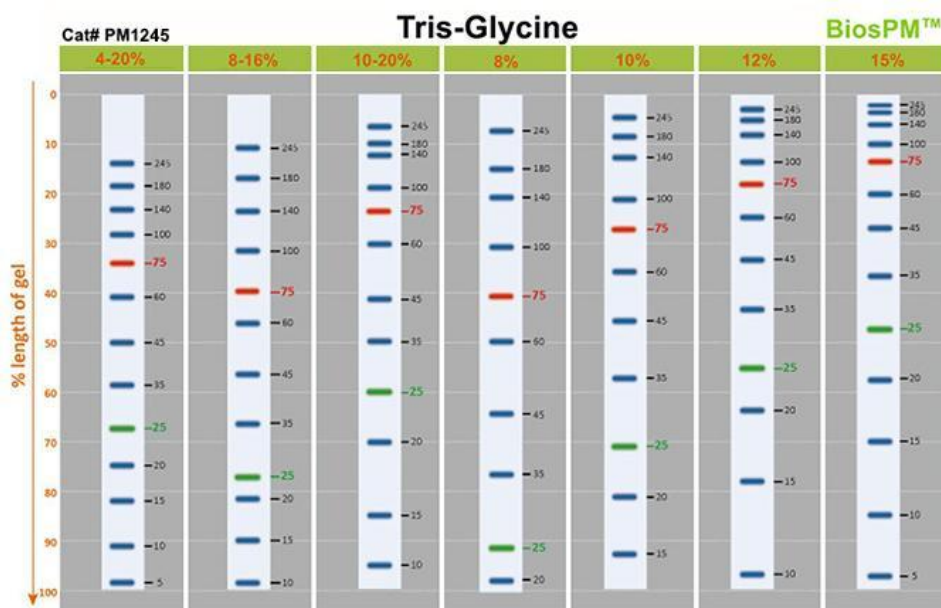
1. Simply remove from the freezer, warm to room temperature, and vortex gently to ensure the solution is homogeneous.
2. Then load 3~10  $\mu$ l of the markers in one well dependent on the gel system to be used. It is recommended to use a 4-20% gradient gel or a homogeneous gel of greater than 15% for the complete separation of the low molecular weight protein standards.

**Important Note:** This product as supplied is intended for research use only, not for use in human, therapeutic or diagnostic applications.

## Precautions

1. BiossPM™ Rainbow Protein Markers are not recommended to be used as standards for quantitative molecular mass determinations, but only used as a qualitative tool.
2. It is not recommended to repeatedly freeze and thaw of reconstituted BiossPM™ Rainbow Protein Markers.
3. Large protein standards in the marker may require longer transfer time or higher transfer voltages for Western blotting.
4. The mobility of pre-stained proteins varies in different running buffers. However, this variation will not affect the molecular weight determination role of the markers in the same buffer system.
5. This product is for R&D use only.

## Migration patterns and approximate MWs (kDa)



**Important Note:** This product as supplied is intended for research use only, not for use in human, therapeutic or diagnostic applications.