

## Mouse Insulin Ready-To-Use IHC Kit

Cat. No.: IHC0195M

Sample Type: FFPE tissue  
(including a control slide)

Size: 50T

**Storage and Stability:** Please store components at the temperatures indicated on the individual tube labels. The kit is stable for 6 months from the date of receipt.

### General Information

| Number | Component   | 50T     | Concentration | Storage |
|--------|---|---------|---------------|---------|
| 1      | PBS Buffer (powder)                                 | 2 L×2   | 20x           | RT      |
| 2      | Antigen Retrieval Buffer                            | 20 ml   | 100x          | 2-8°C   |
| 3      | Endogenous Peroxidase Blocking Buffer               | 3 ml    | RTU           | 2-8°C   |
| 4      | Blocking Buffer                                     | 3 ml    | RTU           | 2-8°C   |
| 5      | Primary Antibody (Mouse Insulin Rabbit pAb)         | 6 ml    | RTU           | 2-8°C   |
| 6      | Secondary Antibody (Goat Anti-Rabbit IgG H&L / HRP) | 6 ml    | RTU           | 2-8°C   |
| 7      | Chromogen Component A                               | 0.3 ml  | RTU           | -20°C   |
| 8      | Chromogen Component B                               | 0.3 ml  | RTU           | -20°C   |
| 9      | Counter Staining Reagent                            | 5 ml    | RTU           | RT      |
| 10     | Differentiation Reagent                             | 6 ml    | RTU           | RT      |
| 11     | Mounting Media                                      | 5 ml    | RTU           | RT      |
| 12     | Control slide (Mouse pancreas)                      | 1 slide | RTU           | RT      |
| 13     | Datasheet   | 1 copy  |               |         |

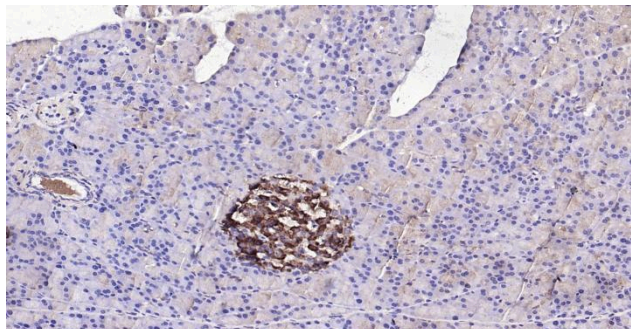
### Background

Insulin is a peptide hormone secreted by beta cells of the pancreatic islets. It regulates carbohydrate, protein and lipid metabolism by enhancing membrane transport of glucose, amino acids, and certain ions. It also promotes glycogen storage, formation of triglycerides and synthesis of proteins and nucleic acids. Insulin is 51-amino acid polypeptide product produced from a precursor peptide, proinsulin. Proinsulin is post-translationally cleaved into two chains (peptide A and peptide B) that are covalently linked via two disulfide bonds and one molecule of C-peptide. Insulin deficiency results in diabetes mellitus, one of the leading causes of morbidity and mortality in the general population. Insulin is also present in tumors of b-cell origin such as insulinoma.

### Synonyms

AA986540; IDDM; IDDM1; IDDM2; ILPR; INS; Ins-1; Ins-2; Ins1; Ins2; Ins2-rs1; InsII; IRDN; Mody; MODY10; Mody4; proinsulin; ins;INS\_HUMAN;Insulin A chain;Insulin B chain; Preproinsulin; Proinsulin; Proinsulin precursor.

## Validation Data



Immunohistochemical analysis of paraffin embedded mouse pancreas tissue slide using IHC0195M (Mouse Insulin IHC Kit).

## Immunohistochemistry Protocol

### 1. Deparaffinization And Rehydration

Immerse slides in fresh xylene for 15 minutes and then repeat two more times using separate containers. Immerse slides sequentially in 100%, 95%, 90%, 80%, and 70% ethanol solutions for 5 minutes each. Rinse slides 3 times with distilled water for 5 minutes each.

### 2. Antigen Retrieval

Add 100×**Antigen Retrieval Buffer** into distilled water to prepare a 1×solution. Boil slides in 1×solution at 95°C-100°C for 15 minutes. Move the slides to 1×solution at room temperature (RT) and allow them to stand for 20 minutes. Rinse 3 times with **PBS Buffer** (dissolve the powder in 2L distilled water) for 5 minutes each.

### 3. Block Endogenous Peroxidase

Drain the liquid off the slides and then use a hydrophobic IHC pen to draw circles on the slides around tissue sections. Add 2-4 drops of **Endogenous Peroxidase Blocking Buffer** directly on slides, covering the whole tissue and block slides for 15 minutes at RT. Rinse 3 times with **PBS Buffer** for 5 minutes each.

### 4. Serum Blocking

Block with 2-4 drops of **Blocking Buffer** for 20 minutes at RT.

### 5. Primary Antibody Incubation

Drain blocking buffer from slides. Incubate slides with 2-4 drops of **Mouse Insulin Rabbit pAb** overnight at 4°C or 1-2 hours at RT. Rinse 3 times with **PBS Buffer** for 5 minutes each.

### 6. Secondary Antibody Incubation

Incubate slides with 2-4 drops of **Goat Anti-Rabbit IgG H&L / HRP** for 1-2 hours at RT. Rinse slides 3 times with **PBS Buffer** for 5 minutes each.

### 7. Signal Development

Remove residual liquid around the tissue section. Add 50ul fresh **DAB Buffer (Chromogen Component A : Chromogen Component B : PBS Buffer=1:1:18)** to cover the tissue. Monitor the reaction under the microscope until a brown color is visible (approximate 3-5 minutes at RT). Stop reaction immediately by rinsing with distilled water. Rinse slides 3 times with distilled water for 5 minutes each.

### 8. Counterstain

Counterstain with an appropriate amount of **Counter Staining Reagent** for 3-5 minutes at RT. Rinse slides with distilled water for 5 minutes. Use 2-4 drops of **Differentiation reagent** to cover the tissue for 30 seconds. Rinse slides twice with distilled water for 5 minutes each.

### 9. Dehydration and Slides Mounting

Immerse slides sequentially in 70%, 80%, 90%, 95%, and 100% ethanol for 5 minutes each at RT. Immerse slides in 2 changes of fresh xylene, 15 minutes each. Drop some **Mounting Media** on the tissue. Mount coverslips.

## Notes

1. The positive control slide provided in the kit allows you to be sure that the experimental set-up is working properly.
2. Do not allow slides to dry at any time during this procedure.
3. Please don't replace the matching reagents in this product with other manufacturers' products.
4. As DAB is a carcinogen, please take necessary precautions.

5. PBS (reagent 1) can be stored for one week at 4°C after preparation; The antigen retrieval buffer (1×reagent 2) and the chromogenic agent (the mixture of reagents 7 and 8) should be prepared right before each assay.

**Please cite this product as "IHC0195M, Bioss Antibodies". Citation example: "Mouse tissue sections using Mouse Insulin IHC Kit (IHC0195M, Bioss Antibodies) were stained for Insulin according to the manufacturer's instructions."**