



**JAY® J3
Cushion
July 2016**



Mark For: _____ Date: _____ Dealer Acct #: _____ Dealer: _____ Dealer Contact: _____ Dealer Address: _____ Dealer City: _____ PR: _____ PC: _____ Dealer Phone: () _____ Fax: () _____ Confirmation Email: _____ Confirm Via: <input type="checkbox"/> Fax <input type="checkbox"/> Email	Submitting for: <input type="checkbox"/> Quote <input type="checkbox"/> Order PO#: _____ <p style="text-align: center;">ADDITIONAL SHIPPING INFORMATION</p> Ship To: _____ Attention: _____ Address: _____ Address: _____ Ship To City: _____ PR: _____ PC: _____ Ship To Phone: () _____ Fax: () _____
---	--

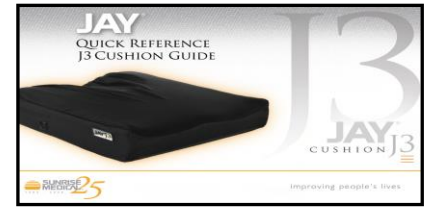
To order a J3 Cushion, a J3 SMART Part Number must be built. Follow the steps below to build your own unique Smart Part #.

Example



J3_CUSHION STEP 1 STEP 2 STEP 3 STEP 4 STEP 5 STEP 6

J3 CUSHION BASE	Select	Part #	Charge	Selected Component
J3 Cushion	<input type="checkbox"/>	J3C	\$803	<div style="border: 1px solid black; padding: 2px; display: inline-block;">J3C</div> J3C



For additional information, please refer to the J3 Cushion Quick Reference Guide. Part # 111903.

STEP 1

CUSHION HEIGHT	Select	Part #	Up-Charge	Selected Component
Standard Height - 3.75"	<input type="checkbox"/>	S	NC	<div style="border: 1px solid black; width: 30px; height: 30px; margin: 0 auto;"></div> S or D
Deep Height - 4.25"	<input type="checkbox"/>	D	\$48	

Note: 12" Wide N/A with Deep

STEP 2

CUSHION WIDTH	Select	Part #	Up-Charge	Selected Component
Standard (12"-21")	<input type="checkbox"/>	XX	NC	<div style="border: 1px solid black; width: 30px; height: 30px; margin: 0 auto;"></div> XX = Width
HD Cushion (22"-24")	<input type="checkbox"/>	XX	\$112	

Note: See chart at right for available sizes

		WIDTH											
		12"	14"	15"	16"	17"	18"	19"	20"	21"	22"	23"	24"
DEPTH	12"	S	S										
	14"	S											
	15"	S											
	16"	S											
	17"	S											
	18"	S											
	19"	S											
	20"	S											
21"	S												
22"	S												
24"	S												
Std PLA		A			B (A available)					C (A&B available)			
		<input type="checkbox"/> Standard Size	<input type="checkbox"/> Special Order	<input type="checkbox"/> N/A	<input type="checkbox"/> S	<input type="checkbox"/> Available in Std. Ht Only							

STEP 3

(NOTE: Optional Step - Only use this section when selecting a non standard PLA size)

PELVIC LOADING AREA (PLA) SIZE	Select	Part #	Up-Charge	Selected Component
A - Small - Standard 12" - 15"	<input type="checkbox"/>	A	NC	<div style="border: 1px solid black; width: 30px; height: 30px; margin: 0 auto;"></div> A, B, or C
B - Medium - Standard 16" - 19"	<input type="checkbox"/>	B	NC	
C - Large - Standard 20" - 24"	<input type="checkbox"/>	C	NC	

*Note: PLA size has been optimized based upon anthropometric studies relative to cushion width.
 Note: Optimal PLA sizing can help provide lower Ischial pressures, improved stability and comfort for the user.*

STEP 4

PLA INSERT	Select	Part #	Up-Charge	Selected Component
Factory Filled (FF) Fluid Pad	<input type="checkbox"/>	FF	NC	<div style="border: 1px solid black; width: 30px; height: 30px; margin: 0 auto;"></div> FF or FV
Field Variable (FV) Fluid Pad	<input type="checkbox"/>	FV	\$10	

*Note: Field Variable comes standard with the following supplement pads:
 PLA A = 2-Medium PLA B = 2-Large PLA C = 2-Xlarge*

Factory Filled



Field Variable



STEP 4 Continued from page 1

	Select	Part #	Up-Charge	Selected Component
ROHO AIR Pad - Single Valve	<input type="checkbox"/>	AS	\$64	<input type="checkbox"/>
ROHO AIR Pad - Dual Valve	<input type="checkbox"/>	AD	\$81	<input type="checkbox"/>

ROHO AIR - Single



ROHO AIR - Dual



Note: Air Pads ship with instructions, air pump, patch kit and nozzle fittings

AS or AD

STEP 5

COVER OPTION	Select	Part #	Up-Charge	Selected Component
Stretch	<input type="checkbox"/>	S	NC	<input type="checkbox"/>
Incontinent	<input type="checkbox"/>	I	NC	<input type="checkbox"/>
Microclimatic	<input type="checkbox"/>	M	NC	<input type="checkbox"/>

S, I, or M

STEP 6 (Optional Step)

POSITIONING COMPONENTS	Select	Part #	Up-Charge	Selected Component
Positioning Components	<input type="checkbox"/>	Part #	\$28	<input type="checkbox"/>

Ships with two lateral thigh pieces as standard

P



Positioning Components
Order Individual components using configurator
Do Not enter "P" in the SMART part number

- 2" Lateral Pelvis (pair) ADD \$ 28
- 2" Medial Thigh (Single) ADD \$ 28
- 2" Lateral Thigh (Pair) ADD \$ 28

Not shown but available through Sun Parts Online:

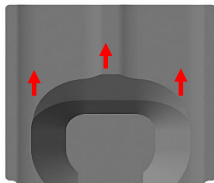
"Pelvic Obliquity Pads" - example part # J3CDCOL

OPTIONAL MODIFICATIONS

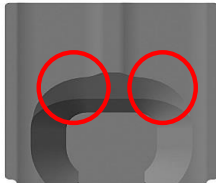
Note: Please contact customer service to discuss your modification options. Some MODS may prevent the use of the reducer rings and/or positioning pieces

Modification	Description	Up-Charge	CODE
Change PLA Size	PLA size different than Step 3. Available A=12"-24", B=14"-24", C=16"-24" (S) or (D)	NC	(IPLAS)
Change PLA Location	Move PLA location. PLA Size remains the same. Available to move up to 4" forward, 1" left or right in 1" increments	NC	(CPLAL)
Femoral Relief	Front of PLA is additionally cutaway to decrease the slope angle from the PLA to the femoral support area	NC	(FTR)
Scrotal Relief	Front and center of PLA is "scooped" out to accommodate organ tissue.	NC	(SR)
Trochanteric Relief	Base material removed to create less pressure at or near the trochanters	NC	(TR)
Positioning Pieces	Include Positioning pieces with cushion but DO NOT INSTALL. Allows for custom installation in the field.	NC	(DNIP)
Notch for Rails	Notch foam base to lower cushion between the seat rails.	NC	(NR)
Fluid Volume Changes	Remove or add fluid to the entire bladder to achieve ideal immersion.	NC	(UF or OF)
Leg Trough Cut	For improved positioning, use this modification to increase the depth ~1" of the femoral trough to support the femurs.	NC	(LTC)
Embroidery	Add personalization for identification purposes. (Hint: Great for large facilities or product identification during cleaning)	NC	N/A

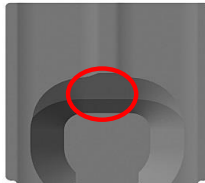
MODIFICATION Diagrams . The red circles DO NOT represent the actual shape of the cutouts. The affected areas will result in smooth transitions and subtle changes that assist in the lessening of pressure in specific areas of the cushion base. These red circles only highlight the area of the base that the MOD will affect



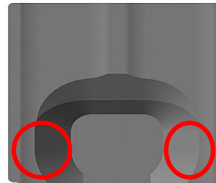
Move PLA Location



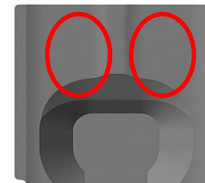
Femoral Relief



Scrotal Relief



Trochanteric Relief



Leg Trough Cut

Note: Multiple combinations of these MODS are possible. Common example is Femoral Transition and Scrotal. Please contact customer service for combinations
Note: If there is a modification that is not listed above, contact customer service and we will do our best to accommodate your needs.

J3 SMART PART #

J3C						
Step 1	Step 2	Step 3	Step 4	Step 5	Step 6	Step 7

POSITIONING COMPONENTS
(If applicable)

PRICE

NOTES

Please visit www.sunparts.us for spare parts information.

