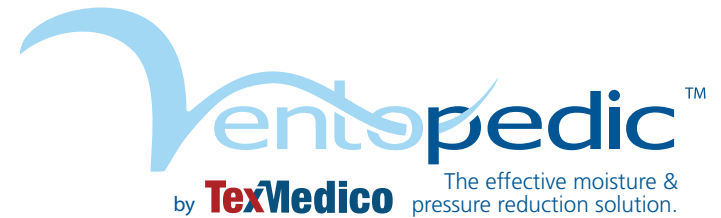
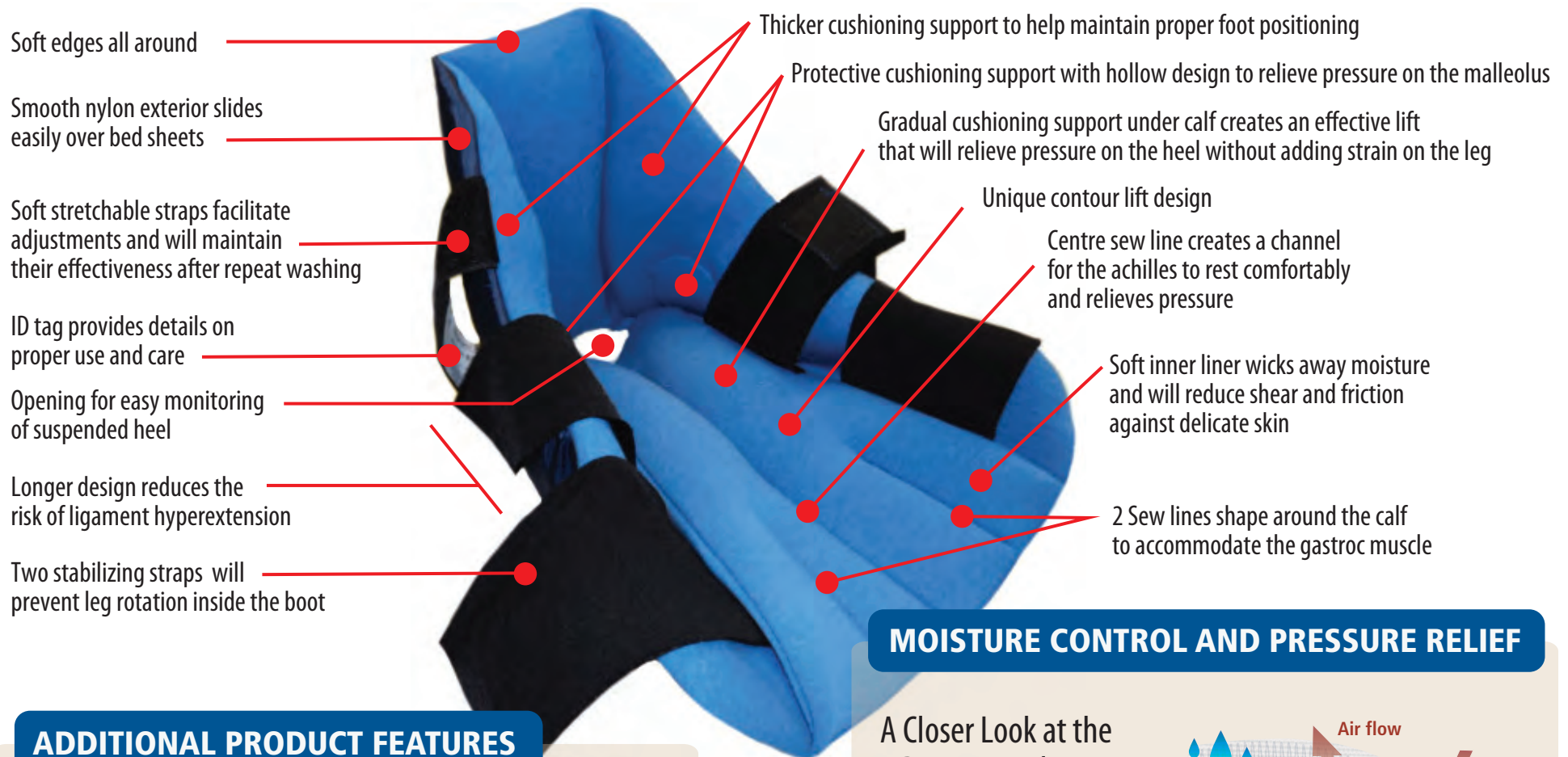


VENTOPEDIC HEEL ELEVATION BOOT WITH BUTTERFLY LIFT



Product Code: VHEB-BL



Soft edges all around

Smooth nylon exterior slides easily over bed sheets

Soft stretchable straps facilitate adjustments and will maintain their effectiveness after repeat washing

ID tag provides details on proper use and care

Opening for easy monitoring of suspended heel

Longer design reduces the risk of ligament hyperextension

Two stabilizing straps will prevent leg rotation inside the boot

Thicker cushioning support to help maintain proper foot positioning

Protective cushioning support with hollow design to relieve pressure on the malleolus

Gradual cushioning support under calf creates an effective lift that will relieve pressure on the heel without adding strain on the leg

Unique contour lift design

Centre sew line creates a channel for the achilles to rest comfortably and relieves pressure

Soft inner liner wicks away moisture and will reduce shear and friction against delicate skin

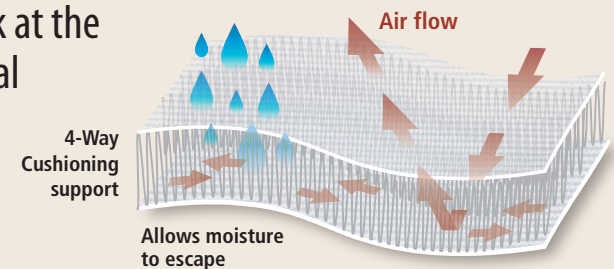
2 Sew lines shape around the calf to accommodate the gastroc muscle

ADDITIONAL PRODUCT FEATURES

- Machine Washable - Washing temperature 160 – 167°F (71 – 75 °C) Drying Temperature 220°F
- **ONE SIZE WILL FIT MOST ADULTS**
- Product is Latex Free.

MOISTURE CONTROL AND PRESSURE RELIEF

A Closer Look at the 3 Dimensional Structure Inside Every Ventopedic Product



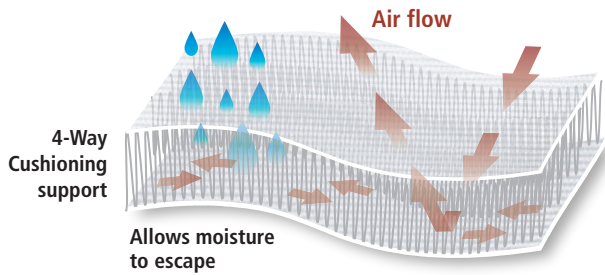
VENTOPEDIC HEEL ELEVATION BOOT WITH BUTTERFLY LIFT

Product Code: VHEB-BL



MOISTURE CONTROL AND PRESSURE RELIEF

A Closer Look at the 3 Dimensional Structure Inside Every Ventopedic Product



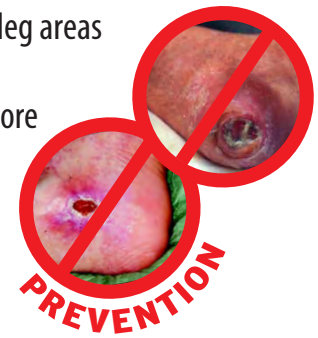
PRODUCT FEATURES

- Controlled levels of hydrophobic and hydrophilic fibers found inside the product allows the product to remain dry and comfortable even under extreme humidity.
- The 3-dimensional structure creates a continuous ventilation of air inside the products while relieving pressure under the calf, achilles and around the foot area.
- Machine Washable - Washing temperature 160 – 167°F (71 – 75 °C) Drying Temperature 220°F
- Product is Latex Free.
- One size fits most adults.

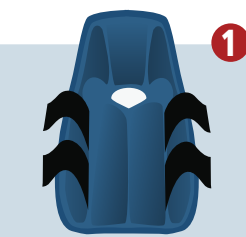
PATIENT RISK FACTORS

Conditions for Heel and Ankle Ulcers:

- Extended periods of immobility
- Inability to move legs or feet
- Numbness of lower leg areas
- Low Braden Scale mobility / activity score
- Diabetes



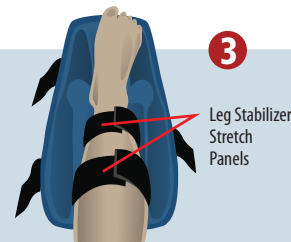
PRODUCT APPLICATION



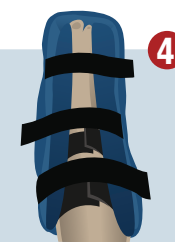
1 Remove the boot from the packaging. Un-do the straps from the Velcro hook fabric and place the boot on the mattress surface beside the patient's leg.



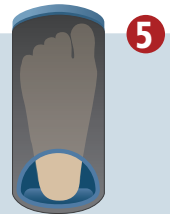
2 Carefully lift the leg and position the heel over the middle opening. While positioning the leg inside the boot, make sure to support the knee to prevent hyperextension.



3 Once heel is comfortably resting over the middle opening you may start adjusting the 2 leg stabilizer stretch panels. Do not over tighten.



4 Once the stabilizer leg panels are comfortably adjusted, you may begin adjusting the 3 outside stretch panels starting with the panel on top of the foot. Do not over tighten.



5 Check by looking and feeling to be sure the heel is floating in the center opening.

Size	Product code	Description
STANDARD	VHEB-BL	VENTOPEDIC HEEL ELEVATION BOOT WITH BUTTERFLY LIFT

To remove: Carefully detach the stretch panels. Remove the patient's leg form the boot while supporting the knee to avoid hyper extension.

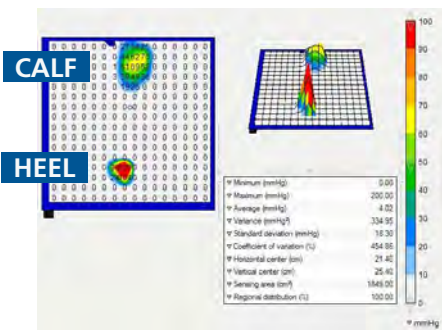


VENTOPEDIC HEEL ELEVATION BOOT WITH BUTTERFLY LIFT VHEB-BL

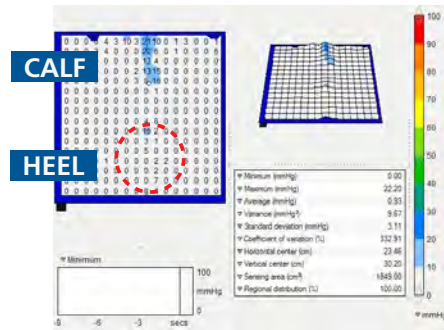


PRESSURE MAPPING HEEL & CALF

Heel and calf placed directly on bed

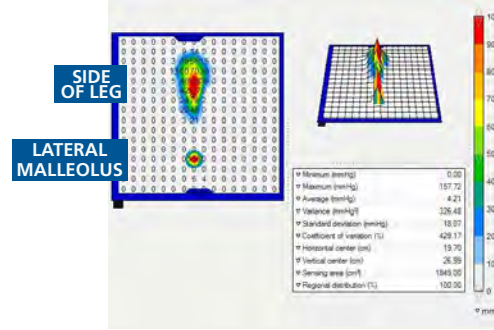


*Heel and calf with
New VenTOPedic Offloading Boot*



PRESSURE MAPPING SIDE LEG & LATERAL MALLEOLUS

*Side of leg & lateral malleolus
placed directly on bed*



*Side of leg & lateral malleolus
with New VenTOPedic Offloading*

