



# Fine Finish Sprayers

Graco's Complete Line of Fine Finish Sprayers and Accessories



HVLP



Airless



Air-Assisted Airless

PROVEN QUALITY. LEADING TECHNOLOGY.

# There is nothing like a Graco® sprayer.

Quality. Performance. Durability. Productivity. Graco fine finish sprayers deliver on all counts. Whether you're a contractor focused on small residential or a large contractor tackling the biggest projects every day, Graco offers you the best, most extensive line of spraying equipment to meet your needs. Most importantly, when you choose Graco, you know that you are choosing the highest quality product in the industry. You can take pride in the fact that Graco fine finish sprayers are designed, manufactured, and assembled right in the USA with imported global components. *We do!*



**What is the G4 Difference?** Simply put, it's Graco's commitment to provide you with the very best sprayers, backed by a solid reputation for proven quality, maximum performance, reliable warranty coverage and unmatched on-the-job productivity. Graco sprayers are designed to exceed the professional contractor's standards for quality and performance. Graco is the name to turn to today and as your business grows.

PROVEN **QUALITY**

MAXIMUM **PERFORMANCE**

INDUSTRY-LEADING **WARRANTY**

UNMATCHED **PRODUCTIVITY**

## WARRANTY SPRAY PROTECTION

We stand behind every piece of equipment we manufacture with the industry's strongest warranty. Spray with the confidence that you will probably never need to use Graco's warranty, but if you do... *we will be there.*

**LIFETIME DRIVE TRAIN WARRANTY\*** If the drive train fails from normal use, we'll replace it under warranty for the original owner for the life of the sprayer.

**LIFETIME ELECTRIC MOTOR WARRANTY\*** If the motor fails from normal use, we'll replace it under warranty for the original owner for the life of the sprayer.

**30-DAY "JUST ADD PAINT" REPLACEMENT GUARANTEE\*** *Dissatisfied?* Simply return the sprayer to the place you bought it within 30 days. They'll either exchange it for an identical sprayer or you can trade-up to a larger sprayer at an additional cost.



**3-YEAR WARRANTY** Coverage against defects in materials and workmanship on the entire sprayer, FinishPro compressors and turbine motors. Excludes FinishPro GX 19 and FinishPro II 295.

**DOWNTIME ELIMINATOR PROGRAM\*** Part needed for a warranty repair not in stock at your distributor? Get **FREE** next business day air freight delivery when distributor orders the part by 2 p.m. CST.

**CONVENIENT SERVICE** Graco offers more than 5,500 authorized distributor locations in North America and over 700 locations to administer warranty repair.

\*FinishPro II 395 PC and FinishPro II 595 PC Pro only. Does not include air compressor or turbine motors.

**PRODUCTS INCLUDE PATENTED AND PATENT PENDING TECHNOLOGIES.**

# Graco has the *right* fine finish sprayer for the job.

No matter your need, Graco has your *Total Solution* for your fine finishing applications. Whether it's a FinishPro HVLP, FinishPro GX Airless, or a FinishPro II Air-Assisted Airless sprayer, Graco's line of sprayers yield unmatched results in productivity and quality of finish.

## Fine Finishing Solutions Guide



### HVLP (HIGH-VOLUME LOW-PRESSURE)

- Spray small to medium jobs
- HVLP is built for extreme control jobs
- Standard, ProContractor and ProComp packages available – built for you!



### GX Airless

- Spray medium to large projects
- Fast startup and cleanup with 1.5 gallon hopper
- Compact, lightweight design
- Spray without thinning



### Air-Assisted Airless

- Large, long-duration projects that require large volumes of material
- Delivers both precision spraying and increased productivity
- Softer pattern, more control, higher transfer, and *less overspray*
- Ability to switch from air-assisted airless to pure airless spraying



CLASSIFICATION	FINISHPRO HVLP	FINISHPRO GX AIRLESS	FINISHPRO II AIR-ASSISTED AIRLESS
	<b>EXTREME CONTROL</b>	<b>HIGH PRODUCTIVITY</b>	
<b>TECHNOLOGY</b>	High volume, low pressure air results in fine professional finish with extreme control	High-pressured fluid results in fine quality finish with high production rate	High-pressured fluid combined with pressurized air results in fine quality finish with high production rate
<b>FINISH QUALITY</b>	Automotive Quality	Furniture/Cabinet Quality	
<b>SPRAY PATTERN SIZE</b>	1/8 in – 8 in Fan Width (0.3 cm – 20 cm)	2 in – 12 in Fan Width (4 cm – 30 cm)	
<b>TRANSFER EFFICIENCY</b> (% OF MATERIAL SPRAYED THAT ADHERES TO THE SURFACE VS. IN THE AIR)	85 – 95%	50 – 60%	70 – 80%
<b>TYPICAL APPLICATIONS</b>	<b>Small, Detailed Work</b> Railings, Shutters, Mantels, Tubs, Trim, Staircases, Cabinets, Furniture	<b>Medium – Large Surfaces</b> Doors, Trim, Cabinets, Molding, Garage Doors, Lockers, Decorative Steel Structures, and much more	
<b>CHARACTERISTICS</b>	<b>Most Control</b>	<b>Fast Application</b>	<b>Best Balance Between Speed and Quality</b>
<b>AVERAGE JOB SIZE</b>	Under 3 Gallons	Under 5 Gallons	Over 3 Gallons

# HVLP Technology

Engineered for superior atomization in the widest range of materials, Graco HVLPs are one of the coolest running, longest life HVLP sprayers on the market. Now available in Standard, ProContractor and ProComp models.

## Greater Control

### Choose level of control!

- ▶ Simplified flow control on Edge® II gun provides easy operation with exclusive patented technology



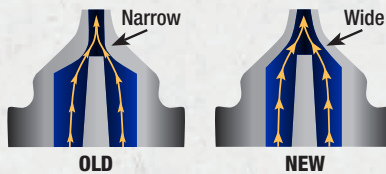
- ▶ EDGE II PLUS adds more control options! Pattern, airflow, and fluid flow controls – independent from each other



## Increased Productivity

- ▶ All Graco EDGE II guns have 4X more productivity – getting you on and off the job FASTER
- ▶ Exclusive, proprietary turbine design builds more pressure through each stage, resulting in more performance at the gun

**WORK 4X FASTER!**



## Cool Running Systems

- ▶ SmartStart™ feature allows system to only run when trigger is pulled – extending life and reducing heat\*
- ▶ Stainless Steel Tough Box design promotes efficient cooling
- ▶ Exclusive TurboControl feature limits heat by adjusting performance when coatings don't require full pressure

**SMART START**

(Patent Pending)



Adjust the TurboControl turbine speed to match the performance you require





## Reduced Noise

### Patent Pending SmartStart Turbine\*

**SMART START**

- ▶ Automatically shuts off when not in use – if you're not spraying, it's not running
- ▶ Reduces jobsite noise, resulting in less fatigue
- ▶ Automatic shut-off reduces heat and extends turbine life



## Easy Setup, Spray & Cleanup

- ▶ Convenient FlexLiner™ Bag System makes changing out materials fast and easy
- ▶ Finish jobs faster and move on to the next
- ▶ FlexLiner sprays in any direction to reach those tough spots – even upside down
- ▶ Quick Release Needles for fast cleaning and change out (Patented)



## Smaller & Lighter!

- ▶ Maximum jobsite portability – get jobs done faster and easier  
50% smaller size and 30% lighter than previous model
- ▶ Rugged, stainless steel enclosure protects the turbine on the job and during transport
- ▶ On-Board Gun & Cup Holder allows for easy transport and paint refills with less spills\*



## HVLP

# FinishPro HVLP 7.0/9.0

<b>STANDARD SERIES</b>	<b>PART #</b>
HVLP 7.0	17N263
HVLP 9.0	17N264

### INCLUDES

#### HVLP 7.0 STANDARD SERIES UNIT:

- EDGE II Gun
- 1 qt (1 l) Cup with FlexLiner™
- #3 Quick Release Fluid Set
- 20 ft (6 m) Super-Flex Air Hose

#### HVLP 9.0 UNIT STANDARD SERIES UNIT:

- EDGE II Gun
- 1 qt (1 l) Cup with FlexLiner
- #3 Quick Release Fluid Sets
- 20 ft (6 m) Super-Flex Air Hose

# FinishPro HVLP Sprayers

## EXCLUSIVE TURBOFORCE™ TECHNOLOGY

Graco HVLP sprayers are now available in several different models – Standard, ProContractor and ProComp. Engineered for superior atomization in the widest range of materials. Graco HVLPs are the coolest running, longest life HVLP sprayers on the market today.



## Standard Series

- ▶ Perfect for small jobs
- ▶ Offers everyday reliability
- ▶ Just the essential features you need

## Standard Features

### TurboForce™ Technology



- ▶ Exclusive, proprietary turbine design builds more pressure through each stage, resulting in more performance at the gun
- ▶ More air flow and air pressure means higher production with less thinning of material
- ▶ Generates less heat and provides longer turbine life

### Turbo Control System

- ▶ Adjust the TurboForce turbine speed to match the performance you require
- ▶ Reduces heat build up
- ▶ Runs quieter
- ▶ Extends turbine system life

### Standard Filtration System

- ▶ Washable filter extends motor life and ensures a quality finish
- ▶ No tools required to remove
- ▶ Outperforms foam filters commonly used on other HVLP sprayers



### EDGE II Gun

- ▶ Patented Single User Control combines air flow into one simple control
- ▶ 4X more productivity
- ▶ FlexLiner Bag System

### Super-Flex™ Air Hose

- ▶ 15% lighter weight than other leading brands for more control at the gun
- ▶ 20 ft length (Standard Series)
- ▶ 30 ft length (ProContractor Series)
- ▶ No tools needed to connect

### FlexLiner Bag System

- ▶ FlexLiner Paint Bag System replaces traditional material cups
- ▶ Spray at any angle with no adjustment – even upside down!



### Stainless Steel “Tough Box” Design

- ▶ Rugged, all steel enclosure protects the turbine on the job and during transport
- ▶ 50% smaller size
- ▶ 30% lighter





## ProContractor Series

- ▶ Ideal sprayer for small-to-medium jobs
- ▶ Offers unmatched life with SmartStart
- ▶ Loaded with features that offer convenience, control, and produce a superior spray finish



## ProComp Series

- ▶ Built to deliver for medium-to-large jobs
- ▶ Offers unmatched life with SmartStart
- ▶ Loaded with features that offer higher production, more control and produce a superior spray finish
- ▶ Double the fluid capacity



## HVLP

# FinishPro HVLP 7.0/9.0/9.5

PROCONTRACTOR SERIES	PART #
HVLP 7.0	17N265
HVLP 9.0	17N266
HVLP 9.5	17N267

### INCLUDES

#### HVLP 7.0 PROCONTRACTOR UNIT:

- EDGE II PLUS Gun
- 1 qt (1 l) Cup with FlexLiner
- #3 Quick Release Fluid Set
- 30 ft (9 m) Super-Flex Air Hose

#### HVLP 9.0 PROCONTRACTOR UNIT:

- EDGE II PLUS Gun
- 1 qt (1 l) Cup with FlexLiner
- #3 & #4 Quick Release Fluid Sets
- 30 ft (9 m) Super-Flex Air Hose

#### HVLP 9.5 PROCONTRACTOR UNIT:

- EDGE II PLUS Gun
- 1 qt (1 l) Cup with FlexLiner
- #3, #4 & #5 Quick Release Fluid Sets
- 30 ft (9 m) Super-Flex Air Hose
- 4 ft (1.2 m) Whip Hose

# FinishPro HVLP 9.5

PROCOMP SERIES	PART #
HVLP 9.5	17N269

#### HVLP 9.5 PROCOMP UNIT:

- EDGE II PLUS Gun
- 2 qt (1.9 l) Remote Cup and Shoulder Strap, 5 ft (1.5 m) material and air hose, FlexLiner Conversion Kit
- #3, #4, & #5 Quick Release Fluid Sets
- 30 ft (9 m) Super-Flex Air Hose
- 4 ft (1.2 m) Whip Hose

## Includes ALL Standard Series Features PLUS...

### SmartStart™ Turbine

- ▶ Automatically shuts off when not in use— if you're not spraying, it's not running
- ▶ Reduces jobsite noise, resulting in less fatigue
- ▶ Automatic shut-off reduces heat and extends turbine life



### TurboControl System with LED Display

- ▶ Adjust the TurboForce turbine speed to match the performance you require
- ▶ Reduces heat build up
- ▶ Runs quieter
- ▶ Extends turbine system life
- ▶ 50% longer hoses

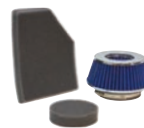


### EDGE II Plus Gun

- ▶ Ultimate control with independent user controls for material volume, air flow, and spray fan size
- ▶ 4X more productivity
- ▶ FlexLiner Bag System

### Industry Leading Dual Filtration System

- ▶ Automotive-grade filter has high performance filtration
- ▶ Outperforms foam and traditional paper filters used on most HVLP systems



### Utility Toolbox

- ▶ Separate Tool storage for extra needles and nozzles



### On-Board Gun and Cup Holder

- ▶ Holds gun when not in use
- ▶ Allows for easy paint refills with less spills



## HVLP

# FinishPro HVLP EDGE II GUN

**DESCRIPTION** PART #  
HVLP EDGE II GUN WITH FLEXLINER 17P481

**INCLUDES**  
• 1 qt (1 l) with FlexLiner Cup  
• #3 Quick Release Fluid Set

**DESCRIPTION** PART #  
HVLP EDGE II GUN WITH METAL CUP 17P653

**INCLUDES**  
• 1 qt (1 l) Metal Cup  
• #3 Quick Release Fluid Set

# Having the *right gun* can give you the competitive edge in today's market.

Maximize your spraying performance with the innovative HVLP EDGE II and EDGE II PLUS Guns. With cutting edge technology such as streamlined, intuitive gun controls, Quick Release fluid set and new exclusive air cap design that increases the fluid flow, the HVLP EDGE Gun will help you achieve the highest quality finish available in fine finish spraying.

## EDGE II Gun



### Single User Control Patented

- ▶ Combines material and air flow into one simple control
- ▶ Optimized to spray the majority of fine finish applications
- ▶ Quick adjustment with 360° rotation and indicator for repeatable spray setting



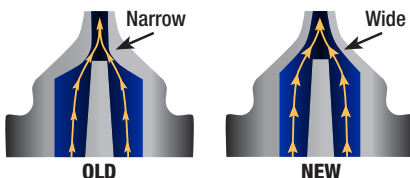
- ▶ One Simple control to adjust both material and airflow together



## 2017 Breakthrough Features found on ALL EDGE II & EDGE II PLUS Guns

### 4X More Productivity

- ▶ Get your job done in 25% the time
- ▶ New exclusive Graco air cap design increases the fluid flow in every needle by 4X



### FlexLiner Bag System

For the first time, spray in any direction – only with Graco's HVLP sprayers with FlexLiner Technology.

- ▶ FlexLiner Paint Bag System replaces traditional material cups for maintenance free operation
- ▶ Spray at any angle with no adjustment – even upside down
- ▶ Easy Cleanup
  - Reuse liner or toss, it's your choice
  - No suction tube to clean





## HVLP

# FinishPro HVLP EDGE II PLUS GUN



## EDGE II Plus Gun

### Ultimate Control

- ▶ Independent User Controls
  - Material Volume Control
  - Air Flow Control
  - Spray Fan Size Control
- ▶ Quick adjustment with full 360° degree rotation



- ▶ Separate Material Volume and Air Controls



- ▶ Turn to adjust pattern height

DESCRIPTION	PART #
HVLP EDGE II PLUS GUN WITH FLEXLINER	17P483

- INCLUDES**
- 1 qt (1 l) FlexLiner Cup
  - #3 Quick Release Fluid Set

DESCRIPTION	PART #
HVLP EDGE II PLUS GUN WITH METAL CUP	17P484

- INCLUDES**
- 1 qt (1 l) Metal Cup
  - #3 Quick Release Fluid Set

DESCRIPTION	PART #
HVLP EDGE II PLUS GUN PROCOMP	17P654

- INCLUDES**
- #3 Quick Release Fluid Set

### Quick Release Needles Patented

- ▶ Change out needles from the front of the gun with just a click
- ▶ Easy to change, easy to clean – no tools needed



1. Remove front air cap and nozzle.
2. Slide trigger lever to release needle.
3. Pull needle out.



### Ergonomic Gun Handle

- ▶ Lightweight and comfortable while spraying
- ▶ Form-fitted handle stays cool to the touch for extended use

### EasyGlide™

- ▶ 75% lighter trigger pull than the competition
- ▶ 2-finger design gives ultimate control while spraying

### Adjustable Air Cap

- ▶ 3-position rotation quickly changes spray pattern – horizontal, vertical, round



**ROUND PATTERN**  
1/8 in – 4 in (0.3 cm – 10 cm) Diameter



**HORIZONTAL FAN**  
1 in – 8 in (2.5 cm – 20 cm) Width



**VERTICAL FAN**  
1 in – 8 in (2.5 cm – 20 cm) Width



# HVLP Accessories

## FINISHPRO HVLP SPRAYERS

### ARTISAN AIR VALVE KIT – 17S192

- ▶ Provides the ultimate air control for specialty, multi-spec applications
- ▶ Plugs directly into back of EDGE II gun

### HVLP EDGE II GUN EXTENSION, 12 in (30 cm) – 17P491

- ▶ Attaches directly to the HVLP EDGE II gun for extended reach and spraying hard-to-reach areas
- ▶ Ability to spray in any direction—360° rotation

### QUICK RELEASE FLUID SETS

- ▶ For HVLP EDGE II guns only
- ▶ Change out needles from the front of the gun with just a click

	<i>Needle:</i>	<i>Size:</i>	<i>Material:</i>
17P485	#2	.032 in (0.8 mm)	Ultra fine finish with inks, dyes, non-wiping stains, automotive finishes
17P486	#3	.051 in (1.3 mm)	Fine finish lacquers, stains, enamels, epoxies, urethane, varnish
17P487	#4	.071 in (1.8 mm)	High output with enamels, epoxies, urethane, varnish, primers
17P488	#5	.087 in (2.2 mm)	Higher output with enamels, epoxies, urethane, varnish, primers, latex, multi-spec
17P489	#6	.098 in (2.5 mm)	Higher output with enamels, epoxies, urethane, varnish, primers, latex, multi-spec
17P490	#7	.115 in (2.8 mm)	Highest output with enamels, epoxies, urethane, varnish, primers, latex, and multi-spec

### HVLP CUPS, POTS AND LINERS

17R462	32 oz (.94 l) FlexLiner HVLP Assembly (Cup, Liner, Lid, Cap)
17A226	32 oz (.94 l) FlexLiner Bags - 3 pack
17P212	32 oz (.94 l) FlexLiner Bags - 25 pack
17S146	HVLP FlexLiner Cap
244130	1 qt (.9 l) Siphon Metal Cup
17S115	1/2 qt (.47 l) Cup over kit - Edge II Only
17S116	1/2 qt (.47 l) Cup over kit - Edge II PLUS Only
287819	2 qt (1.9 l) Cup with Lid and 5 ft (1.5 m) Material and Air Hose—for use with ProComp Sprayer
112491	2 qt (1.9 l) Cup Liners (40-pack)

### FILTERS AND STRAINERS

17R296	Standard Series Filter Kit
17R298	ProContractor & ProComp Series Filter Kit
240267	Cone Material Strainers (3-pack)

### SUPER-FLEX HOSES AND FITTINGS

- ▶ Over 15% lighter weight and increased hose flexibility
- ▶ Connect hoses together for a maximum of 60 ft (18.2 m) extended length

17R299	Super-Flex Whip Air Hose, 4 ft (1.2 m)
17R300	Super-Flex Air Hose, 20 ft (6.1 m)
257159	Super-Flex Air Hose, 30 ft (9 m)
241423	Super-Flex Material and Air Hose Assembly with Quick Connects, 30 ft (9 m) Use with Remote Gun (not included)
240476	Material Hose, 3/8 in x 30 ft (4.8 mm x 9 m)—Use with Remote Gun (not included)
17R301	Quick Disconnect Ball Valve (Air Hose to Gun)
240282	Quick Disconnect Fitting (Air Hose to Sprayer)
240069	2 Gun Y Connector (f/m/m)

### MAINTENANCE AND REPAIR KITS

256960	HVLP EDGE II Gun Packing Repair Kit
17P708	HVLP EDGE II Gun Full Seal Kit
17P709	HVLP EDGE II Gun Air Cap
256957	Quick Clean Check Valve (Full Assembly)
256956	Quick Clean Check Valve Repair Kit (3-Pack)
256953	Cleaning Brush Kit
256954	Deluxe Cleaning Kit—Includes: Detailed Brushes and Picks
M71425	2 qt (1.9 l) Remote Cup Gaskets (5-pack)



# RAC X™ FF LP SwitchTips™

Breakthrough LOW PRESSURE SmartTip™ Technology, engineered to deliver the industry's best finish!

Featuring the patented Graco RAC X Tip with **SmartTip Technology** and exclusive internal tip geometry which delivers the industry's best finish at the lowest spray pressure.



## SMART COMBINATION

- ▶ **SPRAYS AT UP TO 50% LOWER PRESSURE**
- ▶ **LESS OVERSPRAY**
- ▶ **EASIEST PATTERN OVERLAP**
- ▶ **REDUCES PREP & CLEANUP**
- ▶ **UP TO 2X LIFE**



**SmartTip Technology** is designed to work with Graco's exclusive **SmartControl™ Pressure Management System** to deliver a superior spray fan without pressure fluctuations – at all spraying pressures.

**SMARTCONTROL™**

**INDUSTRY-FIRST!  
NOW AVAILABLE AT YOUR LOCAL  
GRACO DISTRIBUTOR**



# The Next Generation of No-Tools Pump Removal *Faster and Easier than ever!*

## ProXChange Power-Piston Pump

- ▶ **Fast and Easy** on-the-job Pump Replacement System
- ▶ **Exceptional durability** and long life piston pump

Being able to quickly repair a pump on the job site can be the difference between a productive day of spraying and one spent waiting on replacement parts or behind the wheel taking your sprayer to be serviced. Thanks to the ProXChange Pump Repair System, (available on the FinishPro GX 19), Graco makes pump repairs fast and easy. In 4 simple steps, you can remove and replace the pump cartridge (available at many of Graco's Distributors). No more time wasted or money lost to labor charges on pump repairs—with a spare cartridge kit on hand, you'll never have a down day.



- ▶ **Eliminates labor repair costs and drive time expenses**
- ▶ **Quickly and easily repair the pump**
- ▶ **Pinless design needs no tools**



## ProX™ Pump Cartridge

- ▶ **Exclusive, lifetime lubricated wiper pad** for maintenance free operation
- ▶ **Modular pump components** for easy maintenance



Remove hopper



Unlatch and lift door



Remove pump



Replace cartridge

## Airless

# FinishPro GX 19

The fast, portable and affordable solution for small finishing jobs that every finishing contractor encounters.

DESCRIPTION	PART #
FINISHPRO GX 19	17F924
SPECIFICATIONS	
MAX TIP SIZE:	0.019
MAX GPM (LPM):	0.38 (1.44)
MAX PSI (BAR):	3000 (227)
MOTOR:	1/2 HP DC
WEIGHT LB (KG):	27 (12.3)

#### INCLUDES

- 3/16 in x 25 ft BlueMax™ II Hose
- FTx Gun with two-finger trigger
- RAC X FF LP SwitchTip (FFLP210)
- 100-Mesh Gun Filter
- Fluid Pressure Gauge

**Sprays  
Most  
Solvent-based  
Materials**

**Perfect for a dedicated  
lacquer sprayer!**

## Features

**PROXCHANGE**



## Features



### Precision-Cut RAC X FF LP SwitchTip

- ▶ Sprays at lower pressures with less overspray
- ▶ Pre-orifice design produces a perfect airless finish
- ▶ Up to 2X life
- ▶ Finer atomization and soft edges for easier overlapping
- ▶ Reduces prep and cleanup
- ▶ Includes solvent seal for hot solvents

### 1.5 Gallon Hopper

- ▶ Ideal for spraying small amounts of material
- ▶ Molded design easily attaches to sprayer without any tools
- ▶ Lid included for spill-proof portability
- ▶ Smooth inside surface cleans up fast—solvent resistant
- ▶ Drain line hook ensures the drain tube stays where you want it—*never mess with a drain line again!*

### ProX Power-Piston Pump

- ▶ Exceptional durability and long life piston pump
- ▶ Exclusive, lifetime lubricated wiper pad for maintenance free operation
- ▶ Modular pump components for easy maintenance

### FTx™ Spray Gun

- ▶ Form fitted handle provides maximum control and comfort
- ▶ Easy Out™ 100 mesh gun filter installed to minimize tip clogs and protect finish
- ▶ EasyGlide Swivel provides maximum flexibility for effortless hose management

### Extremely Portable

- ▶ Lighter than any competitive system
- ▶ Easy Carry Handle makes transportation easy
- ▶ Lid prevents splashes and spills while carrying



Introducing the latest high-performance solution for fine finish spraying—FinishPro II Air-Assisted Airless sprayers that deliver an HVLP-quality finish at the speed of an airless sprayer. With this technology, material is delivered to the gun at lower pressure than traditional airless (500-1500 psi vs. 1500-3000 psi) and is partially atomized through a small tip. Full atomization is achieved by adding a small amount of air (5-35 psi) to the edges of the spray fan, resulting in a softer pattern, more control, higher transfer, and less overspray. Only Graco delivers industry-leading features along with proven quality and unmatched performance in a portable, self-contained, air-assisted airless system.

# Air-Assisted Airless Technology

**G40 Gun** Graco's G40 gun is the premier Air-Assisted Airless gun in the industry. From its ultra-light trigger pull to its ergonomic fit, it's a gun by which all others are measured.

- ▶ 8 air ports inject air closer to the tip, resulting in a softer, more consistent spray pattern
- ▶ Integrated filter minimizes tip clogs
- ▶ Air adjustment valve at the gun allows "on the fly" adjustments to maximize performance
- ▶ Flat tip conversion kit accepts industrial-grade flat tips that deliver extremely high performance in low-viscosity, light-bodied materials (Standard on the FinishPro II 395 PC and 595 PC Pro; not included on the FinishPro II 295.)



## RAC X FF LP SwitchTip

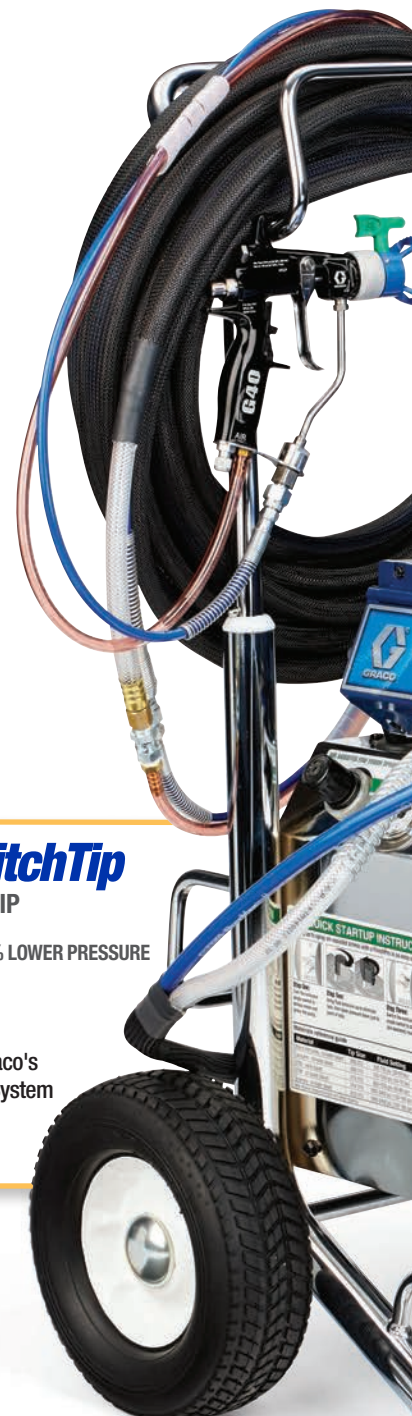
FINE FINISH LOW PRESSURE TIP



Patented Technology

SPRAY AT UP TO 50% LOWER PRESSURE  
LESS OVERSPRAY  
UP TO 2X LIFE

SmartTip Technology is designed to work with Graco's exclusive SmartControl™ Pressure Management System to deliver a superior spray fan without pressure fluctuations – at all spraying pressures!



**Super-Flex Hose Set** By increasing flexibility and maneuverability, Graco's Super Flex Hose Set enables you to work in tight confines and helps you increase the quality of finish you're laying down.

- ▶ The flexibility to get into tight spaces—focus on the task, not the tool!
- ▶ Extremely lightweight in hand, which reduces fatigue
- ▶ Connects directly to the gun for maximum flexibility
- ▶ Flex Wrap hose skin protects from material buildup and increases hose durability

**SmartComp™** Available on the FinishPro II 395 PC and 595 PC Pro, Graco's SmartComp delivers a superior finish while extending the life of the sprayer. On machine startup, the compressor charges the SmartComp system in 20 seconds. When the trigger is pulled, SmartComp then feeds the gun until the compressor reaches full output, resulting in zero lead/lag in air delivery to the gun. When the trigger is released, SmartComp shuts off the compressor after 5 seconds.

- ▶ Compressor is activated by the gun trigger— if you're not spraying, it's not running!
- ▶ Delivers instant air to the gun with zero lag
- ▶ Reduces jobsite noise, resulting in less fatigue
- ▶ Automatic shut-off reduces moisture entering the system and extends compressor life



## Two Sprayers in One!

With just the flip of a switch, change from air-assisted to airless spraying modes for ultimate versatility.

### Features



#### ProConnect™

Graco's exclusive pump removal and replacement system, available on the FinishPro II 395 PC and 595 PC Pro, allows for fast jobsite swapping of the pump (see page 16 for complete details).

- ▶ Eliminates labor repair costs and drive time expenses
- ▶ Quickly swap out the pump for a spare in under a minute
- ▶ Pinless design eliminates the chance of losing parts during the change-out process

#### High-Output On-Board Air Compressor

All FinishPro II sprayers come complete with on-board air compressors, making them ideal for on-site finish jobs.

- ▶ Delivers 3.2 cfm at 35 psi—enough air to break up the heaviest materials
- ▶ Exclusive Pressure Unloader results in quieter operation
- ▶ Cooling coil reduces air temperature, extending the life of critical components and providing safer operator handling

**Graco's Proven Piston Pump** All FinishPro II sprayers come with piston pumps for unmatched performance. The FinishPro II 395 PC and 595 PC Pro come with Endurance™ Pumps with V-Max Blue™ packings and Chromex™ rods for extended life.

- ▶ Allows for consistent priming and pumping of even the heaviest materials without thinning
- ▶ QuikAccess™ intake valve makes cleaning or clearing debris easy—all you need is a hammer

## Air-Assisted

# FinishPro II 295

An entry-level air-assisted model ideal for occasional finishers, small cabinet shops and enthusiast woodworkers, the FinishPro II 295 PC delivers a high quality finish at a higher production rate than HVLP. Spray light to heavy material right out of the pail!

DESCRIPTION	PART #
FINISHPRO II 295	24U060

### SPECIFICATIONS

MAX TIP SIZE:	0.019
MAX GPM (LPM):	0.34 (1.3)
MAX PSI (BAR):	3000 (207)
MOTOR:	1/2 HP DC
WEIGHT LB (KG):	80 (36)

### INCLUDES

- G40 Gun with RAC X Tip
- 25 ft Super-Flex Hose Set
  - 1/4 in x 25 ft (6.4 mm x 7.6 m) Fluid Hose
  - 1/8 in x 6 ft (3.2 mm x 1.8 m) Fluid Whip Hose
  - 3/8 in x 25 ft (9.5 mm x 7.6 m) Air Hose
  - 1/4 in x 6 ft (6.4 mm x 1.8 m) Air Whip Hose
- RAC X FFLP210 SwitchTip
- RAC X LTX515 SwitchTip
- 100 Mesh Gun Filter



## Features



### Precision-Cut RAC X FFLP SwitchTip

- ▶ Sprays at lower pressures with less overspray
- ▶ Pre-orifice design produces a perfect airless finish
- ▶ Up to 2X life
- ▶ Finer atomization and soft edges for easier overlapping
- ▶ Reduces prep and cleanup
- ▶ Includes solvent seal for hot solvents

### Two Sprayers in One!

- ▶ Air-assisted with just the flip of a switch—depending on what's best for the application
- ▶ Select air-assisted mode for fine finishing
- ▶ Select airless mode for priming and painting walls

### Super-Flex Whip Hose

- ▶ Light, flexible whip hose improves control in tight spaces
- ▶ Flex Wrap hose skin protects from material accumulation and increases durability

### Improved G40 Spray Gun

- ▶ An industrial-grade air-assisted spray gun that delivers superior finishing results
- ▶ Integrated air valve improves gun handling

### Self-Contained and Portable

- ▶ One plug runs the entire unit, simplifying jobsite operation

### Single Selector Switch

- ▶ Simple, color-coded labels easily identify airless and air-assisted modes

### Quiet On-Board Air Compressor

- ▶ Graco designed and manufactured
- ▶ Compact size that's optimized for air-assisted application



# Finish Every Job, Every Day

## with Graco's ProConnect and Endurance Now™ Program

### ProConnect

- ▶ **Fast and Easy** on-the-job Pump Replacement System
- ▶ Available on small and midsize electric sprayers

Being able to quickly change a pump on the jobsite can be the difference between a productive day of spraying and one spent waiting on replacement parts. Thanks to the ProConnect Pump Removal System (available on the FinishPro II 395 PC and FinishPro II 595 PC Pro), Graco makes pump swaps fast and easy. In 3 simple steps and in less than 1 minute, you can remove and replace the pump on select Graco's sprayers with a new replacement pump (available at many of Graco's Distributors).



- ▶ **Eliminates labor repair costs and drive time expenses**
- ▶ **Quickly and easily replace the pump**
- ▶ **Pinless design needs no tools**

### Endurance Pump

- ▶ The most rugged and reliable pump on the market today—*lasts 2 times longer than the next leading brand*
- ▶ Long-life V-Max Blue™ packings, Chromex™ rod and hardened stainless steel cylinder
- ▶ QuikAccess™ intake valve requires only a hammer to access the intake ball to clear debris



Loosen the clamping nut



Open door and remove pump



Remove hose and suction tube

#### Fast Pump Removal

- ▶ 1-minute jobsite replacement
- ▶ Keeps you spraying instead of waiting for service
- ▶ No pins or parts to lose!

## Air-Assisted

# FinishPro II 395 PC

With features that make a great sprayer even better, the FinishPro II 395 PC is Graco's premier solution to fine finishing. It delivers a high-quality finish at a high production rate and can handle the most challenging materials.

DESCRIPTION	PART #
FINISHPRO II 395 PC	17C417
<b>SPECIFICATIONS</b>	
MAX TIP SIZE:	0.021
MAX GPM (LPM):	0.43 (1.6)
MAX PSI (BAR):	3300 (228)
MOTOR:	7/8 HP TEFC DC
WEIGHT LB (KG):	107 (49)

### INCLUDES

- G40 Gun Air-Assisted Airless Gun
- 50 ft Super-Flex Hose Set
  - 1/4 in x 50 ft (6.4 mm x 15.2 m) Fluid Hose
  - 1/8 in x 6 ft (3.2 mm x 1.8 m) Fluid Whip Hose
  - 3/8 in x 50 ft (9.5 mm x 15.2 m) Air Hose
  - 1/4 in x 6 ft (6.4 mm x 1.8 m) Air Whip Hose
- RAC X FFLP210 SwitchTip
- RAC X LTX517 SwitchTip
- Precision Cut Fine Finish Flat Tip Kit
- AAM309 Flat Tip
- 100 Mesh Gun Filter



## Features



## Features

### SmartComp

- ▶ Automatically shuts off when not in use—*if you're not spraying, it's not running*
- ▶ Reduces jobsite noise, resulting in less fatigue
- ▶ Automatic shut-off reduces moisture entering the system
- ▶ Extends compressor life

### SmartControl 1.0

- ▶ Advanced technology delivers a consistent spray fan without pressure fluctuations at all spraying pressures
- ▶ Digital display accurately shows spraying pressure

### Two Sprayers in One!

- ▶ Air-assisted with just the flip of a switch—depending on what's best for the application
- ▶ Select air-assisted mode for fine finishing
- ▶ Select airless mode for priming and painting walls

### Single Selector Switch

- ▶ Simple, color-coded labels easily identify airless and air-assisted modes



### Precision-Cut RAC X FF LP SwitchTip

- ▶ Sprays at lower pressures with less overspray
- ▶ Pre-orifice design produces a perfect airless finish
- ▶ Up to 2X life
- ▶ Finer atomization and soft edges for easier overlapping
- ▶ Reduces prep and cleanup
- ▶ Includes solvent seal for hot solvents

### Super-Flex Whip Hose

- ▶ Light, flexible whip hose improves control in tight spaces
- ▶ Flex Wrap hose skin protects from material accumulation and increases durability

### Improved G40 Spray Gun

- ▶ An industrial-grade air-assisted spray gun that delivers superior finishing results
- ▶ Integrated air valve improves gun handling

### Self-Contained and Portable

- ▶ One plug runs the entire unit, simplifying jobsite operation

## Air-Assisted

# FinishPro II 595 PC Pro

The most versatile FinishPro II sprayer ever, with more performance to get the job done faster, the FinishPro II 595 PC Pro is ideal for large commercial and industrial jobs.

DESCRIPTION	PART #
FINISHPRO II 595 PC Pro	17C424
<b>SPECIFICATIONS</b>	
MAX TIP SIZE:	0.027
MAX GPM (LPM):	0.7 (2.6)
MAX PSI (BAR):	3300 (228)
MOTOR:	1.4 HP Brushless DC
WEIGHT:	108 (49)

### INCLUDES

- G40 Air-Assisted Airless Gun
- 50 ft Super-Flex Hose Set
  - 1/4 in x 50 ft (6.4 mm x 15.2 m) Fluid Hose
  - 1/8 in x 6 ft (3.2 mm x 1.8 m) Fluid Whip Hose
  - 3/8 in x 50 ft (9.5 mm x 15.2 m) Air Hose
  - 1/4 in x 6 ft (6.4 mm x 1.8 m) Air Whip Hose
- RAC X FFLP210 SwitchTip
- RAC X LTX517 SwitchTip
- Precision Cut Fine Finish Flat Tip Kit
- AAM309 Flat Tip
- Airless Gun/Hose Kit
- 100 Mesh Gun Filter



## Features



## Features

### More Flow = More Productivity

- ▶ The highest performing air-assisted airless sprayer!

### SmartComp

- ▶ Automatically shuts off when not in use—if you're not spraying, it's not running!
- ▶ Reduces jobsite noise, resulting in less fatigue
- ▶ Automatic shut-off reduces moisture entering the system
- ▶ Extends compressor life

### SmartControl 2.5

- ▶ Advanced technology delivers a consistent spray fan without pressure fluctuations at all spraying pressures
- ▶ Ideal for smaller tips commonly used for fine finish work
- ▶ Digital display accurately shows spraying pressure

### Two Sprayers in One!

- ▶ Air-assisted with just the flip of a switch—depending on what's best for the application
- ▶ Select air-assisted mode for fine finishing
- ▶ Select airless mode for priming and painting walls

### Single Selector Switch

- ▶ Simple, color-coded labels easily identify airless and air-assisted modes



### Precision-Cut RAC X FF LP SwitchTip

- ▶ Sprays at lower pressures with less overspray
- ▶ Pre-orifice design produces a perfect airless finish
- ▶ Up to 2X life
- ▶ Finer atomization and soft edges for easier overlapping
- ▶ Reduces prep and cleanup
- ▶ Includes solvent seal for hot solvents

### Super-Flex Whip Hose

- ▶ Light, flexible whip hose improves control in tight spaces
- ▶ Flex Wrap hose skin protects from material accumulation and increases durability

### Improved G40 Spray Gun

- ▶ An industrial-grade air-assisted spray gun that delivers superior finishing results
- ▶ Integrated air valve improves gun handling

### Self-Contained and Portable

- ▶ One plug runs the entire unit, simplifying jobsite operation

### FastFlush™ Cleaning System

- ▶ Dramatically decreases cleaning time
- ▶ High flow and faster cleaning—up to 4X faster using only half the water!

### Gun and Hose Kit Included

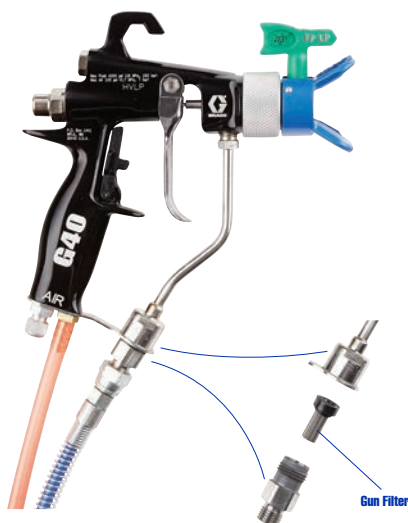
- ▶ Airless gun and hose kit are in the box for increased versatility

## Air-Assisted

# G40

## Air-Assisted Airless Gun

Graco's G40 gun is the premier Air-Assisted Airless gun in the industry and comes standard with all FinishPro II sprayers. From its ultra-light trigger pull to the ergonomic fit, it truly is a gun by which all other guns are measured.



## Features

### Industrial Quality

- ▶ An industrial-grade finishing gun, built for years of uninterrupted service

### Lightweight, Ergonomic Design

- ▶ Becomes an extension of your hand, allowing you to focus on the finishing task at hand

### RAC X Air Cap

- ▶ Accepts RAC X SwitchTips for quick and easy tip clog clean-out
- ▶ Eight air ports inject air closer to the tip, resulting in a softer, more consistent spray pattern

### Gun Filter

- ▶ Integrated into the gun to minimize tip clogs
- ▶ Fine mesh results in a superior finish

### Air Adjustment Valve

- ▶ Air control at the gun allows "on the fly" adjustments to maximize performance

### Precision Cut Fine Finish Flat Tip Kit

- ▶ Air cap utilizes flat tips
- ▶ Extremely high performance in low-viscosity, light-bodied materials (Standard on the FinishPro II 395 PC and 595 PC Pro; not included on the FinishPro II 295.)

## Inline Air Moisture Filter

These disposable filters contain a desiccant material that removes 100% of the moisture from air supplied to the gun by the compressor. This is particularly important when spraying solvent-based finishes.

# Tip Technology

Only Graco gives you the ability to outfit your air-assisted airless sprayer to suit your needs. Whether you need fast high-production spraying or a smooth HVLP-like finish, Graco has you covered.



## RAC X TIPS VS. PRECISION-CUT FLAT TIPS

	RAC X FFLP SWITCHTIPS	PRECISION-CUT FINE FINISH FLAT TIPS
<b>CHARACTERISTICS:</b>	<p>The exclusive internal tip geometry of Graco's RAC X Fine Finish Low Pressure Tips deliver the industry's best finish at the lowest airless spray pressure.</p> <ul style="list-style-type: none"> <li>• Sprays At Up To 50% Lower Pressure</li> <li>• Easiest Pattern Overlap</li> <li>• Less Overspray</li> <li>• Up To 2X Life</li> </ul>	<p>The Precision-Cut Flat Tip is designed with stains and lacquers in mind and produces the best atomization for extremely smooth finishes for furniture and similar applications.</p> <ul style="list-style-type: none"> <li>• Delivers softest spray fan</li> <li>• Offers fan width control</li> <li>• Closer to HVLP quality</li> <li>• Zero air cap build up</li> </ul>
<b>RECOMMENDED USES:</b>	When speed and finish quality are equally important	Where finish quality is the #1 requirement

# Accessories

## FINISHPRO AIRLESS

### PRECISION-CUT FLAT TIPS

FAN WIDTH	ORIFICE SIZE – INCHES						
	In (mm)	.007	.009	.011	.013	.015	.017
2-4 (51 - 102)	107	109	111				
4-6 (102 - 152)	207	209	211	213	215	217	
6-8 (152 - 203)	307	309	311	313	315	317	
8-10 (203 - 254)	407	409	411	413	415	417	
10-12 (254 - 305)		509	511	513	515	517	
12-14 (305 - 356)			611	613	615	617	
Flow Rate (gpm)	5.2	9.1	13.0	16.9	22.0	28.5	
Flow Rate (lpm)	.15	.27	.40	.50	.70	.85	

Water @ 1000 psi (70 bar, 7.0 MPa) - paints with a higher viscosity will decrease the flow rate. Order desired tip (part no. AAMxxx) from chart above. Example: for a tip with a 0.009 orifice and a 6 in (250 mm) pattern, order AAM309.

### RAC X FFLP SWITCH TIPS (Fine Finish Low Pressure)

FAN WIDTH	ORIFICE SIZE – INCHES							
	In (mm)	.008	.010	.012	.014	.016	.018	.020
2-4 (51-102)	108	110	112					
4-6 (102-152)	208	210	212	214				
6-8 (152-203)	308	310	312	314				
8-10 (203-254)		410	412	414				
10-12 (254-305)		510	512	514	516	518	520	
12-14 (305-356)					616	618	620	
Flow Rate (gpm)	.07	.11	.15	.21	.27	.35	.43	
Flow Rate (lpm)	.26	.41	.59	.80	1.04	1.32	1.63	

Water @ 2000 psi (138 bar, 13.8 MPa); paints with a higher viscosity will decrease the flow rate. Example: For a tip with a .010 orifice and a 8 in (203 mm) pattern, order FFLP410.

# Air-Assisted Accessories

## FINISHPRO AIR-ASSISTED AIRLESS

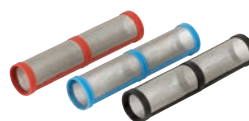
### FLUID AND AIR HOSES

- 262929 G40 Air-Assisted Airless Gun
- 24U891 G40 Gun with RAC X Tip and 50 ft Super-Flex Hose Set
- 24U578 25 ft (7.6 m) Super-Flex Fluid and Air Hose Set
- 24U579 50 ft (15.2 m) Super-Flex Fluid and Air Hose Set
- 278750 1/8 in x 6 ft (3.2 mm x 1.8 m) Super-Flex Whip-Fluid
- 278751 1/4 in x 6 ft (6.4 mm x 1.8 m) Super-Flex Whip-Air
- 24U577 50 ft (15.2 m) Flex Wrap Hose Protector
- 24U576 25 ft (7.6 m) Flex Wrap Hose Protector
- 214698 3/16 in x 25 ft (4.76 mm x 7.6m) BlueMax II Hose



### FILTERS AND STRAINERS

- 224454 G40 Gun Filter, 60 Mesh (5-pack)
- 224453 G40 Gun Filter, 100 Mesh (5-pack)
- 257129 Contractor™ II & FTx Gun Filter, 60 Mesh (1 per card)
- 287033 Contractor II & FTx Gun Filter, 100 Mesh (1 per card)
- 257130 Contractor II & FTx Gun Filter, 200 Mesh (1 per card)
- 257094 Manifold Filter, 40 Mesh
- 246384 Easy Out Manifold Filter, Black 60 Mesh
- 246382 Easy Out Manifold Filter, Blue 100 Mesh
- 246383 Easy Out Manifold Filter, Red 200 Mesh
- 246385 Pump Inlet Strainer
- 127465 Disposable, Inline Air Moisture Filter (Single)
- 24U981 Disposable, Inline Air Moisture Filter (5-pack)
- 24U982 Disposable, Inline Air Moisture Filter (25-pack)



### MAINTENANCE AND REPAIR KITS


- 17H171 Hopper Assembly 1.5 gal (5.7 l) molded hopper attaches to sprayer in place of inlet suction hose. Ideal for spraying small amounts of material. Lid included. Smooth inside cleans up fast.
- 288514 Precision Cut Flat Tip Conversion Kit—G40 Gun
- 289108 Severe Solvents Suction Set (For use on FinishPro II 395 PC and 595 PC Pro sprayers only)
- 288839 G40 RAC X Air Cap

### PUMP REPAIR PARTS

- 17C487 Replacement Pump—Replace pump on the job (For use on FinishPro II 395 PC and 595 PC Pro sprayers only.)
- 24Y472 ProXChange Repair Kit (For use on FinishPro GX 19 sprayer only.)



# Fine Finish Sprayer Specifications

		STANDARD SERIES		PROCONTRACTOR SERIES			PROCOMP SERIES
		FINISHPRO HVLP 7.0	FINISHPRO HVLP 9.0	FINISHPRO HVLP 7.0	FINISHPRO HVLP 9.0	FINISHPRO HVLP 9.5	FINISHPRO HVLP 9.5
		EXTREME CONTROL					
SPECIFICATIONS	Technology	High Volume Low Pressure	High Volume Low Pressure	High Volume Low Pressure	High Volume Low Pressure	High Volume Low Pressure	High Volume Low Pressure
	Maximum psi (bar)	7.0 (0.48)	9.0 (0.62)	7.0 (0.48)	9.0 (0.62)	9.5 (0.65)	9.5 (0.65)
	Turbine Stages	3-Stage	4-Stage	3-Stage	4-Stage	5-Stage	5-Stage
	Cup qt (l)	1 (1)	1 (1)	1 (1)	1 (1)	1 (1)	2 (1.9)
	Weight lb (kg)	18 (8.1)	19 (8.6)	23 (10.4)	24 (10.8)	26 (11.7)	30 (13.6)
	Max Hose	40 ft (12 m)	40 ft (12 m)	60 ft (18 m)	60 ft (18 m)	60 ft (18 m)	60 ft (18 m)
	Air Ball Valve Included	No	No	Yes	Yes	Yes	Yes
	Artisan Air Valve Installed	No	No	Yes	Yes	Yes	Yes
							
MODEL	Part Number	17N263	17N264	17N265	17N266	17N267	17N269
INCLUDES	Gun	EDGE II	EDGE II	EDGE II PLUS	EDGE II PLUS	EDGE II PLUS	EDGE II PLUS
	Hose	20 ft (6m) Super-Flex Air Hose	20 ft (6m) Super-Flex Air Hose	30 ft (9m) Super-Flex Air Hose	30 ft (9m) Super-Flex Air Hose	30 ft (9m) Super-Flex Air Hose & Whip Hose	30 ft (9m) Super-Flex Air Hose & Whip Hose
	Quick Release Fluid Set	#3 (0.051 in, 1.3 mm)	#3 (0.051 in, 1.3 mm)	#3 (.051 in, 1.3 mm)	#3 (.051 in, 1.3 mm) #4 (.071 in, 1.8 mm)	#3 (0.051 in, 1.3 mm) #4 (0.071 in, 1.8 mm) #5 (0.087 in, 2.2 mm)	#3 (0.051 in, 1.3 mm) #4 (0.071 in, 1.8 mm) #5 (0.087 in, 2.2 mm)
	Filter	Foam	Foam	Automotive main filter	Automotive main filter	Automotive main filter	Automotive main filter
WEAR PARTS	Gun Maintenance Kit	256960	256960	256960	256960	256960	256960
	Gun Repair Kit	17P708	17P708	17P708	17P708	17P708	17P708
MANUAL	Turbine	3A4967	3A4967	3A4967	3A4967	3A4967	3A4967
	Gun	3A4980	3A4980	3A4980	3A4980	3A4980	3A4980

		<b>FINISHPRO GX 19</b>	<b>FINISHPRO II 295</b>	<b>FINISHPRO II 395 PC</b>	<b>FINISHPRO II 595 PC PRO</b>
		<b>HIGH PRODUCTIVITY</b>			
<b>SPECIFICATIONS</b>	Technology	Airless	Air-Assisted Airless	Air-Assisted Airless	Air-Assisted Airless
	Flow gpm (lpm)	0.38 (1.44)	0.38 (1.44)	0.47 (1.78)	0.7 (2.6)
	Max Tip - Airless	0.019	0.019	0.021	0.027
	Weight lb (kg)	27 (12.3)	80 (36.3)	107 (48.5)	108 (49.0)
	Motor hp (dc)	1/2	1/2	7/8 TEFC	1.4 Brushless
	Hose Wrap	N/A	Flex Wrap	Flex Wrap	Flex Wrap
	Compressor Output	N/A	3.2 cfm at 35 psi	3.2 cfm at 35 psi	3.2 cfm at 35 psi
					
<b>MODEL</b>	Part Number	17F924	24U060	17C417	17C424
<b>INCLUDES</b>	Filter(s)	100 mesh gun filter	100 mesh gun filter	100 mesh gun filter 100 mesh unit filter	100 mesh gun filter 100 mesh unit filter
	Tips	RAC X FFLP210	RAC X FFLP210 RAC X LTX515	RAC X FFLP210 RAC X LTX517 AAM309	RAC X FFLP210 RAC X LTX517 AAM309
	Fluid Hose	3/16 in x 25 ft (4.8 mm x 7.6 m)	1/4 in x 25 ft (6.4 mm x 7.6 m)	1/4 in x 50 ft (6.4 cm x 15.2 m)	1/4 in x 50 ft (6.4 cm x 15.2 m)
	Fluid Whip Hose	N/A	1/8 in x 6 ft (3.2 mm x 1.8 m)	1/8 in x 6 ft (3.2 mm x 1.8 m)	1/8 in x 6 ft (3.2 mm x 1.8 m)
	Air Hose	N/A	3/8 in x 25 ft (9.5 mm x 7.6 m)	3/8 in x 50 ft (9.5 mm x 15.2 m)	3/8 in x 50 ft (9.5 mm x 15.2 m)
	Air Whip Hose	N/A	1/4 in x 6 ft (6.4 mm x 1.8 m)	1/4 in x 6 ft (6.4 mm x 1.8 m)	1/4 in x 6 ft (6.4 mm x 1.8 m)
	Gun	FTx with RAC X SwitchTip	G40 with RAC X SwitchTip	G40 with RAC X SwitchTip and Flat Tip	G40 with RAC X SwitchTip and Contractor with RAC X SwitchTip
SmartComp	No	No	Yes	Yes	
<b>MANUAL</b>	Operation/Parts	3A3212	333114	334730	334598
<b>PUMP</b>	Replacement Pump	24Y472 ProX (Replacement Kit)	N/A	17C487 (Full Endurance Pump)	17C487 (Full Endurance Pump)



## ABOUT GRACO

### PROVEN QUALITY. LEADING TECHNOLOGY.

Founded in 1926, Graco is a world leader in fluid handling systems and components. Graco products move, measure, control, dispense and apply a wide range of fluids and viscous materials used in vehicle lubrication, commercial and industrial settings.

The company's success is based on its unwavering commitment to technical excellence, world-class manufacturing and unparalleled customer service. Working closely with qualified distributors, Graco offers systems, products and technology that set the quality standard in a wide range of fluid handling solutions. Graco provides equipment for spray finishing, protective coating, paint circulation, lubrication, and dispensing sealants and adhesives, along with power application equipment for the contractor industry. Graco's ongoing investment in fluid management and control will continue to provide innovative solutions to a diverse global market.

## GRACO LOCATIONS

### MAILING ADDRESS

P.O. Box 1441  
Minneapolis, MN 55440-1441  
Tel: 612-623-6000  
Fax: 612-623-6777

### AMERICAS

#### MINNESOTA

Worldwide Headquarters  
Graco Inc.  
88-11th Avenue N.E.  
Minneapolis, MN 55413

### EUROPE

#### BELGIUM

European Headquarters  
Graco N.V.  
Industrieterrein-Oude Bunders  
Slakweidestraat 31  
3630 Maasmechelen,  
Belgium  
Tel: 32 89 770 700  
Fax: 32 89 770 777

### ASIA PACIFIC

#### AUSTRALIA

Graco Australia Pty Ltd.  
Suite 17, 2 Enterprise Drive  
Bundoora, Victoria 3083  
Australia  
Tel: 61 3 9468 8500  
Fax: 61 3 9468 8599

#### CHINA

Graco Fluid Equipment  
(Shanghai) Limited Company  
Building 7  
1029 Zhongshan Road South  
Huangpu District  
Shanghai 200011  
The People's Republic of China  
Tel: 86 21 649 50088  
Fax: 86 21 649 50077

### INDIA

Graco Hong Kong Ltd.  
India Liaison Office  
Room 443, Augusta Point  
Regus Business Centre 53  
Gurgaon, Haryana  
India 122001  
Tel: 91 124 435 4208  
Fax: 91 124 435 4001

### JAPAN

Graco K.K.  
1-27-12 Hayabuchi  
Tsuzuki-ku  
Yokohama City, Japan 2240025  
Tel: 81 45 593 7300  
Fax: 81 45 593 7301

### KOREA

Graco Korea Inc.  
Shinhan Bank Building  
4th Floor #1599  
Gwanyang-Dong, Dongan-Ku,  
Anyang-si, Korea 431-060  
Tel: 82 31 476 9400  
Fax: 82 31 476 9801

## SALES/ DISTRIBUTION/ SERVICE

Call today for product information or to request a demonstration.

**800-690-2894** or visit us at [www.graco.com](http://www.graco.com).

Graco Inc. is registered to I.S. EN ISO 9001

North America  
Customer Service  
800-690-2894  
Fax 800-334-6955

©2017 Graco Inc. 300564 Rev. 0 3/17 All written and visual data contained in this document are based on the latest product information available at the time of publication. Graco reserves the right to make changes at any time without notice. All other brand names or marks are used for identification purposes and are trademarks of their respective owners. Blue is a trademark of Graco Inc. for Contractor Equipment Sprayers. Product covered by issued and pending patents, see <http://www.graco.com/us/en/patents>