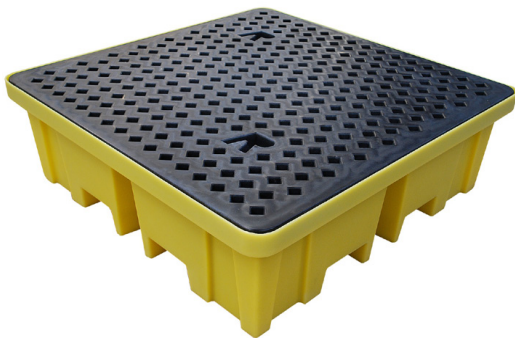


## 4-WAY SPILL CONTAINMENT PALLETS

### TSSBP2FW 4-WAY 2-DRUM SPILL PALLET

- Designed for safe and compliant storage of 2x205L drums
- Made from 100% corrosion free polyethylene
- Four-way forklift access for loaded Spill Pallets
- EPA compliant sumps in all Spill Pallets
- Broadband chemical resistance including acid and bases
- Drain plugs available as an optional extra
- DIBt Z-40.22-398 APPROVAL

Length	Width	Height	Weight	Sump	Max Load
1220mm	820mm	450mm	27kg	230 Litre	1200kg



### TSSBP4FW 4-WAY 4-DRUM SPILL PALLET

- Designed for safe and compliant storage of 4x205L drums
- Seamless construction eliminates leaks
- Meets EPA sump requirements
- Broadband chemical resistance including acid and bases
- Four-way forklift access for loaded Spill Pallets
- Drain plugs available as an optional extra
- DIBt Z-40.22-398 APPROVAL

Length	Width	Height	Weight	Sump	Max Load
1220mm	1220mm	390mm	40kg	250 Litre	1500kg

## SPILL CONTAINMENT PALLETS

### TSSBP1 1-DRUM SPILL PALLET

- Designed for storage of 1 x 250L drum
- EPA compliant sumps in all Spill Pallets
- Small footprint for compliant storage in small areas
- Removable grate makes decontamination easy
- Drain plugs available as an optional extra
- DIBt Z-40.22-398 APPROVAL

Length	Width	Height	Weight	Sump	Max Load
900mm	700mm	525mm	22kg	225 Litre	300kg



### TSSBP2 2-DRUM SPILL PALLET

- Designed for safe and compliant storage of 2 x 205L drums
- Made from 100% corrosion free seamless polyethylene
- Two-way forklift access
- EPA compliant sumps in all Spill Pallets
- Rain covers and ezy-load ramps are also available
- Drain plugs available as an optional extra
- DIBt Z-40.22-398 APPROVAL

Length	Width	Height	Weight	Sump	Max Load
1220mm	820mm	330mm	23kg	240 Litre	650kg

### TSSBP3 3-DRUM SPILL PALLET

- Designed for safe and compliant storage of 3 x 205L drums
- Seamless construction eliminates leaks
- Meets EPA sump requirements
- Broadband chemical resistance including acids & bases
- Drain plugs available as an optional extra
- DIBt Z-40.22-398 APPROVAL

Length	Width	Height	Weight	Sump	Max Load
1785mm	780mm	240mm	30kg	228 Litre	900kg



### TSSBP4L 4-DRUM SPILL PALLET

- Designed for safe and compliant storage of 4 x 205L drums
- Made from 100% corrosion free polyethylene
- Two-way forklift access
- EPA compliant sumps in all Spill Pallets
- Rain covers and ezy-load ramps are also available
- Drain plugs available as an optional extra
- DIBt Z-40.22-398 APPROVAL

Length	Width	Height	Weight	Sump	Max Load
1280mm	1285mm	275mm	29kg	230 Litre	1250kg

### TSSRB1 PALLET RACKING BUND

- Turn standard pallet racking into banded racking
- Prevent contamination of goods stored below
- Utilises the "dead space" between the beams
- Designed to provide easy access to pallets
- 100% polyethylene for broadband chemical resistance
- Drain plugs available as an optional extra

Length	Width	Height	Weight	Sump	Max Load
1310mm	1310mm	245mm	17kg	220 Litre	



### TSSBP2RT 2-DRUM ROLL-TOP SPILL PALLET

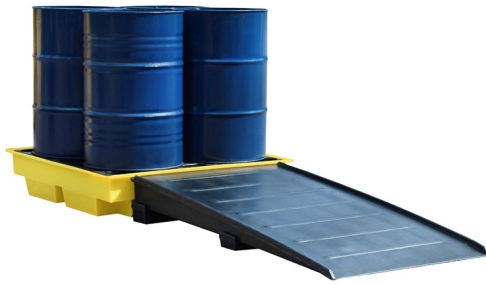
- 100% corrosion free Polyethylene
- Hard covered banded store
- For 2 x 205ltr drums or smaller containers
- Lockable shutter door
- Integral base fork pockets
- Delivered fully assembled
- Drain plugs available as an optional extra

Length	Width	Height	Weight	Sump	Max Load
1490mm	990mm	1690mm	85kg	230 Litre	650kg

## TSSBP4RT 4-DRUM ROLL-TOP SPILL PALLET

- Protect your load from weather and theft
- Key lockable ezy-lift Roll Top Cover 410 litre sump
- Suitable for holding 4 x 205L (44gal) drums
- Removable non-slip grates
- Raised lip helps to keep your load secure
- Delivered fully assembled
- Drain plugs available as an optional extra

Length	Width	Height	Weight	Sump	Max Load
1470mm	1420mm	2070mm	121kg	410 Litre	1250kg



## SPILL PALLET RAMPS

These spill pallet ramps are made from tough polyethylene and are suitable to use with 4-drum and roll-top spill pallets

Item Code	Length	Width	Height	Weight	Max Load
TSSBP4R-(BFR3)	1740mm	1000mm	275mm	33kg	1000kg
TSSBP4RTR-(BFR5)	1740mm	1000mm	370mm	38kg	1000kg
TSSBP4RFW-(BFR4)	1740mm	1000mm	390mm	36kg	1000kg